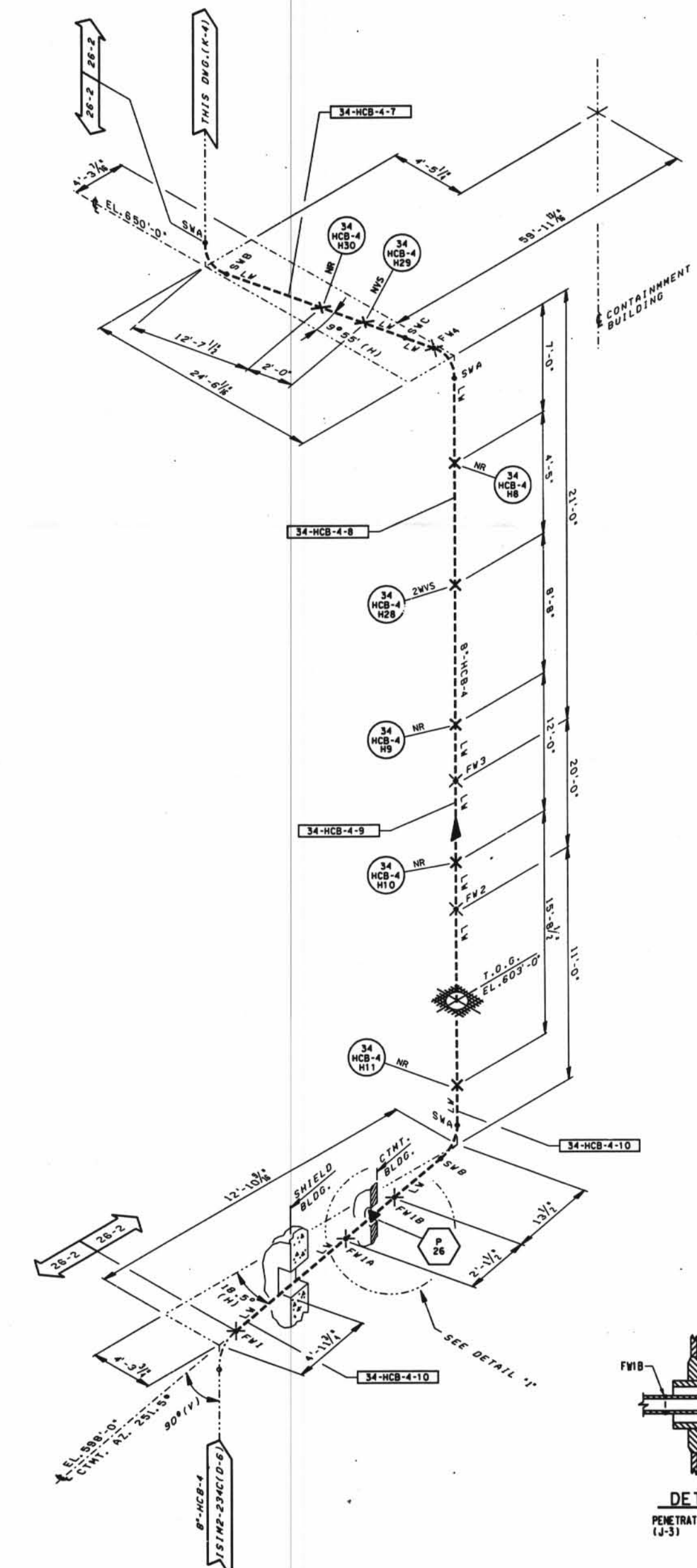
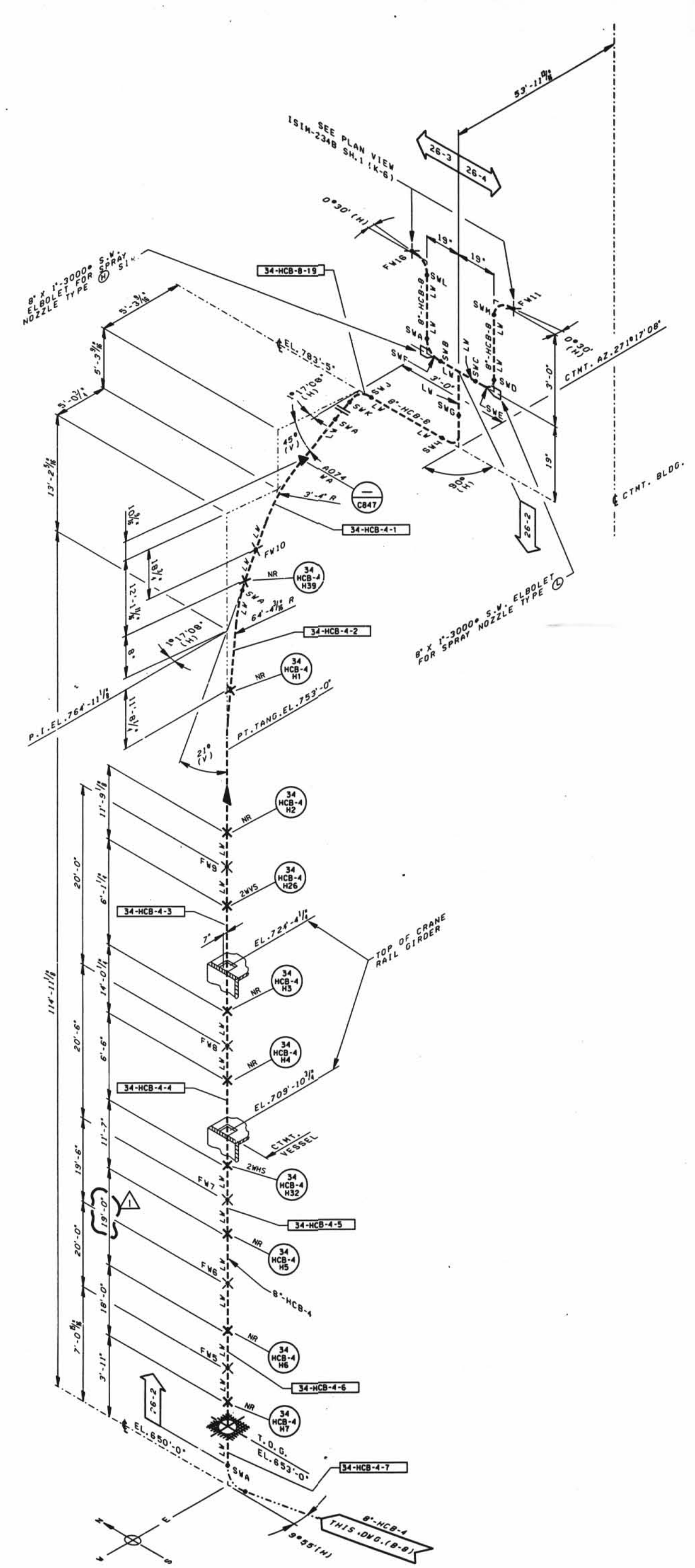


A
B
C
D
E
F
G
H
J
K



LEGEND

- ASME SECTION XI CLASS I PIPING
- ASME SECTION XI CLASS II PIPING
- ASME SECTION XI CLASS III PIPING
- NON-151 NUCLEAR CLASS AND WSC CLASS
- PRESSURE BOUNDARY EXTENSION
- REFERENCE & CONTINUITY
- D-D-H HVAC DUCT
- A ANCHOR
- CS CONSTANT SPRING HANGER
- VS VARIABLE SPRING HANGER
- HS HYDRAULIC SNUBBER
- MS MECHANICAL SNUBBER
- N NON-WELDED SUPPORT ATTACHMENT
- W WELDED INTEGRAL SUPPORT ATTACHMENT
- R RIGID SUPPORT
- T SWAY STRUT
- SW SHOP WELD
- FW FIELD WELD
- LW LONGITUDINAL WELD

NOTES:

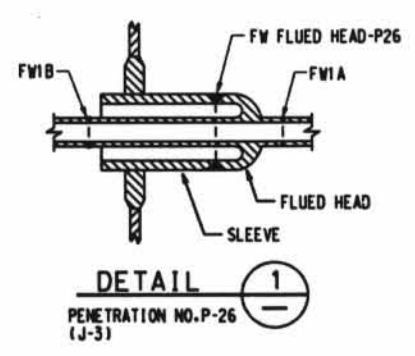
1. MULTIPLE SWAY STRUTS, SPRING SUPPORTS OR SNUBBERS IN A SINGLE PIPING SUPPORT ARE SHOWN BY A NUMBER BEFORE THE SUPPORT TYPE. (EXAMPLE: 2MS - TWO HYDRAULIC TYPE SNUBBERS THAT ARE NOT WELDED INTEGRAL TO THE PIPE.)
2. THE CONTAINMENT SPRAY LINES 8"-HCB-8 AND 8"-HCB-4 WELDS AND SUPPORTS ARE EXEMPT FROM INSERVICE EXAMINATION REQUIREMENTS PER 10 CFR 50.103. THE WELDS AND SUPPORTS SHOWN MAY NOT REPRESENT THE ACTUAL AS-BUILT CONDITION.

GENERAL NOTE

DIMENSIONS SHOWN ON THIS DRAWING ARE TO BE USED FOR APPROXIMATE LOCATION ONLY. USE DESIGN DRAWINGS FOR DIMENSIONAL VERIFICATION.

REFERENCE DRAWINGS:

15102-034 EMERGENCY CORE COOLING SYSTEM
CONTAINMENT SPRAY AND CORE FLOODING SYSTEMS



DATE	REVISIONS	BY	CHK	APP	DATE
10/11/82	1	JFS			10/11/82
DAVIS-BESSE NUCLEAR POWER STATION UNIT NO. 1 INSERVICE INSPECTION ISOMETRIC CONTAINMENT SPRAY SYSTEM CONTAINMENT BUILDING DRAWING NO. 151M2-234B (SHEET 2)					