



LEGEND

- ASME SECTION XI CLASS 1 PIPING
- ASME SECTION XI CLASS 2 PIPING
- ASME SECTION XI CLASS 3 PIPING
- NON-ISI NUCLEAR CLASS AND HSC CLASS
- PRESSURE BOUNDARY EXTENSION
- REFERENCE & CONTINUITY
- D-D-H HYDRAULIC DUCT
- A ANCHOR
- CS CONSTANT SPRING HANGER
- VS VARIABLE SPRING HANGER
- HS HYDRAULIC SHROUD
- MS MECHANICAL SHROUD
- N NON-WELDED SUPPORT ATTACHMENT
- V WELDED INTEGRAL SUPPORT ATTACHMENT
- R RIGID SUPPORT
- T SWAY STRUT
- SW SHOP WELD
- FW FIELD WELD
- LW LONGITUDINAL WELD
- WOL WELDOLET
- ISI ITEM NUMBER DESIGNATION USED IN THE FIRST 10 YEAR INSERVICE INSPECTION INTERVAL.

NOTES:

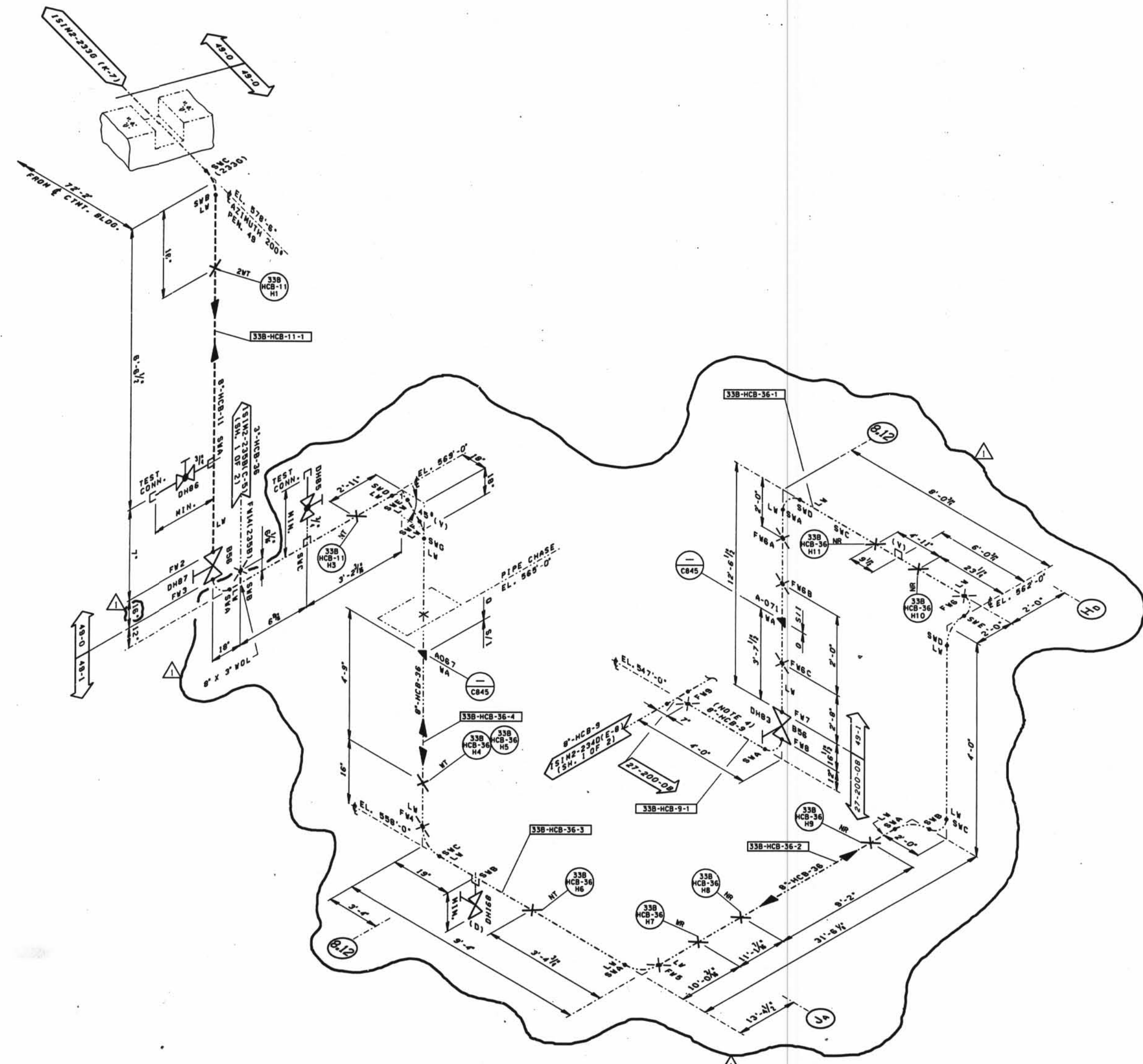
1. MULTIPLE SWAY STRUTS, SPRING SUPPORTS OR SHROUDS IN A SINGLE PIPING SUPPORT ARE SHOWN BY A NUMBER BEFORE THE SUPPORT TYPE. (EXAMPLE: PMS - TWO HYDRAULIC TYPE SHROUDS THAT ARE NOT WELDED INTEGRAL TO THE PIPE).
2. PIPING SYSTEMS ON THIS DRAWING WHICH ARE OUTSIDE OF THE ISI BOUNDARY, ARE SHOWN FOR REFERENCE AND CONTINUITY PURPOSES ONLY. THE CONFIGURATION SHOWN MAY NOT REPRESENT THE ACTUAL AS-BUILT CONDITION.
3. FOR ISI PURPOSES, FLOW IS OUT OF CONTAINMENT.
4. THE LOW PRESSURE INJECTION LINE 8"-HCB-9 WELDS AND SUPPORTS ARE EXEMPT FROM INSERVICE EXAMINATION REQUIREMENTS PER 100.1220. THE WELDS AND SUPPORTS SHOWN MAY NOT REPRESENT THE ACTUAL AS-BUILT CONDITION.

GENERAL NOTE:

DIMENSIONS SHOWN ON THIS DRAWING ARE TO BE USED FOR APPROXIMATE LOCATION ONLY. USE DESIGN DRAWINGS FOR DIMENSIONAL VERIFICATION.

REFERENCE DRAWINGS:

15102-0338 DECAT HEAT TRAIN 1



D-091

INC. DCN'S 15102-233F-4 & 5 FOR DER-91-00111 GEN. UPDATE 4-8" LEADER DIT. FROM JUNE 7, 2008 HCB-36-38 (CONV. 8) PER 10-233F B CORRECT 6'-0" LEADER DIT. PER 10-233F (ZONE 7-4)	
ISSUED FOR SECOND 10 YEAR ISI PROGRAM	CB EFB LLC MOP ECC
REVISIONS	BY DATE
DESIGNED BY: T.S.	CHECKED BY: CB
DAVIS-BESSE NUCLEAR POWER STATION UNIT NO. 1	
INSERVICE INSPECTION ISOMETRIC LOW PRESSURE INJECTION SYSTEM AUXILIARY BUILDING	
DRAWING NO. 15102-233F SMT. 3	SHEET 1