



LEGEND

- ASME SECTION XI CLASS 1 PIPING
- ASME SECTION XI CLASS 2 PIPING
- ASME SECTION XI CLASS 3 PIPING
- NON-151 NUCLEAR CLASS AND HSC CLASS
- PRESSURE BOUNDARY EXTENSION
- REFERENCE B CONTINUITY
- D-D HVAC DUCT
- A ANCHOR
- CS CONSTANT SPRING HANGER
- VS VARIABLE SPRING HANGER
- HS HYDRAULIC SNUBBER
- MS MECHANICAL SNUBBER
- N NON-WELDED SUPPORT ATTACHMENT
- V WELDED INTEGRAL SUPPORT ATTACHMENT
- R RIGID SUPPORT
- T SKAT STRUT
- SW SHOP WELD
- FW FIELD WELD
- LW LONGITUDINAL WELD
- WOL WELDOUT
- 151 ITEM NUMBER DESIGNATION USED IN THE FIRST 10 YEAR INSERVICE INSPECTION INTERVAL

NOTES:

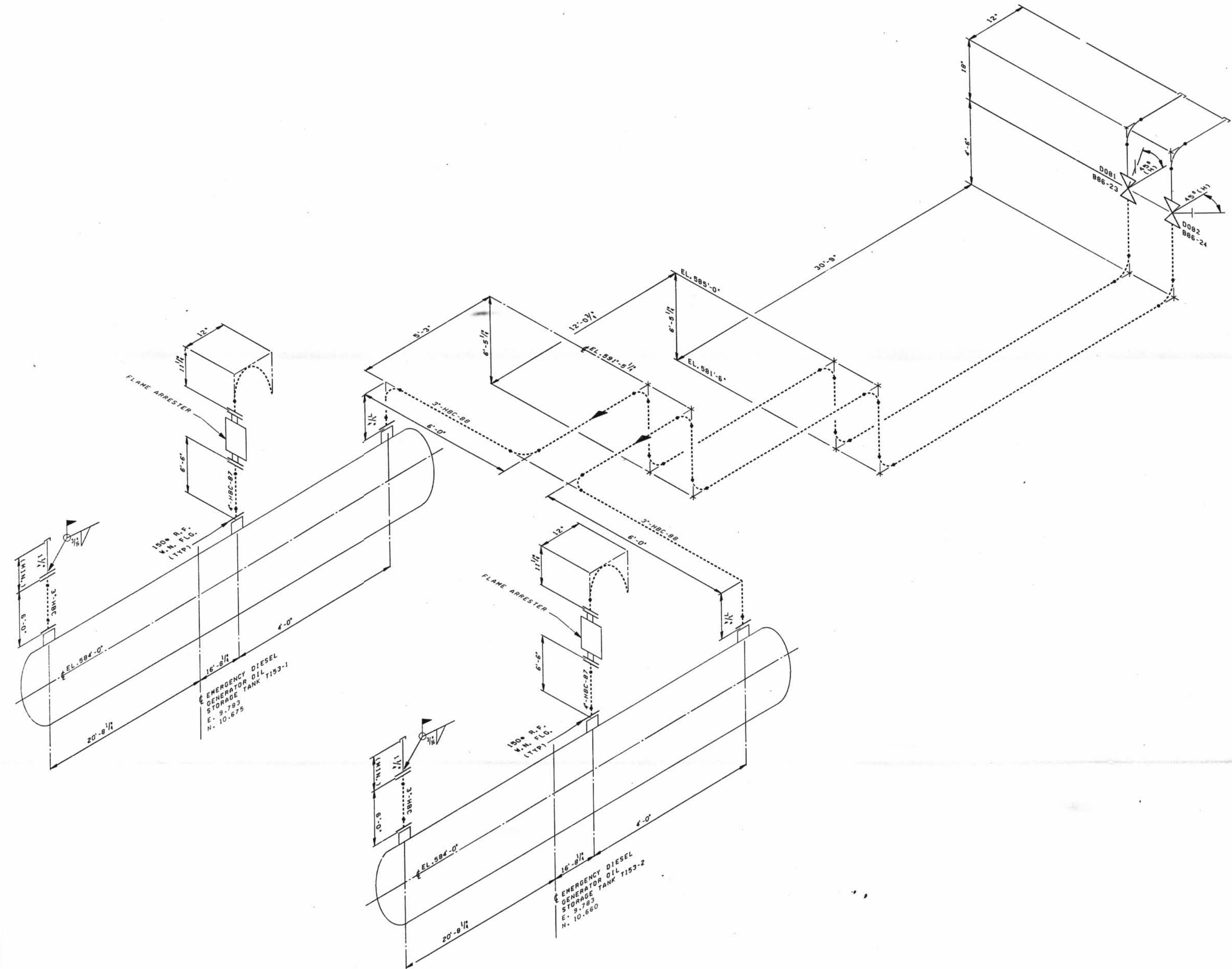
- THE EDC FUEL OIL LINE 4" HBC-87 & 3" HBC-88 WELDS AND SUPPORTS ARE EXEMPT FROM INSERVICE EXAMINATION REQUIREMENTS PER 10.1220. THE WELDS AND SUPPORTS SHOWN MAY NOT REPRESENT THE ACTUAL AS-BUILT CONDITION.
- PIPING SYSTEMS ON THIS DRAWING WHICH ARE OUTSIDE OF THE 151 BOUNDARY, ARE SHOWN FOR REFERENCE AND CONTINUITY PURPOSES ONLY. THE CONFIGURATION SHOWN MAY NOT REPRESENT THE ACTUAL AS-BUILT CONDITION.

GENERAL NOTE:

DIMENSIONS SHOWN ON THIS DRAWING ARE TO BE USED FOR APPROXIMATE LOCATION ONLY. USE DESIGN DRAWINGS FOR DIMENSIONAL VERIFICATION.

REFERENCE DRAWINGS:

15102-017A DIESEL GENERATORS



D-061

NO.	DATE	REVISIONS	BY	CHKD	DATE	APPD
SCALE N.T.S.						
DESIGNED						
DRAWN CB						
CHECKED						
APPROVED						
DAVIS-BESSE NUCLEAR POWER STATION UNIT NO. 1						
THE TRUERO DESIGN COMPANY						
INSERVICE INSPECTION ISOMETRIC EMERGENCY DIESEL GENERATORS FUEL OIL SYSTEM						
DRAWN: NO						
REV: 1						
ISIM2-217A						
1 SHEET 21						

I CERTIFY THAT THE IMAGE CONTAINED ON THIS PLANE WAS MADE IN THE NORMAL AND REGULAR COURSE OF BUSINESS, ON THE DATE STATED HEREIN AND WAS BY ME OR AN ACCURATE REPRODUCTION OF THE RECORD(S) SUBMITTED TO NUCLEAR RECORDS MANAGEMENT.

DATE: 2-5-92 OPERATOR: Brady Wells 30X