



LEGEND

- ASME SECTION XI CLASS 1 PIPING
- ASME SECTION XI CLASS 2 PIPING
- ASME SECTION XI CLASS 3 PIPING
- NON-151 NUCLEAR CLASS AND NSC CLASS
- PRESSURE BOUNDARY EXTENSION
- REFERENCE & CONTINUITY
- HVAC DUCT
- ANCHOR
- CONSTANT SPRING HANGER
- VARIABLE SPRING HANGER
- HYDRAULIC SNUBBER
- MECHANICAL SNUBBER
- NON-WELDED SUPPORT ATTACHMENT
- WELDED INTEGRAL SUPPORT ATTACHMENT
- RIGID SUPPORT
- SWAY STRUT
- SHOP WELD
- FIELD WELD
- LONGITUDINAL WELD
- WELDLET
- 151 ITEM NUMBER DESIGNATION USED IN THE FIRST 10 YEAR INSERVICE INSPECTION INTERVAL

NOTES:

- MULTIPLE SWAY STRUTS, SPRING SUPPORTS OR SNUBBERS IN A SINGLE PIPING SUPPORT ARE SHOWN BY A NUMBER BEFORE THE SUPPORT TYPE. (EXAMPLE: 2MS - TWO HYDRAULIC TYPE SNUBBERS THAT ARE NOT WELDED INTEGRAL TO THE PIPE).
- THIS DRAWING HAS NO SPOOL NUMBERS. THE DRAWING NUMBER IS IN PLACE OF THE SPOOL NUMBER FOR WELD/SUPPORT DESIGNATIONS.
- THE STEAM GENERATOR DRAIN/BLOWDOWN LINE 4" EBB-5 WELDS AND ARE EXEMPT FROM INSERVICE EXAMINATION REQUIREMENTS PER 10.1220. THE WELDS AND SUPPORTS SHOWN MAY NOT REPRESENT THE ACTUAL AS-BUILT CONDITION.

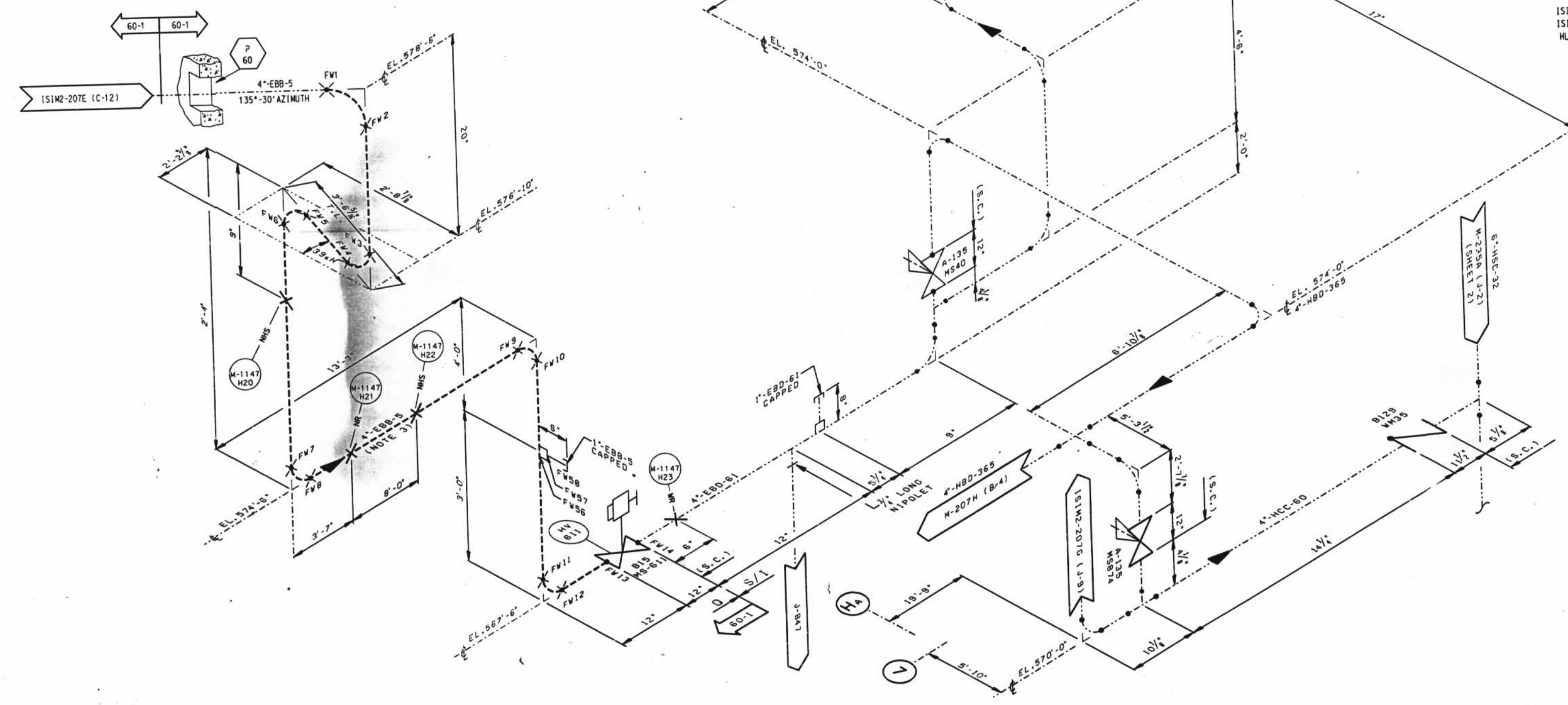
GENERAL NOTES:

DIMENSIONS SHOWN ON THIS DRAWING ARE TO BE USED FOR APPROXIMATE LOCATION ONLY. USE DESIGN DRAWINGS FOR DIMENSIONAL VERIFICATION.

REFERENCE DRAWINGS:

- 15102-007A STEAM GENERATOR SECONDARY SYSTEM
- 15102-007B STEAM GENERATOR SECONDARY SYSTEM
- HL-1147 SH. 2 HANGER LOCATION DRAWING FOR 78-126

D-056



NO.	DATE	REVISED	BY	CHKD	APPD
1	10/10/91				
SCALE: N.T.S.					
DESIGNED: JAD					
CHECKED: JAD					
ISSUED FOR SECOND 10 YEAR ISI					
PROGRAM					
DAVIS-BESSE NUCLEAR POWER STATION					
UNIT NO. 1					
INSERVICE INSPECTION ISOMETRIC					
STEAM GENERATOR NO. 1-1					
DRAIN/BLOWDOWN SYSTEM					
AUXILIARY AND TURBINE BUILDING					
DRAWING NO. 151M2-207F					
1					