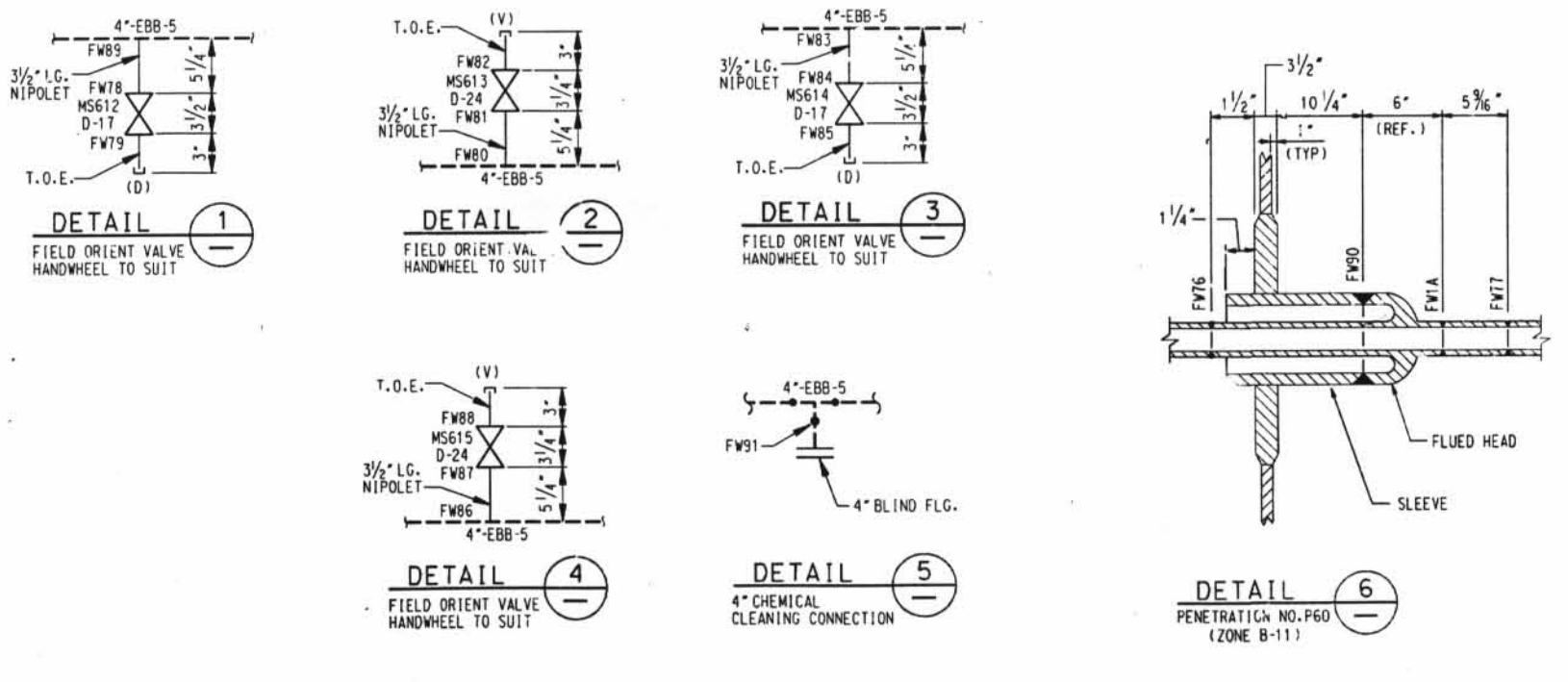


- LEGEND**
- ASME SECTION XI CLASS 1 PIPING
 - ASME SECTION XI CLASS 2 PIPING
 - ASME SECTION XI CLASS 3 PIPING
 - NON-ISI NUCLEAR CLASS AND HSC CLASS
 - PRESSURE BOUNDARY EXTENSION
 - REFERENCE B CONTINUITY
 - D-D HYAC DUCT
 - A ANCHOR
 - CS CONSTANT SPRING HANGER
 - VS VARIABLE SPRING HANGER
 - HS HYDRAULIC SNUBBER
 - MS MECHANICAL SNUBBER
 - N NON-WELDED SUPPORT ATTACHMENT
 - W WELDED INTEGRAL SUPPORT ATTACHMENT
 - R RIGID SUPPORT
 - T SWAY STRUT
 - SW SHOP WELD
 - FW FIELD WELD
 - LW LONGITUDINAL WELD
 - WOL WELD-OLET
 - ISI ITEM NUMBER DESIGNATION USED IN THE FIRST 10 YEAR INSERVICE INSPECTION INTERVAL

- NOTES:**
- MULTIPLE SWAY STRUTS, SPRING SUPPORTS OR SNUBBERS IN A SINGLE PIPING SUPPORT ARE SHOWN BY A NUMBER BEFORE THE SUPPORT TYPE. (EXAMPLE: 2MS - TWO HYDRAULIC TYPE SNUBBERS THAT ARE NOT WELDED INTEGRAL TO THE PIPE).
 - SPOOL NUMBERS FOR THIS Dwg. ARE NOT AVAILABLE.
 - THE OTSG DRAIN/BLOWDOWN LINE 4\"/>

GENERAL NOTE
DIMENSIONS SHOWN ON THIS DRAWING ARE TO BE USED FOR APPROXIMATE LOCATION ONLY. USE DESIGN DRAWINGS FOR DIMENSIONAL VERIFICATION.

REFERENCE DRAWINGS:
IS102-007A STEAM GENERATOR SECONDARY SYSTEM
IS102-007B STEAM GENERATOR SECONDARY SYSTEM
HL-1147 SH-1 HANGER LOCATION DRAWING FOR FOR 78-126



INSERVICE INSPECTION ISOMETRIC
STEAM GENERATOR NO. 1-1
DRAIN/BLOWDOWN SYSTEM
CONTAINMENT BUILDING

ISIM2-207E

I CERTIFY THAT THE PAGE CONTAINED ON THIS FRAME WAS MADE IN THE NORMAL AND REGULAR COURSE OF BUSINESS, ON THE DATE STATED BELOW AND THAT IT IS AN ACCURATE REPRESENTATION OF THE ACTUAL CONDITION. SUBMITTED TO RECORDS DEPARTMENT.

DATE: 1-13-98 OPERATOR: C. J. Deibel 30X