

LEGEND

- ASME SECTION XI CLASS 1 PIPING
- ASME SECTION XI CLASS 2 PIPING
- ASME SECTION XI CLASS 3 PIPING
- NON-151 NUCLEAR CLASS AND HSC CLASS
- PRESSURE BOUNDARY EXTENSION
- REFERENCE & CONTINUITY
- HYAC DUCT
- ANCHOR
- CONSTANT SPRING HANGER
- VARIABLE SPRING HANGER
- HYDRAULIC SNUBBER
- MECHANICAL SNUBBER
- NON-WELDED SUPPORT ATTACHMENT
- WELDED INTEGRAL SUPPORT ATTACHMENT
- RIGID SUPPORT
- SWAY STRUT
- SHOP WELD
- FIELD WELD
- LONGITUDINAL WELD
- WELD JOINT
- 151 ITEM NUMBER DESIGNATION USED IN THE FIRST 10 YEAR INSERVICE INSPECTION INTERVAL

NOTES:

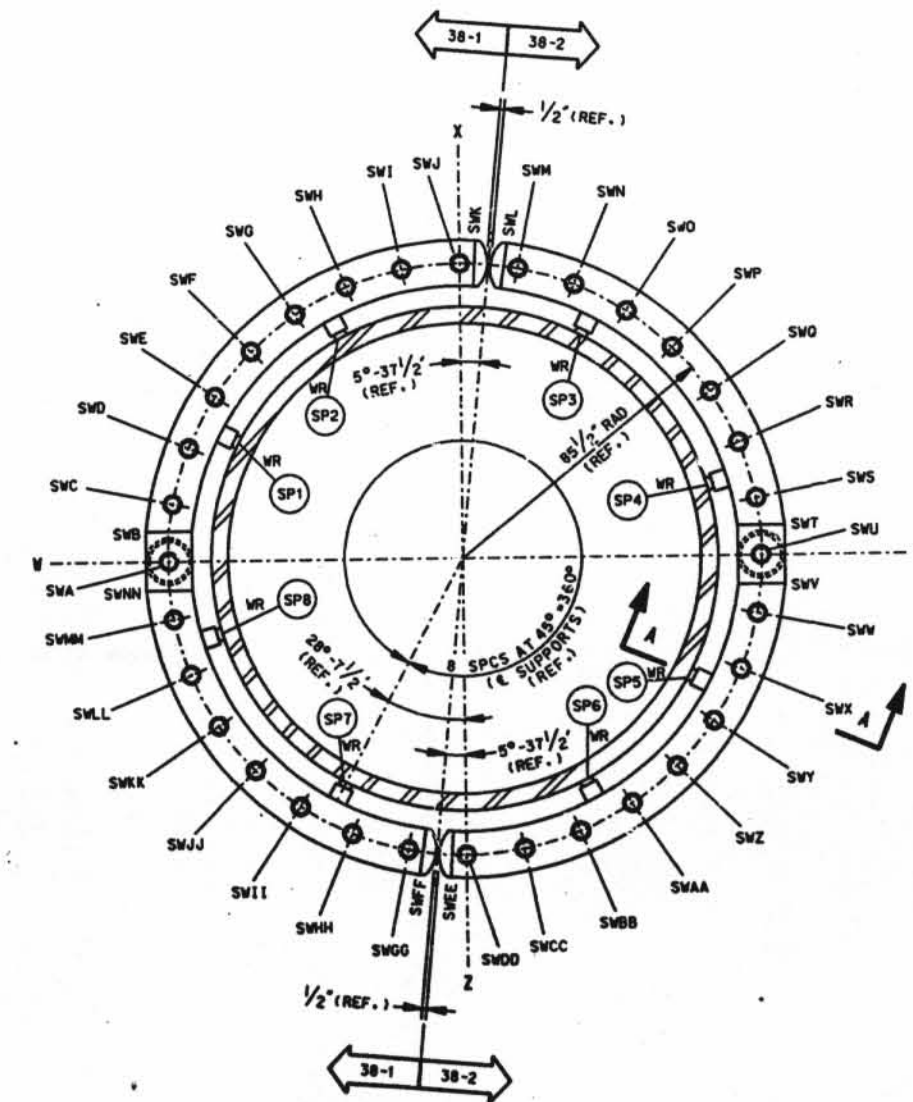
1. MULTIPLE SWAY STRUTS, SPRING SUPPORTS OR SNUBBERS IN A SINGLE PIPING SUPPORT ARE SHOWN BY A NUMBER BEFORE THE SUPPORT TYPE. (EXAMPLE: 2MS - TWO HYDRAULIC TYPE SNUBBERS THAT ARE NOT WELDED INTEGRAL TO THE PIPE).
2. THE RING HEADER, WELDS AND SUPPORTS SHOWN IN DETAIL 1 SHALL BE INSPECTED PER ASME SECTION XI, INCLASS 21.
3. THE FEEDWATER HEADER RISER TUBES ARE EXEMPT FROM INSERVICE EXAMINATION REQUIREMENTS PER 10C 1200.
4. PIPE WELD RESTRAINTS ARE SHOWN FOR INFORMATION ONLY AND ARE NOT SUBJECT TO INSPECTION UNDER ASME SECTION XI. MW 5 AND MW 6 HAVE BEEN ABANDONED IN PLACE.
5. PIPING SYSTEMS ON THIS DRAWING WHICH ARE OUTSIDE OF THE 151 BOUNDARY, ARE SHOWN FOR REFERENCE & CONTINUITY PURPOSES ONLY. THE CONFIGURATION SHOWN MAY NOT REPRESENT THE ACTUAL AS-BUILT CONDITION.

GENERAL NOTE

DIMENSIONS SHOWN ON THIS DRAWING ARE TO BE USED FOR APPROXIMATE LOCATION ONLY. USE DESIGN DRAWINGS FOR DIMENSIONAL VERIFICATION.

REFERENCE DRAWINGS:

- 15102-007A STEAM GENERATOR SECONDARY SYSTEM
- 15102-007B STEAM GENERATOR SECONDARY SYSTEM
- 7749-C-612 CONTAINMENT BUILDING MAIN FEEDWATER SEISMIC RESTRAINTS DETAILS, SHEET #1
- 7749-C-613 CONTAINMENT BUILDING MAIN FEEDWATER SEISMIC RESTRAINTS DETAILS, SHEET #2
- 7749-C-615 AUXILIARY BUILDING MAIN FEEDWATER SEISMIC RESTRAINTS, SHEET #1
- BARCOCK & WILCOX DRAWING 151922, ERECTION ASSEMBLY-FEEDWATER HEADER AND NOZZLES (STEAM GENERATOR).
- BARCOCK & WILCOX DRAWING 151922, FEEDWATER INLET AND HEADER.



DETAIL 2  
MAIN FEEDWATER RING HEADER  
STEAM GENERATOR NO. 1-1  
N.T.S.

DATE	REVISED	BY	CHKD	APP'D
10/1/88				
DAVIS-BESSE NUCLEAR POWER STATION UNIT NO. 1				
INSERVICE INSPECTION ISOMETRIC MAIN FEEDWATER SYSTEM AUXILIARY AND CONTAINMENT BUILDINGS				
ISIM2-207C (SHEET 1)				

D-053