

# LEGEND

- ASME SECTION XI CLASS 1 PIPING
- ASME SECTION XI CLASS 2 PIPING
- ASME SECTION XI CLASS 3 PIPING
- NON-ISI NUCLEAR CLASS AND HSC CLASS
- PRESSURE BOUNDARY EXTENSION
- REFERENCE 8 CONTINUITY
- HVAC DUCT
- ANCHOR
- CONSTANT SPRING HANGER
- VARIABLE SPRING HANGER
- HYDRAULIC SNUBBER
- MECHANICAL SNUBBER
- NON-WELDED SUPPORT ATTACHMENT
- WELDED INTEGRAL SUPPORT ATTACHMENT
- RIGID SUPPORT
- SWAY STRUT
- SHOP WELD
- FIELD WELD
- LONGITUDINAL WELD
- WELDLET
- ISI ITEM NUMBER DESIGNATION USED IN THE FIRST 10 YEAR INSERVICE INSPECTION INTERVAL

# NOTES:

- MULTIPLE SWAY STRUTS, SPRING SUPPORTS OR SNUBBERS IN A SINGLE PIPING SUPPORT ARE SHOWN BY A NUMBER BEFORE THE SUPPORT TYPE. (EXAMPLE: 2MS - TWO HYDRAULIC TYPE SNUBBERS THAT ARE NOT WELDED INTEGRAL TO THE PIPE).
- THE STEAM GENERATOR DRAIN LINE 4" EBB-S WELDS AND SUPPORTS ARE EXEMPT FROM INSERVICE EXAMINATION REQUIREMENTS PER IWC 1220. THE WELDS AND SUPPORTS SHOWN MAY NOT REPRESENT THE ACTUAL AS-BUILT CONDITION.

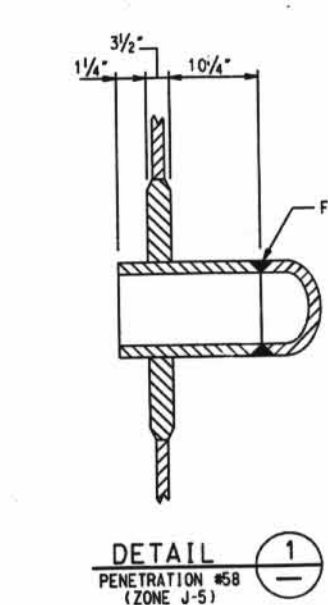
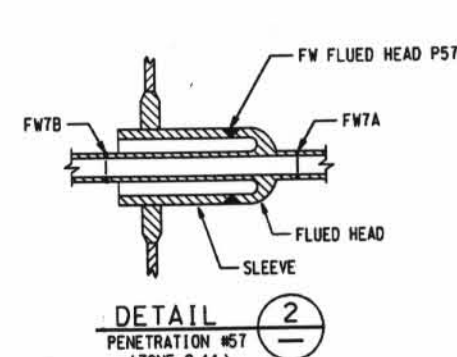
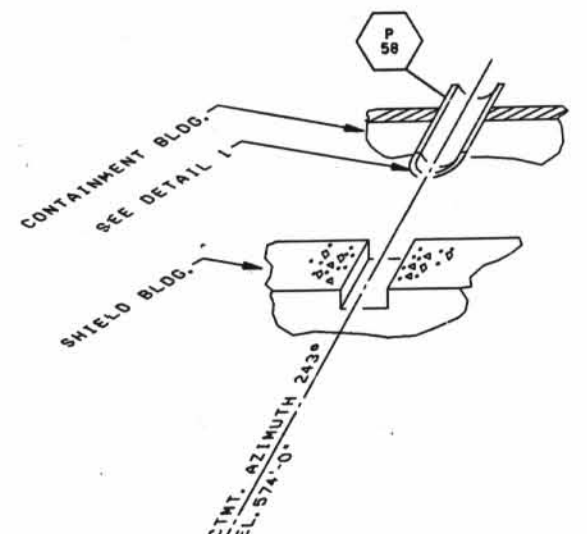
# GENERAL NOTE

DIMENSIONS SHOWN ON THIS DRAWING ARE TO BE USED FOR APPROXIMATE LOCATION ONLY. USE DESIGN DRAWINGS FOR DIMENSIONAL VERIFICATION.

# REFERENCE DRAWINGS:

- IS102-007A STEAM GENERATOR SECONDARY SYSTEM
- IS102-007B STEAM GENERATOR SECONDARY SYSTEM

D-052



|          |        |           |    |      |       |     |
|----------|--------|-----------|----|------|-------|-----|
| DATE     | ISSUED | REVISIONS | BY | CHKD | APP'D | LOC |
| 10/10/91 | 1      | 1         | 1  | 1    | 1     | 1   |
| 10/10/91 | 2      | 1         | 1  | 1    | 1     | 1   |
| 10/10/91 | 3      | 1         | 1  | 1    | 1     | 1   |
| 10/10/91 | 4      | 1         | 1  | 1    | 1     | 1   |
| 10/10/91 | 5      | 1         | 1  | 1    | 1     | 1   |
| 10/10/91 | 6      | 1         | 1  | 1    | 1     | 1   |
| 10/10/91 | 7      | 1         | 1  | 1    | 1     | 1   |
| 10/10/91 | 8      | 1         | 1  | 1    | 1     | 1   |
| 10/10/91 | 9      | 1         | 1  | 1    | 1     | 1   |
| 10/10/91 | 10     | 1         | 1  | 1    | 1     | 1   |
| 10/10/91 | 11     | 1         | 1  | 1    | 1     | 1   |
| 10/10/91 | 12     | 1         | 1  | 1    | 1     | 1   |
| 10/10/91 | 13     | 1         | 1  | 1    | 1     | 1   |
| 10/10/91 | 14     | 1         | 1  | 1    | 1     | 1   |
| 10/10/91 | 15     | 1         | 1  | 1    | 1     | 1   |
| 10/10/91 | 16     | 1         | 1  | 1    | 1     | 1   |
| 10/10/91 | 17     | 1         | 1  | 1    | 1     | 1   |
| 10/10/91 | 18     | 1         | 1  | 1    | 1     | 1   |
| 10/10/91 | 19     | 1         | 1  | 1    | 1     | 1   |
| 10/10/91 | 20     | 1         | 1  | 1    | 1     | 1   |

DAVIS-BESSE NUCLEAR POWER STATION  
UNIT NO. 1  
INSERVICE INSPECTION ISOMETRIC  
STEAM GENERATOR DRAIN SYSTEM  
CONTAINMENT BUILDING  
DRAWING NO. ISIM2-207A  
REV. 1