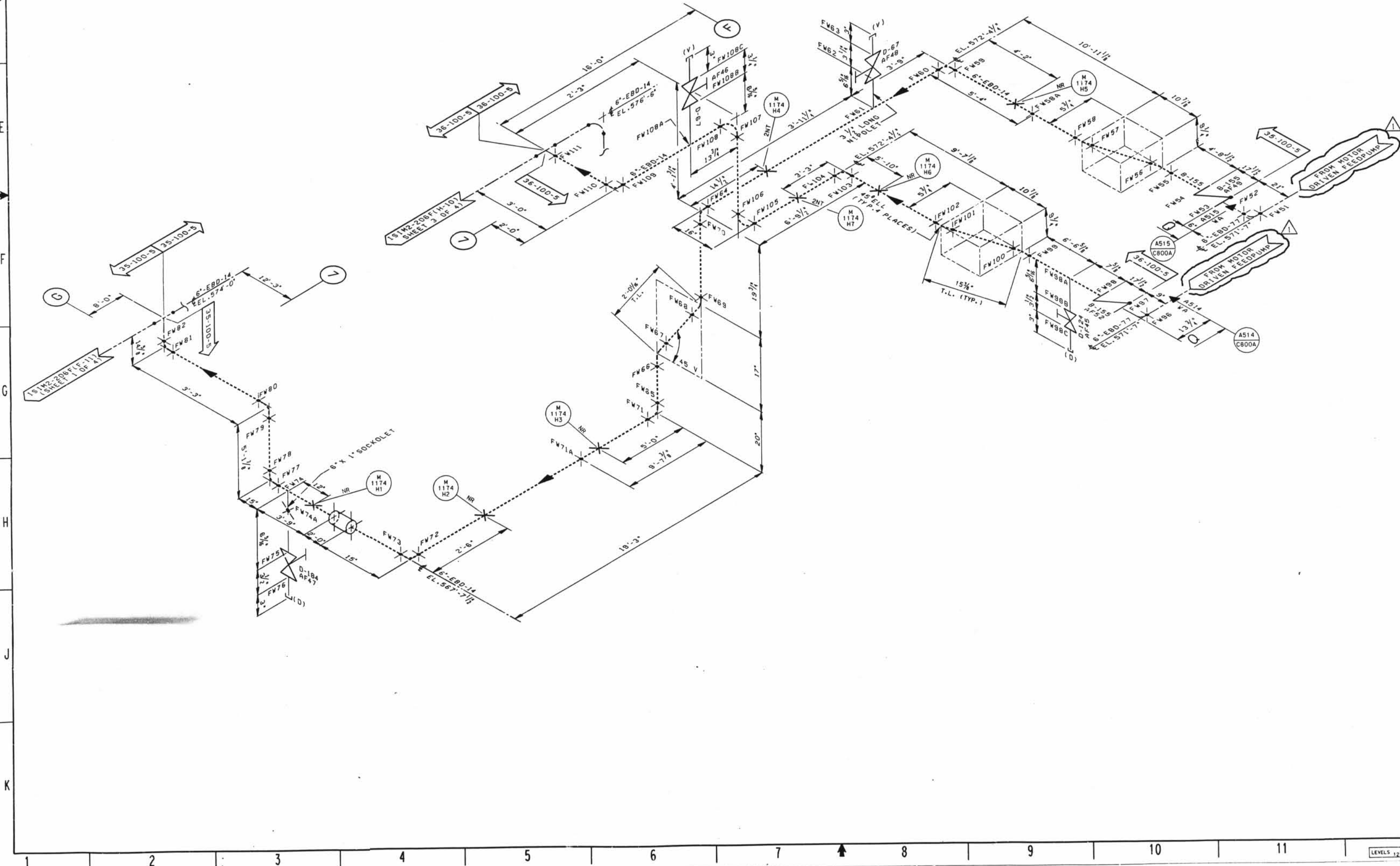


A
B
C
D
E
F
G
H
J
K



LEGEND

- ASME SECTION XI CLASS 1 PIPING
- ASME SECTION XI CLASS 2 PIPING
- ASME SECTION XI CLASS 3 PIPING
- NON-121 NUCLEAR CLASS AND WSC CLASS
- PRESSURE BOUNDARY EXTENSION
- REFERENCE & CONTINUITY
- HVAC DUCT
- ANCHOR
- CONSTANT SPRING HANGER
- VARIABLE SPRING HANGER
- HYDRAULIC SNUBBER
- MECHANICAL SNUBBER
- NON-WELDED SUPPORT ATTACHMENT
- WELDED INTEGRAL SUPPORT ATTACHMENT
- RIGID SUPPORT
- SWAY STRUT
- SHOP WELD
- FIELD WELD
- LONGITUDINAL WELD
- WELD JOINT
- ISI ITEM NUMBER DESIGNATION USED IN THE FIRST 10 YEAR INSERVICE INSPECTION INTERVAL

NOTES:

- MULTIPLE SWAY STRUTS, SPRING SUPPORTS OR SNUBBERS IN A SINGLE PIPING SUPPORT ARE SHOWN BY A NUMBER BEFORE THE SUPPORT TYPE. (EXAMPLE: 2MS - TWO HYDRAULIC TYPE SNUBBERS THAT ARE NOT WELDED INTEGRAL TO THE PIPE).
- THERE ARE NO SPOOL NUMBERS FOR PIPING ON THIS DRAWING.
- THE SUPPORTS ON THE MOTOR DRIVEN FEED PUMP LINE 6\"/>

GENERAL NOTES:

DIMENSIONS SHOWN ON THIS DRAWING ARE TO BE USED FOR APPROXIMATE LOCATION ONLY. USE DESIGN DRAWINGS FOR DIMENSIONAL VERIFICATION.

REFERENCE DRAWINGS:

- IS102-0060 AUXILIARY FEEDWATER SYSTEM
- IS102-0078 STEAM GENERATOR SECONDARY SYSTEM
- HL-1174 HANGER LOCATION DRAWING SHEET 2 OF 2 FOR FCN 85-025

D-051

1	2	3	4	5	6	7	8	9	10	11	12	13	14	15	16	17	18	19	20	21	22	23	24	25	26	27	28	29	30	31	32	33	34	35	36	37	38	39	40	41	42	43	44	45	46	47	48	49	50	51	52	53	54	55	56	57	58	59	60	61	62	63	64	65	66	67	68	69	70	71	72	73	74	75	76	77	78	79	80	81	82	83	84	85	86	87	88	89	90	91	92	93	94	95	96	97	98	99	100
INC BOM IS1M2-2060-1 FOR JOR										ISSUED FOR SECOND 10 YEAR ISI PROGRAM										REVISIONS										DATE																																																																					
DAVIS-BESSE NUCLEAR POWER STATION UNIT NO. 1										INSERVICE INSPECTION ISOMETRIC CONDENSATE SYSTEM										MOTOR DRIVEN FEED PUMP P-241 DISCHARGE										DRAWING NO.																																																																					
IS1M2-2060										1										14										1																																																																					

E

D

C

B

A

I

A

B

C

D

E