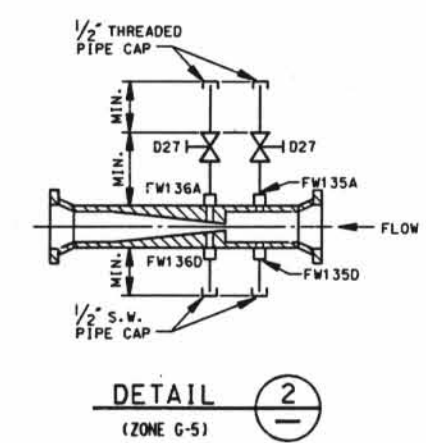


- LEGEND**
- ASME SECTION XI CLASS 1 PIPING
 - ASME SECTION XI CLASS 2 PIPING
 - ASME SECTION XI CLASS 3 PIPING
 - NON-1ST NUCLEAR CLASS AND HSC CLASS
 - PRESSURE BOUNDARY EXTENSION
 - REFERENCE & CONTINUITY
 - D-D-HVAC DUCT
 - A-ANCHOR
 - CS-CONSTANT SPRING HANGER
 - VS-VARIABLE SPRING HANGER
 - HS-HYDRAULIC SNUBBER
 - MS-MECHANICAL SNUBBER
 - N-NON-WELDED SUPPORT ATTACHMENT
 - W-WELDED INTEGRAL SUPPORT ATTACHMENT
 - R-RIGID SUPPORT
 - T-SWAY STRUT
 - SW-SHOP WELD
 - FW-FIELD WELD
 - LW-LONGITUDINAL WELD
 - WOL-WELDOLLET
 - (S) ITEM NUMBER DESIGNATION USED IN THE FIRST 10 YEAR INSERVICE INSPECTION INTERVAL.

- NOTES:**
- MULTIPLE SWAY STRUTS, SPRING SUPPORTS OR SNUBBERS IN A SINGLE PIPING SUPPORT ARE SHOWN BY A NUMBER BEFORE THE SUPPORT TYPE. (EXAMPLE: 2VS - TWO HYDRAULIC TYPE SNUBBERS THAT ARE NOT WELDED INTEGRAL TO THE PIPE).
 - THE SUPPORTS ON THE AUXILIARY FEED PUMP DISCHARGE LINE 6" EBD-14 ARE WITHIN THE 1ST EXAMINATION BOUNDARY. THE PIPING WELDS IN THIS LINE ARE SHOWN FOR REFERENCE PURPOSES ONLY. THESE WELDS MAY NOT BE REPRESENTED IN THE ACTUAL AS-BUILT CONDITION.

GENERAL NOTE
DIMENSIONS SHOWN ON THIS DRAWING ARE TO BE USED FOR APPROXIMATE LOCATION ONLY. USE DESIGN DRAWINGS FOR DIMENSIONAL VERIFICATION.

REFERENCE DRAWINGS:
ISID2-007B STEAM GENERATOR SECONDARY SYSTEM



DAVIS-BESSE NUCLEAR POWER STATION UNIT NO. 1	
INSERVICE INSPECTION ISOMETRIC AUXILIARY FEEDWATER SYSTEM AUX. FEED PUMP DISCH. TO STEAM GENERATORS	
ISIM2-206F (SHEET 2)	
DATE	REVISIONS
SCALE N.T.S.	DESIGNED
DATE	DRWN
DATE	CHKD
DATE	APPD
DATE	INSP
DATE	ECC