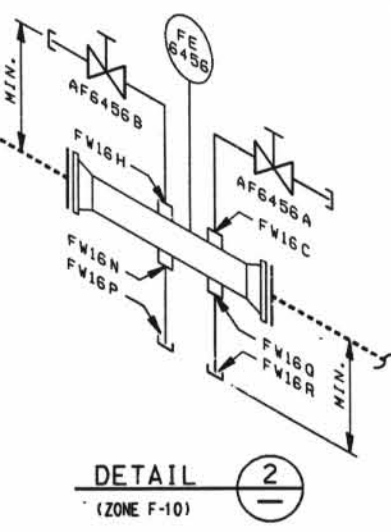


- LEGEND**
- ASME SECTION XI CLASS 1 PIPING
  - ASME SECTION XI CLASS 2 PIPING
  - ASME SECTION XI CLASS 3 PIPING
  - NON-151 NUCLEAR CLASS AND HSC CLASS
  - PRESSURE BOUNDARY EXTENSION
  - REFERENCE & CONTINUITY
  - D-D - HVAC DUCT
  - A - ANCHOR
  - CS - CONSTANT SPRING HANGER
  - VS - VARIABLE SPRING HANGER
  - HS - HYDRAULIC SNUBBER
  - MS - MECHANICAL SNUBBER
  - N - NON-WELDED SUPPORT ATTACHMENT
  - W - WELDED INTEGRAL SUPPORT ATTACHMENT
  - R - RIGID SUPPORT
  - T - SWAY STRUT
  - SW - SHOP WELD
  - FW - FIELD WELD
  - LW - LONGITUDINAL WELD
  - WOL - WELDLET
  - ISI - ITEM NUMBER DESIGNATION USED IN THE FIRST 10 YEAR INSERVICE INSPECTION INTERVAL

- NOTES:**
- MULTIPLE SWAY STRUTS, SPRING SUPPORTS OR SNUBBERS IN A SINGLE PIPING SUPPORT ARE SHOWN BY A NUMBER BEFORE THE SUPPORT TYPE. (EXAMPLE: 2MS - TWO HYDRAULIC TYPE SNUBBERS THAT ARE NOT WELDED INTEGRAL TO THE PIPE).
  - THE SUPPORTS ON THE AUXILIARY FEEDWATER LINE 6" EBD-14 ARE WITHIN THE 151 EXAMINATION BOUNDARY. THE PIPING WELDS IN THIS LINE ARE SHOWN FOR REFERENCE PURPOSES ONLY. THESE WELDS MAY NOT BE REPRESENTED IN THE ACTUAL AS-BUILT CONDITION.

**GENERAL NOTE**  
DIMENSIONS SHOWN ON THIS DRAWING ARE TO BE USED FOR APPROXIMATE LOCATION ONLY. USE DESIGN DRAWINGS FOR DIMENSIONAL VERIFICATION.

**REFERENCE DRAWINGS:**  
15102-007B STEAM GENERATOR SECONDARY SYSTEM



INC. DCH 15102-206F-1 FOR DCR 91-0011		JFS	10/1/91
ISSUED FOR SECOND 10 YEAR ISI PROGRAM		JFK	10/1/91
NO.	DATE	REVISIONS	BY
1	10/1/91	1	JFK
SCALE N.T.S. DESIGNED DRAWN CB			
DAVIS-BESSE NUCLEAR POWER STATION UNIT NO. 1			
THE TOLSON DESIGN COMPANY			
INSERVICE INSPECTION ISOMETRIC AUXILIARY FEEDWATER SYSTEM			
AUX. FEED PUMP DISCH. TO STEAM GENERATORS			
DRAWING NO. 15102-206F			
SHEET 11			

D-044