

LEGEND

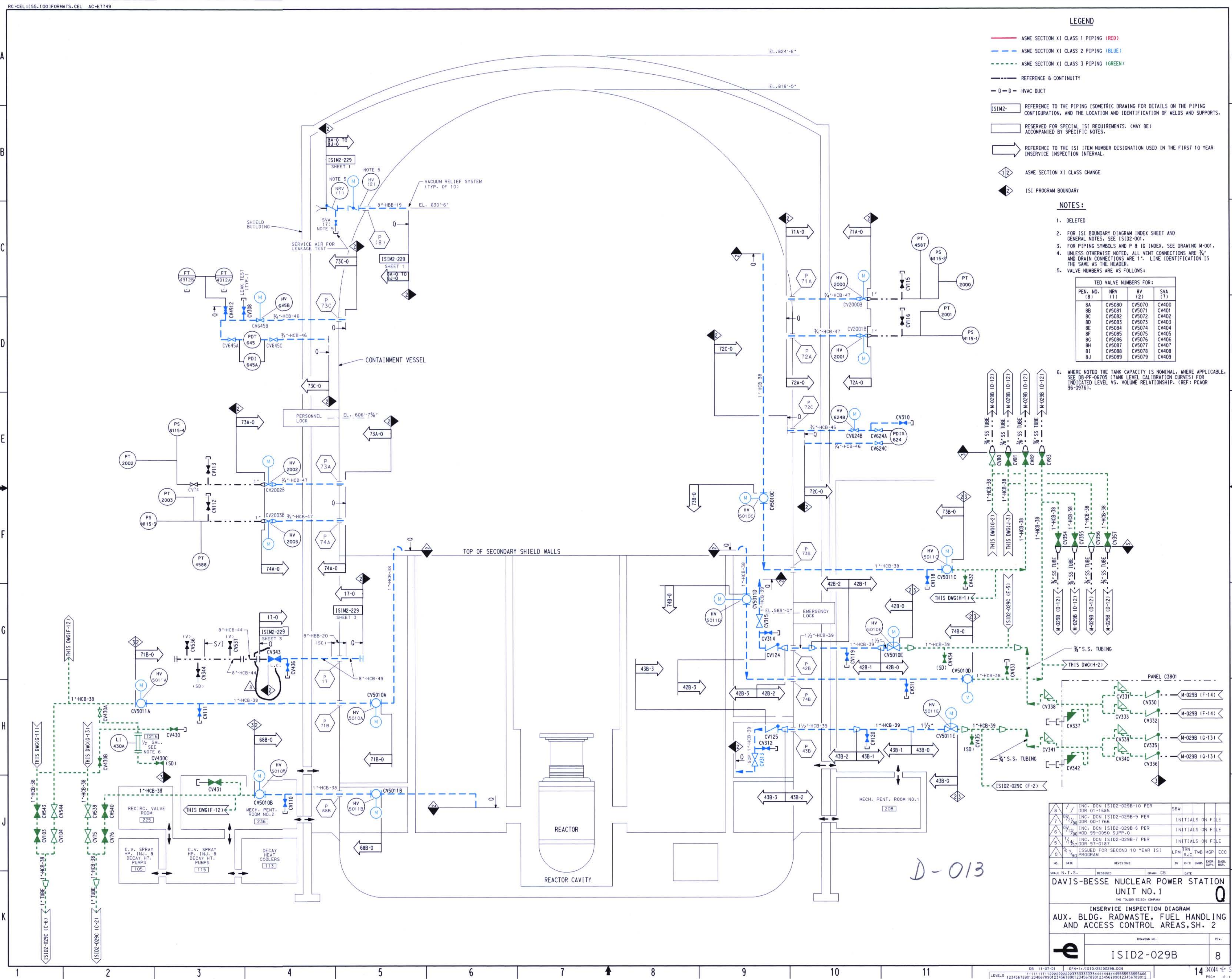
- ASME SECTION XI CLASS 1 PIPING (RED)
- ASME SECTION XI CLASS 2 PIPING (BLUE)
- ASME SECTION XI CLASS 3 PIPING (GREEN)
- REFERENCE & CONTINUITY
- HVAC DUCT
- REFERENCE TO THE PIPING ISOMETRIC DRAWING FOR DETAILS ON THE PIPING CONFIGURATION, AND THE LOCATION AND IDENTIFICATION OF WELDS AND SUPPORTS.
- RESERVED FOR SPECIAL ISI REQUIREMENTS. (MAY BE ACCOMPANIED BY SPECIFIC NOTES).
- REFERENCE TO THE ISI ITEM NUMBER DESIGNATION USED IN THE FIRST 10 YEAR INSERVICE INSPECTION INTERVAL.
- ASME SECTION XI CLASS CHANGE
- ISI PROGRAM BOUNDARY

NOTES:

- DELETED
- FOR ISI BOUNDARY DIAGRAM INDEX SHEET AND GENERAL NOTES, SEE ISID2-001.
- FOR PIPING SYMBOLS AND P & ID INDEX, SEE DRAWING M-001.
- UNLESS OTHERWISE NOTED, ALL VENT CONNECTIONS ARE 1/2" AND DRAIN CONNECTIONS ARE 1/2" LINE IDENTIFICATION IS THE SAME AS THE HEADER.
- VALVE NUMBERS ARE AS FOLLOWS:

PEN. NO. (8)	NRV (1)	HV (2)	SVA (7)
8A	CV5080	CV5070	CV400
8B	CV5081	CV5071	CV401
8C	CV5082	CV5072	CV402
8D	CV5083	CV5073	CV403
8E	CV5084	CV5074	CV404
8F	CV5085	CV5075	CV405
8G	CV5086	CV5076	CV406
8H	CV5087	CV5077	CV407
8I	CV5088	CV5078	CV408
8J	CV5089	CV5079	CV409

- WHERE NOTED THE TANK CAPACITY IS NOMINAL, WHERE APPLICABLE, SEE DB-PT-067015 (TANK LEVEL CALIBRATION CURVES) FOR INDICATED LEVEL VS. VOLUME RELATIONSHIP. (REF: PCAOR 96-09761).



8	INC. DCN ISID2-029B-10 PER DOR 01-1685	SBW	
7	INC. DCN ISID2-029B-9 PER DOR 00-1766	INITIALS ON FILE	
6	INC. DCN ISID2-029B-8 PER MOD 99-0050 SUPP. 0	INITIALS ON FILE	
5	INC. DCN ISID2-029B-7 PER DOR 97-0187	INITIALS ON FILE	
4	ISSUED FOR SECOND 10 YEAR ISI PROGRAM	TRN BUC TMB MGP ECC	
NO.	DATE	REVISIONS	BY DATE
1	11-07-01	DESIGNED	CB
2	11-07-01	DRAWN	CB
3	11-07-01	CHECKED	CB
4	11-07-01	APPROVED	CB
5	11-07-01	REVIEWED	CB
6	11-07-01	REVIEWED	CB
7	11-07-01	REVIEWED	CB
8	11-07-01	REVIEWED	CB
9	11-07-01	REVIEWED	CB
10	11-07-01	REVIEWED	CB
11	11-07-01	REVIEWED	CB
12	11-07-01	REVIEWED	CB
13	11-07-01	REVIEWED	CB
14	11-07-01	REVIEWED	CB
15	11-07-01	REVIEWED	CB
16	11-07-01	REVIEWED	CB
17	11-07-01	REVIEWED	CB
18	11-07-01	REVIEWED	CB
19	11-07-01	REVIEWED	CB
20	11-07-01	REVIEWED	CB