



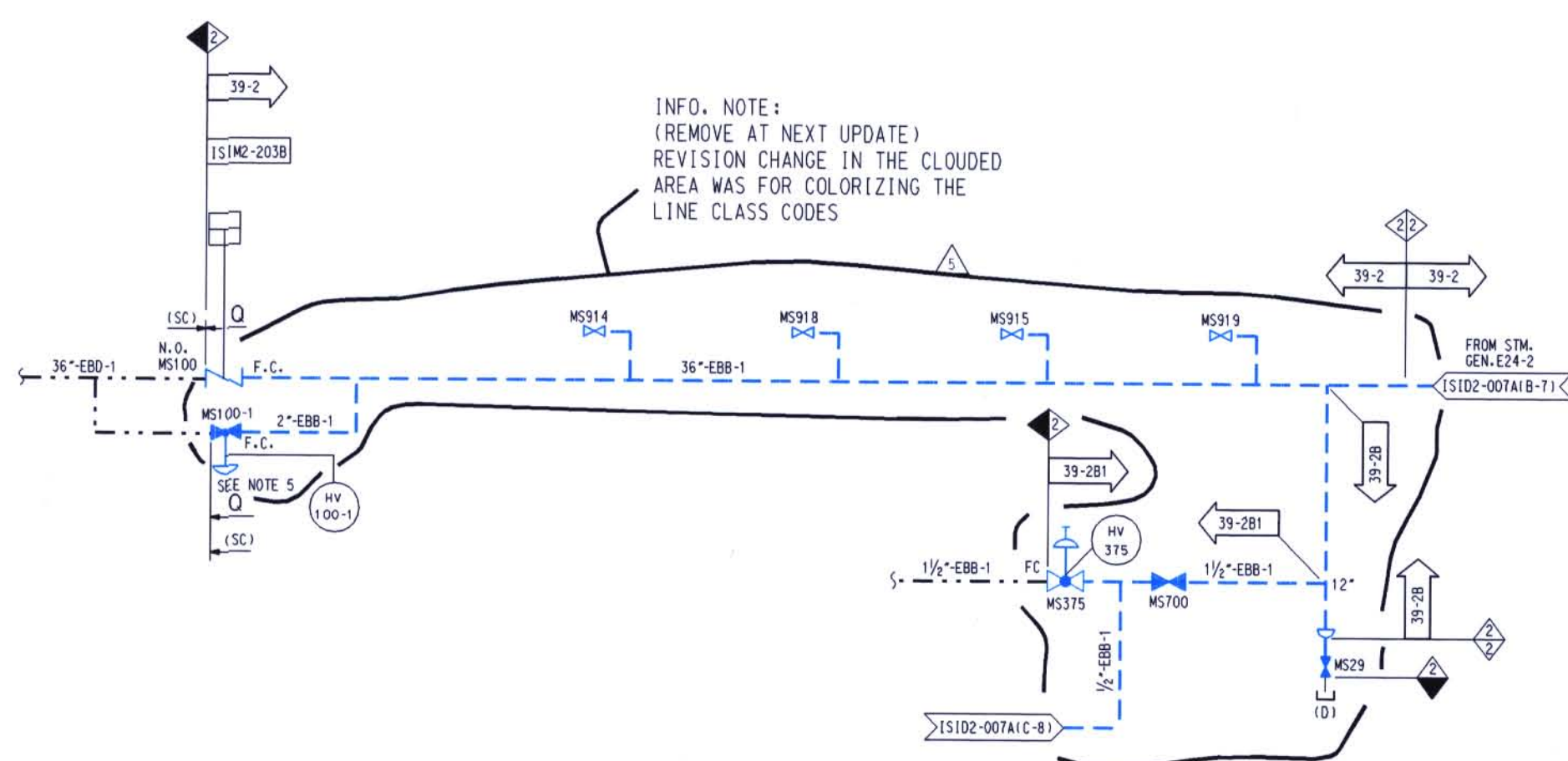
	REFERENCE TO THE PIPING ISOMETRIC DRAWING FOR DETAILS ON THE PIPING CONFIGURATION, AND THE LOCATION AND IDENTIFICATION OF WELDS AND SUPPORTS
	RESERVED FOR SPECIAL ISI REQUIREMENTS. (MAY BE) ACCOMPANIED BY SPECIFIC NOTES.
	REFERENCE TO THE ISI ITEM NUMBER DESIGNATION USED IN THE FIRST 10 YEAR INSERVICE INSPECTION INTERVAL.
	ASME SECTION XI CLASS CHANGE
	ISI PROGRAM BOUNDARY



NOTES:

1. DELETED
2. FOR ISI BOUNDARY DIAGRAM INDEX SHEET AND GENERAL NOTES, SEE 15102-001.
3. FOR PIPING SYMBOLS AND P 8 IO INDEX, SEE DRAWING M-001.
4. UNLESS OTHERWISE NOTED, ALL VENT CONNECTIONS ARE ¾" AND ALL LIN CONNECTIONS ARE 1". LINE IDENTIFICATION IS THE SAME AS THE HEADER.
5. VALVE M5101-1 WAS FORMERLY NUMBERED AS M5101A. VALVE M5101-2 WAS FORMERLY NUMBERED AS M5101A.

D-002

1	INC. DCN IS102-003A-6 PER DDR 00-1766	SWB			
2	INC. DCN'S IS102-003A-4 AND 5 PER MOD 92-000011A, 00		INITIALS	ON	FILE
3	INC. DCN IS102-003A-3 FOR DCR 94-0030		INITIALS	ON	FILE
4	INC. DCN IS102-003A-2 FOR DCR 93-0068		INITIALS	ON	FILE
5	INC. DCN IS102-003A-1 FOR DCR 91-0011		INITIALS	ON	FILE
6	ISSUED FOR SECOND 10 YEAR ISI PROGRAM	CB	MTF JBG	WDE	MDP ECC
NO. DATE	REVISIONS	BY	CHK	ENGR.	ENGR. SUPV. DESG. REV.
SCALE: N.T.S.	DESIGNED	DRAWN: CB	DATE		
DAVIS-BESSE NUCLEAR POWER STATION UNIT NO. 1					
THE TOLSON DESIGN COMPANY					
INSERVICE EDITION DIAGRAM MAIN STEAM AND REHEAT SYSTEM SHEET 1					
DRAWING NO.					REV.
IS102-003A					5