

1.11 - FIGURES

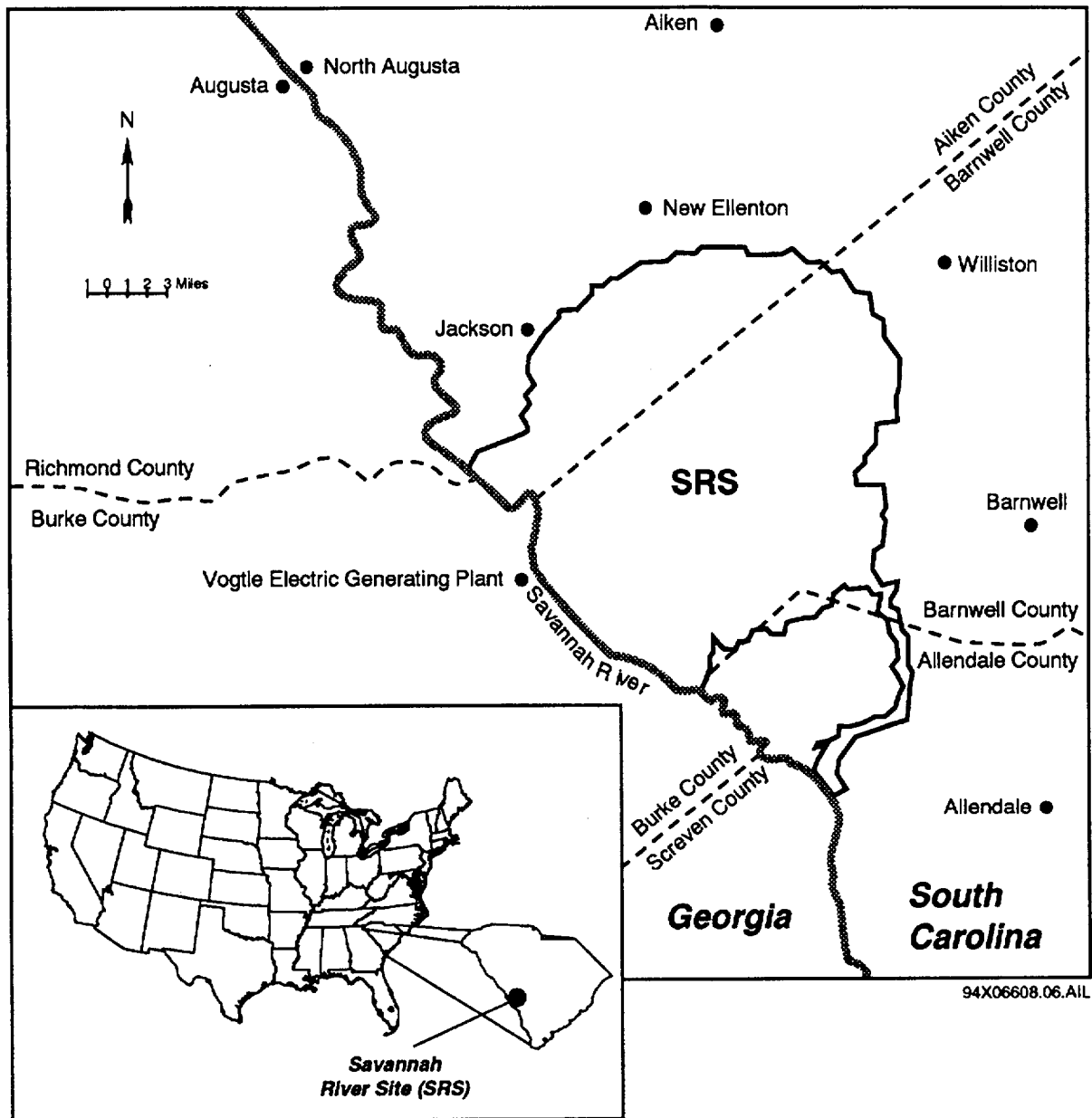


Figure 1.3-1 Savannah River Site Map (Sheet 1 of 2)

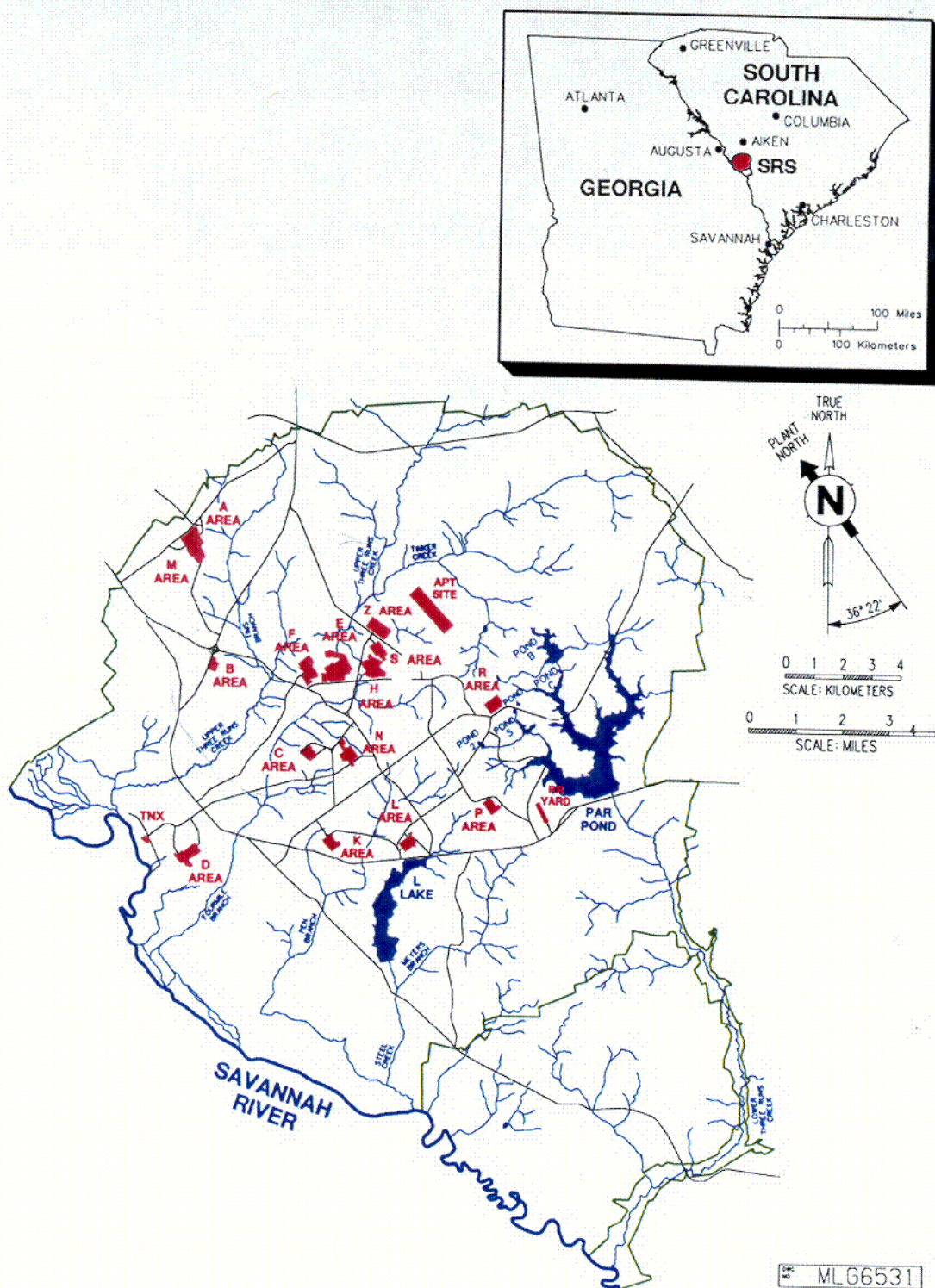


Figure 1.3-1 Savannah River Site Map (Sheet 2 of 2)

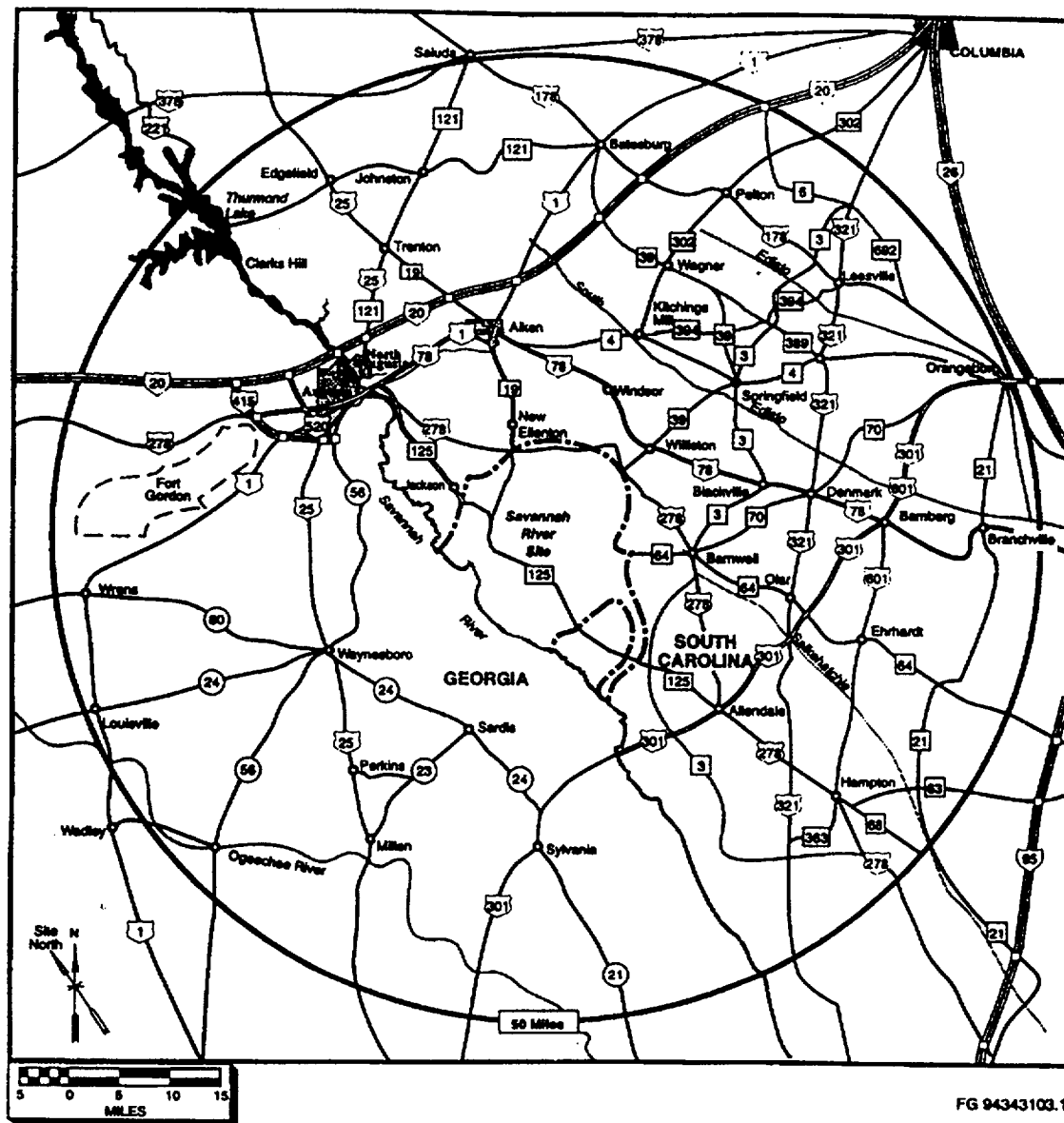


Figure 1.3-2 50-Mile Vicinity of SRS

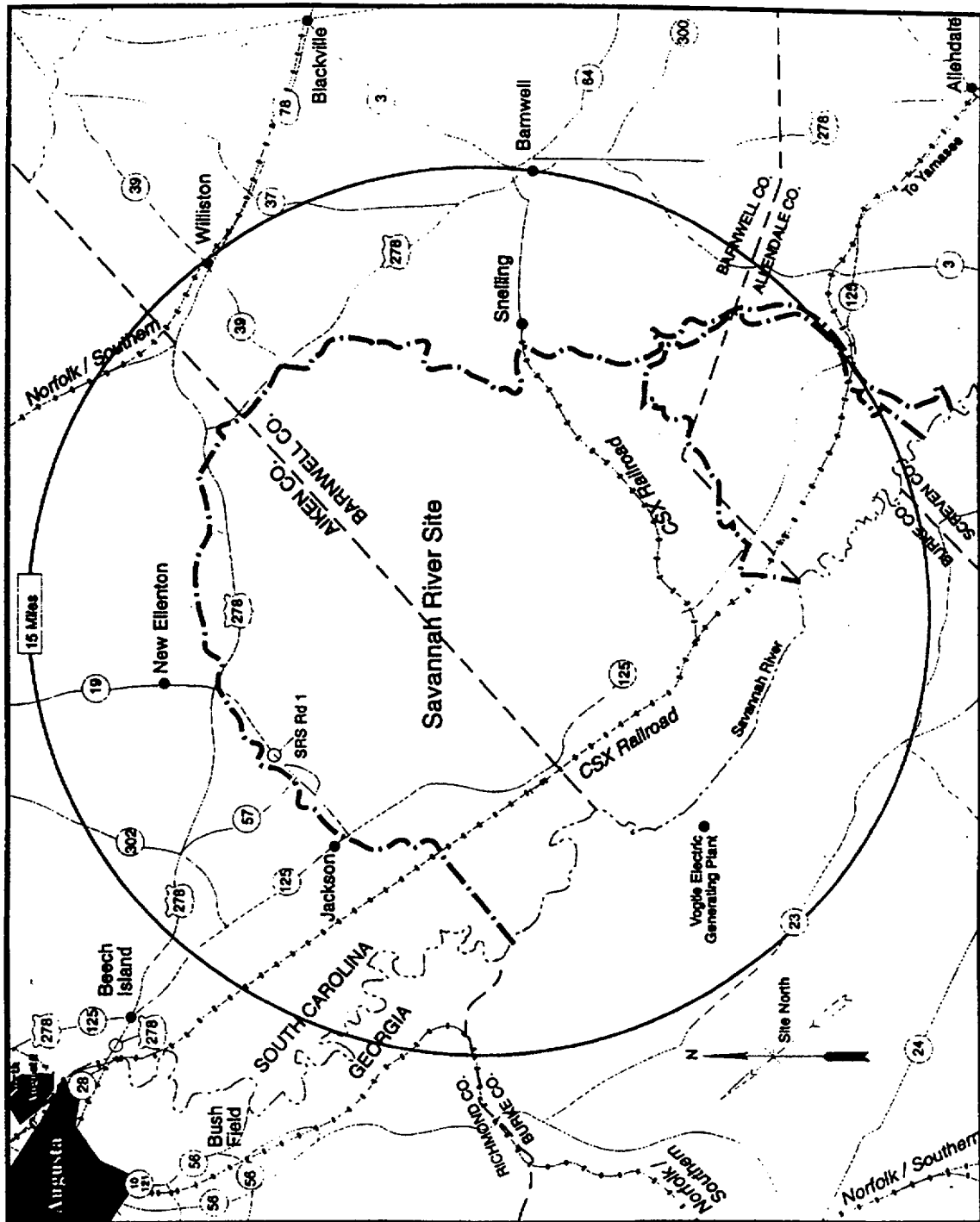
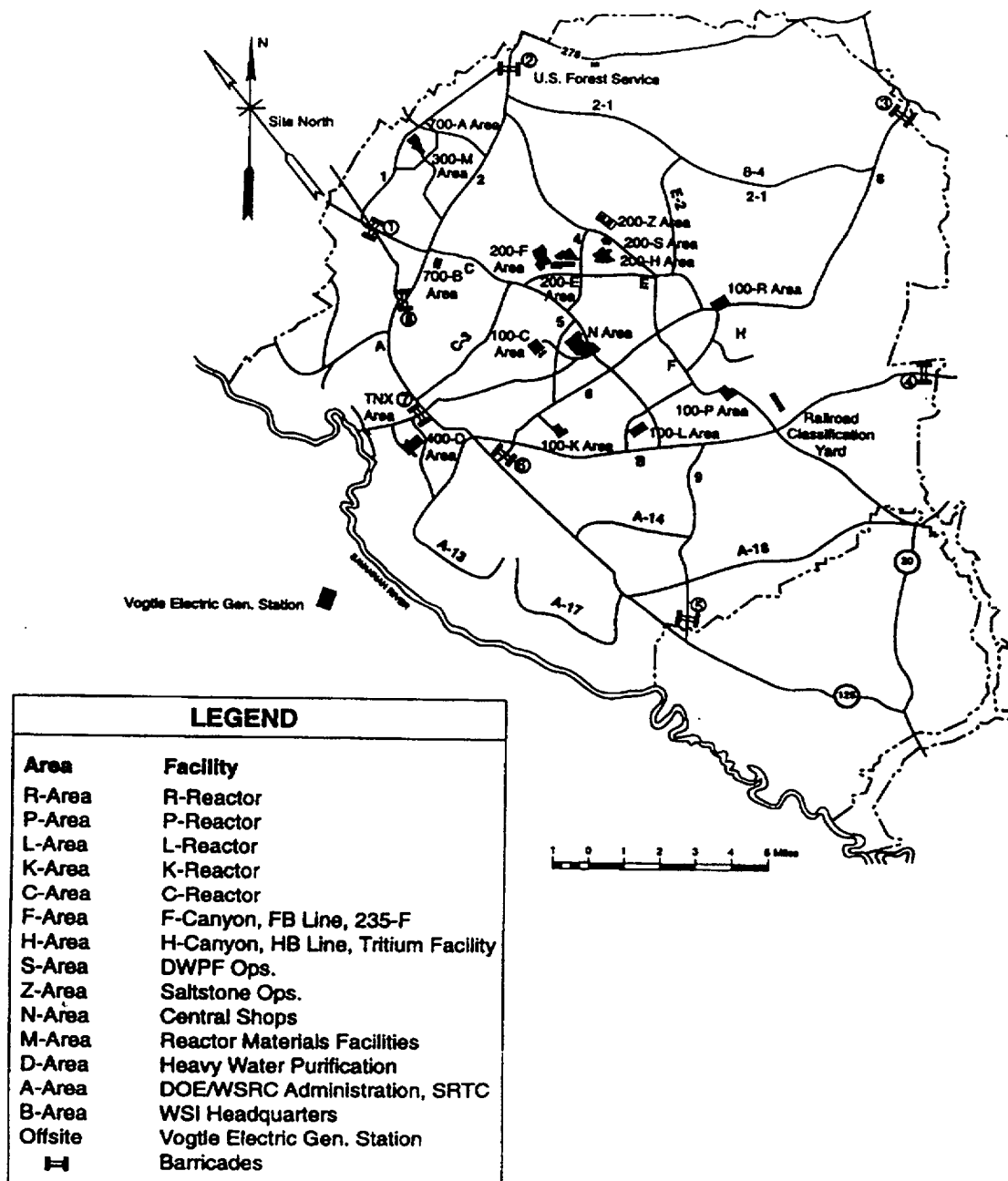


Figure 1.3-3 Map Showing 15-Mile Radius from SRS Center



FG 94343105.1

Figure 1.3-4 SRS Map Showing Key Facilities

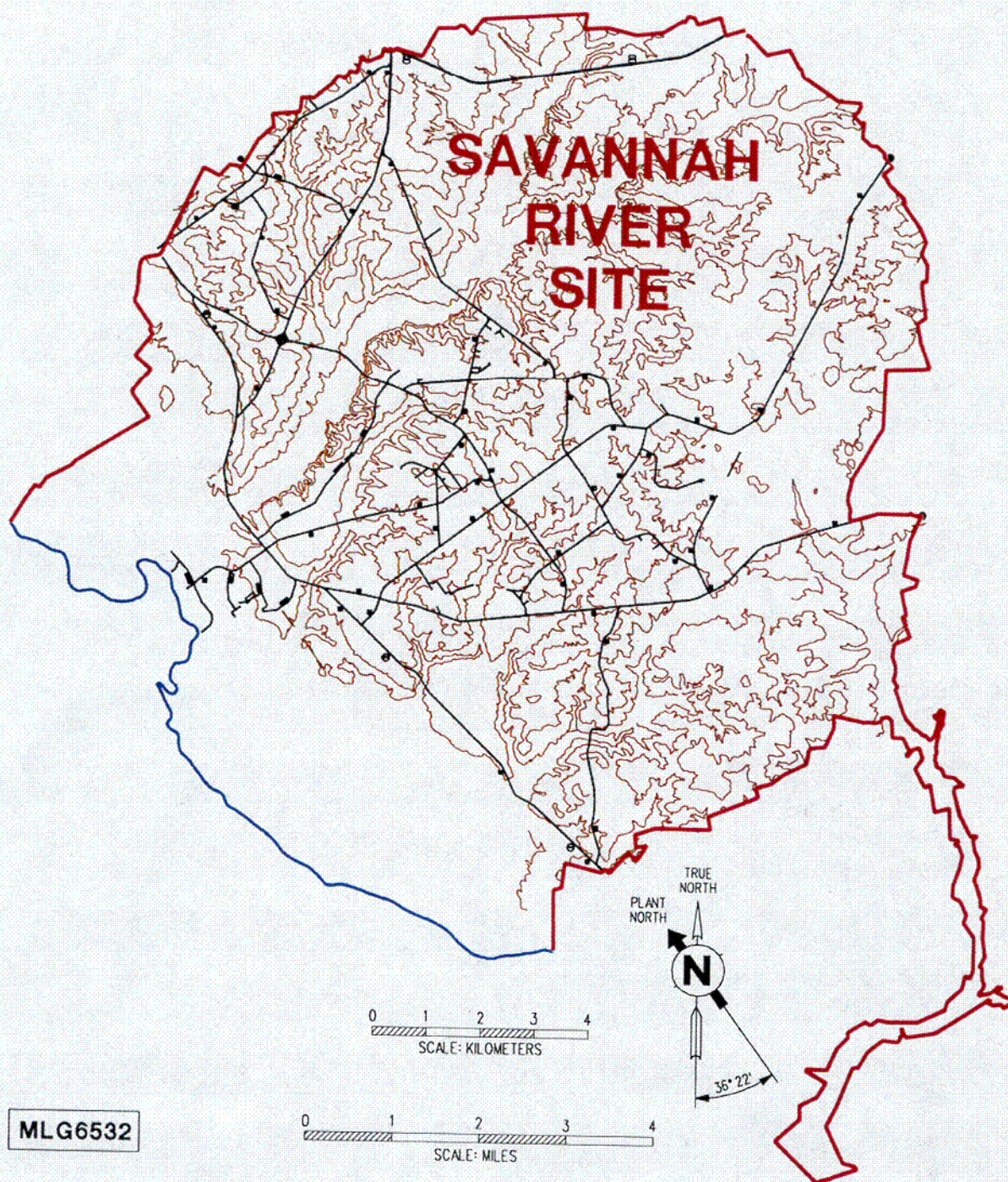
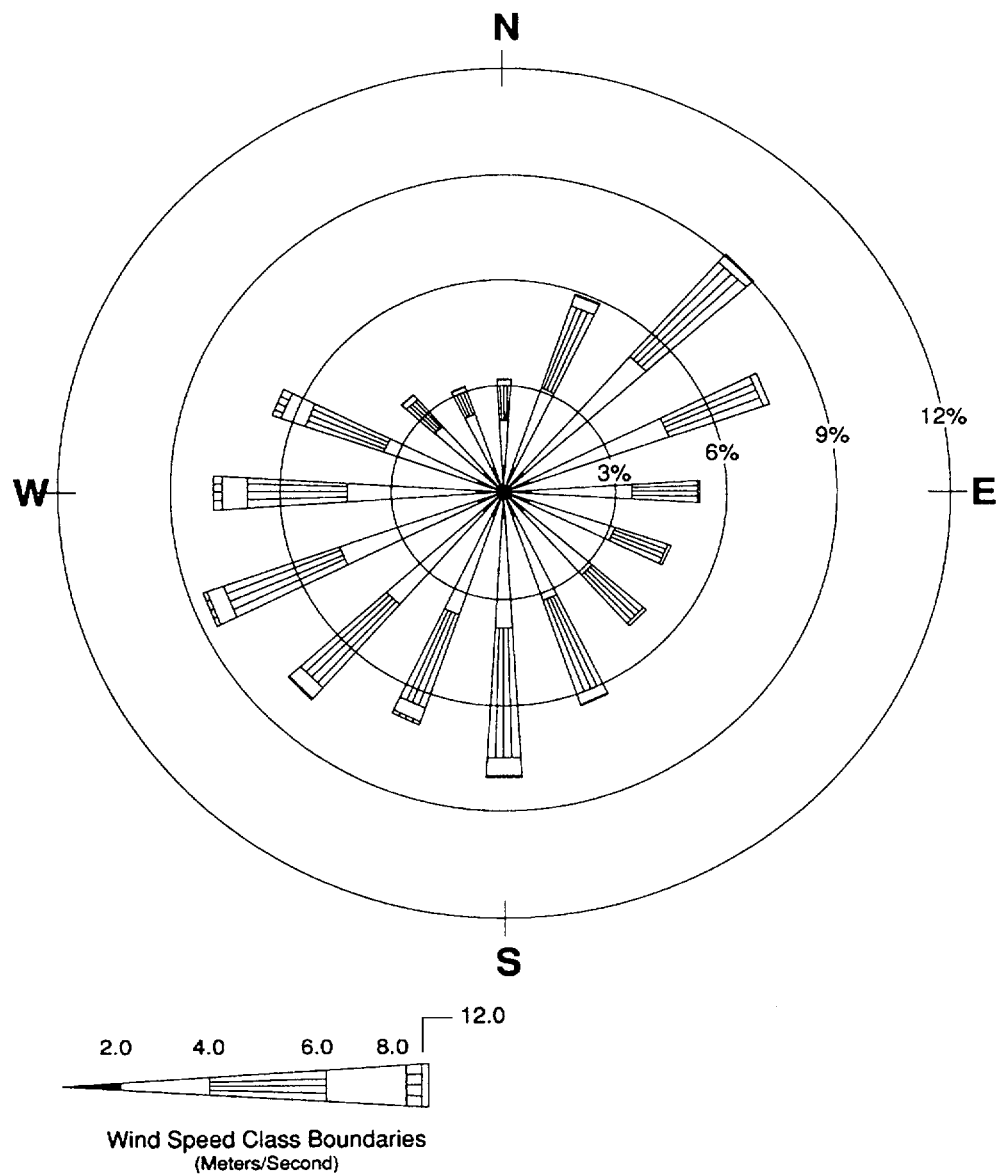


Figure 1.3-5 Topographic Map of SRS



Wind Rose for SRS, 1987-1991. The wind rose plot shows the percent of occurrence frequencies of wind direction and speed at SRS. The plot is based on hourly averaged wind data from the SRS meteorological tower network for the 5-year period 1987-1991. Measurements were taken 200 feet above the ground. Directions indicated are from which the wind blows.

Source: Environmental Report for 1996, WSRC-TR-97-0171

Figure 1.3-6 Wind Rose Diagram for SRS

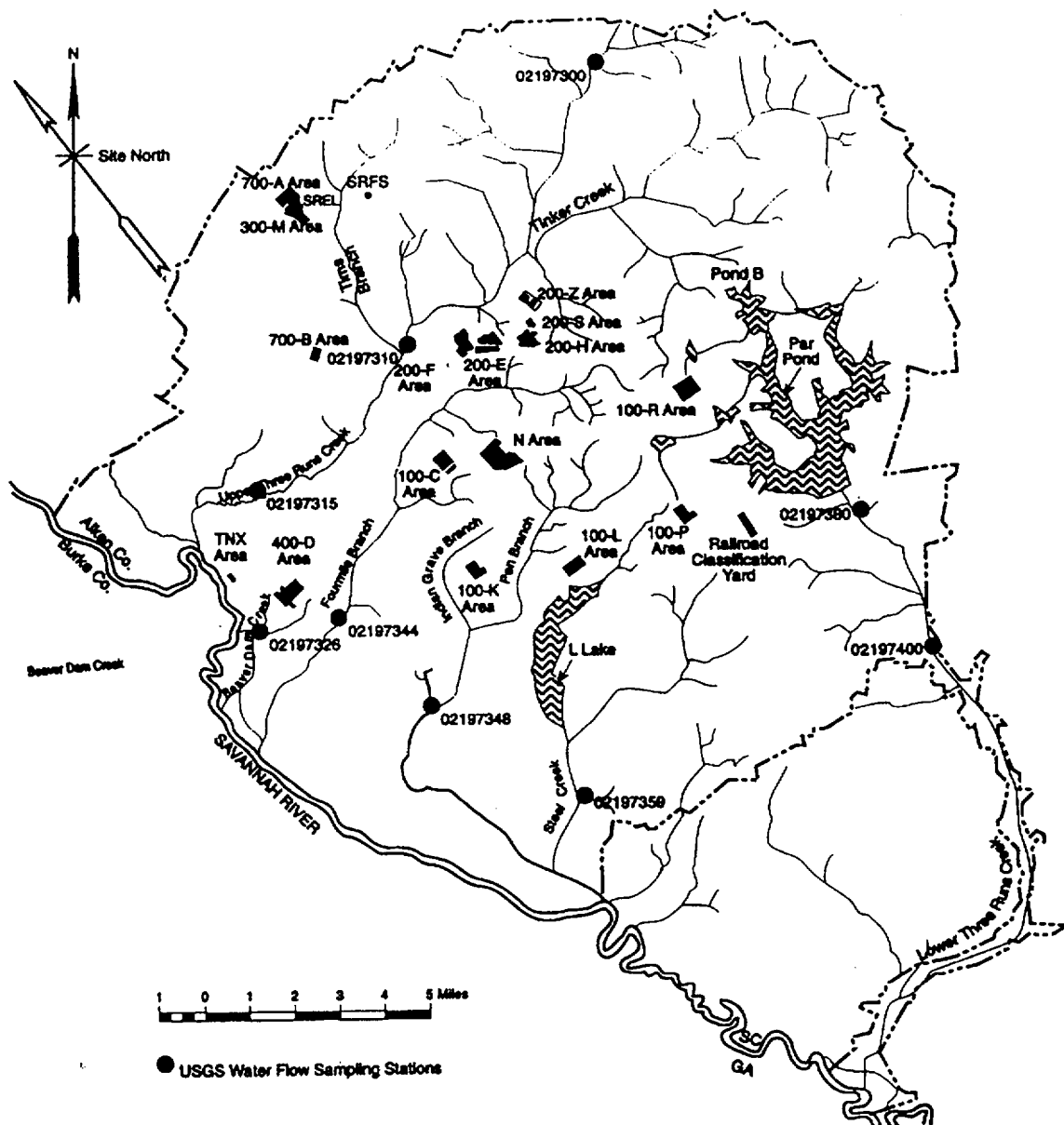


Figure 1.3-7 Surface Drainage Map of SRS

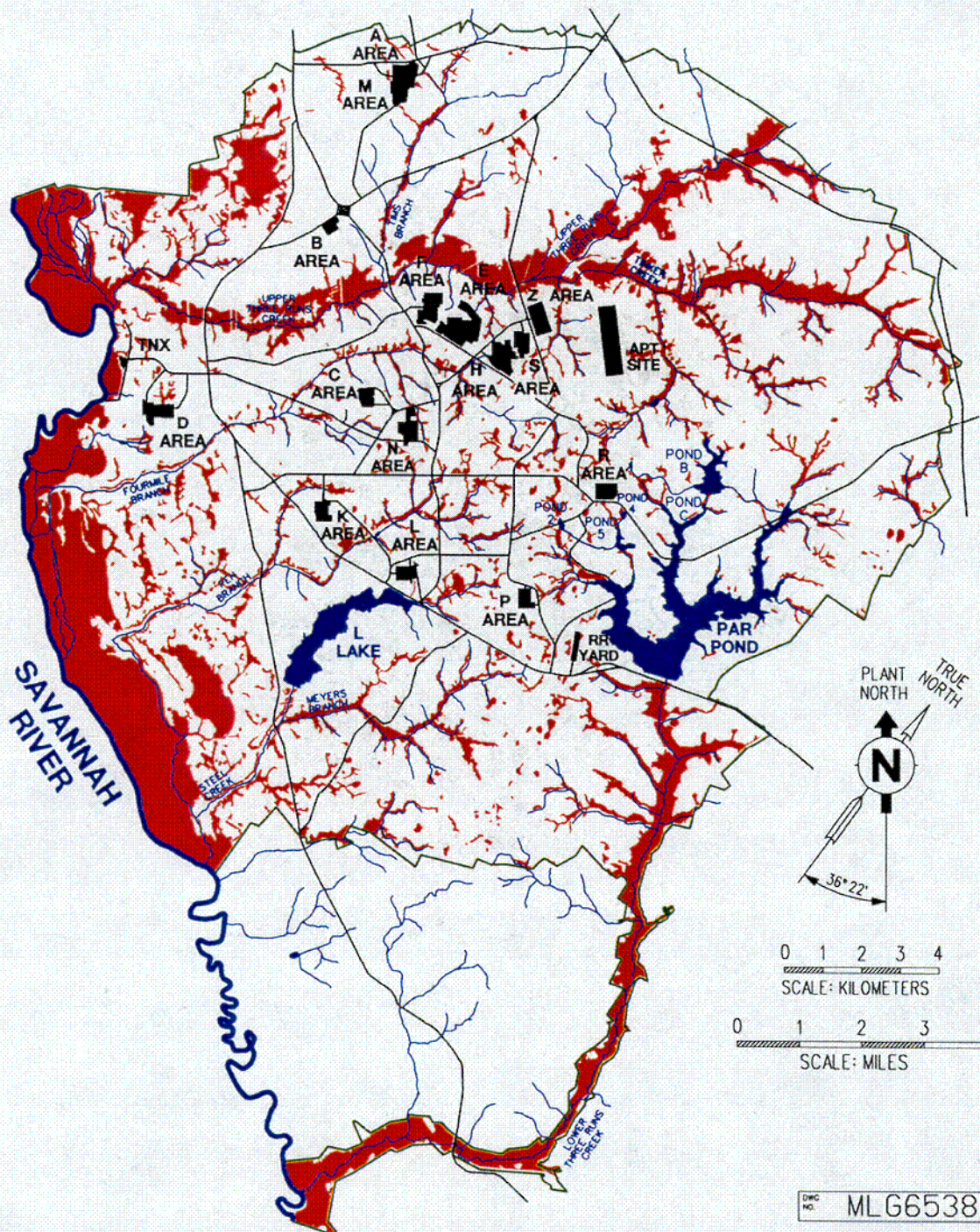


Figure 1.3-8 Major Rivers and Adjacent Wetland Areas

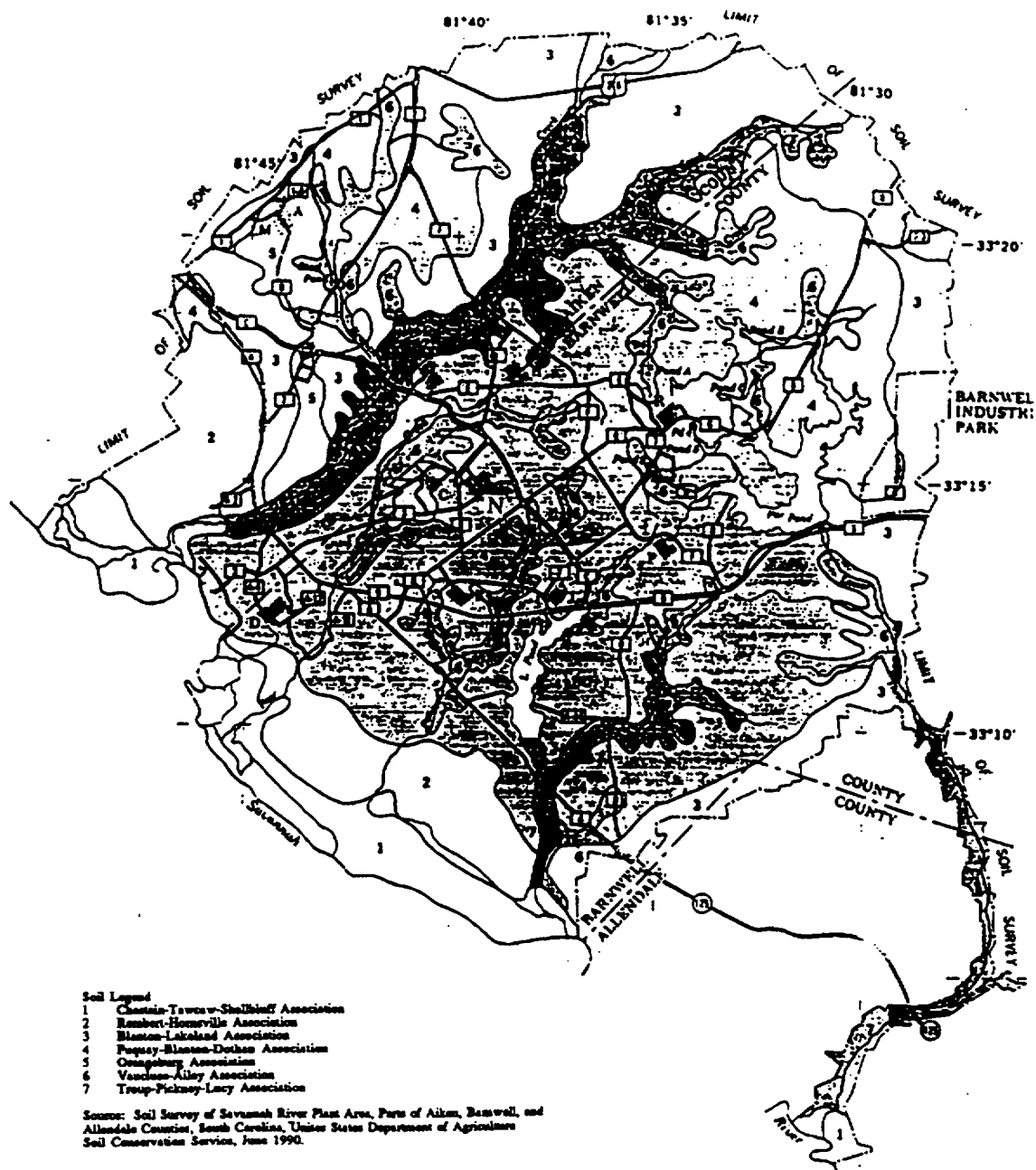


Figure 1.3-9 Soils Map of SRS

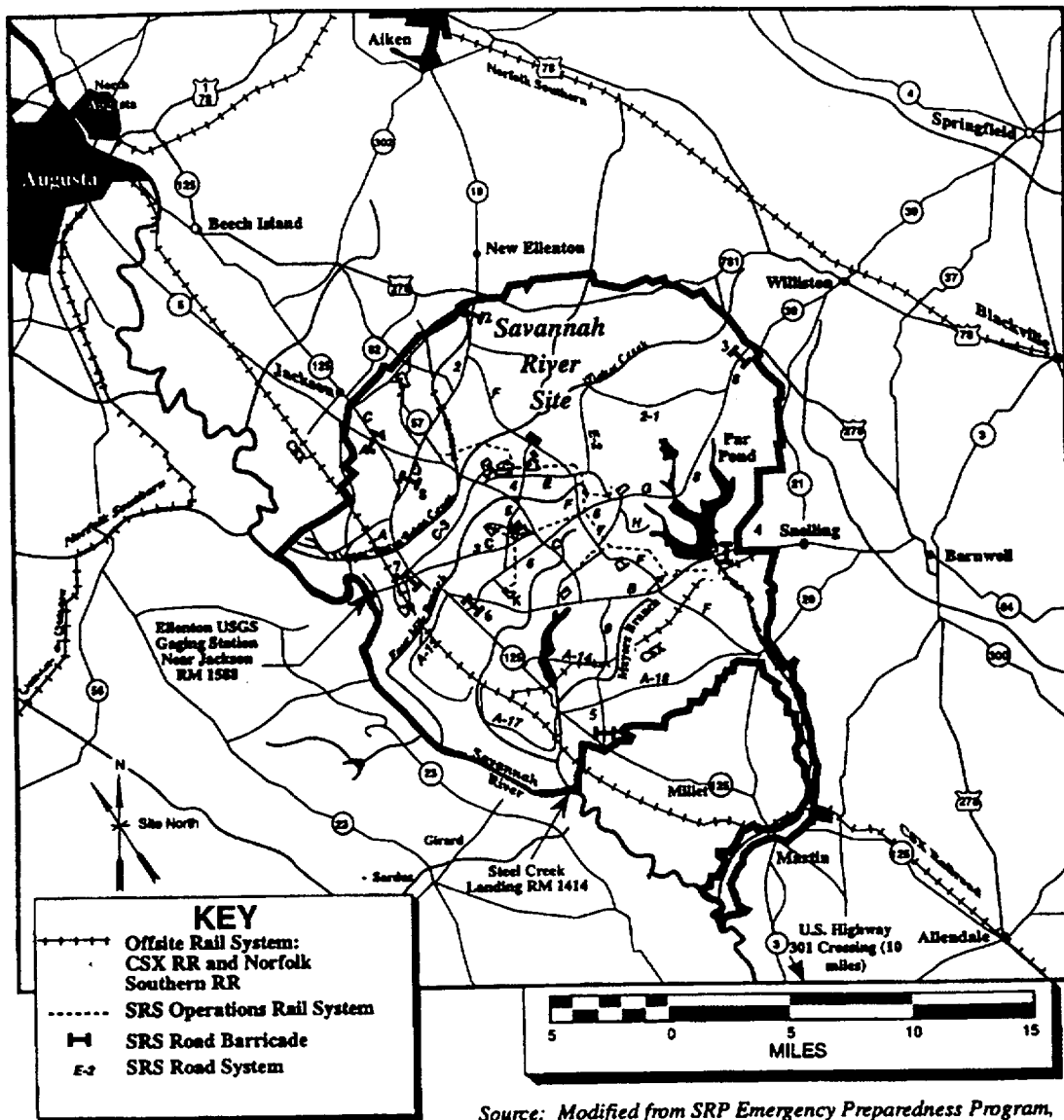


Figure 1.3-10 SRS Road System

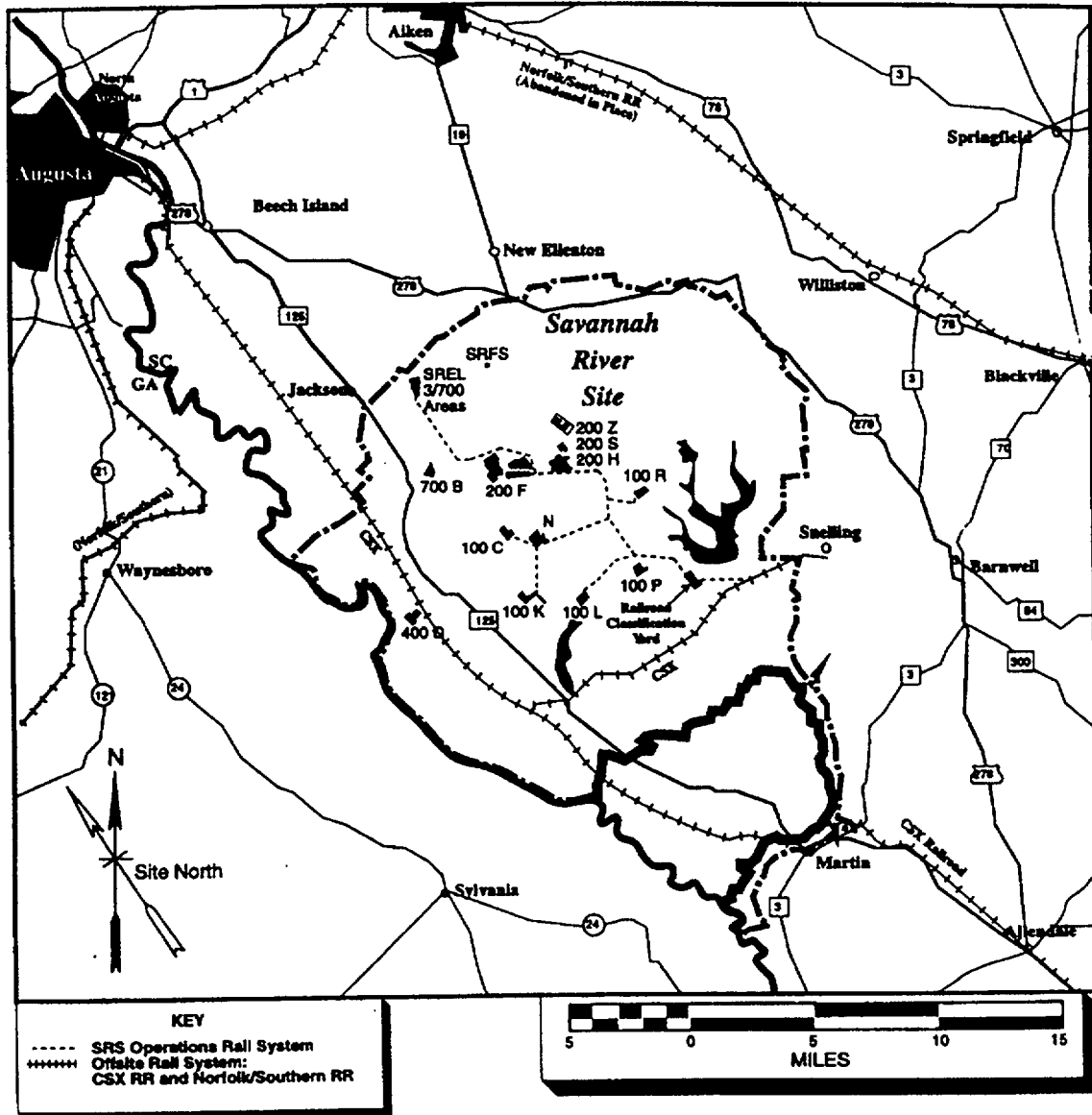


Figure 1.3-11 Railroad Network in the Vicinity of SRS

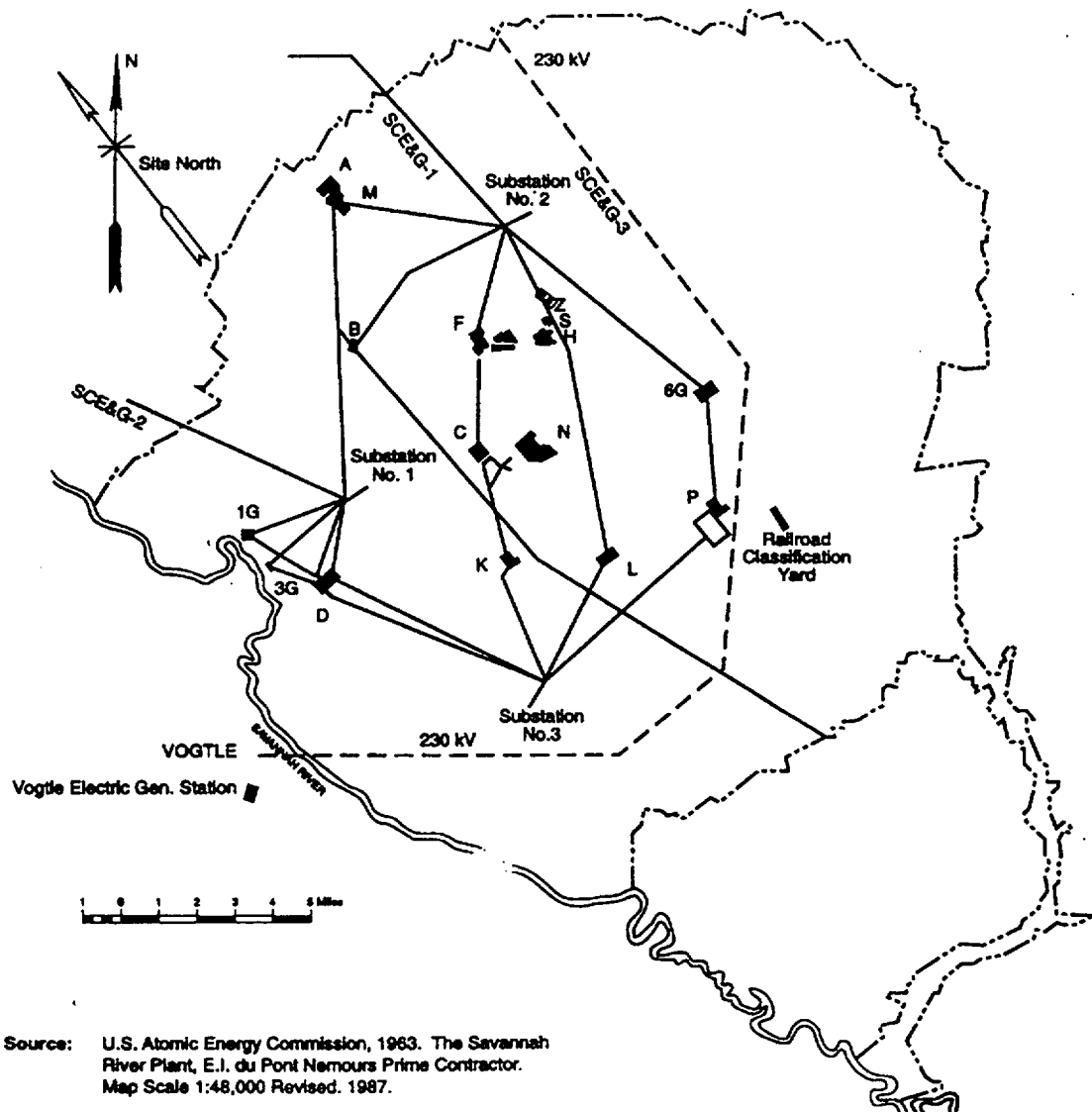


Figure 1.3-12 Electrical Transmission Lines

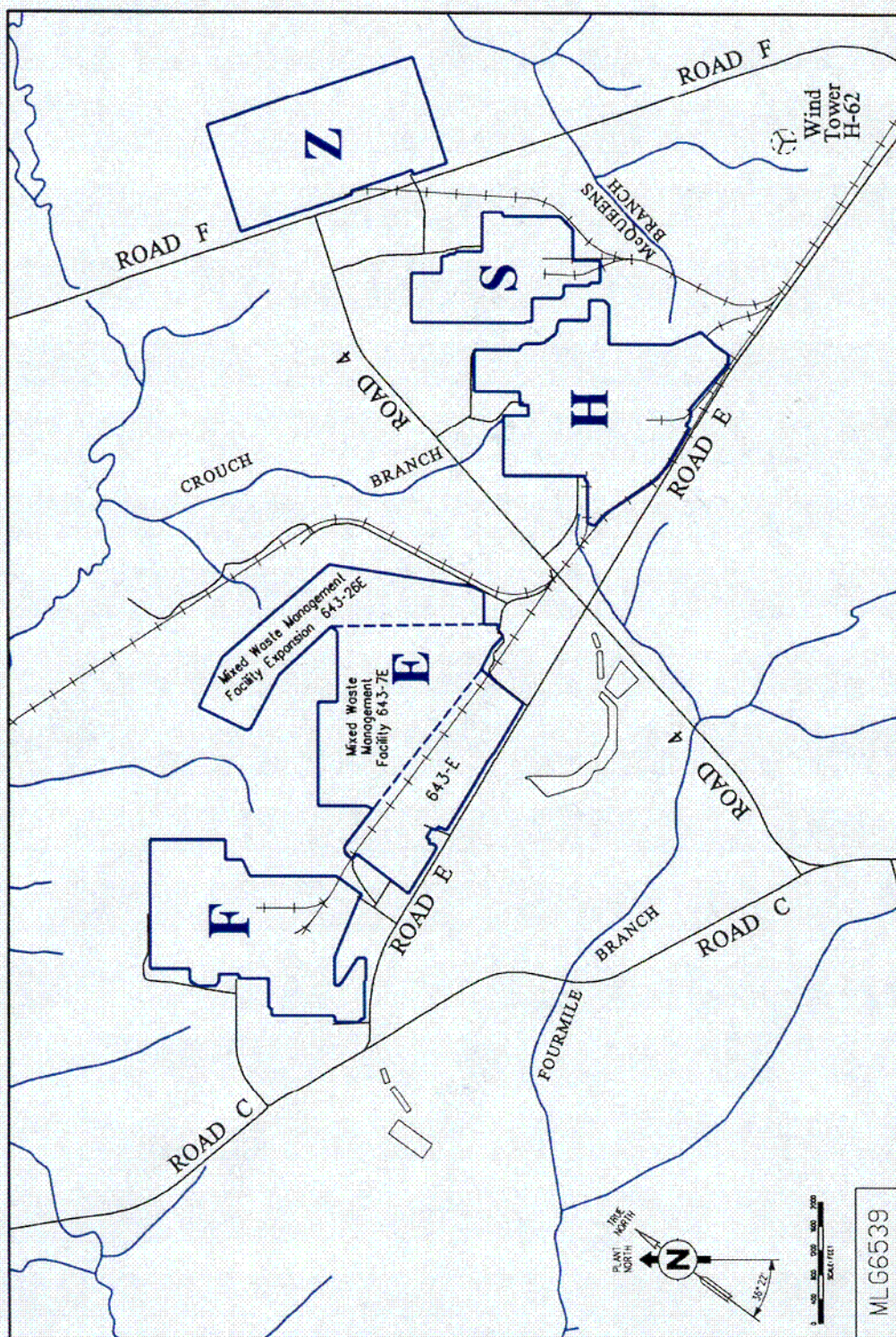
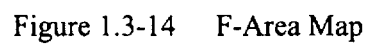


Figure 1.3-13 F, H, S, and Z Area Map

C04



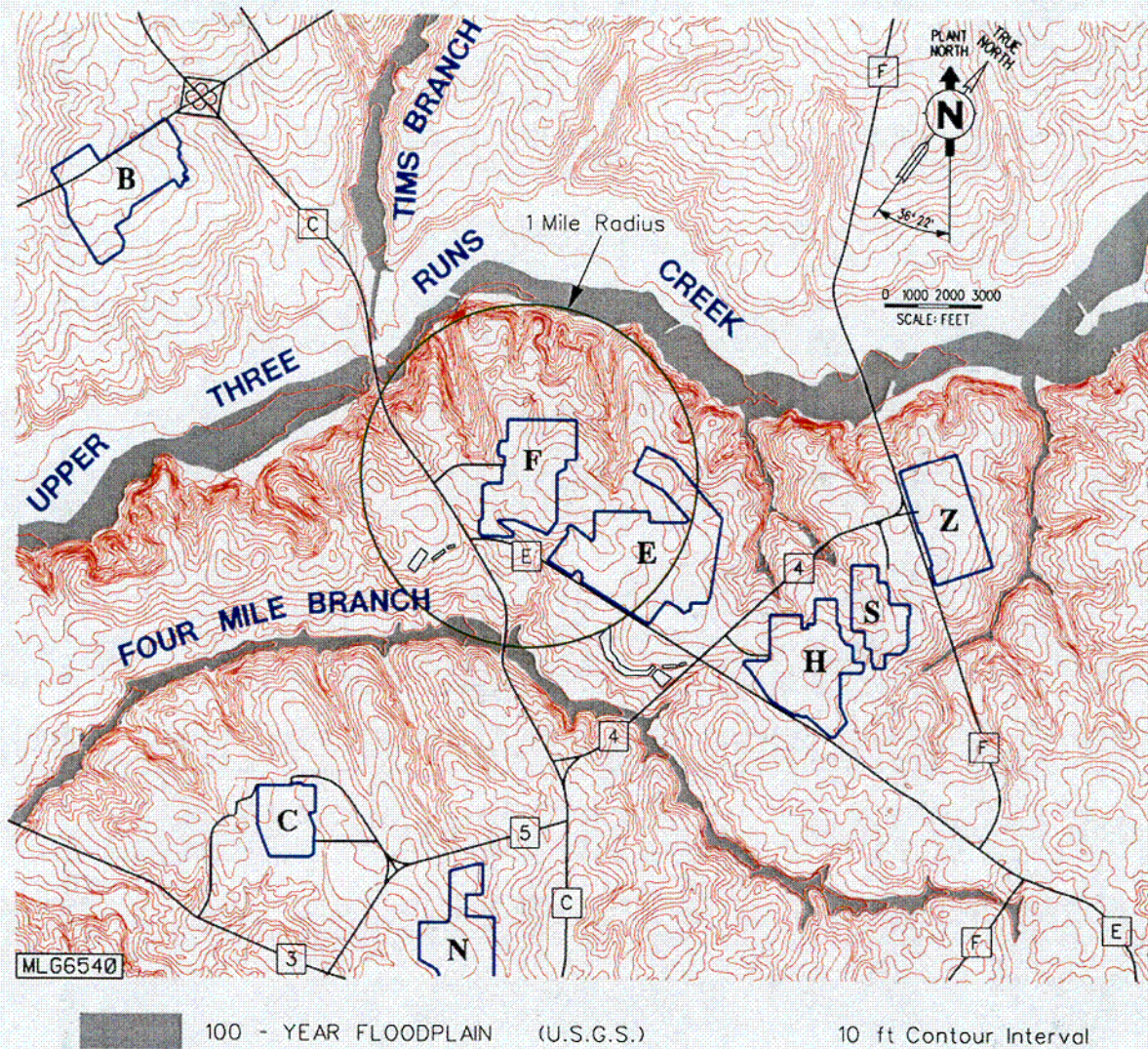


Figure 1.3-15 Topographic Map of F Area and Surrounding Area

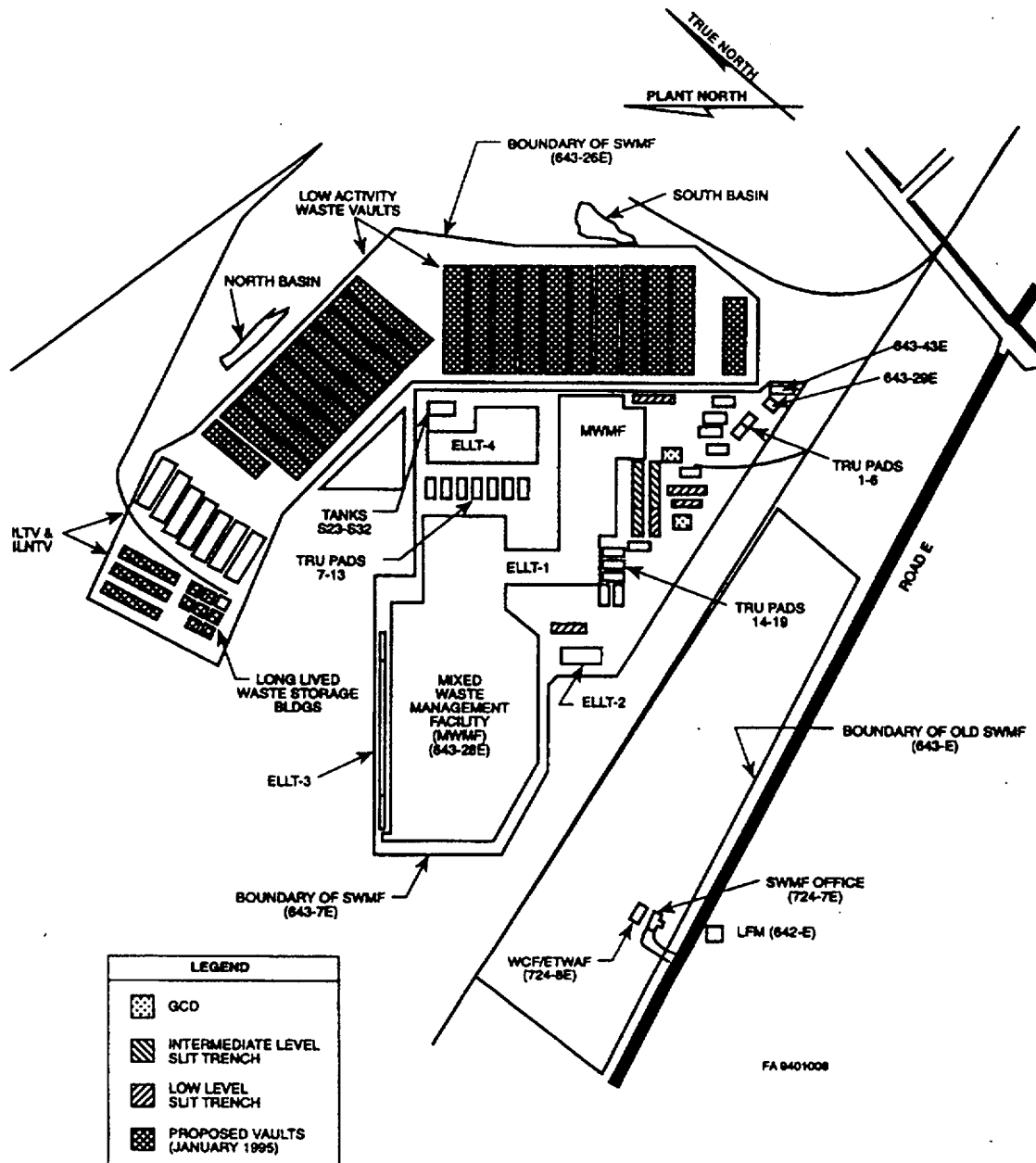


Figure 1.3-16 Solid Waste Management Facilities

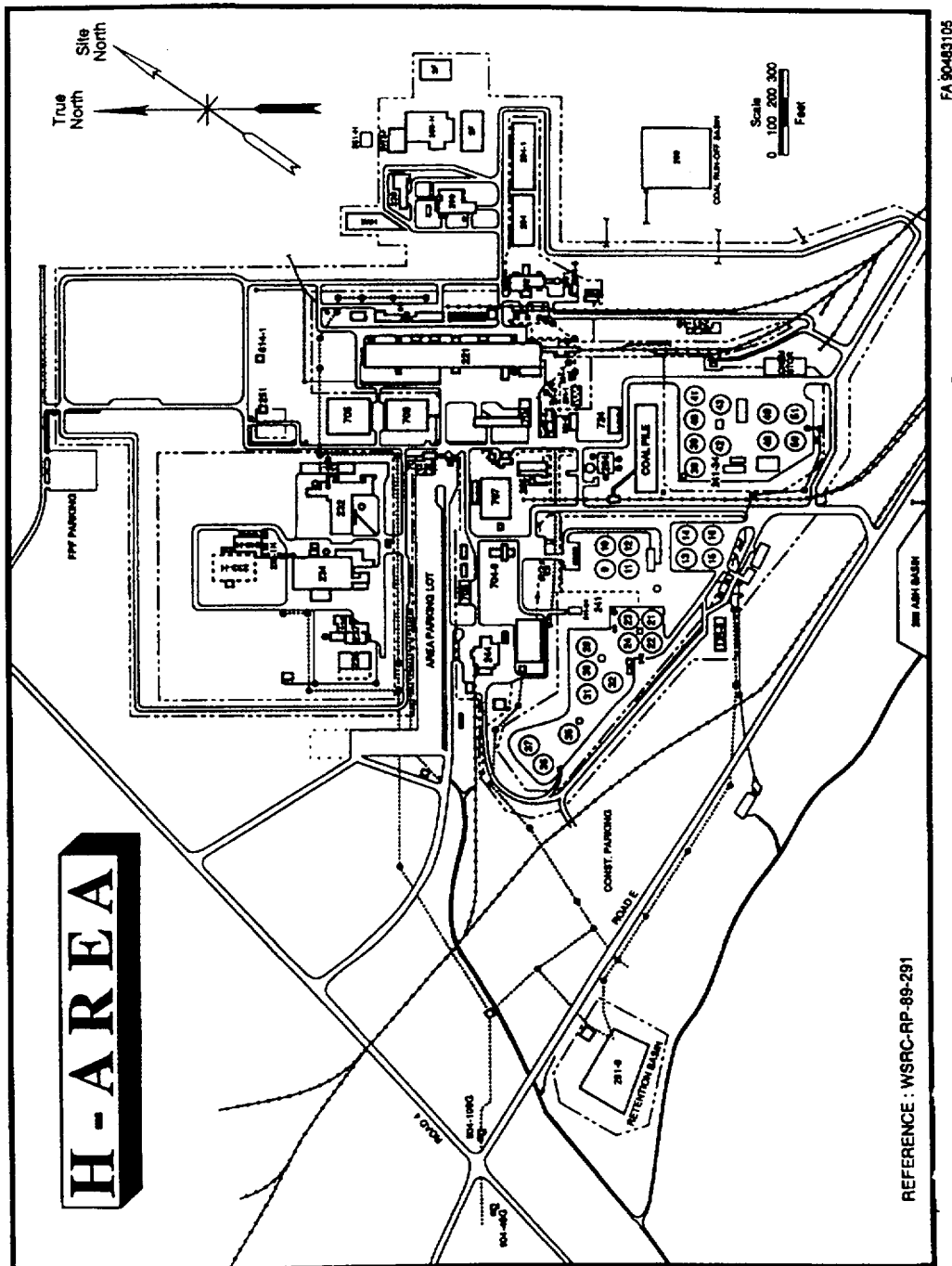


Figure 1.3-17 H-Area Map

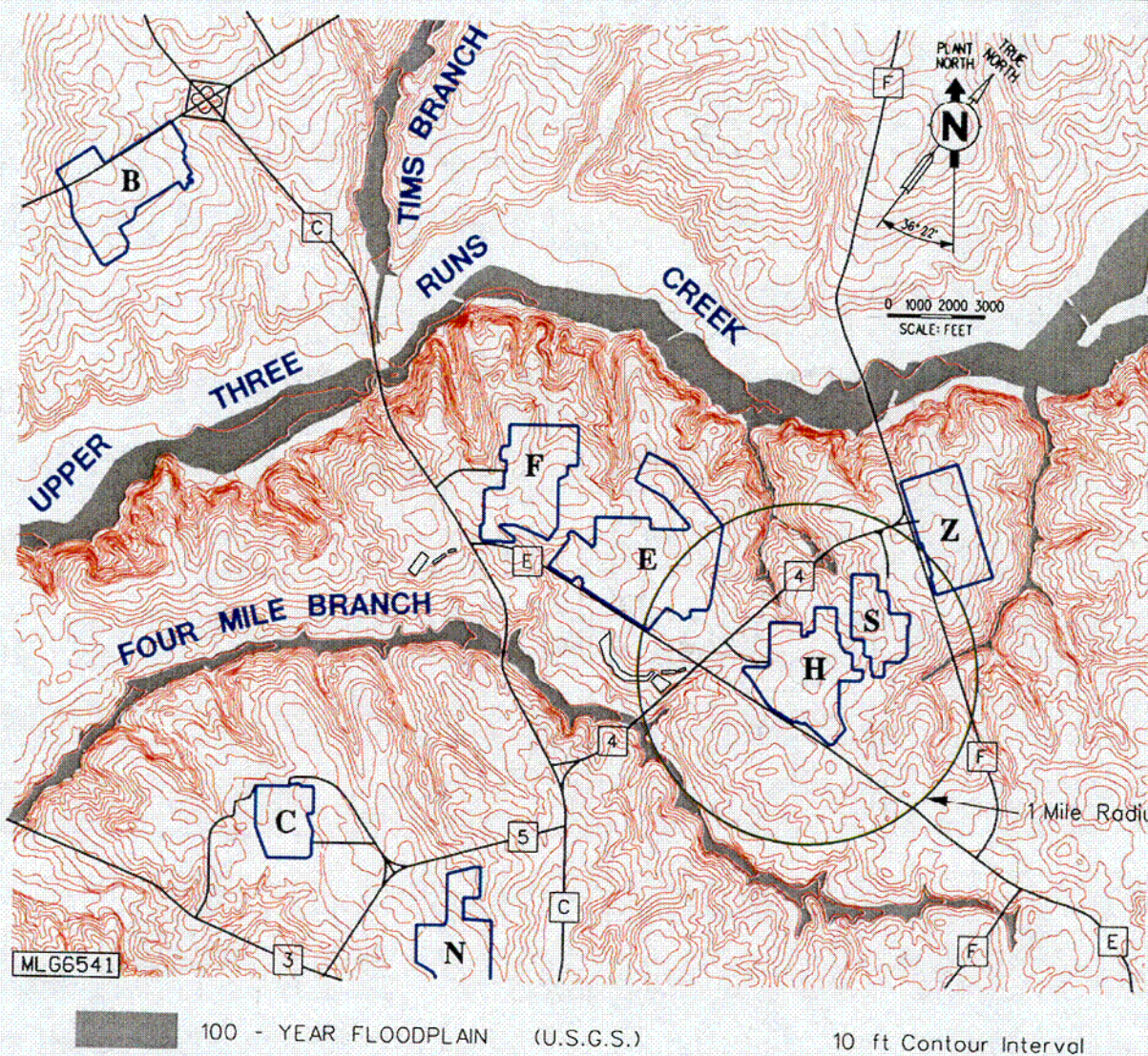


Figure 1.3-18 Topographic Map of H Area

COG

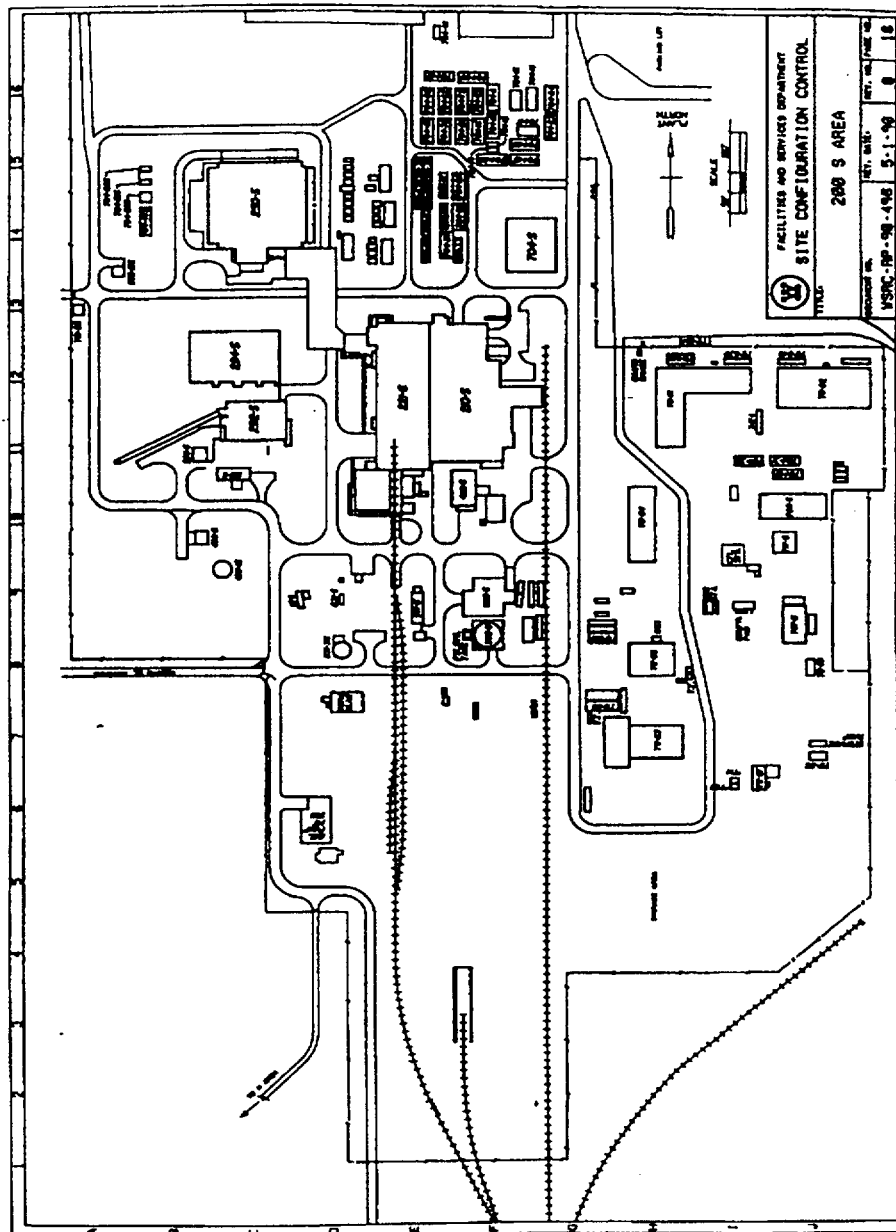


Figure 1.3-19 S-Area Map

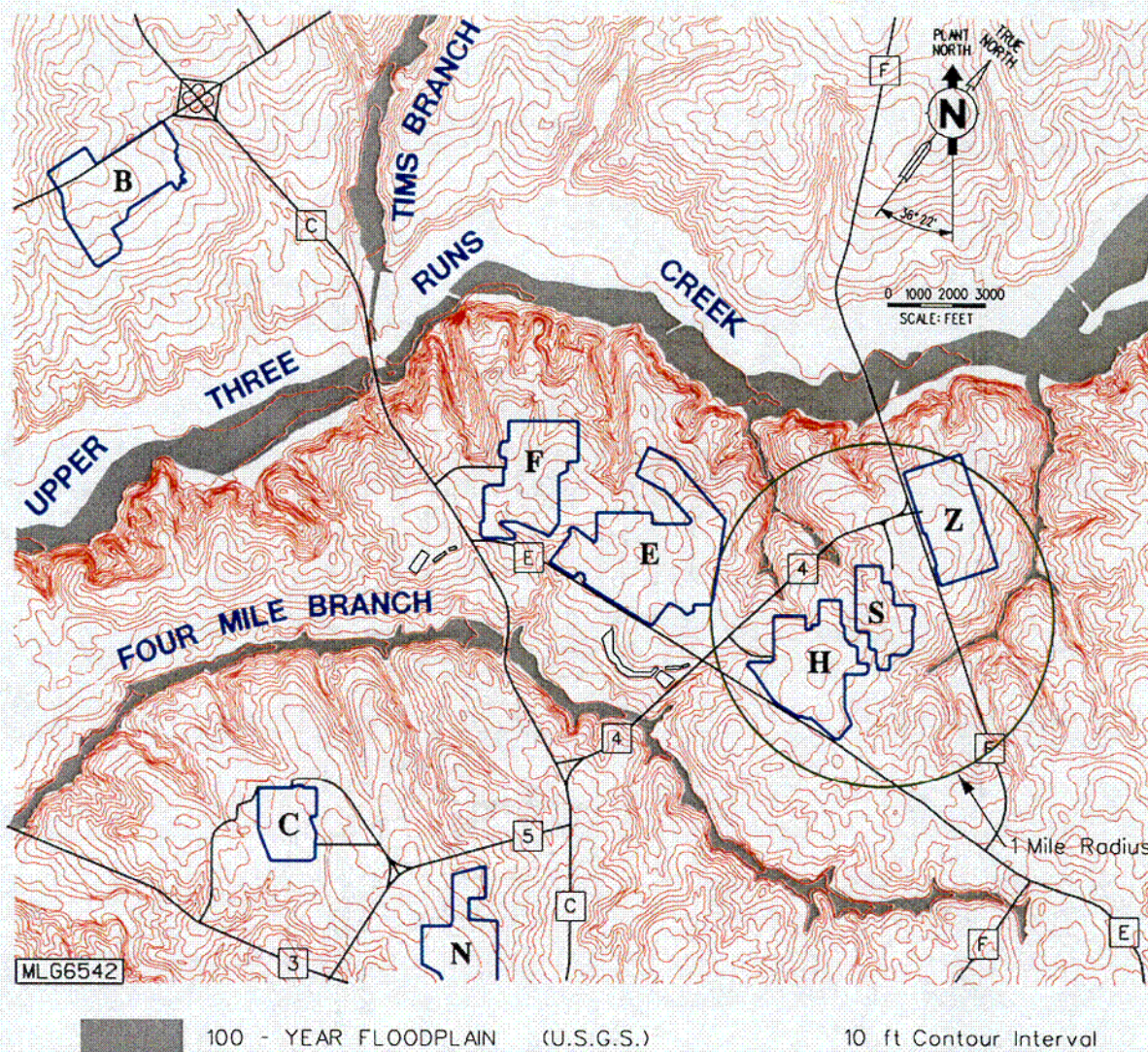


Figure 1.3-20 Topographic Map of S Area

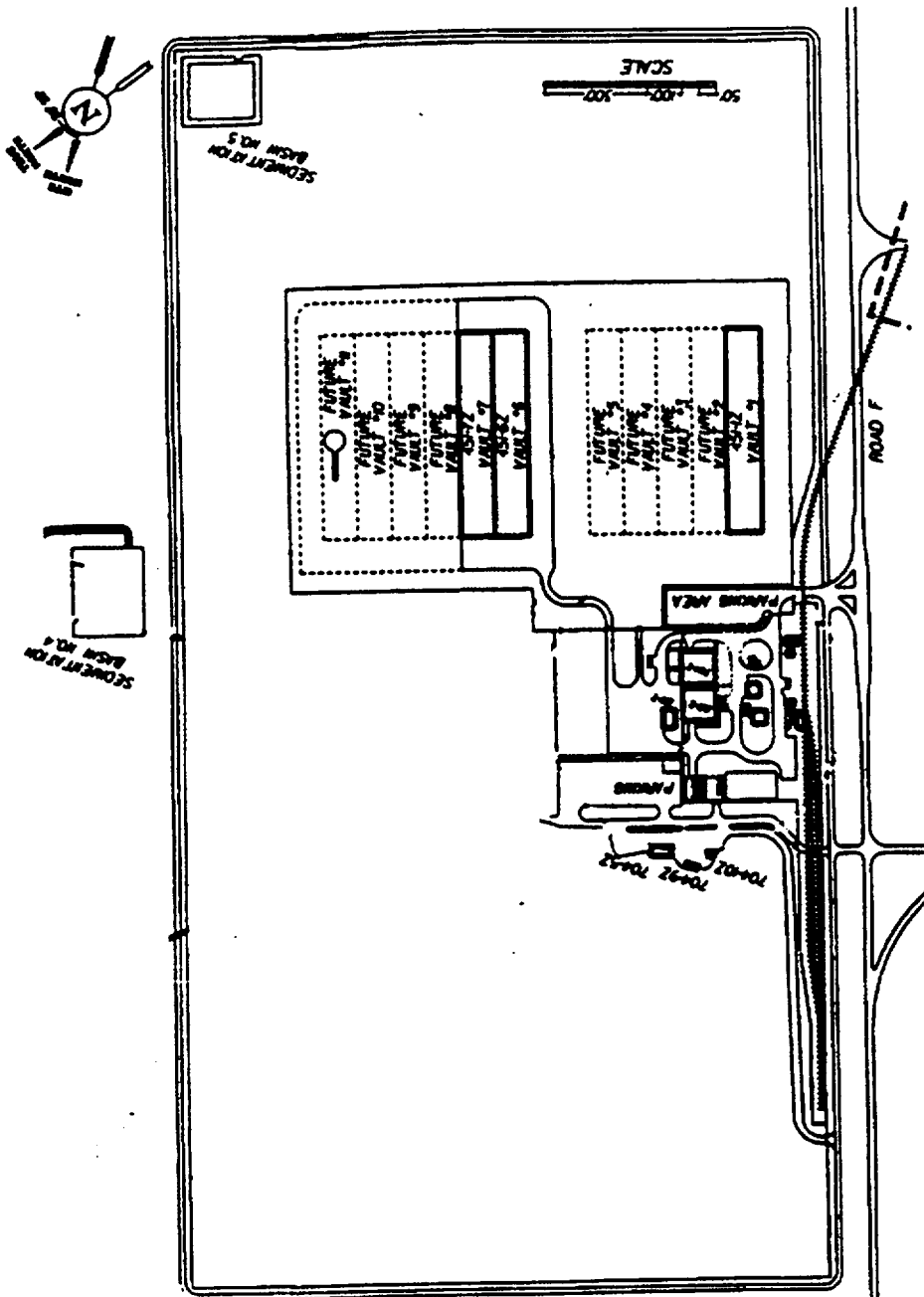
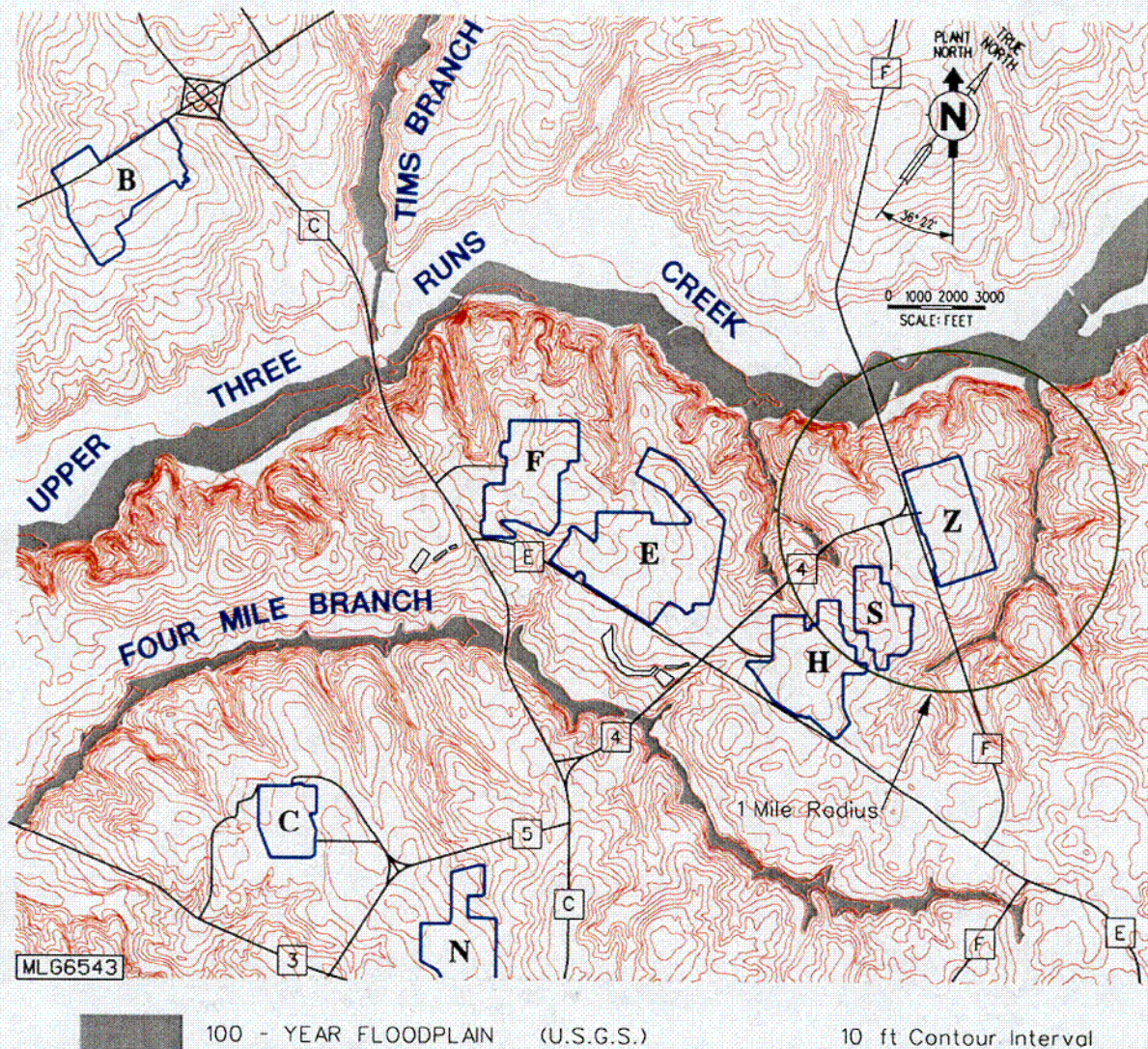


Figure 1.3-21 Z-Area Map (April 1994)



(Note: Figures 1.3-23 through 1.3-26 are intentionally omitted).

Figure 1.3-22 Topographic Map of Z Area

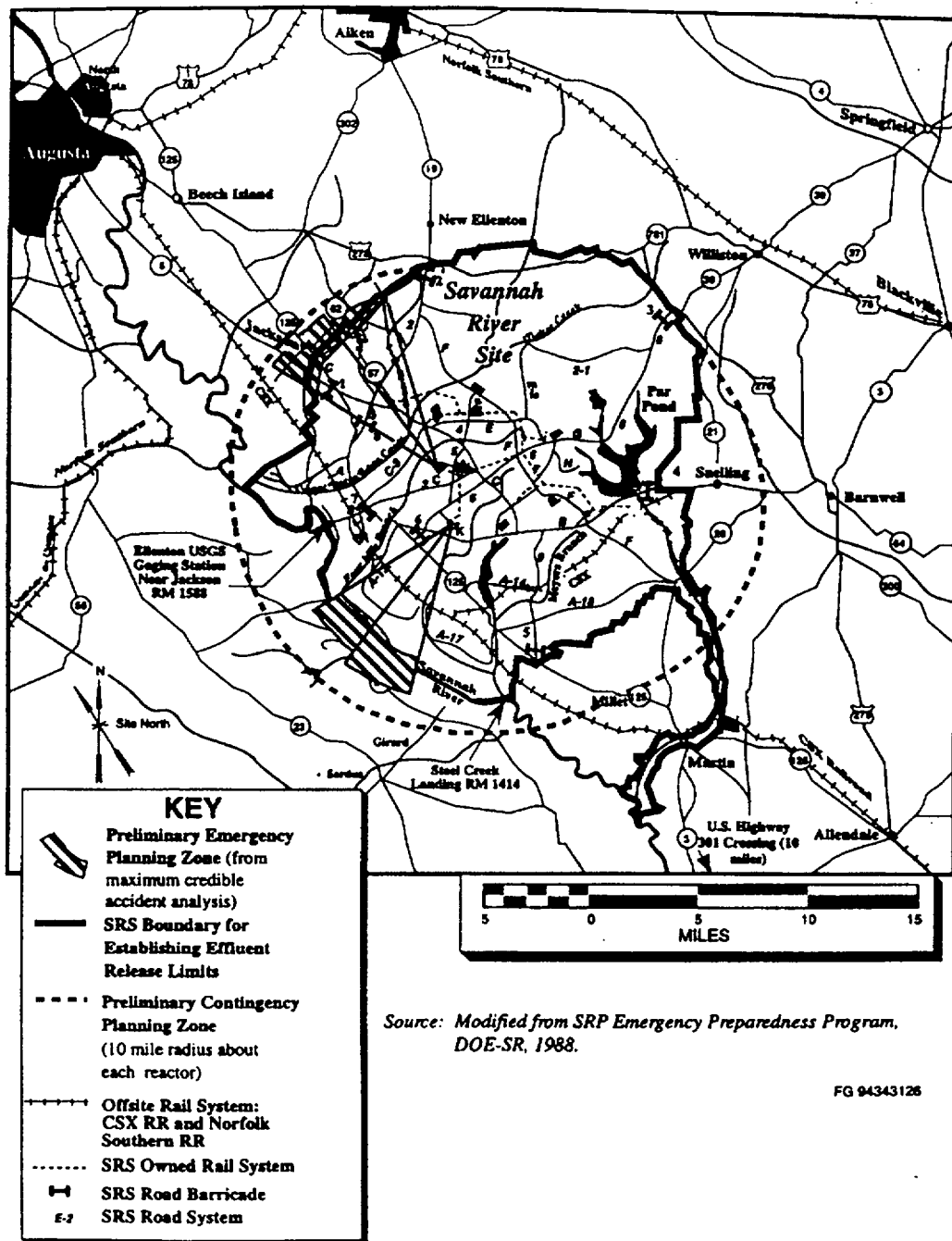
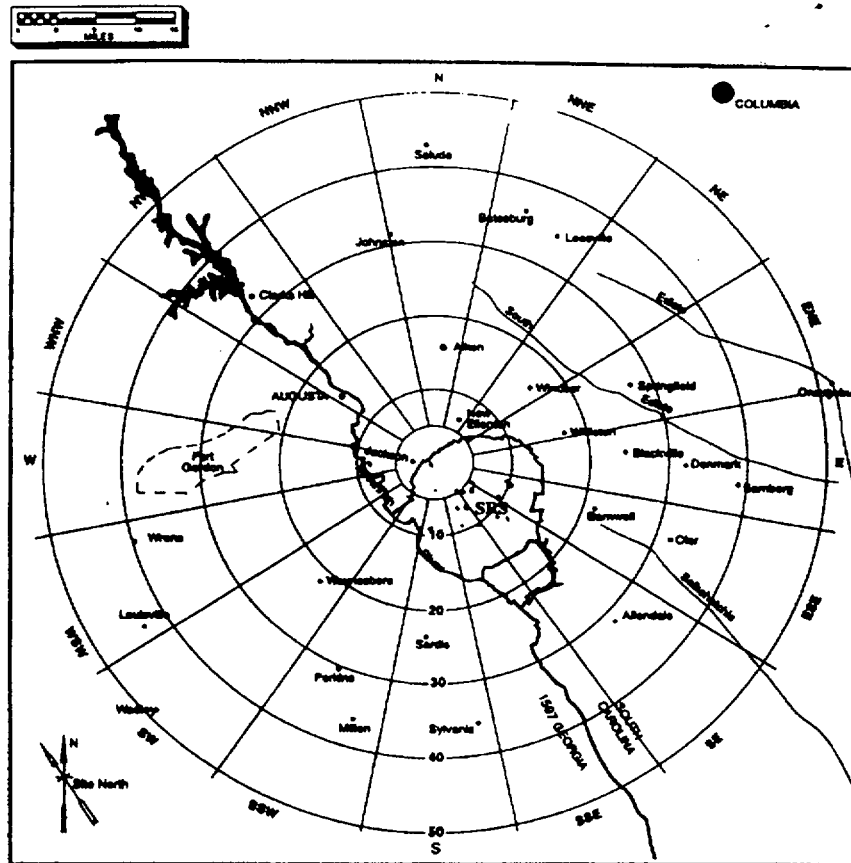


Figure 1.3-27 SRS Emergency Planning Zone

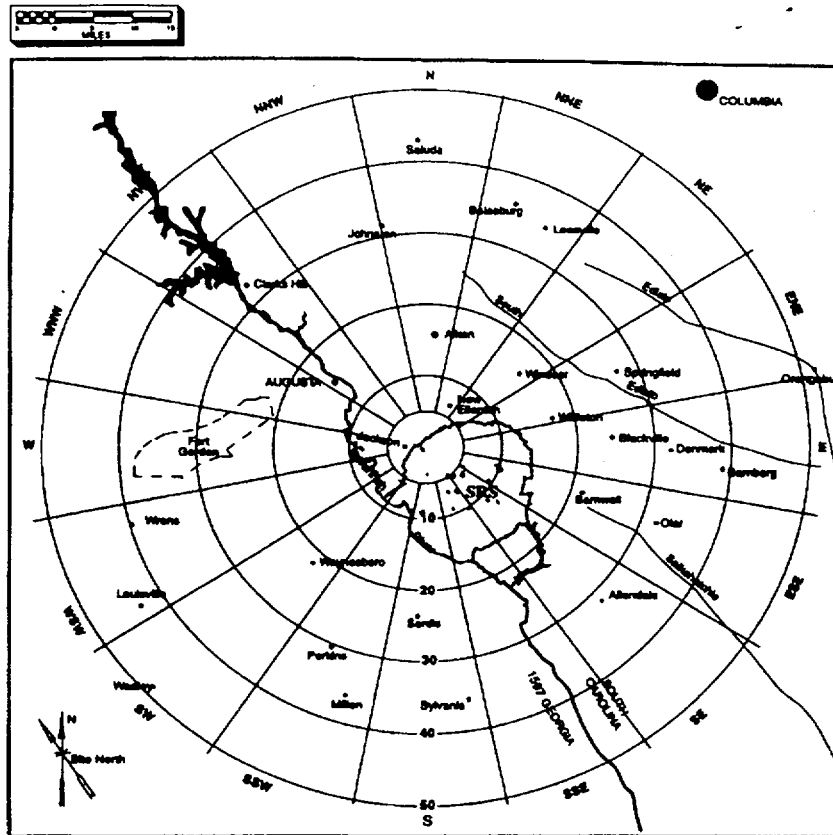


Age-group distribution for population more than 10 mi. away: 51.1% adults, 10.9% teenagers, 37.8% children

SECTOR	DISTANCE (MILES)				
	5-10	10-20	20-30	30-40	40-50
N	26	5319	10012	5067	12210
NNE	6	1320	2065	4446	14366
NE	1	2944	2927	5270	10197
ENE	27	3125	4482	5338	40771
E	155	6742	5303	8814	4334
ESE	36	1556	1931	2711	3253
SE	26	547	6509	6687	8577
SSE	40	391	769	1356	2539
S	1	557	1331	7252	3335
SSW	2	897	2007	4182	2944
SW	17	944	2240	2607	2660
WSW	60	1103	7110	2286	5818
W	55	3313	7938	7995	6780
WNW	449	3341	106832	50316	11550
NW	271	5898	87901	26576	3025
NNW	363	18022	27156	6666	6079

FIG. 1.3-28

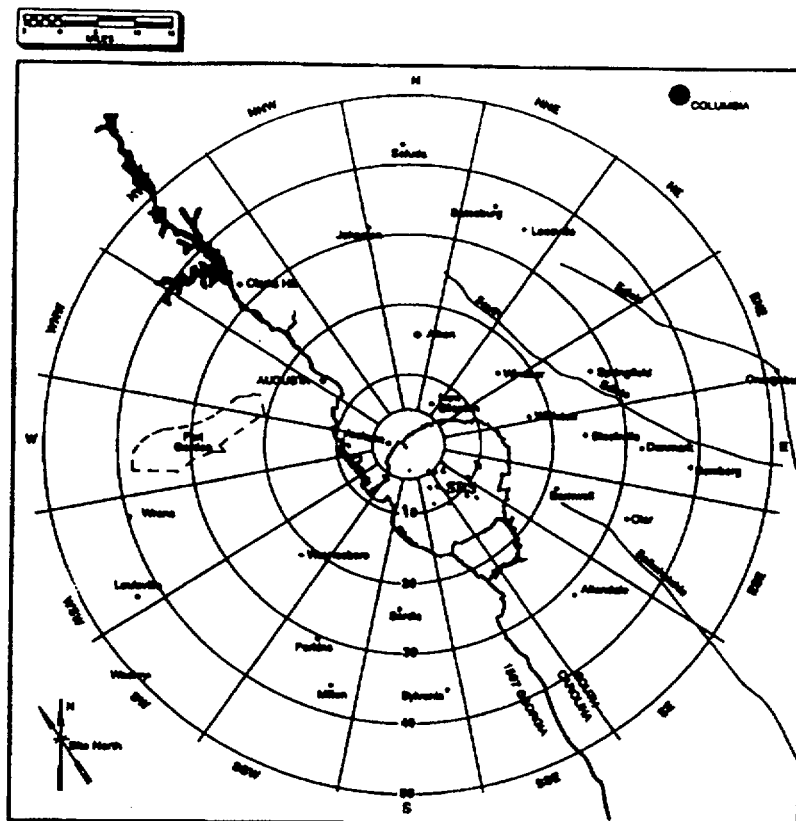
Figure 1.3-28 Total Population Distribution Within 50 Miles SRS Center, 1990



SECTOR	DISTANCE (MILES)				
	5-10	10-20	20-30	30-40	40-50
N	30	6064	11414	5776	13919
NNE	7	1505	2354	5068	16377
NE	1	3356	3337	6008	11625
ENE	31	3563	5109	6085	46479
E	177	7686	6045	10048	4941
ESE	41	1774	2201	3091	3708
SE	30	624	7420	7623	9778
SSE	46	446	877	1546	2894
S	1	635	1517	8267	3802
SSW	2	1023	2288	4767	3356
SW	19	1076	2554	2972	3032
WSW	68	1257	8105	2606	6633
W	63	3777	9049	9114	7729
WNW	512	3809	121788	57360	13167
NW	309	6724	100207	30297	3449
NNW	414	20545	30958	7599	6930

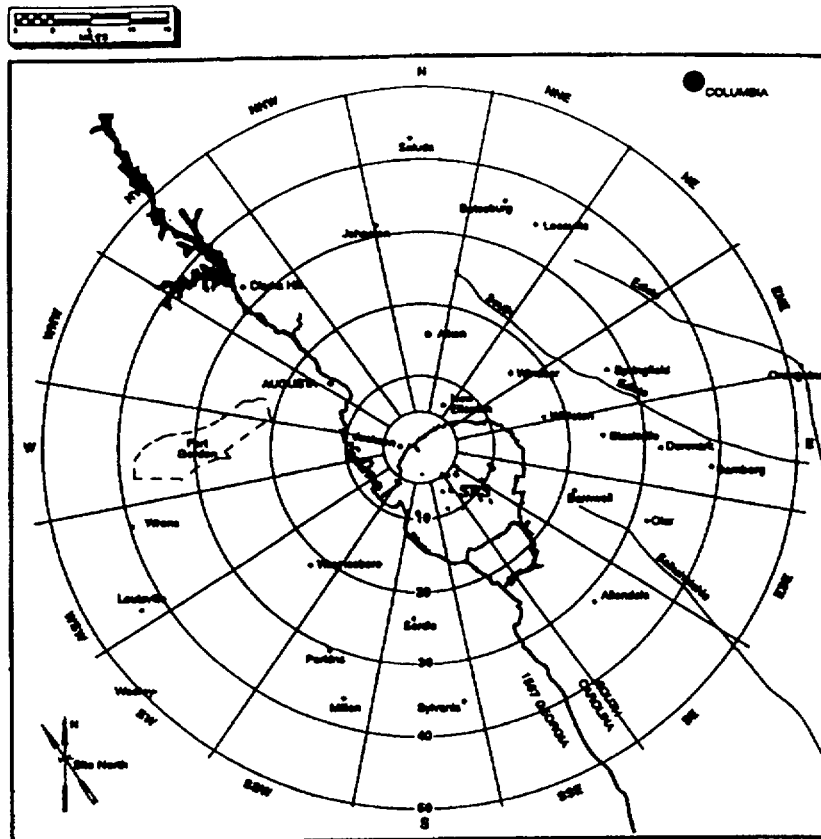
FG 043431278

Figure 1.3-29 Projected Population Distribution Within 50 Miles SRS Center, 2000



SECTOR	DISTANCE (MILES)				
	5-10	10-20	20-30	30-40	40-50
N	34	6913	13012	6585	15868
NNE	8	1715	2684	5778	18670
NE	1	3826	3804	6849	13252
ENE	35	4061	5825	6937	52986
E	201	8762	6892	11455	5632
ESE	47	2022	2510	3523	4228
SE	34	711	8459	8690	11147
SSE	52	508	999	1762	3300
S	1	724	1730	9425	4334
SSW	3	1166	2608	5435	3826
SW	22	1227	2911	3388	3457
WSW	78	1433	9240	2971	7561
W	71	4306	10316	10390	8811
WNW	584	4342	138839	65391	15010
NW	352	7665	114236	34538	3931
NNW	472	23421	35292	8663	7900

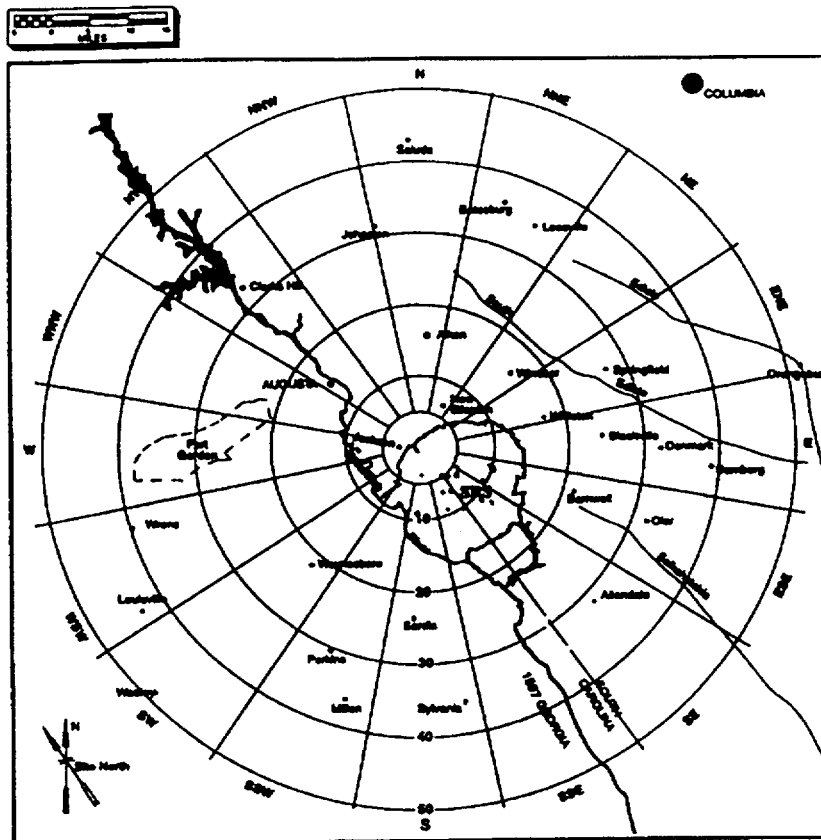
Figure 1.3-30 Projected Population Distribution Within 50 Miles SRS Center, 2010



SECTOR	DISTANCE (MILES)				
	5-10	10-20	20-30	30-40	40-50
N	39	7880	14833	7507	18090
NNE	9	1956	3059	6587	21284
NE	1	4362	4336	7808	15107
ENE	40	4630	6640	7908	60404
E	230	9989	7857	13058	8421
ESE	53	2305	2861	4016	4819
SE	39	810	9643	9907	12707
SSE	59	579	1139	2009	3762
S	1	825	1972	10744	4941
SSW	3	1329	2973	6196	4362
SW	25	1399	3319	3862	3941
WSW	89	1634	10534	3387	8620
W	81	4908	11760	11845	10045
WNW	665	4950	158276	74545	17112
NW	401	8738	130229	39374	4482
NNW	538	26700	40233	9876	9006

FG 843431298

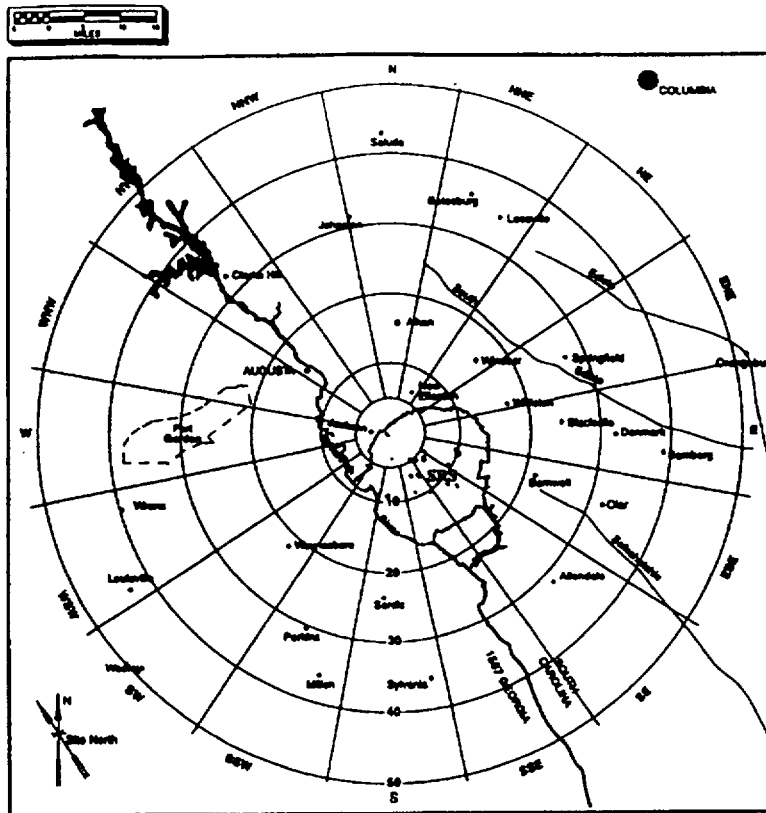
Figure 1.3-31 Projected Population Distribution Within 50 Miles SRS Center, 2020



SECTOR	DISTANCE (MILES)				
	5-10	10-20	20-30	30-40	40-50
N	44	8984	16910	8558	20622
NNE	10	2229	3488	7509	24264
NE	2	4972	4944	8901	17222
ENE	46	5278	7570	9016	68861
E	262	11387	8957	14886	7320
ESE	61	2628	3261	4579	5494
SE	44	924	10993	11294	14486
SSE	68	660	1299	2290	4288
S	2	941	2248	12248	5633
SSW	3	1515	3390	7063	4972
SW	29	1594	3783	4403	4493
WSW	101	1863	12009	3861	9826
W	93	5596	13407	13503	11451
WNW	758	5643	180435	84982	19507
NW	458	9961	148461	44886	5109
NNW	613	30438	45865	11259	10267

FG 943431308

Figure 1.3-32 Projected Population Distribution Within 50 Miles SRS Center, 2030



SECTOR	DISTANCE (MILES)				
	5-10	10-20	20-30	30-40	40-50
N	50	10241	18277	9756	23509
NNE	12	2542	3976	8560	27661
NE	2	5668	5636	10147	19633
ENE	52	6017	8630	10278	78501
E	298	12981	10210	16971	8345
ESE	69	2996	3718	5220	6263
SE	50	1053	12533	12875	16514
SSE	77	753	1481	2611	4889
S	2	1072	2563	13963	6421
SSW	4	1727	3864	8052	5668
SW	33	1818	4313	5020	5122
WSW	116	2124	13690	4401	11202
W	106	6379	15284	15394	13054
WNW	865	6433	205696	96879	22239
NW	522	11356	169246	51170	5824
NNW	699	34700	52287	12835	11705

FG 943431318

Figure 1.3-33 Projected Population Distribution Within 50 Miles SRS Center, 2040

SECTOR	DISTANCE (MILES)				
	5-10	10-20	20-30	30-40	40-50
N	2072	21439	9195	6687	104462
NNE	235	1782	2081	4100	17085
NE	8	1545	2730	5240	11442
ENE	0	3277	4657	5189	31845
E	1	4773	5086	10908	5512
ESE	8	2166	2577	2839	2891
SE	0	563	4543	6387	10432
SSE	0	364	683	1046	2507
S	0	545	1596	6730	3560
SSW	9	780	2186	4805	2591
SW	110	1171	4578	2093	2711
WSW	101	1523	4472	2586	6149
W	241	6031	10519	8946	6959
WNW	1380	5066	129791	32475	14790
NW	1102	15212	81259	9385	3296
NNW	1171	19728	11205	6884	3344

Age-group distribution for population more than 10 mi. Away: 51 % adults, 10.9% teenagers, 37.8% children

Figure 1.3-34 Total Population Within 50 Miles of F Area, 1990

SECTOR	DISTANCE (MILES)				
	5-10	10-20	20-30	30-40	40-50
N	2362	24440	10482	7623	11927
NNE	268	2031	2372	4674	19477
NE	9	1761	3112	5974	13044
ENE	0	3736	5309	5915	36303
E	1	5441	5798	12435	6284
ESE	9	2469	2938	3236	3296
SE	0	642	5179	7281	11892
SSE	0	415	779	1192	2858
S	0	621	1819	7672	4058
SSW	10	889	2492	5478	2954
SW	125	1335	5219	2386	3091
WSW	115	1736	5098	2948	7010
W	275	6875	11992	10198	7933
WNW	1573	5775	147962	37022	16861
NW	1256	17342	92635	10699	3757
NNW	1335	22490	12774	7848	3812

Figure 1.3-35 Projected Population Distribution Within 50 Miles of F Area, 2000

SECTOR	DISTANCE (MILES)				
	5-10	10-20	20-30	30-40	40-50
N	2693	27862	11950	8690	13596
NNE	305	2316	2704	5328	22204
NE	10	2008	3548	6810	14870
ENE	0	4259	6052	6744	41386
E	1	6203	6610	14176	7163
ESE	10	2815	3349	3690	3757
SE	0	732	5904	8301	13557
SSE	0	473	888	1359	3258
S	0	708	2074	8746	4627
SSW	12	1014	2841	6245	3367
SW	143	1522	5950	2720	3523
WSW	131	1979	5812	3361	7991
W	313	7838	13670	11626	9044
WNW	1793	6584	168676	42205	19221
NW	1432	19770	105604	12197	4283
NNW	1522	25639	14562	8946	4346

Figure 1.3-36 Projected Population Distribution Within 50 Miles of F Area, 2010

SECTOR	DISTANCE (MILES)				
	5-10	10-20	20-30	30-40	40-50
N	3070	31763	13623	9907	15500
NNE	348	3640	3083	6074	25312
NE	12	2289	4045	7763	16952
ENE	0	4855	6900	7688	47180
E	1	7071	7535	16161	8166
ESE	12	3209	3818	4206	4283
SE	0	834	6731	9463	15455
SSE	0	539	1012	1550	3714
S	0	807	2365	9971	5274
SSW	13	1156	3239	7119	3839
SW	163	1735	6783	3101	4016
WSW	150	2256	6625	3831	9110
W	357	8935	15584	13254	10310
WNW	2045	7506	192291	48113	21912
NW	1633	22537	120389	13904	4883
NNW	1735	29228	16601	10199	4954

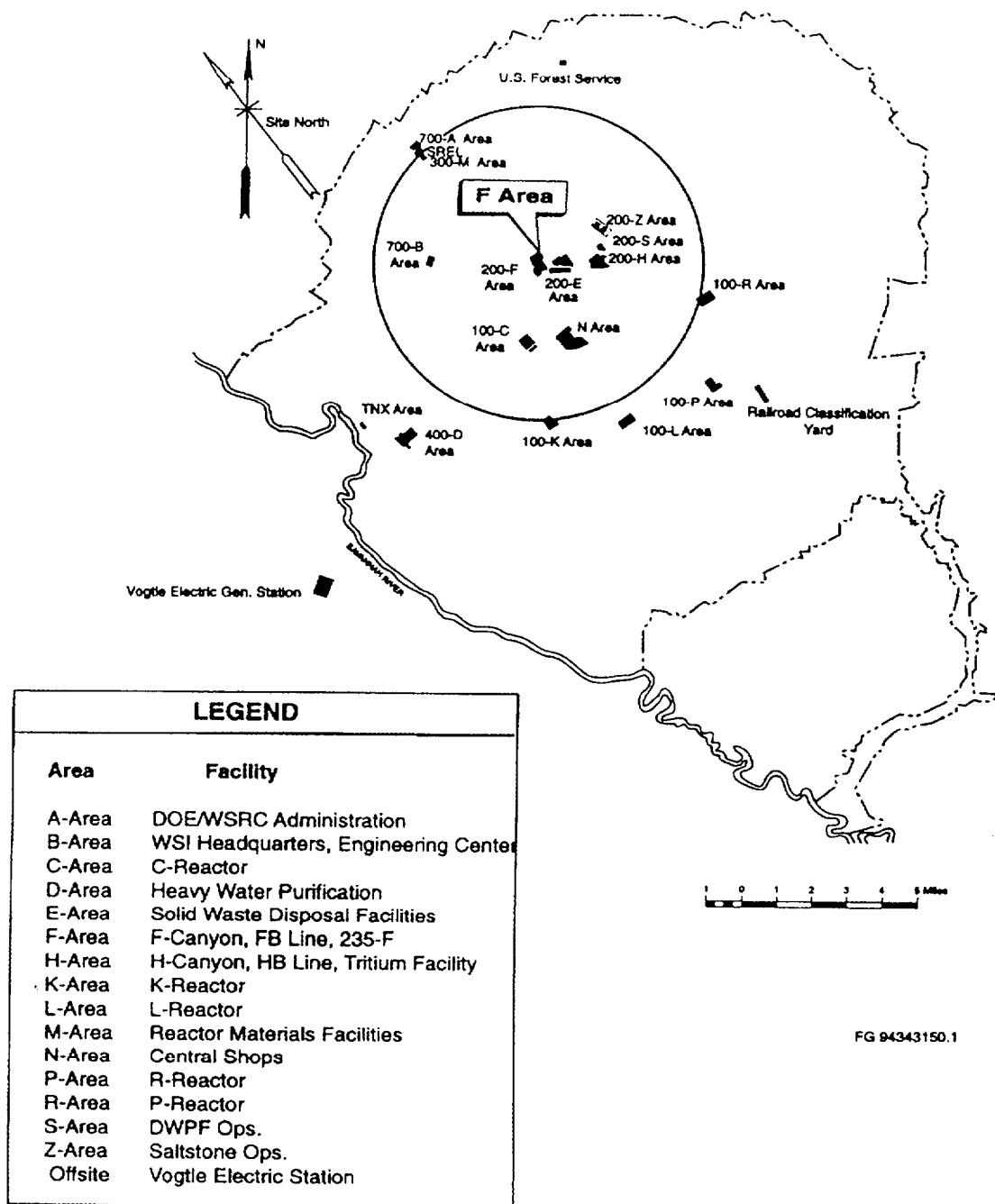
Figure 1.3-37 Projected Population Distribution Within 50 Miles of F Area, 2020

SECTOR	DISTANCE (MILES)				
	5-10	10-20	20-30	30-40	40-50
N	3500	36210	15530	11294	17670
NNE	397	3010	3515	6925	28856
NE	14	2609	4611	8850	19325
ENE	0	5535	7865	8764	53785
E	2	8061	8590	18423	9310
ESE	14	3658	4352	5466	488
SE	0	951	7673	7409	17619
SSE	0	615	1154	1767	4234
S	0	920	2696	11367	6013
SSW	15	1317	3692	8115	4376
SW	186	1978	7732	3535	4579
WSW	171	2572	7553	4368	10385
W	407	10186	17766	15109	11753
WNW	2331	8556	219212	54849	24980
NW	1861	25692	137243	15851	5567
NNW	1978	33320	18925	11627	5648

Figure 1.3-38 Projected Population Distribution Within 50 Miles of F Area, 2030

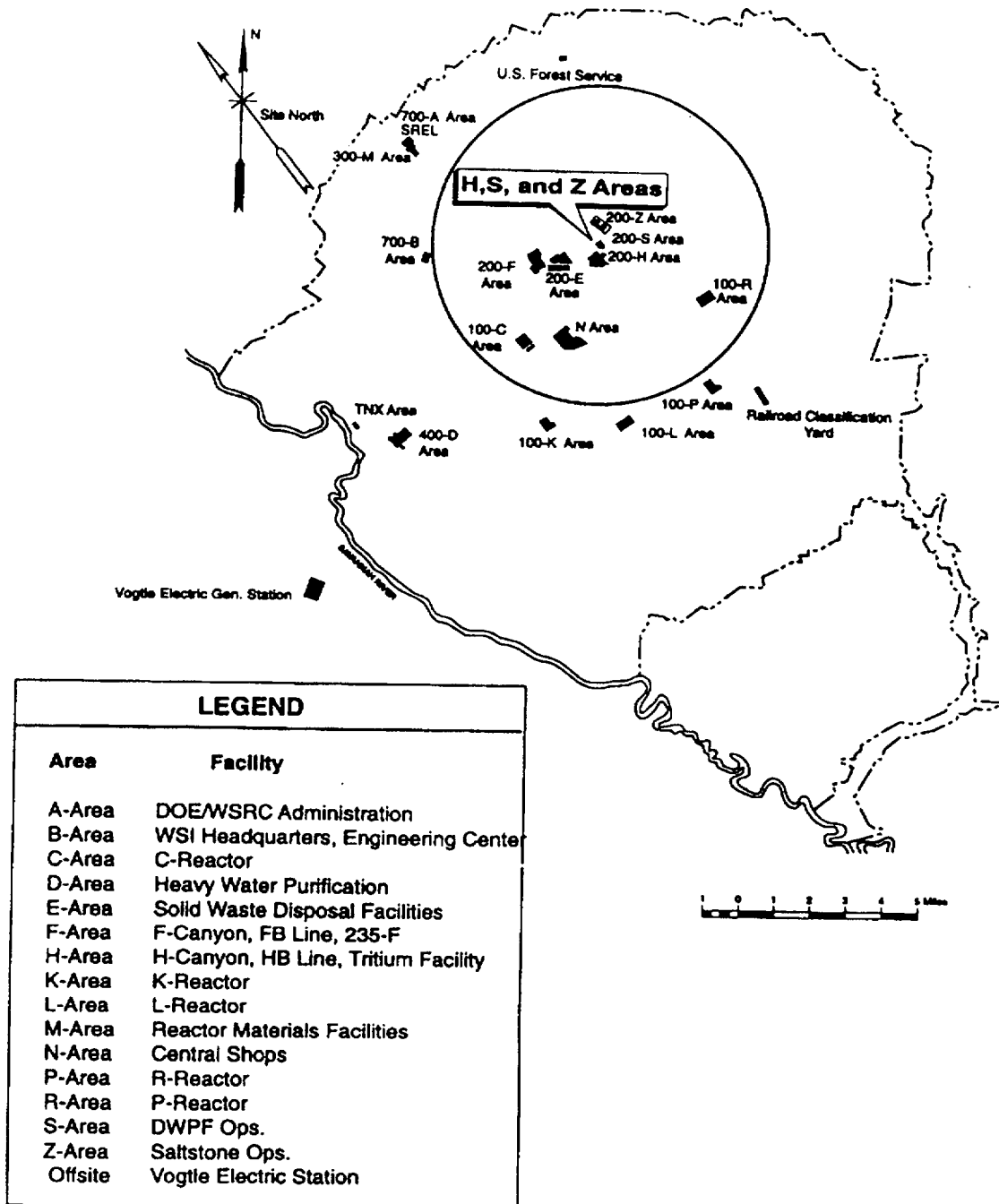
SECTOR	DISTANCE (MILES)				
	0-1	1-2	2-3	3-4	4-5.
N	0	0	0	0	0
NNE	0	0	0	0	0
NE	0	0	0	0	0
ENE	0	0	0	0	0
E	0	0	0	0	0
ESE	0	0	0	0	0
SE	0	0	0	0	0
SSE	0	0	0	0	1
S	0	0	0	4	17
SSW	0	0	3	13	28
SW	0	4	9	21	29
WSW	0	7	16	22	29
W	0	5	12	17	29
WNW	0	4	6	3	10
NW	0	0	1	0	7
NNW	0	0	0	0	2

Figure 1.3-39 Projected Population Distribution Within 50 Miles of F Area, 2040



(Note: Figures 1.3-40 through 1.3-51 are intentionally omitted).

Figure 1.3-52 SRS Areas Within a 5-Mile Vicinity of F Area

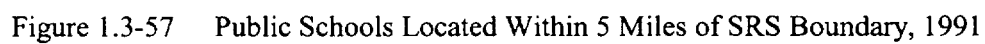


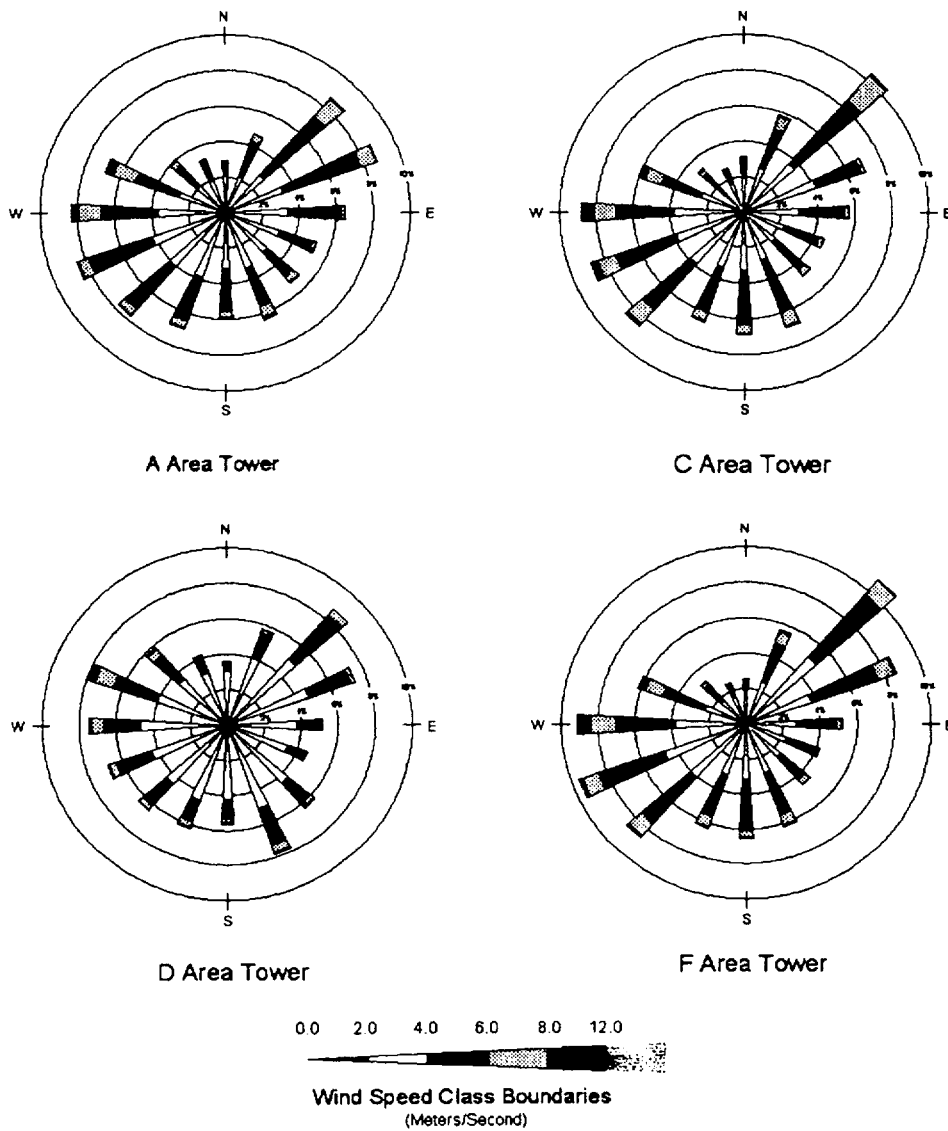
FG 94343151.1

Figure 1.3-53 SRS Areas Within a 5-Mile Vicinity of H, S, and Z Areas



Figure 1.3-56 1993 Day Shift Population Distribution Within 10 Miles of SRS Center

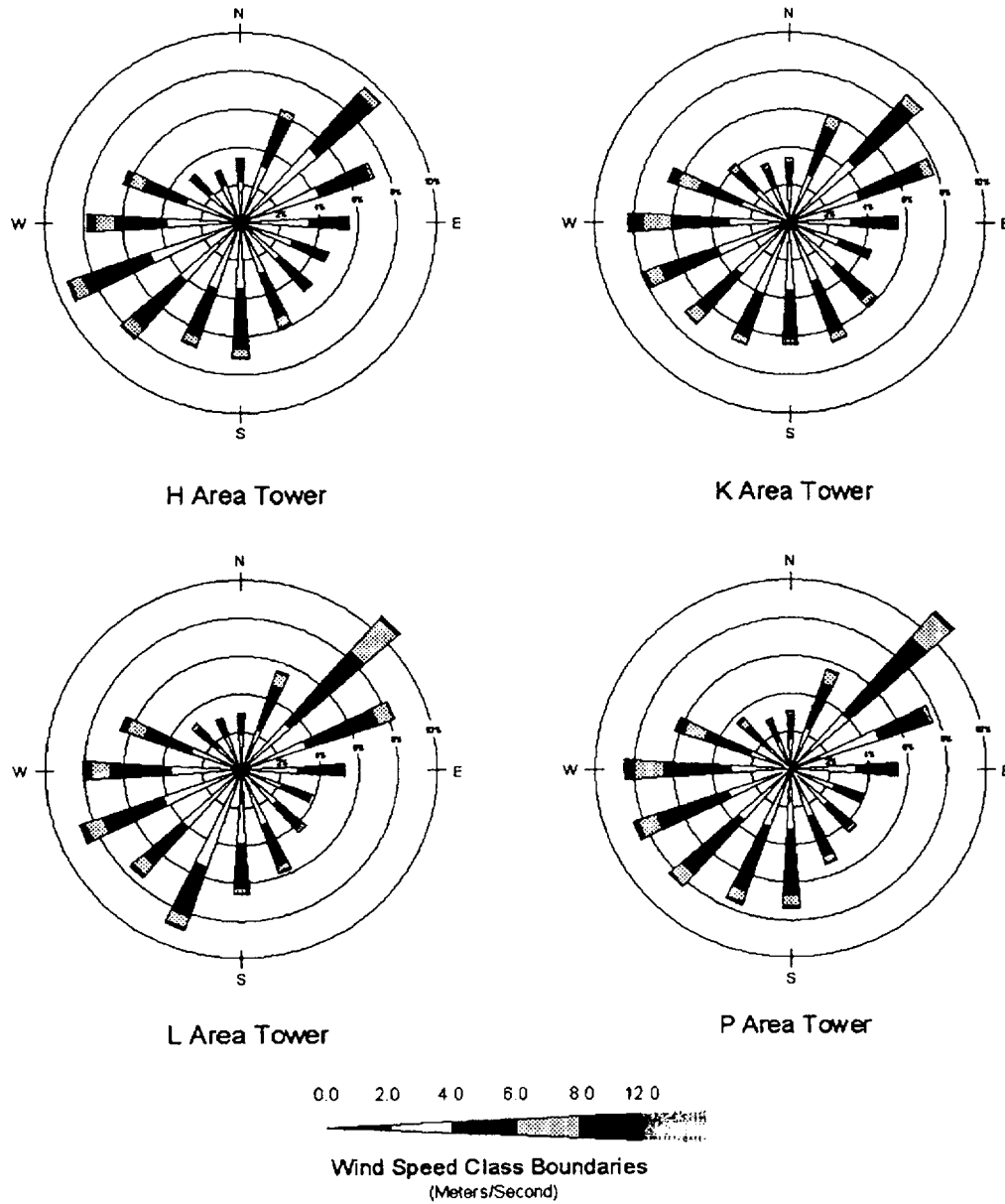




Note: Plots indicate the wind direction sector from which the wind blows

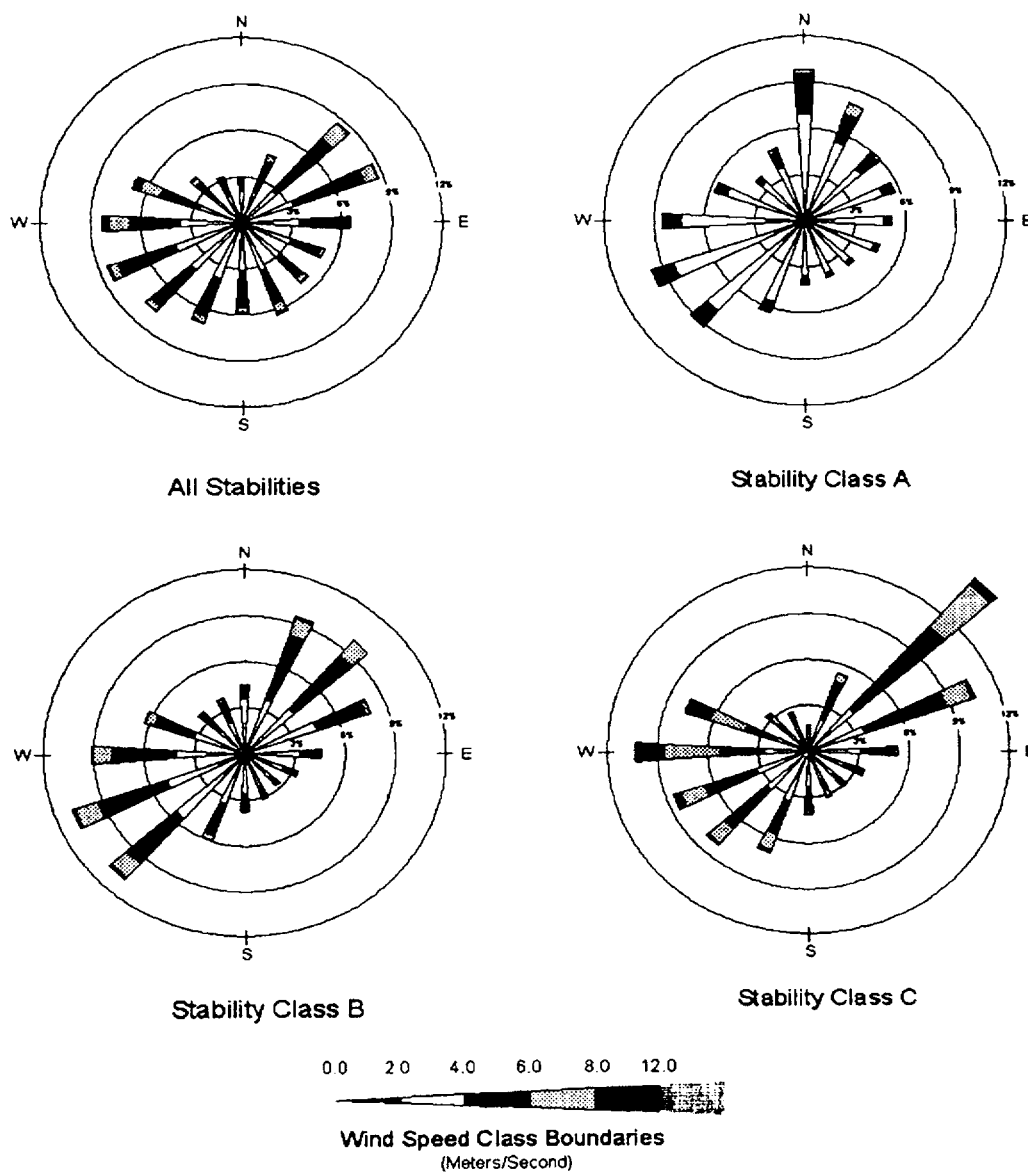
Figure 1.4-1

Wind Rose Plots for A, C, D, F, H, K, L, and
P Areas, 1992-1996 (Sheet 1 of 2)



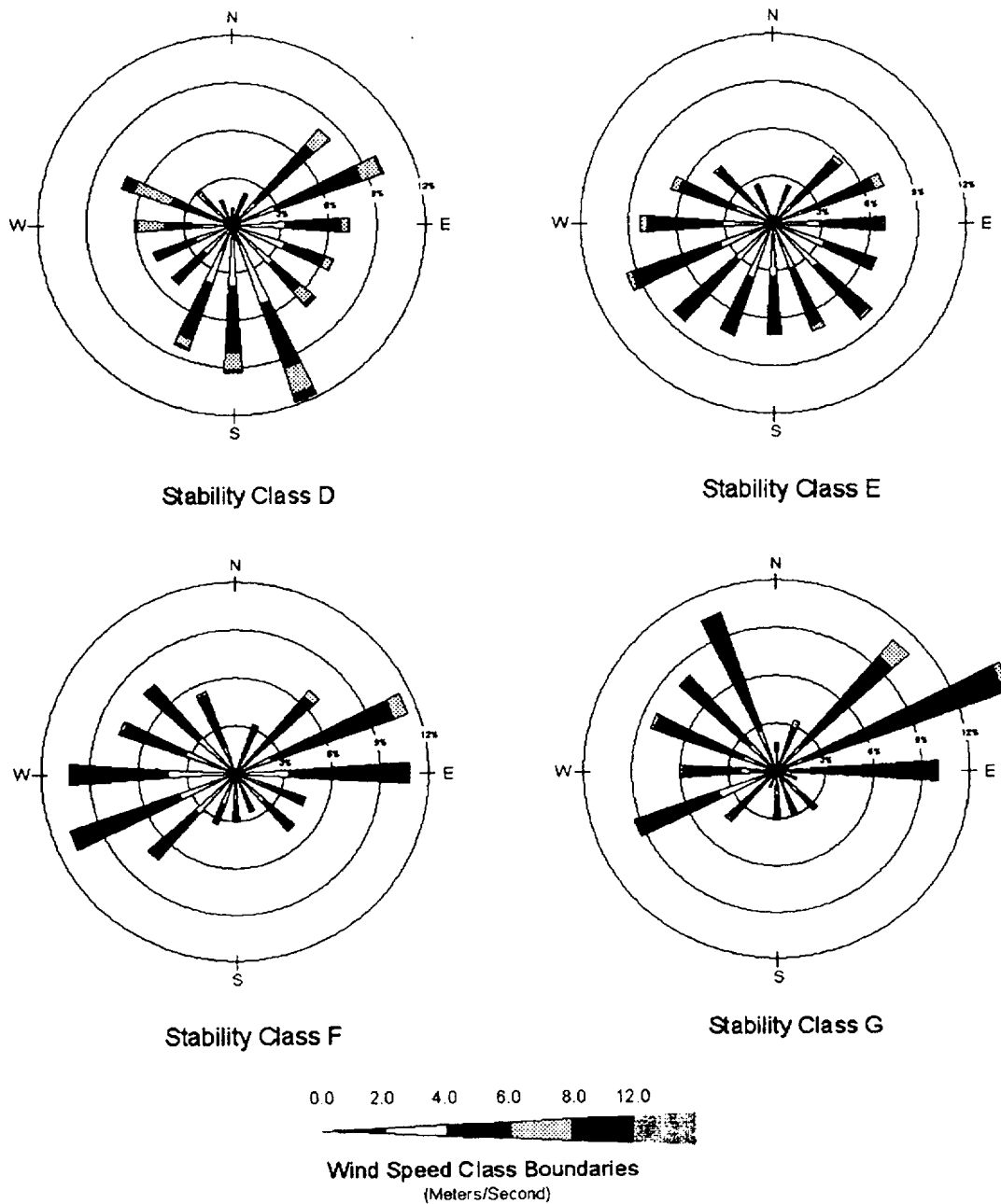
Note: Plots indicate the wind direction sector from which the wind blows

Figure 1.4-1 Wind Rose Plots for A, C, D, F, H, K, L, and P Areas, 1992-1996 (Sheet 2 of 2)



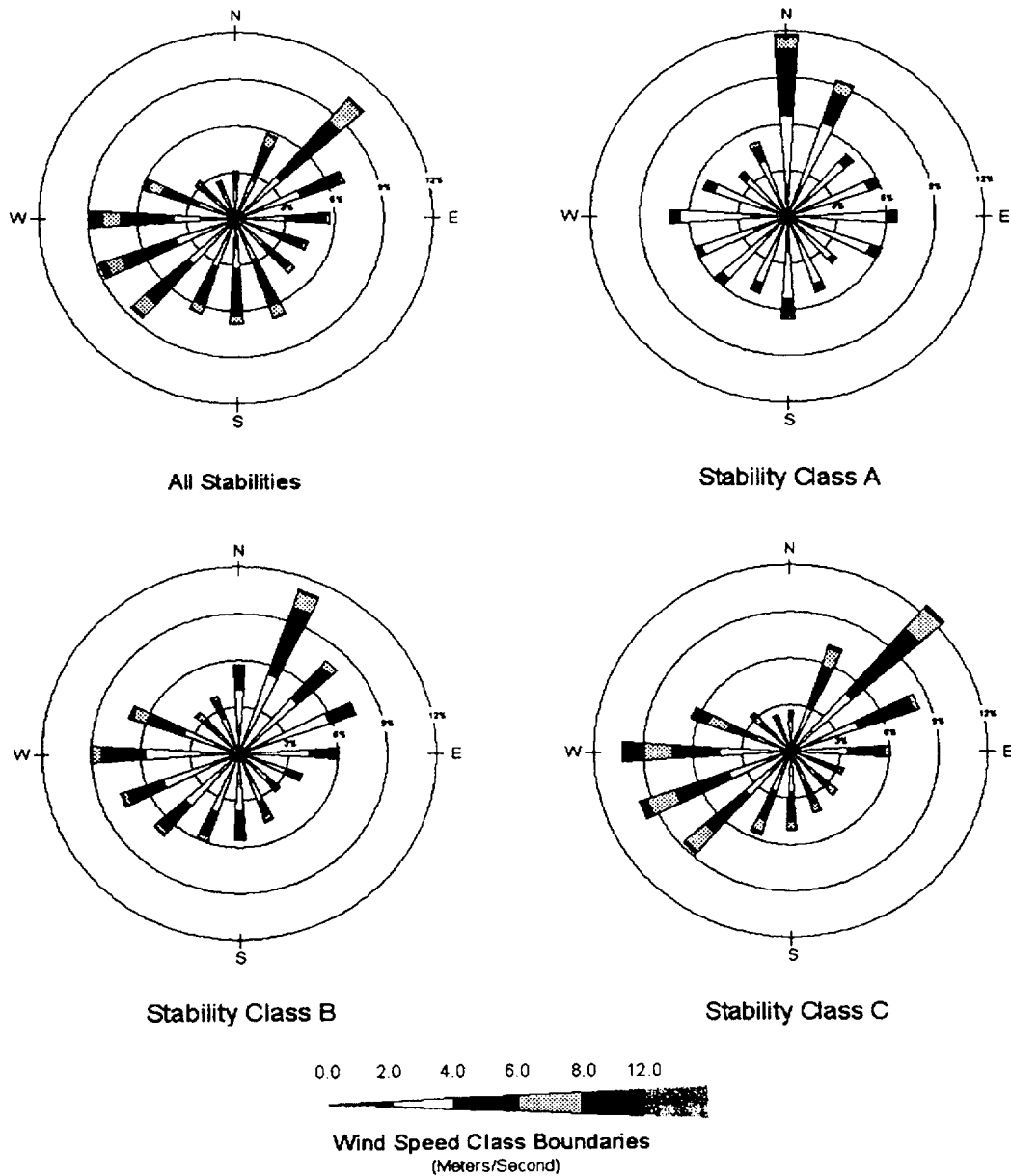
Note: plots indicate the wind direction sector from which the wind blows

Figure 1.4-2 Wind Rose Plots by Stability Class - A Area Tower, 1992-1996 (Sheet 1 of 2)



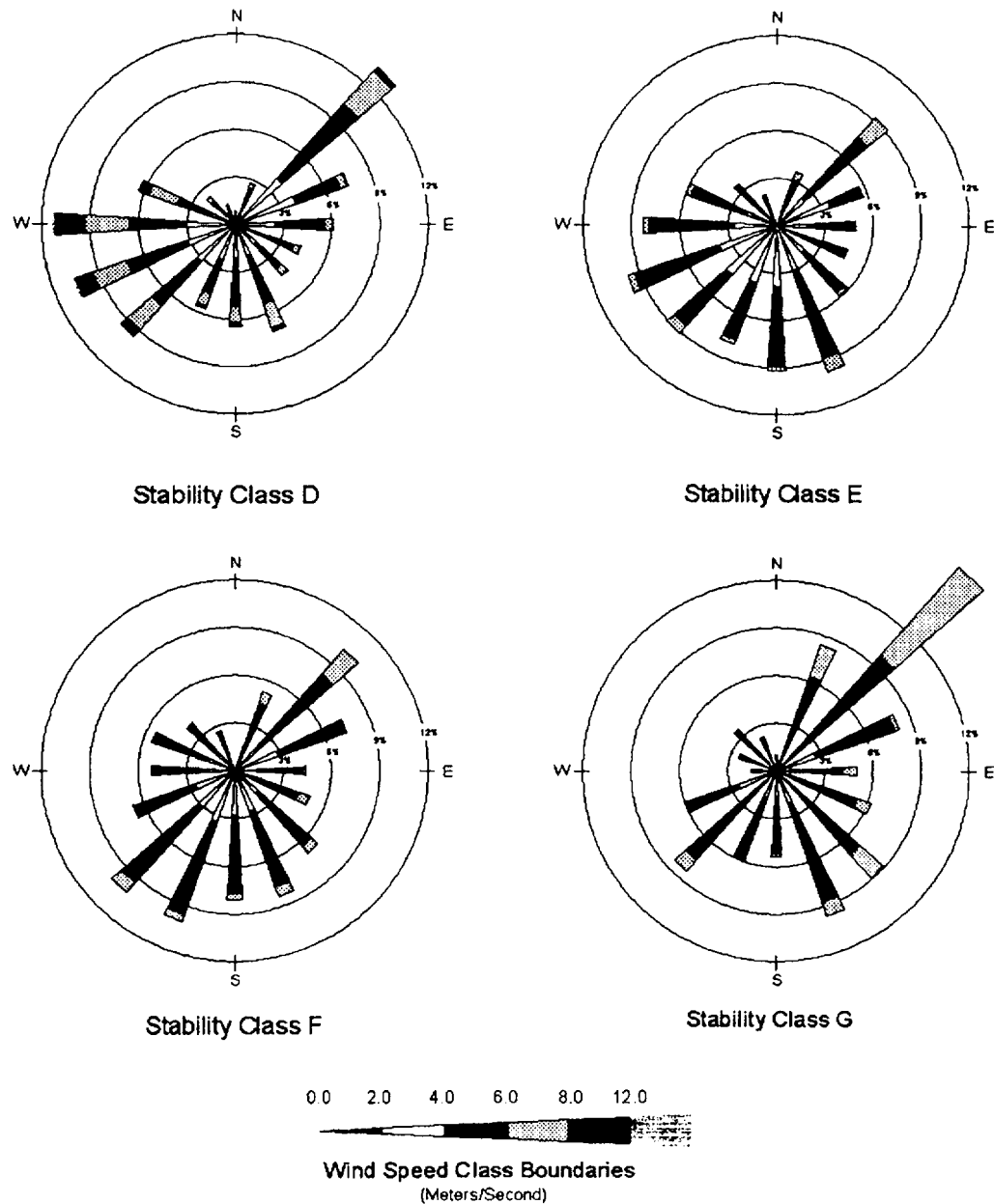
Note: plots indicate the wind direction sector from which the wind blows

Figure 1.4-2 Wind Rose Plots by Stability Class - A Area Tower, 1992-1996 (Sheet 2 of 2)



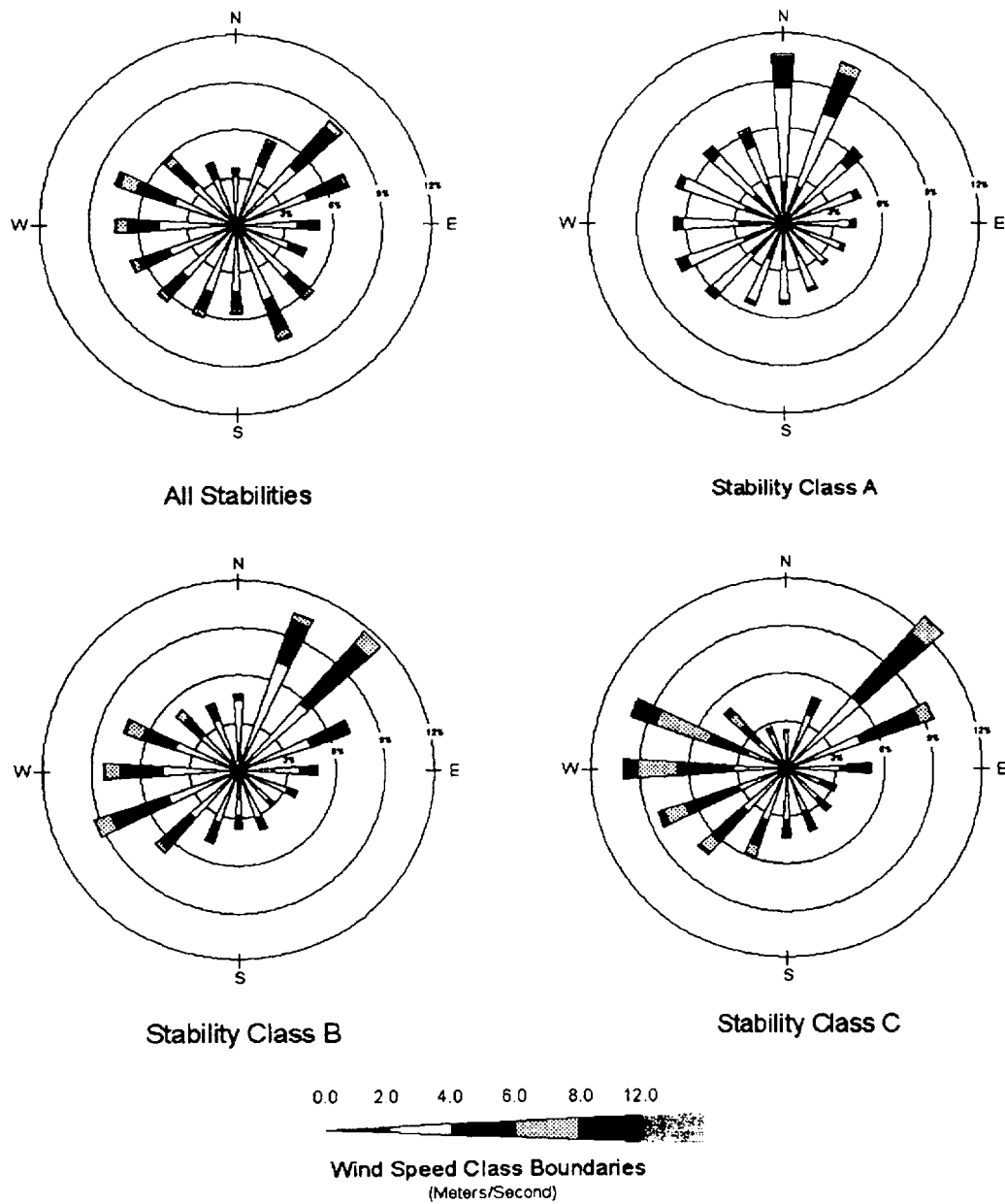
Note: plots indicate the wind direction sector from which the wind blows

Figure 1.4-3 Wind Rose Plots by Stability Class - C Area Tower, 1992-1996 (Sheet 1 of 2)



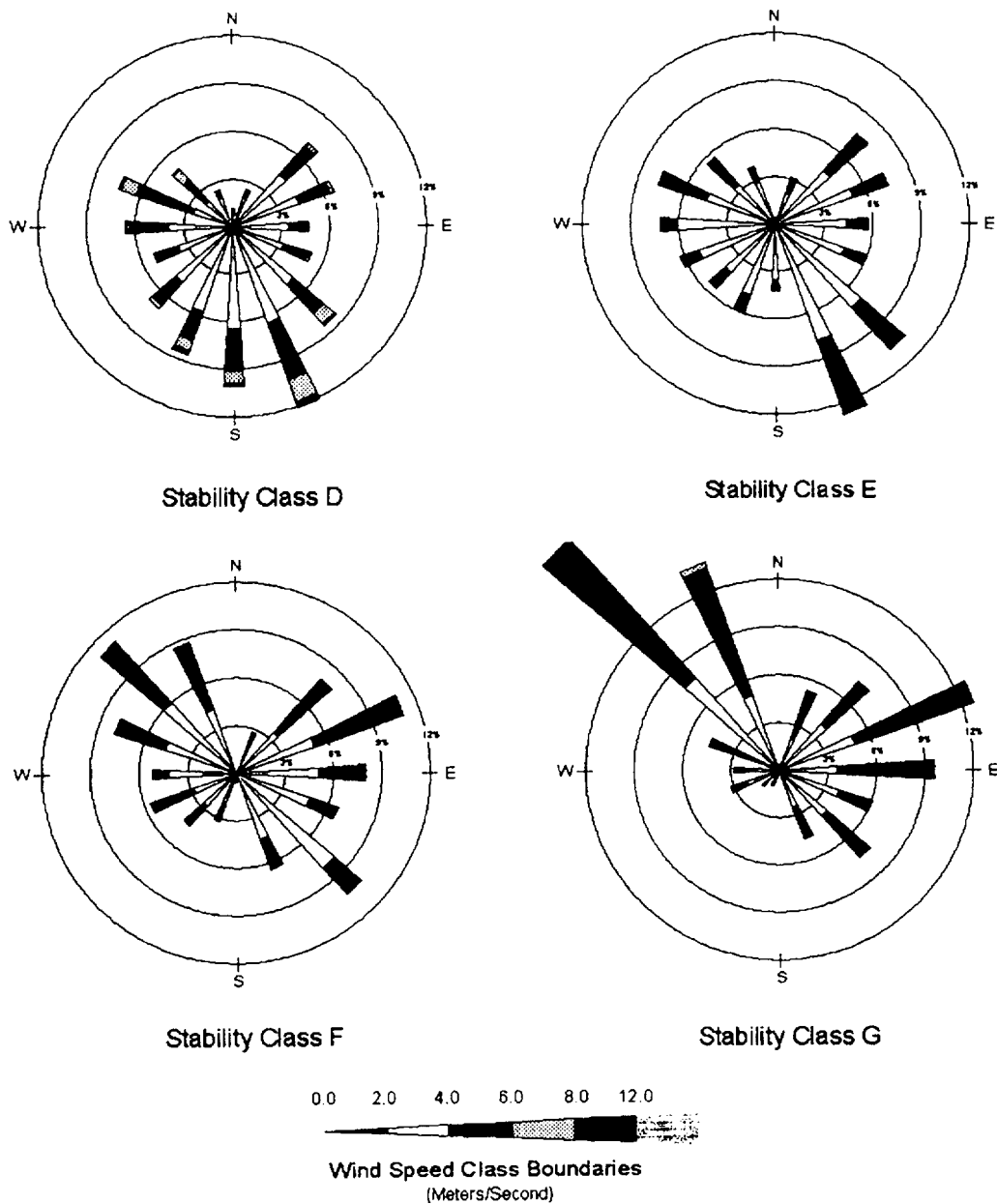
Note: plots indicate the wind direction sector from which the wind blows

Figure 1.4-3 Wind Rose Plots by Stability Class - C Area Tower, 1992-1996 (Sheet 2 of 2)



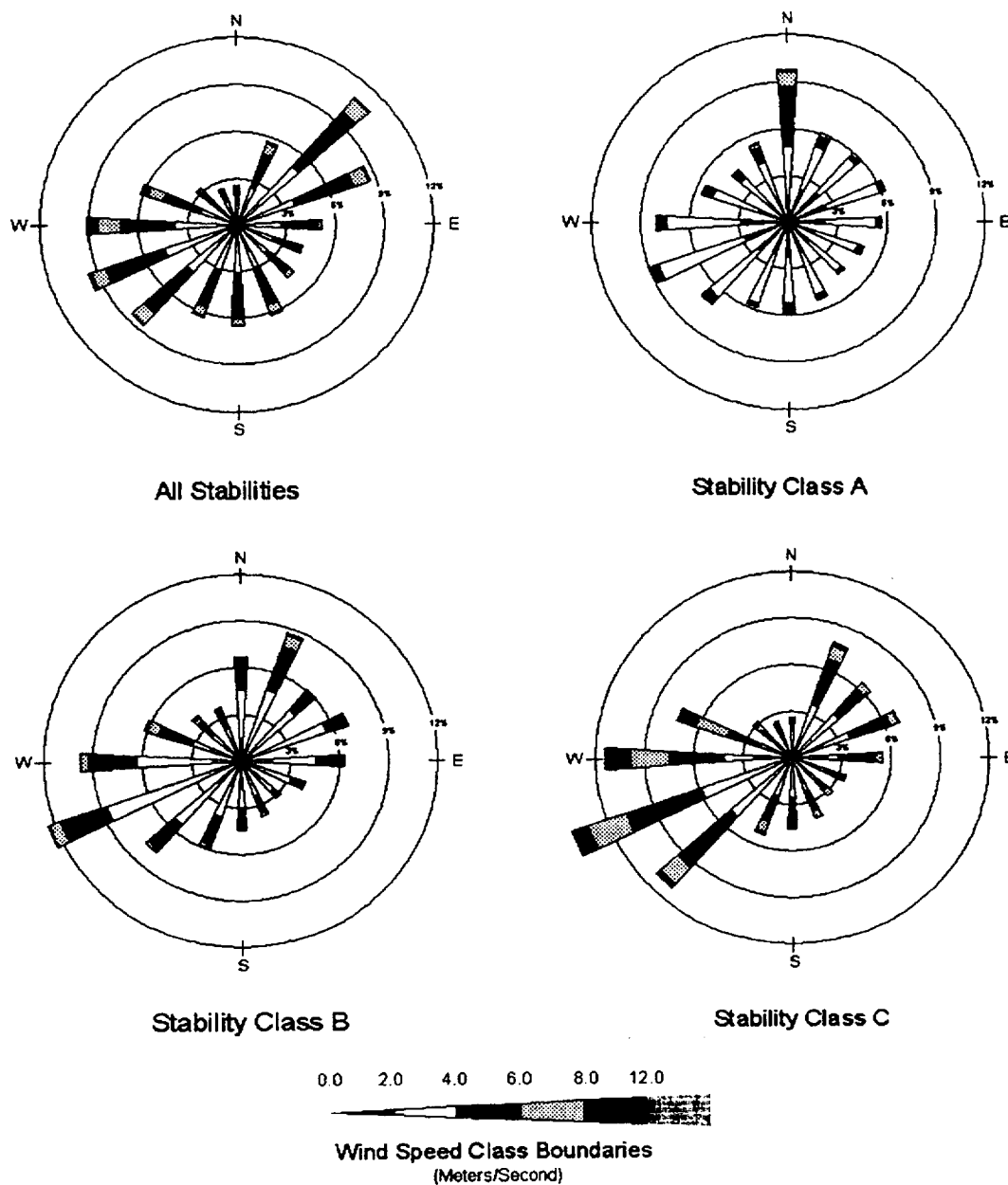
Note: plots indicate the wind direction sector from which the wind blows

Figure 1.4-4 Wind Rose Plots by Stability Class - D Area Tower, 1992-1996 (Sheet 1 of 2)



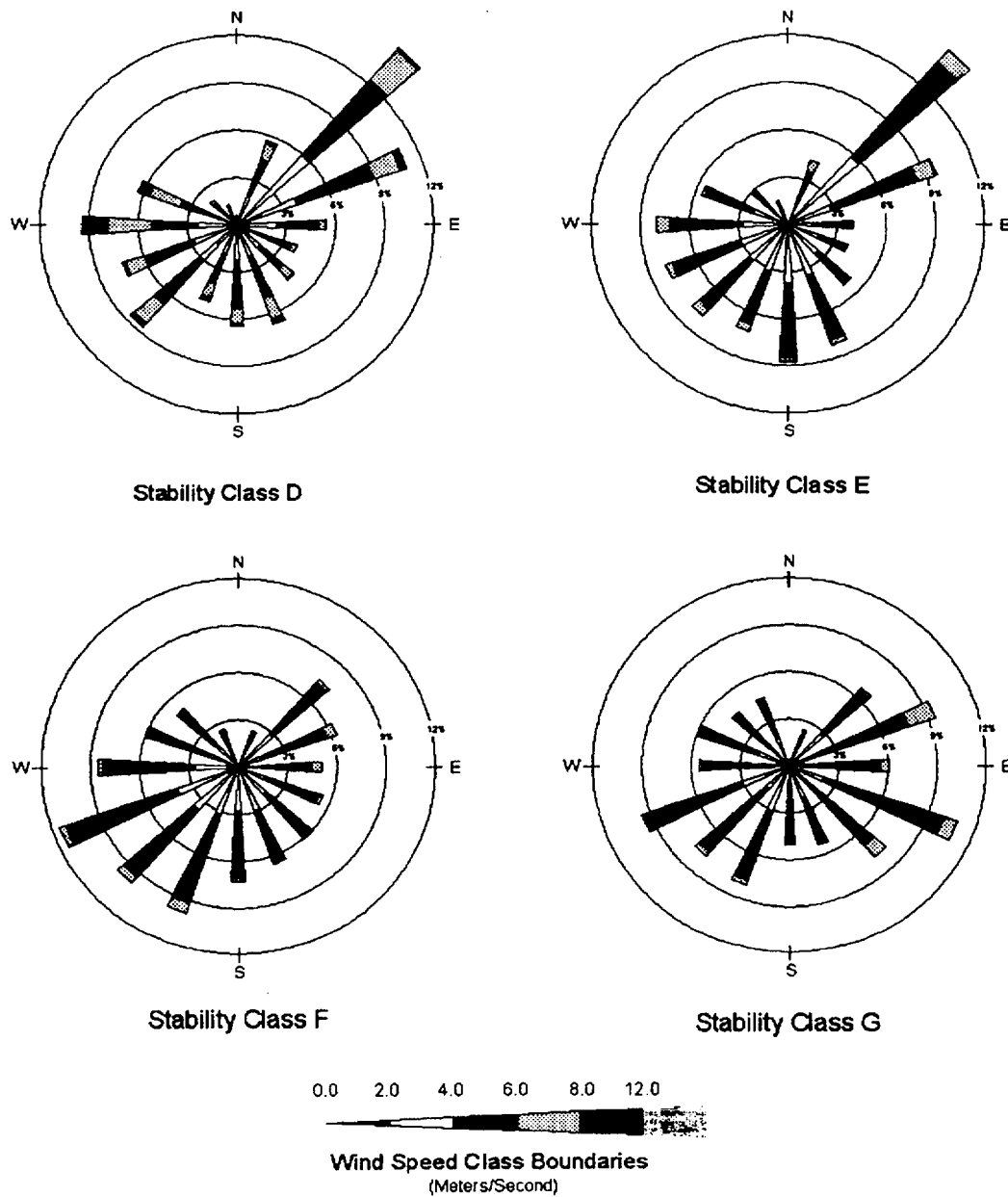
Note: plots indicate the wind direction sector from which the wind blows

Figure 1.4-4 Wind Rose Plots by Stability Class - D Area Tower, 1992-1996 (Sheet 2 of 2)



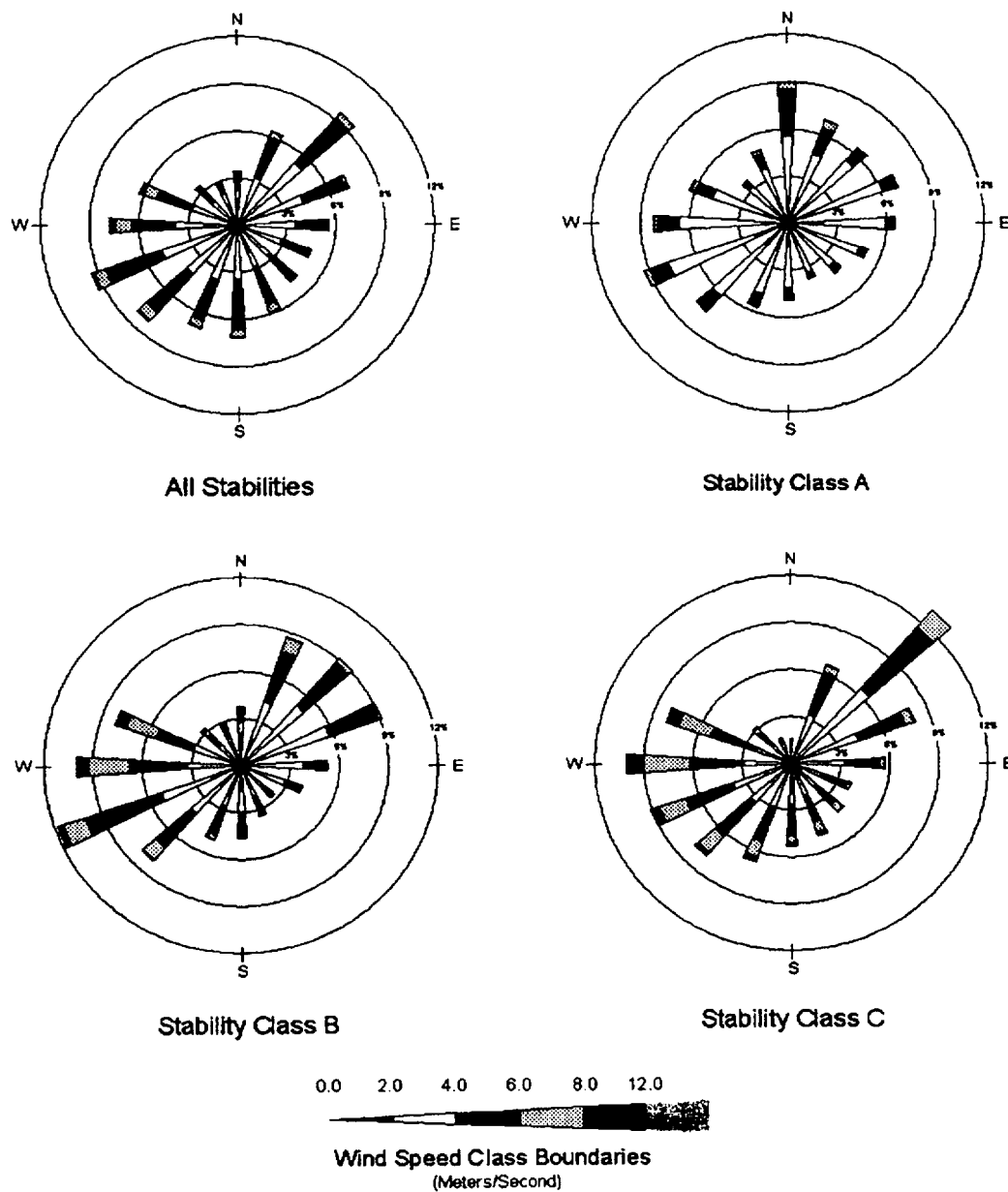
Note: plots indicate the wind direction sector from which the wind blows

Figure 1.4-5 Wind Rose Plots by Stability Class - F Area Tower, 1992-1996 (Sheet 1 of 2)



Note: plots indicate the wind direction sector from which the wind blows

Figure 1.4-5 Wind Rose Plots by Stability Class - F Area Tower, 1992-1996 (Sheet 2 of 2)



Note: plots indicate the wind direction sector from which the wind blows

Figure 1.4-6 Wind Rose Plots by Stability Class - H Area Tower, 1992-1996 (Sheet 1 of 2)

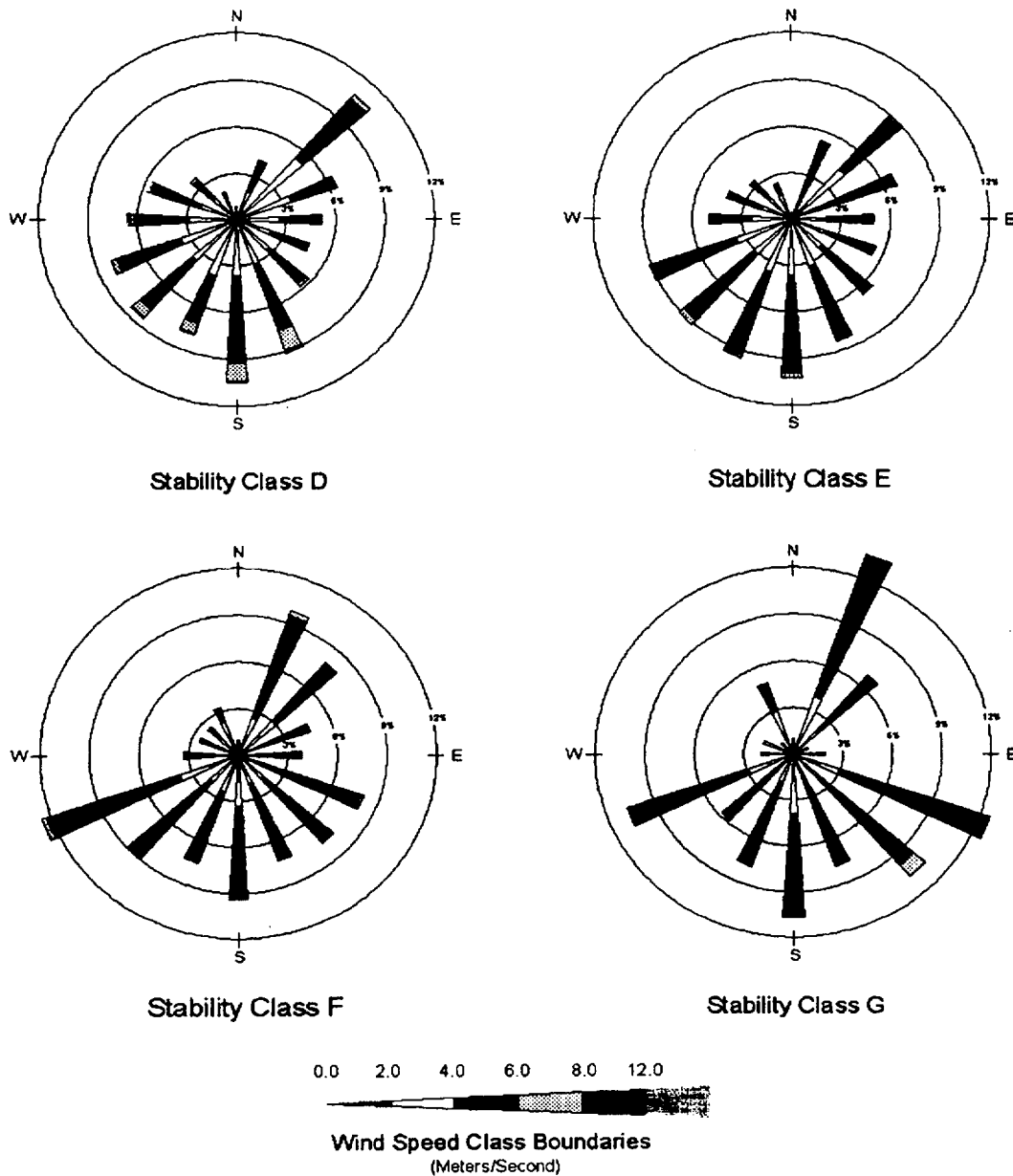
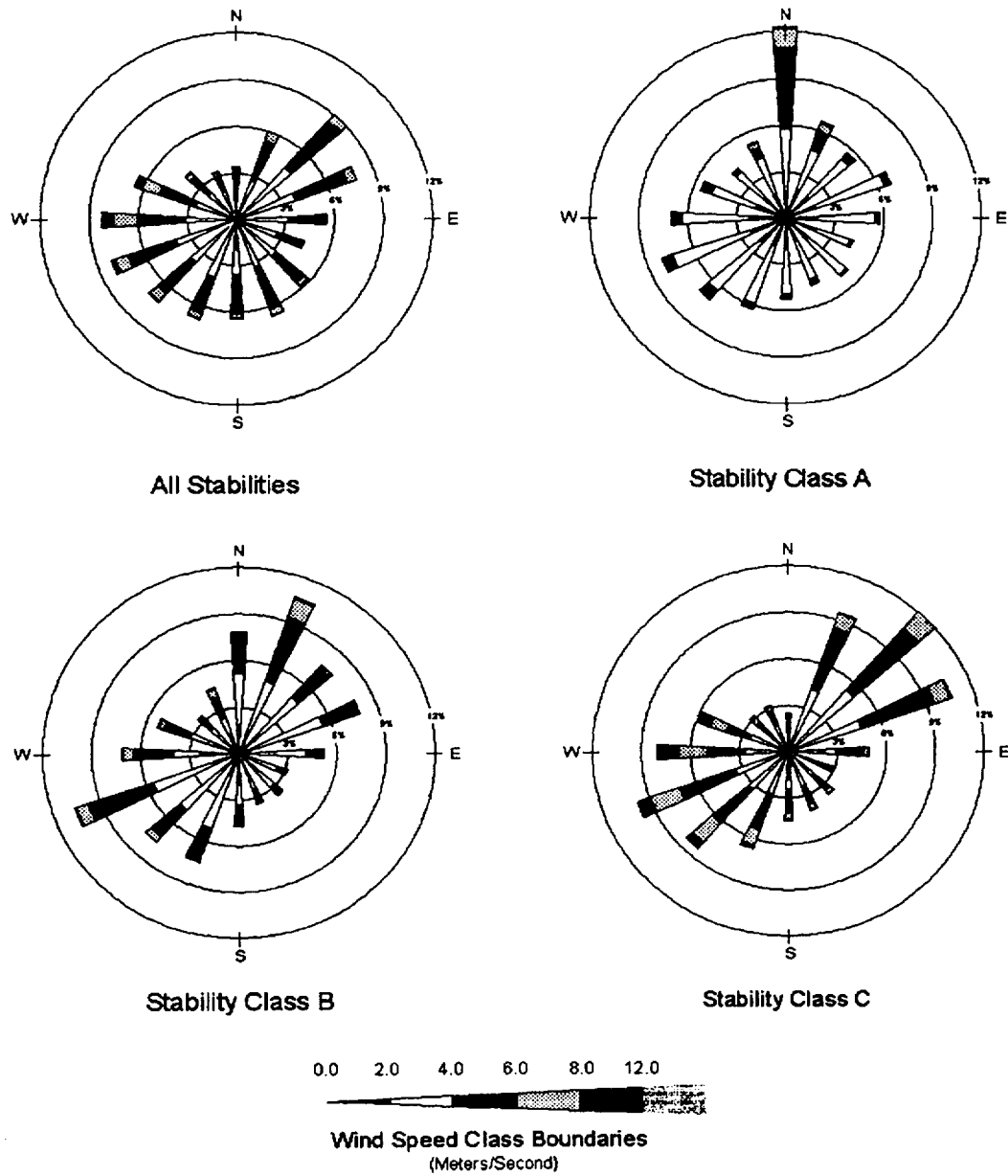
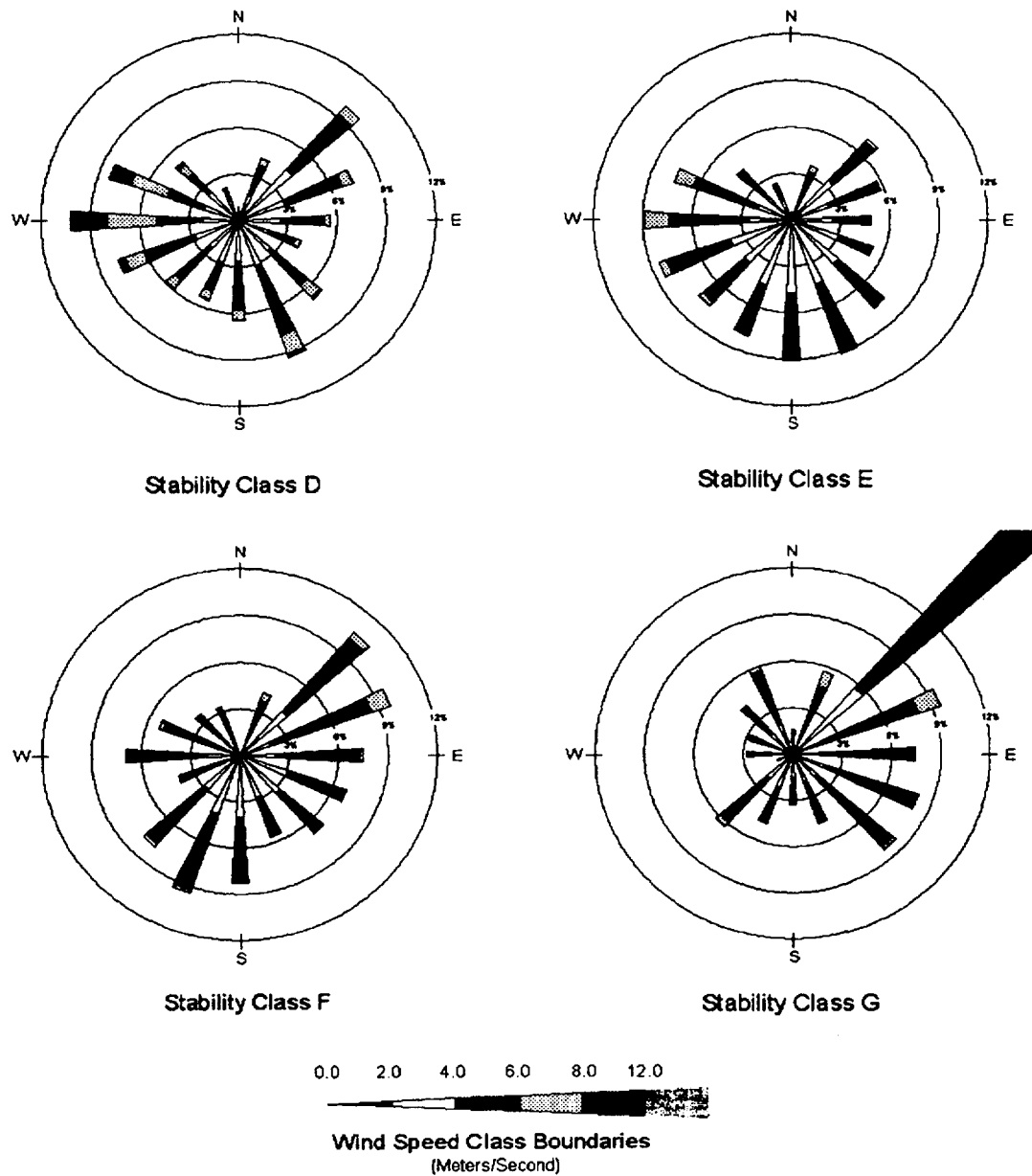


Figure 1.4-6 Wind Rose Plots by Stability Class - H Area Tower, 1992-1996 (Sheet 2 of 2)



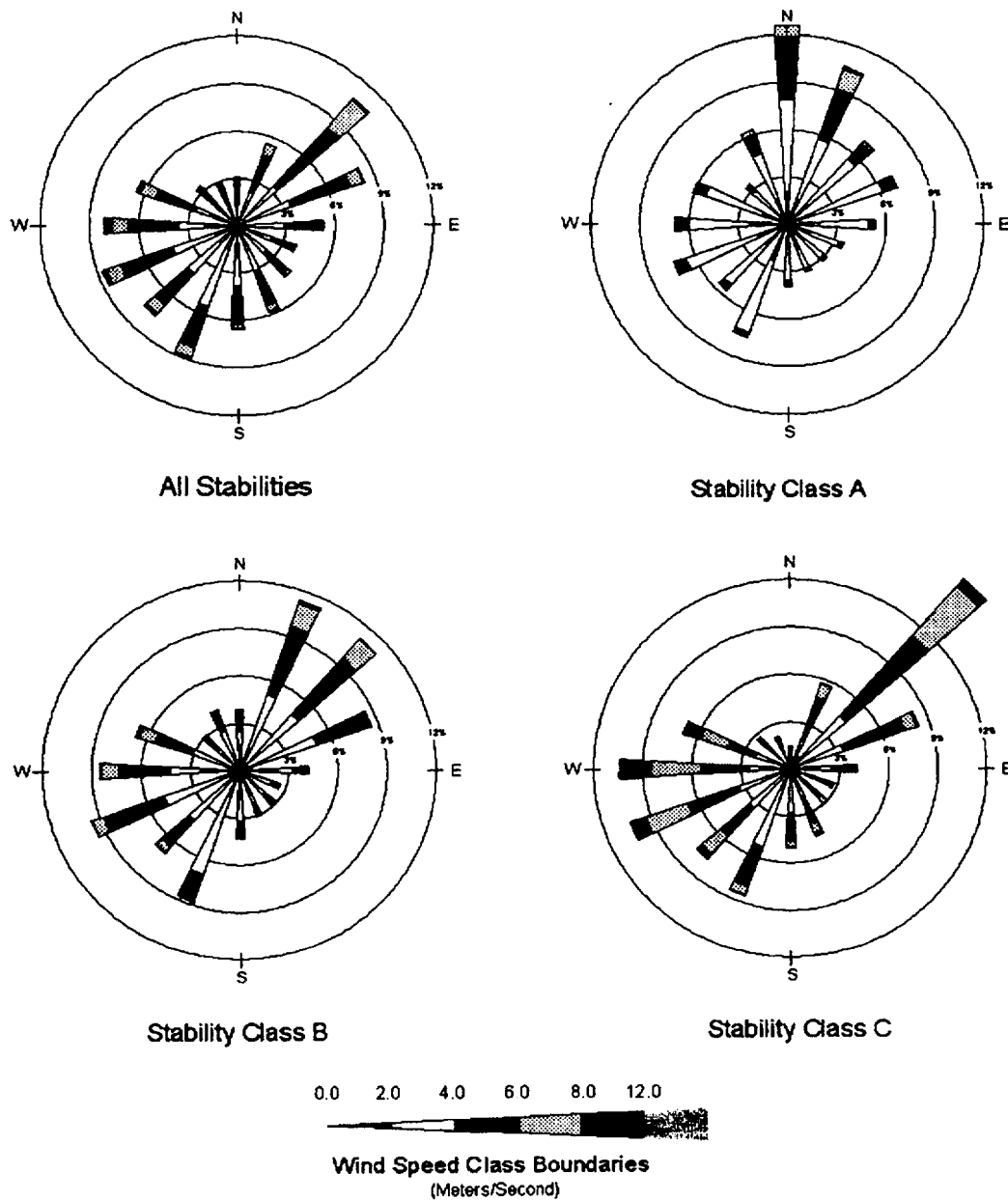
Note: plots indicate the wind direction sector from which the wind blows

Figure 1.4-7 Wind Rose Plots by Stability Class - K Area Tower, 1992-1996 (Sheet 1 of 2)



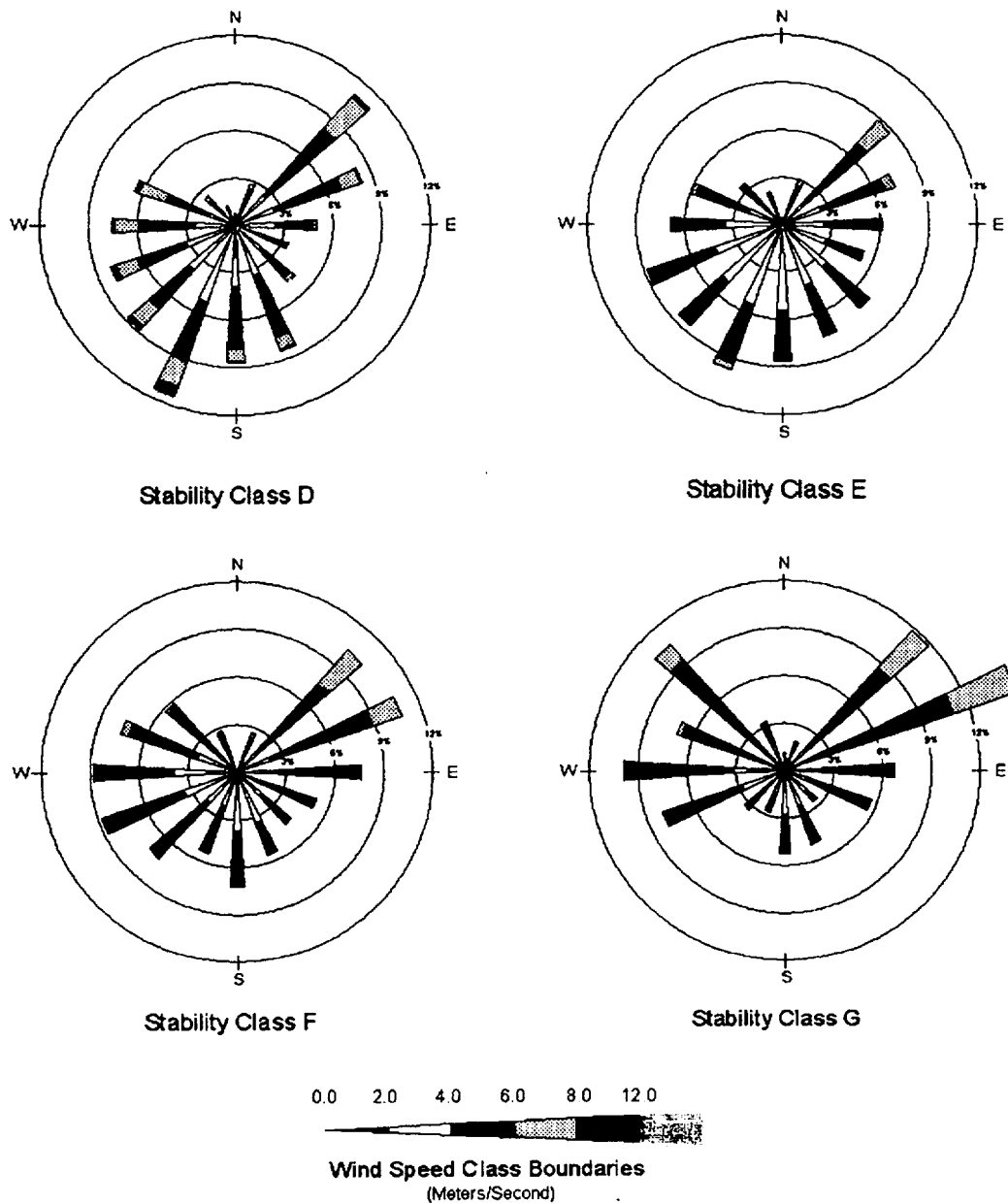
Note: plots indicate the wind direction sector from which the wind blows

Figure 1.4-7 Wind Rose Plots by Stability Class - K Area Tower, 1992-1996 (Sheet 2 of 2)



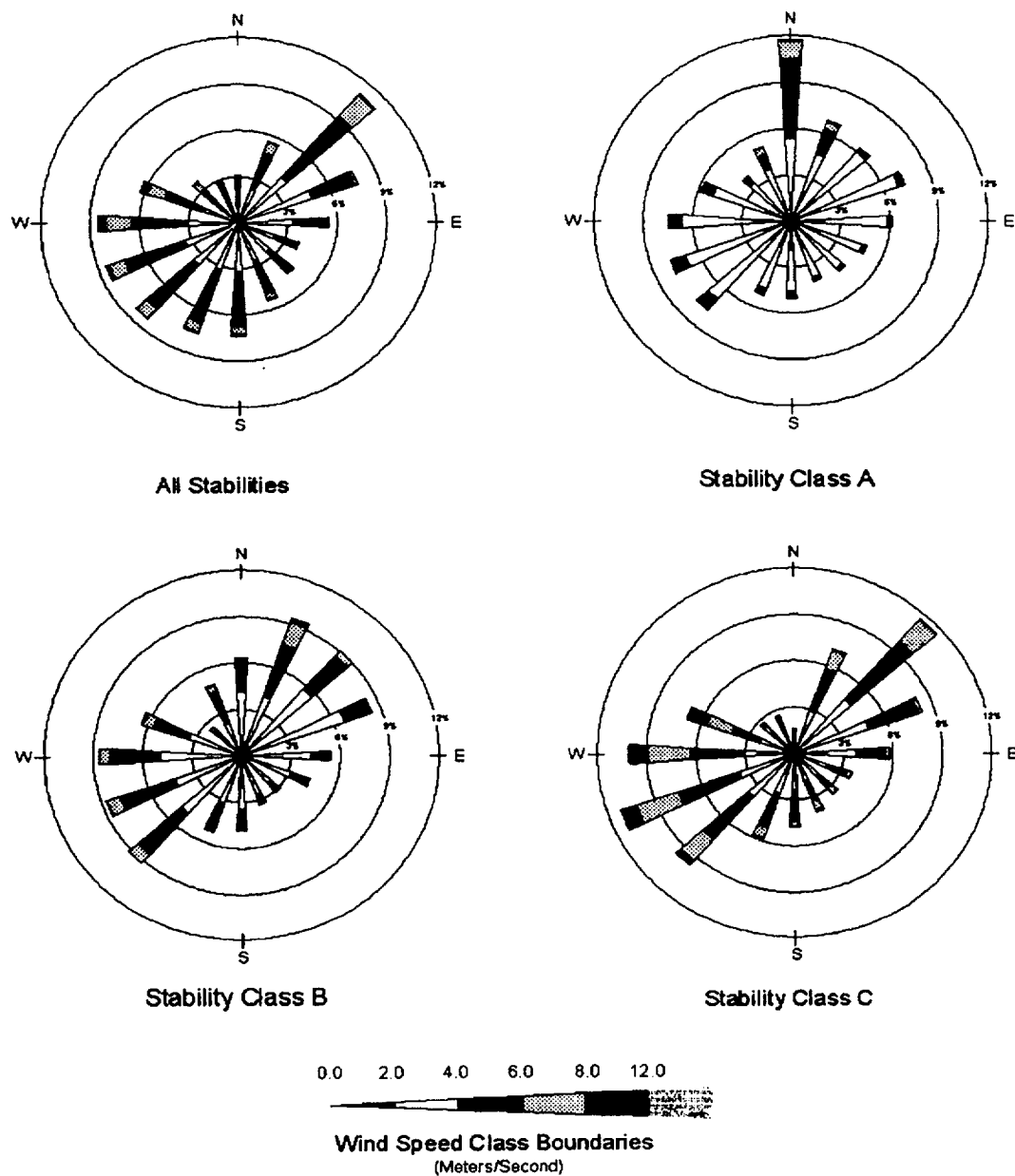
Note: plots indicate the wind direction sector from which the wind blows

Figure 1.4-8 Wind Rose Plots by Stability Class - L Area, 1992-1996 (Sheet 1 of 2)



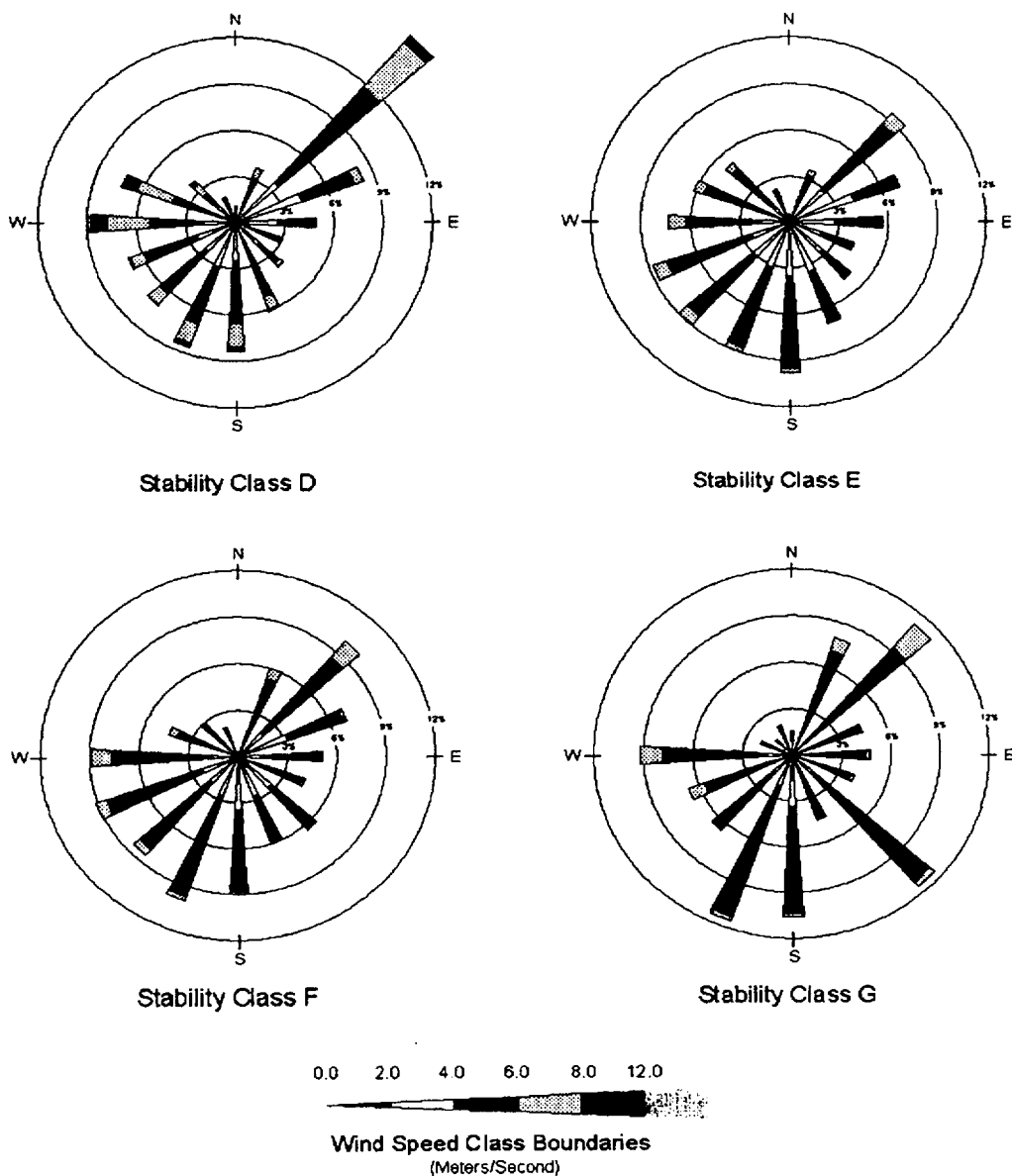
Note: plots indicate the wind direction sector from which the wind blows

Figure 1.4-8 Wind Rose Plots by Stability Class - L Area, 1992-1996 (Sheet 2 of 2)



Note: plots indicate the wind direction sector from which the wind blows

Figure 1.4-9 Wind Rose Plots by Stability Class- P Area, 1992-1996 (Sheet 1 of 2)



Note: plots indicate the wind direction sector from which the wind blows

Figure 1.4-9 Wind Rose Plots by Stability Class- P Area, 1992-1996 (Sheet 2 of 2)

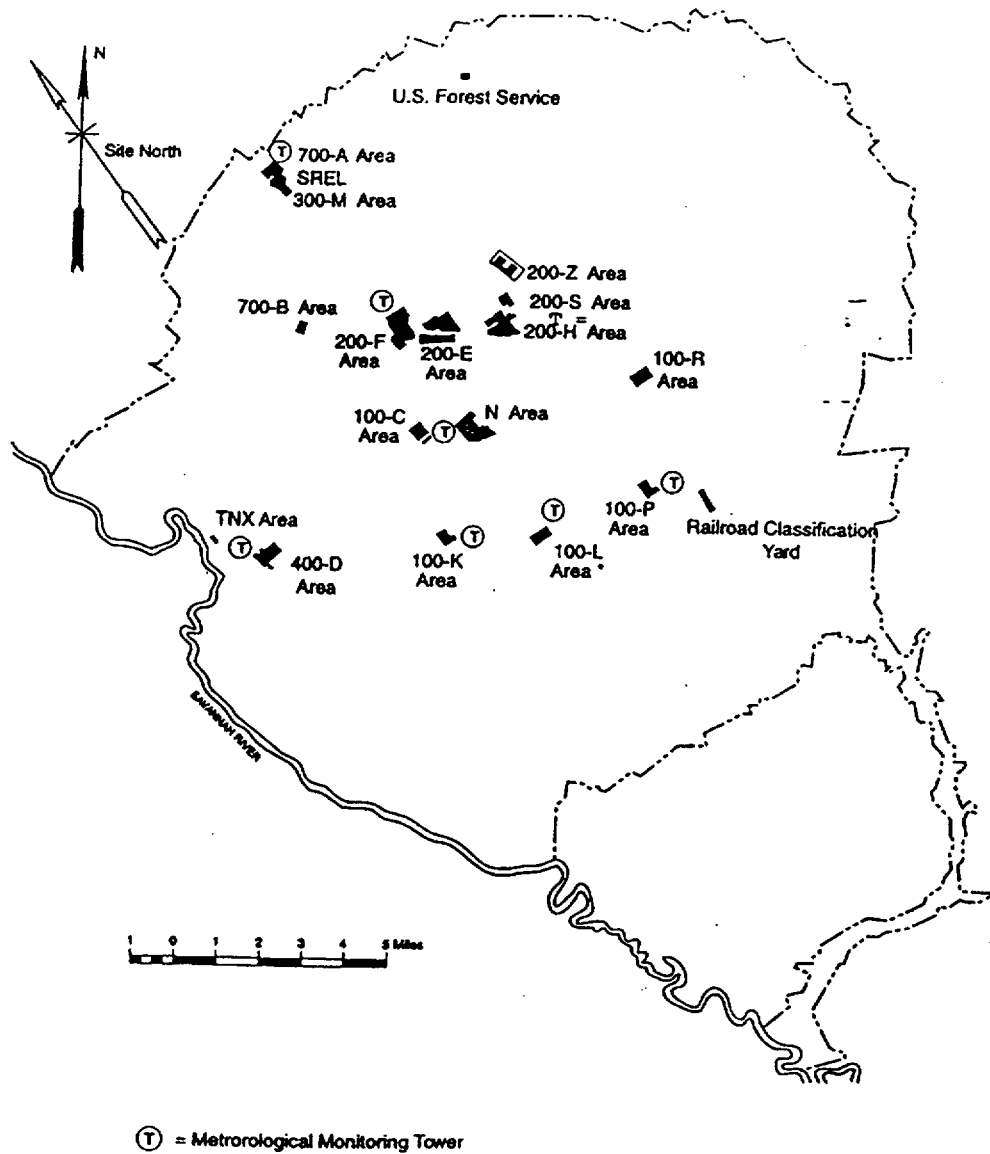


Figure 1.4-10 Locations of SRS Meteorological Monitoring Towers

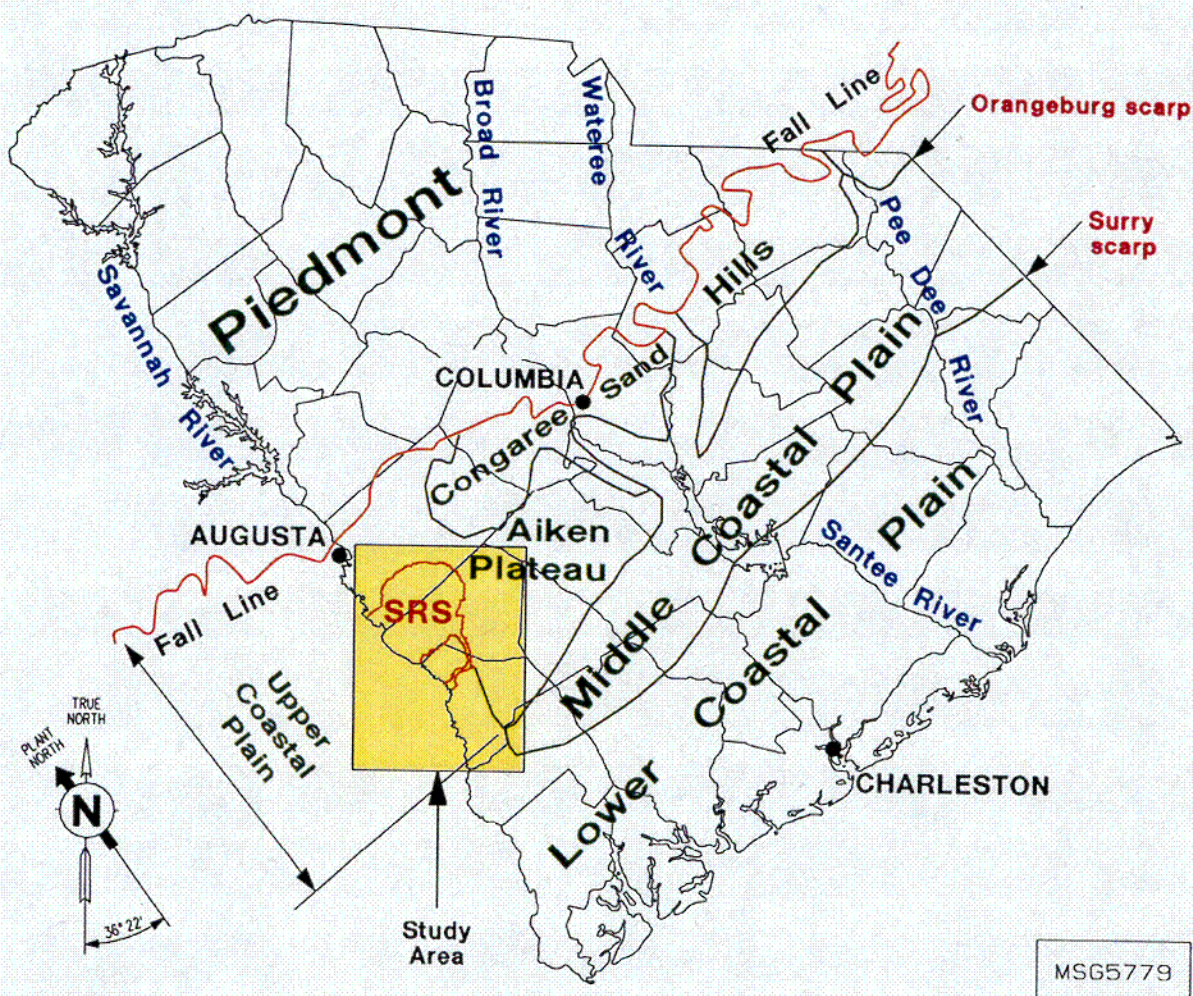
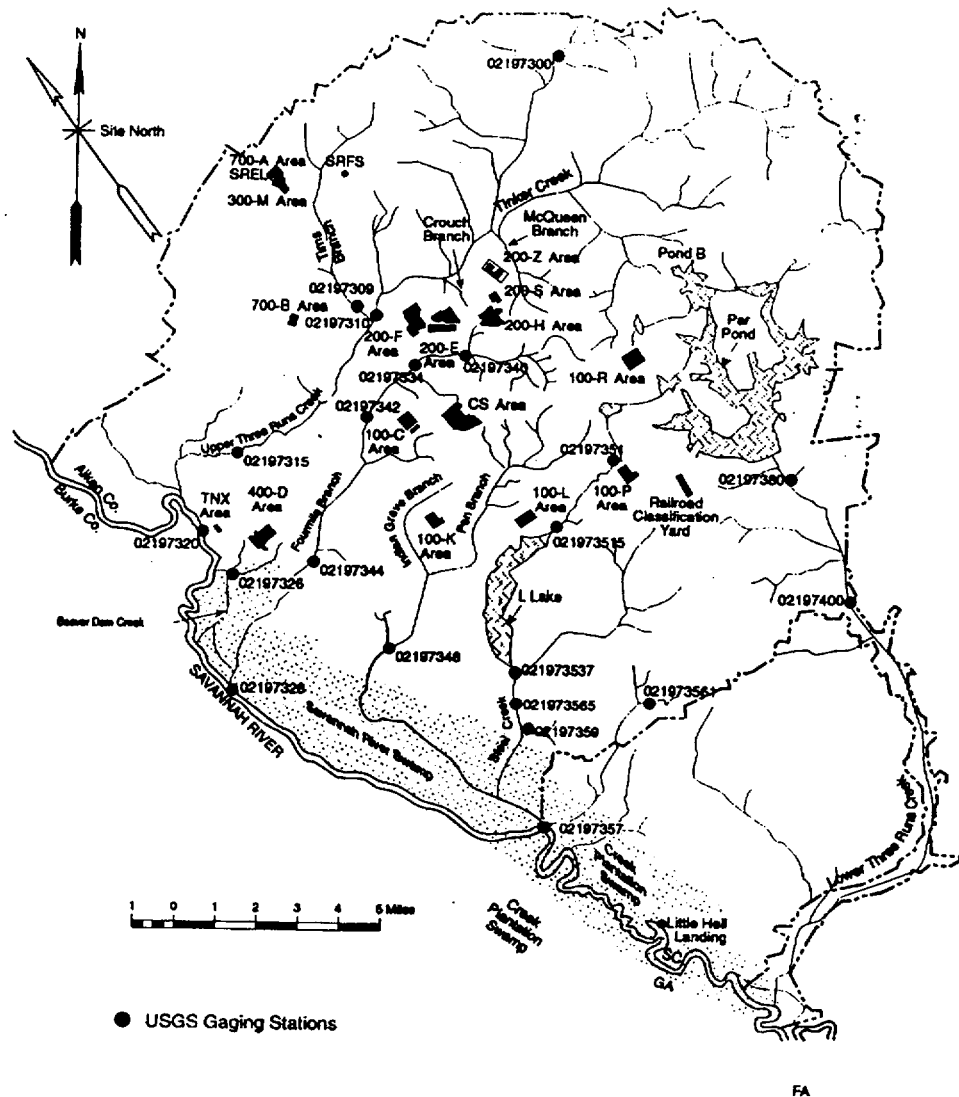


Figure 1.4-11 Regional Physiographic Provinces of South Carolina



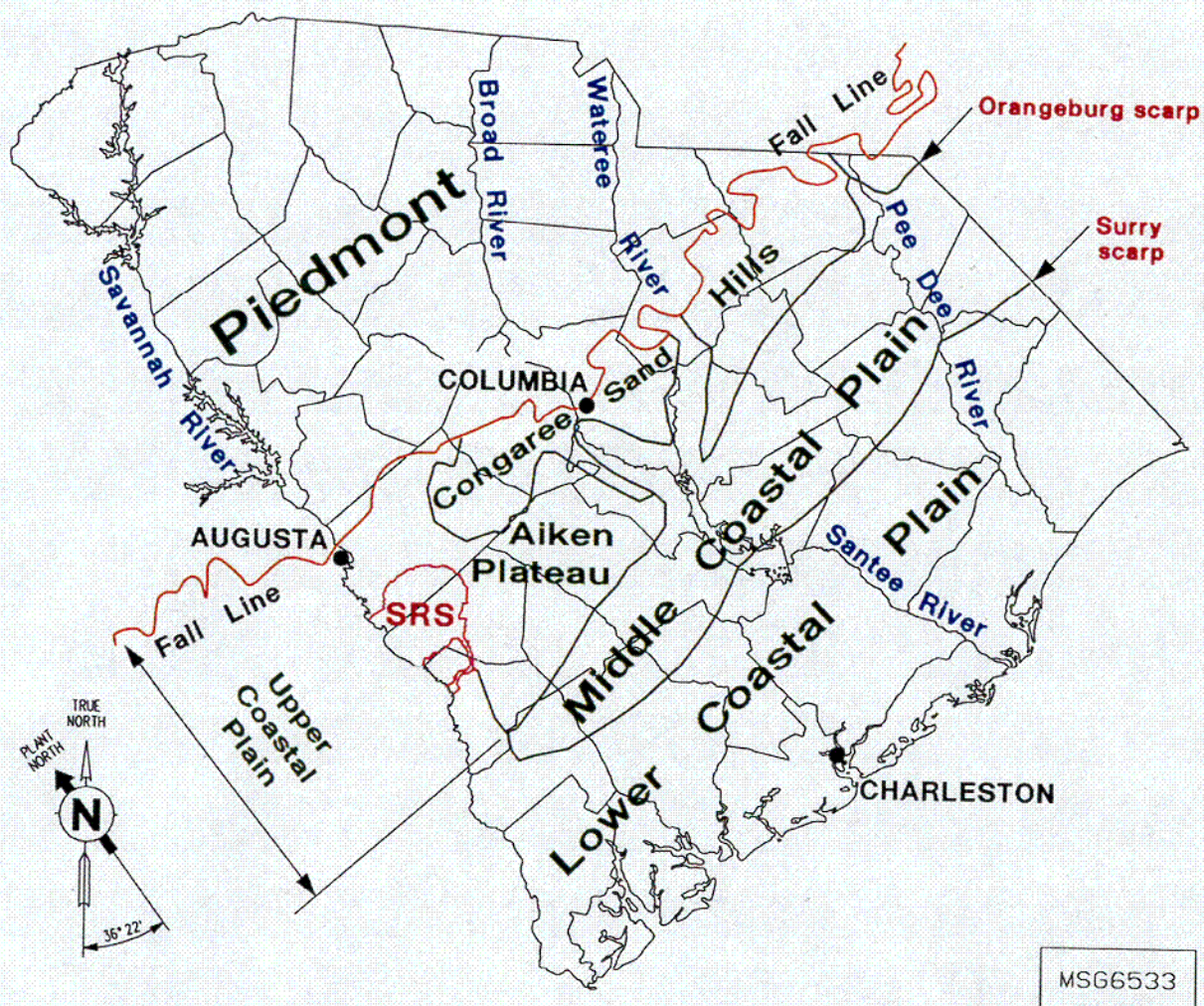


Figure 1.4-13 Physiography of the SRS Area

C10