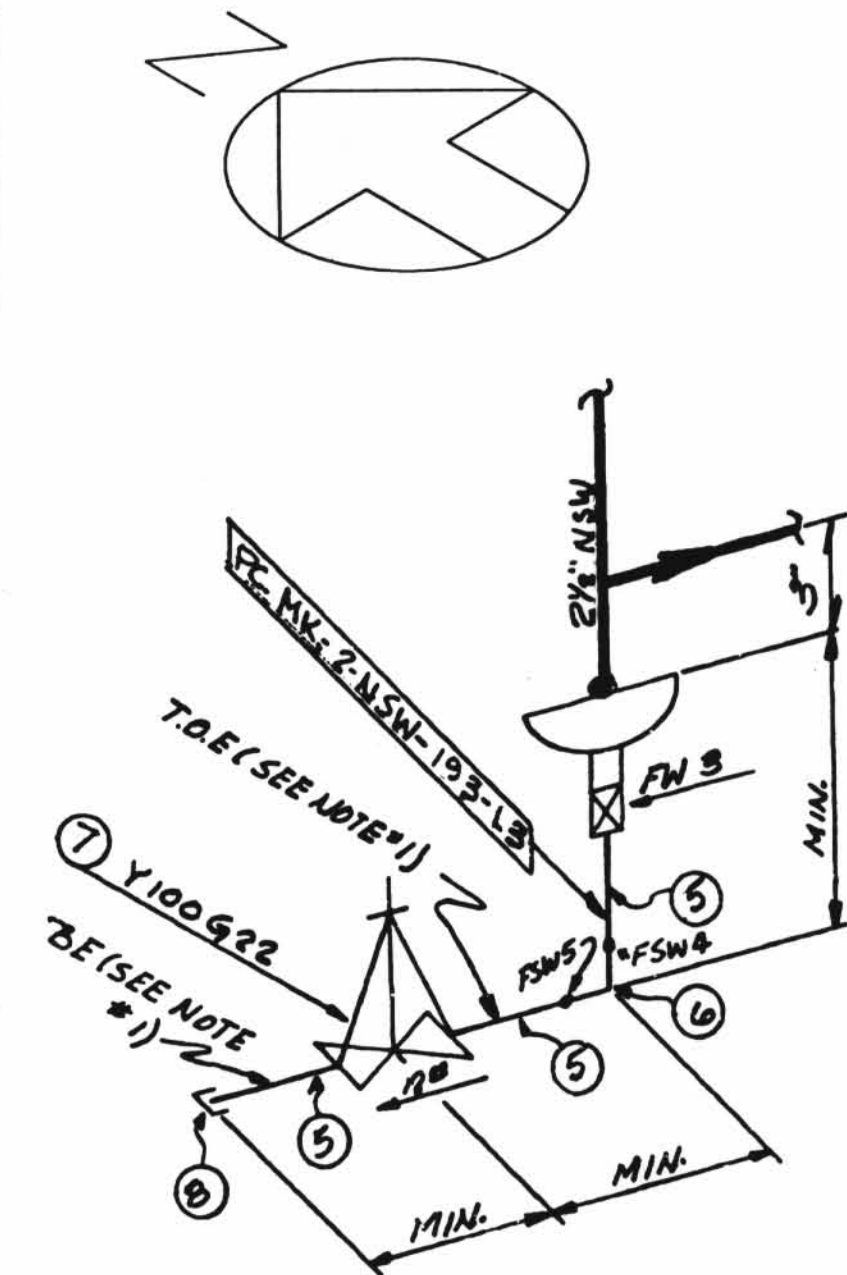


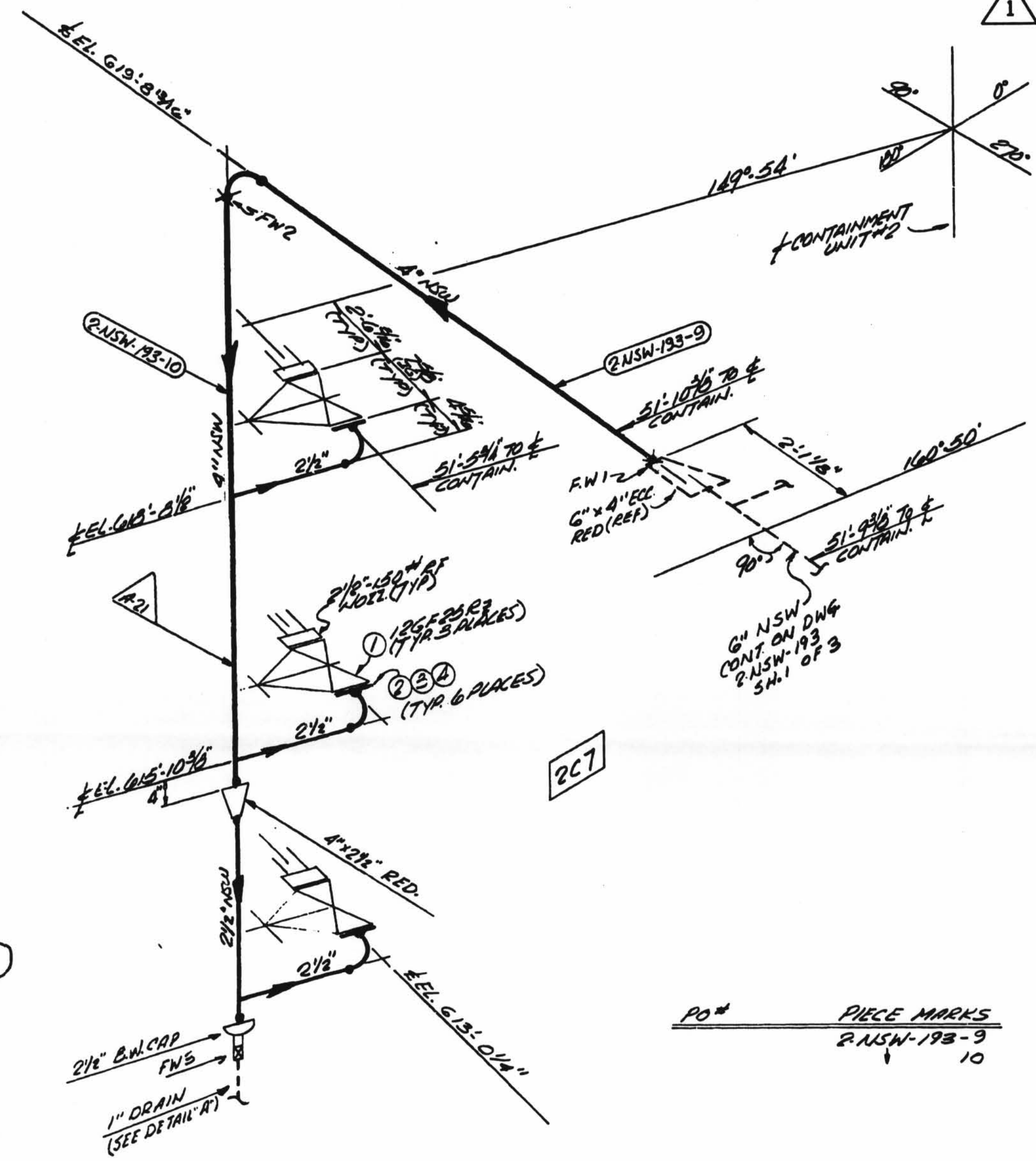
TOTAL  
FW  
3



DETAIL "A"

- NOTES:
1. USE CRANE 425A COMPOUND OR BRINNELL 1698 ON ALL THRD. CONN'S.
  2. USE OF  $\frac{5}{8}$ "  $\phi$   $\times$  3  $\frac{1}{2}$ " LG. A-307 GR. B BOLT IS ACCEPTABLE.

1



PO#  
PIECE MARKS  
2-NSW-193-9  
10

SITE FAB PIECE MARKS  
2-NSW-193-L3

MATERIAL					
QSL	ITEM	QTY.	SIZE	DESCRIPTION	TAG No. OR ASTM MAT'L.
01	1	3	24"	150" C.I. FLGD. GATE VALVE	176FRSR2
	2	6	2 1/2"	150" COMPRESSED ASBESTOS RUBBER BONDED FULL FACE 1/4" THK. GASK	
	3	24	3/8"	5" LG. HEX. HD. MACH. BOLTS (SEE NOTE 2)	A-307 GR. B
	4	24	3/8"	HEAVY HEX NUTS (CLASS 2 TOL)	"
	5	15	1"	PIPE (SCH 80) SMIS C.S.	A-106 GR. B
	6	1	1"	90° 3000" S.W. C.S. ELBOW	A-106 GR. B
	7	1	1"	150" THRD. GATE VALVE BRONZE OR BRASS	Y100G??
	8	1	1"	3000" C.S. THRD. CAP	A-106 GR. B

SIZE	QUAN.	FW
4"	9	2
2 1/2"	6	-
1"	1	1

MATERIAL SPEC. DCCPM102QCS		W.P. = WORKING POINT		B.B.E. = BEVEL BOTH ENDS		FW = FIELD WELD		F = FIELD WELD	
HANGER SEISMIC CLASS II		T.O.E. = TREAD ONE END		P.O.E. = PLAIN ONE END		H = HORIZONTAL		O = AUTOMATIC SHOP WELD	
TEST REQUIREMENTS N/A		T.B.E. = TREAD BOTH ENDS		P.B.E. = PLAIN BOTH ENDS		V = VERTICAL		M = MANUAL SHOP WELD	
MATERIAL CLASS A-21 SPEC. 104		B.O.E. = BEVEL ONE END		S.O.E. = SHARP ONE END		SW = SHOP WELD		V = VERIFY DIMENSION IN FIELD	
		T.O.P. = TOP OF PIPE ELEV.		B.O.P. = BOTTOM OF PIPE ELEV.		FSW = FIELD SHOP WELD			
		O.S.L. = MATERIAL QUALITY REQUIREMENTS		T.L. = TRUE LENGTH					