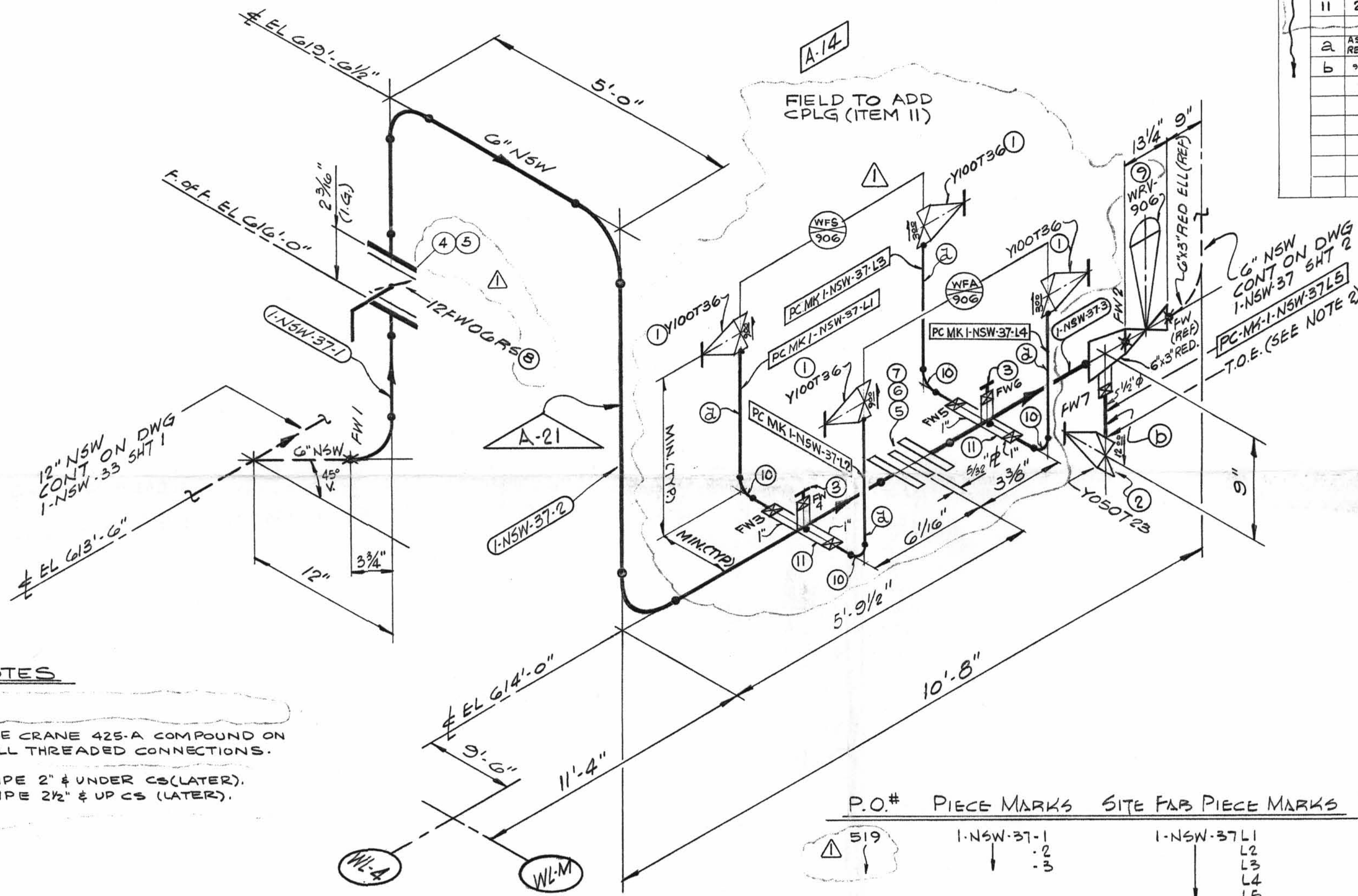
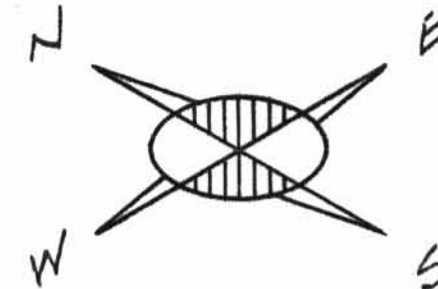


TOTAL
FW



NOTES

1. USE CRANE 425-A COMPOUND ON ALL THREADED CONNECTIONS.
2. PIPE 2" & UNDER CS (LATER). PIPE 2 1/2" & UP CS (LATER).

SIZE	QTY.	PW
6"	24'-0"	1
3"	-	1
1"	3'-0"	20
1/2"	1'-0"	1

DESIGN SPEC. DECPM107QCS

HANGER SEISMIC CLASS II

TEST REQUIREMENTS Q/L

MATERIAL CLASS A-21 SPEC 104

PIPE	FITTINGS	TESTING	ADDITIONAL
A-33 A-106 A-376 A-312	A-105 A-234 A-182	N.D.T. N/A	
STD. XY XXY 10 20 30 40 60 80 100 120 140 160		M.T. P.T. R.T. U.T.	
SMLS WLDD	A-403 A-181	PRESSURE TEST	
		MED. PRESS. DURATION	

W.P. = WORKING POINT
T.O.E. = THREAD ONE END
T.B.E. = THREAD BOTH ENDS
B.O.E. = BEVEL ONE END
T.O.P. = TOP OF PIPE ELEV.
Q.S.L. = MATERIAL QUALITY REQUIREMENTS
T.L. = TRUE LENGTH

B.B.E. = BEVEL BOTH ENDS
P.O.E. = PLAIN ONE END
P.B.E. = PLAIN BOTH ENDS
B.O.P. = BOTTOM OF PIPE ELEV.
Q.S.L. = MATERIAL QUALITY REQUIREMENTS
T.L. = TRUE LENGTH

FW = FIELD WELD
H = HORIZONTAL
V = VERTICAL
SW = SHOP WELD
FSW = FIELD SHOP WELD

POUR/ZONE No. A-14
REQUIRED COMPLETION DATE 9-23-71
FABRICATED BY TUBECO

FLOW DIAGRAM 1-2-5114A
WELD PROCEDURE SEE NOTE 3

REVISION RECORD	LIVSEY & COMPANY, INC.
NO. DATE DESCRIPTION	DONALD C. COOK NUCLEAR PLANT
1-NSW-37 (sheet 1 of 2)	DWN: WJP DATE: 9-16-71
Lower Containment Ventilation Unit 2 Supply Line	CKD: GN DATE: 9-23-71
	ISSUED
	REF. DWG. 15497-2

LABOR COST CONTROL	LABOR COST CONTROL
USE ONLY WITH	USE ONLY WITH
PIPE SIZE	PIPE SIZE
SCHEDULE	SCHEDULE
TYPE	TYPE
ISO START DATE	ISO START DATE
ISO FINISH DATE	ISO FINISH DATE
WORK OPERATION	WORK OPERATION
HANGER INST.	HANGER INST.
ERECT	ERECT
WELD	WELD
RADIO-G - X-RAY	RADIO-G - X-RAY
STRESS RELIEVE	STRESS RELIEVE
MISC. WORK	MISC. WORK

QSL	ITEM	QTY.	SIZE	DESCRIPTION	TAG No. OR ASTM MAT'L.	HEAT NO.
1	4	1"	600#	CS SW GLOBE VALVE	Y100T36	
2	1	1/2"	200#	BRONZE OR BRASS THRD GLOBE VA	Y050T23	
3	2	1"	8000#	CS SW PLUG	A-181	
4	8	-	3/4" x 5 1/2"	HEX MACHINE BOLT	A-307	
5	16	3/4"		HEAVY HEX NUT	GRB	
6	8	-	3/4" x 3 1/2"	HEX MACHINE BOLT		
7	2	6"		1/16" THK GASKET COMP ASBESTOS RUBBER BONED FULL FACE		
8	1	6"		125# BUTTERFLY WAFER VA, CI	12FW06RS	
9	1	3"		REGULATING VALVE	WRV-906	
10	4	1"		3000# CS SW 90° ELL	A-181	
11	2	1"		3000# CS SW HALF CPLG	GRB	
2	AS REQD	1"		PIPE (SCH. 80 SMLS) CS	410G GR-B	
b	2	1/2"		PIPE (SCH. 80 SMLS) CS		

REV.	DATE	DR	CHG	DESCRIPTION	REMARKS
1	5/2/72	SG	GN	ADDED: ITEMS 4 THRU 11; WFS-906 & RELATED PIPING; BOX FOR TOTAL NO. OF FW'S; NOTES REVISED: ITEMS 1 & 3; PIPING FOR WFA-906. DELETED NOTE 1. PER AEP DWG 1-5497-4	FIELD ACTION REQD

P.O.# PIECE MARKS SITE FAB PIECE MARKS

519	1-NSW-37-1	1-NSW-37-1
	2	L2
	3	L3
		L4
		L5

N.P.S. DESIGNS

FABRICATOR NOTE: FABRICATION MUST CONFORM TO LATEST A.E.P. ARRGT. DWGS.