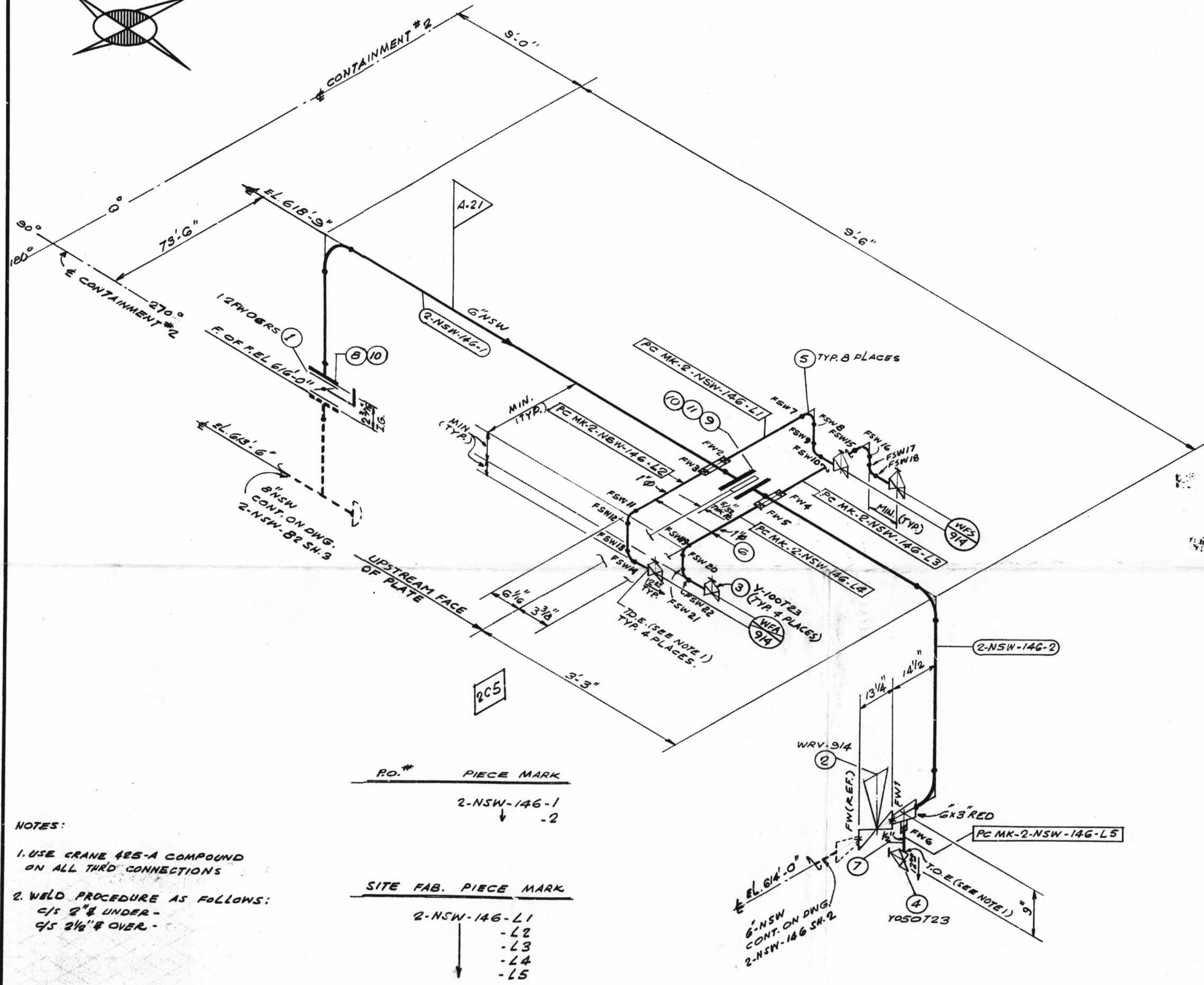
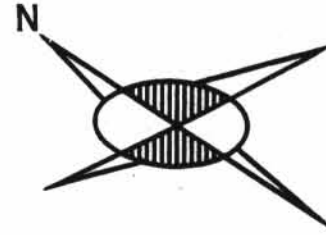


TOTAL
FW
22



NOTES:

1. USE CRANE #25-A COMPOUND ON ALL THRD CONNECTIONS
2. WELD PROCEDURE AS FOLLOWS:
C/S 2" & UNDER -
Q/S 2 1/2" & OVER -

PO.# PIECE MARK
2-NSW-146-1
-2

SITE FAB. PIECE MARK
2-NSW-146-L1
-L2
-L3
-L4
-L5

SIZE	QUAN.	FW
6	17	0
3	-	1
1	4	20
1/2	1	1

DESIGN SPEC.	OCCPM 102 QCS										S.P. = WELDING POINT T.O.P. = THREAD BOTH ENDS T.P. = THREAD BOTH ENDS T.O.P. = TOP OF PIPE ELEV S.S.L. = MATERIAL QUALITY REQUIREMENTS T.L. = TRUE LENGTH				B.S.E. = BEVEL BOTH ENDS B.P.E. = BEVEL BOTH ENDS P.P.E. = PLAIN BOTH ENDS F.P.E. = FLARE BOTH ENDS B.O.P. = BOTTOM OF PURE ELEV.				F.W. = FIELD WELD H = HORIZONTAL V = VERTICAL SW = WELD SHOP WELD F.W. FIELD SHOP WELD				B = FIELD WELD A = AUTOMATIC SHOP WELD R = MANUAL SHOP WELD S = VERY DIMENSION IN FIELD								
HANGER SEISMIC CLASS	II																														
TEST REQUIREMENTS	N/A																														
MATERIAL CLASS	A-21 SPEC. 104																														
PIPE																				FITTINGS				TESTING				ADDITIONAL			
A-33		A-106		A-312		A-312								A-105		A-234		A-182		N.D.T.		N/A.									
		GR. B																		M.T.		P.T.		B.T.		U.T.					
STD.		XY		XXY		10		20		30		40		60		80		100		120		140		160							
SMLS		WELD														A-403		A-181				PRESSURE TEST									
																						MED.		PRESS.		DURATION					

ISO SHT. NO. 2128				HEAT NO.	
QSL	ITEM	QTY.	SIZE	MATERIAL DESCRIPTION	TAG NO. OR ASTM MAT'L.
01	1	1	6"	125" C.I. WAFER BUTTERFLY VA.	12FW06RS
	2	1	3"	B.W. REGULATING VA.	WRV-914
	3	4	1"	200" SCR'D GLOBE VA BRONZE OR BRASS	Y100T23
	4	1	1/2"	200" SCR'D GLOBE VA	Y050T23
	5	8	1"	3000" S.W. C.C. 90° EL L	A-31
	6	1	1"	PIPE (SCH. 80) SMLS. C.S.	A-106 GR. B
	7	1	1/2"	PIPE (SCH. 80) SMLS. C.S.	A-106 GR. B
	8	8	3/4"	5 1/2" LG. HEX. HD. MACH. BOLT	A-307 GR. B
	9	2	6"	1/16" THK. COMP. ASBESTOS GASKET	A-307 GR. B
	10	16	3/4"	HEAVY HEX NUT CL. 2 TOL.	A-307 GR. B
	11	8	3/4"	3 1/2" LG. HEX. HD. MACH. BOLT	A-307 GR. B

REVISION RECORD		
NO.	DATE	DESCRIPTION

D-35A

2NSW-146 (sheet 1 of 2)
Lower Containment Ventilation
Unit 4 Supply Line

POUR/ZONE No. 225	FLOW DIAGRAM 1-2-5114A
REQUIRED COMPLETION DATE	Q.S.L. 01
FABRICATED BY TWAECO	WELD PROCEDURE SEE NOTE 2
NPS DESIGNS INC. NEW YORK, N.Y.	
LIVSEY & COMPANY, INC. INDIANA & MICHIGAN ELECTRIC CO. DONALD C. COOK NUCLEAR PLANT	
FABRICATOR NOTE: FABRICATION MUST CONFORM TO LATEST A.E.P. ARRG. DWGS.	DWN: SG DATE: 1/27/79 CD: LDB ISSUED REF. DWG. E-5497A
DATE: 1/27/79	DWG. NO. 2-NSW-146 SH 1 OF 2