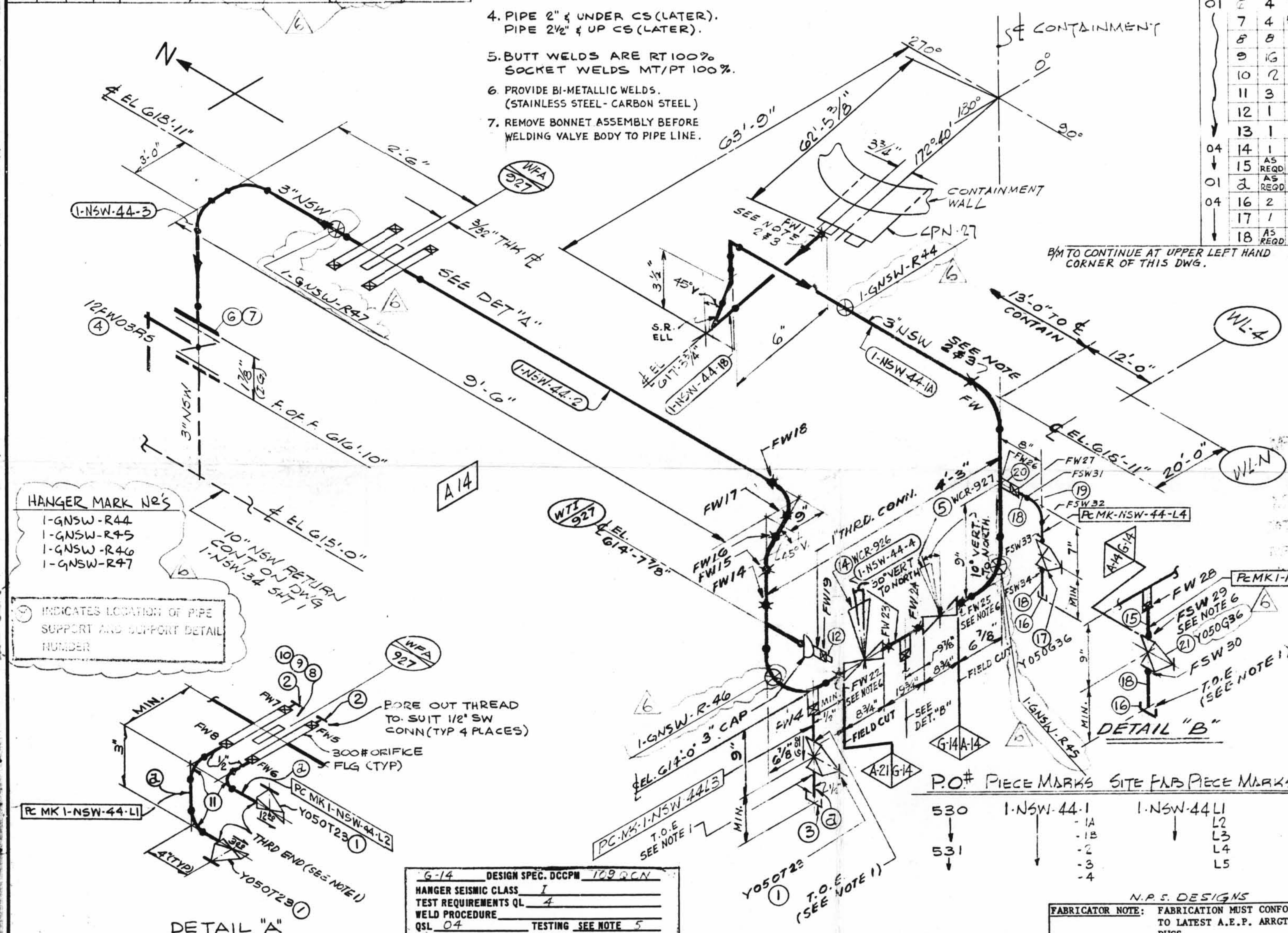


OSL	ITEM	QTY	SIZE	DESCRIPTION	TAG NO OR ASTM MATL	HEAT NO.
04	19	1	1/2"	3000# C.S., S.W. 90° ELL.	A-181 GR. 2 OR II	
20	1	1/2"	3000# C.S., S.W. HALF CFLG.			
21	1	1/2"	600# C.S., S.W. GATE VALVE	Y050G36		

- NOTES:
- USE CRANE 425A COMPOUND ON ALL THRD CONNS.
 - FABRICATOR TO MAKE THIS END OF SPOOL 6" LONGER WITH PLAIN END TO FACILITATE INSTALLATION.
 - FW'S PERTAINING TO THIS NOTE ARE TO BE MADE AFTER PIPE IS PRE-ALIGNED & ENDS HAVE BEEN PREPARED FOR WELDING TO SUIT AS BUILT CPN.
 - PIPE 2" & UNDER CS (LATER).
PIPE 2 1/2" & UP CS (LATER).
 - BUTT WELDS ARE RT100%
SOCKET WELDS MT/PT 100%.
 - PROVIDE BI-METALLIC WELDS.
(STAINLESS STEEL - CARBON STEEL)
 - REMOVE BONNET ASSEMBLY BEFORE
WELDING VALVE BODY TO PIPE LINE.

SUPPORT MARK NUMBERS
FOR LATER CONSTRUCTION
SUPPORT DETAIL

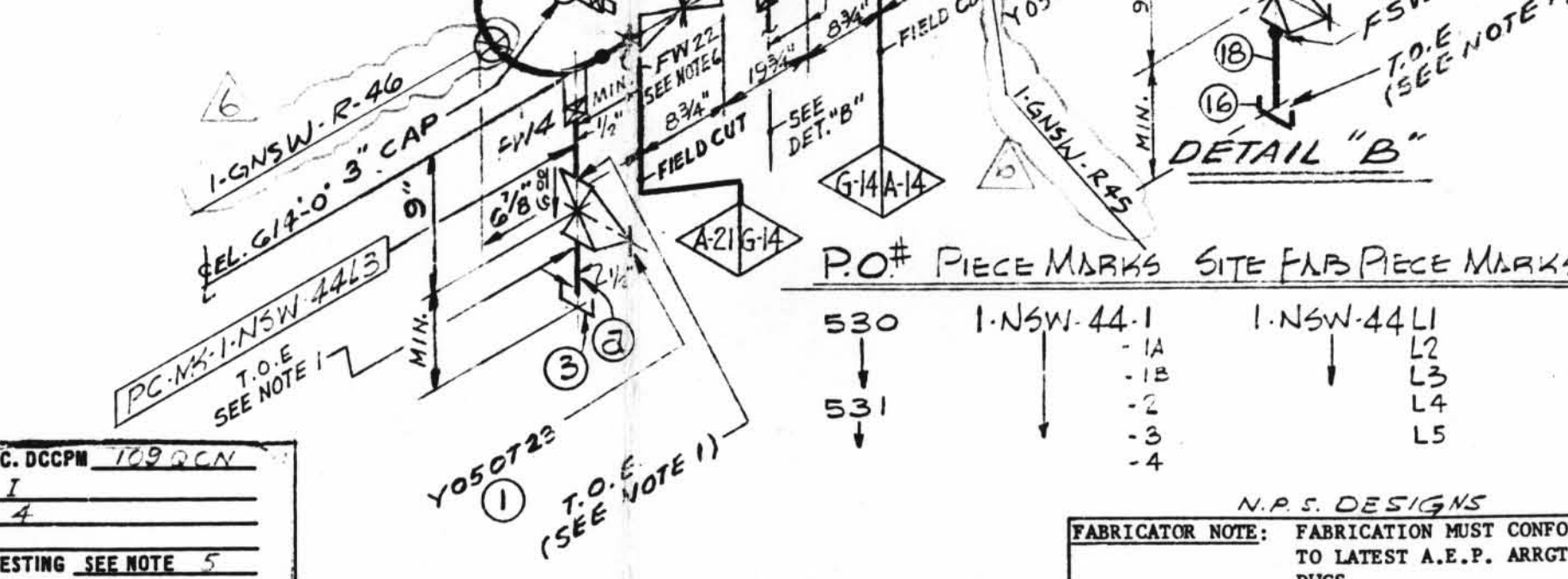
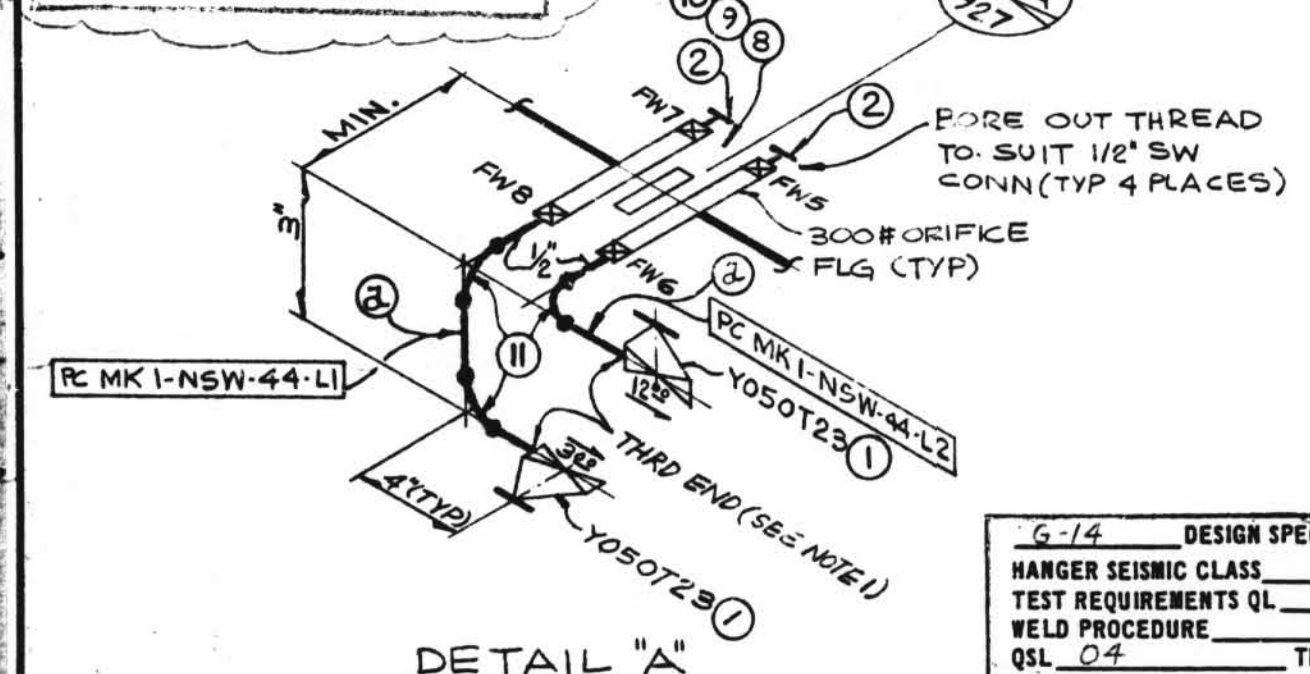
OSL	ITEM	QTY	SIZE	DESCRIPTION	TAG NO OR ASTM MATL	HEAT NO.
01	1	3	1/2"	200# BRONZE OR BRASS THREADED GLOBE VALVE	Y050T23	
2	2	1/2"	2000# C.S. PLUG	A-181 GR. 2 OR II		
3	1	1/2"	3000# C.S. THRD CAP	Y050BRS		
4	1	3"	125# BUTTERFLY WAFER VA, CI	WCR-927		
5	1	3"	B.W. DIAPH. CONTROL VALVE, S.S.	WCR-927		
6	4	5/8"	5/8" X 5" LG HEX MACHINE BOLT	A-307 GR. B		
7	4	5/8"	HEAVY HEX NUT	A-307 GR. B		
8	8	3/4"	3/4" X 4 1/4" LG STUD BOLT	A-193 GR. 2H		
9	16	3/4"	HEAVY HEX NUT	A-194 GR. 2H		
10	2	3"	FLEXITALLIC GASKET STYLE CG TYPE 304 SS & ASBESTOS FILLER 1/8" THK	A-181 GR. 2 OR II		
11	3	1/2"	3000# C.S. SW 90° ELL	GR. B		
12	1	1"	THERMOWELL	WTI-927		
13	1	1/2"	600# C.S. SW GLOBE VA.	Y050T36		
14	1	3"	B.W. DIAPH. CONTROL VALVE, S.S.	WCR-926		
15	1	1/2"	PIPE (SCH. 40 S) SMLS., S.S.	A-312 GR. TP-304		
16	2	1/2"	3000# C.S. THRD. CAP	GR. B		
17	1	1/2"	600# C.S., S.W. GATE VALVE	Y050G36		
18	1	1/2"	PIPE (SCH. 80 SMLS) C.S.	A-106 GR. B		



REV	DATE	DR	CHK	DESCRIPTION	REMARKS
1	5/18/72	SG	GN	RELEASED PIPING AT CPN. ADDED: NOTES 2 THRU 5; ITEMS 4 THRU 12; PC MK 1A 1B & FW'S; P.O.#; BOX FOR TOTAL NO. OF FW'S. REVISED: WTI-927; LOCATION OF SPEC. CHG; TESTING FOR A-14 SPEC. PIPING FOR WFA-927 (DETAIL A); PER AEP DWG 15497-4.	FIELD ACTION REQ'D
2	10/76	NM		REVISED BY A.E.P. DESIGN PER RFC-DC-12-671 TO REFLECT AS BUILT WHEN ISOLATION VALVE WAS ADDED.	NO ACTION REQ'D
3	1/13/82	WT	DR	PER RFC-DC-12-2549, ADDED PIPE SPEC. G-14, DIM'S., A-MK-4, L4 & L5; WELD BOX, FIELD WELDS FW 22 TO 23, FSW 29 TO 34, ITEMS 14 TO 21 TO B/M. REVISED ITEM NOS. 3 & 5 IN R4.	FIELD ACTION REQ'D
4	1/28/82	JM	EG	PER RFC-DC-12-2549 ADDED 2 1/2" X 14" O.D.	NO FIELD ACTION REQ'D
5	4/28/84	ARY	JM	PER RFC-12-2549 REVISED PIPING PER "AS BUILT".	NO FIELD ACTION REQ'D
6	9/18/84	DR	LB	PER RFC-DC-12-2549 REVISED ADDED SUPPORT MARK UPS, SUPERSEDED HGR ISO 2-NSW-44, ALL ABOVE TO REFLECT AS-BUILT CONDITIONS.	NO FIELD ACTION REQ'D

HANGER MARK N°S
1-NSW-R44
1-NSW-R45
1-NSW-R46
1-NSW-R47

INDICATES LOCATION OF PIPE
SUPPORT AND SUPPORT DETAIL
NUMBER



SIZE	QUAN.	FW
3"	33	12
1/2"	2	8
1"	1	1

DESIGN SPEC	DESIGN	TESTING
A-14 DESIGN SPEC. DCCPM 10292CN	DESIGN	TESTING
HANGER SEISMIC CLASS I	DESIGN	TESTING
TEST REQUIREMENTS QL 4	DESIGN	TESTING
WELD PROCEDURE SEE NOTE 4	DESIGN	TESTING
QSL 04	DESIGN	TESTING

DESIGN SPEC	DESIGN	TESTING
A-21 DESIGN SPEC. DCCPM 10292CS	DESIGN	TESTING
HANGER SEISMIC CLASS II	DESIGN	TESTING
TEST REQUIREMENTS QL 1	DESIGN	TESTING
WELD PROCEDURE SEE NOTE 4	DESIGN	TESTING
QSL 01	DESIGN	TESTING

POUR/ZONE No.	REQUIRED COMPLETION DATE	FABRICATOR MUST CONFORM TO LATEST A.E.P. ARRGT. DWGS.
1NSW-44	10/76	Upper Containment Ventilation Unit 2 Return Line