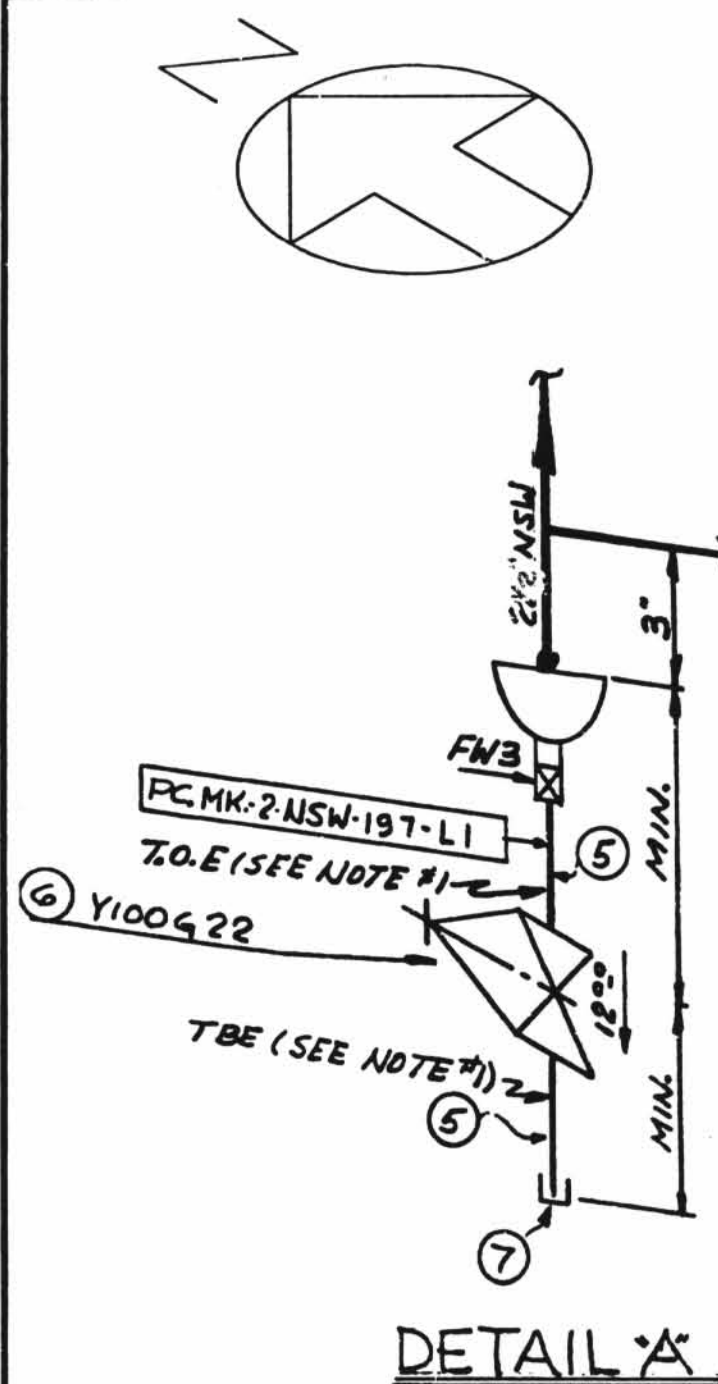


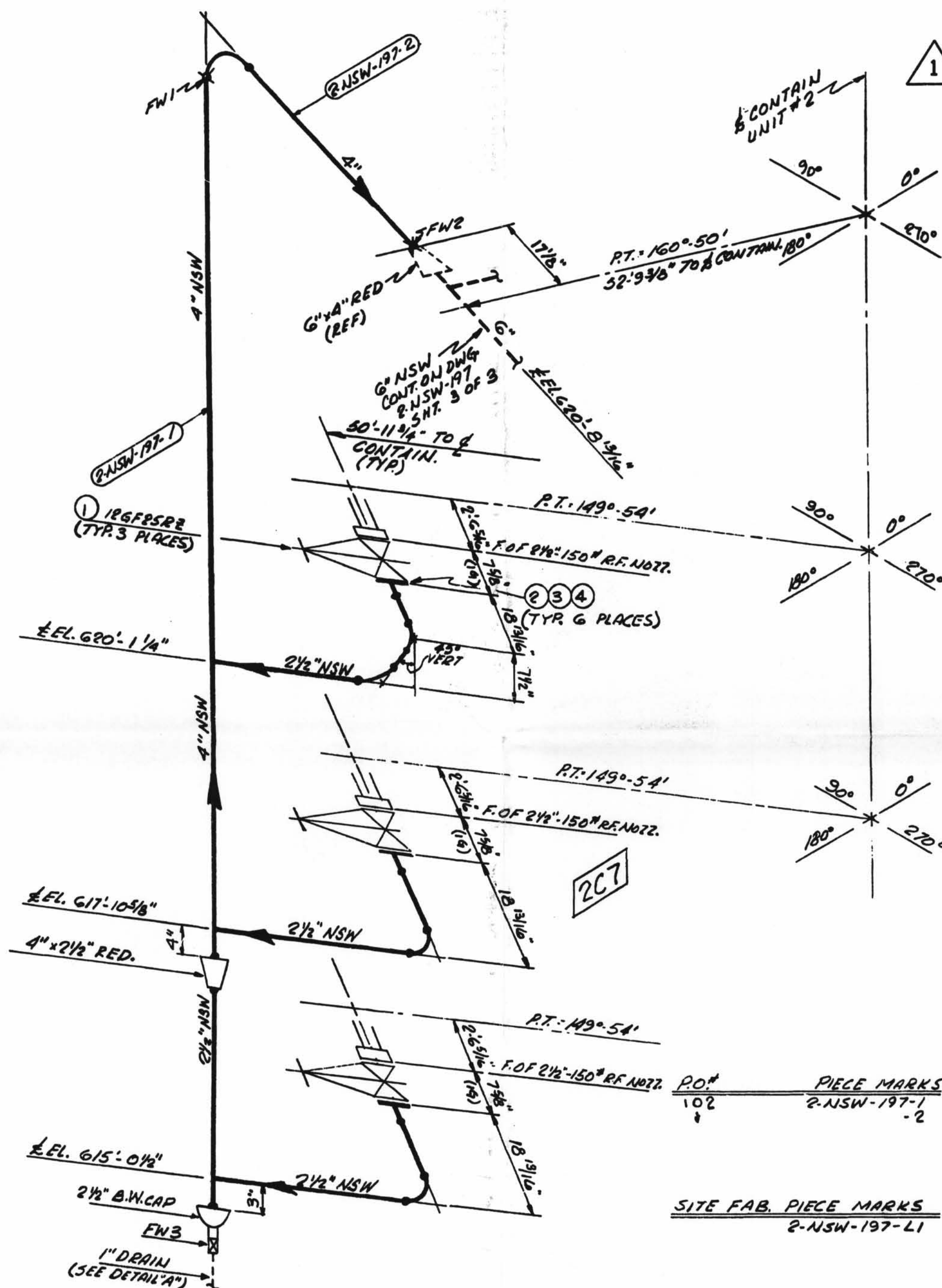
TOTAL
FW
3



NOTES:

1. USE CRANE 495A COMPOUND OR GRINNELL 1698 ON ALL THRD. CONNS.
2. USE OF $\frac{5}{8}$ " ϕ \times $3\frac{1}{2}$ " LG. A-307 GR. B BOLT IS ACCEPTABLE.

1



MATERIAL							TAG No. OR ASTM MATL.	
QSL	ITEM	QTY.	SIZE	DESCRIPTION				
01	1	3	2 1/2"	125" C.I. F4D. GATE VA.			126P25A2	
	2	6	2 1/2"	150" COMPRESSED ASBESTOS RUBBER BONDED FULL FACE GASKET 1/2" THK.				
	3	24	3/8"	3" LG. HEX. HD. MACH. BOLTS (SEE NOTE 2)			A307 GR. B	
	4	24	5/8"	HEAVY HEX NUTS CLASS 270.			"	
	5	3	1"	PIPE (SCH 80) SMLS C.S.			A106, GR. B	
	6	1	1"	150" THRD. GATE VA. BRONZE OR BRASS			Y100 GR. B	
	7	1	1"	3000" C.S. THRD. CAP			A181 GR. B	

D-13A

2-NSW-197 (Sheet 1 of 3)
Lower Containment Ventilation
Unit 2 Return Line

1	09/67/99	THIS DRAWING HAS BEEN CONVERTED FROM A MANUAL FORMAT TO THE IGS-SCANNED DRAWING FORMAT AND SUPERSEDES ALL PREVIOUS REVISIONS.		NO FIELD ACTION REQ'D.
		ADDED : NOTE FOR ITEM 3 PER RFC 12-2769, AB-D02574, DCDR 10-10-1003 GNL/KR/99		
REV.	DATE	DESCRIPTION		FIELD STATUS
		POUR/ZONE No. 2C7 FLOW DIAGRAM 1-2-5114A		
		Q.S.L. 01		
REFER TO ORIGINAL ISSUE MICROFILM FOR SIGNATURES		DWG. No.	CONTAINMENT BLDG. 2	
		2-NSW-197		
		SH 1	REV 1	
		AEP SERVICE CORP. 1 RIVERSIDE PLAZA COLUMBUS, OH 43216		

SIZE	QUAN.	FW
4"	8	2
2 1/2"	10	-
1"	1	1

MATERIAL SPEC.		DCCPM1020CS										W.P. = WORKING POINT T.O.E. = THREAD ONE END T.B.E. = THREAD BOTH ENDS S.O.E. = SHAPE ONE END T.O.P. = TOP OF PIPE ELEV. Q.S.L. = MATERIAL QUALITY REQUIREMENTS T.L. = TRUE LENGTH				B.B.E. = BEVEL BOTH ENDS P.B.E. = PLAIN BOTH ENDS S.O.E. = SHAPE ONE END B.O.P. = BOTTOM OF PIPE ELEV.																					
HANGER SEISMIC CLASS		II										N/A																									
TEST REQUIREMENTS		N/A																																			
MATERIAL CLASS		A-21 SPEC. 104																																			
																		PIPE										FITTINGS									
SA-53				SA-106				SA-376				SA-312								SA-105				SA-234				SA-182									
																		GR. B																			
STD.		XT		XXY		10		20		30		40		60		80		100		120		140		160													
																										SA-403				SA-181							
Q.M.S.		W.L.D.																FOR AS INSTALLED MATERIAL - SEE B.O.M. ABOVE																			