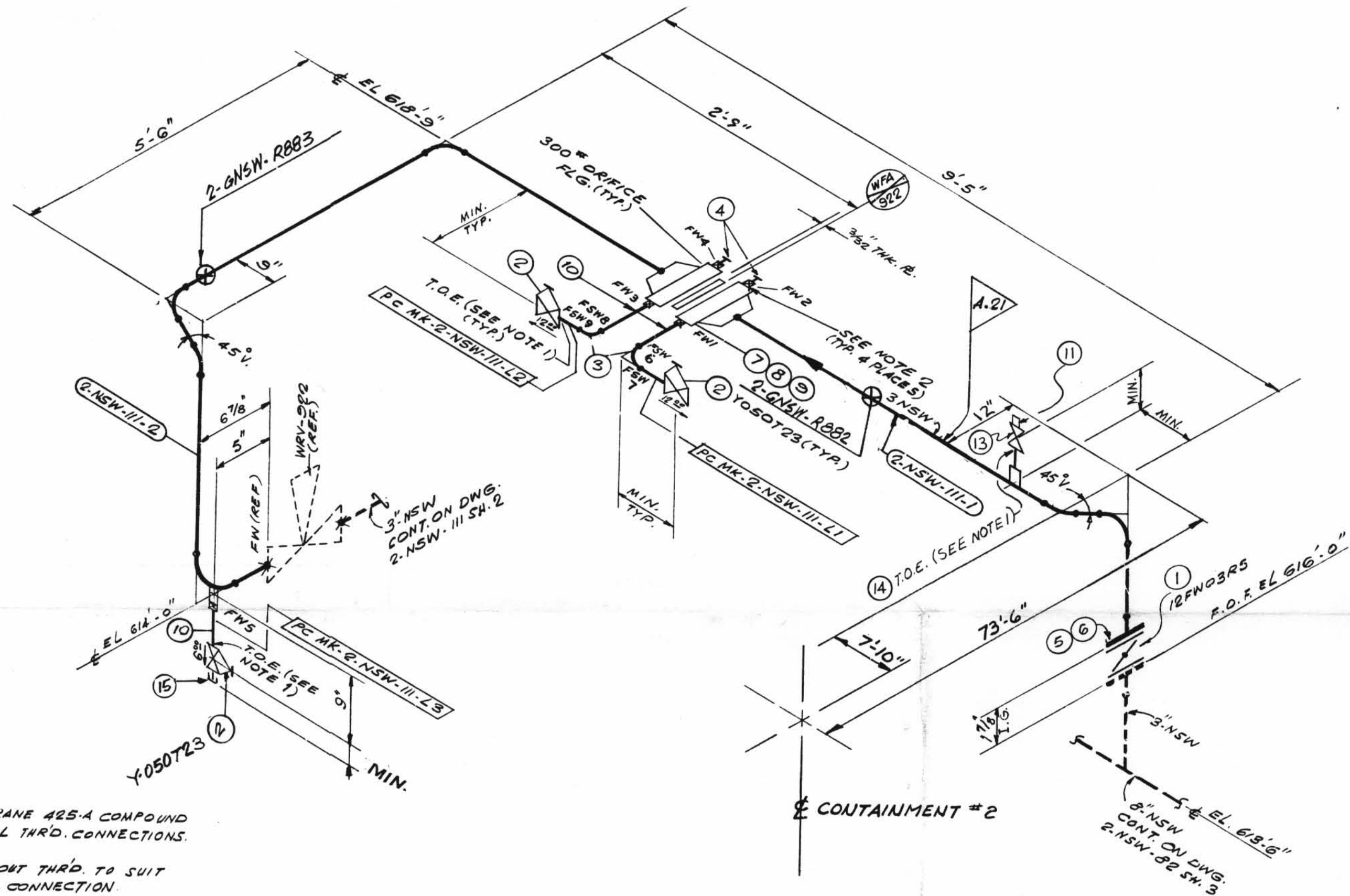
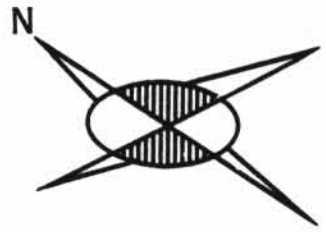


**TOTAL
FW
9**



NOTES:

1. USE CRANE 425-A COMPOUND ON ALL THRD. CONNECTIONS.
2. BORE OUT THRD. TO SUIT $\frac{1}{2}$ " S.W. CONNECTION.
3. WELD PROCEDURE AS FOLLOWS:
C/S 2" & UNDER-
C/S 2 $\frac{1}{2}$ " & OVER-

⑦ INDICATES LOCATION OF PIPE
SUPPORT AND SUPPORT DETAIL
NUMBER

SUPPORT MARK NUMBERS:
 810014 810015
 810016 810017 810018 810019
 810020 810021 810022 810023
 810024 810025 810026 810027
 810028 810029 810030 810031
 810032 810033 810034 810035
 810036 810037 810038 810039
 810040 810041 810042 810043
 810044 810045 810046 810047
 810048 810049 810050 810051
 810052 810053 810054 810055
 810056 810057 810058 810059
 810060 810061 810062 810063
 810064 810065 810066 810067
 810068 810069 810070 810071
 810072 810073 810074 810075
 810076 810077 810078 810079
 810080 810081 810082 810083
 810084 810085 810086 810087
 810088 810089 810090 810091
 810092 810093 810094 810095
 810096 810097 810098 810099
 810100 810101 810102 810103
 810104 810105 810106 810107
 810108 810109 810110 810111
 810112 810113 810114 810115
 810116 810117 810118 810119
 810120 810121 810122 810123
 810124 810125 810126 810127
 810128 810129 810130 810131
 810132 810133 810134 810135
 810136 810137 810138 810139
 810140 810141 810142 810143
 810144 810145 810146 810147
 810148 810149 810150 810151
 810152 810153 810154 810155
 810156 810157 810158 810159
 810160 810161 810162 810163
 810164 810165 810166 810167
 810168 810169 810170 810171
 810172 810173 810174 810175
 810176 810177 810178 810179
 810180 810181 810182 810183
 810184 810185 810186 810187
 810188 810189 810190 810191
 810192 810193 810194 810195
 810196 810197 810198 810199
 810200 810201 810202 810203
 810204 810205 810206 810207
 810208 810209 810210 810211
 810212 810213 810214 810215
 810216 810217 810218 810219
 810220 810221 810222 810223
 810224 810225 810226 810227
 810228 810229 810230 810231
 810232 810233 810234 810235
 810236 810237 810238 810239
 810240 810241 810242 810243
 810244 810245 810246 810247
 810248 810249 810250 810251
 810252 810253 810254 810255
 810256 810257 810258 810259
 810260 810261 810262 810263
 810264 810265 810266 810267
 810268 810269 810270 810271
 810272 810273 810274 810275
 810276 810277 810278 810279
 810280 810281 810282 810283
 810284 810285 810286 810287
 810288 810289 810290 810291
 810292 810293 810294 810295
 810296 810297 810298 810299
 810300 810301 810302 810303
 810304 810305 810306 810307
 810308 810309 810310 810311
 810312 810313 810314 810315
 810316 810317 810318 810319
 810320 810321 810322 810323
 810324 810325 810326 810327
 810328 810329 810330 810331
 810332 810333 810334 810335
 810336 810337 810338 810339
 810340 810341 810342 810343
 810344 810345 810346 810347
 810348 810349 810350 810351
 810352 810353 810354 810355
 810356 810357 810358 810359
 810360 810361 810362 810363
 810364 810365 810366 810367
 810368 810369 810370 810371
 810372 810373 810374 810375
 810376 810377 810378 810379
 810380 810381 810382 810383
 810384 810385 810386 810387
 810388 810389 810390 810391
 810392 810393 810394 810395
 810396 810397 810398 810399
 810400 810401 810402 810403
 810404 810405 810406 810407
 810408 810409 810410 810411
 810412 810413 810414 810415
 810416 810417 810418 810419
 810420 810421 810422 810423
 810424 810425 810426 810427
 810428 810429 810430 810431
 810432 810433 810434 810435
 810436 810437 810438 810439
 810440 810441 810442 810443
 810444 810445 810446 810447
 810448 810449 810450 810451
 810452 810453 810454 810455
 810456 810457 810458 810459
 810460 810461 810462 810463
 810464 810465 810466 810467
 810468 810469 810470 810471
 810472 810473 810474 810475
 810476 810477 810478 810479
 810480 810481 810482 810483
 810484 810485 810486 810487
 810488 810489 810490 810491
 810492 810493 810494 810495
 810496 810497 810498 810499
 810500 810501 810502 810503
 810504 810505 810506 810507
 810508 810509 810510 810511
 810512 810513 810514 810515
 810516 810517 810518 810519
 810520 810521 810522 810523
 81

SIZE	QUAN.	FW
3	23	0
1/2"	2	9

[illegible]

POUR/ZONE No. <u>2C5</u> REQUIRED COMPLETION DATE _____ FABRICATED BY <u>TUBECO</u>		FLOW DIAGRAM <u>12-5114A</u> O.S.L. _____ WELD PROCEDURE <u>SEE NOTE 3</u>	
NPS DESIGNS INC. NEW YORK, N.Y.		LITSEY & COMPANY, INC. INDIANA & MICHIGAN ELECTRIC CO. DONALD C. COOK NUCLEAR PLANT	
FABRICATOR NOTE: FABRICATION MUST CONFORM TO LATEST A.E.P. ARRGT. DWGS.		DWGN. <u>5G</u> CKD. <u>LDB</u> ISSUED _____ REF. DWG. <u>2-5487A</u>	DATE <u>2/27/71</u> DATE <u>3/1/71</u> CONTAIN. VICINITY DWG. NO. <u>2-NSW-111</u> <u>SH. 1 OF 2.</u>
			REV. _____ <u>2</u>

					ISO SHT. NO. 2116	
QSL	ITEM	QTY.	SIZE	MATERIAL DESCRIPTION	TAG NO. OR ASTM MAT'L	HEAT NO.
01	1	1	3"	125# C.I. WAFER BUTTERFLY VA.	IFW03 RS	
	2	1	3"	202# THRD. GLOBE VA. BRONZE	Y050T23	
	3	2	1/2"	3000# C.S. S.W. 90° ELL	A-181	
	4	2	1/2"	3000# C.S. S.W. PLUG.	GR. I OR II	
	5	4	5/8"	5" LG. HEX. ND. MACH. BOLT.	A-307 GR. B.	
	6	4	5/8"	HEAVY HEX. NUT. CL. 2 TOL.	↓	
	7	2	3"	1/8" THK. SPIRAL WOUND STYLE CG. C.S. COMP. RING GASKET.	TYPE 304	
	8	8	3/4"	4 1/2 LG. STUD BOLT	A-193 GR. B7	
	9	16	3/4"	HEAVY HEX. NUT	A-194 GR. 2H.	
	10	A3 REQD	1/2"	PIPE (SCH. 80) SMLS. C.S.	A-106 GR. B.	
	11	1	1"	PLUG THR'D 3000# C.S.	A-181 Gr. I or II	
01	13	1	1"	200# THR'D GLOBE VA. BRONZE BODY	Y-100T23	
	14	A3 REQD	1"	PIPE (SCH. 80) SMLS. C.S.	A-106 Gr. B	
	15	1	1/2"	3000# CAP. THR'D., C.S.	A-181 GR. I OR II	

REVISION RECORD				
FN.O.	DATE	DR/CHK	DESCRIPTION	REMARK
1	12-30-76	WJ	ADDED: 1" VENT & ITEMS 11, 12, 13, 14 TO B/M	
2	7/1/89	EDM LB	TO REFLECT AS - FOUND CONDITIONS FOR REC-DC-12-3010. PER FWR #759 REV. 1, DELETED: 1/2" PLUG & ITEM NO. 12 ON B/M. ADDED: SUPPORT MARK NOS. & SUPERSEDES HGR. 150. # 2-GNSW-111SH. # 1, ADDED: 1/2" CAP & ITEM NO. 15 ON B/M TO SUIT	NO FIELD ACTION REQ'D.

2NSW-111 (sheet 1 of 2)
Upper Containment Ventilation
Unit 1 Supply Line

D-23A