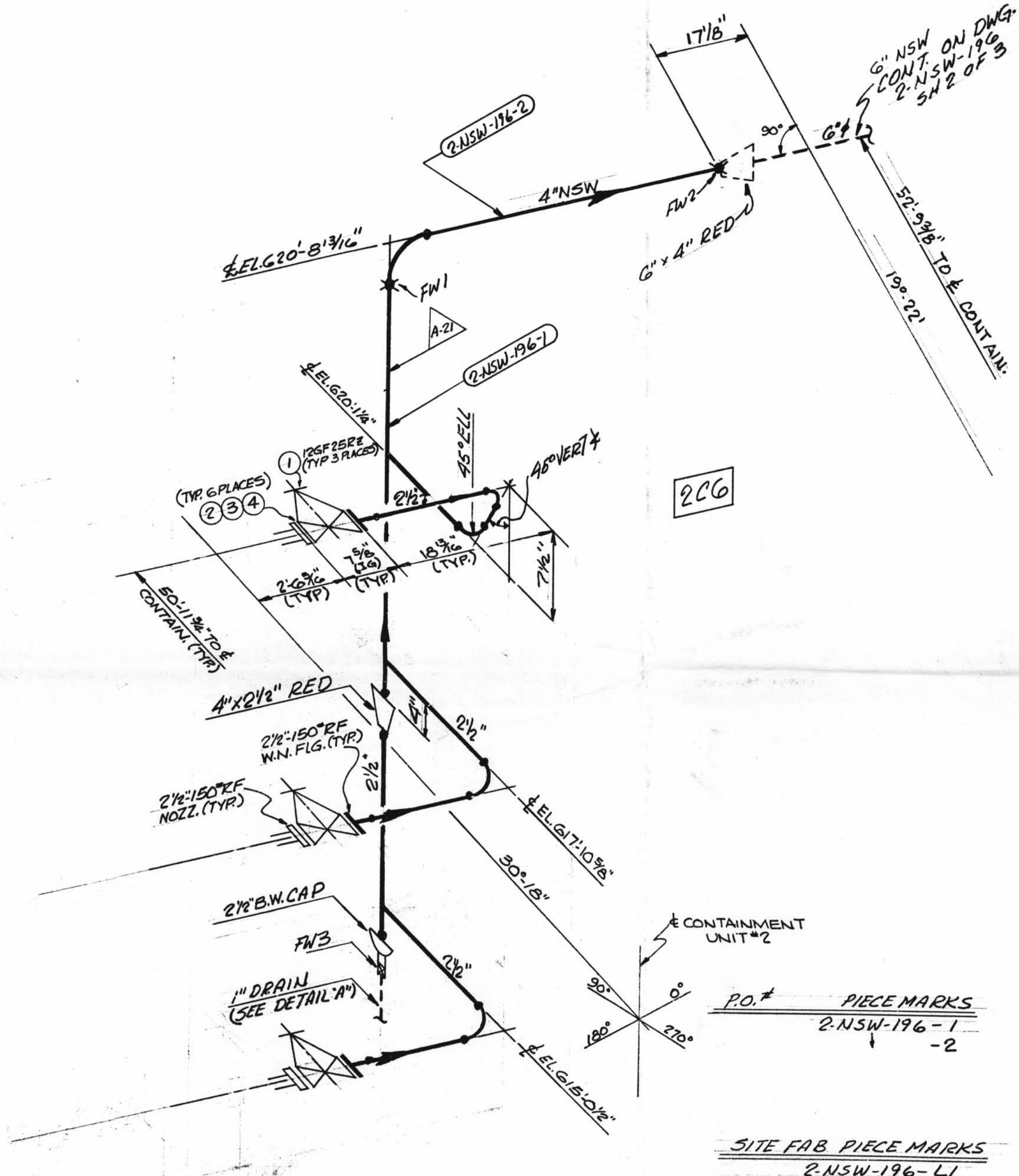
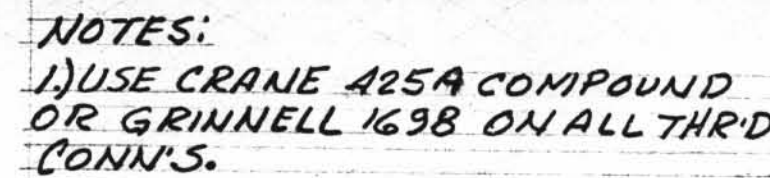


A diagram of a figure-eight knot, which is a closed curve that crosses itself exactly once. The central region of the knot is shaded with diagonal lines. A small 'N' is located at the top left of the diagram.



REVISION RECORD			
NO.	DATE		DESCRIPTION

D-12A

**2-NSW-196 (Sheet 1 of 3)**  
**Lower Containment Ventilation**  
**Unit 1 Return Line**

SIZE	QUAN.	FW
4'	8	2
2½"	10	-
1"	1	1

DESIGN SPEC.		DCCPMID2QCS										S.P. = WORKING POINT T.O.E. = THREAD ONE END T.S.E. = THREAD BOTH ENDS B.S.E. = BEVEL ONE END T.O.P. = TOP OF PIPE LEVEL O.Q.L. = MATERIAL QUALITY REQUIREMENTS T.L. = TRUE LENGTH										B.S.E. = BEVEL BOTH ENDS P.S.E. = PLAIN ONE END F.S.E. = FLAIN BOTH ENDS S.O.E. = SHAPE ONE END B.O.P. = BOTTOM OF PIPE LEVEL										FW = FIELD WELD H = HORIZONTAL V = VERTICAL SW = SHOP WELD FSW = FIELD SHOP WELD										B = FIELD WELD D = AUTOMATIC SHOP WELD M = MANUAL SHOP WELD VS = VERIFY DIMENSION IN FIELD													
HANGER SEISMIC CLASS		JF																																																					
TEST REQUIREMENTS		N/A																																																					
MATERIAL CLASS		A-21 SPEC. 104																																																					
PIPE																										FITTINGS						TESTING						ADDITIONAL																	
A-53		A-106		A-376		A-312								A-105		A-182		N.D.T.		NIA																																			
G.R.B.																																M.T.						P.T.						R.T.						U.T.					
STD.	XY	XXY	10	20	30	40	60	80	100	120	140	160																																											
						X								A-403		A-181		PRESSURE TEST																																					
SMLS		WLDD																MED.						PRESS.						DURATION																									

POUR/ZONE No. <u>226</u>		FLOW DIAGRAM <u>2-514A</u>		
REQUIRED COMPLETION DATE _____		O.S.I. <u>01</u>		
FABRICATED BY <u>TUBECO</u>		WELD PROCEDURE _____		
NPS DESIGNS INC. NEW YORK, N.Y.		LIVSEY & COMPANY, INC.		
		INDIANA & MICHIGAN ELECTRIC CO. DONALD C. COOK NUCLEAR PLANT		
FABRICATOR NOTE: FABRICATION MUST CONFORM TO LATEST A.E.P. ARRGT. DWGS.		DWN: <u>N/P</u>	DATE: <u>8-23-73</u>	CONTRIN. BLDG# <u>2</u>
		CRD: <u>AA</u>	DATE: <u>6-27-73</u>	DWG. NO. _____
		ISSUED _____	2-NSW-196	
		REF. DWG. <u>8-5492</u>	5H 10F 3	
				REV. _____