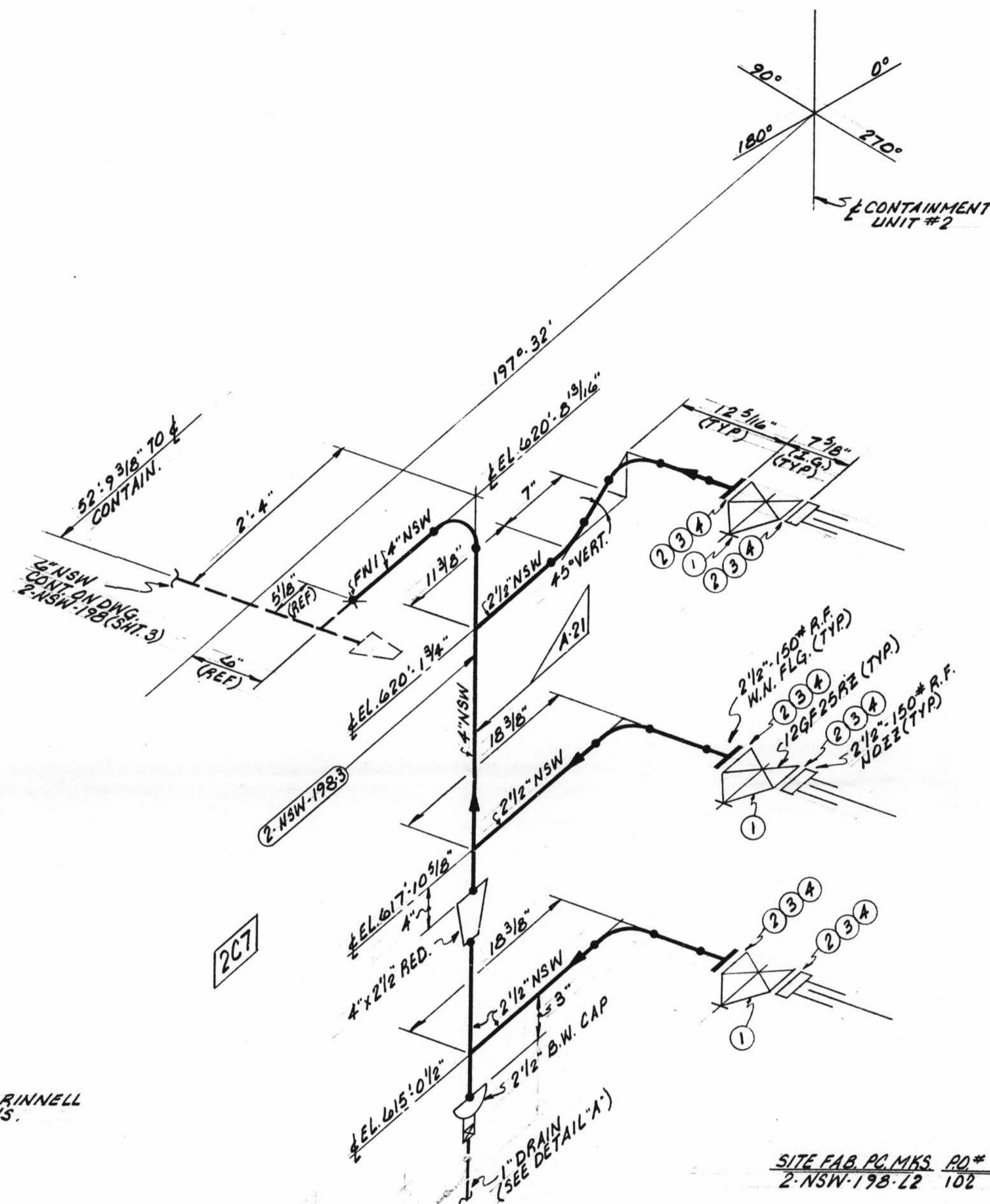
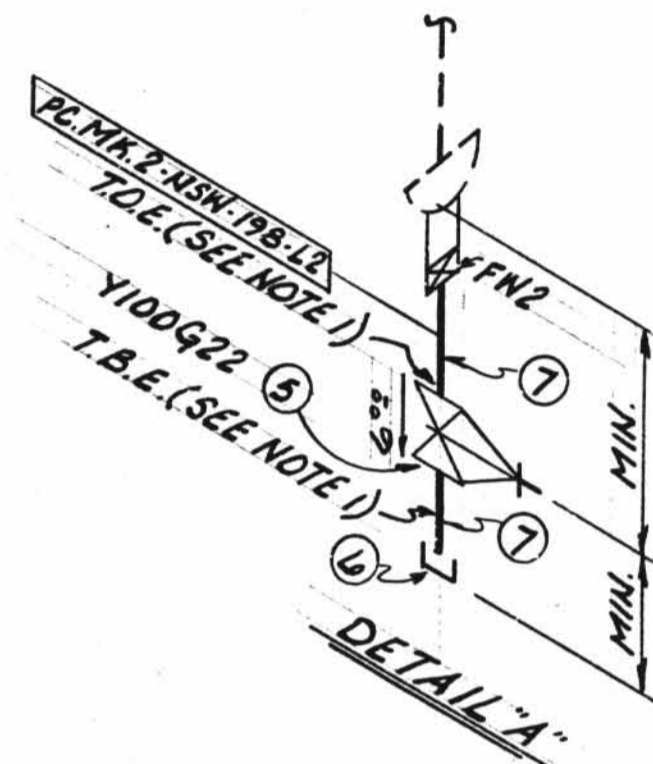


A diagram of a figure-eight knot, which is a closed loop that crosses itself exactly twice. In this diagram, the crossing in the upper-left quadrant is shaded with diagonal lines. A label 'N' is placed near the top-left end of the loop.



1) USE CRANE 425-A COMPOUND OR GRINNELL 1698 ON ALL THREADED CONNECTIONS.

SIZE	QUAN.	FW
4"	5'	1
2 1/2"	11'	-
1"	1'	1

DESIGN SPEC. <u>DCCPM102Q63</u>		S.P. = WORKING POINT T.O.E. = THREAD ONE END T.O.P. = THREAD BOTH ENDS B.O.E. = BEVEL ONE END T.O.P. = TOP OF PIPE ELEV G.S.L. = MATERIAL QUALITY REQUIREMENTS T.L. = TRUE LENGTH		B.R.E. = BEVEL BOTH ENDS P.O.E. = PLAIN ONE END P.B.E. = PLAIN BOTH ENDS S.O.E. = SHAPE ONE END S.O.P. = BOTTOM OF PIPE ELEV.		F.W. = FIELD WELD N = NONORIENTAL V = VERTICAL S = SHOP WELD F.S.W. = FIELD SHOP WELD		S = FIELD WELD A = AUTOMATIC SHOP WELD M = MANUAL SHOP WELD V = VERIFY DIMENSION IN FIELD					
HANGER SEISMIC CLASS <u>II</u>													
TEST REQUIREMENTS <u>N/A</u>													
MATERIAL CLASS <u>A-21 SPEC.104</u>													
PIPE													
A-53	A-106	A-376	A-312										
<u>GR.B</u>													
STD.	XY	XXY	10	20	30	40	60	80	100	120	140	160	
SMLS		WLD											
FITTINGS										TESTING			ADDITIONAL
A-105	A-234	A-182	N.D.T.		<u>N/A</u>								
			M.T.	P.T.	R.T.	U.T.							
A-403	A-181	PRESSURE TEST											
			MED.		PRESS.		DURATION						

[illegible][illegible]

D-14B

2-NSW-198 (Sheet 2 of 3)
Lower Containment Ventilation
Unit 3 Return Line

POUR/ZONE No. <u>2C7</u>	FLOW DIAGRAM <u>1-2-511A</u>
REQUIRED COMPLETION DATE _____	Q.S.I. <u>01</u>
FABRICATED BY <u>TUBECO</u>	WELD PROCEDURE _____

NPS DESIGNS INC. NEW YORK, N.Y.	LIVSEY & COMPANY, INC.	
	INDIANA & MICHIGAN ELECTRIC CO. DONALD C. COOK NUCLEAR PLANT	

FABRICATOR NOTE: FABRICATION MUST CONFORM TO LATEST A.E.P. ARRGT. DWGS.	DWN: <u>1/L</u>	DATE: <u>07/13</u>	CONTAINMENT #2	REV.
	CKD: <u>MM</u>	DATE: <u>6-28</u>		
	ISSUED		DWG. NO.	
	REF. DWG. <u>2-5692</u>		<u>2-N5W-198</u>	<u>SHT. 2 of 3</u>