

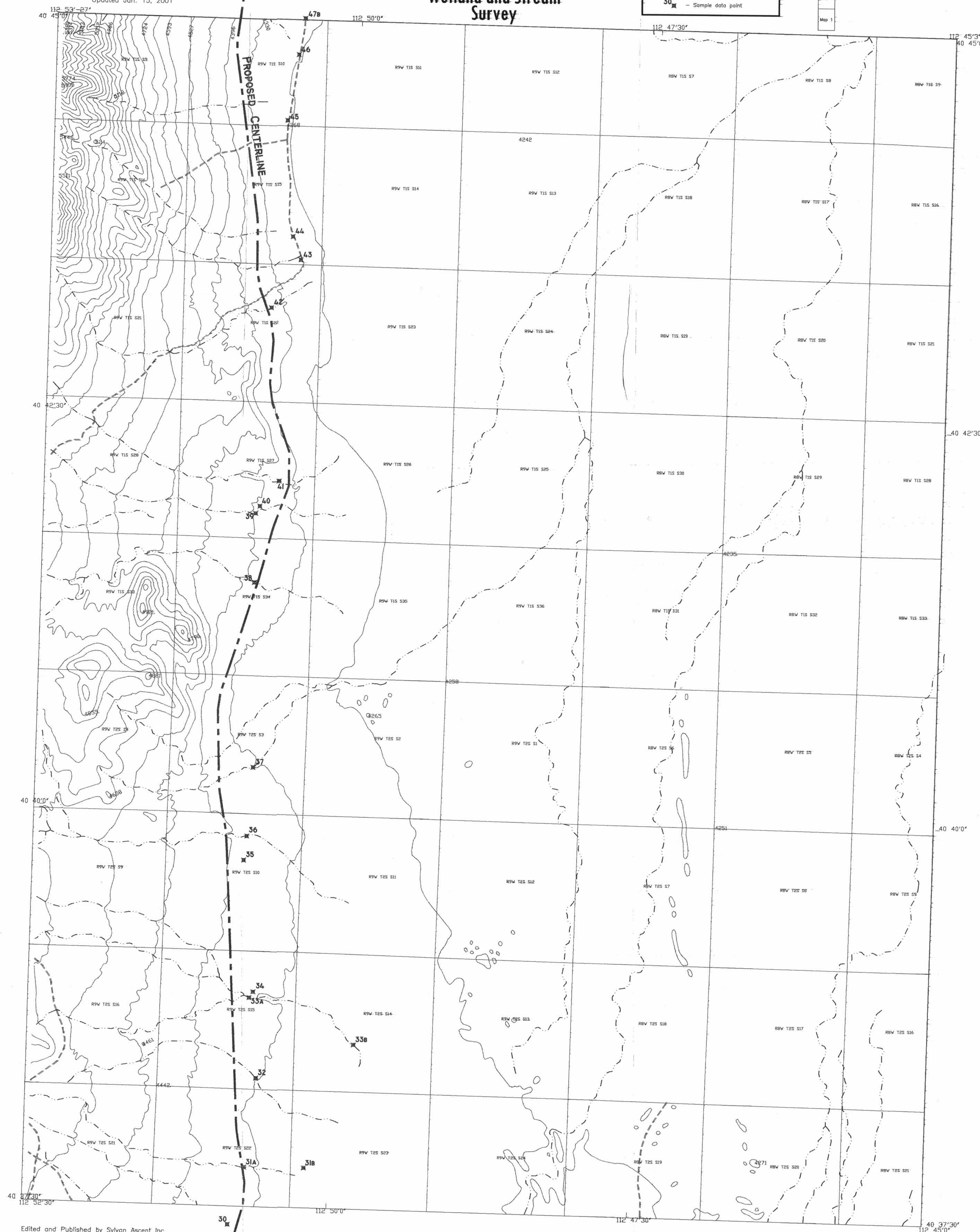
Prepared by: **Cirrus**  
Ecological Solutions L.C.  
Logan, Utah  
Date: December 7, 2000  
Updated Jan. 15, 2001

# GREAT SALT LAKE AND SOUTHERN RAILROAD Wetland and Stream Survey

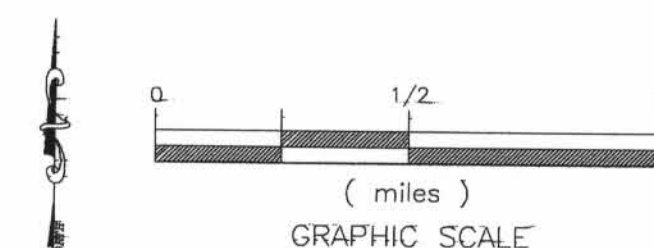
Legend:  
--- Proposed Railroad Centerline  
30' --- Sample data point

Map 3 of 5  
Map 3  
Map 2  
Map 1

MAP 3 OF 5



Edited and Published by Sylvan Ascent Inc.  
Transportation and Hydrography Source data from  
U.S. Census Bureau 100K 1995 Files  
Section Township Lines (PLSS) from 100K USGS DLG  
Feature Names from USGS Geographical Names Information  
System (GNIS) and other sources as specified for  
Map Accuracy is identical with that specified for  
Sylvan Ascent Inc. TopoDepot(tm) Documentation  
North American Datum of 1927  
Coordinate System: UTM 12  
Copyright 1998 Sylvan Ascent Inc. See your local  
Sylvan Ascent Inc. P.O. Box 4792 Santa Fe, NM 87502  
Topography from 100K USGS DLG Files. Elevation is in FEET.



HASTINGS PASS NE, QUAD.  
UTAH

D-3