

MAY 15 2001



LRN-01-0174

United States Nuclear Regulatory Commission
Document Control Desk
Washington, DC 20555

Gentlemen:

**CORE OPERATING LIMITS REPORT - CYCLE 15
SALEM GENERATING STATION UNIT NO. 1
FACILITY OPERATING LICENSE DPR-70
DOCKET NO. 50-272**

In accordance with section 6.9.1.9 of the Salem Unit 1 Technical Specifications, PSEG Nuclear LLC submits Revision 0 of the Core Operating Limits Report (COLR) for Salem Unit 1 Cycle 15 (NFS-0190, Rev. 0) in Attachment 1 to this letter.

Should you have any questions, please contact Mr. Paul Duke at (856) 339-1466.

Sincerely,

A handwritten signature in black ink, appearing to read "G. Salamon", with a long horizontal line extending to the right.

G. Salamon
Manager - Nuclear Safety & Licensing

Attachment

A001

MAY 1 5 2001

C Mr. H. J. Miller, Administrator - Region I
 U. S. Nuclear Regulatory Commission
 475 Allendale Road
 King of Prussia, PA 19406

 Mr. R. Fretz, Licensing Project Manager - Salem
 U. S. Nuclear Regulatory Commission
 One White Flint North
 11555 Rockville Pike
 Mail Stop 8B1
 Rockville, MD 20852

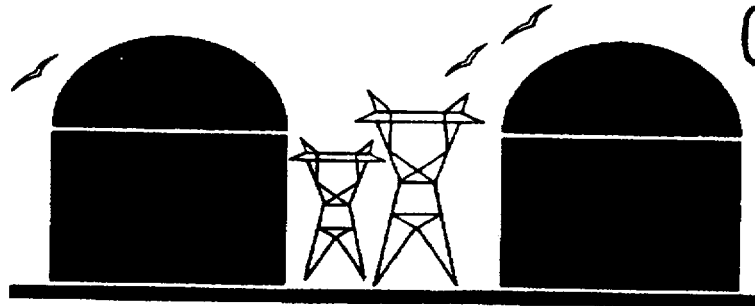
 USNRC Senior Resident Inspector - Salem (X24)

 Mr. K. Tosch, Manager IV
 Bureau of Nuclear Engineering
 PO Box 415
 Trenton, NJ 08625

NFS-0190
Revision 0
February 2001

Core Operating Limits Report for Salem Unit 1, Cycle 15

PSE&G
CONTROL
COPY # 0334



PREPARED: Joseph P. Dascanio
Joseph P. Dascanio
Engineer

DATE: 2/27/01

REVIEWED: Thomas R. Wathey
Thomas R. Wathey
Senior Engineer

DATE: 2/27/01

REVIEWED: Kent E. Halac
Kent E. Halac
Senior Engineer

DATE: 2/27/01

CONCURRENCE: Thomas K. Ross
Thomas K. Ross
Supervisor, SR&SA

DATE: 2/27/01

APPROVED: Thomas K. Ross for Michael M. Mannion
Michael M. Mannion
Manager, Nuclear Fuel

DATE: 2/27/01

TABLE OF CONTENTS

<u>Section Number</u>	<u>Section Title</u>	<u>Page Number</u>
	Table of Contents	2
	List of Figures	3
1.0	Core Operating Limits Report	4
2.0	Operating Limits	5
2.1	Moderator Temperature Coefficient (Specification 3/4.1.1.3)	5
2.2	Control Rod Insertion Limits (Specification 3/4.1.3.5)	6
2.3	Axial Flux Difference (Specification 3/4.2.1)	6
2.4	Heat Flux Hot Channel Factor – $F_q(z)$ (Specification 3/4.2.2)	6
2.5	Nuclear Enthalpy Rise Hot Channel Factor $F_{\Delta H}^N$ (Specification 3/4.2.3)	8
3.0	References	8

LIST OF FIGURES

<u>Figure Number</u>	<u>Figure Title</u>	<u>Page Number</u>
1	Rod Bank Insertion Limits vs. Thermal Power	9
2	Axial Flux Difference Limits as a Function of Rated Thermal Power	10
3	$K(z)$ – Normalized $F_q(z)$ as a Function of Core Height	11

1.0 CORE OPERATING LIMITS REPORT

This Core Operating Limits Report (COLR) for Salem Unit 1 Cycle 15 has been prepared in accordance with the requirements of Technical Specification 6.9.1.9.

The Technical Specifications affected by this report are listed below:

- 3/4.1.1.3 Moderator Temperature Coefficient
- 3/4.1.3.5 Control Rod Insertion Limits
- 3/4.2.1 Axial Flux Difference
- 3/4.2.2 Heat Flux Hot Channel Factor - $F_Q(Z)$
- 3/4.2.3 Nuclear Enthalpy Rise Hot Channel Factor - $F_{\Delta H}^N$

2.0 OPERATING LIMITS

The cycle-specific parameter limits for the specifications listed in Section 1.0 are presented in the following subsections. These limits have been developed using the NRC-approved methodologies specified in Technical Specification 6.9.1.9.

2.1 Moderator Temperature Coefficient (Specification 3/4.1.1.3)

2.1.1 The Moderator Temperature Coefficient (MTC) limits are:

The BOL/ARO/HZP-MTC shall be less positive than $0 \Delta k/k/^{\circ}F$.

The EOL/ARO/RTP-MTC shall be less negative than $-4.5 \times 10^{-4} \Delta k/k/^{\circ}F$.

2.1.2 The MTC Surveillance limit is:

The 300 ppm/ARO/RTP-MTC should be less negative than or equal to $-3.8 \times 10^{-4} \Delta k/k/^{\circ}F$.

where: BOL stands for Beginning of Cycle Life

ARO stands for All Rods Out

HZP stands for Hot Zero THERMAL POWER

EOL stands for End of Cycle Life

RTP stands for Rated THERMAL POWER

2.2 Control Rod Insertion Limits (Specification 3/4.1.3.5)

2.2.1 The control rod banks shall be limited in physical insertion as shown in Figure 1.

2.3 Axial Flux Difference (Specification 3/4.2.1)

[Constant Axial Offset Control (CAOC) Methodology]

2.3.1 The Axial Flux Difference (AFD) target band is +6%, -9%.

2.3.2 The AFD Acceptable Operation Limits are provided in Figure 2.

2.4 Heat Flux Hot Channel Factor - $F_Q(Z)$ (Specification 3/4.2.2)

[F_{xy} Methodology]

$$F_Q(Z) \leq \frac{F_Q^{RTP}}{P} * K(Z) \text{ for } P > 0.5$$

$$F_Q(Z) \leq \frac{F_Q^{RTP}}{0.5} * K(Z) \text{ for } P \leq 0.5$$

$$\text{where: } P = \frac{\text{THERMAL POWER}}{\text{RATED THERMAL POWER}}$$

$$2.4.1 \quad F_Q^{RTP} = 2.40$$

2.4.2 $K(Z)$ is provided in Figure 3.

$$2.4.3 \quad F_{xy}^L = F_{xy}^{RTP} [1.0 + PF_{xy}(1.0 - P)]$$

where: $F_{xy}^{RTP} = 1.79$ for the unrodded core planes

2.13 for the core plane containing Bank D control rods

$$PF_{xy} = 0.3$$

- 2.4.4 If the Power Distribution Monitoring System (PDMS) is used for core power distribution surveillance and is OPERABLE, as defined in Technical Specification 3.3.3.14, the uncertainty, U_{FQ} , to be applied to the Heat Flux Hot Channel Factor $F_Q(z)$ shall be calculated by the following formula:

$$U_{FQ} = \left(1.0 + \frac{U_Q}{100.0} \right) \bullet U_e$$

where:

U_Q = Uncertainty for power peaking factor as defined in equation 5-19 of Reference 1.

U_e = Engineering uncertainty factor.
= 1.03

Note: U_{FQ} = PDMS Surveillance Report Core Monitor Fxy Uncertainty in %.

- 2.4.5 If the INCORE movable detectors are used for core power distribution surveillance, the uncertainty, U_{FQ} , to be applied to the Heat Flux Hot Channel Factor $F_Q(z)$ shall be calculated by the following formula:

$$U_{FQ} = U_{qu} \bullet U_e$$

where:

U_{qu} = Base F_Q measurement uncertainty.
= 1.05

U_e = Engineering uncertainty factor.
= 1.03

2.5 Nuclear Enthalpy Rise Hot Channel Factor - $F_{\Delta H}^N$ (Specification 3/4.2.3)

$$F_{\Delta H}^N = F_{\Delta H}^{RTP} [1.0 + PF_{\Delta H} (1.0 - P)]$$

where: $P = \frac{\text{THERMAL POWER}}{\text{RATED THERMAL POWER}}$

2.5.1 If RTP = 3411 MWt; then,

$$F_{\Delta H}^{RTP} = 1.65$$

If RTP > 3411 MWt and RTP ≤ 3459 MWt; then,

$$F_{\Delta H}^{RTP}(\text{RFA with IFM}) = 1.65 \text{ and } F_{\Delta H}^{RTP}(\text{V5H without IFM}) = 1.57$$

2.5.2 $PF_{\Delta H} = 0.3$

2.5.3 If the Power Distribution Monitoring System (PDMS) is used for core power distribution surveillance and is OPERABLE, as defined in Technical Specification 3.3.3.14, the uncertainty, U_{FAH} , to be applied to the Nuclear Enthalpy Rise Hot Channel Factor, $F_{\Delta H}^N$, shall be calculated by the following formula:

$$U_{FAH} = 1.0 + \frac{U_{\Delta H}}{100.0}$$

where:

$U_{\Delta H}$ = Uncertainty for enthalpy rise as defined in equation 5-19 of Reference 1.

2.5.4 If the INCORE movable detectors are used for core power distribution surveillance, the uncertainty, U_{FAH} , to be applied to the Nuclear Enthalpy Rise Hot Channel Factor $F_{\Delta H}^N$ shall be calculated by the following formula:

$$U_{FAH} = U_{FAHm}$$

where:

U_{FAHm} = Base $F_{\Delta H}$ measurement uncertainty.
= 1.04

3.0 REFERENCES

1. WCAP-12472-P-A, BEACON Core Monitoring and Operations Support System, August 1994.

FIGURE 1

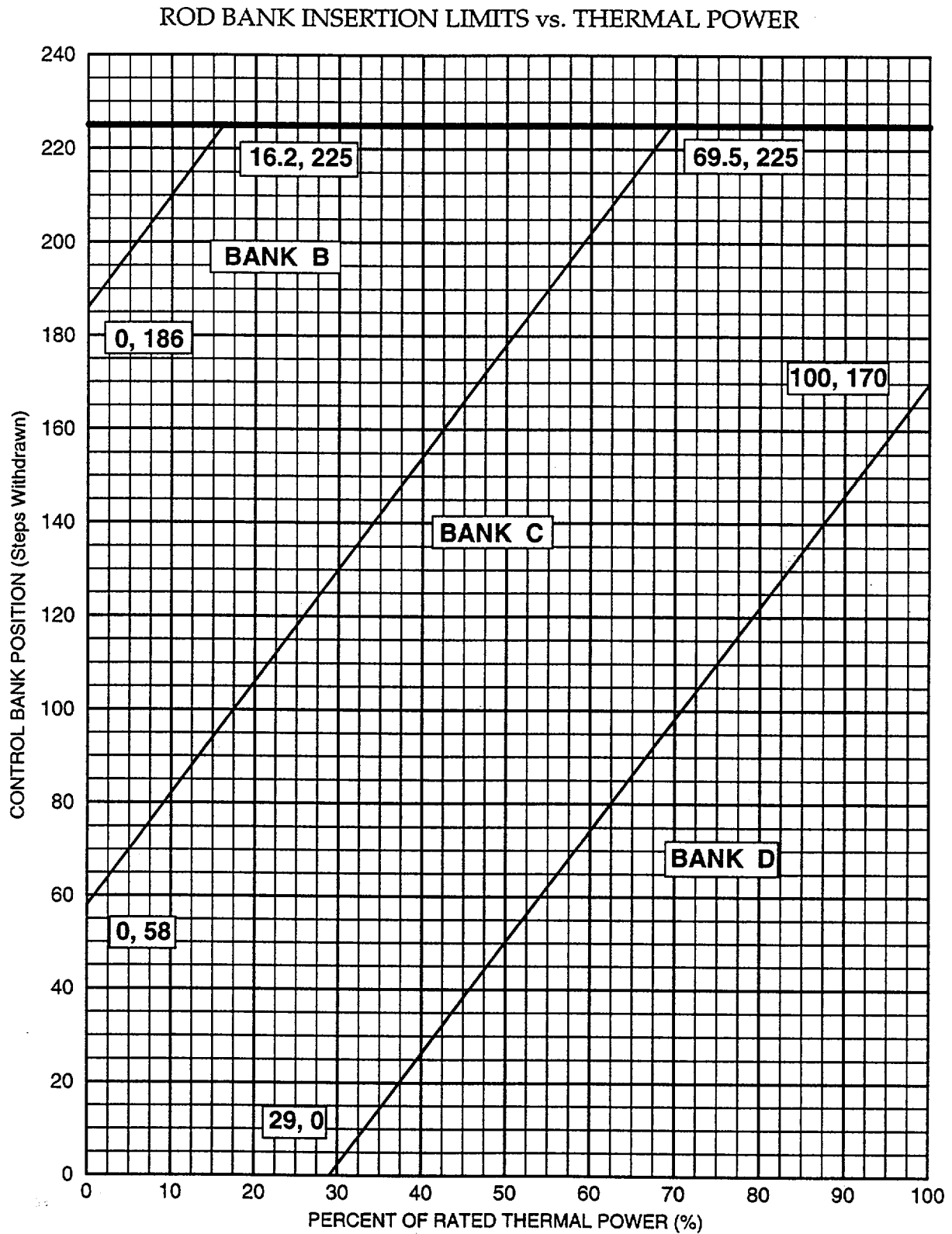


FIGURE 2

AXIAL FLUX DIFFERENCE LIMITS AS A FUNCTION OF
RATED THERMAL POWER

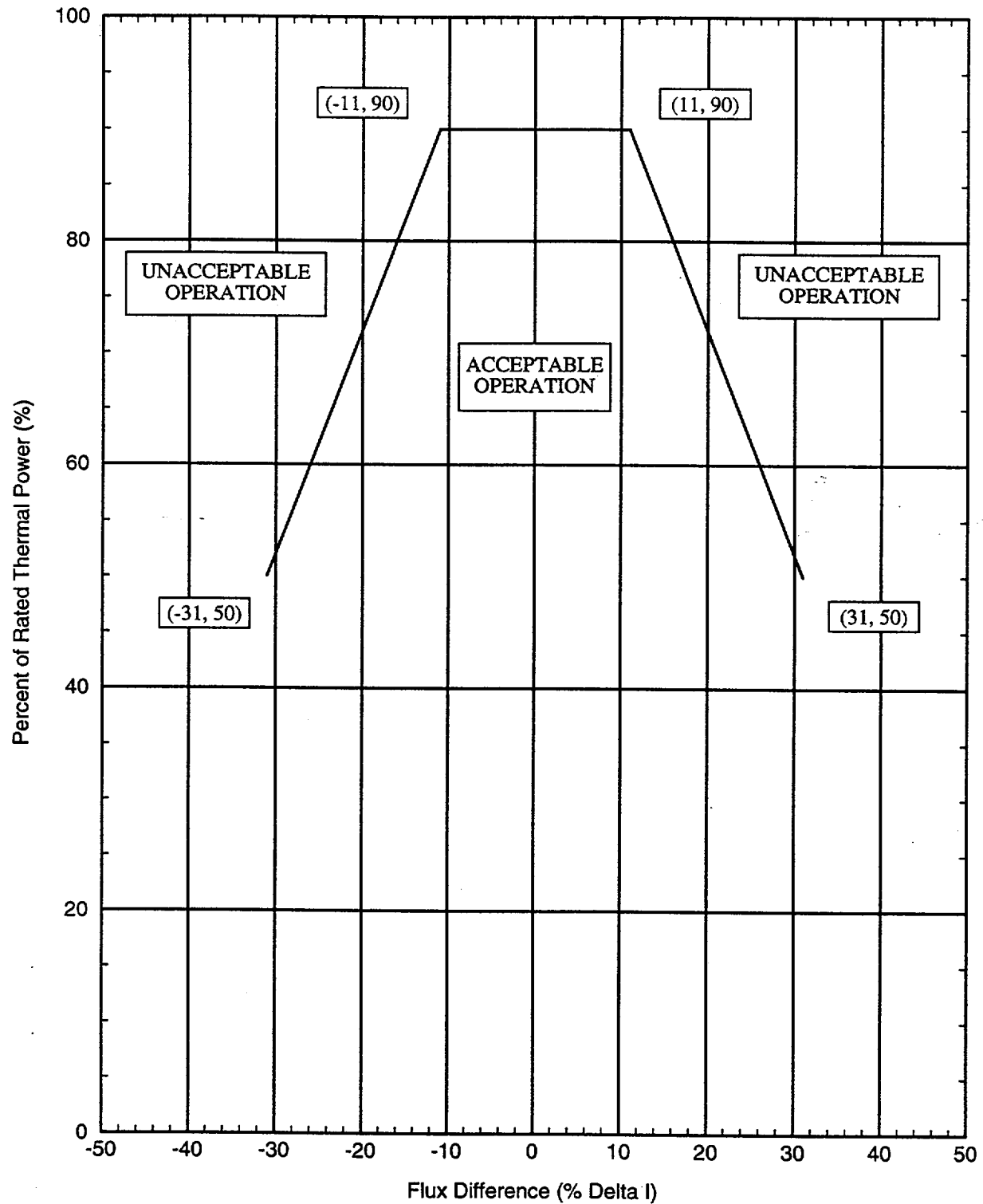


FIGURE 3

K(Z) - NORMALIZED FQ(Z) AS A FUNCTION OF CORE HEIGHT

