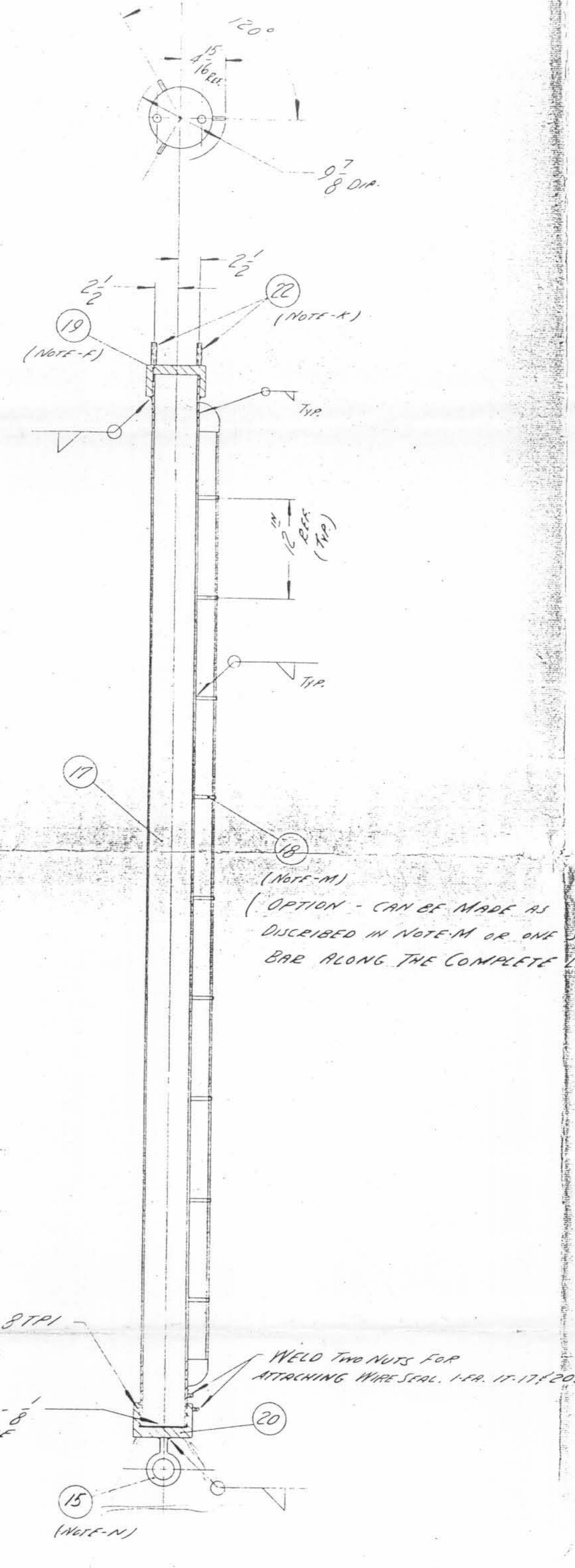
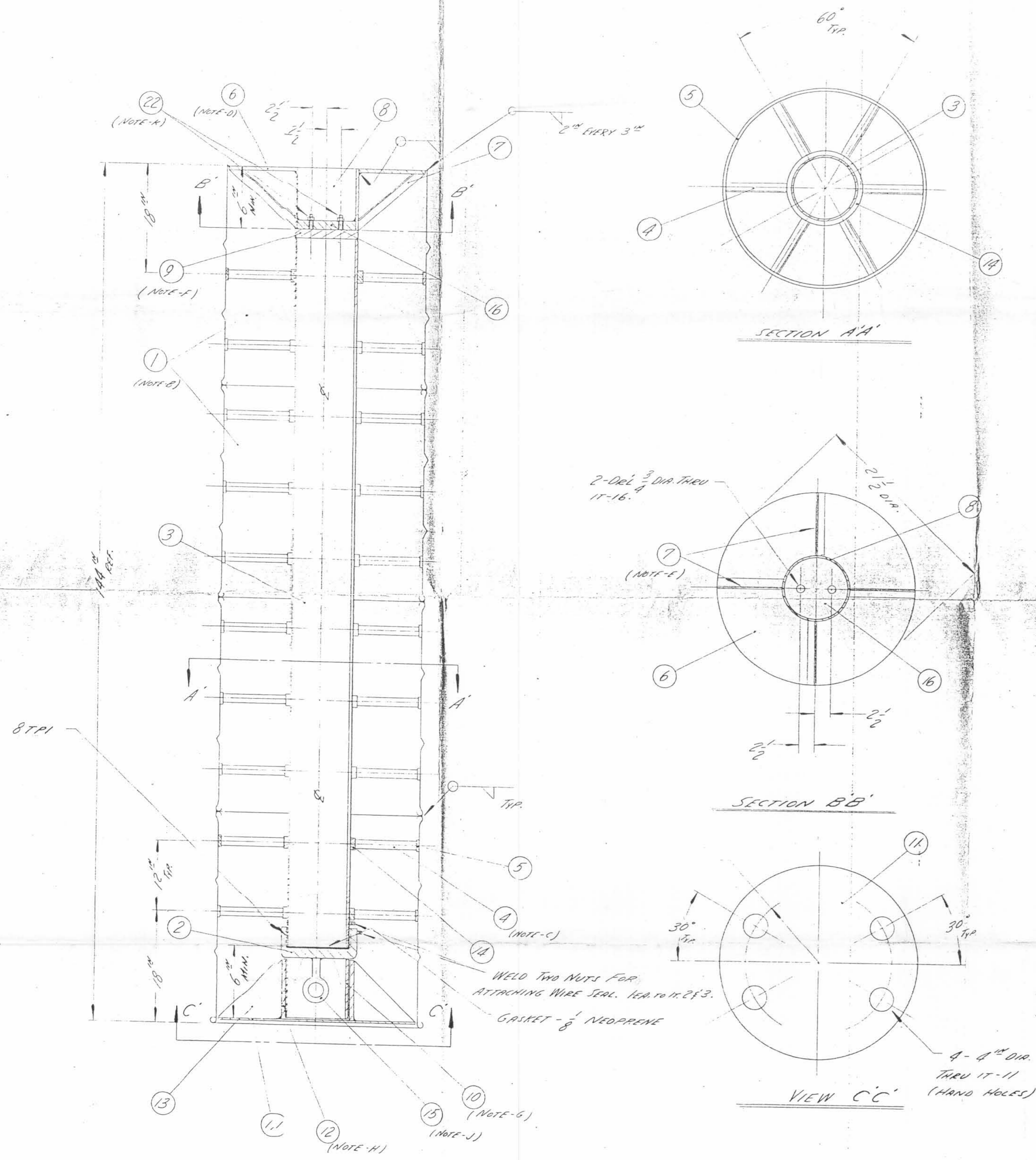


SNM-338 MAY 17, 1965

TITLE SHIPPING CONTAINER

DWG. C7730416 SUB. # 2		FINISH CHART									
SYM.	ITEM	DESCRIPTION - MATERIAL DIMENSIONS IN INCHES	PART NO. OR REF. NO.	QTY.	UNIT	SYM.	1	2	3	4	5
1	DRUM - STD 12" H. 55 GAL.			1	EA						
2	CAP - STD 10" DIA.			1	EA						
3	PIPE - 100" OF 10" SCHED 40			1	LF						
4	ANGLE - 1/4" X 1/4" X 3/16" LENGTH TO FIT			1	EA						
5	BAND - 3" X 1/4" THK. TO FIT			1	EA						
6	BRACE PLATE - 2 1/2" DIA. X 3/8" THK.			1	EA						
7	BRACING - 1/4" X 1/4" X 3/16" TO FIT			1	EA						
8	PIPE - 8" OF 10" SCHED 40			1	LF						
9	BRACE CAP - 1 1/2" OF 10 3/4" DIA.			1	EA						
10	PIPE - 8" OF 10" SCHED 40			1	LF						
11	TOP PLATE - 1/4" OF 22" DIA.			1	EA						
12	PIPE - 7 3/4" OF 12" SCHED 100			1	LF						
13	GUSSET - 1/4" OF 22" X 9"			1	EA						
14	INNER BAND - 2" OF 12" SCHED 100 PIPE			1	EA						
15	TEE BOLT - 1/2" DIA. 16" LG. 12" LG. OR EQUIV.			1	EA						
16	PLATE - 1 1/2" OF 10" DIA.			1	EA						
17	PIPE - 120" OF 5" SCHED 40			1	LF						
18	GUIDE STUDS - 1/2" DIA. TO FIT			1	EA						
19	CAP - 5" DIA. STD (MACHINED)			1	EA						
20	PIPE - 5" DIA. STD (MACHINED)			1	EA						
21	TEE BOLT - 1/2" DIA. 16" LG. 12" LG. OR EQUIV.			1	EA						
22	THICKENED STUDS - 2 1/2" OF 3/4" DIA.			1	EA						

Tp. To Fit



NOTE:
 A - ALL WELDS CONTINUOUS UNLESS SPECIFIED.
 B - DRUM EXTERIORS TO BE PAINTED YELLOW, INTERIORS TO BE FREE OF GRASS.
 C - WELD ITEM 4 TO ITEM 5 & 11A. WELD ITEM 5 TO INTERIOR OF DRUM. STAGGER WITH RESPECT TO ADJACENT RINGS.
 D - WELD ITEM 6 TO BOTTOM OF DRUM. TACK WELD 3 PLACES.
 E - WELD ITEM 7 TO ITS 6 1/8" AT SHOWN.
 F - WELD ITEM 9 TO ITEM 3 ALL AROUND. 17-19 TO 17-17 ALL AROUND.
 G - WELD ITEM 10 TO ITEM 2.
 H - WELD 17-12 TO 17-11 & 17-13 TO 17-12 1/2".
 J - WELD 17-15 TO 17-2.
 K - WELD 17-22 TO ITS 9 1/2".
 L - TACK WELD 17-18 TO 17-17 WITH 1/2" X 1/4" BAR WELDED TO TOPS OF 17-18.
 M - WELD 17-21 TO 17-20.

CHANGE	DATE	BY	REASON
1	10-11-64	J. J. B. / J. J. B.	10-11-64
2	10-11-64	J. J. B. / J. J. B.	10-11-64

TOLERANCE & MACHINING CHART TO BE USED UNLESS OTHERWISE SPECIFIED ON DWG.		WESTINGHOUSE ELECTRIC CORPORATION	
DIMENSIONS AS SPECIFIED	UNDER 4 IN. 4 IN. TO 12 IN. 12 IN. TO 24 IN. OVER 24 IN.	TITLE SHIPPING CONTAINER	
DECIMALS	+ .0001 + .0005 + .0010 + .0015	DFTM. J. JOHN / APPD. J. J. B.	
FRACTIONS (MACHINED)	+ 1/32 + 1/16 + 1/8 + 1/4	CHKD. / APPD.	
FRACTIONS (UNMACHINED)	+ 1/32 + 1/16 + 1/8 + 1/4	DIV. & PLANT LOCATION ATOMIC FUEL DEPT. - CHESWICK, PA.	
ANGLES ± 1° - 0°	UNLESS OTHERWISE SPECIFIED	FORM F-10-10A	
FINISH TO BE	DO NOT SCALE DWG.	C7730416	

D-1