

Table 1
North Anna Unit 1
Examination Coverage Estimates (Reactor Vessel 1-RC-R-1)
Category B-A, Item B1.11
Weld 4

BEAM DIRECTION	BEAM ANGLES							
	45° Shear Wave		60° Shear Wave		70° Refracted Longitudinal Wave		0°	
	Weld ¹ Coverage (%)	Volume ² Coverage (%)	Weld Coverage (%)	Volume Coverage (%)	Weld Coverage (%)	Volume Coverage (%)	Weld Coverage (%)	Volume Coverage (%)
Counter Clockwise	80.32	84.16	80.32	84.16	76.00	79.60		
Clockwise	80.32	84.16	80.32	84.16	76.00	79.60		
Up	79.00	80.63	79.00	80.61	79.00	79.00	83.20	82.36
Down	79.00	79.28	79.40	80.83	79.00	80.83		
Total Coverage per Beam Angle (%)	80.86		81.10		78.63		82.78	

Notes: 1) Weld refers to the weld material.

2) Volume refers to the required examination volume as defined in Figure IWB-2500-1 of the Code.

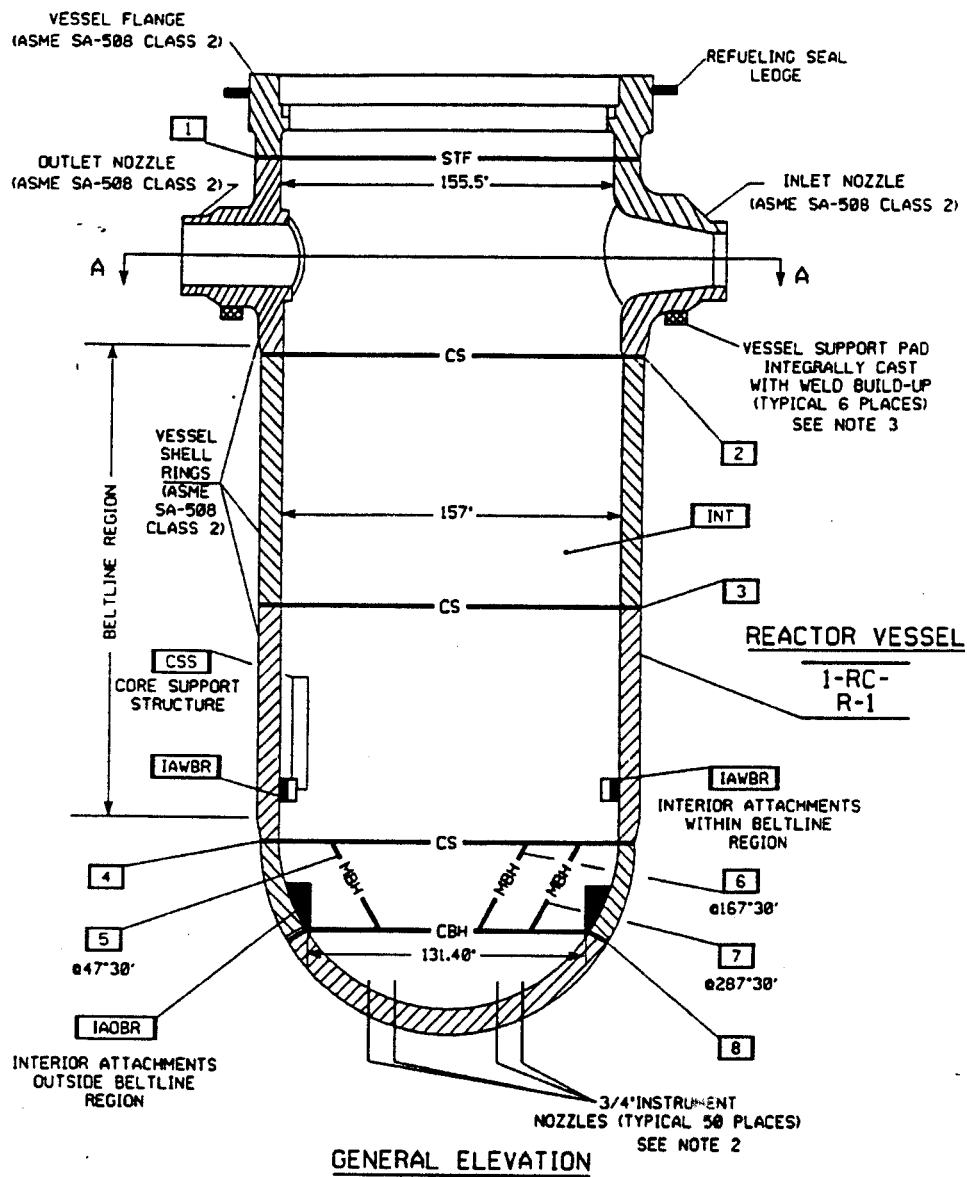
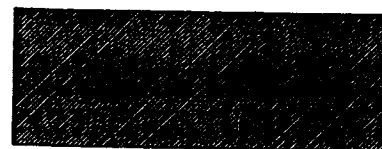
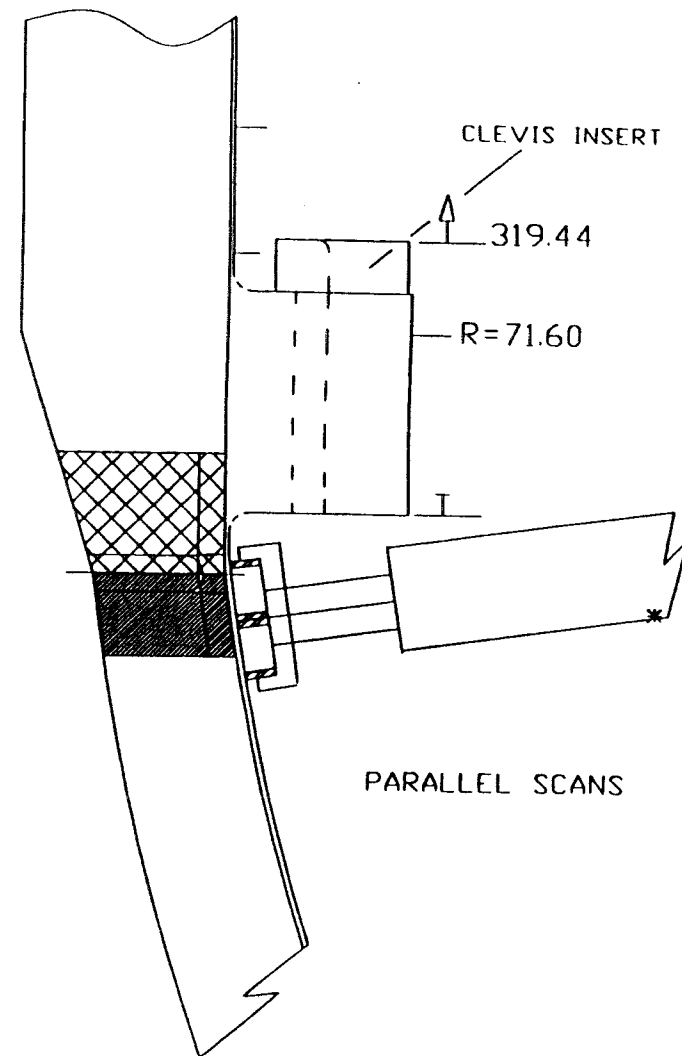
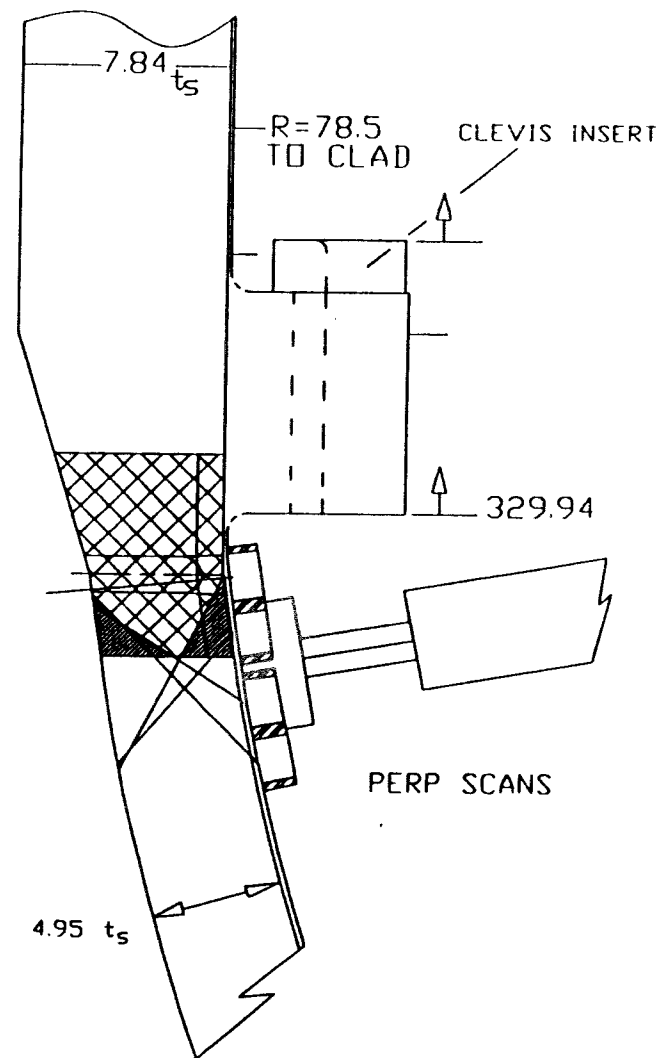
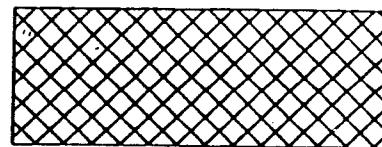


Figure 1
Reactor Vessel



AREA EXAMINED



AREA NOT EXAMINED

Figure 2
Weld 4 Coverage