



John S. Keenan  
Vice President  
Brunswick Nuclear Plant

MAY 07 2001

SERIAL: BSEP 01-0054

10 CFR 50.54(q)

U. S. Nuclear Regulatory Commission  
ATTN: Document Control Desk  
Washington, DC 20555-0001

BRUNSWICK STEAM ELECTRIC PLANT, UNIT NOS. 1 AND 2  
DOCKET NOS. 50-325 AND 50-324/LICENSE NOS. DPR-71 AND DPR-62  
REVISION TO PLANT EMERGENCY PROCEDURE

Gentlemen:

In accordance with 10 CFR 50.54(q) and 10 CFR 50, Appendix E, Section V, Carolina Power & Light (CP&L) Company is submitting Brunswick Steam Electric Plant (BSEP), Unit Nos. 1 and 2, plant emergency procedure OPEP-02.6.28, "Off-Site Protective Action Recommendations," Revision 7, which became effective on April 19, 2001. CP&L has evaluated the revision, in accordance with 10 CFR 50.54(q), and has determined that the changes do not decrease the effectiveness of the Radiological Emergency Response Plan; and the Plan, as changed, continues to meet the standards of 10 CFR 50.47(b) and the requirements of 10 CFR 50, Appendix E. A summary of the revision is provided in Enclosure 1. Enclosure 2 contains a copy of the revised procedure.

There are no regulatory commitments being made in this submittal. Please refer any questions regarding this submittal to Mr. Michael Alford, Supervisor - Emergency Preparedness, at (910) 457-2286.

Sincerely,

David C. DiCello  
Manager - Regulatory Affairs  
Brunswick Steam Electric Plant

A045

P.O. Box 10429  
Southport, NC 28461

T > 910.457.2496  
F > 910.457.2803

KMN/kmn

Enclosures:

1. Summary of Revision
2. Copy of Revised Procedure

cc (with enclosures):

U. S. Nuclear Regulatory Commission, Region II  
ATTN: Mr. Luis A. Reyes, Regional Administrator  
Sam Nunn Atlanta Federal Center  
61 Forsyth Street, SW, Suite 23T85  
Atlanta, GA 30303-8931

U. S. Nuclear Regulatory Commission  
ATTN: Mr. Theodore A. Easlick, NRC Senior Resident Inspector  
8470 River Road  
Southport, NC 28461-8869

U.S. Nuclear Regulatory Commission  
ATTN: Mr. Donnie J. Ashley (Mail Stop OWFN 8G9)  
11555 Rockville Pike  
Rockville, MD 20852-2738

cc (without enclosures):

Ms. Jo A. Sanford  
Chair - North Carolina Utilities Commission  
P.O. Box 29510  
Raleigh, NC 27626-0510

## ENCLOSURE 1

### BRUNSWICK STEAM ELECTRIC PLANT, UNIT NOS. 1 AND 2 DOCKET NOS. 50-325 AND 50-324/LICENSE NOS. DPR-71 AND DPR-62 REVISION TO PLANT EMERGENCY PROCEDURE

#### Summary of Revision

OPEP-02.6.28, "Off-Site Protective Action Recommendations," Revision 7:

1. Revised Section 2.0 to add a reference to NUREG-0654, Revision 1, Supplement 3;
2. Clarified instructions for making initial Protective Action Recommendations (PARs); and
3. Revised Attachment 1, "PAR Flowchart," to be consistent with NUREG-0654 guidance.

ENCLOSURE 2

BRUNSWICK STEAM ELECTRIC PLANT, UNIT NOS. 1 AND 2  
DOCKET NOS. 50-325 AND 50-324/LICENSE NOS. DPR-71 AND DPR-62  
REVISION TO PLANT EMERGENCY PROCEDURE

Copy of Revised Procedure

## PLANT OPERATING MANUAL

## VOLUME XIII

## PLANT EMERGENCY PROCEDURE

UNIT  
0

**OPEP-02.6.28*****OFF-SITE PROTECTIVE ACTION  
RECOMMENDATIONS***

REVISION 7

## TABLE OF CONTENTS

SECTION	PAGE
1.0 PURPOSE .....	3
2.0 REFERENCES .....	3
3.0 GENERAL .....	3
4.0 DEFINITIONS/ABBREVIATIONS .....	3
5.0 RESPONSIBILITIES .....	4
6.0 PROCEDURE .....	5
ATTACHMENTS	
1 PAR Flowchart .....	7
2 Evacuation Zones and Time Estimates/10 Mile EPZ Map .....	8

## **1.0 PURPOSE**

The purpose of this procedure is to describe the process for making Protective Action Recommendations (PARs) to off-site agencies.

## **2.0 REFERENCES**

- 2.1 OPEP-02.1.1, Emergency Control - Notification of Unusual Event, Alert, Site Area Emergency, and General Emergency
- 2.2 OPEP-02.6.26, Activation and Operation of the Technical Support Center (TSC)
- 2.3 OPEP-02.6.27, Activation and Operation of the Emergency Operations Facility (EOF)
- 2.4 OPEP-02.6.21, Emergency Communicator
- 2.5 OPEP-03.4.7, Automation of Off-Site Dose Projection
- 2.6 NUREG-0654 Rev. 1 Supp. 3, Criteria for Protective Action Recommendations for Severe Accidents

## **3.0 GENERAL**

- 3.1 Protective Action Recommendations (PARs) shall be made by the Emergency Response Manager in the EOF.
- 3.2 The Site Emergency Coordinator shall make Protective Action Recommendations, if necessary, prior to EOF activation.
- 3.3 This procedure provides the process for making Protective Action Recommendations within 15 minutes of a General Emergency declaration. PARs shall be transmitted to the decision makers on an approved Emergency Notification Form.
- 3.4 The Protective Action Recommendation is subject to acceptance or modification by state or county decision makers.
- 3.5 The State/Counties shall assume the responsibility for implementing protective actions taken to protect the health and safety of the general public.

## **4.0 DEFINITIONS/ABBREVIATIONS**

None

## **5.0 RESPONSIBILITIES**

### **5.1 The Emergency Response Manager shall:**

- 5.1.1 Use the guidance in this procedure to ensure Protective Action Recommendations are made within 15 minutes of the declaration of a General Emergency.
- 5.1.2 Verbally communicate this information to off-site decision makers.
- 5.1.3 Approve the Emergency Notification Form.
- 5.1.4 Maintain an awareness of the state/county acceptance or modification of the PARs.

### **5.2 The Site Emergency Coordinator shall:**

- 5.2.1 Prior to EOF activation:
  - 1. Use the guidance in this procedure to ensure Protective Action Recommendations are made within 15 minutes of the declaration of a General Emergency.
  - 2. Verbally communicate this information to off-site decision makers.
  - 3. Approve the Emergency Notification Form.
  - 4. Maintain an awareness of the state/county acceptance or modification of the recommended protective actions.

### **5.3 The Radiological Control Manager shall:**

- 5.3.1 Recommend PARs to the Emergency Response Manager.
- 5.3.2 Continually assess Dose Assessment results on radiological conditions and advise the Emergency Response Manager if the recommendations should be changed.
- 5.3.3 Immediately provide radiological and meteorological information to the Communications Manager for inclusion on the Emergency Notification Form.



**5.4 The Communications Manager, Communications Director, and Emergency Communicator (as applicable) shall:**

- 5.4.1 Ensure an Emergency Notification which includes the PAR is made to off-site agencies within 15 minutes.

**6.0 PROCEDURE**

- 6.1 Perform the following actions for making Protective Action Recommendations (PARs) when a General Emergency has been declared.

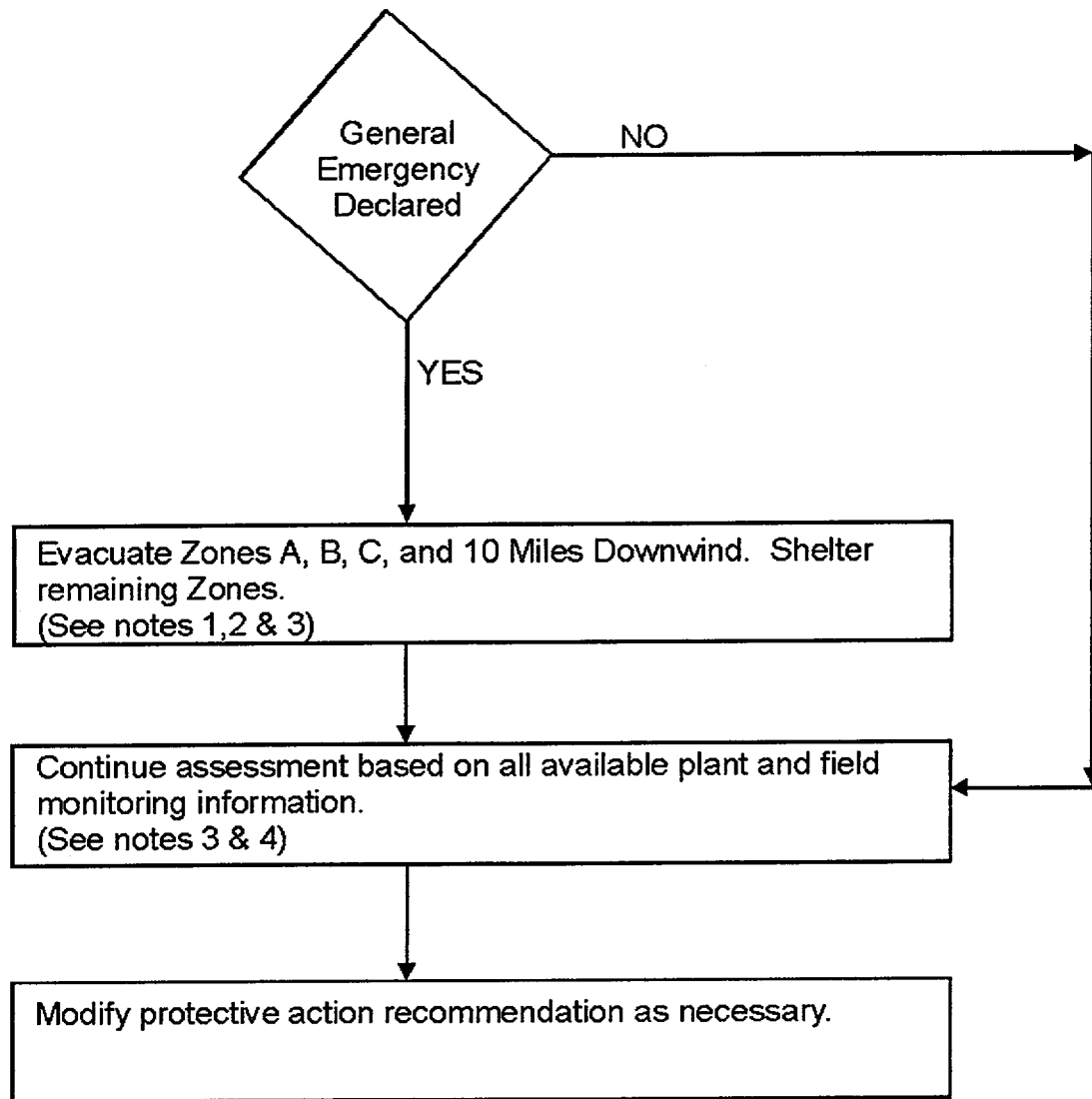
- 6.1.1 Obtain current wind direction.
- 6.1.2 Obtain release status based on plant conditions.
- 6.1.3 Use Attachments 1 and 2 to make initial PARs based on meteorological and plant conditions (i.e., Evacuate Zone A, B, C and 10 miles downwind zones. Shelter all remaining zones).
1. Protective Action Recommendations should be extended to the point (beyond the 10 mile EPZ, as necessary) where protective action guideline doses (i.e.,  $\geq 1$  Rem TEDE or  $\geq 5$  Rem CDE child thyroid) **WILL NOT** be exceeded.
- 6.1.4 Ensure Protective Action Recommendations are included on the Emergency Notification Form and issued within 15 minutes.
- 6.1.5 Brief the State Representatives in the EOF of the recommendations.
- 6.1.6 Contact off-site decision makers verbally.
1. Brunswick County
2. New Hanover County
3. State

## **6.0 PROCEDURE**

- 6.1.7 Ensure PARs are posted on status board in the EOF.
- 6.1.8 Continually work with the EOF State Representatives to ensure an understanding of off-site decisions.
- 6.1.9 Continually monitor changes in meteorological and radiological conditions and compare to EPA Protective Action Guides.

6.2 Review and revise the Protective Action Recommendation, as necessary.

ATTACHMENT 1  
Page 1 of 1  
PAR Flowchart

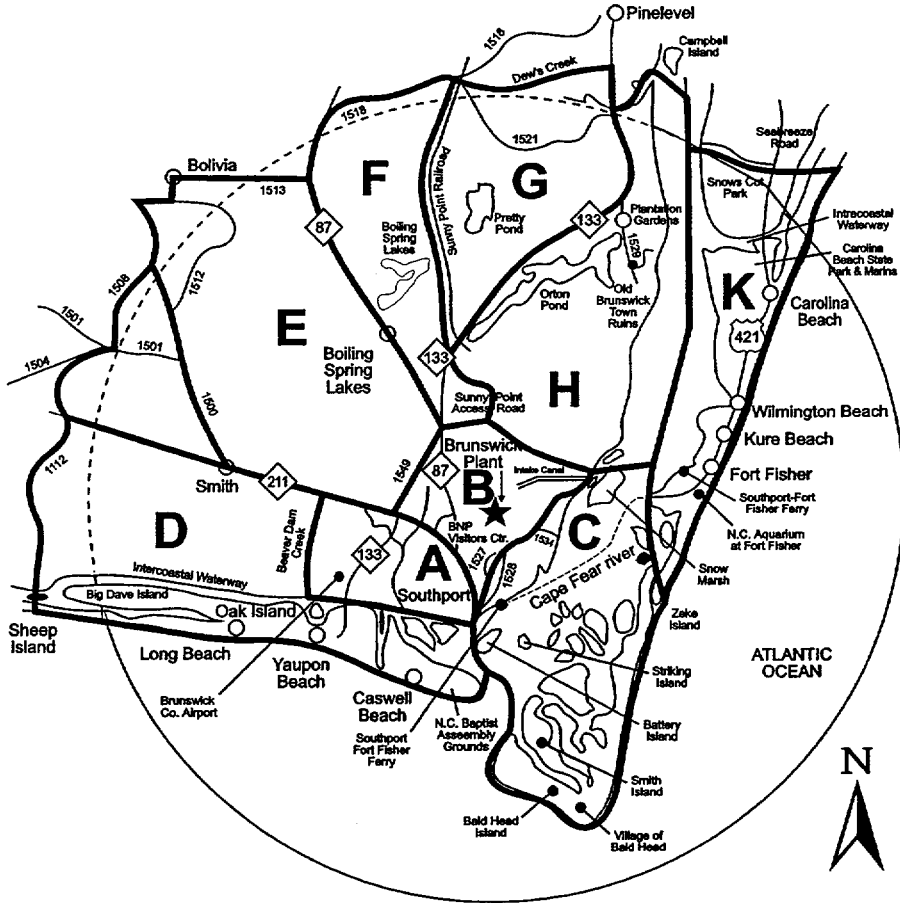


Notes:

1. Shelter remaining zones to have population indoors to monitor EAS broadcasts.
2. Shelter may be the appropriate action for controlled releases of radioactive material from containment IF there is assurance that the release is short term (puff release) and the area near the plant cannot be evacuated before the plume arrives.
3. For actual or projected doses  $\geq 1$  REM TEDE or  $\geq 5$  REM CDE (Thyroid), declare a General Emergency and recommend evacuation of general public from the affected areas.
4. Revise PAR if wind direction shifts or significant rad. condition changes are detected by field teams.

## Evacuation Zones and Time Estimates/10 Mile EPZ Map

WIND FROM	EVACUATE ZONES	SHELTER ZONES	EVACUATION TIMES (MINS) WINTER/SUMMER
NORTH (338 - 022)	A,B,C,D	E,F,G,H,K	220 TO 690
NORTHEAST (023 - 067)	A,B,C,D	E,F,G,H,K	220 TO 690
EAST (068 - 112)	A,B,C,D,E	F,G,H,K	230 TO 700
SOUTHEAST (113 - 157)	A,B,C,D,E,F,G,H	K	230 TO 700
SOUTH (158 - 202)	A,B,C,E,F,G,H,K	D	230 TO 700
SOUTHWEST (203 - 247)	A,B,C,G,H,K	D,E,F	210 TO 700
WEST (248 - 292)	A,B,C,H,K	D,E,F,G	210 TO 700
NORTHWEST (293 - 337)	A,B,C,K	D,E,F,G,H	190 TO 700
ALL ZONES IN 10 MILE EPZ	A,B,C,D,E,F,G,H,K		230 TO 700



## REVISION SUMMARY

Revision 7 of OPEP-02.6.28 consists of:

- Revised references list to include NUREG-0654, Rev. 1 Supp. 3.
- Revised procedure section to direct making initial PAR based on Plant Conditions, consistent with NUREG guidance.
- Modified PAR logic diagram to be consistent with NUREG guidance.