

Appendix D

LSN Object-Based Design

UML Diagrams

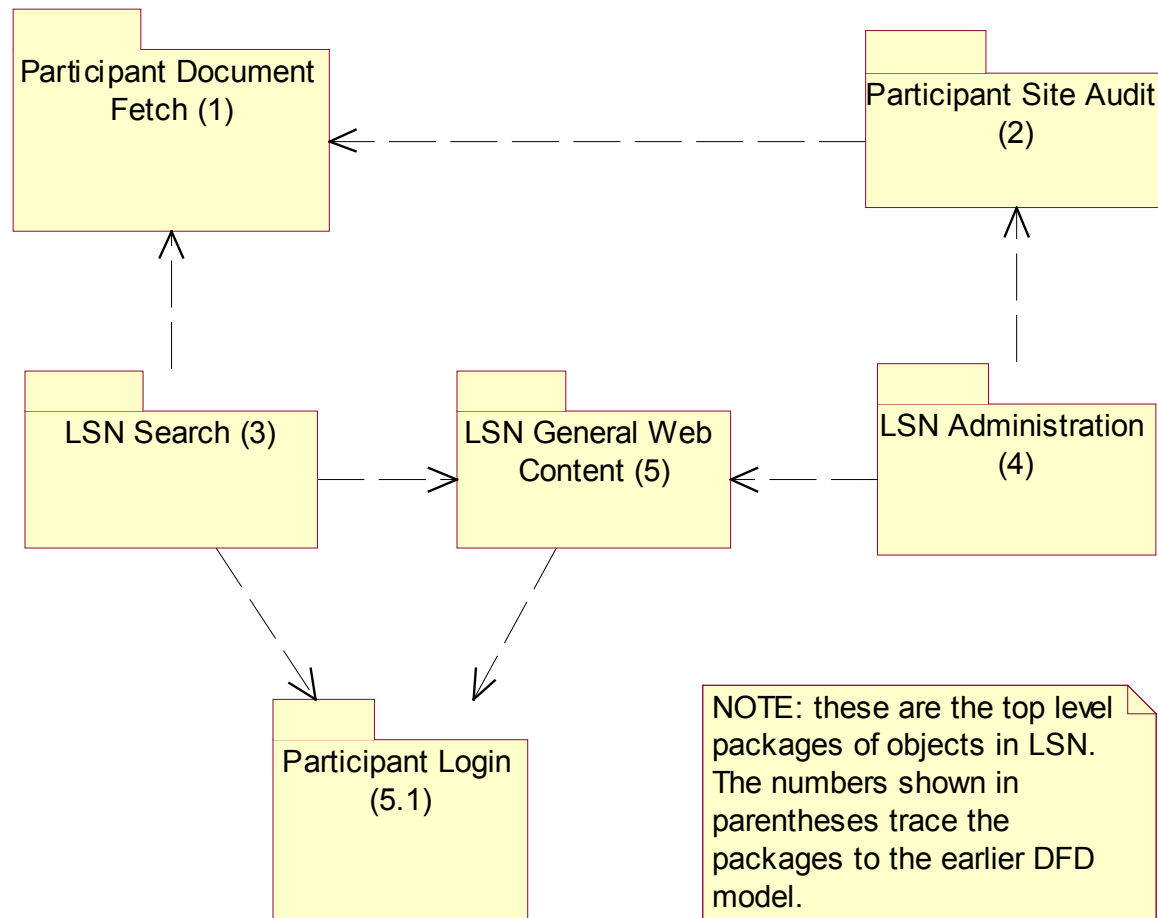


Figure 3-1: Top Level LSN Packages Diagram

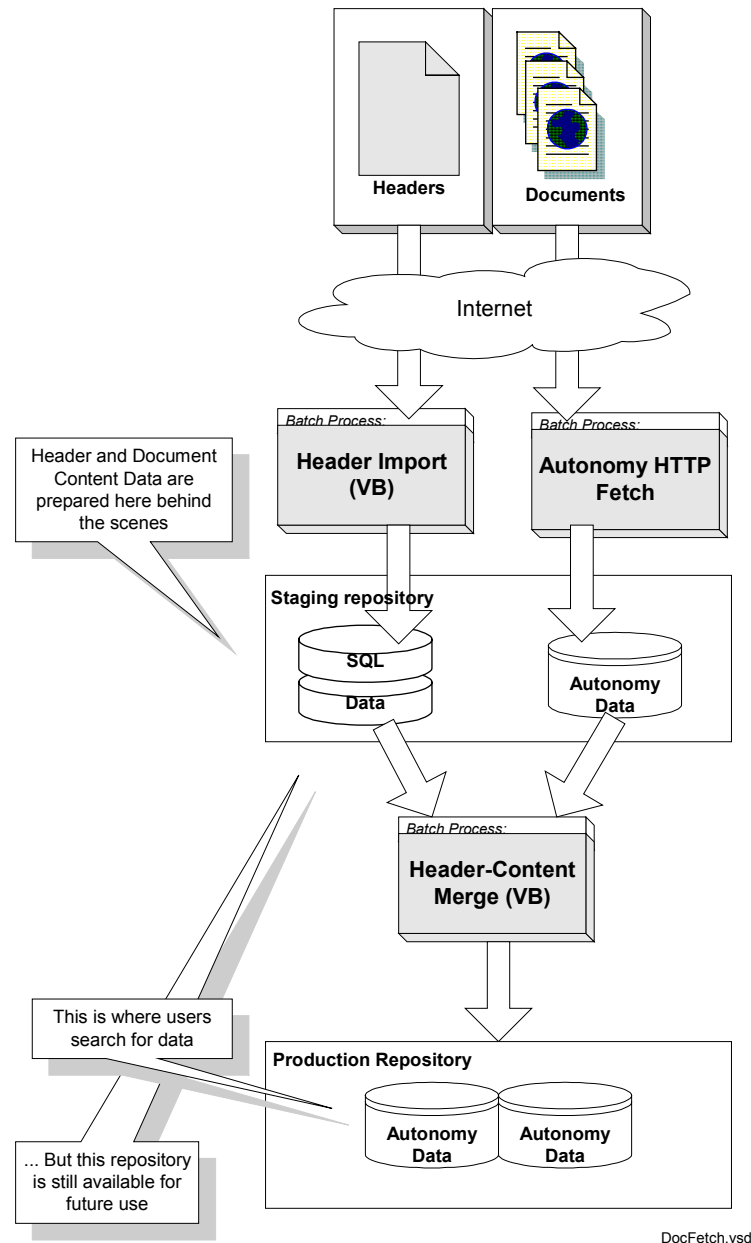


Figure 3.1-1: Participant Document Fetch, A Conceptual View

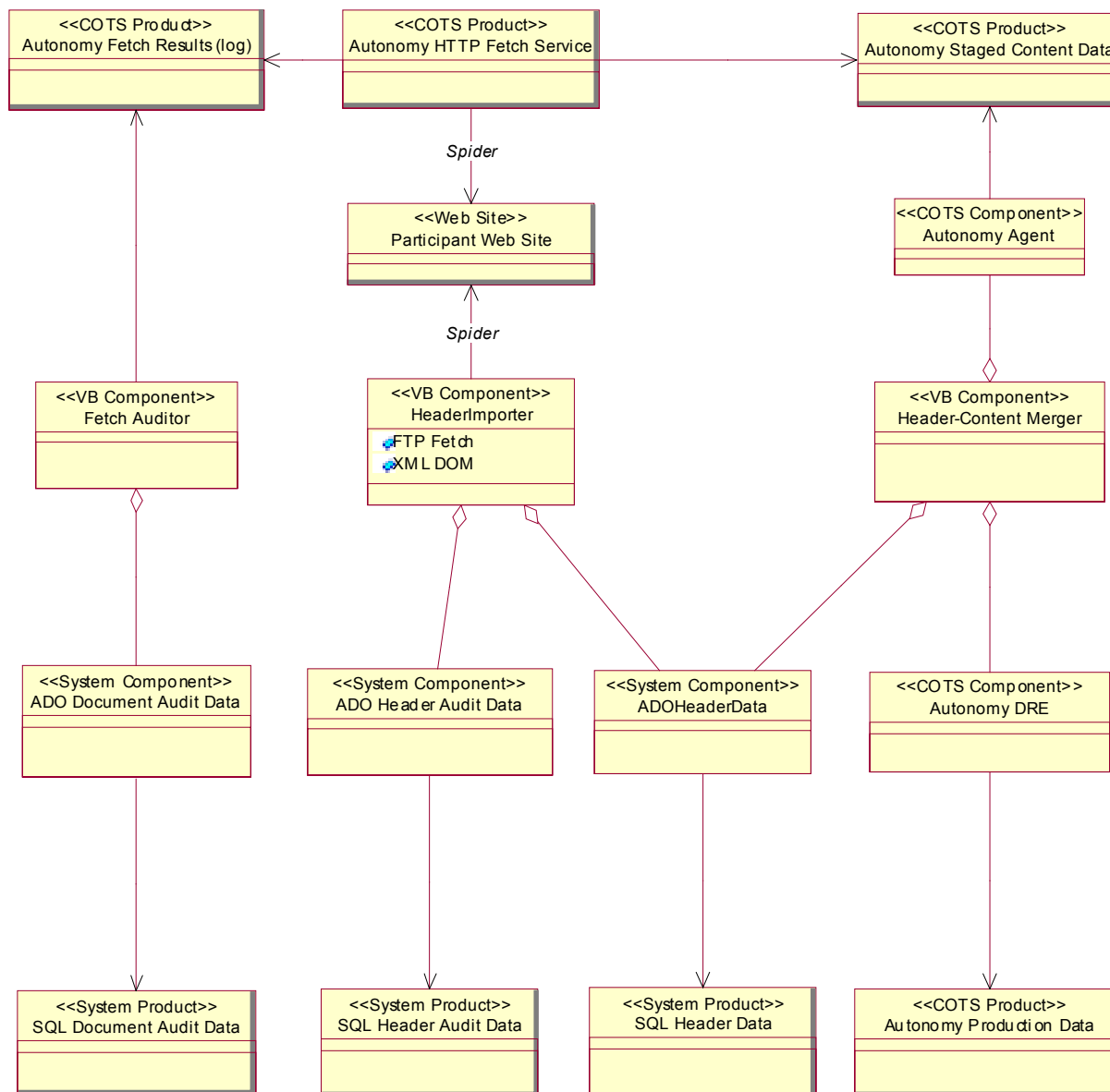


Figure 3.1.1-1: Participant Document Fetch Class Diagram

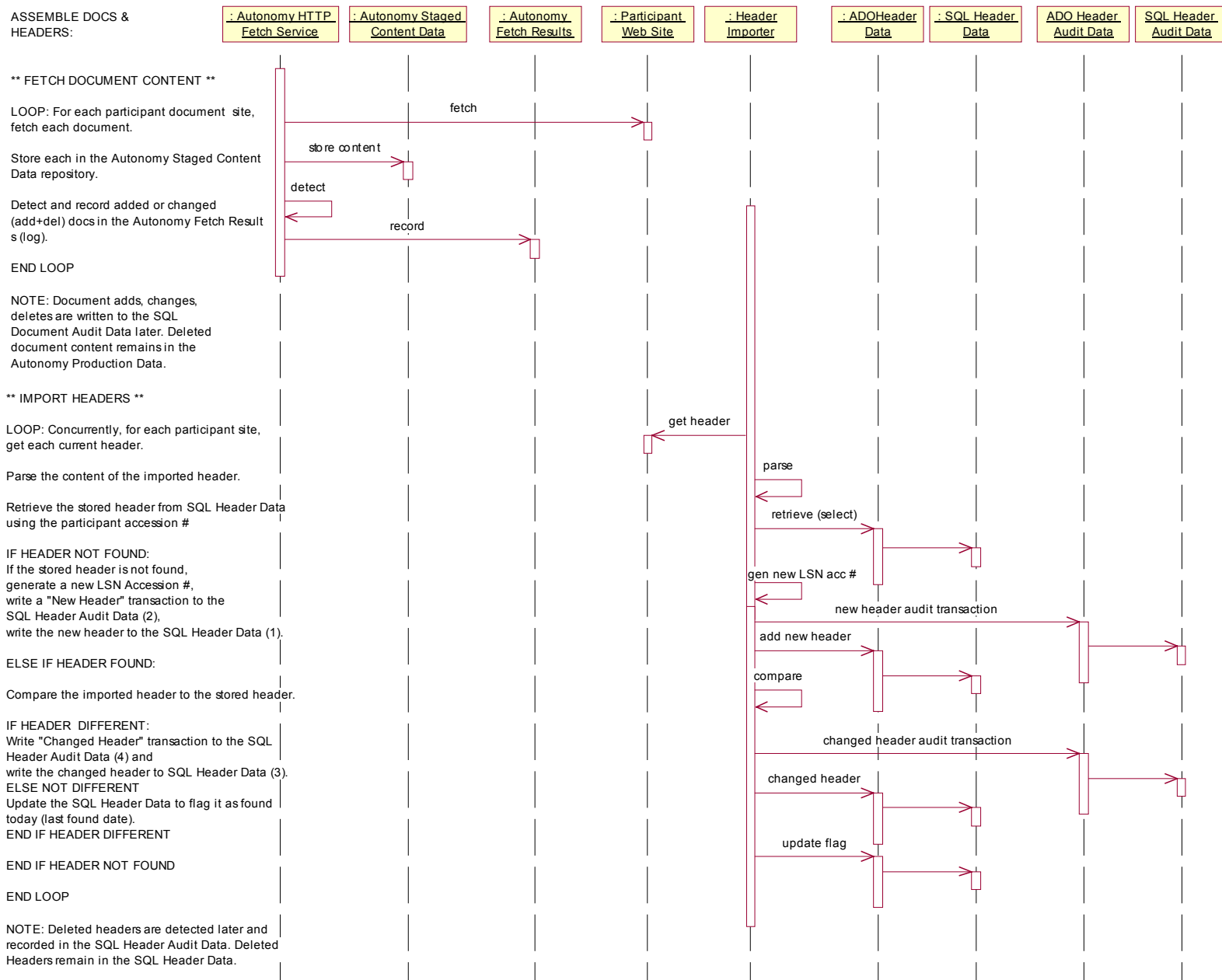


Figure 3.1.2-1: Assemble Documents and Headers Sequence Diagram

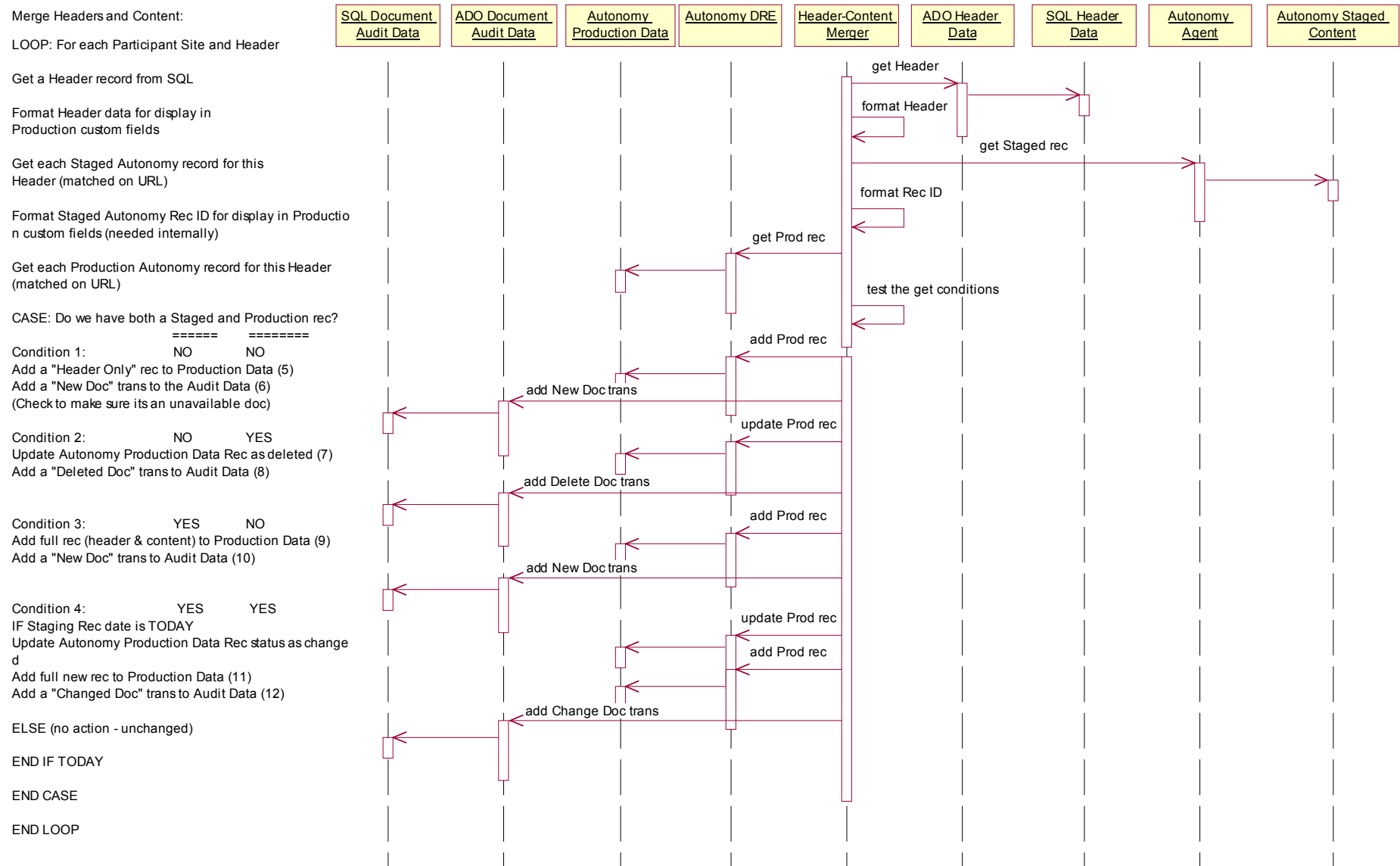


Figure 3.1.3-1: Merge Headers and Content Sequence Diagram

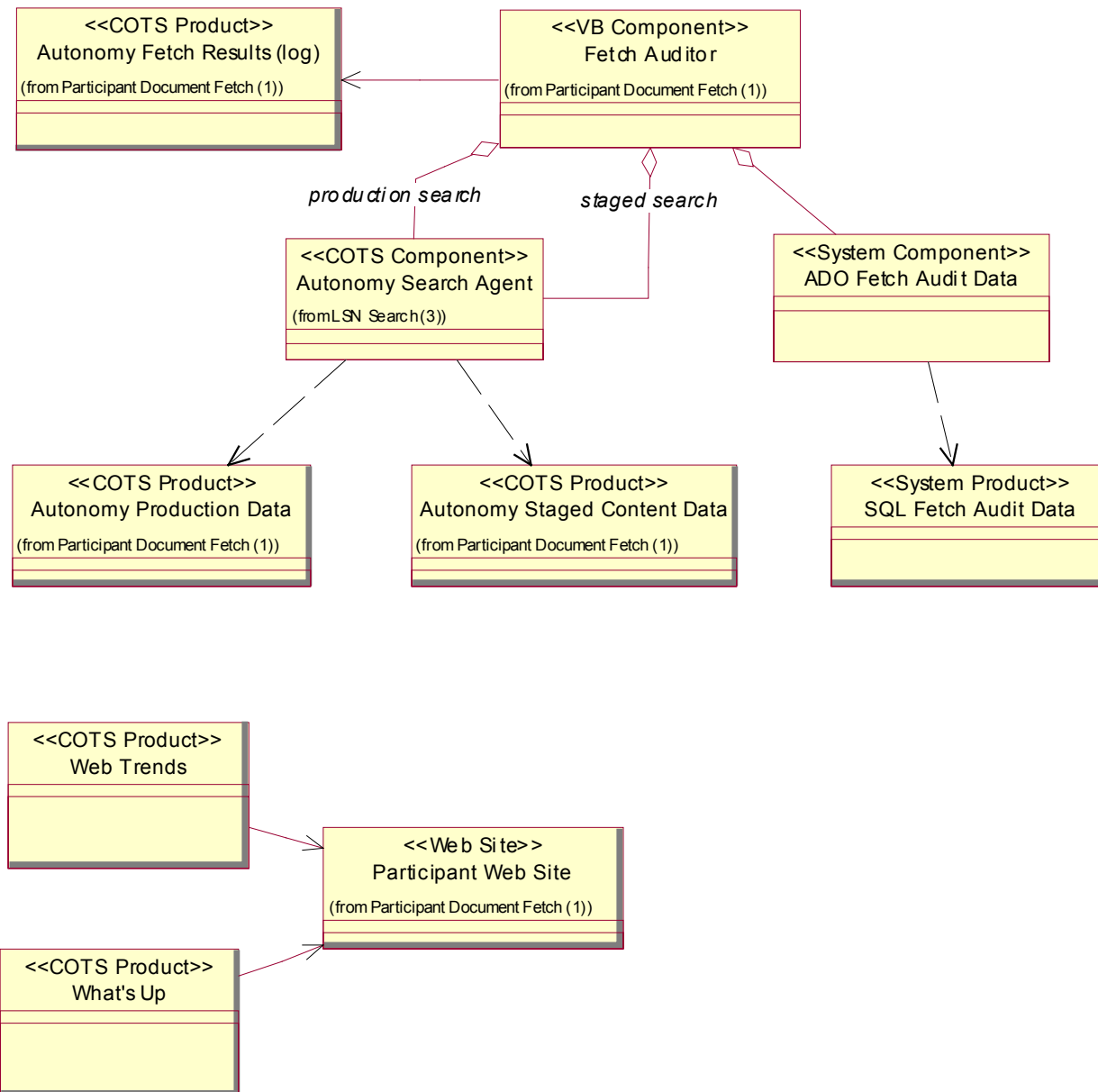


Figure 3.2.1-1: Participant Site Audit Class Diagram

Audit Document Changes:

LOOP: For each entry in the LOG

Read each DELETE entry from log

Parse the fields for Autonomy Doc ID, etc.

Search Production records for Stage Doc ID
(stored as a custom field)

IF PROD REC NOT FOUND, ignore (not a doc)

ELSE IF PROD REC FOUND

Get Participant URL from Production rec

Search Staging records for matching URL

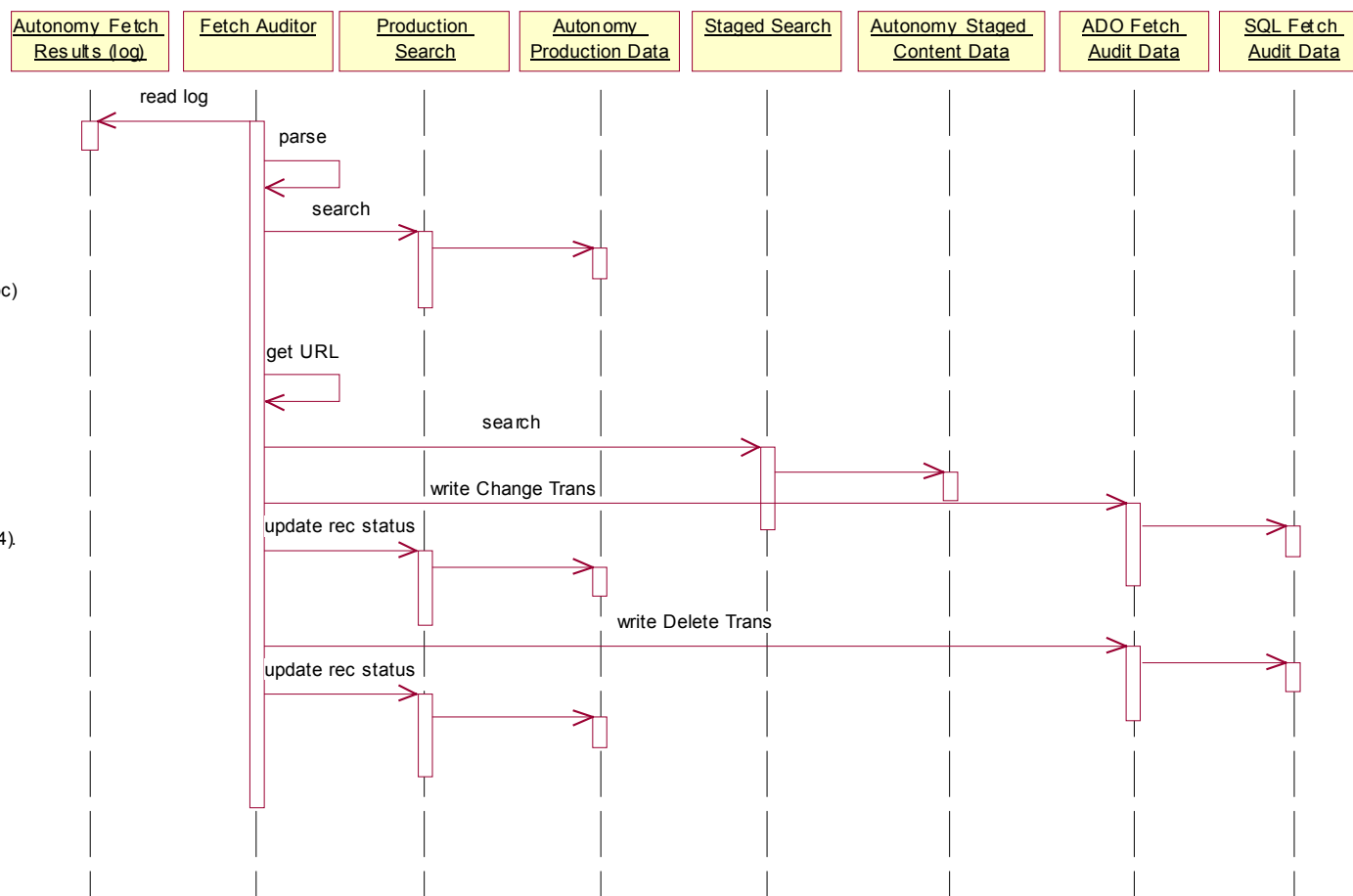
IF STAGING REC FOUND,
Write a Change Trans to Audit (13) &
Update production rec status to "Changed" (14).

ELSE IF NOTFOUND,
Write a Delete Trans to Audit (15) &
Update production rec status to
"Deleted" (16).

END IF STAGING

END IF PROD REC

END LOG LOOP



NOTE: the log shows a CHANGED document as
2 transactions - DELETE & ADD.

Figure 3.2.3-1: Audit Document Changes Sequence Diagram

Audit Header Deletes:

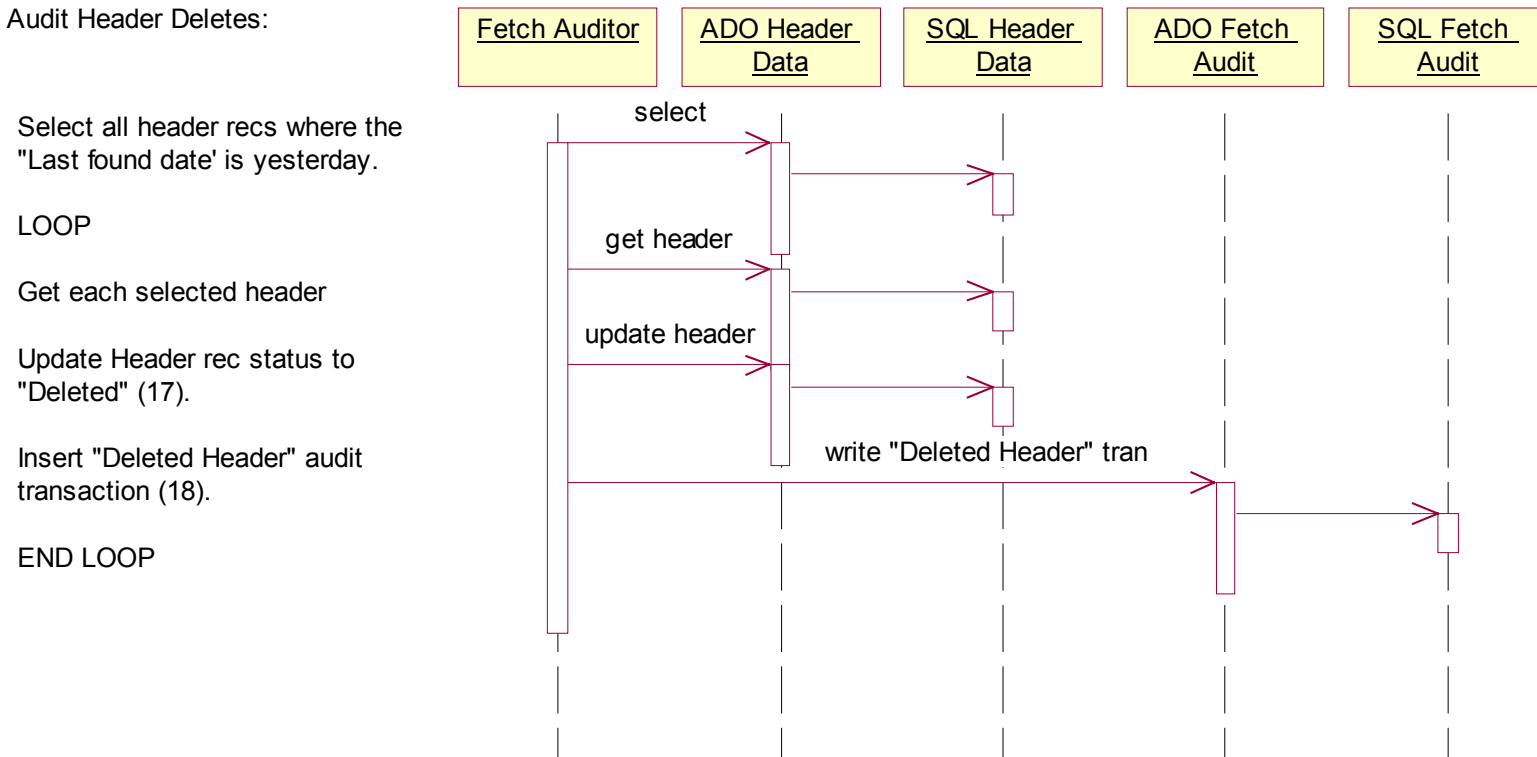


Figure 3.2.4-1: Audit Header Deletes Sequence Diagram

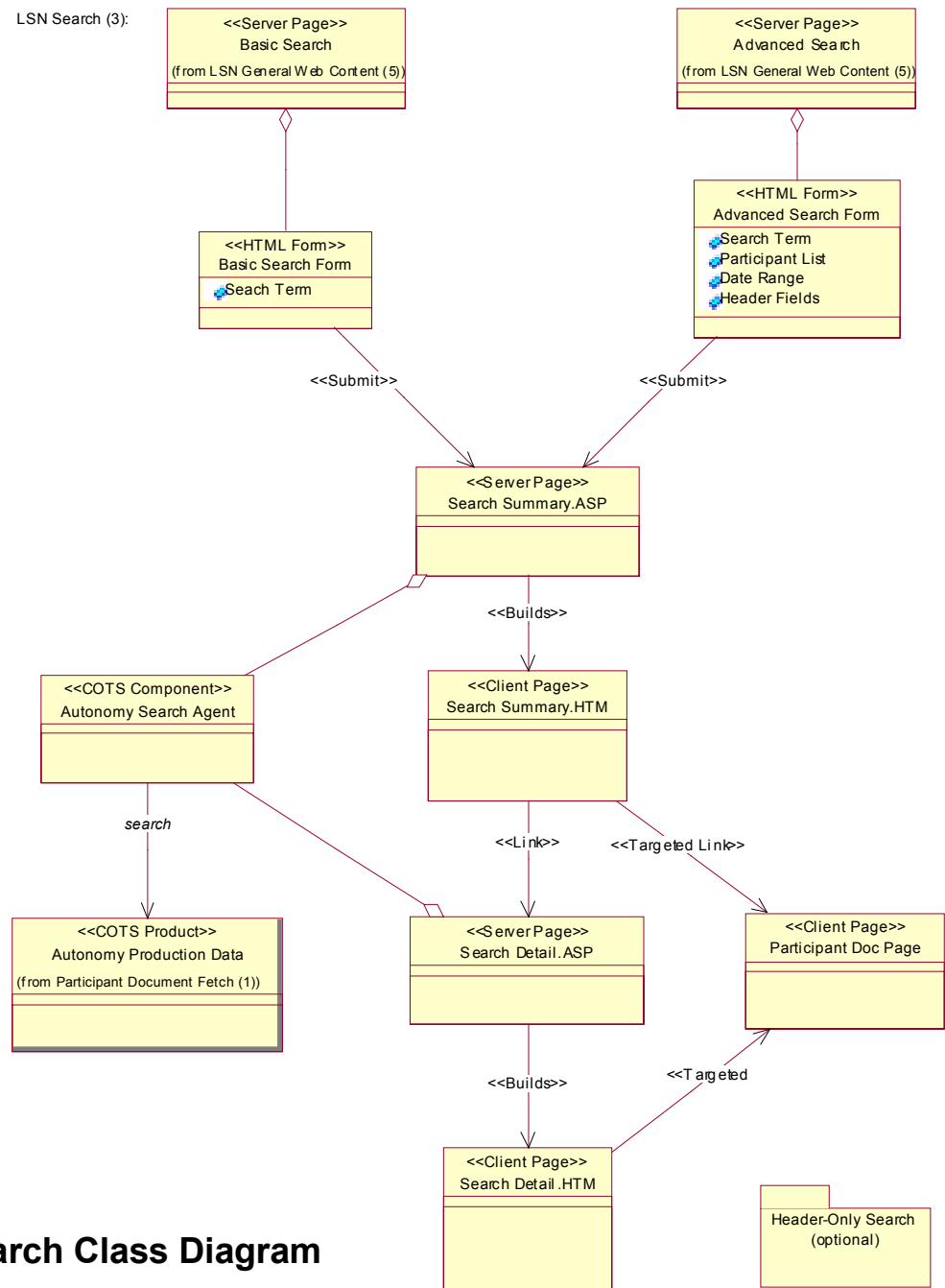


Figure 3.3.1-1: LSN Search Class Diagram

LSN Search:

The user enters search terms and presses the Search button to submit the page.

Format the Autonomy Search Query with the users values.

Run the query.

LOOP

Get one result from Autonomy
Generate the HTML for display
Write it to the HTML page

END LOOP

The user clicks on one record on the page.

Format and run the query

Format the result into an HTML page. (as above)

The user clicks on one and goes to the Participant site to view the document.

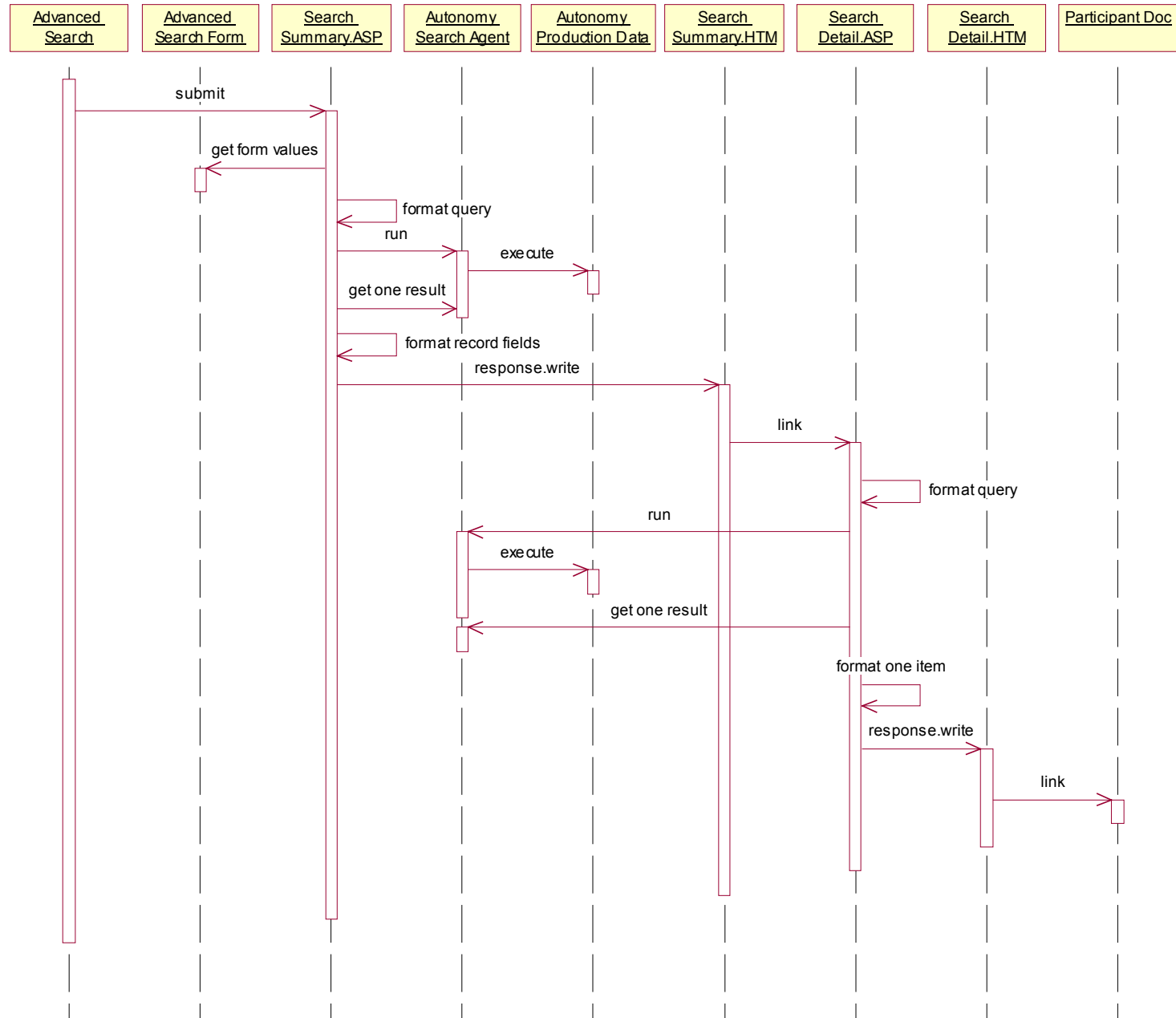


Figure 3.3.2-1: LSN Search Sequence Diagram

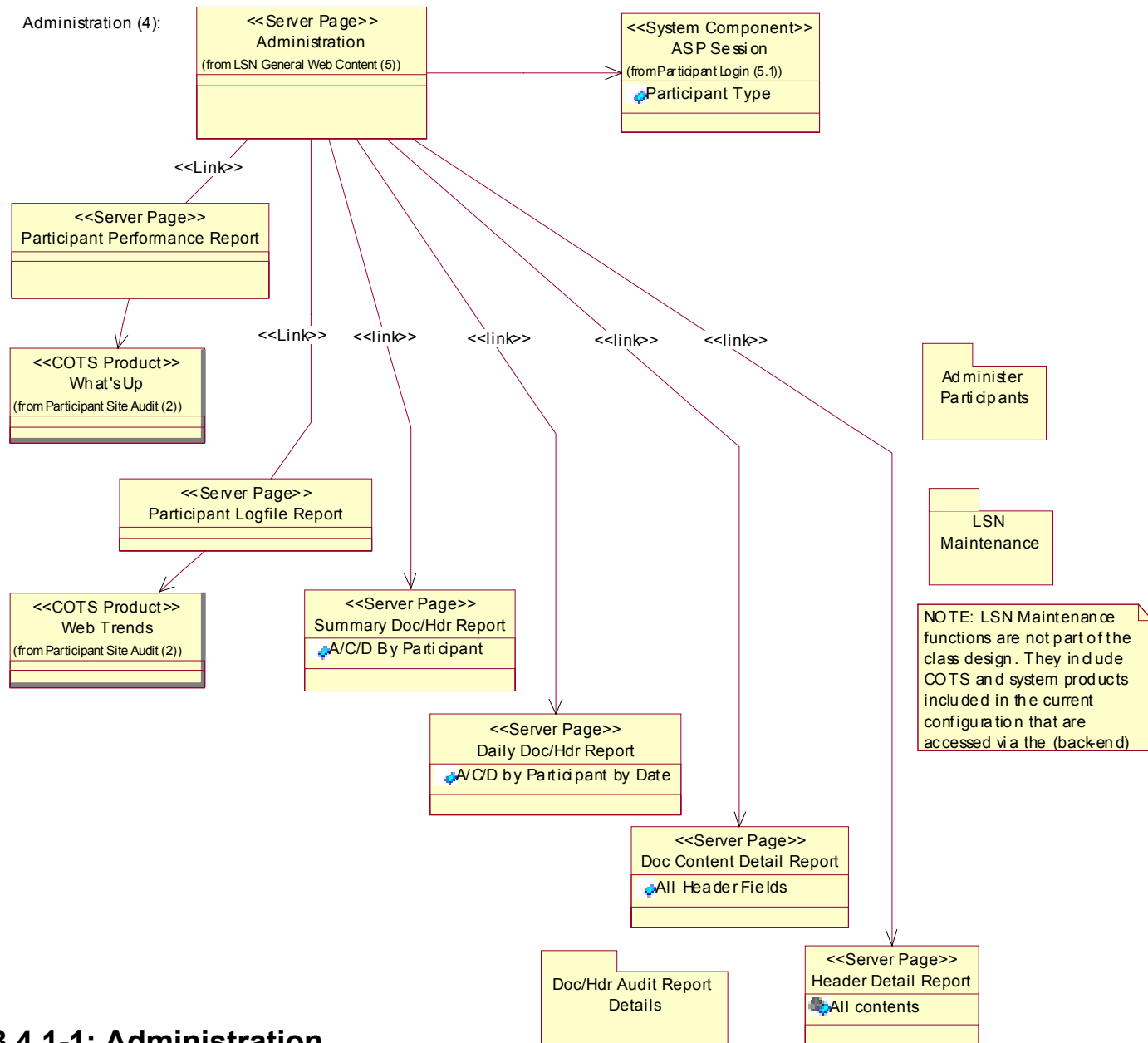


Figure 3.4.1-1: Administration Class Diagram

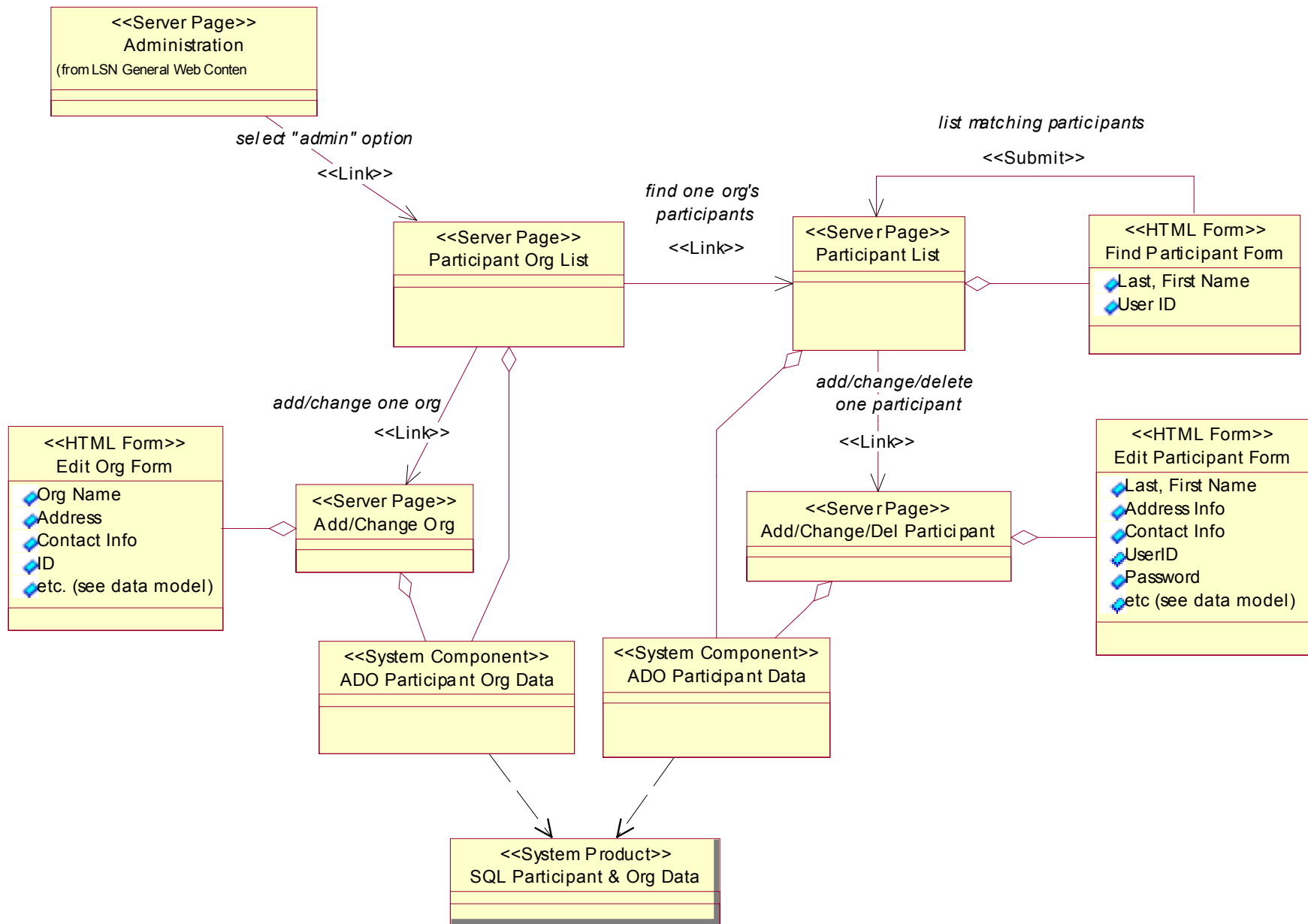


Figure 3.4.2-1: Participant Administration Class Diagram

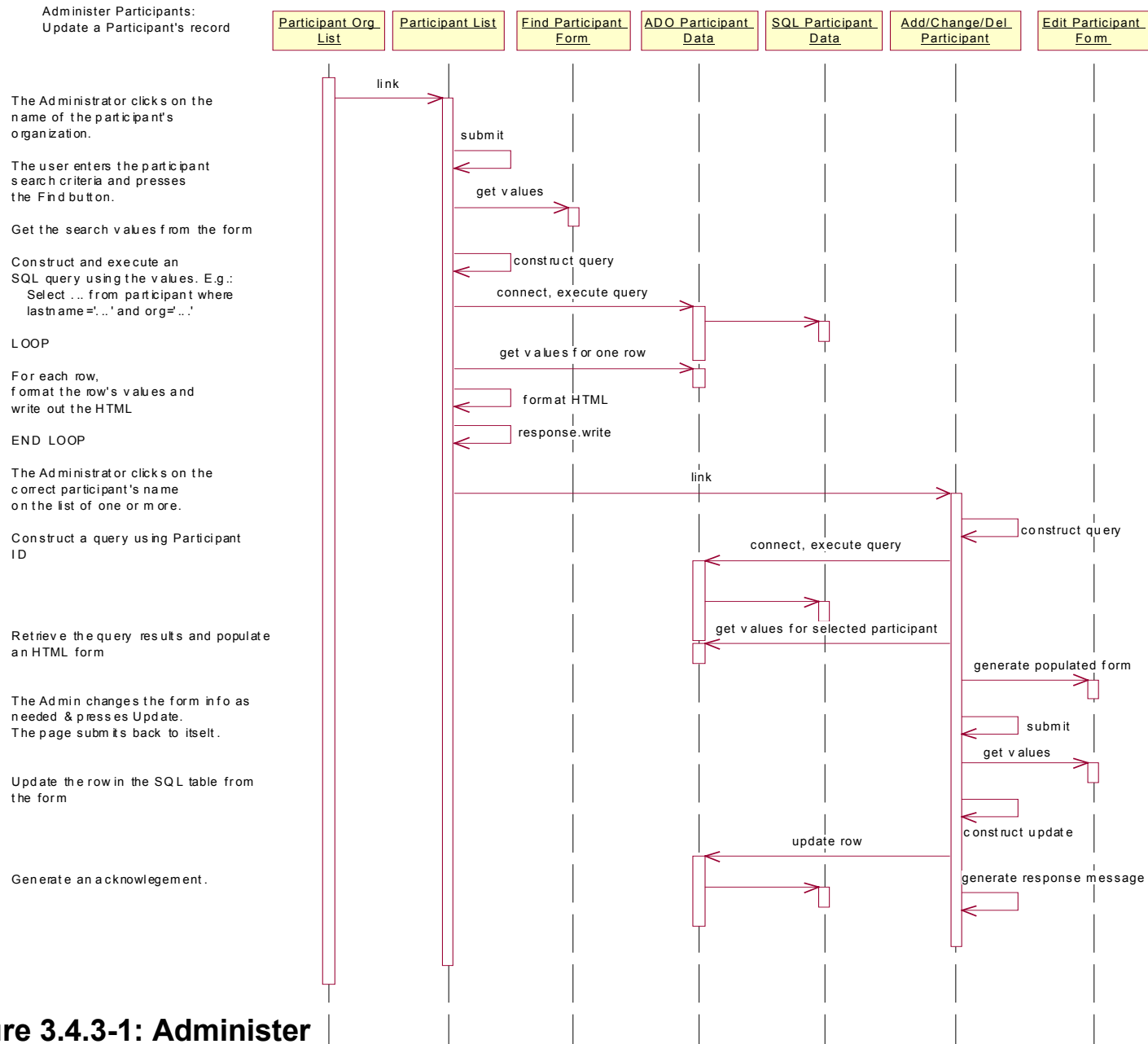


Figure 3.4.3-1: Administer Participants Sequence Diagram

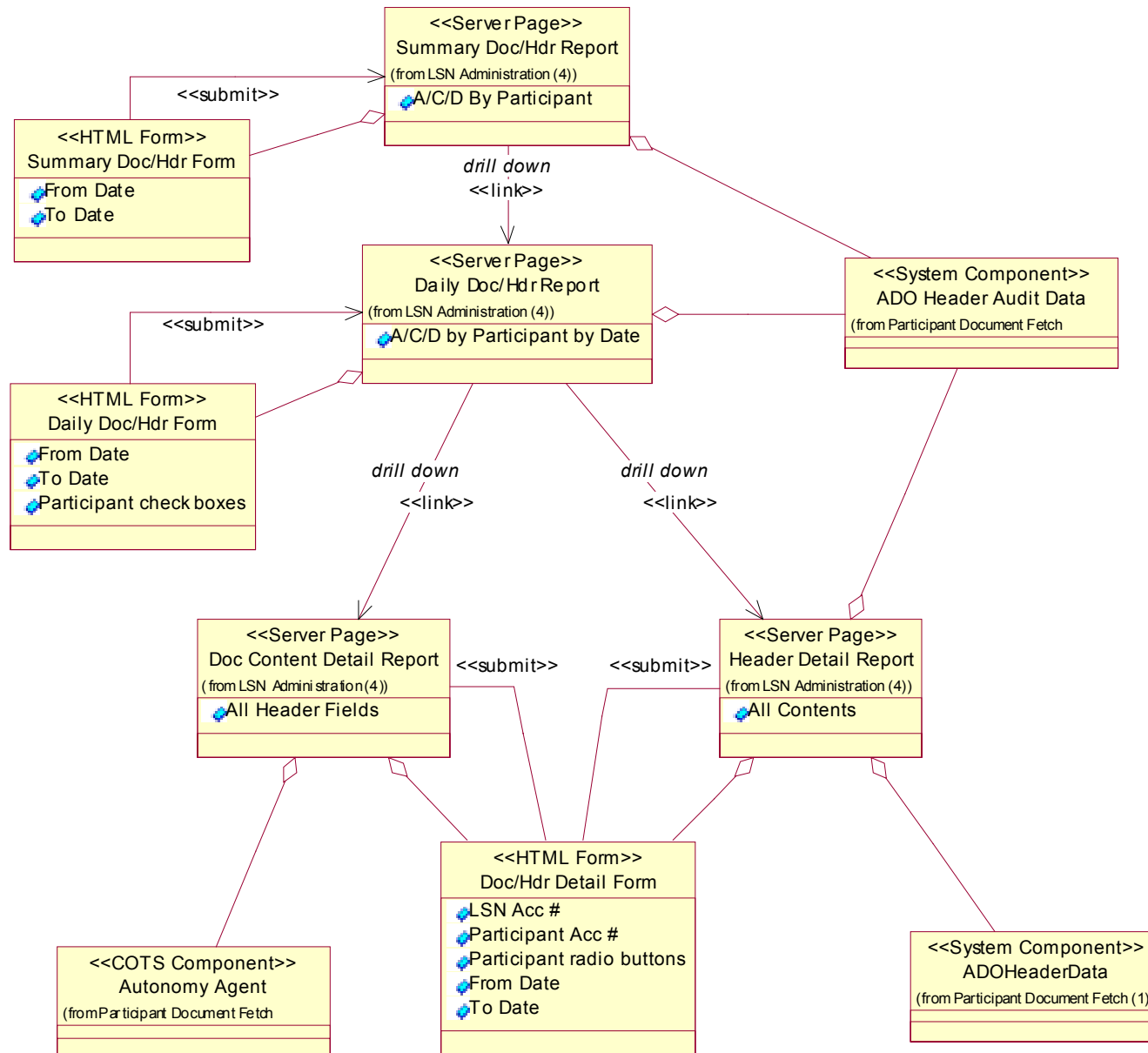


Figure 3.4.4-1: General Web Content Class Diagram

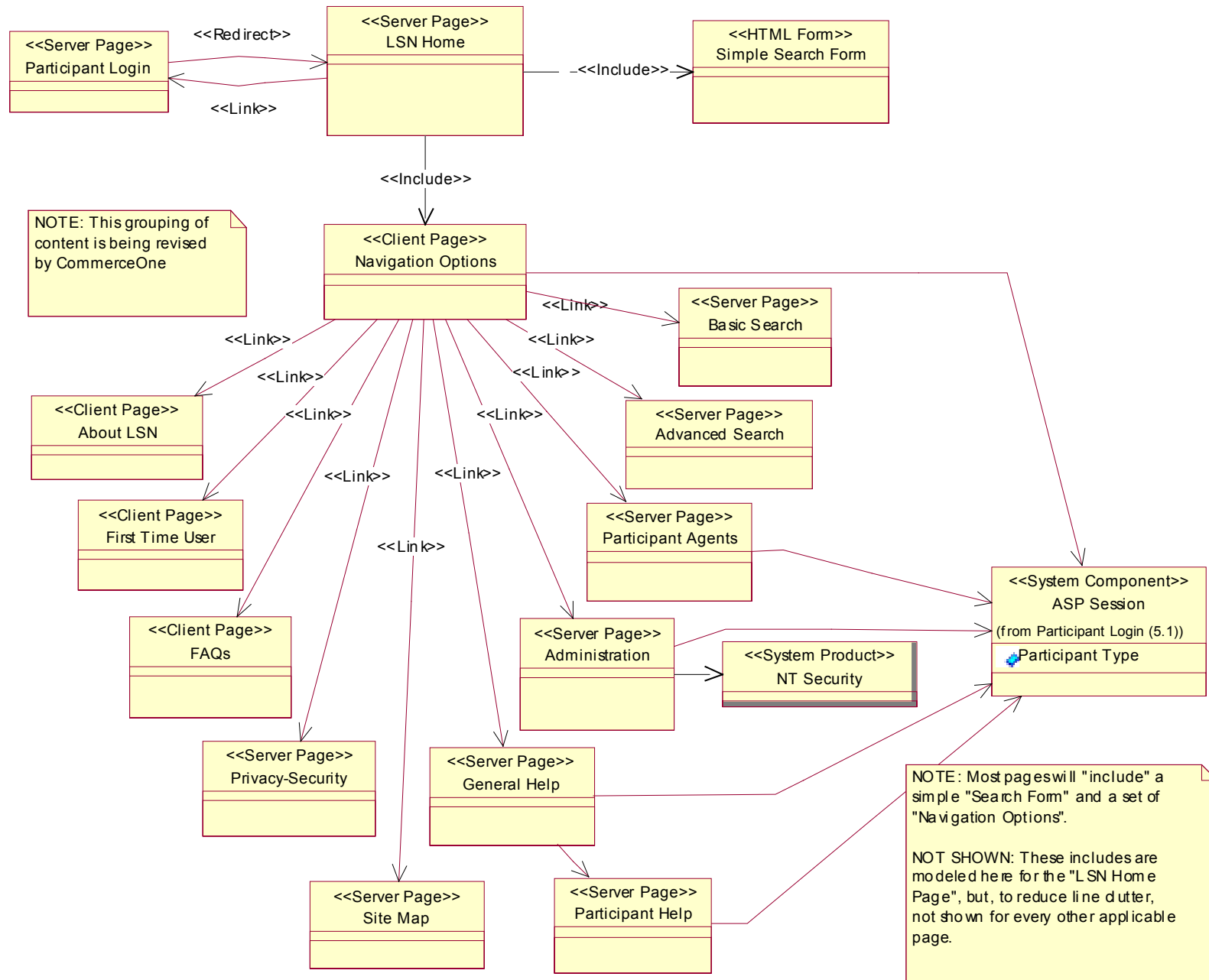


Figure 3.5.1-1: General Web Content Class Diagram

Configure the Participant's and Administrator's page options:
(Page customization)

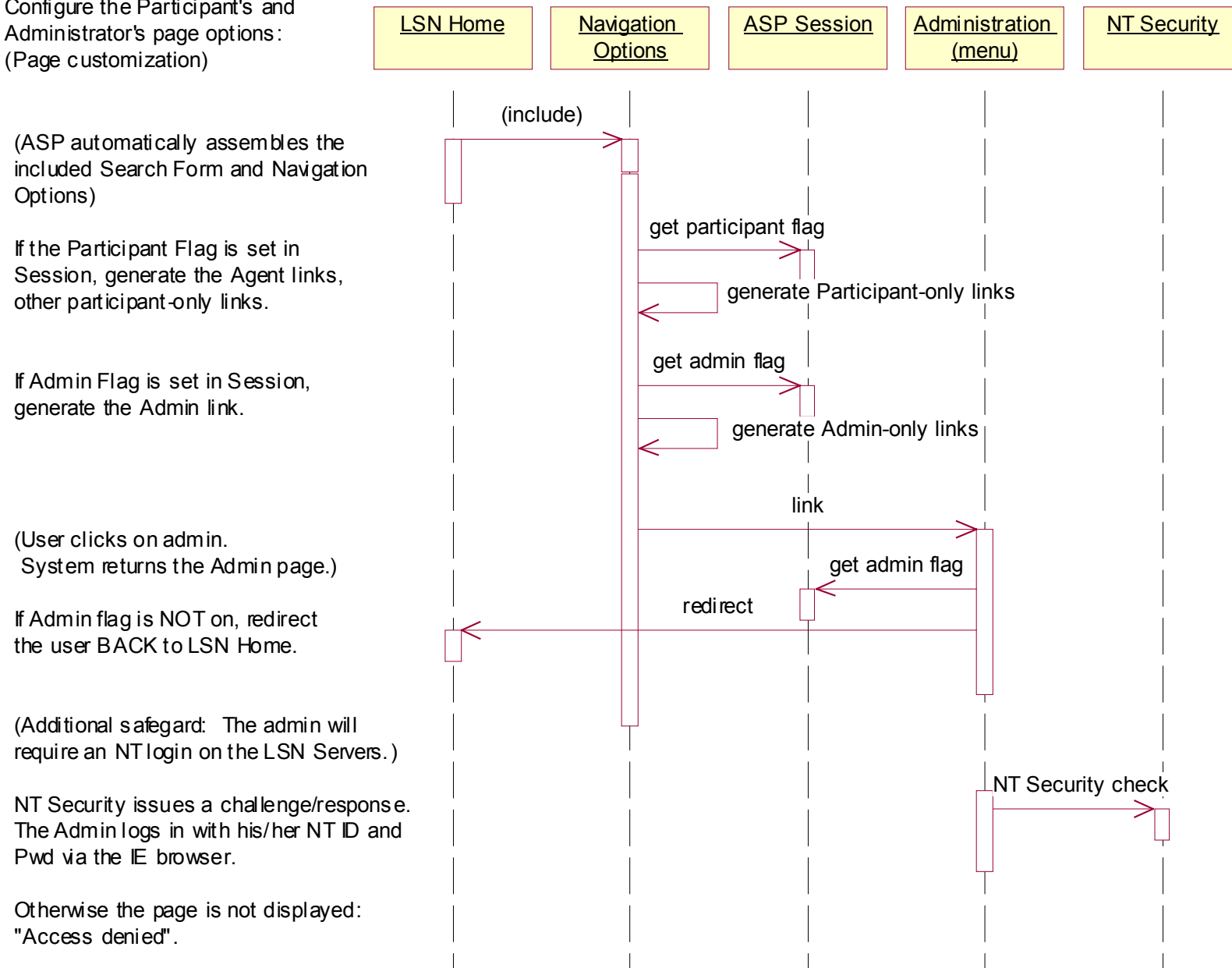


Figure 3.5.2-1: Configure Participant Page Sequence Diagram

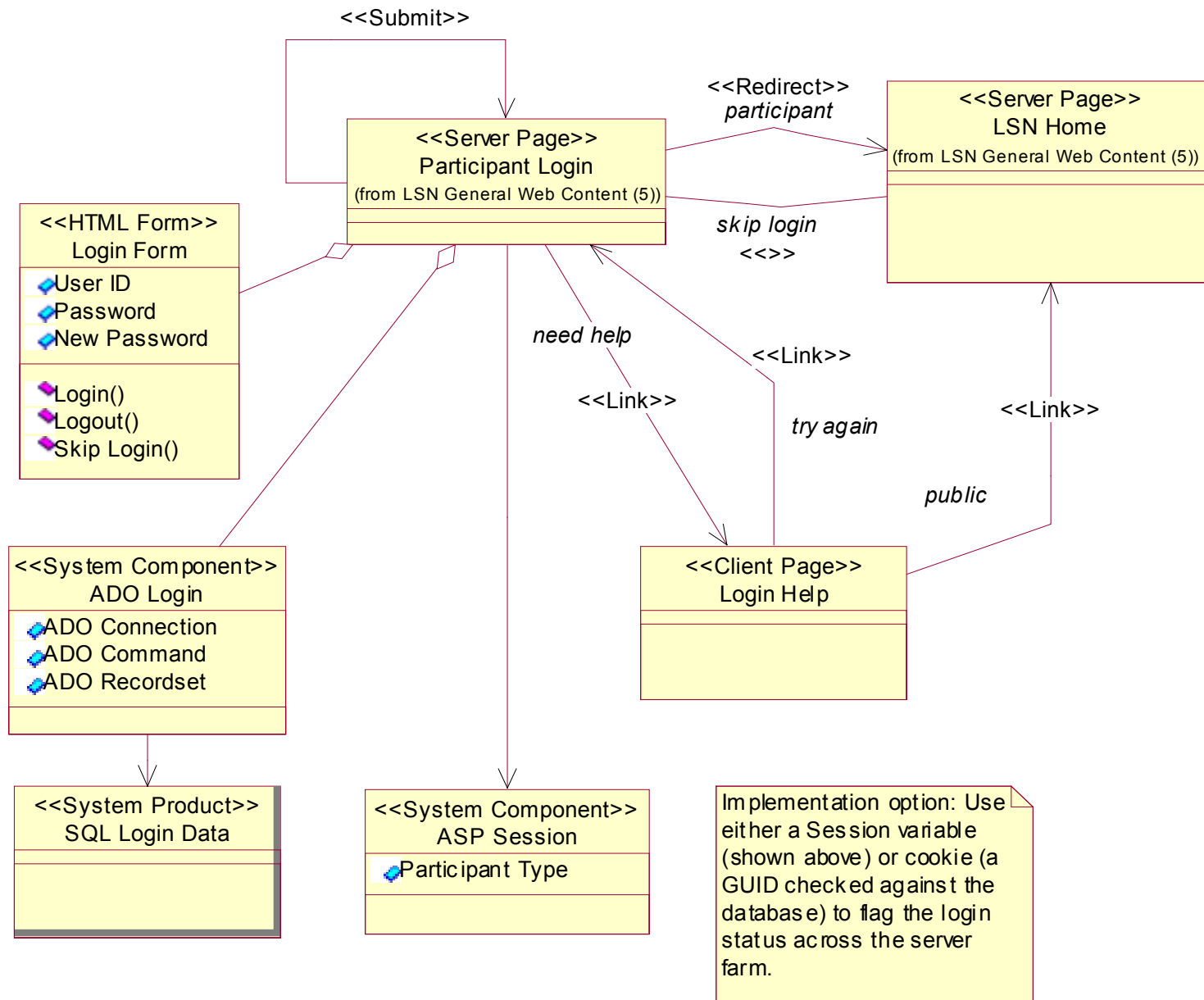


Figure 3.6.1-1: Participant Representative Login Class Model

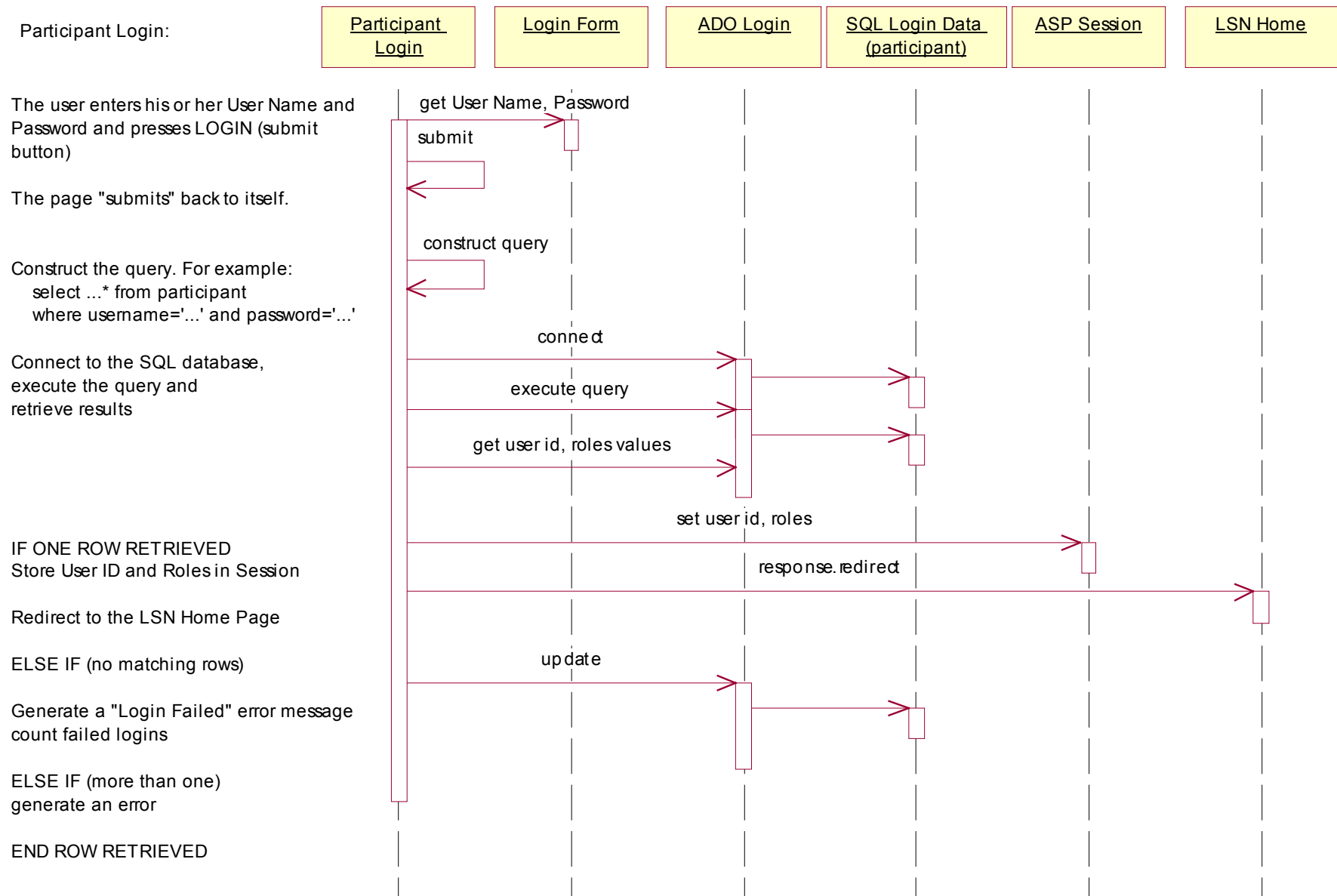


Figure 3.6.2-1: Participant Representative Login Sequence Diagram

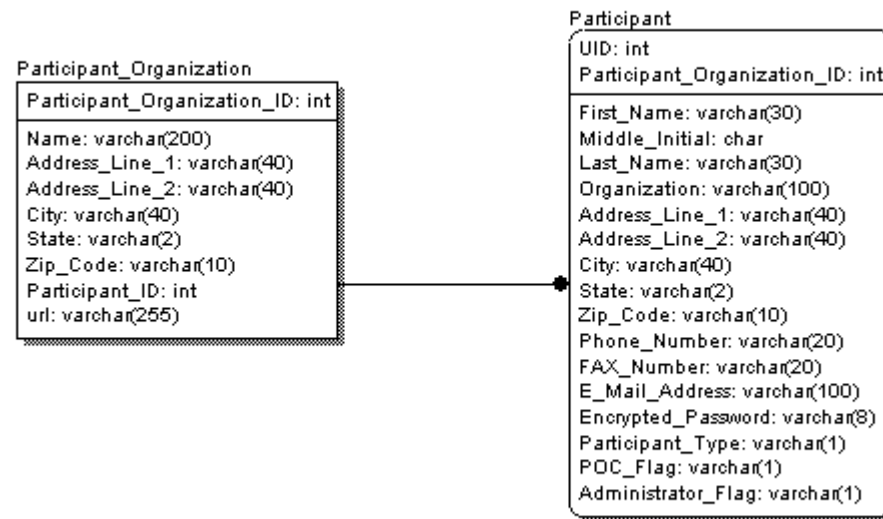


Figure 3.7-1: Physical Data Model (Part 1 of 3)

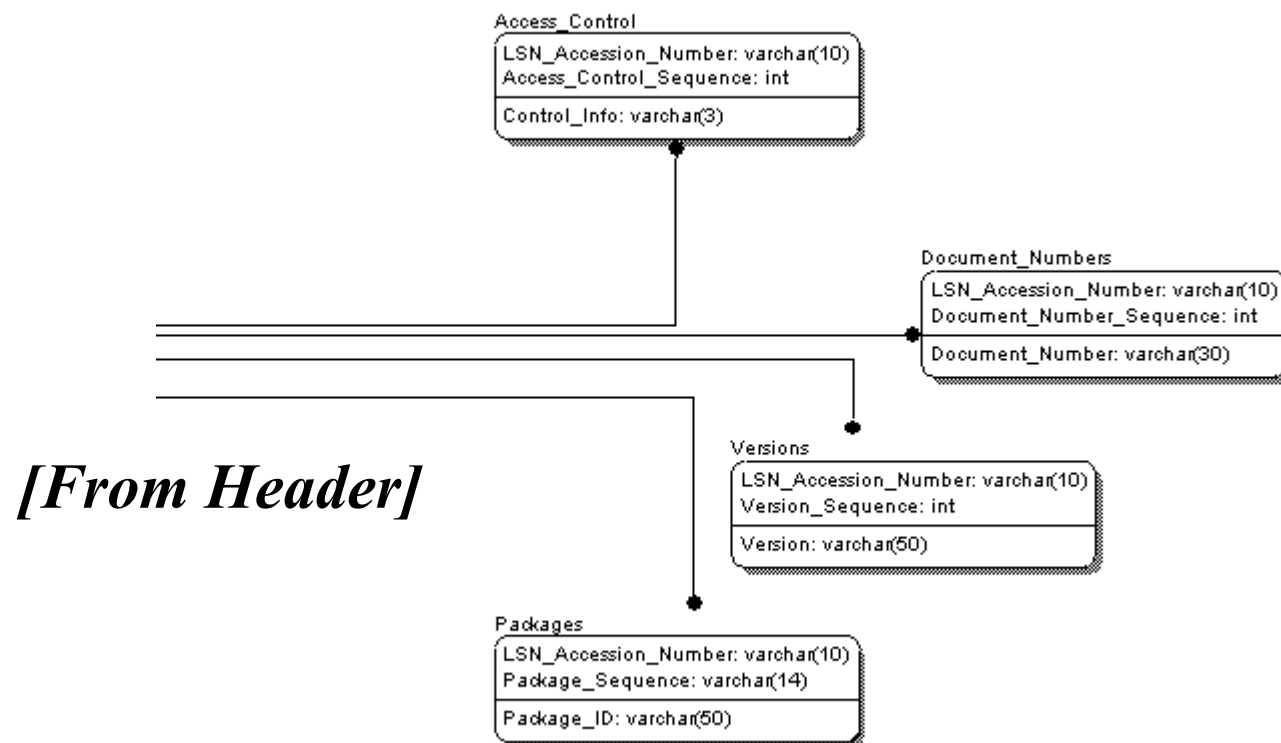


Figure 3.7-3: Physical Data Model (Part 3 of 3)