

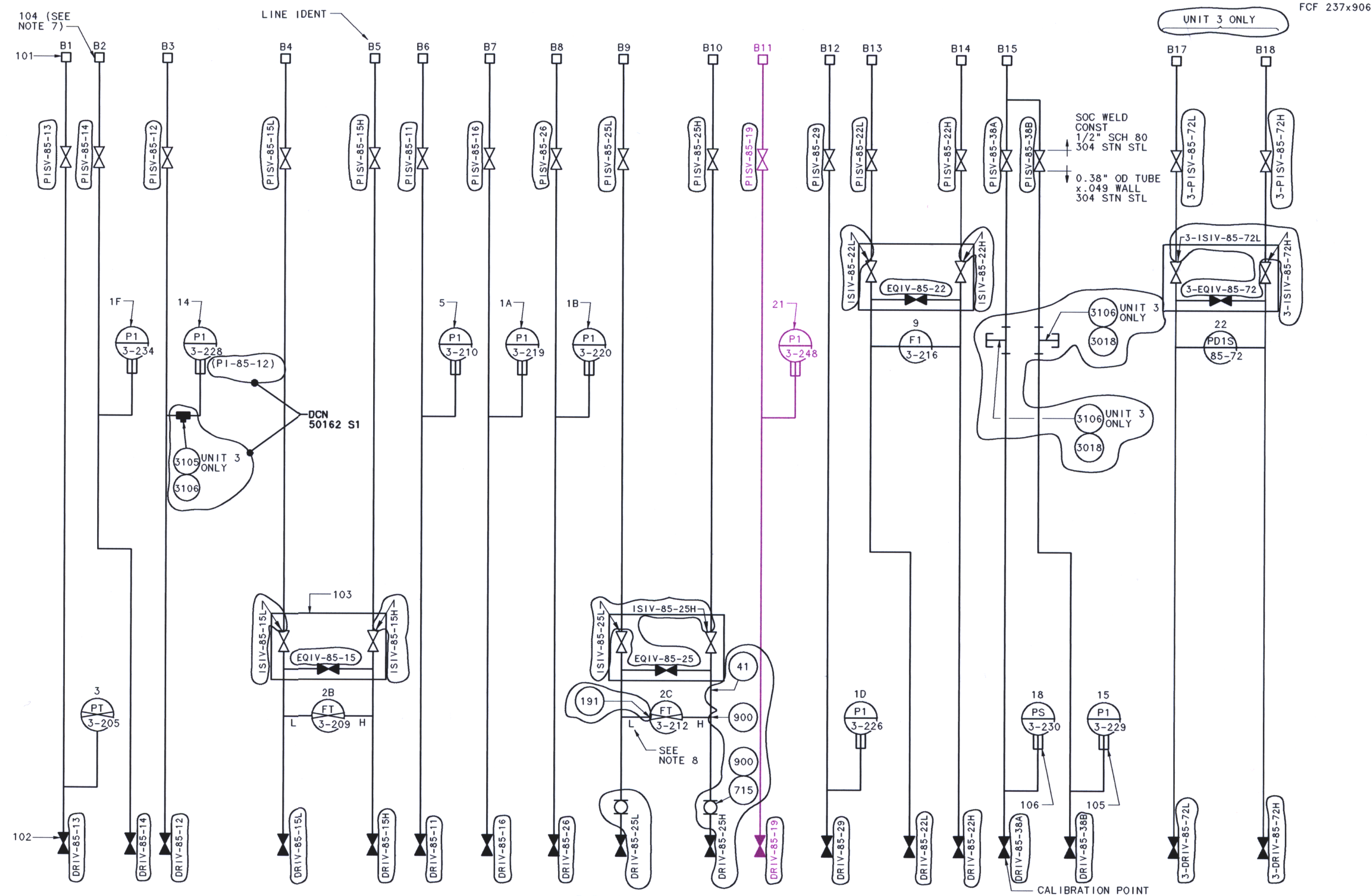
TITLE: ARRG

RACK 25-18

FIRST MADE FOR BROWNS FETTY UNIT 1,2 & 3 (CDR HYD SYS)

PURCHASE PART DRAWING

FCF 237x906



PIPING DIAGRAM - SECTION B

NOTES:

1. ISI SUFFIX FROM REFERENCE CONTINUATION DWG HAS BEEN OMITTED, AS APPLICABLE.
2. THE ISI CODE CLASS DRAWING DOES NOT NECESSARILY REPRESENT THE ACTUAL PLANT CONFIGURATION.

ALL REVISION CIRCLES ARE
RIMS MEMO R92 950201 800
EXCEPT AS NOTED

FOR ASME SECTION XI
USE ONLY

■ -ASME CODE CLASS 1 EQUIVALENT
■ -NON NUCLEAR CODE CLASS

ISI DRAWING WAS ISSUED FOR
BASELINE DWG: 0-117C2556-5
REV: 005

PROJECT: BFPN DISCIPLINE: MECH
CONTRACT: 80744/91750 UNIT: 1,2&3
DESC: ARRG RACK 25-18
DWG/DOC NO. 0-117C2556-5-ISI
REV: 001
DATE: 5-16-2000 ECH/FCR: FILE

* FOR ORIGINAL SIGNATURES AND PREVIOUS
REVISIONS SEE MICROFILM COPY

001	DCN 50162 S1	ADMIN	RD	RLD	WCH	5-16-2000
REVISED PER DCA 50162-001-000; REVISED PER RIMS MEMO R92 950201 800 (ADMINISTRATIVE REVISION)						
REV	CHANGE	REF	PREPARED	CHECKER	APPROVED	DATE
REVISIONS BY TVA						
MADE BY	*	APPROVALS	APED	*	DIV OR DEPT	
ISSUED	*			*	SAN JOSE, CALIF. LOCATION	
0-117C2556-5-ISI						
CCD						
CAD MAINTAINED DRAWING						
TVA:001						

D-2