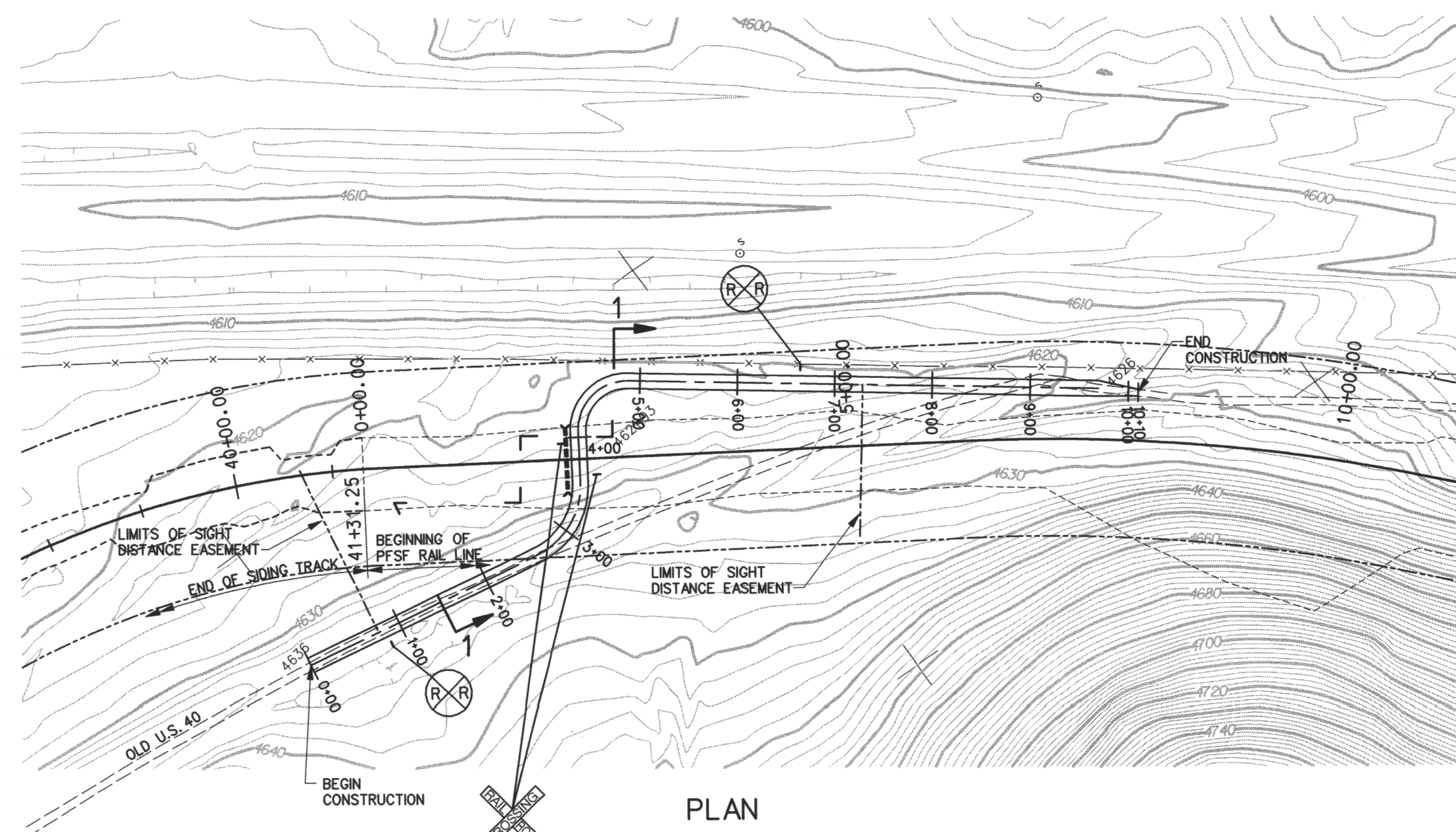
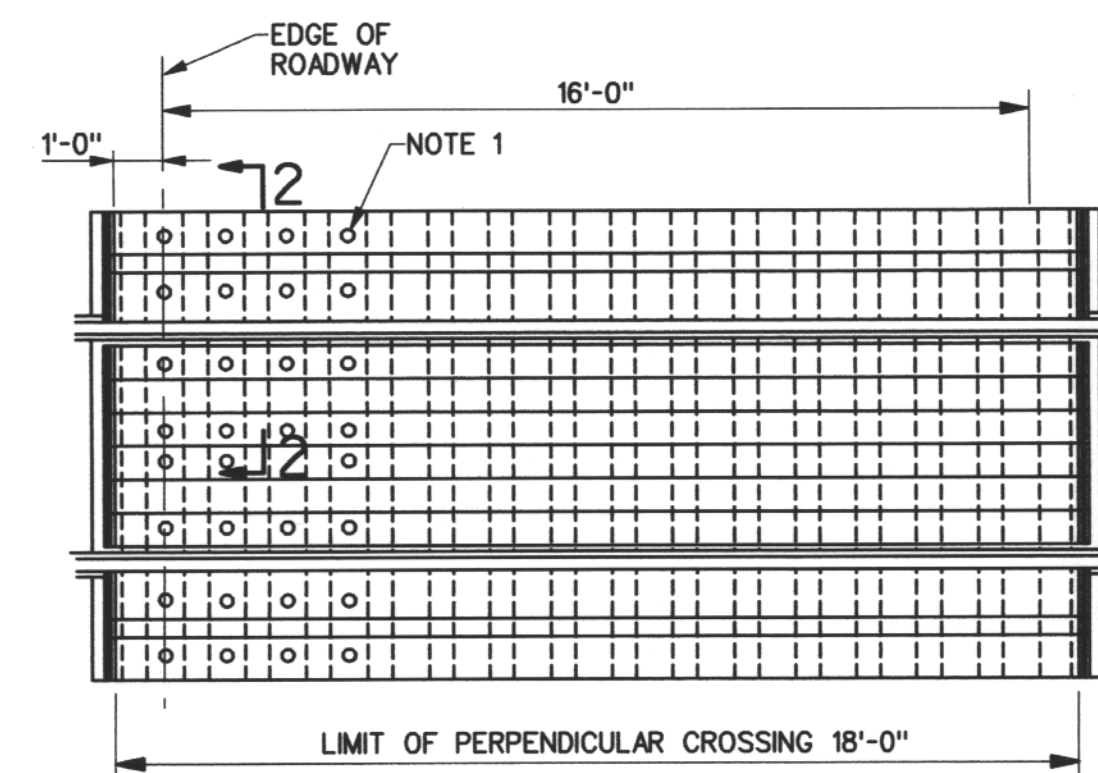


05996-DY-47

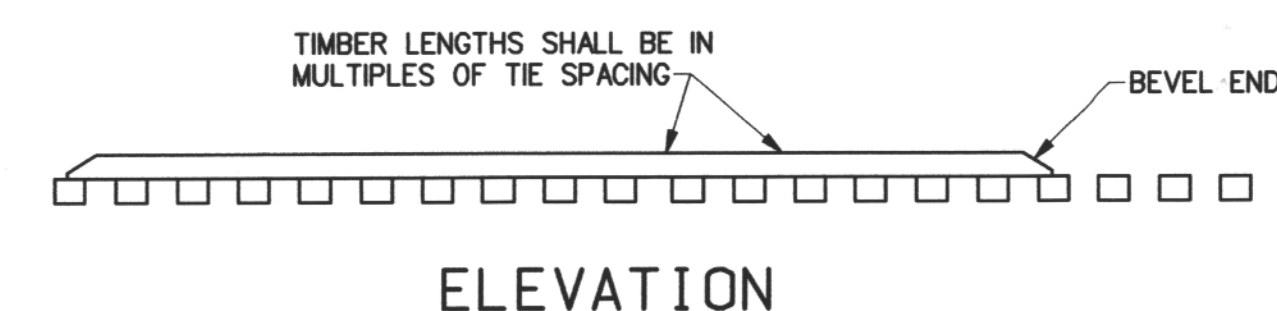


PLAN

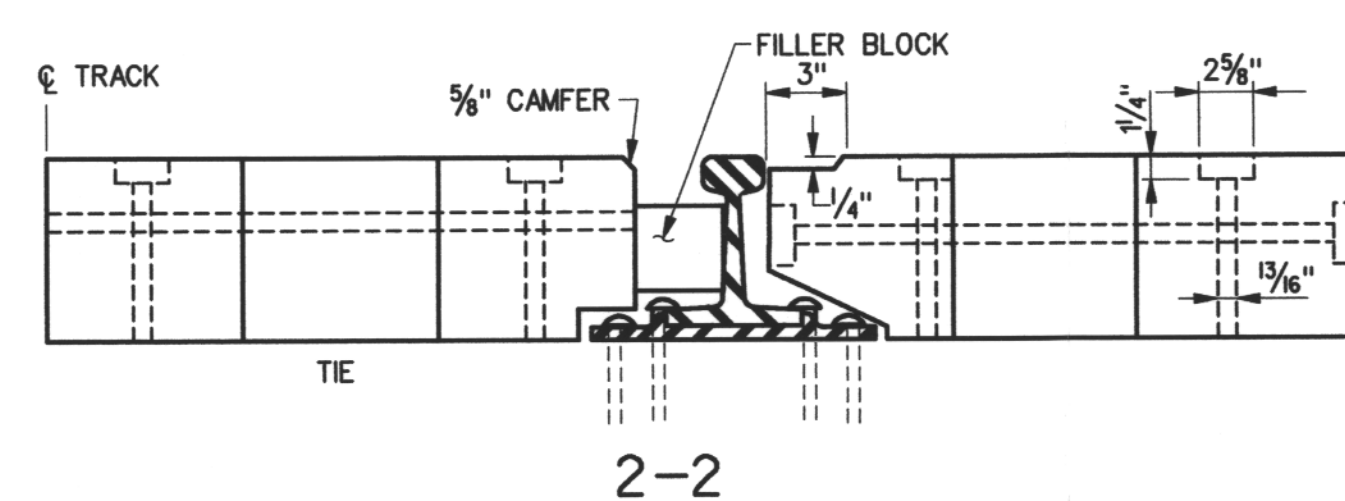
SCALE: 1"=100'



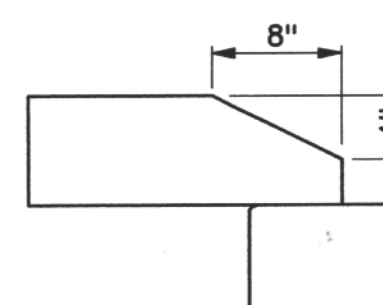
PREFABRICATED SECTIONAL TREATED
TIMBER CROSSING



ELEVATION



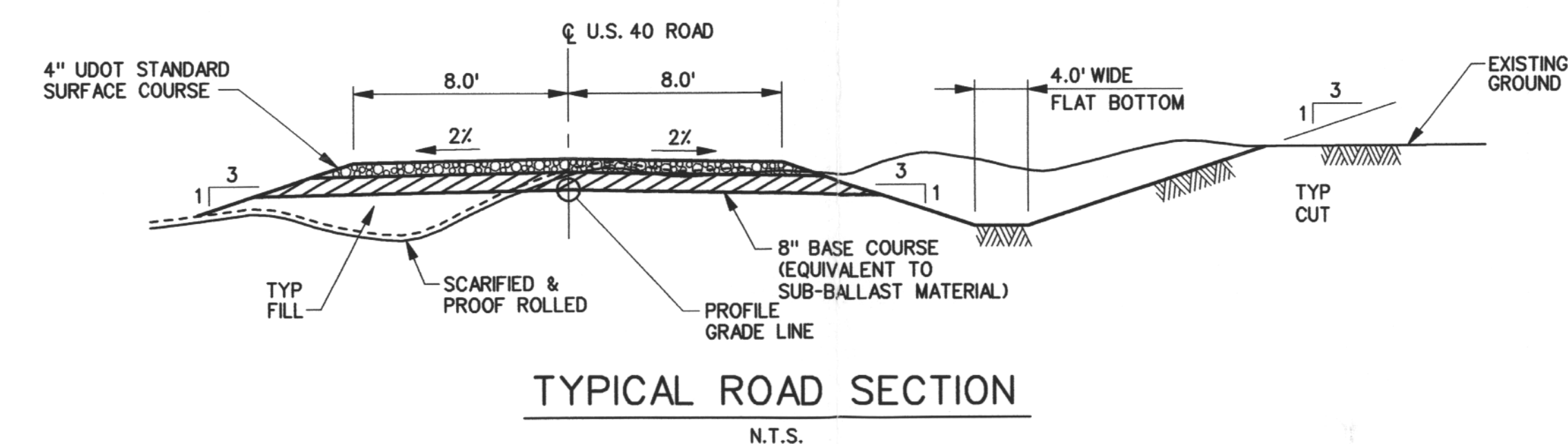
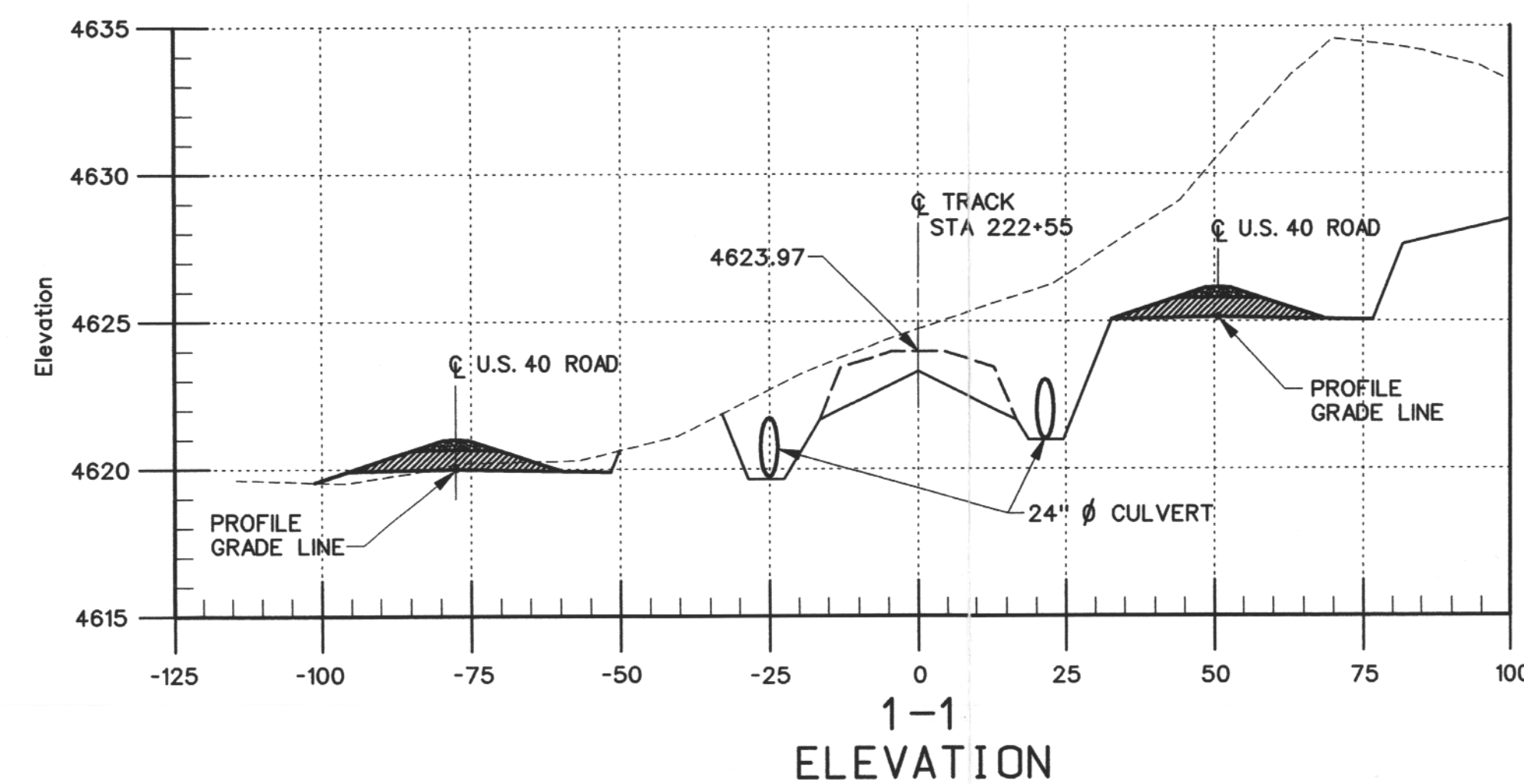
2-2



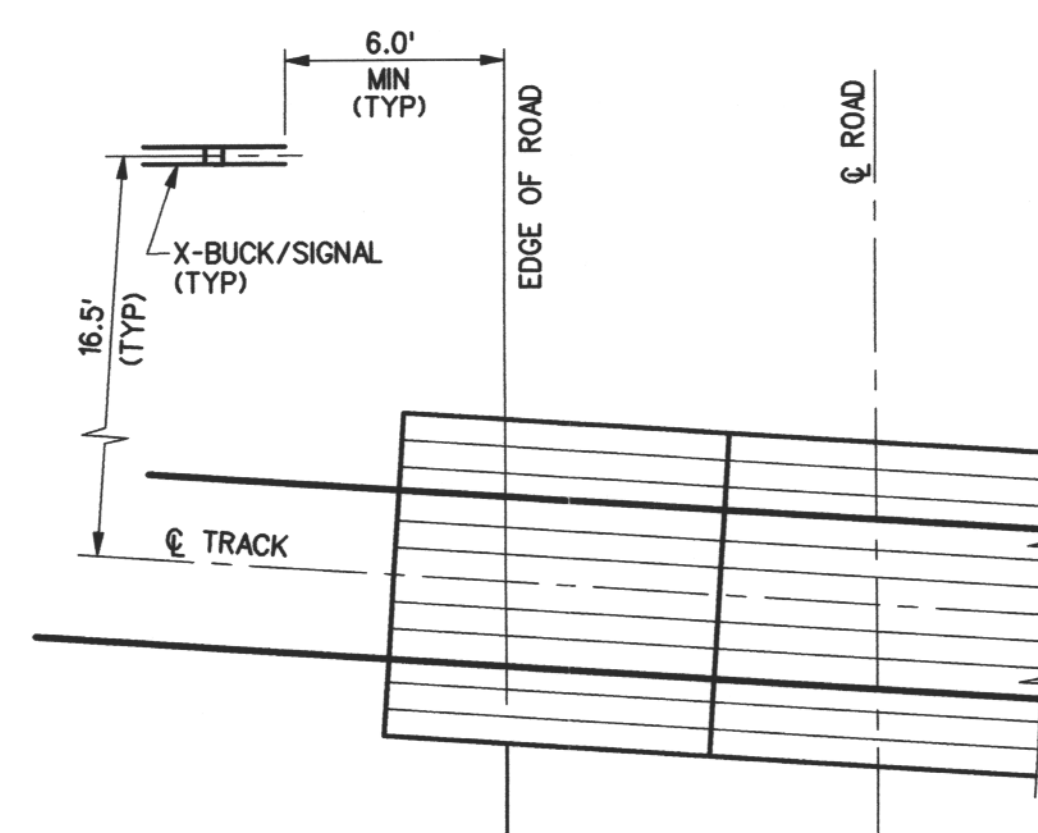
BEVEL END DETAIL



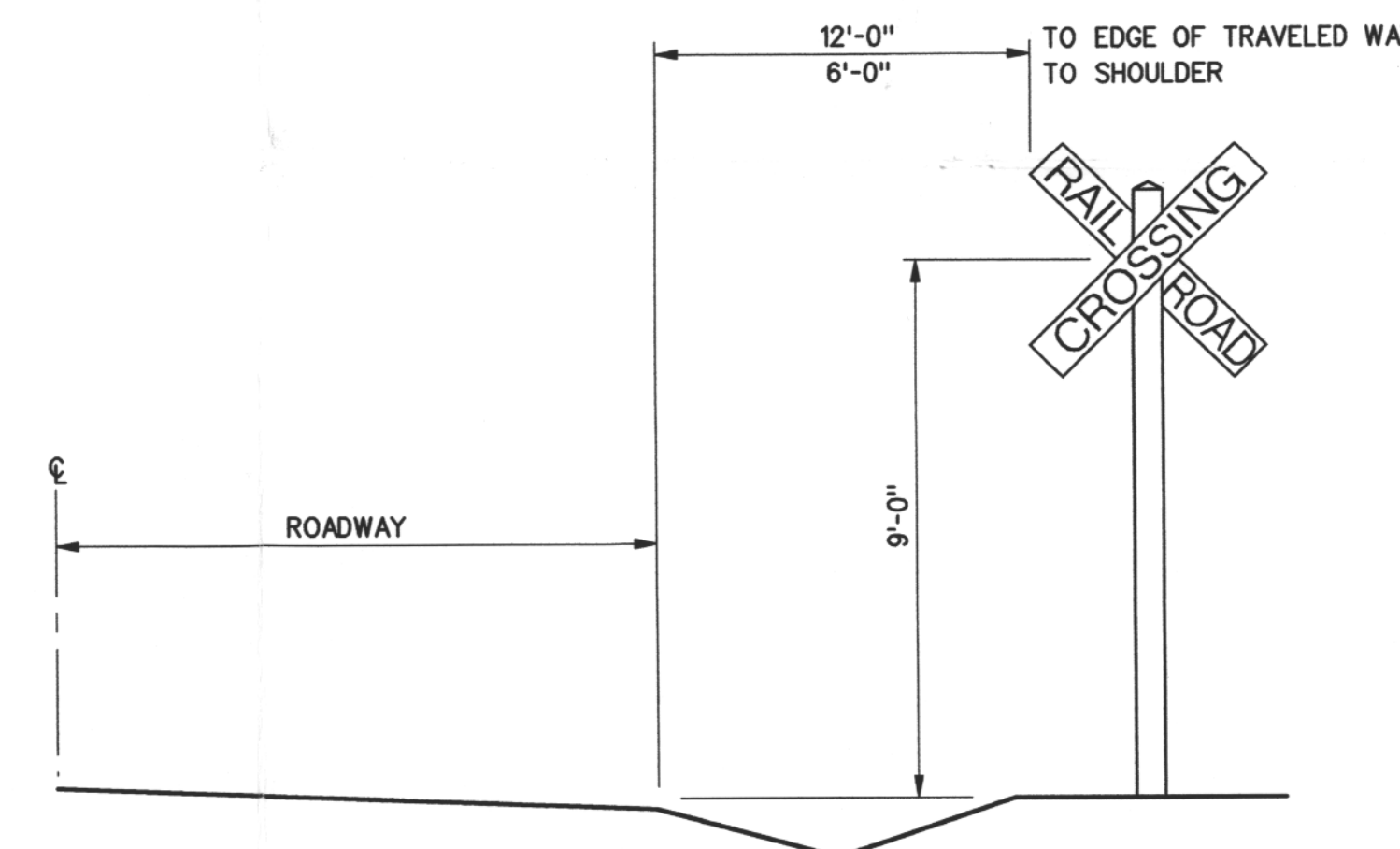
INTERSTATE 80



TYPICAL ROAD SECTION
N.T.S.



X-BUCK/SIGNAL LOCATION
PLAN VIEW
NTS



X-BUCK LOCATION
FRONT VIEW
NTS

- NOTES:
1. EACH SECTION SHALL BE ANCHORED TO THE TIES WITH (8) 3/4" Ø LAG BOLTS.
 2. THE INDIVIDUAL TIMBERS OF EACH SECTION SHALL BE PERMANENTLY HELD TOGETHER WITH A MINIMUM OF 3 STEEL BOLTS OR TWISTED DOWELS 3/4" Ø MINIMUM.

APERTURE
CARD

Docket # 72-22
Accession # 2000130182
Date 8/2/89
Regulatory Docket File

REVISION	DESCRIPTION	BY	CHK	DATE	REVISION	DESCRIPTION	BY	CHK	DATE	REVISION	DESCRIPTION	BY	CHK	DATE	REVISION	DESCRIPTION	BY	CHK	DATE	REVISION	DESCRIPTION	BY	CHK	DATE	REVISION	DESCRIPTION	BY	CHK	DATE

PFSF RAILROAD LINE
OLD U.S. 40
INTERSECTION PLAN

PRIVATE FUEL STORAGE, LLC
STONE & WEBSTER ENGINEERING CORPORATION
DENVER, COLORADO

DRAWING NUMBER 05996-DY-47-A

DESIGN BY R.A. FELT
CHECKED BY W.B. SWIGERT
DATE 8/2/89
FILE NO. 0599602
PFS047.DGN

9909230170

D-18