

05996-DY-44



MATCHLINE 05996-DY-43

R.O.W.

✓CATCHLINE (TYP)

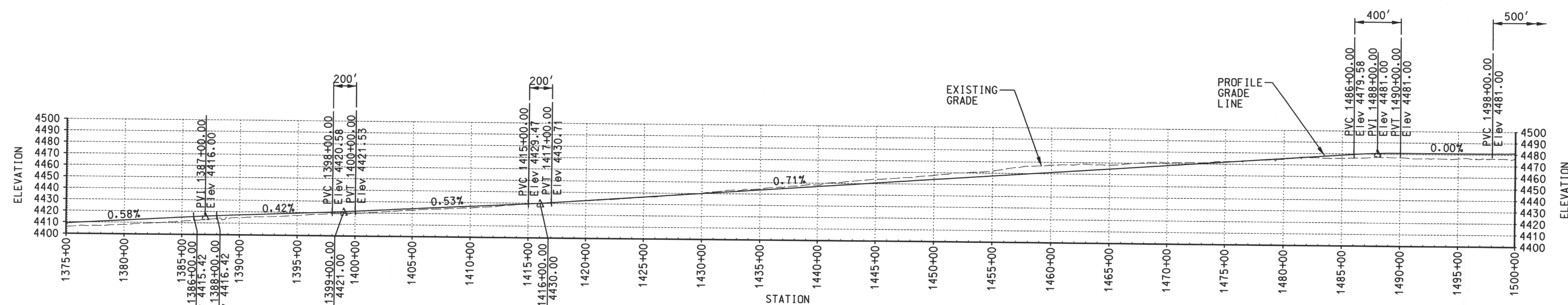
SEC. 27
SEC. 34

MATCHLINE 05996-DY-45

PLAN
SCALE: 1"=500'

9909230167

APERTURE
CARD

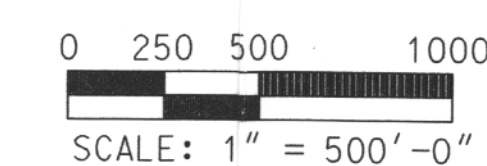


PROFILE
SCALE: 1"=500' (HOR)
1"=50' (VERT)

Docket # 72-22
Accession # 9909130192
Date 8/31/94 of L
Regulatory Docket File

NOTES:

1. FOR GENERAL NOTES, LEGEND AND REFERENCE DRAWINGS, SEE DRAWING 05996-DY-30.
2. COMPUTATIONS BASED ON ARC DEFINITION.
3. FOR CULVERT LOCATIONS AND SIZES, SEE CULVERT SCHEDULE ON DRAWING 05996-DY-49.
4. FOR TRACK SECTION, SEE TYPICAL TRACK SECTION ON DRAWING 05996-DY-32.



REVISION		DESCRIPTION							
		DRAWN		BY		CHKD			
		DESIGN		BY		CHKD			
		RESP		LEAD					
		APPR		DATE					
ARCH	CIVIL	CONC	STL	L & P	INST	P.S.	S.A.	FAC	ELEC MAT'L

SCALE: 1" = 500'-0"

REVISION		DESCRIPTION							
		DRAWN		BY		CHKD			
		DESIGN		BY		CHKD			
		RESP		LEAD					
		APPR		DATE					
ARCH	CIVIL	CONC	STL	L & P	INST	P.S.	S.A.	FAC	ELEC MAT'L

REVISION		DESCRIPTION							
		DRAWN		BY		CHKD			
		DESIGN		BY		CHKD			
		RESP		LEAD					
		APPR		DATE					
ARCH	CIVIL	CONC	STL	L & P	INST	P.S.	S.A.	FAC	ELEC MAT'L

REVISION		DESCRIPTION							
		DRAWN		BY		CHKD			
		DESIGN		BY		CHKD			
		RESP		LEAD					
		APPR		DATE					
ARCH	CIVIL	CONC	STL	L & P	INST	P.S.	S.A.	FAC	ELEC MAT'L

REVISION		DESCRIPTION							
		DRAWN		BY		CHKD			
		DESIGN		BY		CHKD			
		RESP		LEAD					
		APPR		DATE					
ARCH	CIVIL	CONC	STL	L & P	INST	P.S.	S.A.	FAC	ELEC MAT'L

PRELIMINARY ISSUE- FOR BLW USE

BY *[Signature]* CHKD *[Signature]*

DATE *[Date]*

PFSF RAILROAD LINE
PLAN & PROFILE- SHEET 12

PRIVATE FUEL STORAGE FACILITY
PRIVATE FUEL STORAGE, LLC
STONE & WEBSTER ENGINEERING CORPORATION
DENVER, COLORADO



DRAWING NUMBER 05996-DY-44-A

DESIGN BY R. EDLER	DRAWN BY R. EDLER	SWEC J.O. NO.	FILE NO.
DSGN CHK'D BY D.W. HAYES	CHK'D BY W.B. SWIGERT	0599602	PFS0Y44.DGN

9909230167

D-13