

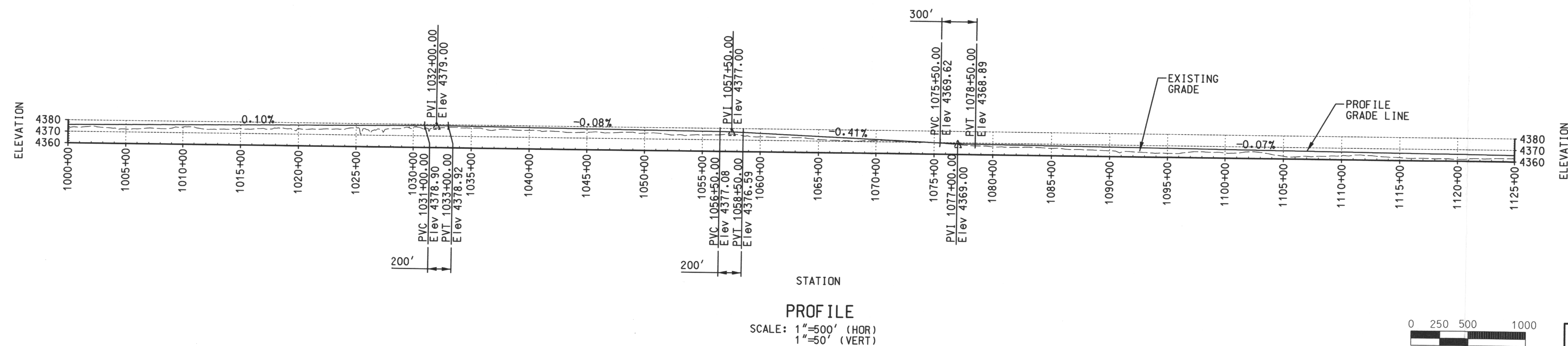


APERTURE  
CARD

Docket # 72-22  
Accession # 9205120592  
Date 8/31/99 of Ltr  
Regulatory Docket File

NOTES:

1. FOR GENERAL NOTES, LEGEND AND REFERENCE DRAWINGS, SEE DRAWING 05996-DY-30.
2. COMPUTATIONS BASED ON ARC DEFINITION.
3. FOR CULVERT LOCATIONS AND SIZES, SEE CULVERT SCHEDULE ON DRAWING 05996-DY-49.
4. FOR TRACK SECTION, SEE TYPICAL TRACK SECTION ON DRAWING 05996-DY-32.
5. FOR TYPICAL JEEP TRAIL CROSSING, SEE DRAWING 05996-DY-48.



REVISION										DESCRIPTION										DRAWN										BY										CHKD										DESIGN										RESP										LEAD										APPR										DATE																			
REVISION										DESCRIPTION										DRAWN										BY										CHKD										DESIGN										RESP										LEAD										APPR										DATE																			
ARCH										CIVIL										CONC										STL										L & P										INST										P.S.										S.A.										FAC										ELEC										MAT'L									
ARCH										CIVIL										CONC										STL										L & P										INST										P.S.										S.A.										FAC										ELEC										MAT'L									
ARCH										CIVIL										CONC										STL										L & P										INST										P.S.										S.A.										FAC										ELEC										MAT'L									
ARCH										CIVIL										CONC										STL										L & P										INST										P.S.										S.A.										FAC										ELEC										MAT'L									
ARCH										CIVIL										CONC										STL										L & P										INST										P.S.										S.A.										FAC										ELEC										MAT'L									
ARCH										CIVIL										CONC										STL										L & P										INST										P.S.										S.A.										FAC										ELEC										MAT'L									
ARCH										CIVIL										CONC										STL										L & P										INST										P.S.										S.A.										FAC										ELEC										MAT'L									
ARCH										CIVIL										CONC										STL										L & P										INST										P.S.										S.A.										FAC										ELEC										MAT'L									
ARCH										CIVIL										CONC										STL										L & P										INST										P.S.										S.A.										FAC										ELEC										MAT'L									
ARCH										CIVIL										CONC										STL										L & P										INST										P.S.										S.A.										FAC										ELEC										MAT'L									
ARCH										CIVIL										CONC										STL										L & P										INST										P.S.										S.A.										FAC										ELEC										MAT'L									
ARCH										CIVIL										CONC										STL										L & P										INST										P.S.										S.A.										FAC										ELEC										MAT'L									
ARCH										CIVIL										CONC										STL										L & P										INST										P.S.										S.A.										FAC										ELEC										MAT'L									
ARCH										CIVIL										CONC										STL										L & P										INST										P.S.										S.A.										FAC										ELEC										MAT'L									
ARCH										CIVIL										CONC										STL										L & P										INST										P.S.										S.A.										FAC										ELEC										MAT'L									
ARCH										CIVIL										CONC										STL										L & P										INST										P.S.										S.A.										FAC										ELEC										MAT'L									
ARCH										CIVIL										CONC										STL										L & P										INST										P.S.										S.A.										FAC										ELEC										MAT'L									
ARCH										CIVIL										CONC										STL										L & P										INST										P.S.										S.A.										FAC										ELEC										MAT'L									
ARCH										CIVIL										CONC										STL										L & P										INST										P.S.										S.A.										FAC										ELEC										MAT'L									
ARCH										CIVIL										CONC										STL										L & P										INST										P.S.										S.A.										FAC										ELEC										MAT'L									
ARCH										CIVIL										CONC										STL										L & P										INST										P.S.										S.A.										FAC										ELEC										MAT'L									
ARCH										CIVIL										CONC										STL										L & P										INST										P.S.										S.A.										FAC										ELEC										MAT'L									
ARCH										CIVIL										CONC										STL										L & P										INST										P.S.										S.A.										FAC										ELEC										MAT'L									
ARCH										CIVIL										CONC										STL										L & P										INST										P.S.										S.A.										FAC										ELEC										MAT'L									
ARCH										CIVIL										CONC										STL										L & P										INST										P.S.										S.A.										FAC										ELEC										MAT'L									
ARCH										CIVIL										CONC										STL										L & P										INST										P.S.										S.A.										FAC										ELEC										MAT'L									
ARCH										CIVIL										CONC										STL										L & P										INST										P.S.										S.A.										FAC										ELEC										MAT'L									
ARCH										CIVIL																																																																																																			

PFSF RAILROAD LINE  
PLAN & PROFILE- SHEET 9

PRIVATE FUEL STORAGE FACILITY  
PRIVATE FUEL STORAGE, LLC  
STONE & WEBSTER ENGINEERING CORPORATION  
DENVER, COLORADO

DENVER, COLORADO

 DRAWING NUMBER 05996-DY-41-A

DESIGN BY R. EDLER	DRAWN BY R. EDLER	SMWC J.O. NO.	FILE NO.
DSGN CHK'D BY D.W. HAYES	CHK'D BY W.B. SWIGERT	0599602	PFSDY41.DGN

9909230164

D-12