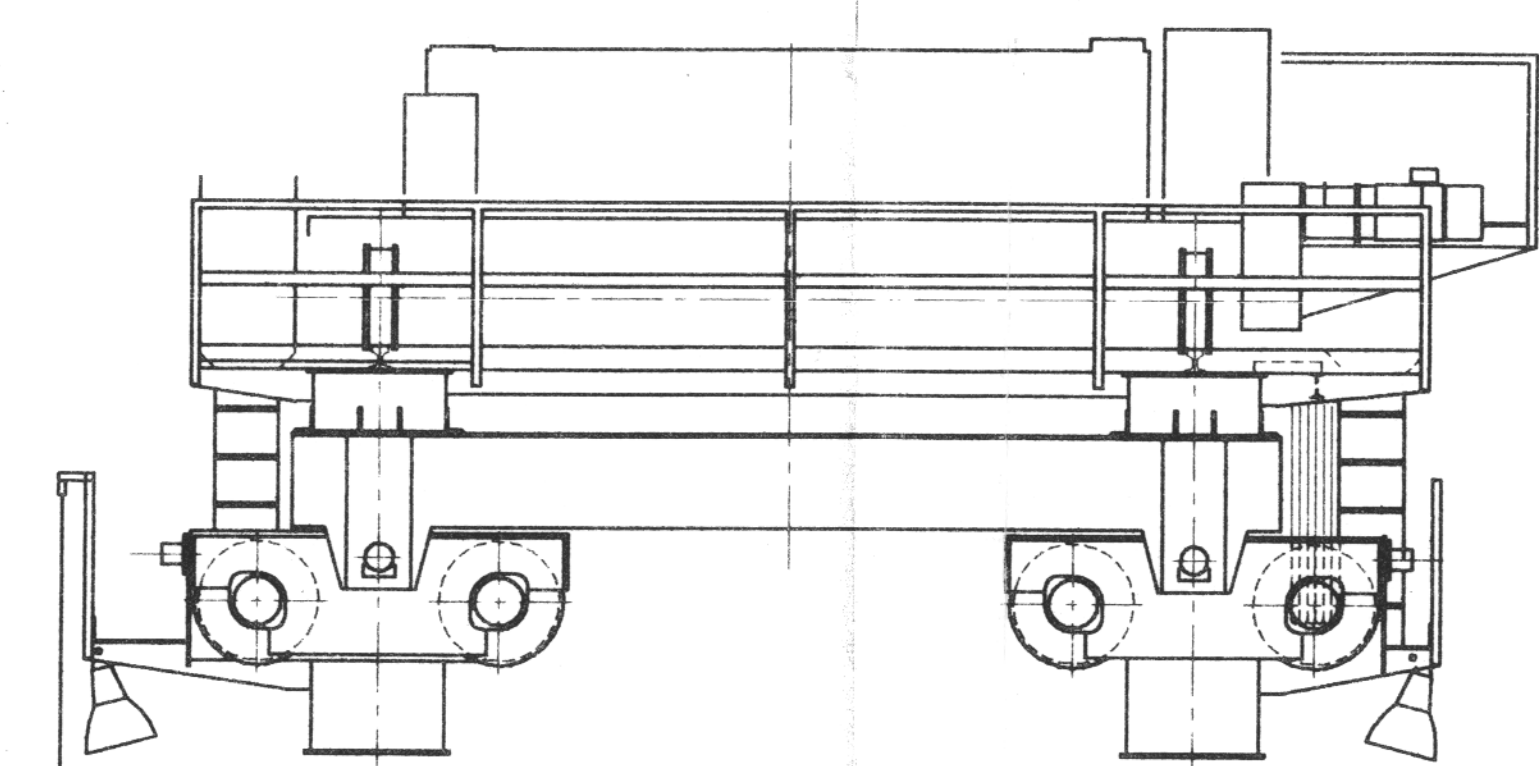
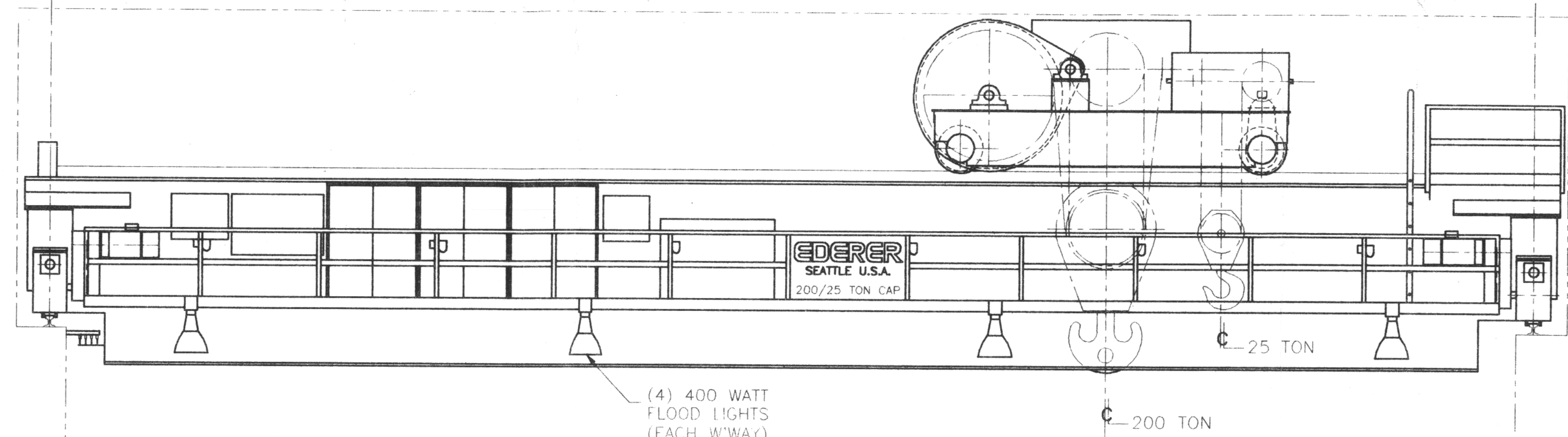
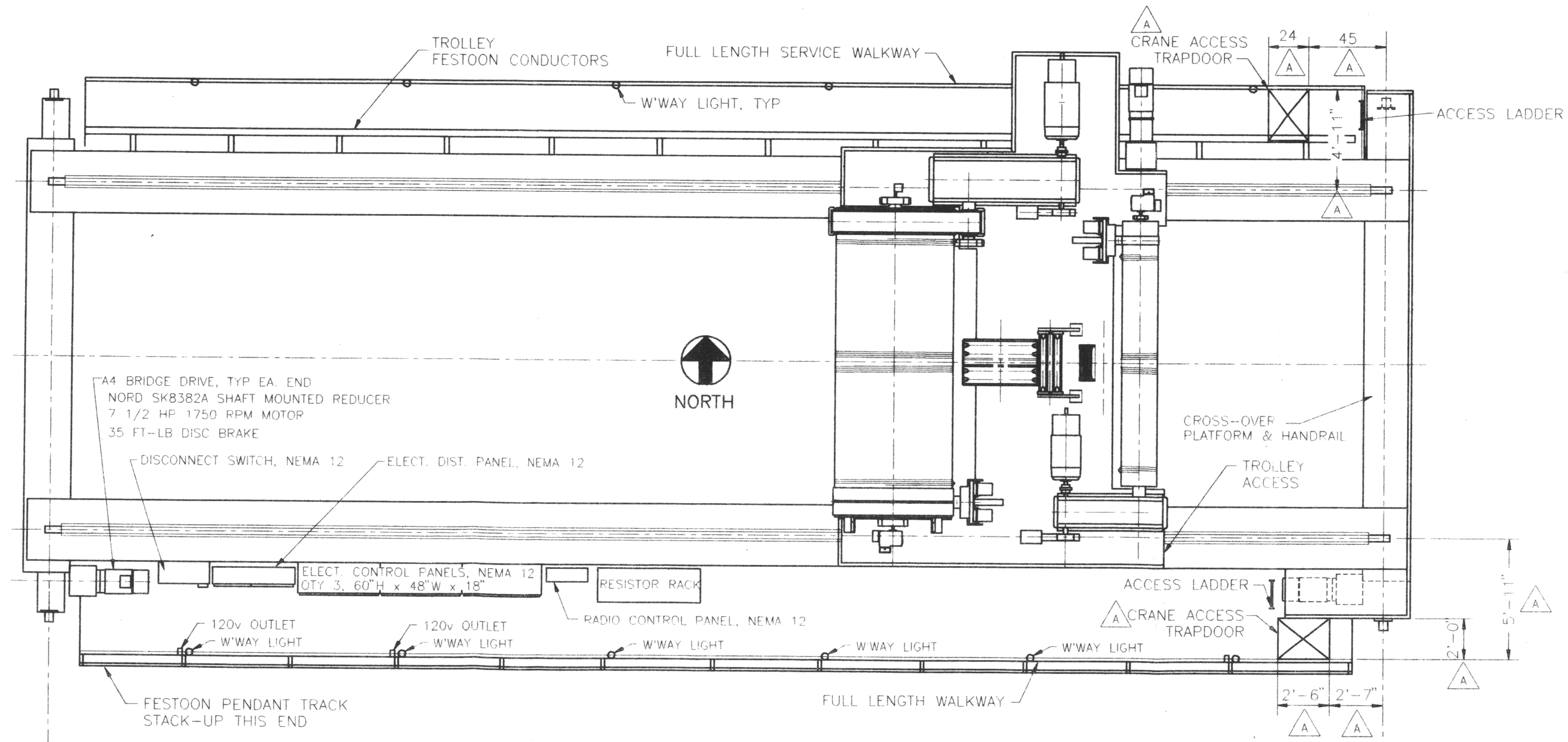


| REVISIONS | | | | | | | | | |
|-----------|--------------------|----------|-----|-----|-----|------|------|------|------|
| LTR | DESCRIPTION | DATE | BY | CHK | ENG | APPD | APPD | APPD | APPD |
| A | PER CUST. COMMENTS | 11/14/98 | JLF | SDS | JLF | EDA | JLF | | |



APERTURE CARD

9903020153

PRIVATE FUEL STORAGE FACILITY
P.O. NO. 0599602-023

THIS DOCUMENT AND THE CONTENTS THEREOF ARE THE PROPRIETARY TECHNOLOGY OF EDERER INCORPORATED AND MAY NOT BE USED OR DISCLOSED TO OTHERS WITHOUT WRITTEN PERMISSION OF EDERER INCORPORATED

| ITEM NO. | | DESCRIPTION | QTY. | MATERIAL | WEIGHT |
|---|---------------|--|---|-----------|--------|
| LIST OF MATERIALS | | | | | |
| ITEMS WITH SPECIAL QUALITY REQUIREMENTS | | 0 | SCALE 1/4" = 1'-0 | TOTAL WT. | — LBS. |
| ADVANCE ORDERED ITEMS | | COST ITEM NO. | <div>EDERER INCORPORATED</div> <div>E EDERER CRANES W WASHINGTON CRANES S STAR CRANES</div> | | |
| DRAWN | JLF | 10/26/98 | 200/25 TON BRIDGE CRANE BRIDGE ARRANGEMENT | | |
| CHECK | FEL | 10/28/98 | | | |
| ENG. | JLF | 10/29/98 | | | |
| APPD | FEL | 10/29/98 | | | |
| APPD | L.L. ANDERSON | 10/29/98 | | | |
| APPD | | D-36976 | | | |
| MACHINING TOLERANCES OR AS NOTED | | FRACTIONAL ± 1/64 DECIMAL ± 0.10 ANGLE ± 1°-0' | REV A | | |
| FIRST USED ON | | F-2621 | DWG. NO. SHIT | | |

9903020153 D-3 12-22 21/1/99 9903020153