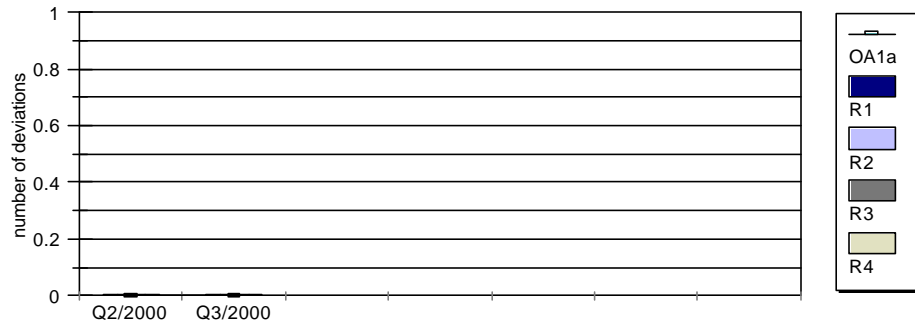


**OBJECTIVE**

OA1.a



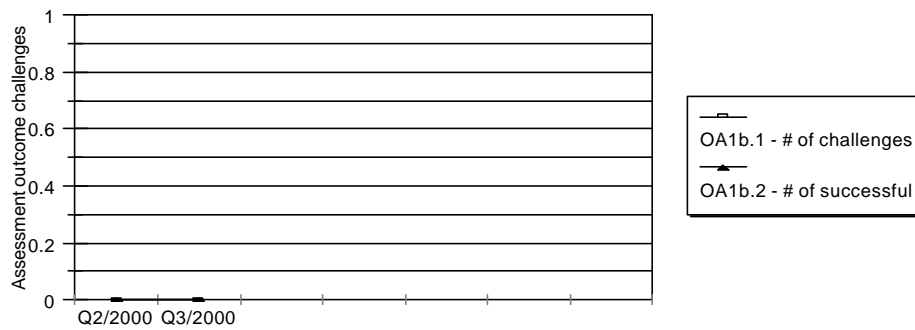
Comment: There were no deviations from the Action Matrix during the second and third quarters of CY 2000.

## Reactor Oversight Process

### Assessment Program

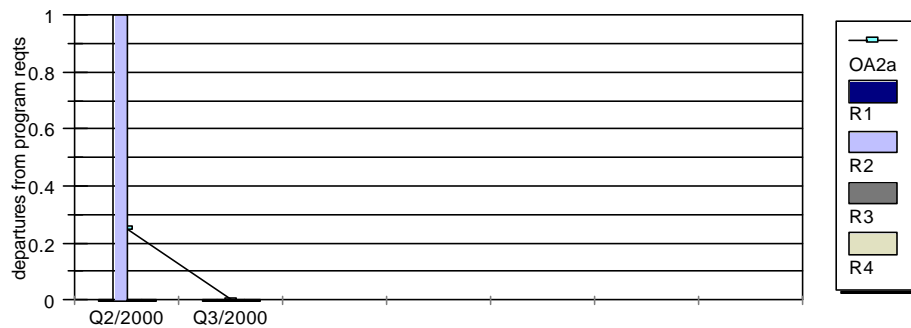
## Performance Metrics

OA1.b



Comment: There were no challenges to assessment outcomes during the second and third quarters of CY 2000.

OA2.a



Comment: Two performance indicators turned white in the mitigating systems cornerstone for Farley during 2Q/2000. This resulted in Farley's performance being considered in the Degraded Cornerstone column of the Action Matrix. The Assessment Follow-Up letter was signed by the cognizant DRP Branch Chief. In accordance with IMC 0305, the Assessment Follow-Up letter should have been signed by the regional Division Director.

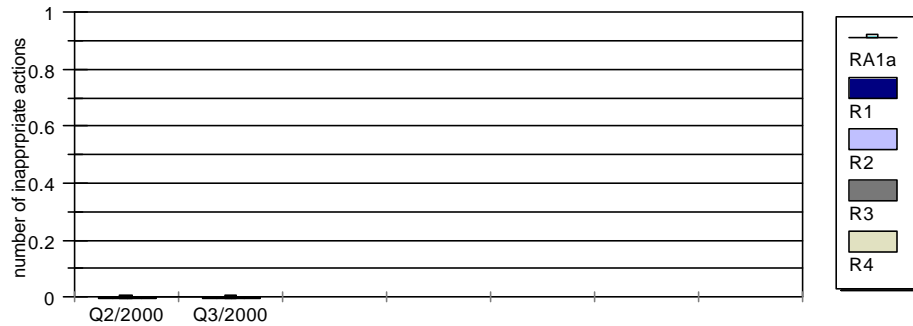
## Reactor Oversight Process

Assessment Program

## Performance Metrics

RISK-INFORMED

RA1.a

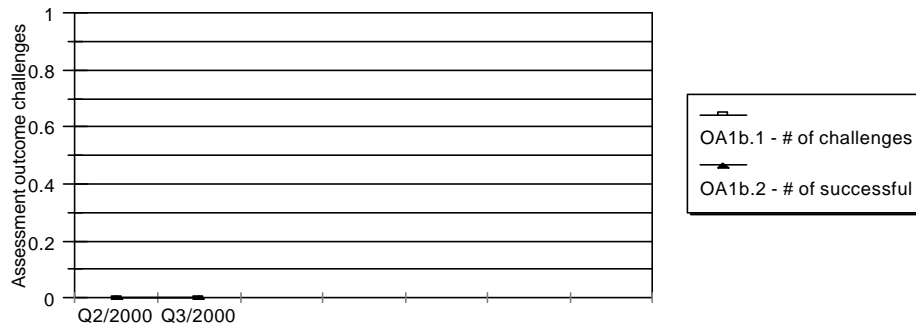


Comments: All actions taken by the regional offices during the second and third quarters of 2000 were consistent with program guidance.

## Reactor Oversight Process Assessment Program

## Performance Metrics

RA1.b see OA1.b



## **Reactor Oversight Process**

Assessment Program

## **Performance Metrics**

PREDICTABLE

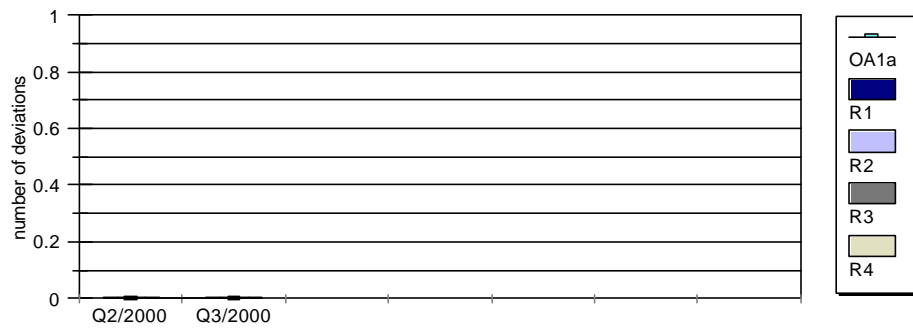
PA1.a

Comments: All actions taken by the regional offices during the second and third quarters of 2000 were consistent with program guidance.

## Reactor Oversight Process Assessment Program

## Performance Metrics

PA2.a - see OA1.a

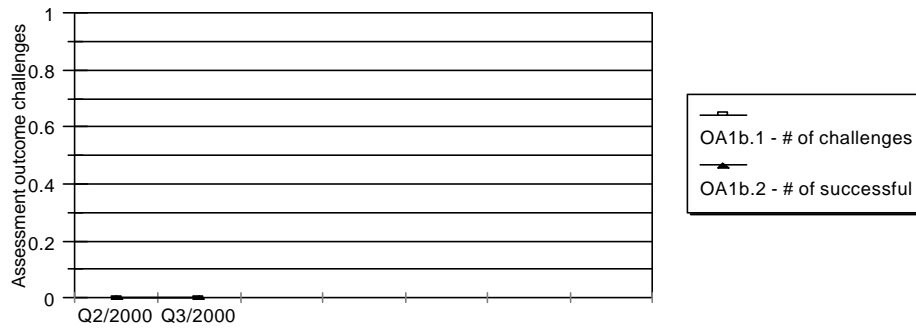


## Reactor Oversight Process

Assessment Program

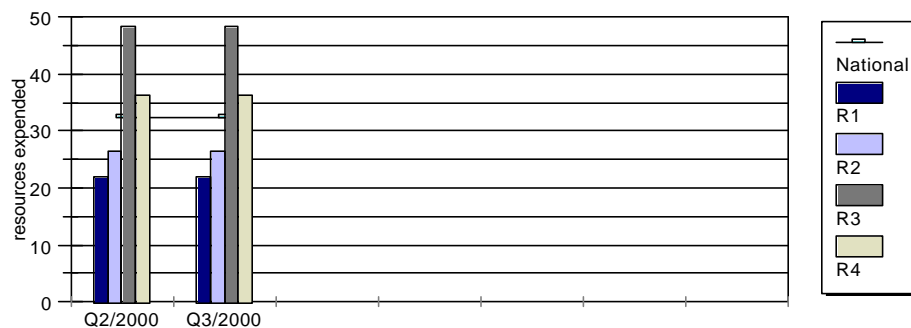
## Performance Metrics

PA2.b - see OA1.b





PA2.c



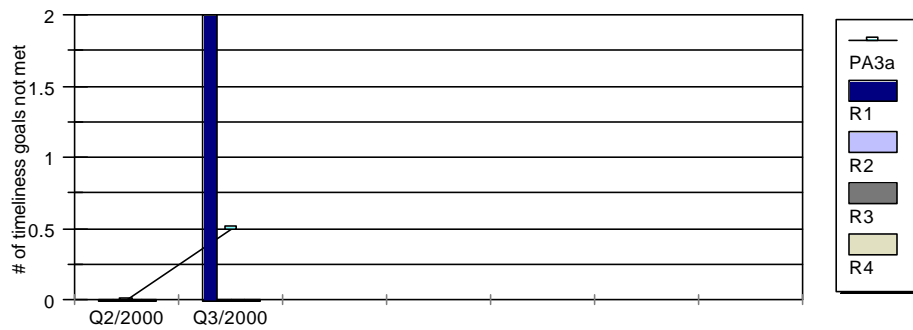
Comments: Graph reflects actual total hours per site charged to assessment during the quarter. The hours shown for Q2/2000 and Q3/2000 are calculated by dividing in half the total hours for the time period 4/2/2000 to 9/30/2000.

The numbers include time charged to both activity codes ASM (assessment) and SDP (significance determination process) even though SDP has been defined as an inspection activity for time reporting purposes. This was done in order to obtain a fair comparison to initial estimates of 192 hours per site annually which included both ASM and SDP activities.

## Reactor Oversight Process Assessment Program

## Performance Metrics

PA3.a



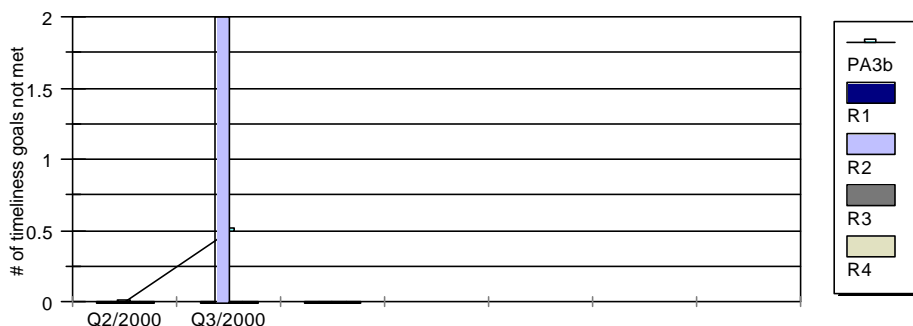
Comments: See comments on PA3b.

## Reactor Oversight Process

### Assessment Program

## Performance Metrics

PA3.b



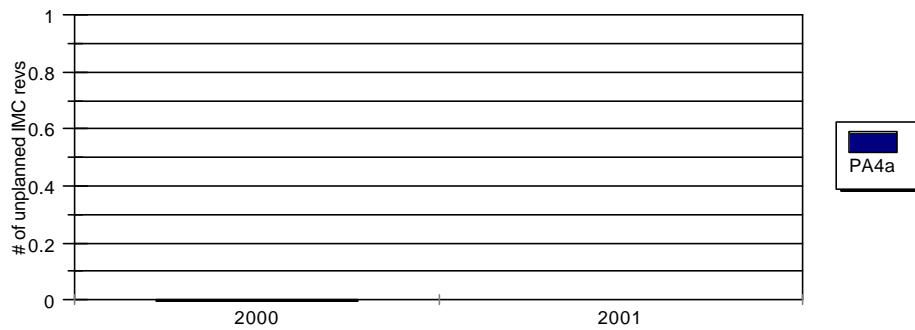
Comments:

Two of the 15 issues that warranted assessment followup letters during 3Q2000 did not have the letters issued and posted to the web within timeliness guidelines. These included the unplanned scrams PI for Indian Point 2 and the unplanned power changes PI for FitzPatrick, both which crossed thresholds into the white band. An assessment followup letter was issued to Indian Point 2 several weeks after the due date that addressed this PI issue and several other performance issues. An assessment followup letter was issued to FitzPatrick 2 weeks after the due date.

## Reactor Oversight Process Assessment Program

## Performance Metrics

PA4.a



Comments: There were no revisions to IMC 0305 or IMC 0350 during CY 2000.

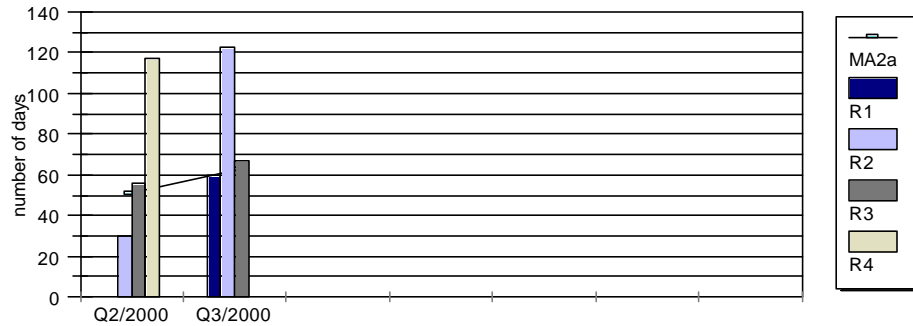
## Reactor Oversight Process

### Assessment Program

## Performance Metrics

### MAINTAINS SAFETY

#### MA2.a



Comments: There were no inputs to this metric for region I in 2Q/2000 and region IV for 3Q/2000.

## **Reactor Oversight Process**

Assessment Program

## **Performance Metrics**

EFFICIENT, EFFECTIVE, AND REALISTIC

EA1.a - see MA1.a which is on hold

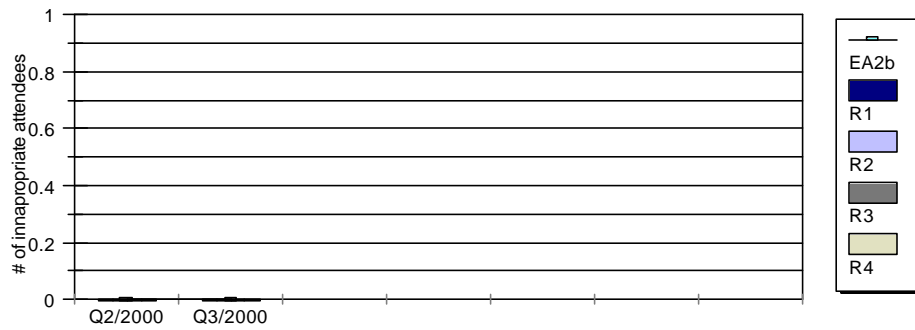
## **Reactor Oversight Process**

Assessment Program

## **Performance Metrics**

EA1.b - see MA1.b which is on hold

EA2.b





## **Reactor Oversight Process**

Assessment Program

EA3.a - see PA2.d

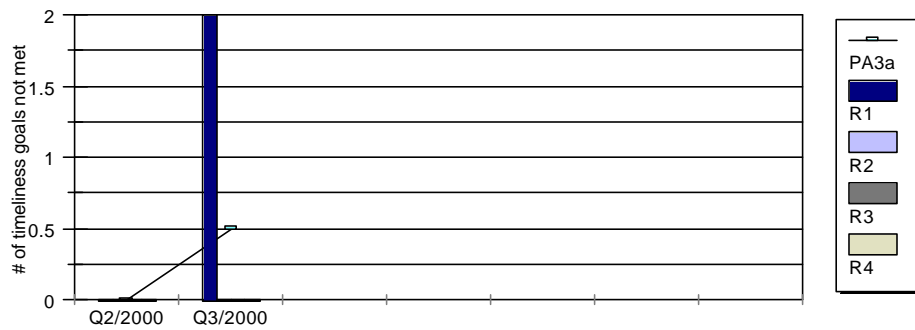
No graph

## **Performance Metrics**

## Reactor Oversight Process Assessment Program

## Performance Metrics

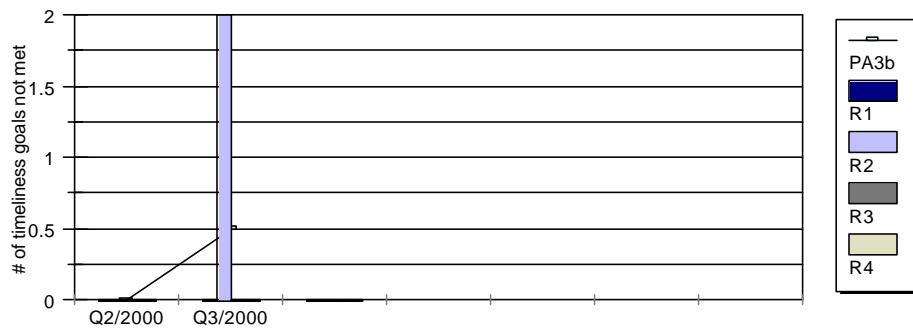
EA4.a - see PA3.a



## Reactor Oversight Process Assessment Program

## Performance Metrics

EA4.b - see PA3.b



## **Reactor Oversight Process**

Assessment Program

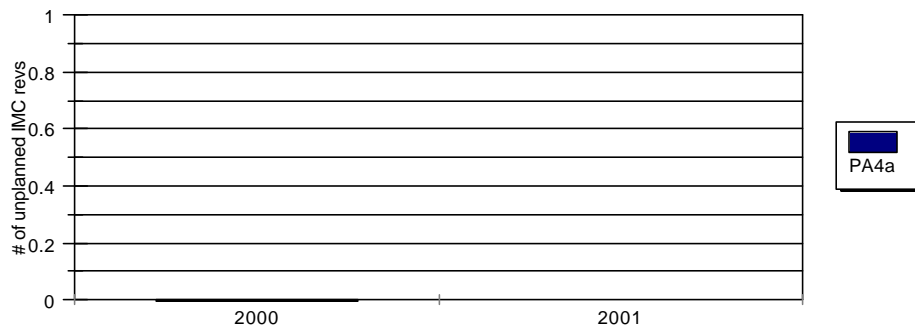
## **Performance Metrics**

EA4.c - see PA3.c which is on hold

## Reactor Oversight Process Assessment Program

## Performance Metrics

EA5.a - see PA4.a



## **Reactor Oversight Process**

Assessment Program

ENHANCES PUBLIC CONFIDENCE

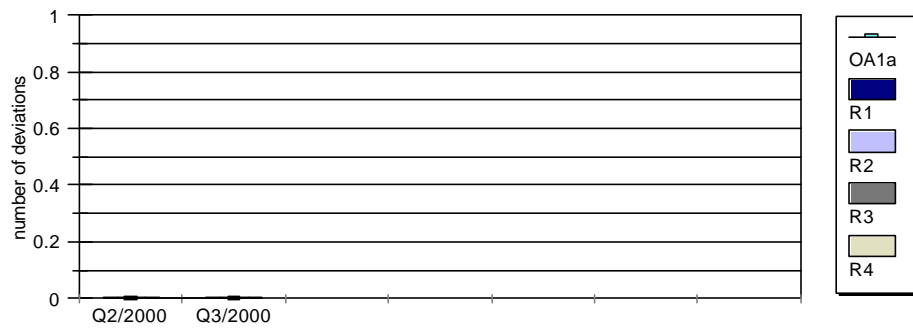
CA1

## **Performance Metrics**

## Reactor Oversight Process Assessment Program

## Performance Metrics

CA2.a - see OA1.a



## **Reactor Oversight Process**

Assessment Program

CA3.a & b - on hold

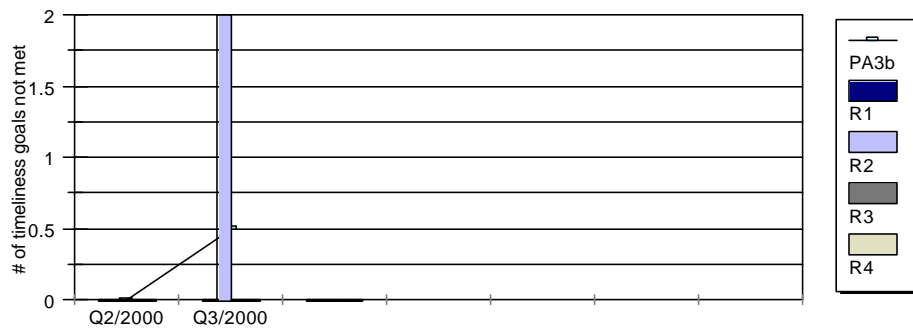
## **Performance Metrics**



## Reactor Oversight Process Assessment Program

## Performance Metrics

CA4.a - see PA3.b



## Reactor Oversight Process

Assessment Program

## Performance Metrics

CA5.a

No graph

Comments: For the purposes of this metric, the only data evaluated was those risk significant findings whose assessment letter was issued during the second and third quarters of CY2000. Fitzpatrick had a finding of low to moderate (white) risk significance which was captured in the End-of-Cycle letter dated May 18, 2000. This letter was consistent with the description of the finding as documented in the inspection report.

## **Reactor Oversight Process**

Assessment Program

## **Performance Metrics**

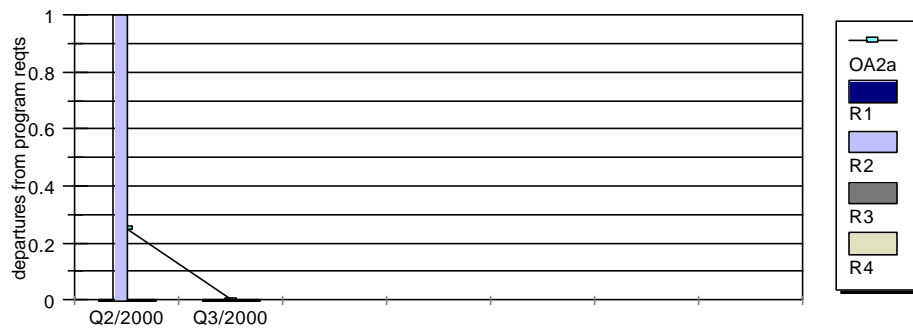
REDUCES UNNECESSARY REGULATORY BURDEN

BA1.a - on hold

## Reactor Oversight Process Assessment Program

## Performance Metrics

BA2.a - see OA2.a



## **Reactor Oversight Process**

Assessment Program

BA2.b - see PA1.a

## **Performance Metrics**