

United States
Nuclear Regulatory Commission



NRC Electronic Information Exchange (EIE) Instructional Guide

Quick Start Guide



Chief of the Information Officer
Information Management Division

November 17, 2000

Instructions for Electronic Information Exchange (EIE) with the U.S. Nuclear Regulatory Commission

In order to submit documents to the NRC server, encryption is required to ensure data integrity. This is accomplished through the use of digital signature technology. First time users must successfully complete steps 1 through 4 before being able to encrypt documents for submission. These are one-time, nonrecurring steps. Steps 5 through 8, however, are recurring and must be repeated each time a new document is submitted.

This document contains instructions for users of the following web browsers:

1.  **Microsoft® Internet Explorer (version 5.0)**
2.  **Netscape® Communicator or Navigator (version 4.6 or higher)**

Steps 1 and 2 are different for the two web browsers. Therefore, two sets of instructions are provided below. Following Steps 1 and 2, the instructions are the same no matter which web browser you are using. Should you have any questions regarding these instructions, please contact the Local Registration Authority LRA at (301) 415-6030 or by e-mail at [pgn1 @ nrc.gov](mailto:pgn1@nrc.gov).

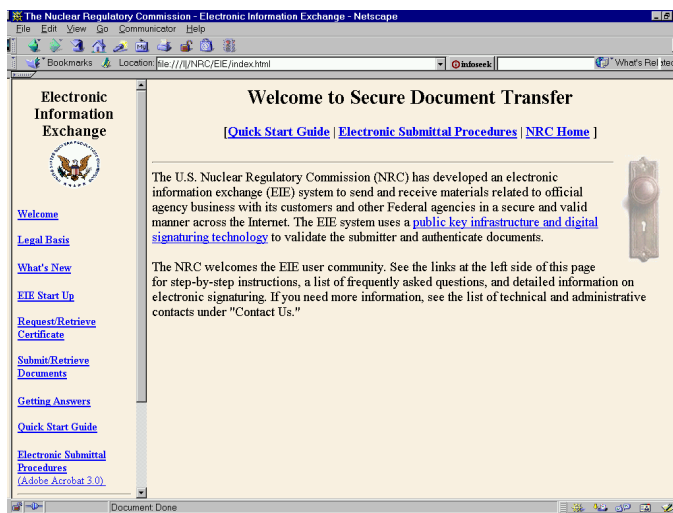


STEPS 1 and 2 for Microsoft® Internet Explorer (IE) Users (First Time Users Only)

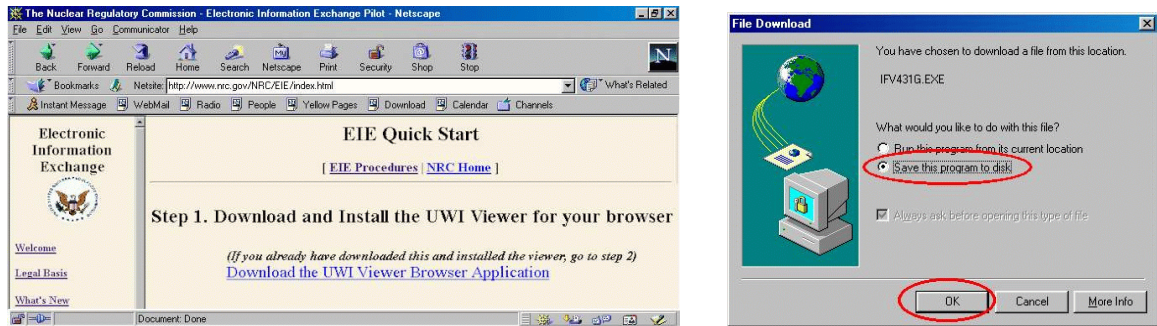


Step 1. Download and Install UWI Viewer Browser (First Time Users Only)

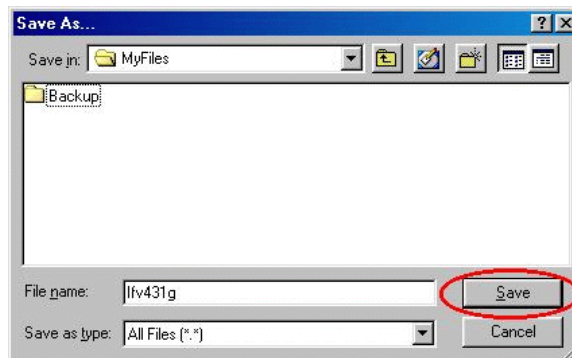
- a. Access the NRC EIE home page at <http://www.nrc.gov/NRC/EIE/index.html> and click on the EIE Start Up hyperlink.



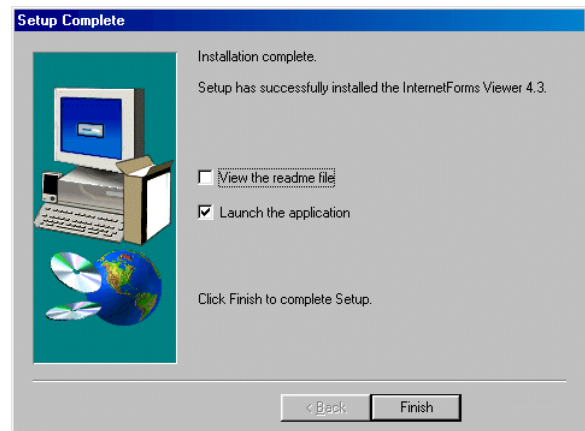
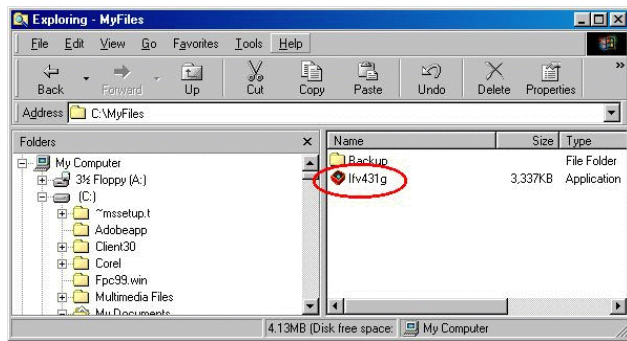
- b. From the EIE Start Up page, Go to Step 1 (on screen) and click on Download the UWI Viewer Browser Application. The File Download window appears. Select the radio button **Save this program to disk** and click on the **OK** button. The “Save As” window appears.



- c. Navigate to Drive C:\ and a temporary folder in which you wish to save the file, IFV431G.EXE. Click on the **Save** button. The download will take about 2-3 minutes.



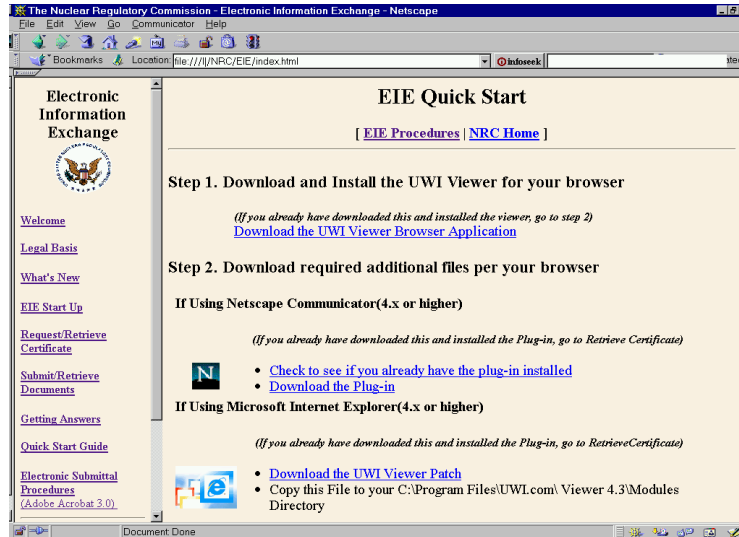
- d. Close your Explorer browser and exit all other windows applications before running the following setup program.
- e. Access Drive C:\ and go to the temporary folder in which the downloaded IFV431G.EXE file was saved. Install the UWI InternetForms Viewer Browser, version 4.3.1, by double-clicking the file icon. Follow the steps provided by the setup dialog. During the set-up, save the viewer application in a location where you can easily remember. The file default location is C:\Program Files\UWI.Com\Viewer 4.3\Modules\ directory. Installation is complete when the Setup Complete window appears. Click on the **Finish** button to complete installation.



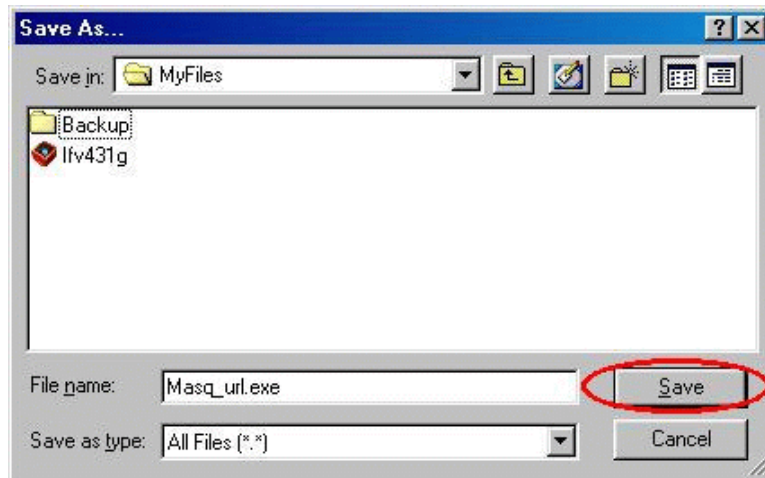
- f. Once the installation is complete, open your web browser, return to the EIE home page at <http://www.nrc.gov/EIE/index.html>, and continue to the next step.

Step 2. Download and Install UWI Viewer Patch (First Time Users Only)

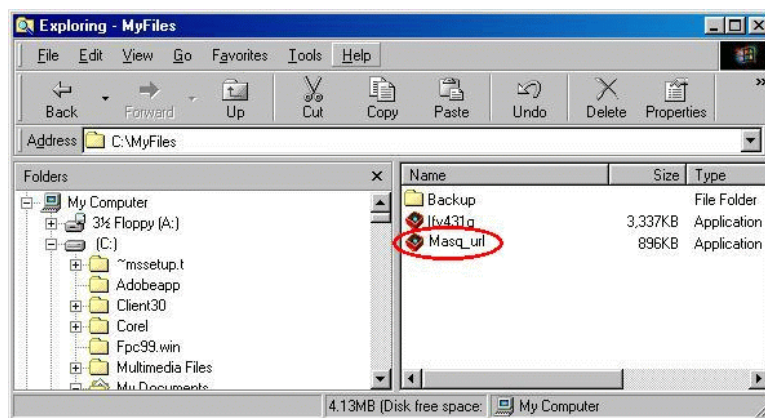
- a. From the EIE home page, click on the EIE Start Up link. From the EIE Quick Start page, go to Step 2 (on screen) to download the UWI Viewer Patch. Click on Download the UWI Viewer Patch. The "Save As" window appears.



- b. Navigate to Drive C:\ and the same folder in which you saved the IFV431G.EXE file. Click on the **Save** button.



- c. Close your Explorer browser and exit all other windows applications before running the following patch program.
- d. Access Drive C:\ and go to the folder in which the UWI Viewer Patch, MASQ_URL.EXE, was saved. Install the patch by double-clicking the file icon. Follow the steps provided by the setup dialog.



- e. After completing installation, restart your computer. Go to Step 3 (page 9).

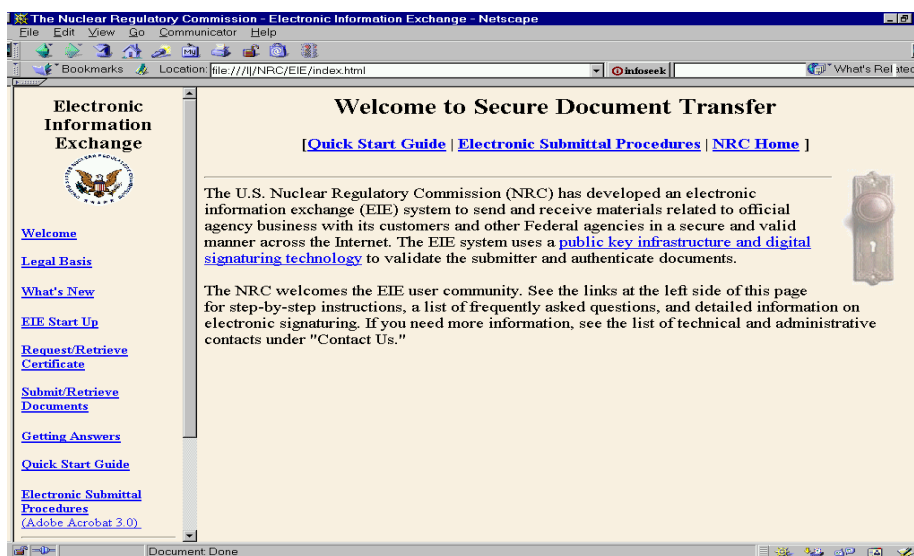


STEPS 1 and 2 for Netscape® Communicator Users (First Time Users Only)

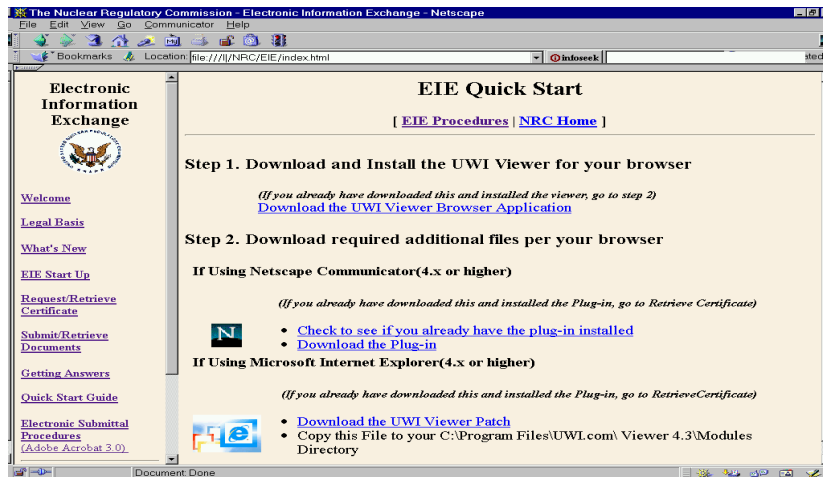


Step 1. Download Software/Plug-ins (First Time Users Only)

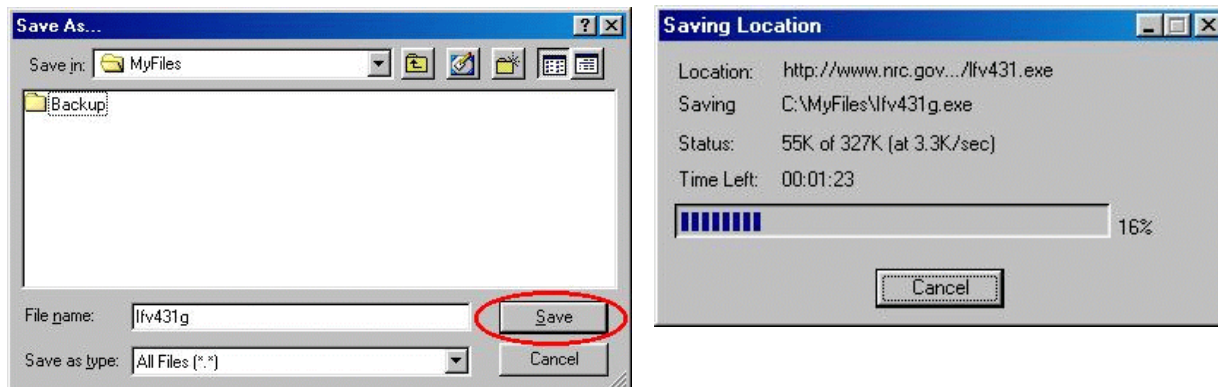
- a. Access the NRC EIE home page at <http://www.nrc.gov/NRC/EIE/index.html> and click on the EIE Start Up link.



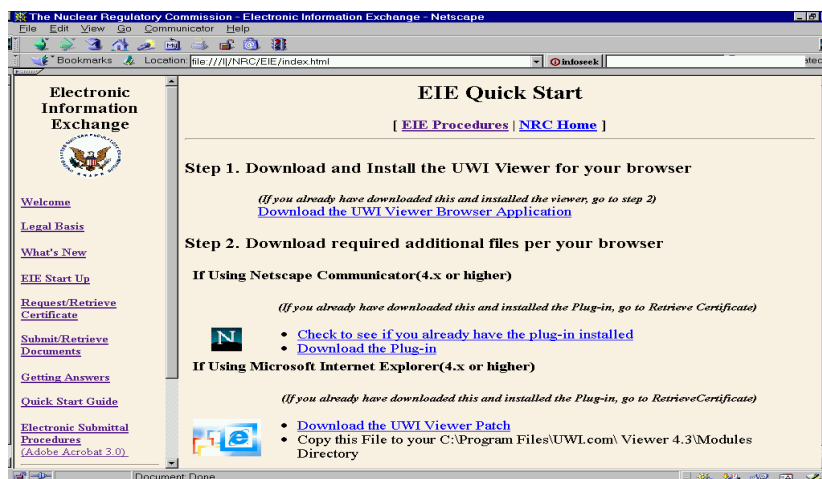
- b. Go to Step 1 (on screen) and click on Download the UWI Viewer Browser Application. The "Save As" window appears.



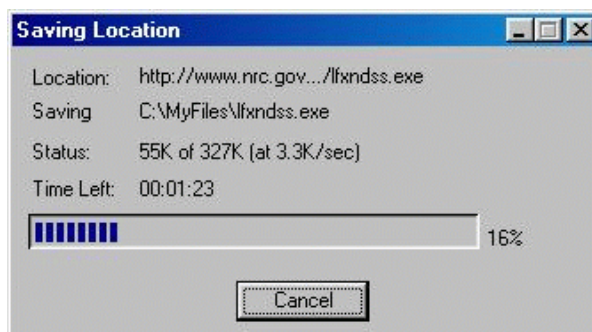
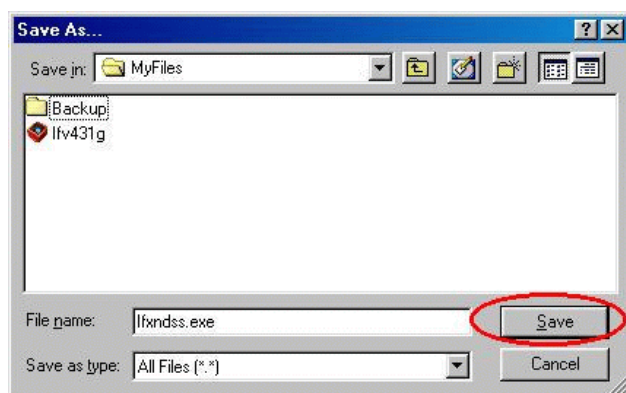
- c. Navigate to Drive C:\ and a temporary folder in which you wish to save the file, IFV431G.EXE. Click on the **Save** button. A saving location window will appear and will disappear once the download is complete. The download will take about 2-3 minutes. Return to the EIE home page.



- d. Go to Step 2 (on screen) and download the Netscape signaturing plug-in. Click on Download the Plug-in. The "Save As" window appears.

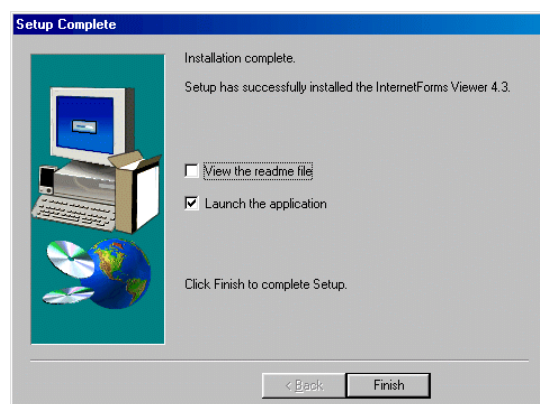
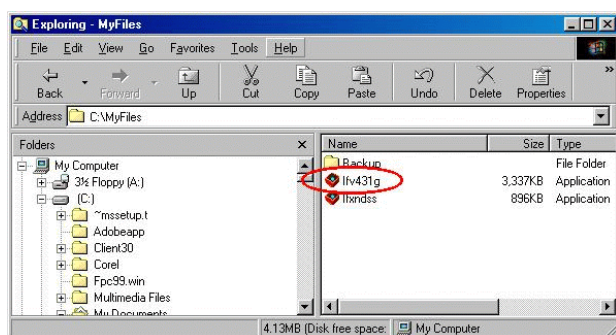


- e. Navigate to Drive C:\ and a temporary folder in which you wish to save the file, IFXNDSS.EXE. Click on the **Save** button. A saving location window will appear and will disappear once the download is complete. The download will take approximately one minute. Return to the EIE home page.



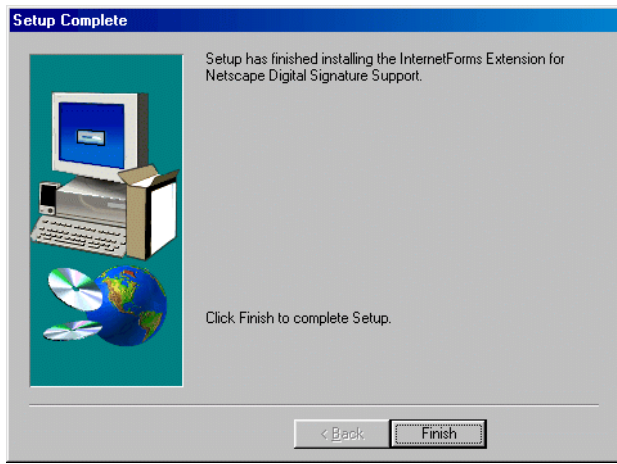
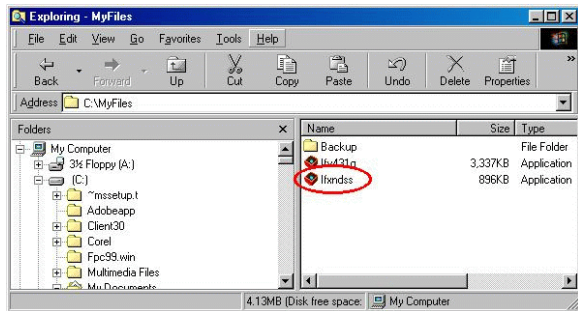
Step 2. Install Software/Plug-ins (First Time Users Only)

- a. Close your Communicator browser and exit all other windows applications before running the following setup programs.
- b. Access Drive C:\ and go to the temporary folder in which the downloaded plug-ins were saved. Install the UWI InternetForms Viewer Browser, version 4.3.1, IFV431G.EXE, by double-clicking the file icon. Follow the steps provided by the setup dialog. During the set-up, save the viewer application in a file location where you will can easily remember. The file default location is C:\Program Files\UWI.Com\Viewer 4.3\Modules\ directory. Installation is complete when the Setup Complete window appears. Click on the **Finish** button to complete installation.



- c. Access Drive C:\ and go to the temporary folder in which the plug-ins were saved. Install the file for InternetForms Extension for Netscape Digital Signature Support,

IFXNDSS.EXE, by double-clicking the file icon. Follow the steps provided by the setup dialog. Installation is complete when the Setup Complete window appears. Click on the **Finish** button to complete installation.



- d. After completing installation of both plug-ins, restart your computer. Go to Step 3.

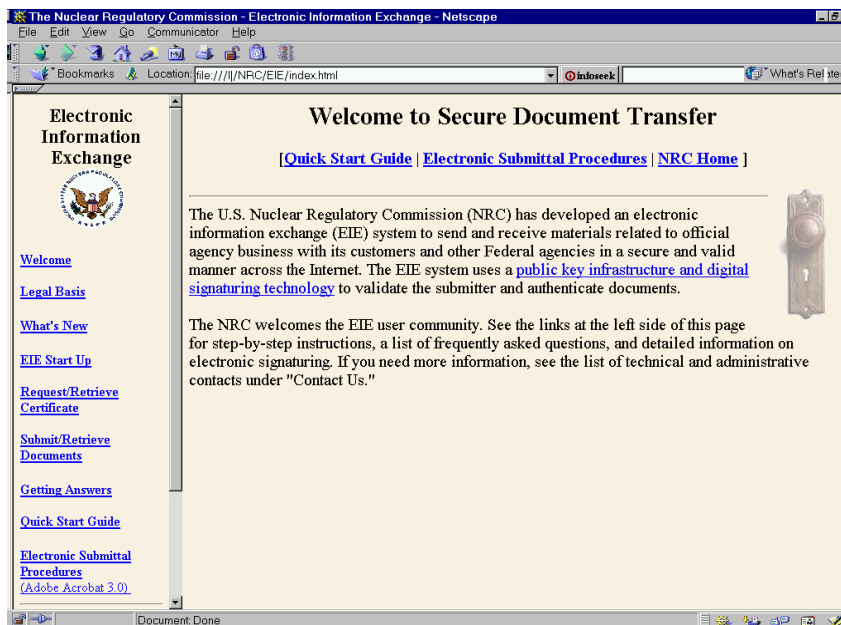


and  **STEPS 3 and 4 for Users of Either Web Browser** (First Time Users Only)

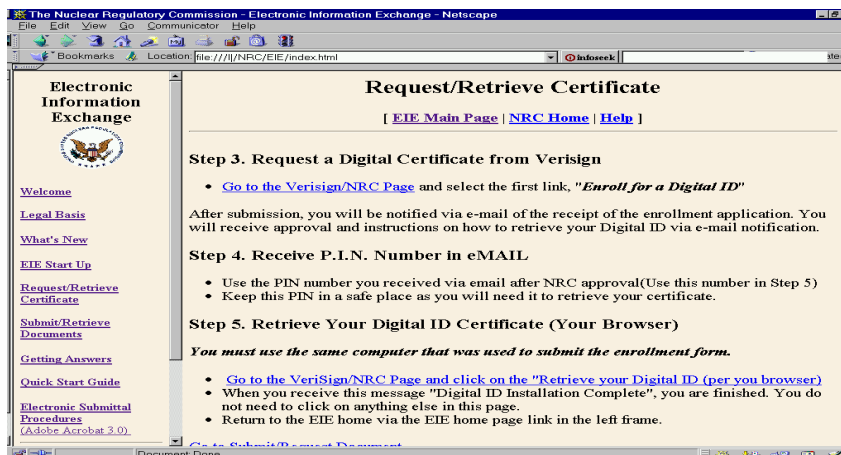


Step 3. Request a Digital Certificate (First Time Users Only)

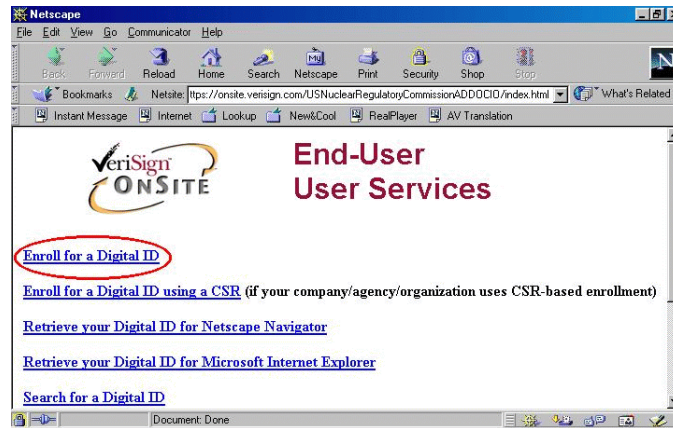
- a. Access the NRC EIE home page at <http://www.nrc.gov/NRC/EIE/index.html> and click on the Request/Retrieve Certificate link.



- b. From the Request/Retrieve Certificate page, go to “Step 3 Request a Digital Certificate from VeriSign” and click on Go to the VeriSign/NRC Page.



- c. From the VeriSign Onsite User Services page, click on the first link, Enroll for a Digital ID.



- d. Complete the on-line enrollment form and submit it by clicking on the **ACCEPT** button at the bottom of the screen. You will then be prompted to setup your password that protects your private key.

OnSite Subscriber Enroll - Netscape

File Edit View Go Communicator Help

Back Forward Reload Home Search Netscape Print Security Shop Stop

Bookmarks Netsite: verisign.com/USNuclearRegulatoryCommissionADD/OCIO/userEnrollINS.htm What's Related

Instant Message Internet Lookup New&Cool RealPlayer AV Translation

VeriSign
ONSITE

**Digital ID Enrollment for
U.S. Nuclear Regulatory
Commission
ADD/OCIO**

To enroll for a Digital ID, complete this enrollment form and click the Accept button.

Step 1: Digital ID Information

The information that you enter here is used to create the public portion of your Digital ID. This information can be viewed by anyone who views your Digital ID. Please complete all of the fields, and use only the English alphabet with no accented characters.

First Name Middle Initial

Last Name

Email Address

Title

PIN

Organization

Step 2: Choose a Challenge Phrase

The challenge phrase is a word or phrase that you will use if you need to revoke (cancel) or replace your Digital ID. Choose a word or phrase that you will remember, but that would be unfamiliar to anyone attempting to impersonate you. Make sure you remember your Challenge Phrase! If you write it down, be sure to store it in a safe place. Without your challenge phrase, your Digital ID cannot be revoked if it is compromised or lost.

Please do not include any punctuation in your challenge phrase, and use only the English alphabet with no accented characters.

Challenge Phrase

Step 3: Enter Comments

If you wish, enter a comment to the Administrator. This comment will not be included in your Digital ID.

In some cases, your Administrator will instruct you to enter *Shared Secret* information in this field. The Administrator uses this shared secret (information known only to you and the Administrator) to verify that it really is you submitting the application, and not someone pretending to be you.

Step 4: Digital ID Subscriber Agreement

By applying for, accepting, or using a Digital ID you are agreeing to the terms of the [VeriSign Subscriber Agreement](#) ("Agreement"). Your organization requires you to follow this Agreement. By clicking the accept button below, you indicate your acceptance of this Agreement. If you do not agree to the terms of this Agreement, do not complete this application, click accept, or use the Digital ID.

When you submit this Digital ID application by clicking Accept, your browser will generate your public and private keys. The browser will also prompt you to set up a password to protect your private key and to store it on a diskette. Your private key is a secret file that you will use to digitally sign or encrypt e-mail. Your public key will become part of your Digital ID—your business associates can use it to verify your digital signature or to send you encrypted e-mail.

Your private key and password are stored on your computer and are not transmitted to the Certification Authority that creates your Digital ID. When your Digital ID is ready, you will receive e-mail that includes instructions for retrieving and installing it.

If you have completed this enrollment form, click Accept to submit this request to the Administrator.

Optional: Choose Your Encryption Strength

The security of your Digital ID depends in part upon the size of encryption key used. Larger keys are more secure. If you use the standard version of Netscape Navigator or Communicator, select a key size of 512. If you use the US-only version, you can select 768 or 1024 for greater security.

1024 (High Grade)

ACCEPT

Please [contact your Administrator](#) with questions about Digital IDs and this form.

Document: Done

NRC Digital ID Enrollment Form

- e. Only Netscape users will be prompted to enter a unique password in the Certificate Database password entry dialog. You will need to re-enter it for confirmation and then click on the **OK** button. The password may be any length. Be sure to use a password

that is easy to remember. If necessary, write it down and store it in a safe place as you will need it each time you use your Digital ID.

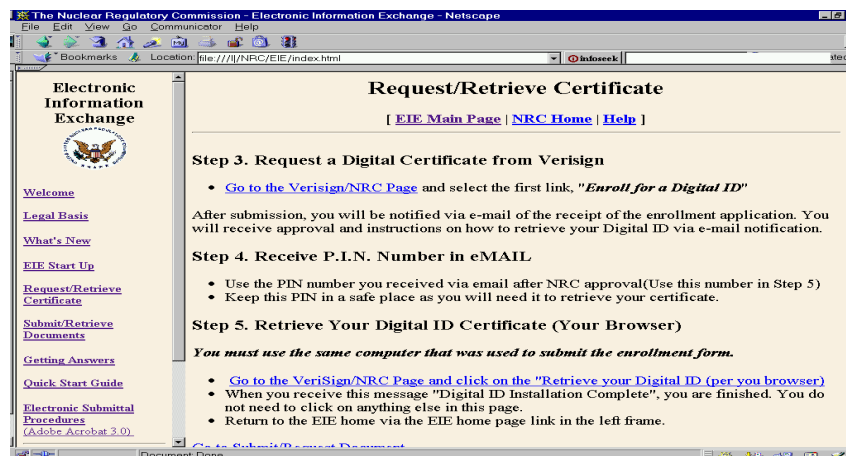


- f. After submission, you will be notified via e-mail of the receipt of the enrollment application. You will receive an approval notification e-mail with instructions on how to retrieve your Digital ID. The e-mail will contain a personal identification number (PIN). Copy the **PIN** for use in Step 4.

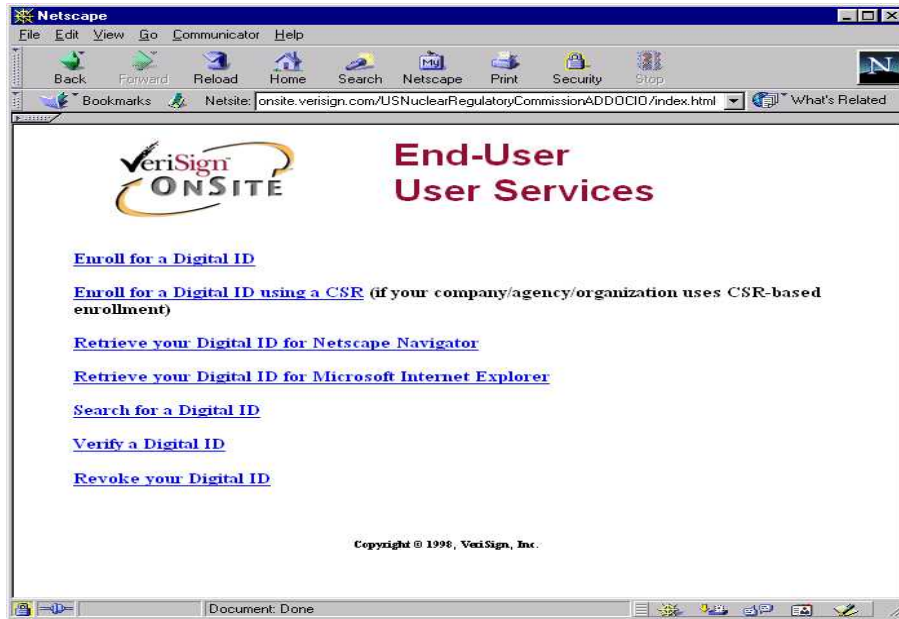


Step 4. Retrieve Your Digital ID Certificate (First Time Users Only)

- a. Access the NRC EIE home page at <http://www.nrc.gov/NRC/EIE/index.html>. Click on the Request/Retrieve Certificate link. Note: Participants must use the same computer used to submit the enrollment form.
- b. Scroll down in your browser to "Step 5, Retrieve your Digital ID for (Your Browser)," and click on the first link, Go to the VeriSign/NRC Page Retrieve your Digital ID per your browser.

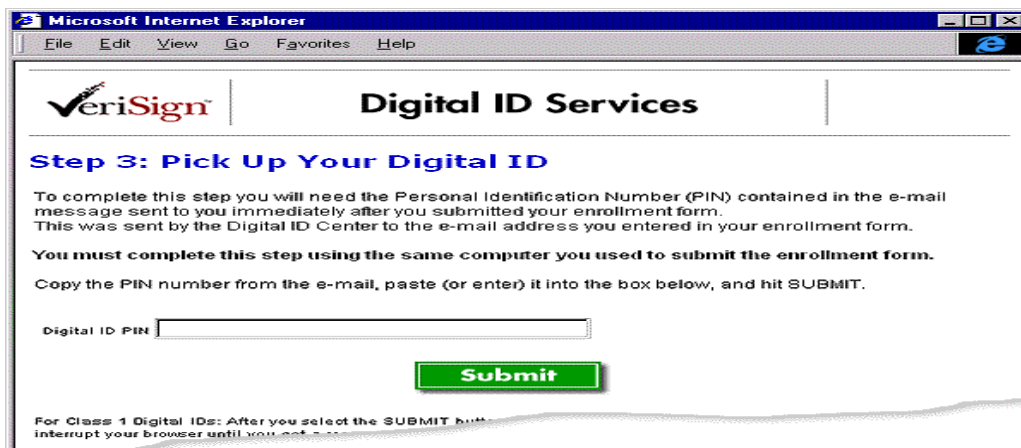


- c. Click on the link representing your browser. You will receive a "Congratulations" message when the install is successfully completed.



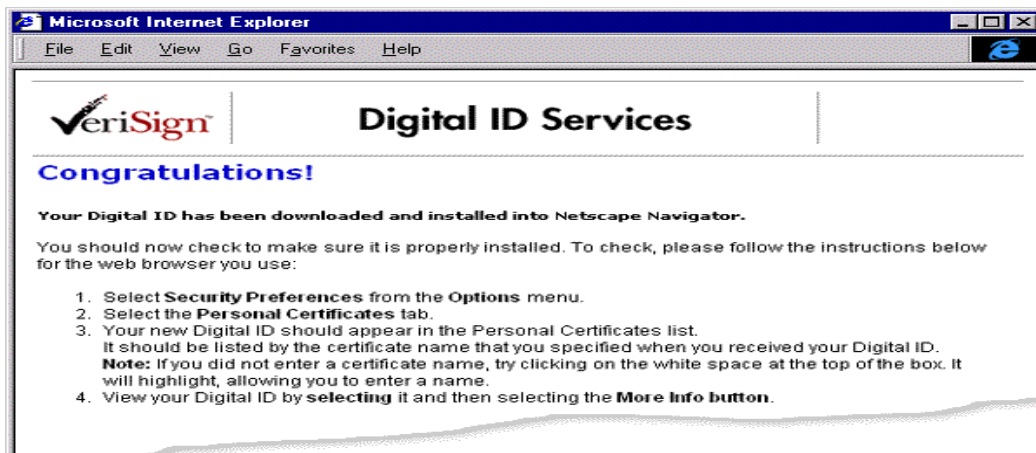
NRC VeriSign OnSite Host Page

- d. The “Pick Up Your Digital ID” screen appears. Paste the **PIN** from the digital certification approval notification (e-mail) and click on the **Submit** button to install the Digital ID in your browser.



Pick Up Your Digital ID

You will receive a “Congratulations” message when the install is successfully completed.



Successful Download and Installation

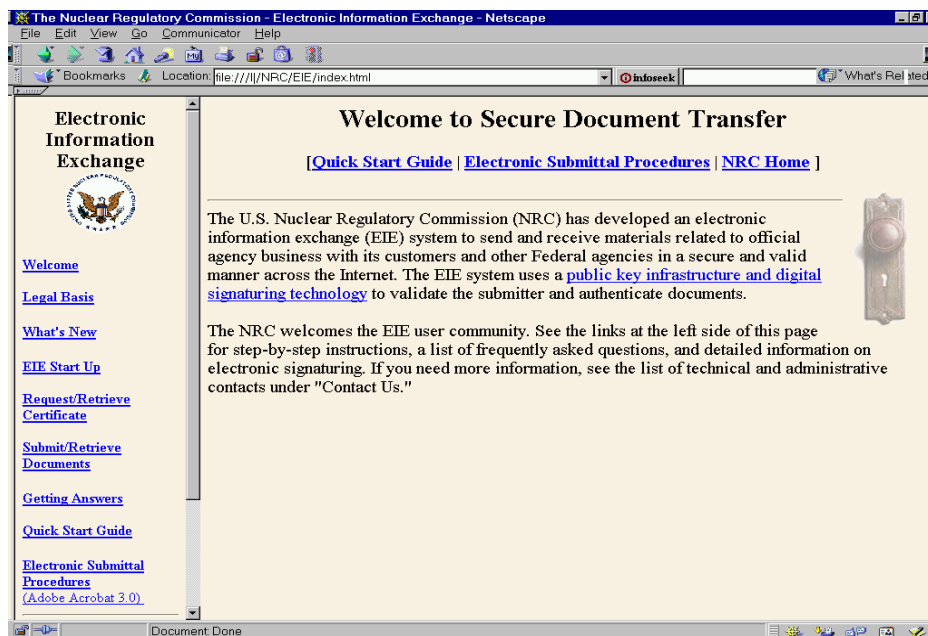


and STEPS 5 – 8 for Users of Either Web Browser (Recurring Actions)

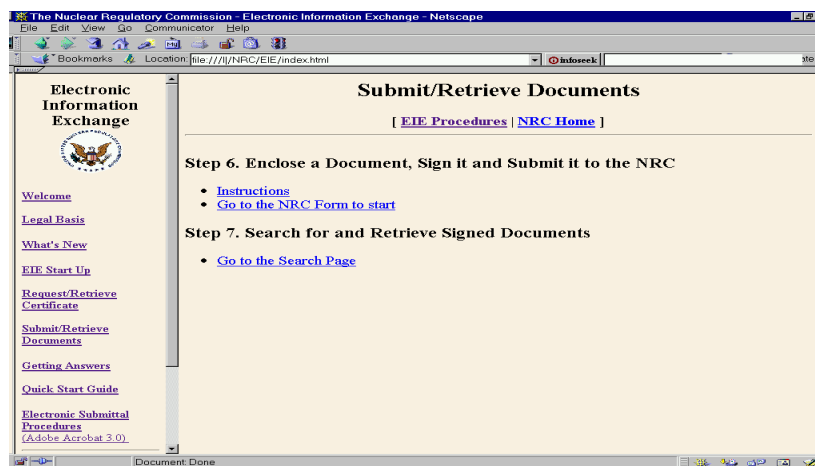


Step 5. Submit Documents to the NRC (Recurring)

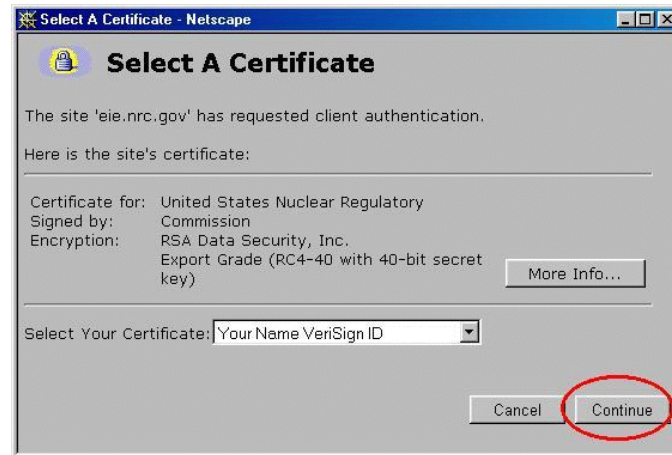
- a. Access the NRC EIE home page at <http://www.nrc.gov/NRC/EIE/index.html>. Click on the Submit/Retrieve Documents link.



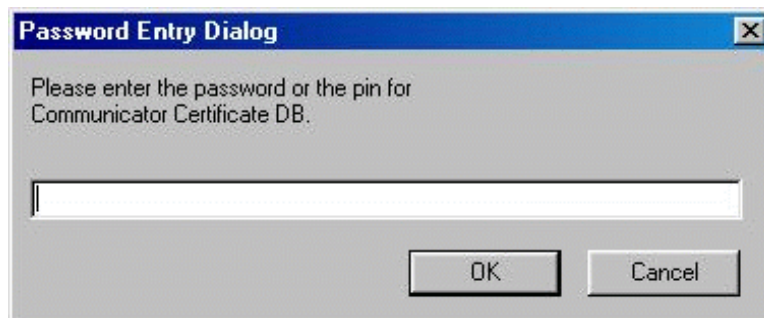
- b. Go to “Step 6 Enclose a Document, Sign it and Submit it to the NRC,” and click on the second link listed, Go to the NRC Form to start. The “Select a Certificate” window now appears.



- c. Select your NRC issued certificate in the Select Certificate window and click on the **Continue** button.



- d. The Password Entry dialog appears (Netscape users only). Enter your password for the Certificate Database and click the **OK** button. You will be prompted to re-enter it for confirmation; click the **OK** button again.



- e. A Security Information screen now appears, click on the **Continue** button. The UWI InternetForms viewer is loaded and the NRC EIE Form is now displayed.

The left screenshot shows a 'Security Information' dialog box with the following text: "You have requested a secure document. The document and any information you send back are encrypted for privacy while in transit. For more information on security choose Document Information from the View menu." It includes a checkbox for "Show This Alert Next Time" and "Continue" and "Cancel" buttons.

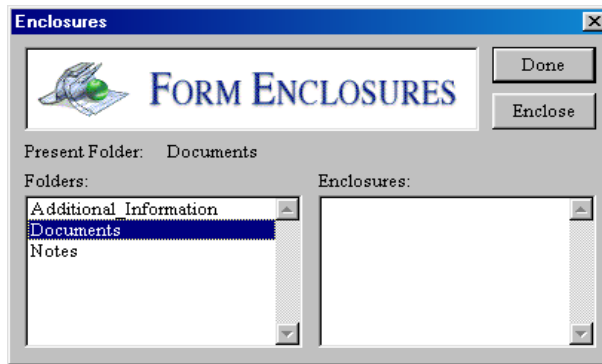
The right screenshot shows the 'Nuclear Regulatory Commission Electronic Information Exchange' form. It includes fields for Docket Number, License Number, and From Control Vocabulary List. The form is divided into sections: AUTHOR INFORMATION (Affiliation, Name, eMail), ADDRESSEE INFORMATION (Affiliation, Name, eMail), FILE INFORMATION (File Type, Document Date, Title, Availability, Est. Page Count, Doc. Sensitivity, Comments), and SIGN & SUBMIT (Digital Signature, Click to Digitally Sign Document(s), Submit / Update, Submit Signed Documents to NRC). There is also a 'Click to Attach a Document(s)' button.

Step 6. Enclose Document(s) (Recurring)

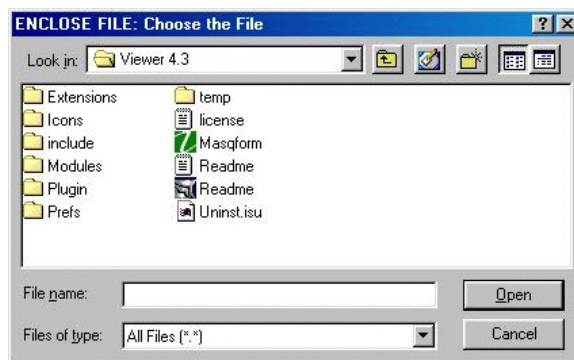
- a. On the form, click on the **Click to Attach a Document(s)** button. The Enclosures dialog opens.

The 'Enclosures' dialog box shows the 'Present Folder' as 'Additional_Information'. Under 'Folders:', there is a list with 'Additional Information', 'Documents', and 'Notes'. The 'Documents' folder is selected. There are 'Done' and 'Enclose' buttons.

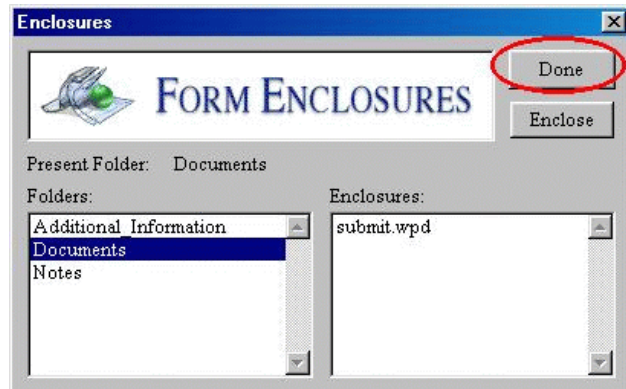
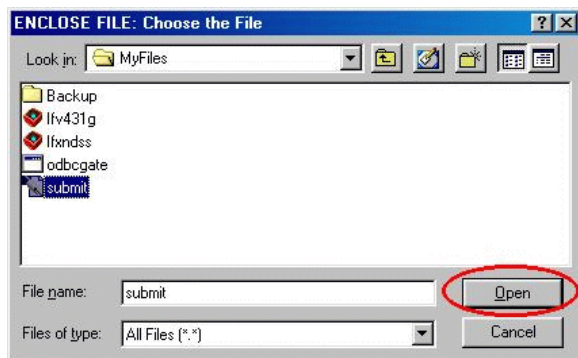
- b. Select a folder from the Folders window on the left of the dialog box. For documents, select the "Documents" folder.



- c. Click on the **Enclose** button on the upper right of the Enclosures dialog box. The Enclose File dialog now appears.



- d. Navigate to the drive and/or folder where the document to be submitted resides and choose the file.
- e. Select a document and click on the **Open** button. The document is added to the Enclosures window on the right side of the Enclosures dialog. When you finish attaching documents, click on the **Done** button to close the Enclosures dialog.





Step 7. Sign Document(s) (Recurring)

- a. With the NRC EIE Form open, fill in the required information for each field on the form. All fields require completion except the Comment field which is optional. Passing the mouse pointer over each field will show a pop-up screen to describe what information should be entered into the selected field.

Documents submitted to the NRC should be addressed in the following manner.

ADDRESSEE INFORMATION

Affiliation	U.S. Nuclear Regulatory Commission
Name	Document Processing Center
Email	DocProcessingCenterX@nrc.gov

Display Extract Remove Sign & Submit a Document(s)

Nuclear Regulatory Commission
Electronic Information Exchange

Docket Number 50.54(f) * License Number 1234-5678

AUTHOR INFORMATION

Affiliation Your Company Name *
Name John Doe *
eMail john.doe@company.com

ADDRESSEE INFORMATION

Affiliation U.S. Nuclear Regulatory Commission
Name A. B. Copper
eMAIL abc123@nrc.gov

FILE INFORMATION

File Type WordPerfect 7/8/9 *
Document Date *
Title
Availability Non-Publicly Available
Est. Page Count 15
Doc. Sensitivity Public - Non-sensitive/Unclassified
Comments Submission response

SECOND SIGNATURE

2nd Signature Required ? ☐ Yes ☒ No

SIGN & SUBMIT

Digital Signature *
John Doe, john.doe@company.com
Submit / Update *
Submit Signed Documents to NRC

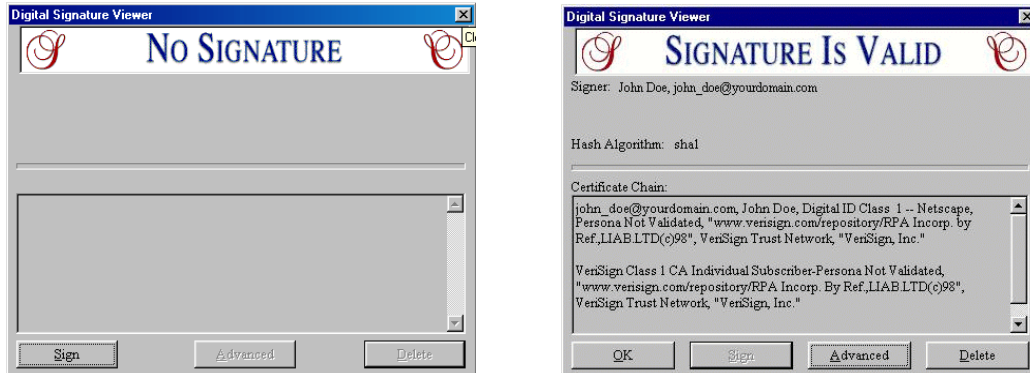
EIE Submittal Form 3.3g Nuclear Regulatory Commission Nov. 28, 2000
* = Required to be filled in Date Received by NRC

- b. Once the required fields on the form are completed, click on the **Click to Digitally Sign Document(s)** button.

Click to Digitally Sign Document(s)

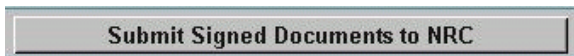
- c. The Digital Signature Viewer dialog appears displaying the caption "No Signature." Click on the **Sign** button. (Netscape users will need to enter their password). When the

signature information is displayed, click on the **OK** button to sign the form.

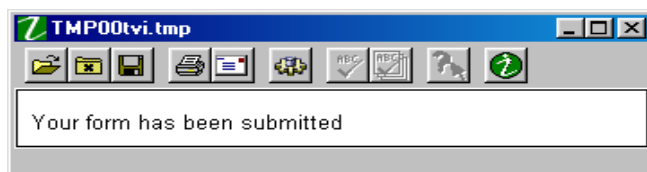


Step 8. Submit Document(s) (Recurring)

- a. With the NRC EIE Form open, click on the **Submit Signed Documents to NRC** button. The cursor changes to a black and white color wheel as the Internet connection is attempted. Depending on the speed of your Internet connection and the size of the file, this may take approximately 4-6 minutes.



- b. Once the connection is established and the upload is complete, the browser displays a window that states "Your Form Has Been Submitted." After you are finished submitting, return to the NRC EIE Home Page.



- c. Exit the EIE Home page and close your browser.

Terminology

Certificate

A certificate is a unique digital identification that can be used to verify the identity of a person, web site, or JavaScript/Java Applet. The certificate always includes a public key, the name of the entity it identifies, an expiration date, the name of the certificate authority (CA) that issued the certificate, the digital signature of the CA, and a serial number.

Certificate Database

A small database used by your browser to store your digital identification information. You cannot access or view it using any other program.

Certificate Password

A unique password that a user selects to access the Certificate Database in user's browser.

Signaturing Plug-in

An add-on to your browser that allows for a digital signature, or digital identification.

