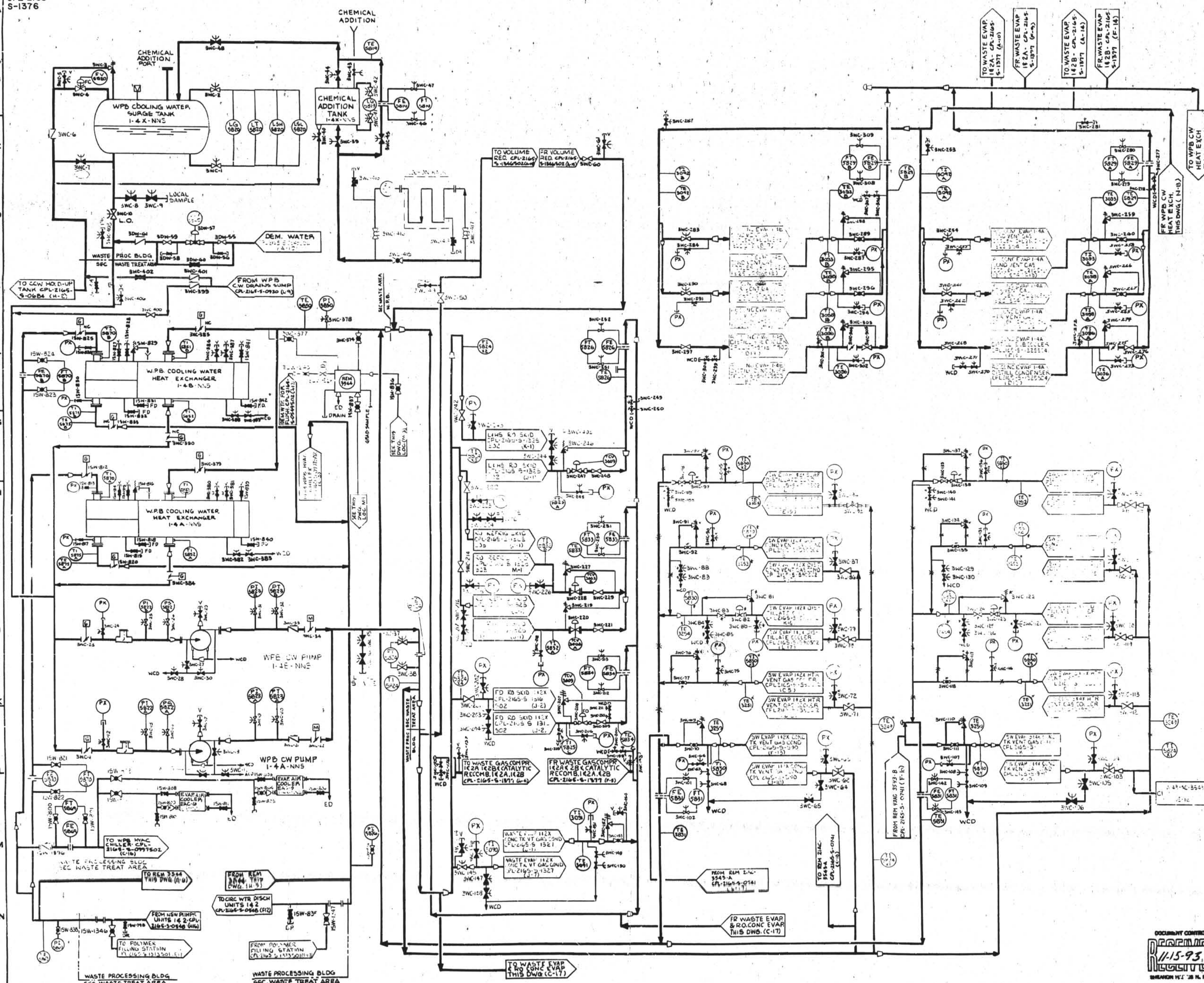


CPL-2165
S-1376

FOR CONTINUATION AT WCD SEC CPL-2165-S-1376



10	INCORPORATED IN THIS REVISION: PCR-1444 (P1)	L	E	M	P
9	INCORPORATED IN THIS REVISION: PCR-6727 (E6)	L	E	M	P
8	INCORPORATED IN THIS REVISION: PCR-6727 (E6)	L	E	M	P
7	INCORPORATED IN THIS REVISION: PCR-6727 (E6)	L	E	M	P
6	INCORPORATED IN THIS REVISION: PCR-6727 (E6)	L	E	M	P
5	INCORPORATED IN THIS REVISION: PCR-6727 (E6)	L	E	M	P
4	INCORPORATED IN THIS REVISION: PCR-6727 (E6)	L	E	M	P
3	INCORPORATED IN THIS REVISION: PCR-6727 (E6)	L	E	M	P
2	INCORPORATED IN THIS REVISION: PCR-6727 (E6)	L	E	M	P
1	INCORPORATED IN THIS REVISION: PCR-6727 (E6)	L	E	M	P

CAROLINA POWER & LIGHT COMPANY
SHEARON HARRIS NUCLEAR POWER PLANT

SIMPLIFIED FLOW DIAGRAM
COOLING WATER SYSTEM
FOR WASTE PROCESSING BUILDING
SH UNIT 1

DATE: 11-15-93
CPL-2165
S-1376

D-4A