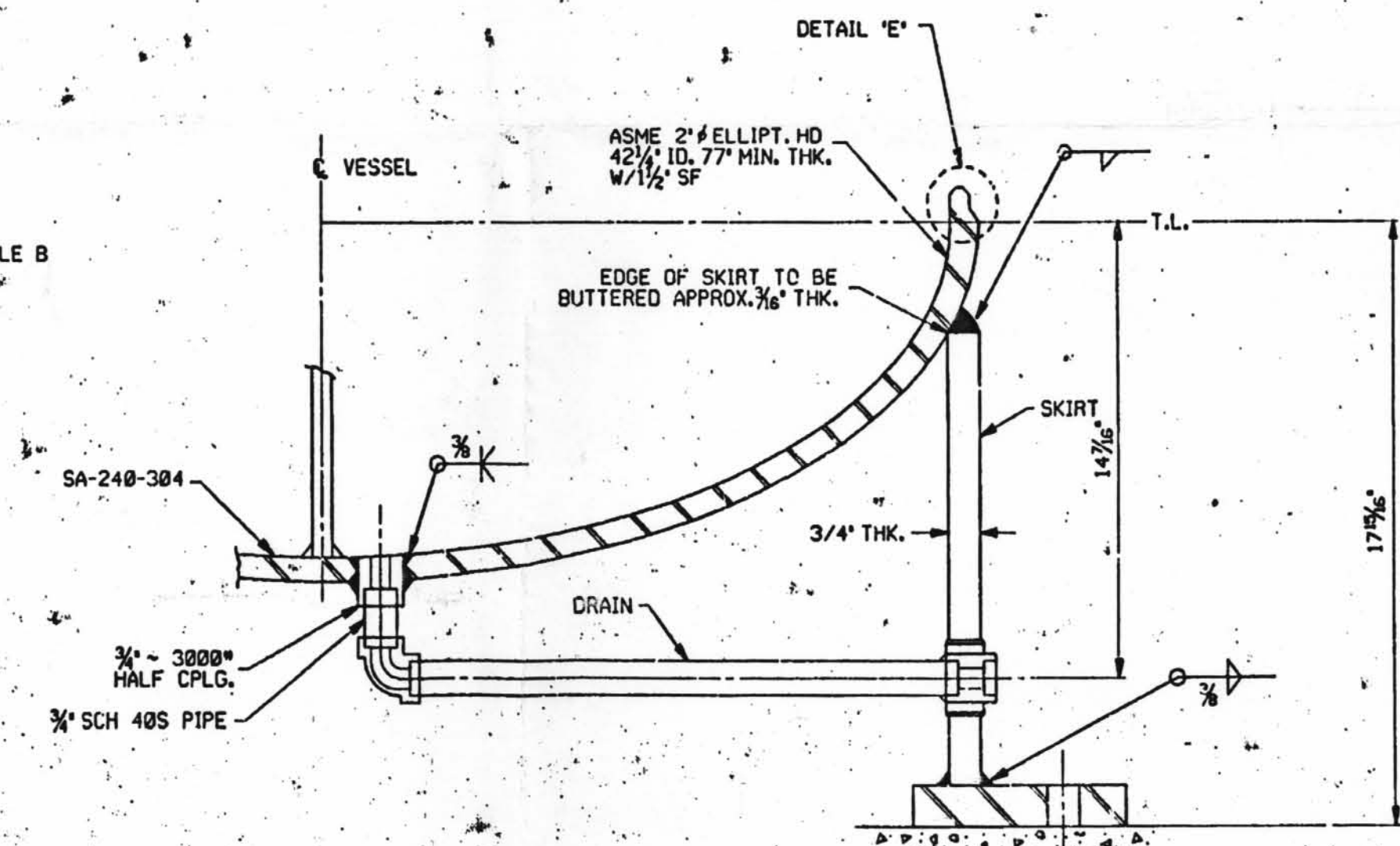
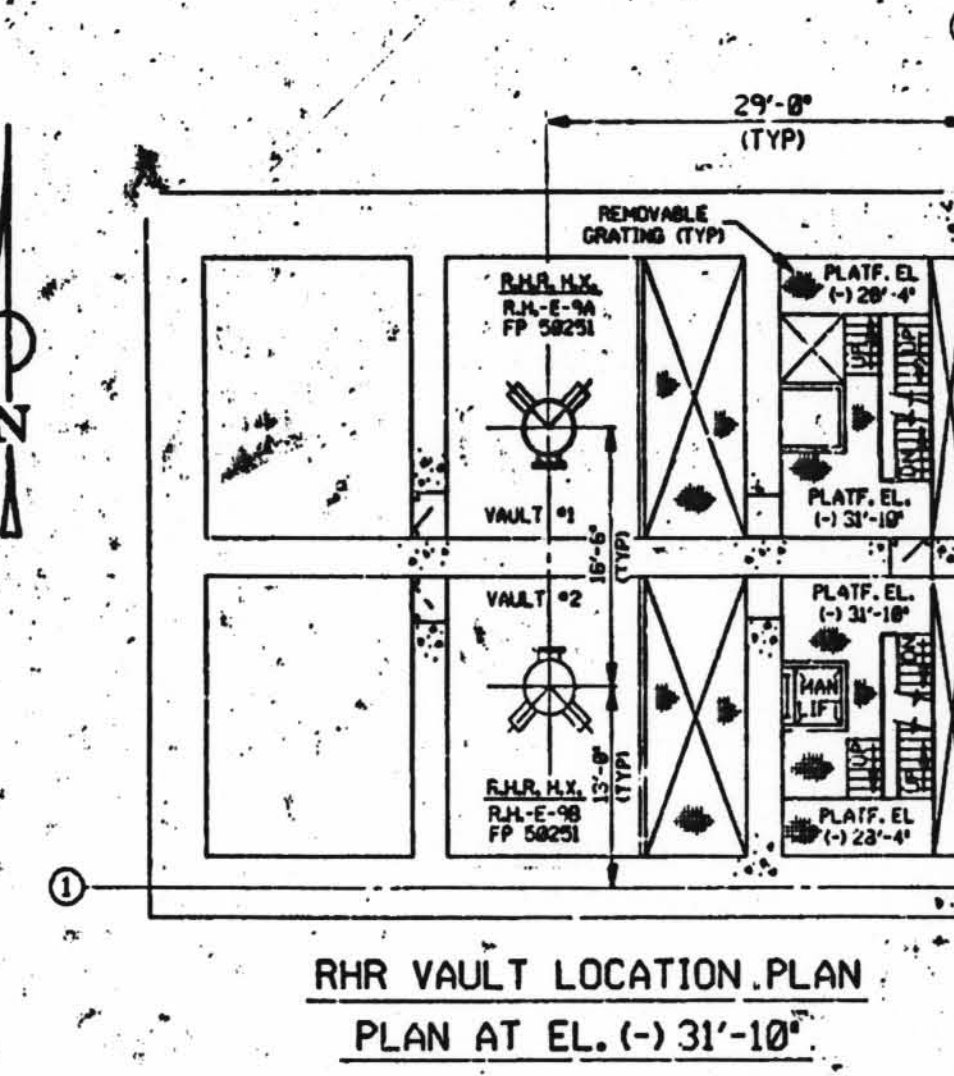
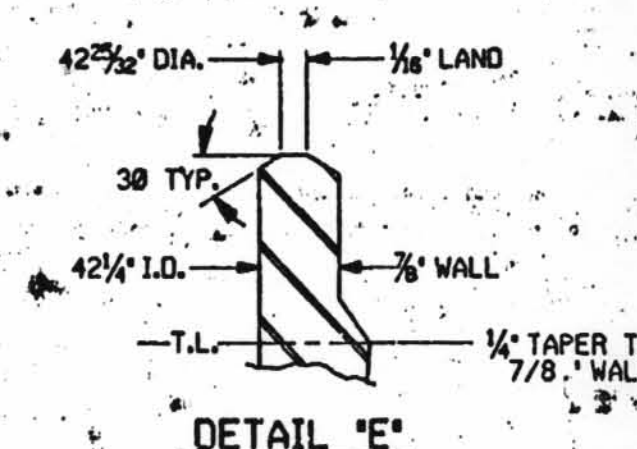
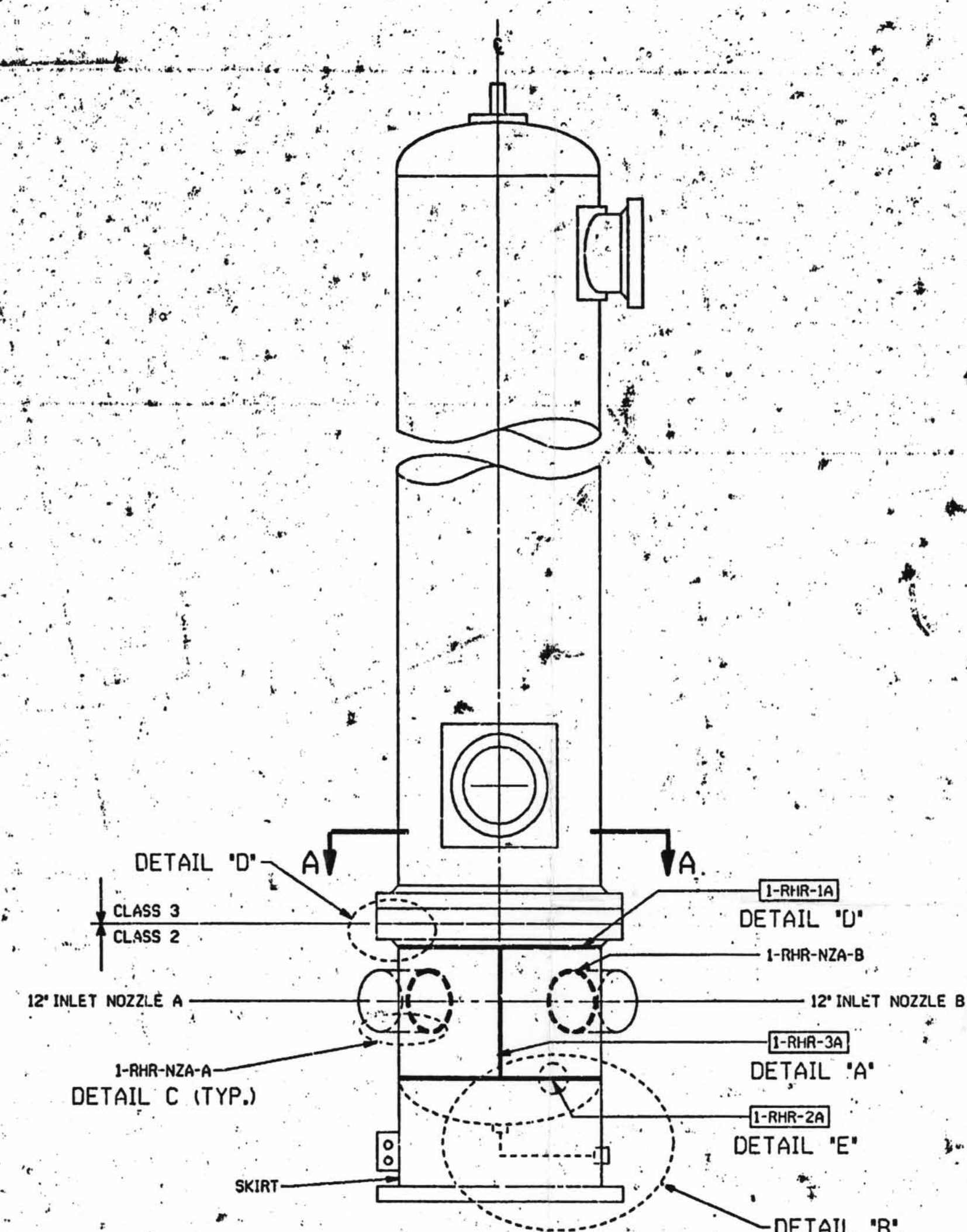
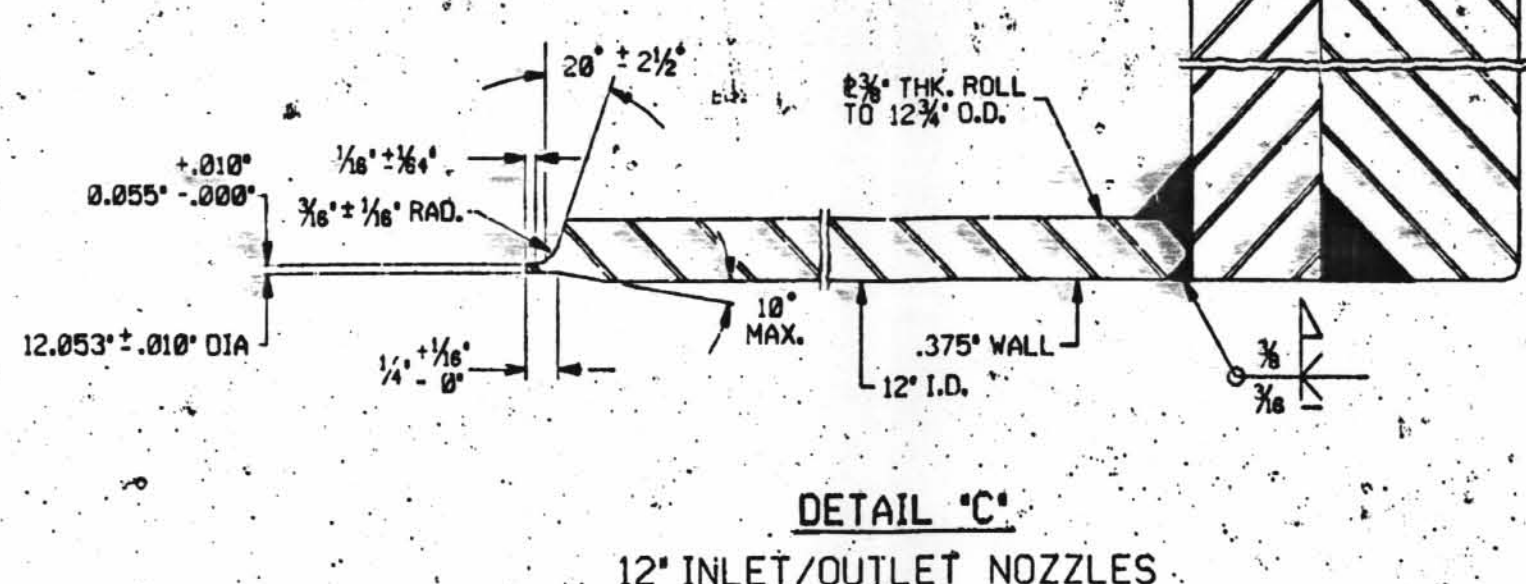
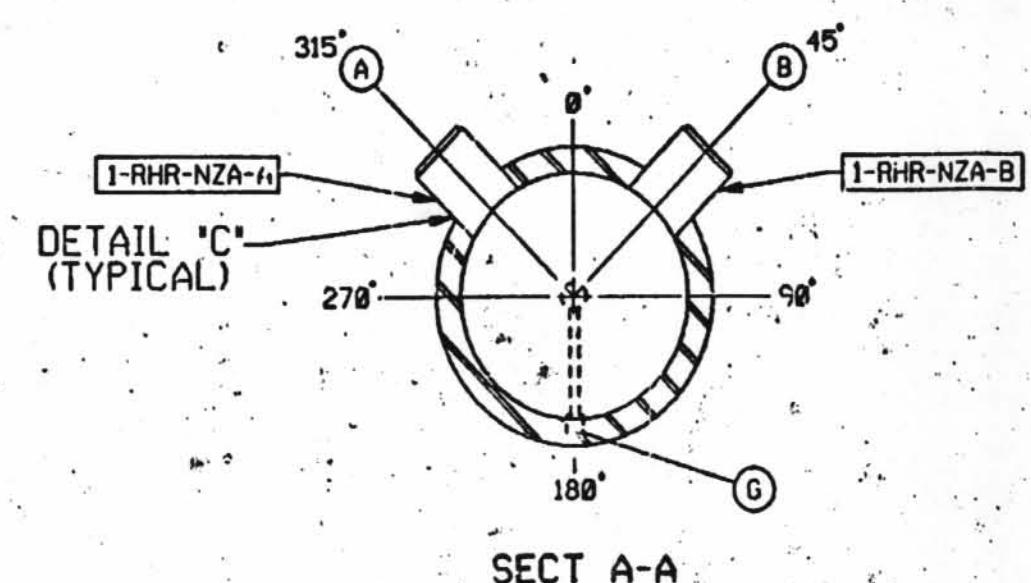
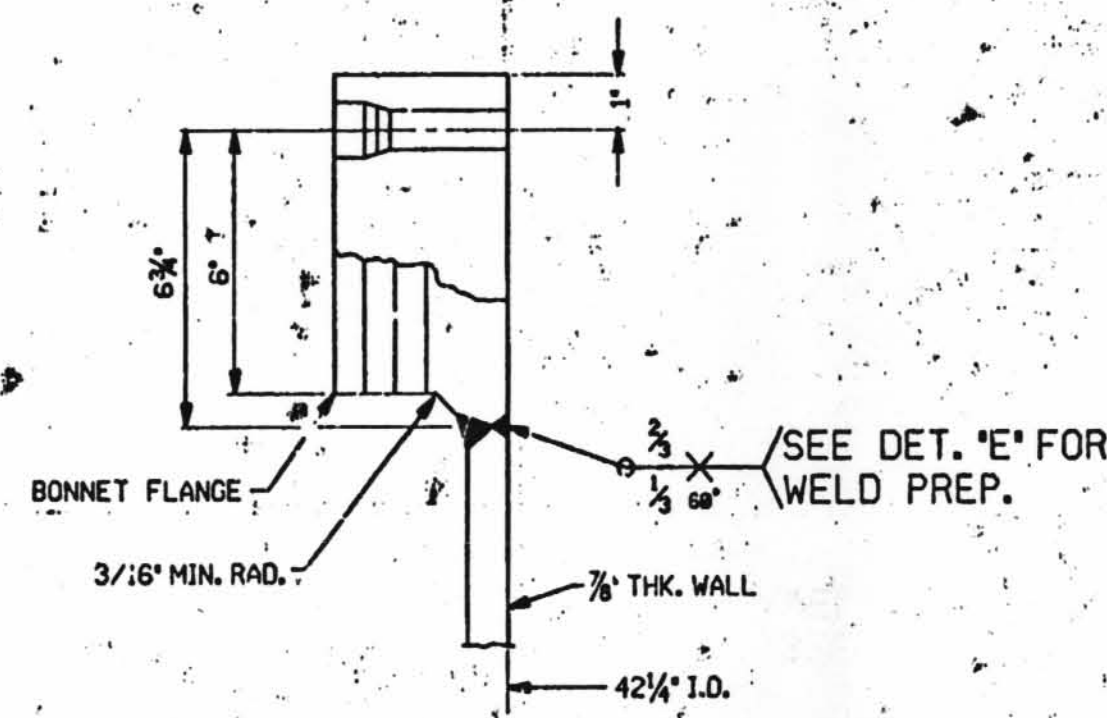
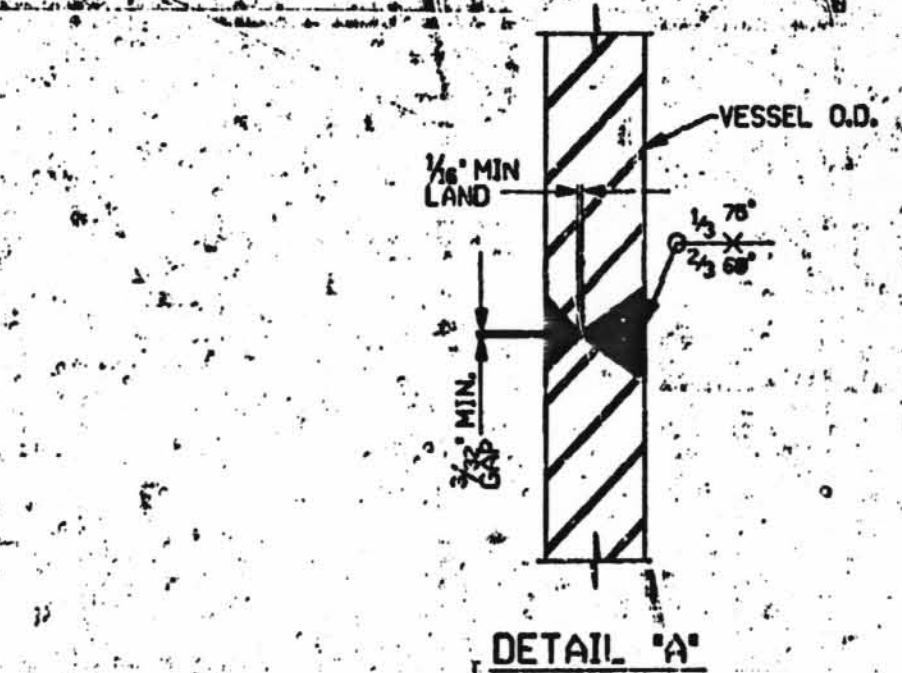


100059-AHN-1



- NOTES:
1. DRAWING NOT TO SCALE.
 2. MANUFACTURER: JOSEPH DAT JOB NO. J-2267-4
 3. MANUFACTURER DRAWINGS: 5618; 5620; 5622; 5627; 5628.
 4. WESTINGHOUSE P.O. NAH-546-CAZ 215357
 5. WESTINGHOUSE SHOP ORDER 210.
 6. 52 STUDS SA-193-B7 1 1/4\"/>
 - 7. NUTS SA-194 2H
 - 8. SHELL MATERIAL SA-240/t-304

FOR INFORMATION ONLY				FOR INFORMATION ONLY			
REV	DATE	DSGN	DRW	CHKD	LOC	DESCRIPTION	
1	12/28/88	MPW	JM			ORIGINAL ISSUE	
New Hampshire Yankee							
RESIDUAL HEAT EXCHANGER							
1-RH-E-9A							
ISI EQUIPMENT WELDS							
1-NHY-650001							
FF-56201	82	RESIDUAL HEAT EXCHANGER		SEABROOK STATION			
REF. DRAWING NO.	REV	TITLE					

FOR INFORMATION ONLY

D-2