

AUG 16 2000

DELIVERY ORDER

Delivery Order #: 104

Purchase Order No.: DR-97-0398

Contractor: Haworth Inc.

c/o - Price Modern of Washington (Mark Mahan)
9700G Martin Luther King Jr. Highway
Lanham, Maryland 20706

In accordance with Delivery Order No. DR-97-0398 dated 06/30/97, the contractor's proposal dated May 10, 2000, and the attached drawings and product list, the contractor shall provide design, product and installation to reconfigure the workstation at T-8E6 of the Two White Flint North building. Delivery shall take place on September 22, 2000. The total cost for this order is as follows:

Design	\$ 151.50
Product	\$2,424.73
Installation	\$ 270.00

Total	\$2,846.23
-------	------------

Please contact RoseMary Mann, Contract Specialist on (301) 415-6595 if there are any questions regarding this order.

Date: _____

Mary H. Mace, Contracting Officer
Contract Management Branch 1
Division of Contracts and Property
Management
Office of Administration

DOCUMENT NAME: \104

Acct R Mann L Fisher J Lilley CMB1 r/f

To receive a copy of this document, indicate in the box: "C" = Copy without enclosures "E" = Copy with enclosures

"N" = No copy

OFFICE	ADM/DCPM/CMB1	ADM/DCPM/CMB1					
NAME	RMann <i>RMann</i>	MMace <i>MMace</i>					
DATE	08/11/00	08/15/00					

OFFICIAL RECORD COPY

NRC510A.SIF
NRC, TWPN, T-8E6, SCIF

LIST\$ CUSTOMER% CUSTOMER\$

5-10-2000
14:18:52

#	Mfg	Qty	Part #	Description / Options	Unit	Extended
1	HGW	3	EFN-166-B	STRAIGHT FABRIC PANEL NO-POWER 12" X 66"	515.00 Customer 145.64	1545.00 %71.72000 436.92
			(B) .0F- 0JX .0F- 0JX .TR- 00E .TR- 00E	POWER BASE BASKETWEAVE GRADE B STERLING BASKETWEAVE GRADE B STERLING SURFACE 3 SMOKE SURFACE 4 SMOKE		
2	HGW	1	EON-266-B	OPEN FRAME PANEL NO-POWER 24" X 66"	474.00 Customer 134.05	474.00 %71.72000 134.05
			(B) .TR- 00E .TR- 00E	POWER BASE SURFACE 1 SMOKE SURFACE 2 SMOKE		
3	HGW	1	EFN-266-B	STRAIGHT FABRIC PANEL NO-POWER 24" X 66"	595.00 Customer 168.27	595.00 %71.72000 168.27
			(B) .0F- 0JX .0F- 0JX .TR- 00E .TR- 00E	POWER BASE BASKETWEAVE GRADE B STERLING BASKETWEAVE GRADE B STERLING SURFACE 3 SMOKE SURFACE 4 SMOKE		
4	HGW	3	EFN-266-B	STRAIGHT FABRIC PANEL POWER 24" X 66"	723.00 Customer 204.46	2169.00 %71.72000 813.38
			(B) .0F- 0JX .0F- 0JX .TR- 00E .TR- 00E	POWER BASE BASKETWEAVE GRADE B STERLING BASKETWEAVE GRADE B STERLING SURFACE 3 SMOKE SURFACE 4 SMOKE		

NRC510A.SIF
NRC, TWFN, T-8E6, SCIF

LIST\$ CUSTOMER% CUSTOMERS

5-10-2000
14:18:53

#	Mfg	Qty	Part #	Description / Options	Unit	Extended
5	HGW	1	EFP-566-B	STRAIGHT FABRIC PANEL POWER 60" X 66"	1092.00	1092.00
					Customer	%71.72000
					308.82	308.82
			(B) .0F- .0JX .0F- .0JX .TR- .00E .TR- .00E	POWER BASE BASKETWEAVE GRADE B STERLING BASKETWEAVE GRADE B STERLING SURFACE 3 SMOKE SURFACE 4 SMOKE		
6	HGW	4	FPFC-66-B	90 DEG. FABRIC FINISH POST 66"	74.00	296.00
					Customer	%71.72000
					20.93	83.72
			(B) .0F- .0JX .TR- .00E .TR- .00E	POWER BASE BASKETWEAVE GRADE B STERLING SURFACE 2 SMOKE SURFACE 3 SMOKE		
7	HGW	1	WS-424	REGULAR WORK SURFACE 48" X 24"	312.00	312.00
					Customer	%71.72000
					88.23	88.23
			() .0H- .03E .TR- .00E .TR- .00E	W/O GROMMET LAMINATE SMOKE SURFACE 2 SMOKE SURFACE 3 SMOKE		
8	HGW	1	WS-524	REGULAR WORK SURFACE 60" X 24"	357.00	357.00
					Customer	%71.72000
					100.96	100.96
			() .0H- .03E .TR- .00E .TR- .00E	W/O GROMMET LAMINATE SMOKE SURFACE 2 SMOKE SURFACE 3 SMOKE		

NRC810A.SIF
NRC, TWFN, T-8ES, SCIF

LIST\$ CUSTOMER% CUSTOMERS

5-10-2000
14:18:53

#	Mfg	Qty	Part #	Description / Options	Unit	Extended
9	HGW	1	WS-230	REGULAR WORK SURFACE 24" X 30"	283.00	263.00
					Customer	%71.72000
					74.38	74.38
			(.0H- 03E .TR- 00E .TR- 00E	W/O GROMMET LAMINATE SMOKE SURFACE 2 SMOKE SURFACE 3 SMOKE		
10	HGW	1	WS-224	REGULAR WORK SURFACE 24" X 24"	243.00	243.00
					Customer	%71.72000
					68.72	68.72
			(.0H- 03E .TR- 00E .TR- 00E	W/O GROMMET LAMINATE SMOKE SURFACE 2 SMOKE SURFACE 3 SMOKE		
11	HGW	1	WS-324	REGULAR WORK SURFACE 36" X 24"	275.00	275.00
					Customer	%71.72000
					77.77	77.77
			(.0H- 03E .TR- 00E .TR- 00E	W/O GROMMET LAMINATE SMOKE SURFACE 2 SMOKE SURFACE 3 SMOKE		
12	HGW	1	SL-3	LOW SHELF 36"	146.00	146.00
					Customer	%71.72000
					41.29	41.29
			.0V- 03E .TR- 00E .TR- 00E	VIDENE SMOKE SURFACE 2 SMOKE SURFACE 3 SMOKE		

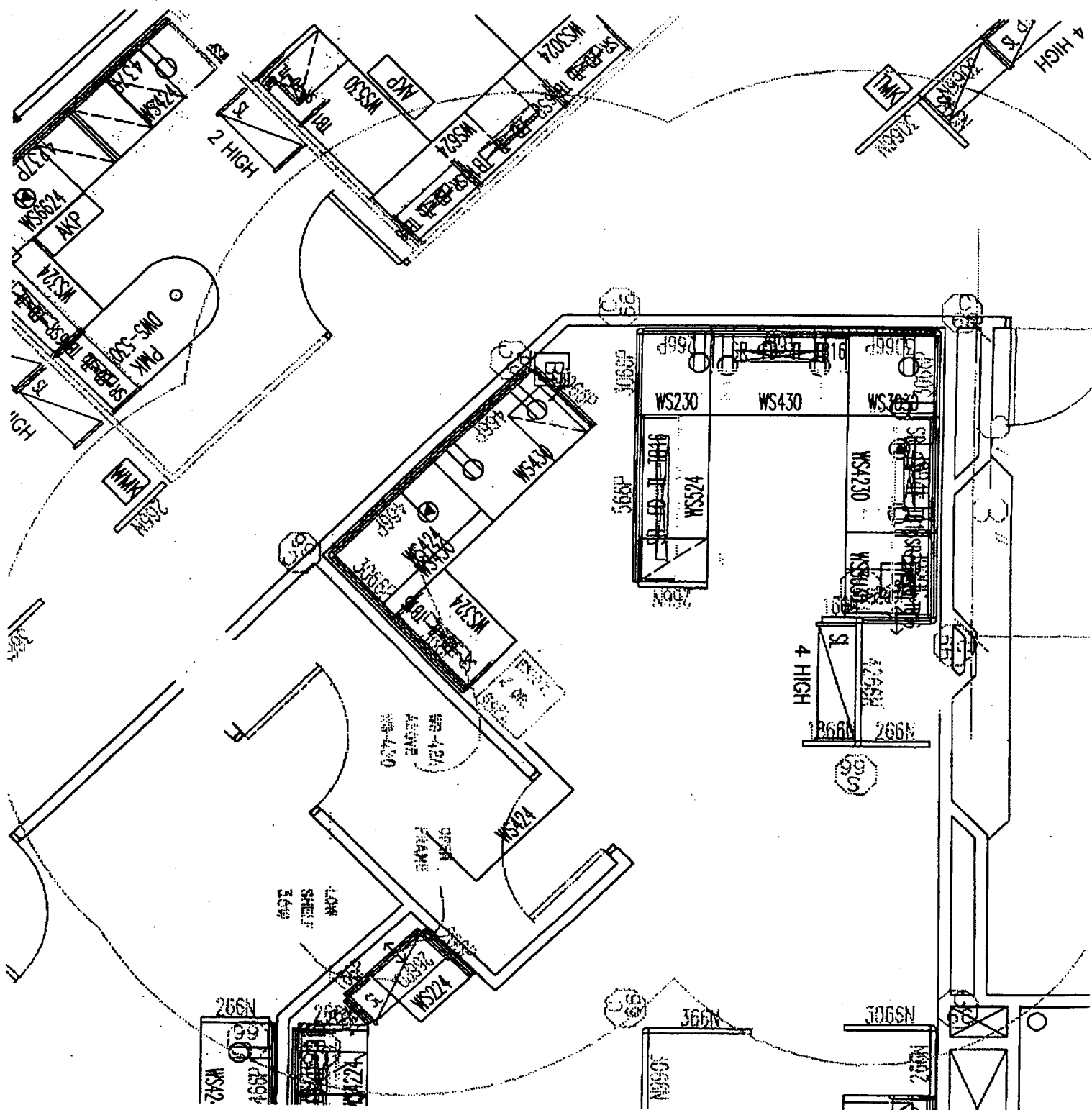
NRC810A.SIF
NRC, TWFN, T-8E8, SCIF

LIST\$ CUSTOMER% CUSTOMER\$

6-10-2000
14:18:53

#	Mfg	Qty	Part #	Description / Options	Unit	Extended
13	HGW	1	SR-4	REGULAR SHELF 48"	151.00	151.00
					Customer	%71.72000
					42.70	42.70
			.0V- 03E .TR- 00E .TR- 00E	VIDENE SMOKE SURFACE 2 SMOKE SURFACE 3 SMOKE		
14	HGW	1	FDRV-4	REG. FLIPPER DOOR - VIDENE 48"	301.00	301.00
					Customer	%71.72000
					85.12	85.12
			() .HC- 03E .TR- 00E .TR- 00E	WITH LOCK HIGH PRESSURE LAMINATE SMOKE SURFACE 2 SMOKE SURFACE 3 SMOKE		
15	HGW	1	HTL-0048-T	TASK LIGHT 48"	195.00	195.00
					Customer	%71.72000
					55.15	55.15
			(T) .TR- 00E	T-8 OPTIC SURFACE 1 SMOKE		
16	HGW	1	HTB-4816	TACKBOARD 48" X 16"	160.00	160.00
					Customer	%71.72000
					45.25	45.25
			.FE- 0CW	ESSENTIEL AQUA	GRADE A	

Totals
List 8574.00
Customer 2424.73
Customer% 71.71997

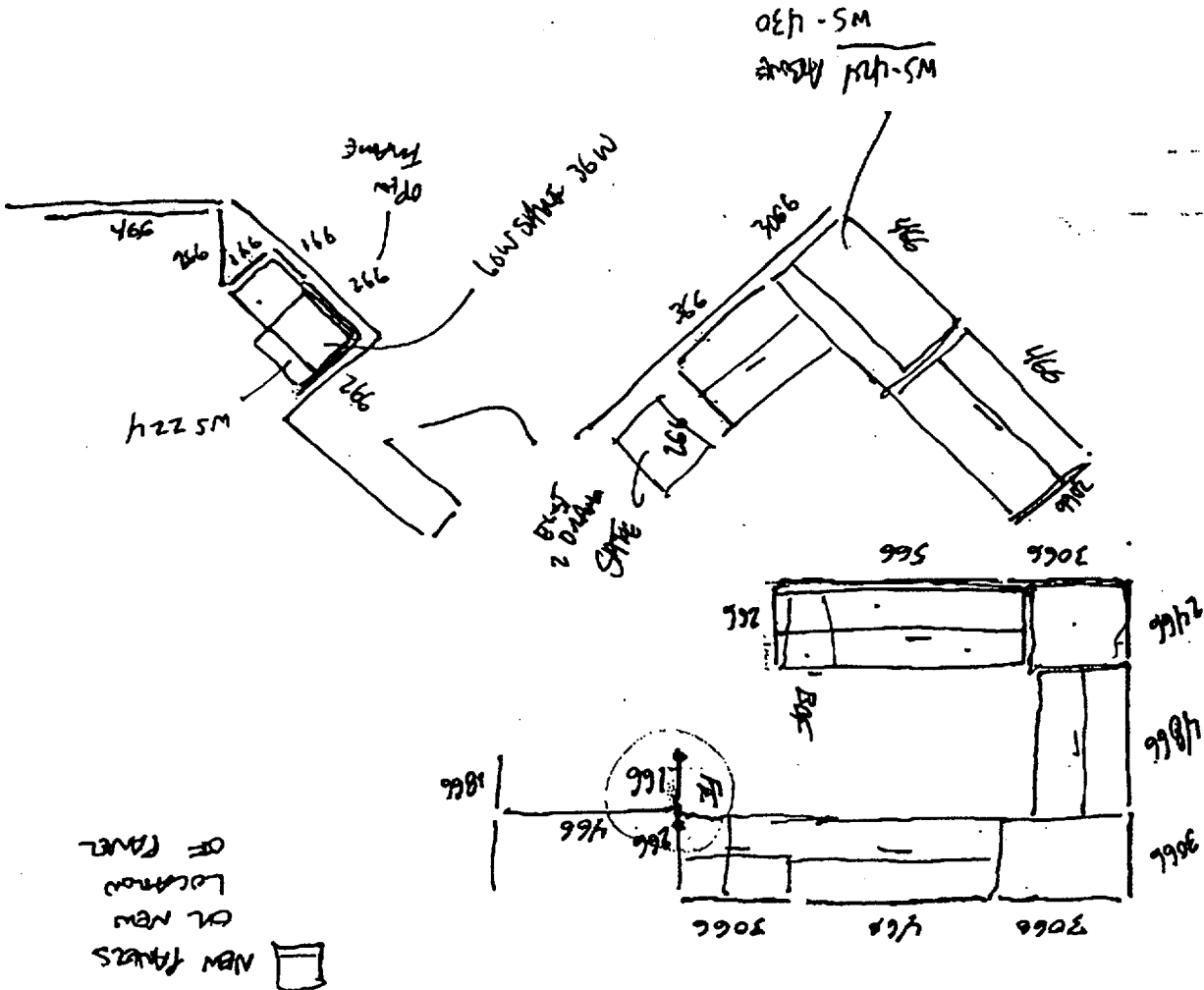


Approved by: *[Signature]*
 Robert A. Warren

NO. 1

Code	Count
MS-324	1
MS-224	1
MS-230	1
MS-324	1
MS-424	1
TPC-66-B	4
ETP-54-B	1
ETP-26-B	3
ETN-26-B	1
ETN-26-B	1
ETN-16-B	3

~~24-11-1944~~ +
~~24-11-1944~~ +
~~24-11-1944~~ +
~~24-11-1944~~ +
 24-11-1944 1
 24-11-1944 1
 24-11-1944 1
 24-11-1944 1
 24-11-1944 1



NAL TWEN T-8E6 SCIF