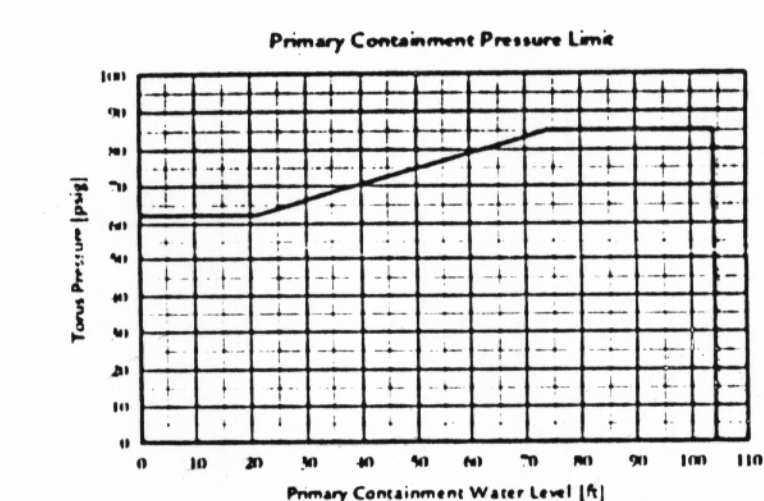
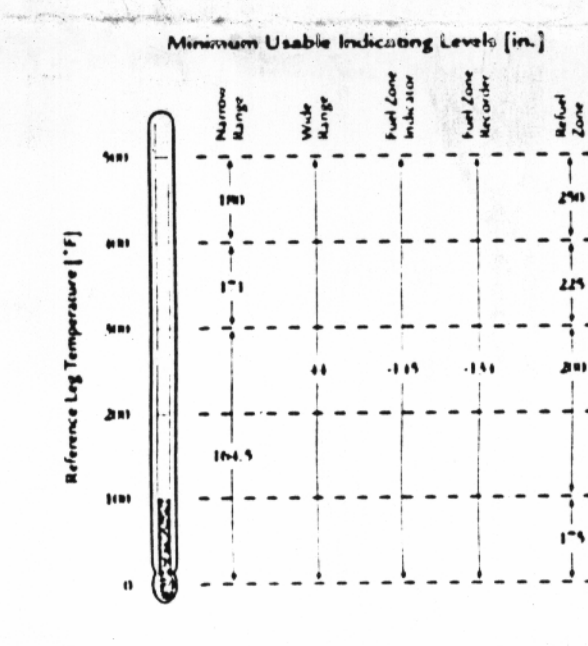
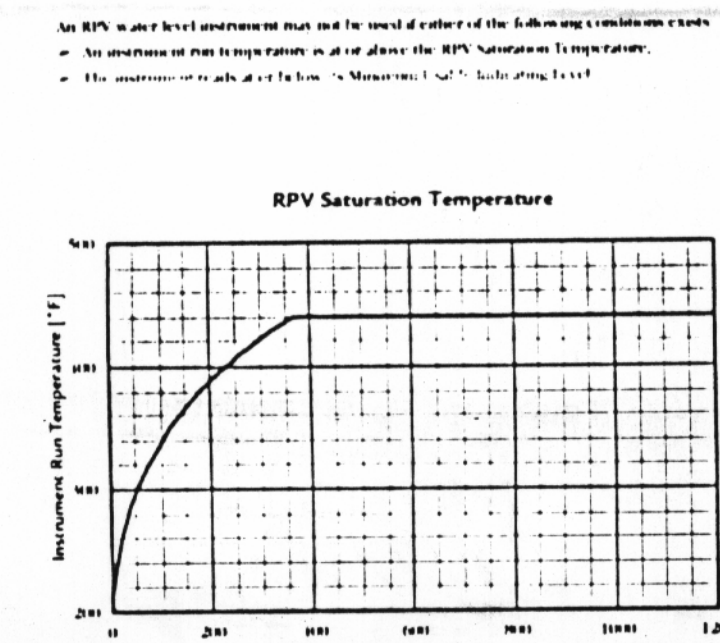
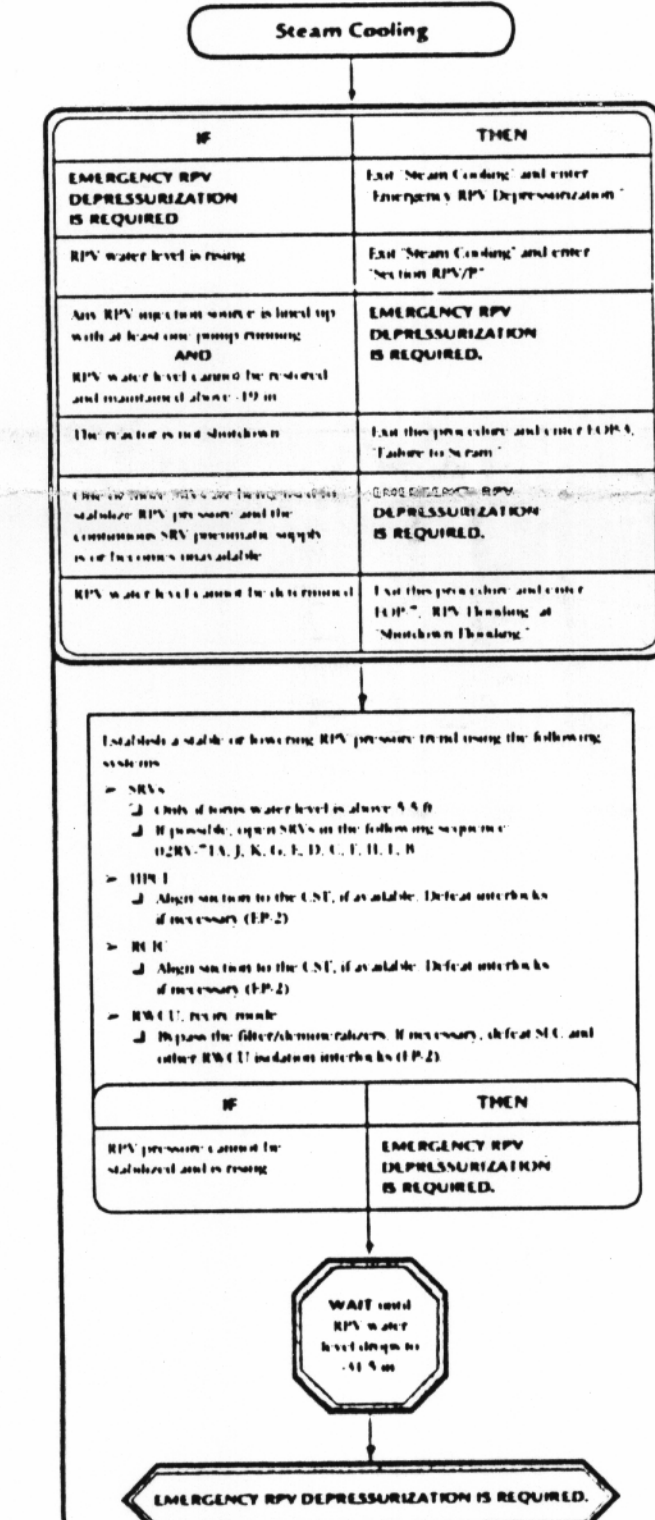
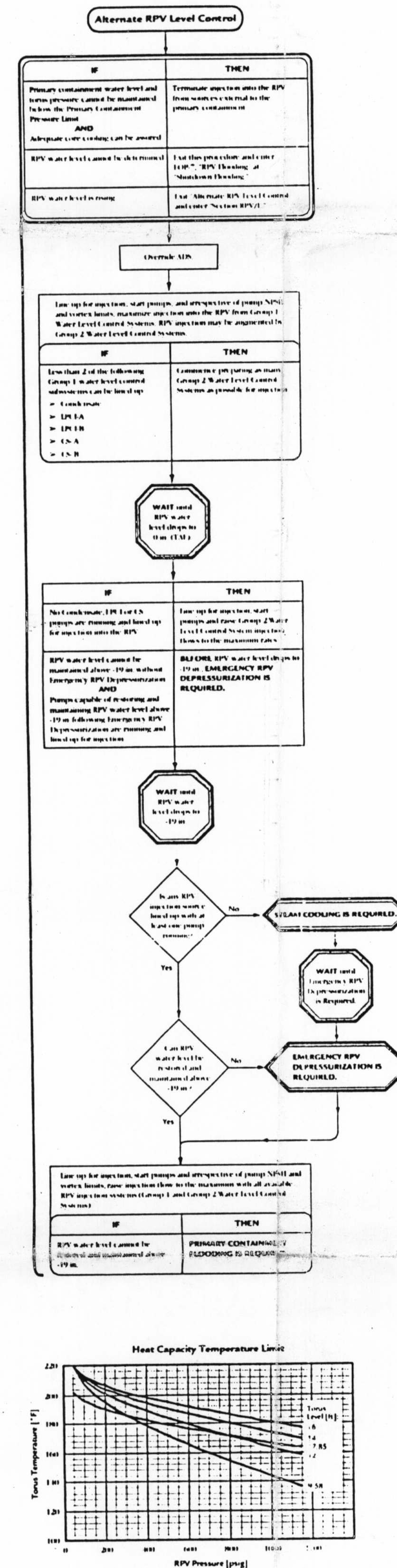
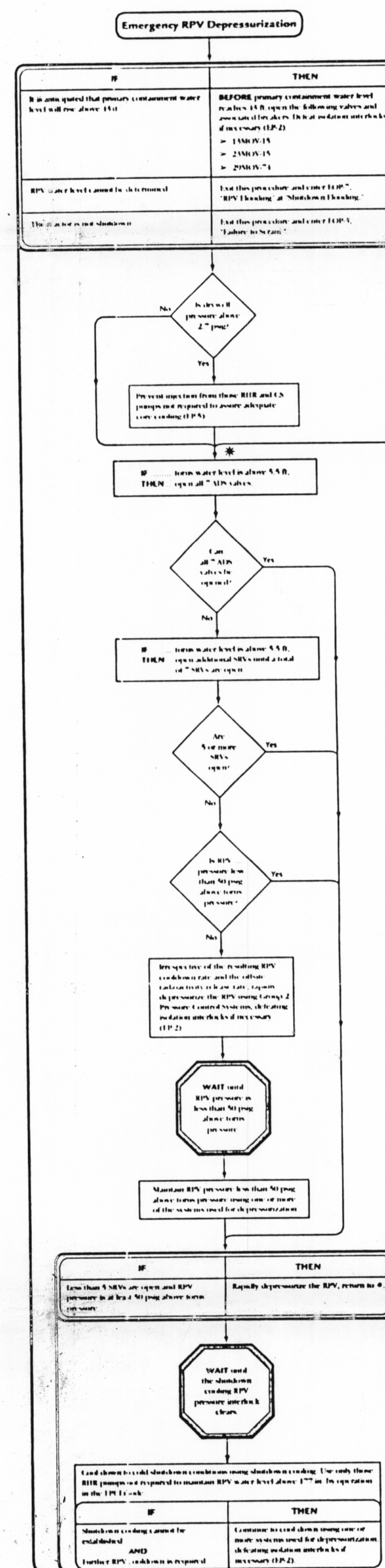
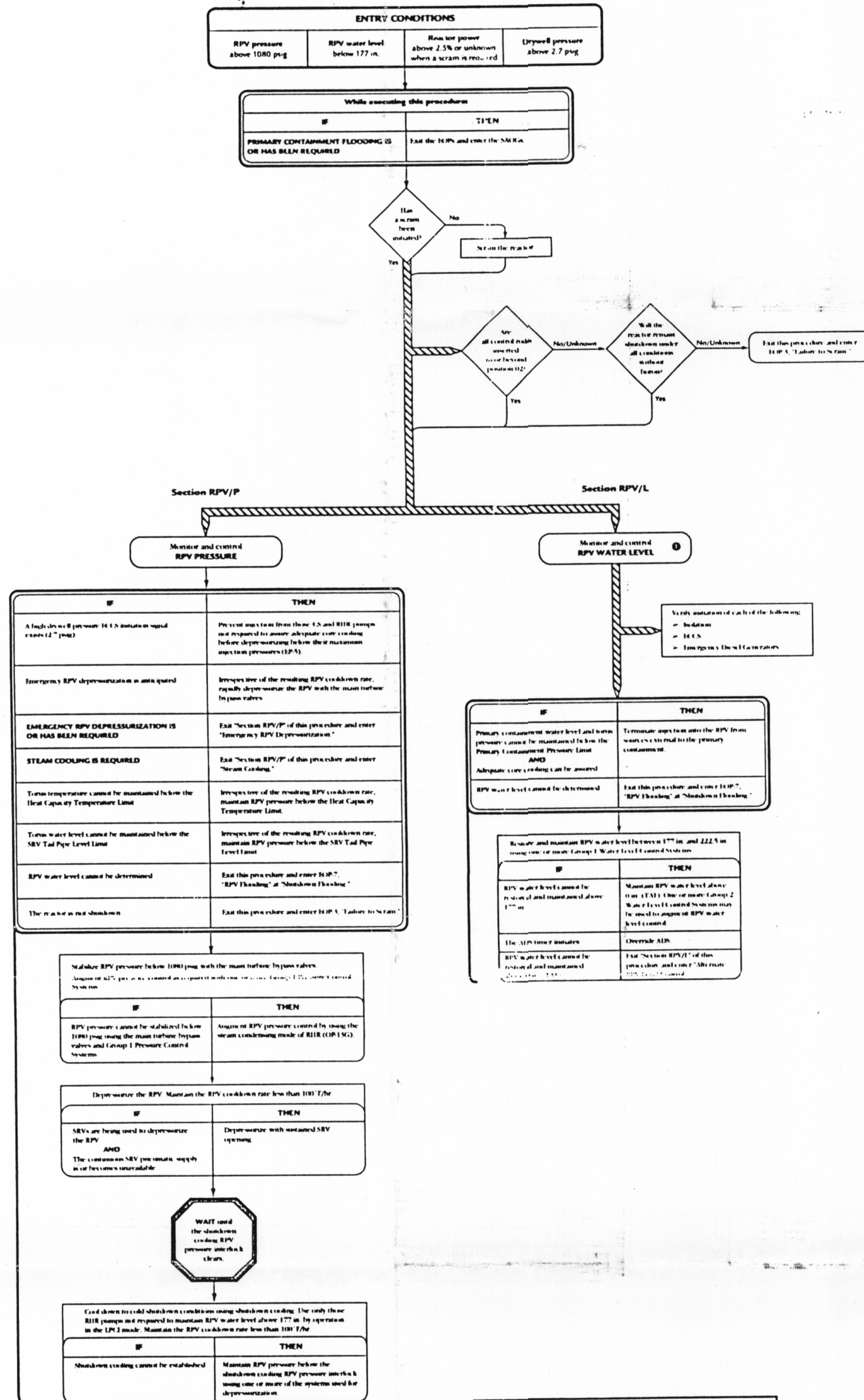


EQP-2 RPV CONTROL



- Group 1 Pressure Control Systems
- Assigned Pressure (Control Panel):
 - 18V
 - 1. Check if static water level is above 5.00
 - 2. If possible, use 18V in the following sequence:
 - 18V1, 18V2, 18V3, 18V4, 18V5, 18V6, 18V7, 18V8
 - 3. If the common use 18V pumps, sequence is no becomes unfeasible, plus the control circuit for each 18V in C130 / A1701
 - 18V1
 - 1. Align on time to the CST, if available
 - 18V2
 - 1. Align on time to the CST, if available
 - 18V11, 18V12
 - 1. Reuse the filter/drain rollers.
 - 2. Perform M1, and other FSW1 induction intervals for recovery (P.P.)
 - 18V13, 18V14, 18V15
 - 1. Must use one line absorber
 - 2. Re-use one level of pump
 - M40
 - 1. Screen Breaker

Group 1 Water Level Control Systems

Assumed Water Level Hand

- in **Controlrange / Freerange**
 - = 1. R11
 - = 1. R12
 - = 1. R13
 - if u has to be the T.N. if it is 0, then
 - if u is at the high range temperature indication and
 - high range water level has been transfer of emergency (F.P.2)
 - = R1.4
 - if u has to be the T.N. if it is 0, then
 - if u is at the low range pressure and high range temperature indication and emergency (F.P.2)
 - = 1. R1.5
 - if u is through this, he is at the high range as we are providing
 - = 1.2

Group 2 Water Level Control Systems	
Assessing Water Level Band:	
<ul style="list-style-type: none"> • RIR Service Water monitor • Low Water monitor • RIR Keep-Off • CS Keep-Off • Emergency Transfer • SL (Start of Bottom Tank) 	(1PM)

[illegible]

NEW POWER PAVEMENT AUTHORITY JAMES A. HILL/PAVEMENT POLYMER LEAK DETECTION PLANT BAYVIEW AND V. COOPERATING POWER PLANT		
RPV CONTROL		
EOP-2	Rev. 5	13 Dec 98