

31-302

Document Transmittal #: 137736

Date: 07/19/2000

Page 1

To: DC DESK

MAC: N/A

Holder #: 1242

Destination:

Description: NRC

Document:	Revision:	II	IC#	Comment:	Copy Totals		
					INF	CTL	MST
REP02	71				0	2	0
REPINDEX	112				0	2	0

Instructions to the Addressee: Please verify the document(s) received agrees with the above information. Notify Document Control if changes are required to addressee information, or mark the transmittal and return as indicated below.

Engineering managers are required by NEP-121 to determine if new, revised, or temporary changes to procedures affect job functions of their personnel. Managers will communicate change information appropriately and provide documentation of any training conducted to the Engineering Training Coordinator.

Operations department must attach old document(s) or portions of document(s) superseded by the above to this transmittal.

The signature indicates acknowledgment of receipt of the above document(s) and that documents have been updated. Return signed and dated transmittal to Document Control within 15 working days of transmittal date to mail code:

____ SA2A
____ Florida Power Corporation
Document Control, SA2A
Crystal River Energy Complex
15760 W. Power Line St.
Crystal River, FL 34428-6708

Signature of Addressee: _____ Date: _____

AD45



RADIOLOGICAL EMERGENCY PLANNING DEPARTMENT PROCEDURE

REP Rev. 112
DATE 07/18/00
PAGE 1 of 1

TITLE: REP INDEX

<u>PROCEDURE NO.</u>	<u>TITLE</u>	<u>REVISION</u>	<u>DATE</u>
REP-01	Cancelled (Refer to REP-03.)	<div>CONTROLLED COPY NUCLEAR OPERATIONS Folder # 1-5-28 1242 APR 2000</div>	
REP-02	Activation and Notification of the Emergency Operations Facility Organization		
REP-03	Operation of the Emergency Operations Facility	71	07/18/00
REP-03A	Setup of the Emergency Operations Facility	28	05/30/00
REP-04	Off-Site Radiological Dose Assessment Methods for the Emergency Operations Facility	1	02/22/00
REP-05	Cancelled (Refer to REP-03.)	9	02/16/96
REP-06	Schedule for Radiological Emergency Response Plan Maintenance (limited distribution)	20	03/10/99
REP-07	Cancelled		
REP-08	Dissemination of Information Following an Emergency at Crystal River Unit 3	6	02/16/96
REP-09	Dose Assessment Software Control Program (issued only to REP Dept. personnel)	1	02/16/96
REP-10	Radiological Emergency Planning Administrative Instructions (issued only to REP Dept. personnel)	8	01/17/00
REP-11	Conduct of Drills and Exercises Supporting the Radiological Emergency Response Plan (issued only to REP Dept. personnel)	2	01/26/99
REP-12	Emergency Operations Facility Accident Assessment Procedure (limited distribution)	0	01/26/99



RADIOLOGICAL EMERGENCY PLANNING DEPARTMENT PROCEDURE

REP Rev. 112
DATE 07/18/00
PAGE 1 of 1

TITLE: REP INDEX

PROCEDURE NO.	TITLE	REVISION	DATE
REP-01	Cancelled (Refer to REP-03.)	CONTROLLED COPY NUCLEAR OPERATIONS Holder # <u>1242</u>	
REP-02	Activation and Notification of the Emergency Operations Facility Organization	71	07/18/00
REP-03	Operation of the Emergency Operations Facility	28	05/30/00
REP-03A	Setup of the Emergency Operations Facility	1	02/22/00
REP-04	Off-Site Radiological Dose Assessment Methods for the Emergency Operations Facility	9	02/16/96
REP-05	Cancelled (Refer to REP-03.)		
REP-06	Schedule for Radiological Emergency Response Plan Maintenance (limited distribution)	20	03/10/99
REP-07	Cancelled		
REP-08	Dissemination of Information Following an Emergency at Crystal River Unit 3	6	02/16/96
REP-09	Dose Assessment Software Control Program (issued only to REP Dept. personnel)	1	02/16/96
REP-10	Radiological Emergency Planning Administrative Instructions (issued only to REP Dept. personnel)	8	01/17/00
REP-11	Conduct of Drills and Exercises Supporting the Radiological Emergency Response Plan (issued only to REP Dept. personnel)	2	01/26/99
REP-12	Emergency Operations Facility Accident Assessment Procedure (limited distribution)	0	01/26/99



RADIOLOGICAL EMERGENCY PLANNING DEPARTMENT PROCEDURE

REP-02 Rev. 71

Date 07/18/00

Page 1 of 34

ACTIVATION AND NOTIFICATION OF THE EMERGENCY OPERATIONS FACILITY ORGANIZATION

REQUIRED APPROVALS

A handwritten signature in black ink, appearing to read "John D. Stephens".

Manager, Radiological Emergency Planning

7/13/00
Date

A handwritten signature in black ink, appearing to read "John R. ...".

Vice President, Nuclear Operations

7/17/2000
Date



RADIOLOGICAL EMERGENCY PLANNING DEPARTMENT PROCEDURE

REP-02 Rev. 71

Date 07/18/00

Page 2 of 34

**TITLE: ACTIVATION AND NOTIFICATION OF THE
EMERGENCY OPERATIONS FACILITY ORGANIZATION**

1.0 PURPOSE

This procedure provides instructions for the activation of the EOF Organization in response to an emergency at CR-3.

2.0 SCOPE

- 2.1 This procedure describes the activation of the EOF Organization and provides initial directions for assembly of emergency response personnel. It contains telephone directories for the emergency response personnel and facilities necessary for effective implementation of the RERP, and provides instructions for notifying response personnel of changes in emergency classification or of the need for a shift change.
- 2.2 A Safety Assessment was performed for this procedure. A determination was made that this procedure is outside the scope of 10 CFR 50.59.

3.0 APPLICABLE REFERENCE DOCUMENTS

FPC CR-3 "Radiological Emergency Response Plan"

4.0 DEFINITIONS AND ABBREVIATIONS

Terms used in this procedure are consistent with the definitions and abbreviations provided in the RERP.

4.1 DEFINITIONS

4.1.1 Activation:

To provide notification to emergency response personnel of the need to respond to the EOF for staffing and operation.

4.1.2 Operational:

The minimum functions and communication links are established and required equipment is in proper working order per the EOF checklist in REP-03.



RADIOLOGICAL EMERGENCY PLANNING DEPARTMENT PROCEDURE

REP-02 Rev. 71

Date 07/18/00

Page 3 of 34

TITLE: ACTIVATION AND NOTIFICATION OF THE
EMERGENCY OPERATIONS FACILITY ORGANIZATION

4.2 ABBREVIATIONS

CR-3 - Crystal River Unit 3
ENC - Emergency News Center
EOF - Emergency Operations Facility
EPC - Emergency Planning Coordinator
FPC - Florida Power Corporation
OSC - Operational Support Center
RERP - Radiological Emergency Response Plan
TSC - Technical Support Center

5.0 RESPONSIBILITIES AND ACTIONS

5.1 INITIAL ACTIVATION

The EOF Director is notified of any emergency that results in implementation of the RERP. In the event that the emergency is classified as a SITE AREA EMERGENCY or GENERAL EMERGENCY, the EOF Director will activate the EOF Organization. Based on assessments between the EOF Director and the Emergency Coordinator, the initial level of support required will be determined. The EOF Director will then notify those EOF members necessary for further assessment and response.

5.2 LEVEL OF ACTIVATION

The level of involvement of the various members of the EOF Organization will depend strongly on the nature of the emergency and the actions required to respond and recover. Assessment by the EOF Director, therefore, is appropriate before notifying and assembling the complete EOF Organization. The following describes the levels of involvement associated with each of the emergency classes:

a. Unusual Event

The EOF Director is notified and will notify EOF Staff as the event warrants.

b. Alert

The Emergency Coordinator will notify the EOF Director, who will notify the EOF Facility Manager; the Assistant EOF Director; the EOF Technical Support Director; the Communications Director; and

[illegible]

the Vice President, Nuclear Operations. This notification will alert these individuals to stand by for further information, or may include a request for specific support.

The EOF Technical Support Director will notify the Corporate Health Physicist. The Corporate Health Physicist will call the EOF Dose Assessment Team members and activate at an ALERT.

The Vice President, Nuclear Operations will notify the President and Chief Executive Officer.

The EOF Director may also activate, at his discretion, other portions of the EOF Organization deemed necessary. Nuclear Security should be called to activate the EOF group pagers.

C. Site Area Emergency

EOF members will be notified by telephone and/or pager of the emergency, and are required to report to their functional locations as specified in this procedure.

d. General Emergency

EOF members will be notified by telephone and/or pager of the emergency, and are required to report to their functional locations as specified in this procedure.

5.3 EOF NOTIFICATIONS

5.3.1 Notification Network

In order to expedite notifications, the EOF Organization functions as a notification network. The notification network is designed to provide notification of RERP activation, instructions for staffing the emergency facilities, notification of changes in emergency classification, and relay of shift change instructions. Figure 1 illustrates this network. Attachment 1 provides a directory of emergency response personnel, including the emergency positions, primary and alternate designees, and their respective telephone numbers with information arranged for use as the notification network. Each emergency position/individual responsible for implementing the network is listed at the top of a page, followed by the emergency positions/individuals he/she is responsible for contacting. If neither the primary nor the alternate(s) can be reached, the EOF Director is to be notified to designate an individual to fill the position until the primary or alternate can be located.



RADIOLOGICAL EMERGENCY PLANNING DEPARTMENT PROCEDURE

REP-02 Rev. 71

Date 07/18/00

Page 5 of 34

TITLE:

ACTIVATION AND NOTIFICATION OF THE EMERGENCY OPERATIONS FACILITY ORGANIZATION

During normal working hours, notification of EOF members located at CR-3 may be via pagers and/or the plant public address system. If a SITE AREA EMERGENCY is declared, EOF members should report to the EOF immediately, regardless of whether he/she is the primary or alternate for that position. Before departing for the EOF, an individual in the EOF member's department should be notified in the event he/she is called while enroute. The EOF Director will determine final staffing as needed.

5.3.2 Special Considerations

The Corporate Security Specialist is not required to report directly to the EOF since he/she must maintain the mobility necessary for fulfillment of responsibilities. However, the Corporate Security Specialist must notify the EOF Director upon assuming his/her emergency role.

5.4 NOTIFICATION OF CHANGE IN EMERGENCY CLASSIFICATION

After initially notifying EOF members that an emergency situation exists at CR-3, subsequent events may result in a reclassification of the emergency. Depending on the initial classification of the emergency and whether the change indicates a more or less serious emergency situation, varying changes in support may be appropriate. To assure EOF members are informed of changes in emergency classification in an expeditious manner, the network utilized for notification described above shall also provide the basis for notification of changes in emergency class.

Upon notification by the Emergency Coordinator that a change in emergency classification has occurred, the EOF Director shall initiate notification of the EOF Organization. This may be accomplished by announcement at the EOF, supplemented by telephone contacts; however, each individual position responsible for initial notifications per the network described in Section 5.3 above shall assure that each designated contact of the network is informed of the classification change. Each EOF member shall then respond as appropriate to the new classification or per directions provided through the EOF Director.

5.5 SHIFT CHANGE

Should the emergency situation appear to require long-term response and support, the EOF Director shall assess the need for providing personnel assignments for continuing support. If a shift change is required, they shall identify the emergency response positions necessary to maintain adequate response. Each individual filling those positions shall then contact their alternate to report to the emergency response facility. In the event a suitable alternate cannot be located in a timely manner, then that member shall immediately inform his respective director to locate or identify a suitable replacement.



RADIOLOGICAL EMERGENCY PLANNING DEPARTMENT PROCEDURE

REP-02 Rev. 71

Date 07/18/00

Page 6 of 34

TITLE:

ACTIVATION AND NOTIFICATION OF THE EMERGENCY OPERATIONS FACILITY ORGANIZATION

Once the relief alternate arrives at the designated location, there shall be a briefing by the individual that has filled the position prior to the transferring of responsibilities. The briefing is to be as complete as possible and should entail, as a minimum, the scenario of the emergency, the impact on the emergency position, the contacts made, the response anticipated from inquiries made, the actions exercised, the justification for these actions, and conveyance of all forms and logs generated.

5.6 NOTIFICATION DIRECTORIES

5.6.1 As an integral part of this procedure, directories are provided for EOF personnel, support facilities, support organizations, and off-site organizations:

- a. Attachment 1 provides a directory of EOF personnel and office and home telephone numbers for notification purposes.
- b. Attachment 2 provides a directory of emergency response facilities and telephone numbers.
- c. Attachment 3 provides a directory of off-site technical organizations. The designated FPC contact is also provided.

5.6.2 Each EOF member should inform the EPC within one week of known changes in personnel when such changes affect the EOF personnel and/or telephone numbers.

5.6.3 The EPC shall be informed of changes to the listings for off-site organizations or miscellaneous support contacts.

5.6.4 These changes will be made and distributed by the EPC to holders of this procedure.

5.6.5 There shall be a quarterly review and update of the telephone numbers listed in the attachments of this procedure.

6.0 INTERPRETATION CONTACT

The responsibility for the development and maintenance of this procedure rests with the EPC. The EPC shall be contacted regarding any clarification or interpretation of requirements of this procedure.



RADIOLOGICAL EMERGENCY PLANNING DEPARTMENT PROCEDURE

REP-02 Rev. 71

Date 07/18/00

Page 7 of 34

TITLE:

ACTIVATION AND NOTIFICATION OF THE
EMERGENCY OPERATIONS FACILITY ORGANIZATION

7.0 REVISION HISTORY

Rev. 0	Date: <u>07/31/81</u>	Original Release (NSSD-24)
Rev. 0	Date: <u>10/30/81</u>	General revisions and change of designation to NL-18.
Rev. 1	Date: <u>02/10/82</u>	General Revisions
Rev. 0	Date: <u>08/30/82</u>	General revisions and change of designation to REP-02.
Rev. 1	Date: <u>12/31/82</u>	General Revisions
Rev. 2	Date: <u>05/11/83</u>	General Revisions
Rev. 3	Date: <u>09/30/83</u>	General Revisions
Rev. 4	Date: <u>02/29/84</u>	Completeness
Rev. 5	Date: <u>06/04/84</u>	Attachment 1 formatted for clarity and to reflect changes to CES0.
Rev. 6	Date: <u>08/06/84</u>	General Revisions
Rev. 7	Date: <u>10/22/84</u>	General Revisions
Rev. 8	Date: <u>01/18/85</u>	General Revisions
Rev. 9	Date: <u>04/15/85</u>	General revisions and change to notification network.
Rev. 10	Date: <u>07/15/85</u>	General Revisions
Rev. 11	Date: <u>10/15/85</u>	General Revisions
Rev. 12	Date: <u>01/31/86</u>	General Revisions
Rev. 13	Date: <u>05/16/86</u>	General Revisions
Rev. 14	Date: <u>08/11/86</u>	General Revisions
Rev. 15	Date: <u>10/15/86</u>	General Revisions
Rev. 16	Date: <u>01/16/87</u>	General Revisions
Rev. 17	Date: <u>04/16/87</u>	General Revisions
Rev. 18	Date: <u>07/20/87</u>	General Revisions
Rev. 19	Date: <u>10/23/87</u>	General Revisions
Rev. 20	Date: <u>11/30/87</u>	Corporate Command Center (CCC) Reorganization
Rev. 21	Date: <u>01/29/88</u>	General Revisions
Rev. 22	Date: <u>04/29/88</u>	General Revisions
Rev. 23	Date: <u>07/22/88</u>	General Revisions
Rev. 24	Date: <u>10/21/88</u>	General Revisions
Rev. 25	Date: <u>01/30/89</u>	General Revisions
Rev. 26	Date: <u>04/28/89</u>	General Revisions
Rev. 27	Date: <u>07/28/89</u>	General Revisions
Rev. 28	Date: <u>10/27/89</u>	General Revisions
Rev. 29	Date: <u>02/28/90</u>	General Revisions
Rev. 30	Date: <u>05/11/90</u>	General Revisions
Rev. 31	Date: <u>08/08/90</u>	General Revisions
Rev. 32	Date: <u>10/31/90</u>	General Revisions
Rev. 33	Date: <u>01/31/91</u>	General Revisions
Rev. 34	Date: <u>04/30/91</u>	General Revisions
Rev. 35	Date: <u>07/19/91</u>	General Revisions
Rev. 36	Date: <u>11/13/91</u>	General Revisions
Rev. 37	Date: <u>02/06/92</u>	General Revisions
Rev. 38	Date: <u>04/30/92</u>	General Revisions
Rev. 39	Date: <u>07/28/92</u>	CCC Deletion
Rev. 40	Date: <u>10/22/92</u>	General Revisions
Rev. 41	Date: <u>01/29/93</u>	General Revisions
Rev. 42	Date: <u>04/16/93</u>	General Revisions
Rev. 43	Date: <u>07/23/93</u>	General Revisions



RADIOLOGICAL EMERGENCY PLANNING DEPARTMENT PROCEDURE

REP-02 Rev. 71

Date 07/18/00

Page 8 of 34

TITLE: ACTIVATION AND NOTIFICATION OF THE
EMERGENCY OPERATIONS FACILITY ORGANIZATION

Rev. 44	Date: <u>10/26/93</u>	General Revisions
Rev. 45	Date: <u>01/14/94</u>	General Revisions
Rev. 46	Date: <u>04/15/94</u>	General Revisions
Rev. 47	Date: <u>07/22/94</u>	General Revisions
Rev. 48	Date: <u>10/18/94</u>	General Revisions
Rev. 49	Date: <u>01/27/95</u>	General Revisions
Rev. 50	Date: <u>05/05/95</u>	Editorial Revisions
Rev. 51	Date: <u>07/21/95</u>	Editorial Revisions
Rev. 52	Date: <u>10/24/95</u>	Editorial revisions resulting from Fourth Quarter 1995 review of notification rosters.
Rev. 53	Date: <u>02/16/96</u>	Editorial revisions for First Quarter 1996.
Rev. 54	Date: <u>04/19/96</u>	Editorial revisions for Second Quarter 1996.
Rev. 55	Date: <u>07/19/96</u>	Editorial revisions for Third Quarter 1996.
Rev. 56	Date: <u>10/07/96</u>	Editorial revisions for Fourth Quarter 1996. Added EOF Accident Assessment Team.
Rev. 57	Date: <u>02/28/97</u>	Editorial revisions for First Quarter 1997. Added EOF State and Local Government Liaison Call List and Attachment 4, "EOF Accountability/Fitness-for-Duty (FFD) Log for FPC Personnel."
Rev. 58	Date: <u>05/29/97</u>	Editorial revisions for Second Quarter 1997.
Rev. 59	Date: <u>08/19/97</u>	Editorial revisions for Third Quarter 1997. Added statement that Safety Assessment was performed.
Rev. 60	Date: <u>11/03/97</u>	Editorial revisions for Fourth Quarter 1997.
Rev. 61	Date: <u>02/12/98</u>	First Quarter 1998 Update
Rev. 62	Date: <u>04/27/98</u>	Second Quarter 1998 Update
Rev. 63	Date: <u>07/28/98</u>	Third Quarter 1998 Update
Rev. 64	Date: <u>10/08/98</u>	Fourth Quarter 1998 Update
Rev. 65	Date: <u>01/26/99</u>	First Quarter 1999 Update
Rev. 66	Date: <u>04/27/99</u>	Second Quarter 1999 Update
Rev. 67	Date: <u>07/09/99</u>	Third Quarter 1999 Update
Rev. 68	Date: <u>09/15/99</u>	Fourth Quarter 1999 Update
Rev. 69	Date: <u>01/17/00</u>	First Quarter 2000 Update
Rev. 70	Date: <u>04/18/00</u>	Second Quarter 2000 Update
Rev. 71	Date: <u>07/18/00</u>	Third Quarter 2000 Update



RADIOLOGICAL EMERGENCY PLANNING DEPARTMENT PROCEDURE

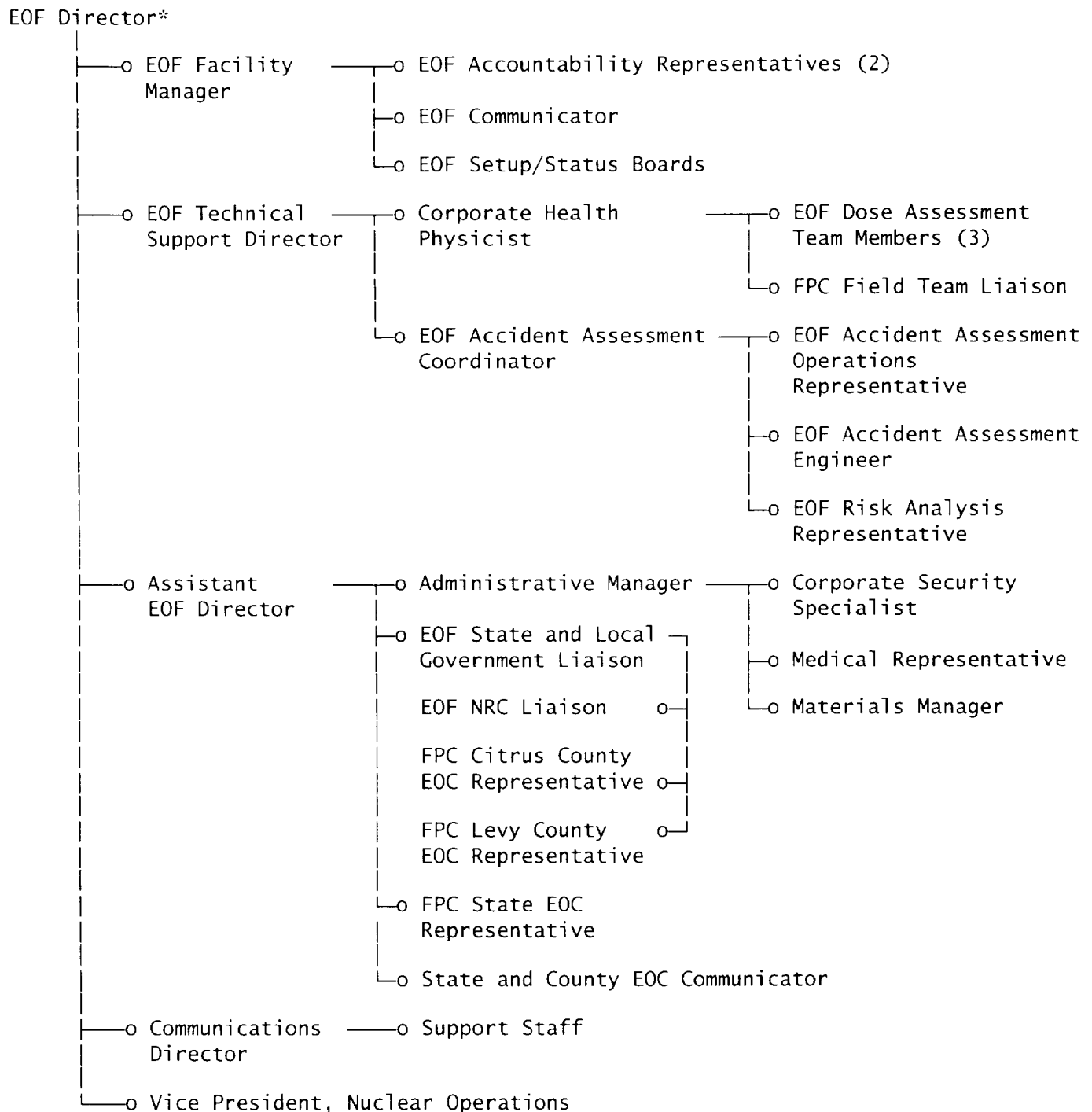
REP-02 Rev. 71

Date 07/18/00

Page 9 of 34

TITLE: ACTIVATION AND NOTIFICATION OF THE
EMERGENCY OPERATIONS FACILITY ORGANIZATION

- FIGURE 1 -
EOF NOTIFICATION NETWORK



* Nuclear Security must be called to activate the EOF group pagers.



RADIOLOGICAL EMERGENCY PLANNING DEPARTMENT PROCEDURE

REP-02 Rev. 71

Date 07/18/00

Page 10 of 34

TITLE:

ACTIVATION AND NOTIFICATION OF THE
EMERGENCY OPERATIONS FACILITY ORGANIZATION- ATTACHMENT 1 -
EOF PERSONNEL DIRECTORY AND NOTIFICATION NETWORK

(Page 1 of 9)

EOF DIRECTOR CALL LIST

	Name	Office Number	Home Number
Primary:	R. E. Grazio	352/563-4756 M/W 240-4756	352/527-8679 275-0389 (P)* 352/422-8418 (C)
Alternate:	T. H. Taylor	352/563-4338 M/W 240-3155	352/564-4200 888/803-5917 (P) 352/422-8456 (C)
Alternate:	S. L. Bernhoft	352/563-4566 M/W 240-3300	352/341-0003 274-0077 (P)* 352/422-8416 (C)
Alternate:	S. G. Johnson	352/563-4384 M/W 240-3200	352/489-0499 275-3627 (P)* 352/422-8445 (C)

P = Pager
C = Cellular PhonePositions enclosed by a box are required to declare the EOF operational.
Contact only one individual per emergency position. Check appropriate box for individual contacted.

Priority	Emergency Title	Contacted	Name	Office Number	Home Number
1	EOF Facility Manager	<input type="checkbox"/> Primary	L. G. Snow	352/563-4670 M/W 240-6169	352/563-5094 274-1159 (P)*
		<input type="checkbox"/> Alternate	D. J. Wood	352/563-4672 M/W 240-6106	352/746-0706 274-1947 (P)*
		<input type="checkbox"/> Alternate	L. W. Hardin	352/563-4591 M/W 240-6114	352/527-3662 274-1156 (P)*
		<input type="checkbox"/> Alternate	J. G. Austin	352/795-0504 M/W 240-6317	352/382-5413 275-0166 (P)*
2	Assistant EOF Director	<input type="checkbox"/> Primary	K. F. Lancaster	352/422-8931 M/W 240-8931	352/344-0855 274-8484 (P)*
		<input type="checkbox"/> Alternate	R. C. Widell	352/795-6486 M/W 240-3708	352/746-0646 274-0385 (P)* 352/422-8856 (C)
		<input type="checkbox"/> Alternate	M. A. Trump	352/563-4974 M/W 240-6174	352/527-8840 274-0481 (P)* 352/422-8473 (C)
		<input type="checkbox"/> Alternate	R. L. Linton	352/563-4680 M/W 240-6258	352/795-5512

* Access pager by dialing *900 from FPC internally OR 1-800-241-4653, then follow instructions.



RADIOLOGICAL EMERGENCY PLANNING DEPARTMENT PROCEDURE

REP-02 Rev. 71

Date 07/18/00

Page 11 of 34

TITLE: ACTIVATION AND NOTIFICATION OF THE
EMERGENCY OPERATIONS FACILITY ORGANIZATION

- ATTACHMENT 1 -
EOF PERSONNEL DIRECTORY AND NOTIFICATION NETWORK

(Page 2 of 9)

EOF DIRECTOR CALL LIST
(Continued)

	<u>Name</u>	<u>Office Number</u>	<u>Home Number</u>
Primary:	R. E. Grazio	352/563-4756 M/W 240-4756	352/527-8679 275-0389 (P)* 352/422-8418 (C)
Alternate:	T. H. Taylor	352/563-4338 M/W 240-3155	352/564-4200 888/803-5917 (P) 352/422-8456 (C)
Alternate:	S. L. Bernhoft	352/563-4566 M/W 240-3300	352/341-0003 274-0077 (P)* 352/422-8416 (C)
Alternate:	S. G. Johnson	352/563-4384 M/W 240-3200	352/489-0499 275-3627 (P)* 352/422-8445 (C)

P = Pager
C = Cellular Phone

Positions enclosed by a box are required to declare the EOF operational.
Contact only one individual per emergency position. Check appropriate box for individual contacted.

<u>Priority</u>	<u>Emergency Title</u>	<u>Contacted</u>	<u>Name</u>	<u>Office Number</u>	<u>Home Number</u>
3	EOF Technical Support Director	<input type="checkbox"/> Primary	J. A. Ranalli	352/563-4984 M/W 240-3284	352/597-7610 275-3704 (P)* 352/422-8893 (C)
		<input type="checkbox"/> Alternate	A. Petrowsky	352/563-4576 M/W 240-3576	352/382-3482 274-3944 (P)* 352/422-8428 (C)
		<input type="checkbox"/> Alternate	T. E. Williams	352/563-4356 M/W 240-3886	352/795-9097 274-8814 (P)* 352/422-8513 (C)
		<input type="checkbox"/> Alternate	H. B. Oates	352/563-4789 M/W 240-3777	352/382-4652 275-3675 (P)* 352/422-8414 (C)
4	Communications Director	<input type="checkbox"/> Primary	M. S. Harris	352/563-4489 M/W 240-4489	352/527-9372 274-3388 (P)* 888/760-7104 (P) 352/422-8602 (C)
		<input type="checkbox"/> Alternate	M. N. Forbrick	727/820-5023 M/W 230-5023	727/823-9693 800/940-7076 (P) 727/403-5516 (C)
		<input type="checkbox"/> Alternate	R. A. Janka	407/475-2400 M/W 280-2400	407/659-3784 or 727-866-6641 888/939-3410 (P) 407/257-3724 (C)
5	Vice President, Nuclear Operations	<input type="checkbox"/>	J. P. Cowan	352/563-4594 M/W 240-3104	352/795-0964 352/422-8410 (C)

* Access pager by dialing *900 from FPC internally OR 1-800-241-4653, then follow instructions.



RADIOLOGICAL EMERGENCY PLANNING DEPARTMENT PROCEDURE

REP-02 Rev. 71

Date 07/18/00

Page 12 of 34

TITLE: ACTIVATION AND NOTIFICATION OF THE
EMERGENCY OPERATIONS FACILITY ORGANIZATION

- ATTACHMENT 1 -
EOF PERSONNEL DIRECTORY AND NOTIFICATION NETWORK

(Page 3 of 9)

EOF FACILITY MANAGER CALL LIST

	Name	Office Number	Home Number
Primary:	L. G. Snow	352/563-4670 M/W 240-6169	352/563-5094 274-1159 (P)*
Alternate:	D. J. Wood	352/563-4672 M/W 240-6106	352/746-0706 274-1947 (P)*
Alternate:	L. W. Hardin	352/563-4591 M/W 240-6114	352/527-3662 274-1156 (P)*
Alternate:	J. G. Austin	352/795-0504 M/W 240-6317	352/382-5413 275-0166 (P)*

P = Pager
C = Cellular Phone

Contact only one individual per emergency position. Check appropriate box for individual contacted.

Priority	Emergency Title	Contacted	Name	Office Number	Home Number
1	EOF Accountability Representative (Contact a minimum of two individuals.)	<input type="checkbox"/> Primary	F. A. Plummer	352/795-0504 M/W 240-6363	352/567-7067
		<input type="checkbox"/> Alternate	C. R. Dearing	352/795-0504 M/W 240-6111	352/746-0151
		<input type="checkbox"/> Alternate	C. L. Walters	352/795-0504 M/W 240-6109	352/489-1235
		<input type="checkbox"/> Alternate	B. R. Bagwell	352/795-0504 M/W 240-6222	352/563-2598
2	EOF Communicator	<input type="checkbox"/> Primary	J. P. Owen	352/795-0504 M/W 240-6190	352/795-2539 or 795-0344
		<input type="checkbox"/> Alternate	K. E. Hampton	352/795-0504 M/W 240-6282	352/382-5034
		<input type="checkbox"/> Alternate	H. D. Roberts	352/795-0504 M/W 240-6128	352/628-4042
3	EOF Setup/Status Boards** (Notify all positions for initial setup.)	<input type="checkbox"/> Primary	R. G. Cardinali	352/795-0504 M/W 240-6185	352/726-5267
		<input type="checkbox"/> Alternate	J. C. Elam	352/795-0504 M/W 240-6134	352/795-4784
		<input type="checkbox"/> Alternate	W. E. Gwaltney	352/795-0504 M/W 240-6118	352/746-0359
		<input type="checkbox"/> Alternate	D. W. Savage	352/795-0504 M/W 240-6289	352/489-5043
		<input type="checkbox"/> Alternate	R. L. Rogers	352/795-0504 M/W 240-6342	352/563-5563 275-3381 (P)*
		<input type="checkbox"/> Alternate	L. W. Hensley	352/795-0504 M/W 240-6186	352/726-2302
		<input type="checkbox"/> Alternate	M. A. Grider	352/795-0504 M/W 240-6119	352/795-1254
		<input type="checkbox"/> Alternate	G. J. Sweeney	352/795-0504 M/W 240-6267	352/527-2380
		<input type="checkbox"/> Alternate	R. W. Armstrong	352/795-0504 M/W 240-6118	352/726-9073 274-8448 (P)*

*Access pager by dialing *900 from FPC internally OR 1-800-241-4653, then follow instructions.

**First responsibility is the setup of the EOF. After setup is complete, the EOF Facility Manager will assign personnel for updating the status boards.



RADIOLOGICAL EMERGENCY PLANNING DEPARTMENT PROCEDURE

REP-02 Rev. 71

Date 07/18/00

Page 13 of 34

TITLE:

ACTIVATION AND NOTIFICATION OF THE
EMERGENCY OPERATIONS FACILITY ORGANIZATION- ATTACHMENT 1 -
EOF PERSONNEL DIRECTORY AND NOTIFICATION NETWORK

(Page 4 of 9)

ASSISTANT EOF DIRECTOR CALL LIST

	Name	Office Number	Home Number
Primary:	K. F. Lancaster	352/422-8931 M/W 240-8931	352/344-0855 274-8484 (P)*
Alternate:	R. C. Widell	352/795-6486 M/W 240-3708	352/746-0646 274-0385 (P)* 352/422-8856 (C)
Alternate:	M. A. Trump	352/563-4974 M/W 240-6174	352/527-8840 274-0481 (P)* 352/422-8473 (C)
Alternate:	R. L. Linton	352/563-4680 M/W 240-6258	352/795-5512

P = Pager
C = Cellular Phone

Contact only one individual per emergency position unless otherwise indicated. Check appropriate box for individual contacted.

Priority	Emergency Title	Contacted	Name	Office Number	Home Number
1	Administrative Manager	<input type="checkbox"/> Primary	J. M. Anna	352/563-4480 M/W 240-4480	352/795-0067
		<input type="checkbox"/> Alternate	N. J. Hooper	352/422-8431 M/W 240-8431	352/795-9568 274-1212 (P)*
		<input type="checkbox"/> Alternate	M. A. Riley	352/563-4848 M/W 240-4848	352/489-5875
2	EOF State and Local Government Liaison	<input type="checkbox"/> Primary	F. Frando	352/563-4795 M/W 240-3045	352/465-7343
		<input type="checkbox"/> Alternate	L. V. Cecilia	352/563-4546 M/W 240-3190	352/563-0046 275-3679 (P)*
		<input type="checkbox"/> Alternate	P. E. Infanger	352/563-4796 M/W 240-3166	352/873-4863 274-4935 (P)*
3	FPC State EOC Representative	<input type="checkbox"/> Primary	R. M. Bright	352/563-4771 M/W 240-3319	352/447-4708 274-8887 (P)*
		<input type="checkbox"/> Alternate	K. R. Wilson	352/795-6486 M/W 240-8933	352/332-8709 352/422-8933 (C)
4	State and County EOC Communicator	<input type="checkbox"/> Primary	R. G. Surber	352/795-0504 M/W 240-6326	352/795-8014
		<input type="checkbox"/> Alternate	B. P. Komara	352/563-4679 M/W 240-6140	352/795-3959 274-7541 (P)*
		<input type="checkbox"/> Alternate	M. J. Fuller	352/795-0504 M/W 240-6184	352/527-4510
5	INPO Duty Officer			800/321-0614	

* Access pager by dialing *900 from FPC internally OR 1-800-241-4653, then follow instructions.



RADIOLOGICAL EMERGENCY PLANNING DEPARTMENT PROCEDURE

REP-02 Rev. 71

Date 07/18/00

Page 14 of 34

TITLE:

ACTIVATION AND NOTIFICATION OF THE
EMERGENCY OPERATIONS FACILITY ORGANIZATION

- ATTACHMENT 1 -

(Page 5 of 9)

EOF PERSONNEL DIRECTORY AND NOTIFICATION NETWORK

EOF TECHNICAL SUPPORT DIRECTOR CALL LIST

	Name	Office Number	Home Number
Primary:	J. A. Ranalli	352/563-4984 M/W 240-3284	352/597-7610 275-3704 (P)* 352/422-8893 (C)
Alternate:	A. Petrowsky	352/563-4576 M/W 240-3576	352/382-3482 274-3944 (P)* 352/422-8428 (C)
Alternate:	T. E. Williams	352/563-4356 M/W 240-3886	352/795-9097 274-8814 (P)* 352/422-8513 (C)
Alternate:	H. B. Oates	352/563-4789 M/W 240-3777	352/382-4652 275-3675 352/422-8414 (C)

P = Pager
C = Cellular Phone

Positions enclosed by a box are required to declare the EOF operational.
Contact only one individual per emergency position unless otherwise indicated. Check appropriate box for individual contacted.

Priority	Emergency Title	Contacted	Name	Office Number	Home Number
1	Corporate Health Physicist	<input type="checkbox"/> Primary	S. M. Garry	352/563-4777 M/W 240-3281	352/746-9625 274-7686 (P)* 352/422-8457 (C)
		<input type="checkbox"/> Alternate	A. Kazemfar	352/563-4874 M/W 240-3333	352/795-7988 274-3603 (P)* 352/422-8825 (C)
		<input type="checkbox"/> Alternate	D. A. McCollough	352/795-6486 M/W 240-4386	352/564-9288 274-3407 (P)*
2	EOF Accident Assessment Coordinator	<input type="checkbox"/> Primary	J. G. Smith	352/795-0504 M/W 240-6042	352/795-3827 274-6859 (P)*
		<input type="checkbox"/> Alternate	G. P. Hebb	352/795-6486 M/W 240-3884	352/382-3391 275-2952 (P)* 352/422-8604 (C)
		<input type="checkbox"/> Alternate	J. L. Springer	352/795-6486 M/W 240-3452	352/795-7508 274-3390 (P)*

* Access pager by dialing *900 from FPC internally OR 1-800-241-4653, then follow instructions.



RADIOLOGICAL EMERGENCY PLANNING DEPARTMENT PROCEDURE

REP-02 Rev. 71

Date 07/18/00

Page 15 of 34

TITLE:

ACTIVATION AND NOTIFICATION OF THE
EMERGENCY OPERATIONS FACILITY ORGANIZATION- ATTACHMENT 1 -
EOF PERSONNEL DIRECTORY AND NOTIFICATION NETWORK

(Page 6 of 9)

CORPORATE HEALTH PHYSICIST CALL LIST

	Name	Office Number	Home Number
Primary:	S. M. Garry	352/563-4777 M/W 240-3281	352/746-9625 274-7686 (P)* 352/422-8457 (C)
Alternate:	A. Kazemfar	352/563-4874 M/W 240-3333	352/795-7988 274-3603 (P)* 352/422-8825 (C)
Alternate:	D. A. McCollough	352/795-6486 M/W 240-4386	352/564-9288 274-3407 (P)*

P = Pager
C = Cellular Phone

Contact only one individual per emergency position unless otherwise indicated. Check appropriate box for individual contacted.

Priority	Emergency Title	Contacted	Name	Office Number	Home Number
1	EOF Dose Assessment Member (Contact a minimum of three individuals for this position.)	<input type="checkbox"/> Primary	P. F. Ezzell	352/563-4778 M/W 240-3624	352/795-6114 274-8413 (P)*
		<input type="checkbox"/> Alternate	J. H. Payne	352/563-4306 M/W 240-3126	352/465-4034 274-8303 (P)*
		<input type="checkbox"/> Alternate	G. H. Cadwell	352/422-8995 M/W 240-8995	352/795-4347 274-8479 (P)*
		<input type="checkbox"/> Alternate	J. D. Gilbert	352/563-2943 M/W 240-3173	352/382-4331 274-3260 (P)* 352/422-8469 (C)
		<input type="checkbox"/> Alternate	S. D. Brown	352/795-0504 M/W 240-6327	352/527-9374 274-1380 (P)*
2	FPC Field Team Liaison	<input type="checkbox"/> Primary	D. J. Bourscheid	352/795-0504 M/W 240-6135	352/795-3996
		<input type="checkbox"/> Alternate	S. D. Mansfield	352/795-0504 M/W 240-6172	352/795-0532 275-3380 (P)*
		<input type="checkbox"/> Alternate	Member of TSC Radiation Monitoring Team		

* Access pager by dialing *900 from FPC internally OR 1-800-241-4653, then follow instructions.



RADIOLOGICAL EMERGENCY PLANNING DEPARTMENT PROCEDURE

REP-02 Rev. 71

Date 07/18/00

Page 16 of 34

TITLE:**ACTIVATION AND NOTIFICATION OF THE
EMERGENCY OPERATIONS FACILITY ORGANIZATION**

- ATTACHMENT 1 -
EOF PERSONNEL DIRECTORY AND NOTIFICATION NETWORK

(Page 7 of 9)

EOF ACCIDENT ASSESSMENT COORDINATOR CALL LIST

	<u>Name</u>	<u>Office Number</u>	<u>Home Number</u>
Primary:	J. G. Smith	352/795-0504 M/W 240-6042	352/795-3827 274-6859 (P)*
Alternate:	G. P. Hebb	352/795-6486 M/W 240-3884	352/382-3391 275-2952 (P)* 352/422-8604 (C)
Alternate:	J. L. Springer	352/795-6486 M/W 240-3452	352/795-7508 274-3390 (P)*

P = Pager
C = Cellular Phone

Contact only one individual per emergency position. Check appropriate box for individual contacted.

<u>Priority</u>	<u>Emergency Title</u>	<u>Contacted</u>	<u>Name</u>	<u>Office Number</u>	<u>Home Number</u>
1	EOF Accident Assessment Operations Representative	<input type="checkbox"/> Primary	C. M. Crosten	352/795-0504 M/W 240-6191	352/795-8020 274-8462 (P)*
		<input type="checkbox"/> Alternate	A. T. Kennedy	352/795-0504 M/W 240-6129	352/563-1739 274-8462 (P)*
		<input type="checkbox"/> Alternate	M. Gallian	352/795-0504 M/W 240-6290	352/795-9044 274-8462 (P)*
		<input type="checkbox"/> Alternate	M. P. Holmes	352/795-0504 M/W 240-6254	352/795-1713
		<input type="checkbox"/> Alternate	D. E. Smith	352/795-0504 M/W 240-6253	352/795-8009
2	EOF Accident Assessment Engineer	<input type="checkbox"/> Primary	T. V. Austin	352/563-4515 M/W 240-3046	352/795-7265 275-3465 (P)*
		<input type="checkbox"/> Alternate	J. L. O'Brian	352/795-6486 M/W 240-3832	352/344-4003 352/422-8813 (C)
		<input type="checkbox"/> Alternate	S. J. Roe	352/795-6486 M/W 240-3516	352/628-0158 274-6749 (P)*
		<input type="checkbox"/> Alternate	S. K. Balliet	352/563-4508 M/W 240-3394	352/564-1795 274-3945 (P)*
		<input type="checkbox"/> Alternate	J. S. Endsley	352/563-4866 M/W 240-3070	352/795-5382 274-2912 (P)*
		<input type="checkbox"/> Alternate	R. Iwachow	352/795-6486 M/W 240-3562	352/746-4865 274-6756 (P)* 352/422-8471 (C)
3	EOF Risk Analysis Representative	<input type="checkbox"/> Primary	D. N. Miskiewicz	352/795-6486 M/W 240-3019	352/746-0685 274-0436 (P)*
		<input type="checkbox"/> Alternate	J. R. Weaver	352/795-6486 M/W 240-3315	352/795-8924
		<input type="checkbox"/> Alternate	L. W. Harris	352/795-6486 M/W 240-3705	352/489-3197 274-6739 (P)*

* Access pager by dialing *900 from FPC internally OR 1-800-241-4653, then follow instructions.



RADIOLOGICAL EMERGENCY PLANNING DEPARTMENT PROCEDURE

REP-02 Rev. 71

Date 07/18/00

Page 17 of 34

TITLE:

ACTIVATION AND NOTIFICATION OF THE
EMERGENCY OPERATIONS FACILITY ORGANIZATION- ATTACHMENT 1 -
EOF PERSONNEL DIRECTORY AND NOTIFICATION NETWORK

(Page 8 of 9)

ADMINISTRATIVE MANAGER CALL LIST

	Name	Office Number	Home Number
Primary:	J. M. Anna	352/563-4480 M/W 240-4480	352/795-0067
Alternate:	N. J. Hooper	352/422-8431 M/W 240-8431	352/795-9568 274-1212 (P)*
Alternate:	M. A. Riley	352/563-4848 M/W 240-4848	352/489-5875

P = Pager
C = Cellular Phone

Contact only one individual per emergency position. Check appropriate box for individual contacted.

Priority	Emergency Title	Contacted	Name	Office Number	Home Number
1	Corporate Security Specialist	<input type="checkbox"/> Primary	D. H. Harrelson	352/563-4376 M/W 240-4376	352/637-1061 276-1739 (P)** 352/422-3475 (C)
		<input type="checkbox"/> Alternate	D. D. Watson	352/563-4375 M/W 240-4375	352/726-0756 274-9169 (P)*
		<input type="checkbox"/> Alternate	On-Duty Captain	M/W 240-4307	
2	Medical Representative	<input type="checkbox"/> Primary	D. A. Brown	352/563-4353 M/W 240-4353	352/465-3989 275-0233 (P)*
		<input type="checkbox"/> Alternate	K. G. Linhart	352/563-4352 M/W 240-4352	352/489-3567 274-4088 (P)*
		<input type="checkbox"/> Alternate	D. Fugate	352/563-4355 M/W 240-4355	352/382-5583
3	Materials Manager	<input type="checkbox"/> Primary	R. J. Slottke	352/563-4715 M/W 240-4715	352/795-6346 274-4070 (P)* 352/422-8421 (C)
		<input type="checkbox"/> Alternate	G. A. Christie	352/563-4329 M/W 240-4329	352/795-2414 274-9002 (P)*
		<input type="checkbox"/> Alternate	M. I. Ruether	352/563-4342 M/W 240-4342	352/382-4341

* Access pager by dialing *900 from FPC internally OR 1-800-241-4653, then follow instructions.

** Access pager by dialing 1-800-280-6493.



RADIOLOGICAL EMERGENCY PLANNING DEPARTMENT PROCEDURE

REP-02 Rev. 71

Date 07/18/00

Page 18 of 34

TITLE:

ACTIVATION AND NOTIFICATION OF THE
EMERGENCY OPERATIONS FACILITY ORGANIZATION- ATTACHMENT 1 -
EOF PERSONNEL DIRECTORY AND NOTIFICATION NETWORK

(Page 9 of 9)

EOF STATE AND LOCAL GOVERNMENT LIAISON CALL LIST

	<u>Name</u>	<u>Office Number</u>	<u>Home Number</u>
Primary:	F. Frando	352/563-4795 M/W 240-3045	352/465-7343
Alternate:	L. V. Cecilia	352/563-4546 M/W 240-3190	352/563-0046 275-3679 (P)*
Alternate:	P. E. Infanger	352/563-4796 M/W 240-3166	352/873-4863 274-4935 (P)*

P = Pager
C = Cellular Phone

Contact only one individual per emergency position. Check appropriate box for individual contacted.

<u>Priority</u>	<u>Emergency Title</u>	<u>Contacted</u>	<u>Name</u>	<u>Office Number</u>	<u>Home Number</u>
1	EOF NRC Liaison	<input type="checkbox"/> Primary	W. J. Pike	352/563-4970 M/W 240-3642	352/527-8853 275-3685 (P)* 352/422-8409 (C)
		<input type="checkbox"/> Alternate	P. M. Peterson	352/795-6486 M/W 240-3602	352/382-0342 275-3683 (P)*
		<input type="checkbox"/> Alternate	R. L. McLaughlin	352/563-4836 M/W 240-3463	352/212-7620 (C) 275-0171 (P)*
2	FPC Citrus County EOC Representative	<input type="checkbox"/> Primary	M. R. Casada	352/795-6486 M/W 240-3354	352/726-2317
		<input type="checkbox"/> Alternate	G. W. Wilson	352/795-6486 M/W 240-3850	352/746-3174 274-0596 (P)*
3	FPC Levy County EOC Representative	<input type="checkbox"/> Primary	M. E. Collins	352/795-6486 M/W 240-3648	352/331-6559
		<input type="checkbox"/> Alternate	L. R. McDougal	352/563-4988 M/W 240-3988	352/375-7033 275-3682 (P)* 352/422-8598 (C)

* Access pager by dialing *900 from FPC internally OR 1-800-241-4653, then follow instructions.



RADIOLOGICAL EMERGENCY PLANNING DEPARTMENT PROCEDURE

REP-02 Rev. 71

Date 07/18/00

Page 19 of 34

TITLE:

ACTIVATION AND NOTIFICATION OF THE
EMERGENCY OPERATIONS FACILITY ORGANIZATION

- ATTACHMENT 2 -

FACILITY DIRECTORY

Facility

Location

Telephone

EOF and ENC

Nuclear Operations
Training Facility
Crystal River, FL

352/795-0504

FPC Business Offices:

Dunnellon, FL

352/465-2334
M/W 220-6550

Inverness, FL

352/726-4049

Crystal River, FL

352/795-6382
M/W 240-6307

TSC/OSC

CR-3 Nuclear Plant
Crystal River, FL

Refer to Emergency
Facility Telephone
Book.



RADIOLOGICAL EMERGENCY PLANNING DEPARTMENT PROCEDURE

REP-02 Rev. 71

Date 07/18/00

Page 20 of 34

TITLE: ACTIVATION AND NOTIFICATION OF THE
EMERGENCY OPERATIONS FACILITY ORGANIZATION

- ATTACHMENT 3 -
OFF-SITE ORGANIZATIONS COMMUNICATIONS CONTACTS

(Page 1 of 10)

SERVICE	NAME/CONTACT	TELEPHONE	FPC CONTACT(S)
AIRCRAFT SERVICE	FPC Flight Dept. (1) Jill A. Raley (2) Joe R. Skidmore	727/531-2308 (W) (1) 727/321-9633 (H) 727/529-6028 (P) (2) 941/747-9766 (H) 800/913-0828 (P)	
AMBULANCE SERVICE (Non-Radiological and Radiological)	Florida Regional Emergency Medical Services 110 N. Apopka Ave. Inverness, FL	9-1-1	
AMERICAN NUCLEAR INSURERS (ANI) (Property Damage and Fire Protection Impairments)		860/561-3433	
BABCOCK & WILCOX (B&W) (See FRAMATOME TECHNOLOGIES.)			
COUNTY EMERGENCY MANAGEMENT/DISASTER PREPAREDNESS			
CITRUS COUNTY	James T. Soukup FPC Representative at Citrus EOC	352/726-4488, X277 352/746-6555 (24 hrs.) 352/344-8779 (H) 352/898-5926 (P) 352/422-4392 (C) 352/527-2407	EOF State and Local Government Liaison
LEVY COUNTY	Paula E. Lane FPC Representative at Levy EOC	352/486-5213 352/490-5263 (H) 352/215-8364 (C) 800/241-4653 (P) (274-5552) 352/486-5428	EOF State and Local Government Liaison



RADIOLOGICAL EMERGENCY PLANNING DEPARTMENT PROCEDURE

REP-02 Rev. 71

Date 07/18/00

Page 21 of 34

TITLE:

ACTIVATION AND NOTIFICATION OF THE
EMERGENCY OPERATIONS FACILITY ORGANIZATION

- ATTACHMENT 3 -

(Page 2 of 10)

OFF-SITE ORGANIZATIONS COMMUNICATIONS CONTACTS

SERVICE	NAME/CONTACT	TELEPHONE	FPC CONTACT(S)
DOE (U.S. DEPARTMENT OF ENERGY)			
REAC/TS, OAK RIDGE ASSOCIATED UNIVERSITIES (ORAU)	Dr. Robert C. Ricks	865/576-3131 (8 a.m. - 4:30 p.m.) 865/576-1005 (24 hr./emergency)	
OAK RIDGE NATIONAL LABORATORIES (ORNL)	Dr. Lee R. Riciputi	865/574-2449	
DOE RADIOLOGICAL ASSISTANCE PROGRAM (RAP)		865/576-1005 865/525-7885	
E			
ELECTRIC POWER RESEARCH INSTITUTE (EPRI) (California)		650/855-2000 650/855-2321 (EPRI Security)	
NUCLEAR SAFETY DEPT. OF NUCLEAR POWER DIVISION OF EPRI	Theodore Marston	650/855-2997	
U.S. ENVIRONMENTAL PROTECTION AGENCY, REGION IV (EPA)		404/562-8700 (24 hr. emergency response)	Assistant EOF Director
EMERGENCY EQUIPMENT REPAIR			
RADIOLOGICAL MONITORING EQUIPMENT	Don G. Price, Jr. Southeastern Atomic Labs (Gainesville, FL)	352/372-9716 (W)	
F			
FEDERAL EMERGENCY MANAGEMENT AGENCY, REGION IV (FEMA) (Atlanta, GA)		770/220-5200 (24 hr. service)	EOF Director



RADIOLOGICAL EMERGENCY PLANNING DEPARTMENT PROCEDURE

REP-02 Rev. 71

Date 07/18/00

Page 22 of 34

TITLE: ACTIVATION AND NOTIFICATION OF THE
EMERGENCY OPERATIONS FACILITY ORGANIZATION

- ATTACHMENT 3 -
OFF-SITE ORGANIZATIONS COMMUNICATIONS CONTACTS

(Page 3 of 10)

SERVICE	NAME/CONTACT	TELEPHONE	EOF CONTACT(S)
FPC SUPPORT**			
CLAIMS	Richard L. Anderson	Office: 727/826-4392 M/W 230-4392 Pager: 800/280-6493 276-2491 Home: 727/391-8969	
	Tom E. Moorhouse	Office: 727/826-4300 M/W 230-4300 Pager: 800/280-6493 276-2492 Home: 727/443-5500	
COMPUTER SERVICES SUPPORT (Information Technology)	Hugh H. Murphy	Office: 352/563-4744 M/W 240-4744 Pager: 800/280-6493 276-1437 Home: 727/844-0222	
	Darryl L. Kendall	Office: 352/563-2943 M/W 240-4162 Pager: 800/280-6493 276-1456 Home: 352/563-5273	
EMPLOYEE INFORMATION (FPC) (Human Resources Systems Request)	Marilyn C. Marra	Office: 727/820-5795 M/W 230-5795 Home: 727/319-4161	
	Ray A. Edmonds, Jr.	Office: 352/795-0504 M/W 240-6376 Pager: 800/280-6493 276-2125 Home: 352/795-0380	

* Access pager by dialing *900 from FPC internally OR 1-800-241-4653, then follow instructions.

** The individuals in this category are contact points for support and do not necessarily respond to the EOF.



RADIOLOGICAL EMERGENCY PLANNING DEPARTMENT PROCEDURE

REP-02 Rev. 71

Date 07/18/00

Page 23 of 34

TITLE: ACTIVATION AND NOTIFICATION OF THE
EMERGENCY OPERATIONS FACILITY ORGANIZATION

- ATTACHMENT 3 -
OFF-SITE ORGANIZATIONS COMMUNICATIONS CONTACTS

(Page 4 of 10)

SERVICE	NAME/CONTACT	TELEPHONE	EOF CONTACT(S)
FPC SUPPORT** (Cont'd)			
FINANCE/ ACCOUNTING	Phil Yee	Office: 727/820-5331 M/W 230-5331 Home: 727/578-0862	
LABOR (Supplemental Labor Resources)	Susan I. McDonald	Office: 352/563-4702 M/W 240-5202 Home: 352/344-9126	
LEGAL	Rodney E. Gaddy	Office: 727/820-5098 M/W 230-5098 Home: 813/855-8438	
RISK MANAGEMENT	Beth J. Warren Newman L. (Hoop) Hoopingarner	Office: 727/820-5979 M/W 230-5979 Home: 727/538-2150 Office: 727/820-5986 M/W 230-5986 Home: 727/532-0792	

* Access pager by dialing *900 from FPC internally OR 1-800-241-4653, then follow instructions.

** The individuals in this category are contact points for support and do not necessarily respond to the EOF.



RADIOLOGICAL EMERGENCY PLANNING DEPARTMENT PROCEDURE

REP-02 Rev. 71

Date 07/18/00

Page 24 of 34

TITLE:

ACTIVATION AND NOTIFICATION OF THE
EMERGENCY OPERATIONS FACILITY ORGANIZATION

- ATTACHMENT 3 -

(Page 5 of 10)

OFF-SITE ORGANIZATIONS COMMUNICATIONS CONTACTS

SERVICE	NAME/CONTACT	TELEPHONE	EOF CONTACT(S)
FPC SUPPORT** (Cont'd)			
SIMULATOR SUPPORT	R. Dave deMontfort	Office: 352/563-4948 M/W 240-6248 Pager: 275-0287* Home: 352/795-9693	
	Don E. Smith	Office: 352/795-0504 M/W 240-6253 Home: 352/795-8009	
TELECOMMUNICATIONS (Information Technology Support)	F. Jon Cembruch	Office: 352/795-6844 M/W 240-6207 Pager: 276-2999*** Cell: 352/422-8406 Home: 904/454-1226	
	Donna L. Davis	Office: 352/563-4997 M/W 240-6879 Pager: 276-2376*** Home: 352/621-9737	
TRANSPORTATION	F. Jay Wooldridge	Office: 352/563-4996 M/W 240-5678 Pager: 276-2378*** Cell: 352/422-8717 Home: 352/795-5974	
	John E. Farabaugh		
	F. Jay Wooldridge	Office: 727/893-9721 M/W 220-3721 Pager: 276-1238*** Home: 727/544-4182	
	Gail F. Phifer (Mr.)	Office: 727/893-9382 M/W 220-3382 Pager: 276-1248*** Home: 727/381-4126	

* Access pager by dialing *900 from FPC internally OR 1-800-241-4653, then follow instructions.

** The individuals in this category are contact points for support and do not necessarily respond to the EOF.

*** Access pager by dialing 1-800-280-6493, then follow instructions.



RADIOLOGICAL EMERGENCY PLANNING DEPARTMENT PROCEDURE

REP-02 Rev. 71

Date 07/18/00

Page 25 of 34

TITLE: ACTIVATION AND NOTIFICATION OF THE
EMERGENCY OPERATIONS FACILITY ORGANIZATION

- ATTACHMENT 3 -
OFF-SITE ORGANIZATIONS COMMUNICATIONS CONTACTS

(Page 6 of 10)

SERVICE	NAME/CONTACT	TELEPHONE	EOF CONTACT(S)
FRAMATOME TECHNOLOGIES (formerly Babcock & Wilcox)			
FRAMATOME TECHNOLOGIES	Framatome Technologies	804/832-3000 or -3001 (switchboard - 24 hrs.)	EOF Accident Assessment Coordinator
FRAMATOME TECHNOLOGIES CUSTOMER SERVICE MANAGER	John M. Helme	804/832-3359 (W) 804/525-0583 (H)	
GILBERT ASSOCIATES, INC. (See Parsons Power.)			
HOSPITALS NON-RADIOLOGICAL OR RADIOLOGICAL INJURIES:			
SEVEN RIVERS COMMUNITY HOSPITAL		352/795-6560 352/795-8335 (Emergency Room)	
CITRUS MEMORIAL HOSPITAL		352/726-1551 352/344-6569 (Emergency Room)	
I			
INSTITUTE OF NUCLEAR POWER OPERATIONS (INPO)	INPO Duty Officer Emergency Response Center	800/321-0614 770/644-8000 (switchboard) TELECOPY: (PRI) 770/644-8549 (ALT) 770/644-8567	EOF Director/ Communications Director

* Access pager by dialing *900 from FPC internally OR 1-800-241-4653, then follow instructions.



RADIOLOGICAL EMERGENCY PLANNING DEPARTMENT PROCEDURE

REP-02 Rev. 71

Date 07/18/00

Page 26 of 34

TITLE:

ACTIVATION AND NOTIFICATION OF THE
EMERGENCY OPERATIONS FACILITY ORGANIZATION

- ATTACHMENT 3 -
OFF-SITE ORGANIZATIONS COMMUNICATIONS CONTACTS

(Page 7 of 10)

SERVICE	NAME/CONTACT	TELEPHONE	FPC CONTACT(S)
LAW ENFORCEMENT AGENCIES			
CITRUS COUNTY SHERIFF	Sheriff Jeffrey J. Dawsy	352/726-4488 9-1-1	EOF Security Representative
FLORIDA HIGHWAY PATROL	Brooksville, FL	352/754-6767 (800/500-1240)	
	Gainesville, FL	352/955-2150	
FLORIDA MARINE PATROL		352/447-1633 (8 a.m. - 5 p.m.) 800/342-5367 (Tampa/after hours)	
LEVY COUNTY SHERIFF	Sheriff Ted Glass	352/486-5111 800/538-9767	
NGRC (NUCLEAR GENERAL REVIEW COMMITTEE)			
NGRC	John J. Holden	352/563-4477 (W) 352/382-0280 (H)	
	R. E. (Bob) Grazio	352/563-4756 (W) 352/527-8679 (H)	
NRC (U.S. NUCLEAR REGULATORY COMMISSION)			
OFFICE OF NUCLEAR REACTOR REGULATION (NRR)	Project Manager Leonard A. Wiens	301/415-1495 (W)	EOF Director
REGION II OFFICE OF INSPECTION AND ENFORCEMENT	Luis A. Reyes	404/562-4410 (W)	EOF Director



RADIOLOGICAL EMERGENCY PLANNING DEPARTMENT PROCEDURE

REP-02 Rev. 71

Date 07/18/00

Page 27 of 34

TITLE: ACTIVATION AND NOTIFICATION OF THE
EMERGENCY OPERATIONS FACILITY ORGANIZATION

- ATTACHMENT 3 -
OFF-SITE ORGANIZATIONS COMMUNICATIONS CONTACTS

(Page 8 of 10)

SERVICE	NAME/CONTACT	TELEPHONE	FPC CONTACT(S)
NRC (U.S. NUCLEAR REGULATORY COMMISSION) (Cont'd)			
CR-3 RESIDENT INSPECTOR	J. "Scott" Stewart Steven P. Sanchez	352/795-7677 (W) 352/795-7678 (W) 352/527-9474 (H) 274-3420 (P)* 352/338-7571 (H) 274-9855 (P)*	EOF Director
OPERATIONS RESPONSE CENTER (Rockville, MD)		301/816-5100 301/951-0550	EOF Director
REACTOR PROJECTS (REGION II) (Atlanta, GA)	Loren R. Plisco	404/562-4501 800/636-2703 (P)	EOF Director
NRC REGION II HEADQUARTERS (Atlanta, GA)		404/562-4400	EOF Director
NRC REGION II FACSIMILE (Atlanta, GA)		404/562-4900 404/562-4901	
NRC OPERATIONS CENTER FACSIMILE (Rockville, MD)		301/816-5151	
PUBLIC INFORMATION OFFICE (Atlanta, GA)	Ken M. Clark Roger D. Hannah	404/562-4416 404/562-4980 (FAX) 404/562-4417	Corporate Communications Director
NRC OPERATIONS CENTER (Rockville, MD)	Emergency Notification System (ENS)	(1) 301/816-5100 (2) 301/951-0550 (3) 301/415-0553	EOF Director
NRC OPERATIONS CENTER (Rockville, MD)	Health Physics Network (HPN)	(1) 301/816-5100 (2) 301/951-0550	EOF Director
NRC OPERATIONS CENTER (Rockville, MD)	NRC Operator	301/415-7000	EOF Director

* Access pager by dialing *900 from FPC internally OR 1-800-241-4653, then follow instructions.

TITLE:

ACTIVATION AND NOTIFICATION OF THE EMERGENCY OPERATIONS FACILITY ORGANIZATION

- ATTACHMENT 3 -

(Page 9 of 10)

OFF-SITE ORGANIZATIONS COMMUNICATIONS CONTACTS

SERVICE	NAME/CONTACT	TELEPHONE	FPC CONTACT(S)
OFF-SITE MONITORING			
HYDROLOGIC: SOUTHWEST FLORIDA WATER MANAGEMENT DISTRICT (Brooksville, FL)		352/796-7211 352/796-1211 (after hours)	
METEOROLOGICAL: FAA FLIGHT SERVICE STATION (Gainesville, FL) (St. Petersburg, FL) TAMPA WEATHER SERVICE (Ruskin, FL)	Flight Service Station Flight Service Station Meteorologist Recorded Info. Emergency Only	800/992-7433 352/371-9702 727/536-6290 — Shift Supv. 727/536-6980 — 727/539-7491 (M-F only) 813/645-2323 813/645-2506 813/645-4111 (24 hrs.)	
SEISMIC: U.S. GEOLOGICAL SURVEY (Menlo Park, CA) (Golden, CO) UNIVERSITY OF FLORIDA DEPT. OF GEOLOGY	Dr. Douglas Smith	650/853-8300 303/273-8500 352/392-6766 (Office) 352/392-2231 (Dept.)	
PARSONS POWER (formerly Gilbert Associates, Inc.)			
PARSONS POWER	Robert E. Vaughn	610/855-2000, X2061 or 610/855-2061 (direct)	EOF Accident Assessment Coordinator



RADIOLOGICAL EMERGENCY PLANNING DEPARTMENT PROCEDURE

REP-02 Rev. 71

Date 07/18/00

Page 29 of 34

TITLE: ACTIVATION AND NOTIFICATION OF THE
EMERGENCY OPERATIONS FACILITY ORGANIZATION

- ATTACHMENT 3 -
OFF-SITE ORGANIZATIONS COMMUNICATIONS CONTACTS

(Page 10 of 10)

SERVICE	NAME/CONTACT	TELEPHONE	FPC CONTACT(S)
STATE AGENCIES			
DEPT. OF HEALTH (DOH), BUREAU OF RADIATION CONTROL (Orlando, FL)	Harlan W. Keaton	407/297-2095 (W) 941/439-2686 (H)	Assistant EOF Director
	Jearold C. Eakins	407/297-2095 (W) 407/880-2697 (H)	
	John A. Williamson	407/297-2095 (W) 407/389-0213 (H)	
DEPT. OF HEALTH (DOH), BUREAU OF RADIATION CONTROL (Cont'd) (Orlando, FL)	DOH Mobile Lab (MERL) at EOF DOH Mobile Lab (MERL) at FPC Substation	352/795-9509 352/795-1716	EOF Director
STATE WARNING POINT (Tallahassee, FL)	State Duty Warning Officer	850/413-9911 800/320-0519 850/413-9910 850/488-7841 (FAX)	
UTILITIES			
FLORIDA POWER & LIGHT CO. (System Power Coordinator)	System Operator	305/442-5744 (24 hr. service) 305/442-5742 (interchange desk) 305/442-5743 (generation desk)	Assistant EOF Director
FLORIDA POWER CORPORATION (CR-3 Control Room)	Nuclear Shift Manager (NSM)	352/795-6958 877/563-4940 352/422-8898 (C)	
NUCLEAR ENERGY INSTITUTE (NEI)		202/739-8000 202/785-4019 (FAX)	Corporate Communications Director
UNITED TELEPHONE OF FLORIDA	Bonnie K. Stout	352/368-8706 For emergencies, after 5 p.m., weekends, and holidays, dial 611 (repair service).	Assistant EOF Director

Date: _____

- ATTACHMENT 4 -

(Page 1 of 5)

EOF ACCOUNTABILITY/FITNESS-FOR-DUTY (FFD) LOG FOR FPC PERSONNEL								
PRINTED NAME	EMERGENCY TITLE	BADGE NO.	TIME IN	TIME OUT	FFD*		SIGNATURE	AUTH.**
					YES	NO		
Anna, J. M.	Administrative Manager							
Armstrong, R. W.	EOF Setup/Status Boards							
Austin, J. G.	EOF Facility Manager							
Austin, T. V.	EOF Accident Assess. Engr.							
Bagwell, B. R.	EOF Accountability Rep.							
Balliet, S. K.	EOF Accident Assess. Engr.							
Bernhoft, S. L.	EOF Director							
Bourscheid, D. J.	FPC Field Team Liaison							
Bright, R. M.	FPC State EOC Rep.							
Brown, D. A.	Medical Representative							
Brown, S. D.	EOF Dose Assessment Member							
Cadwell, G. H.	EOF Dose Assessment Member							
Cardinali, R. G.	EOF Setup/Status Boards							
Casada, M. R.	FPC Citrus Co. EOC Rep.							
Cecilia, L. V.	EOF State & Local Govt. Liaison							
Christie, G. A.	Materials Manager							
Collins, M. E.	FPC Levy Co. EOC Rep.							

* An emergency responder is considered "fit-for-duty" if they have not consumed any alcohol during the pre-duty 5 hour abstinence period. If YES (fit-for-duty), access may be granted. If NO (not fit-for-duty), the EOF Accountability Representative should notify the EOF Director and instruct the individual to report to the area designated by the EOF Director and stand by for further instructions.

** The EOF Director may approve an individual who has not met the 5 hour abstinence period requirement to staff an emergency position provided a determination of fitness-for-duty is made. This may be accomplished by breath analysis. In addition, a responsible supervisor shall interview the employee to further ascertain fitness-for-duty. If the individual is fit-for-duty, no further authorization is required.

Date: _____

- ATTACHMENT 4 (Cont'd) -

(Page 2 of 5)

EOF ACCOUNTABILITY/FITNESS-FOR-DUTY (FFD) LOG FOR FPC PERSONNEL								
PRINTED NAME	EMERGENCY TITLE	BADGE NO.	TIME IN	TIME OUT	FFD*		SIGNATURE	AUTH.**
					YES	NO		
Cowan, J. P.	Vice President, Nucl. Ops.							
Crosten, C. M.	EOF Acc. Assess. Ops. Rep.							
Dearing, C. R.	EOF Accountability Rep.							
Elam, J. C.	EOF Setup/Status Boards							
Endsley, J. S.	EOF Accident Assess. Engr.							
Ezzell, P. F.	EOF Dose Assessment Member							
Forbrick, M. N.	Communications Director							
Frando, F.	EOF State & Local Govt. Liaison							
Fugate, D.	Medical Representative							
Fuller, M. J.	State and County EOC Communicator							
Gallian, M.	EOF Acc. Assess. Ops. Rep.							
Garry, S. M.	Corporate Health Physicist							
Gilbert, J. D.	EOF Dose Assessment Member							
Grazio, R. E.	EOF Director							
Grider, M. A.	EOF Setup/Status Boards							
Gwaltney, W. E.	EOF Setup/Status Boards							
Hampton, K. E.	EOF Communicator							
Hardin, L. W.	EOF Facility Manager							
Harrelson, D. H.	Corporate Security Spec.							

Date: _____

- ATTACHMENT 4 (Cont'd) -

(Page 3 of 5)

EOF ACCOUNTABILITY/FITNESS-FOR-DUTY (FFD) LOG FOR FPC PERSONNEL								
PRINTED NAME	EMERGENCY TITLE	BADGE NO.	TIME IN	TIME OUT	FFD*		SIGNATURE	AUTH.**
					YES	NO		
Harris, L. W.	EOF Risk Analysis Rep.							
Harris, M. S.	Communications Director							
Hebb, G. P.	EOF Accident Assess. Coord.							
Hensley, L. W.	EOF Setup/Status Boards							
Holmes, M. P.	EOF Acc. Assess. Ops. Rep.							
Hooper, N. J.	Administrative Manager							
Infanger, P. E.	EOF State & Local Govt. Liaison							
Iwachow, R.	EOF Accident Assess. Engr.							
Janka, R. A.	Communications Director							
Johnson, S. G.	EOF Director							
Kazemfar, A.	Corporate Health Physicist							
Kennedy, A. T.	EOF Acc. Assess. Ops. Rep.							
Komara, B. P.	State and County EOC Communicator							
Lancaster, K. F.	Asst. EOF Director							
Linhart, K. G.	Medical Representative							
Linton, R. L.	Asst. EOF Director							
Mansfield, S. D.	FPC Field Team Liaison							
McCollough, D. A.	Corporate Health Physicist							
McDougal, L. R.	FPC Levy Co. EOC Rep.							

Date: _____

- ATTACHMENT 4 (Cont'd) -

(Page 4 of 5)

EOF ACCOUNTABILITY/FITNESS-FOR-DUTY (FFD) LOG FOR FPC PERSONNEL								
PRINTED NAME	EMERGENCY TITLE	BADGE NO.	TIME IN	TIME OUT	FFD*		SIGNATURE	AUTH.**
					YES	NO		
McLaughlin, R. L.	EOF NRC Liaison							
Miskiewicz, D. N.	EOF Risk Analysis Rep.							
Oates, H. B.	EOF Tech. Support Director							
O'Brian, J. L.	EOF Accident Assess. Engr.							
Owen, J. P.	EOF Communicator							
Payne, J. H.	EOF Dose Assessment Member							
Peterson, P. M.	EOF NRC Liaison							
Petrowsky, A.	EOF Tech. Support Director							
Pike, W. J.	EOF NRC Liaison							
Plummer, F. A.	EOF Accountability Rep.							
Ranalli, J. A.	EOF Tech. Support Director							
Riley, M. A.	Administrative Manager							
Roberts, H. D.	EOF Communicator							
Roe, S. J.	EOF Accident Assess. Engr.							
Rogers, R. L.	EOF Setup/Status Boards							
Ruether, M. I.	Materials Manager							
Savage, D. W.	EOF Setup/Status Boards							
Slottke, R. J.	Materials Manager							
Smith, D. E.	EOF Acc. Assess. Ops. Rep.							
Smith, J. G.	EOF Accident Assess. Coord.							

Date: _____

- ATTACHMENT 4 (Cont'd) -

(Page 5 of 5)

EOF ACCOUNTABILITY/FITNESS-FOR-DUTY (FFD) LOG FOR FPC PERSONNEL								
PRINTED NAME	EMERGENCY TITLE	BADGE NO.	TIME IN	TIME OUT	FFD*		SIGNATURE	AUTH.**
					YES	NO		
Snow, L. G.	EOF Facility Manager							
Springer, J. L.	EOF Accident Assess. Coord.							
Surber, R. G.	State and County EOC Communicator							
Sweeney, G. J.	EOF Setup/Status Boards							
Taylor, T. H.	EOF Directo							
Trump, M. A.	Asst. EOF Director							
Walters, C. L.	EOF Accountability Rep.							
Watson, D. D.	Corporate Security Spec.							
Weaver, J. R.	EOF Risk Analysis Rep.							
Widell, R. C.	Asst. EOF Director							
Wilson, G. W.	FPC Citrus Co. EOC Rep.							
Wilson, K. R.	FPC State EOC Rep.							
Williams, T. E.	EOF Tech. Support Director							
Wood, D. J.	EOF Facility Manager							



RADIOLOGICAL EMERGENCY PLANNING DEPARTMENT PROCEDURE

REP-02 Rev. 71

Date 07/18/00

Page 1 of 34

ACTIVATION AND NOTIFICATION OF THE EMERGENCY OPERATIONS FACILITY ORGANIZATION

REQUIRED APPROVALS

A handwritten signature in black ink, appearing to read "John D. Stephens".

Manager, Radiological Emergency Planning

7/13/00
Date

A handwritten signature in black ink, appearing to read "John R. ...".

Vice President, Nuclear Operations

7/17/2000
Date

TITLE: ACTIVATION AND NOTIFICATION OF THE
EMERGENCY OPERATIONS FACILITY ORGANIZATION

1.0 PURPOSE

This procedure provides instructions for the activation of the EOF Organization in response to an emergency at CR-3.

2.0 SCOPE

2.1 This procedure describes the activation of the EOF Organization and provides initial directions for assembly of emergency response personnel. It contains telephone directories for the emergency response personnel and facilities necessary for effective implementation of the RERP, and provides instructions for notifying response personnel of changes in emergency classification or of the need for a shift change.

2.2 A Safety Assessment was performed for this procedure. A determination was made that this procedure is outside the scope of 10 CFR 50.59.

3.0 APPLICABLE REFERENCE DOCUMENTS

FPC CR-3 "Radiological Emergency Response Plan"

4.0 DEFINITIONS AND ABBREVIATIONS

Terms used in this procedure are consistent with the definitions and abbreviations provided in the RERP.

4.1 DEFINITIONS

4.1.1 Activation:

To provide notification to emergency response personnel of the need to respond to the EOF for staffing and operation.

4.1.2 Operational:

The minimum functions and communication links are established and required equipment is in proper working order per the EOF checklist in REP-03.



RADIOLOGICAL EMERGENCY PLANNING DEPARTMENT PROCEDURE

REP-02 Rev. 71

Date 07/18/00

Page 3 of 34

TITLE: ACTIVATION AND NOTIFICATION OF THE
EMERGENCY OPERATIONS FACILITY ORGANIZATION

4.2 ABBREVIATIONS

CR-3 - Crystal River Unit 3
ENC - Emergency News Center
EOF - Emergency Operations Facility
EPC - Emergency Planning Coordinator
FPC - Florida Power Corporation
OSC - Operational Support Center
RERP - Radiological Emergency Response Plan
TSC - Technical Support Center

5.0 RESPONSIBILITIES AND ACTIONS

5.1 INITIAL ACTIVATION

The EOF Director is notified of any emergency that results in implementation of the RERP. In the event that the emergency is classified as a SITE AREA EMERGENCY or GENERAL EMERGENCY, the EOF Director will activate the EOF Organization. Based on assessments between the EOF Director and the Emergency Coordinator, the initial level of support required will be determined. The EOF Director will then notify those EOF members necessary for further assessment and response.

5.2 LEVEL OF ACTIVATION

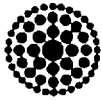
The level of involvement of the various members of the EOF Organization will depend strongly on the nature of the emergency and the actions required to respond and recover. Assessment by the EOF Director, therefore, is appropriate before notifying and assembling the complete EOF Organization. The following describes the levels of involvement associated with each of the emergency classes:

a. Unusual Event

The EOF Director is notified and will notify EOF Staff as the event warrants.

b. Alert

The Emergency Coordinator will notify the EOF Director, who will notify the EOF Facility Manager; the Assistant EOF Director; the EOF Technical Support Director; the Communications Director; and



RADIOLOGICAL EMERGENCY PLANNING DEPARTMENT PROCEDURE

TITLE: ACTIVATION AND NOTIFICATION OF THE
EMERGENCY OPERATIONS FACILITY ORGANIZATION

the Vice President, Nuclear Operations. This notification will alert these individuals to stand by for further information, or may include a request for specific support.

The EOF Technical Support Director will notify the Corporate Health Physicist. The Corporate Health Physicist will call the EOF Dose Assessment Team members and activate at an ALERT.

The Vice President, Nuclear Operations will notify the President and Chief Executive Officer.

The EOF Director may also activate, at his discretion, other portions of the EOF Organization deemed necessary. Nuclear Security should be called to activate the EOF group pagers.

c. Site Area Emergency

EOF members will be notified by telephone and/or pager of the emergency, and are required to report to their functional locations as specified in this procedure.

d. General Emergency

EOF members will be notified by telephone and/or pager of the emergency, and are required to report to their functional locations as specified in this procedure.

5.3 EOF NOTIFICATIONS

5.3.1 Notification Network

In order to expedite notifications, the EOF Organization functions as a notification network. The notification network is designed to provide notification of RERP activation, instructions for staffing the emergency facilities, notification of changes in emergency classification, and relay of shift change instructions. Figure 1 illustrates this network. Attachment 1 provides a directory of emergency response personnel, including the emergency positions, primary and alternate designees, and their respective telephone numbers with information arranged for use as the notification network. Each emergency position/individual responsible for implementing the network is listed at the top of a page, followed by the emergency positions/individuals he/she is responsible for contacting. If neither the primary nor the alternate(s) can be reached, the EOF Director is to be notified to designate an individual to fill the position until the primary or alternate can be located.



RADIOLOGICAL EMERGENCY PLANNING DEPARTMENT PROCEDURE

REP-02 Rev. 71

Date 07/18/00

Page 5 of 34

**TITLE: ACTIVATION AND NOTIFICATION OF THE
EMERGENCY OPERATIONS FACILITY ORGANIZATION**

During normal working hours, notification of EOF members located at CR-3 may be via pagers and/or the plant public address system. If a SITE AREA EMERGENCY is declared, EOF members should report to the EOF immediately, regardless of whether he/she is the primary or alternate for that position. Before departing for the EOF, an individual in the EOF member's department should be notified in the event he/she is called while enroute. The EOF Director will determine final staffing as needed.

5.3.2 Special Considerations

The Corporate Security Specialist is not required to report directly to the EOF since he/she must maintain the mobility necessary for fulfillment of responsibilities. However, the Corporate Security Specialist must notify the EOF Director upon assuming his/her emergency role.

5.4 NOTIFICATION OF CHANGE IN EMERGENCY CLASSIFICATION

After initially notifying EOF members that an emergency situation exists at CR-3, subsequent events may result in a reclassification of the emergency. Depending on the initial classification of the emergency and whether the change indicates a more or less serious emergency situation, varying changes in support may be appropriate. To assure EOF members are informed of changes in emergency classification in an expeditious manner, the network utilized for notification described above shall also provide the basis for notification of changes in emergency class.

Upon notification by the Emergency Coordinator that a change in emergency classification has occurred, the EOF Director shall initiate notification of the EOF Organization. This may be accomplished by announcement at the EOF, supplemented by telephone contacts; however, each individual position responsible for initial notifications per the network described in Section 5.3 above shall assure that each designated contact of the network is informed of the classification change. Each EOF member shall then respond as appropriate to the new classification or per directions provided through the EOF Director.

5.5 SHIFT CHANGE

Should the emergency situation appear to require long-term response and support, the EOF Director shall assess the need for providing personnel assignments for continuing support. If a shift change is required, they shall identify the emergency response positions necessary to maintain adequate response. Each individual filling those positions shall then contact their alternate to report to the emergency response facility. In the event a suitable alternate cannot be located in a timely manner, then that member shall immediately inform his respective director to locate or identify a suitable replacement.



RADIOLOGICAL EMERGENCY PLANNING DEPARTMENT PROCEDURE

REP-02 Rev. 71

Date 07/18/00

Page 6 of 34

TITLE:

**ACTIVATION AND NOTIFICATION OF THE
EMERGENCY OPERATIONS FACILITY ORGANIZATION**

Once the relief alternate arrives at the designated location, there shall be a briefing by the individual that has filled the position prior to the transferring of responsibilities. The briefing is to be as complete as possible and should entail, as a minimum, the scenario of the emergency, the impact on the emergency position, the contacts made, the response anticipated from inquiries made, the actions exercised, the justification for these actions, and conveyance of all forms and logs generated.

5.6 NOTIFICATION DIRECTORIES

5.6.1 As an integral part of this procedure, directories are provided for EOF personnel, support facilities, support organizations, and off-site organizations:

- a. Attachment 1 provides a directory of EOF personnel and office and home telephone numbers for notification purposes.
- b. Attachment 2 provides a directory of emergency response facilities and telephone numbers.
- c. Attachment 3 provides a directory of off-site technical organizations. The designated FPC contact is also provided.

5.6.2 Each EOF member should inform the EPC within one week of known changes in personnel when such changes affect the EOF personnel and/or telephone numbers.

5.6.3 The EPC shall be informed of changes to the listings for off-site organizations or miscellaneous support contacts.

5.6.4 These changes will be made and distributed by the EPC to holders of this procedure.

5.6.5 There shall be a quarterly review and update of the telephone numbers listed in the attachments of this procedure.

6.0 INTERPRETATION CONTACT

The responsibility for the development and maintenance of this procedure rests with the EPC. The EPC shall be contacted regarding any clarification or interpretation of requirements of this procedure.



RADIOLOGICAL EMERGENCY PLANNING DEPARTMENT PROCEDURE

**TITLE: ACTIVATION AND NOTIFICATION OF THE
EMERGENCY OPERATIONS FACILITY ORGANIZATION**

7.0 REVISION HISTORY

Rev. 0	Date: <u>07/31/81</u>	Original Release (NSSD-24)
Rev. 0	Date: <u>10/30/81</u>	General revisions and change of designation to NL-18.
Rev. 1	Date: <u>02/10/82</u>	General Revisions
Rev. 0	Date: <u>08/30/82</u>	General revisions and change of designation to REP-02.
Rev. 1	Date: <u>12/31/82</u>	General Revisions
Rev. 2	Date: <u>05/11/83</u>	General Revisions
Rev. 3	Date: <u>09/30/83</u>	General Revisions
Rev. 4	Date: <u>02/29/84</u>	Completeness
Rev. 5	Date: <u>06/04/84</u>	Attachment 1 formatted for clarity and to reflect changes to CESO.
Rev. 6	Date: <u>08/06/84</u>	General Revisions
Rev. 7	Date: <u>10/22/84</u>	General Revisions
Rev. 8	Date: <u>01/18/85</u>	General Revisions
Rev. 9	Date: <u>04/15/85</u>	General revisions and change to notification network.
Rev. 10	Date: <u>07/15/85</u>	General Revisions
Rev. 11	Date: <u>10/15/85</u>	General Revisions
Rev. 12	Date: <u>01/31/86</u>	General Revisions
Rev. 13	Date: <u>05/16/86</u>	General Revisions
Rev. 14	Date: <u>08/11/86</u>	General Revisions
Rev. 15	Date: <u>10/15/86</u>	General Revisions
Rev. 16	Date: <u>01/16/87</u>	General Revisions
Rev. 17	Date: <u>04/16/87</u>	General Revisions
Rev. 18	Date: <u>07/20/87</u>	General Revisions
Rev. 19	Date: <u>10/23/87</u>	General Revisions
Rev. 20	Date: <u>11/30/87</u>	Corporate Command Center (CCC) Reorganization
Rev. 21	Date: <u>01/29/88</u>	General Revisions
Rev. 22	Date: <u>04/29/88</u>	General Revisions
Rev. 23	Date: <u>07/22/88</u>	General Revisions
Rev. 24	Date: <u>10/21/88</u>	General Revisions
Rev. 25	Date: <u>01/30/89</u>	General Revisions
Rev. 26	Date: <u>04/28/89</u>	General Revisions
Rev. 27	Date: <u>07/28/89</u>	General Revisions
Rev. 28	Date: <u>10/27/89</u>	General Revisions
Rev. 29	Date: <u>02/28/90</u>	General Revisions
Rev. 30	Date: <u>05/11/90</u>	General Revisions
Rev. 31	Date: <u>08/08/90</u>	General Revisions
Rev. 32	Date: <u>10/31/90</u>	General Revisions
Rev. 33	Date: <u>01/31/91</u>	General Revisions
Rev. 34	Date: <u>04/30/91</u>	General Revisions
Rev. 35	Date: <u>07/19/91</u>	General Revisions
Rev. 36	Date: <u>11/13/91</u>	General Revisions
Rev. 37	Date: <u>02/06/92</u>	General Revisions
Rev. 38	Date: <u>04/30/92</u>	General Revisions
Rev. 39	Date: <u>07/28/92</u>	CCC Deletion
Rev. 40	Date: <u>10/22/92</u>	General Revisions
Rev. 41	Date: <u>01/29/93</u>	General Revisions
Rev. 42	Date: <u>04/16/93</u>	General Revisions
Rev. 43	Date: <u>07/23/93</u>	General Revisions



RADIOLOGICAL EMERGENCY PLANNING DEPARTMENT PROCEDURE

REP-02 Rev. 71

Date 07/18/00

Page 8 of 34

TITLE:

**ACTIVATION AND NOTIFICATION OF THE
EMERGENCY OPERATIONS FACILITY ORGANIZATION**

Rev. 44	Date: <u>10/26/93</u>	General Revisions
Rev. 45	Date: <u>01/14/94</u>	General Revisions
Rev. 46	Date: <u>04/15/94</u>	General Revisions
Rev. 47	Date: <u>07/22/94</u>	General Revisions
Rev. 48	Date: <u>10/18/94</u>	General Revisions
Rev. 49	Date: <u>01/27/95</u>	General Revisions
Rev. 50	Date: <u>05/05/95</u>	Editorial Revisions
Rev. 51	Date: <u>07/21/95</u>	Editorial Revisions
Rev. 52	Date: <u>10/24/95</u>	Editorial revisions resulting from Fourth Quarter 1995 review of notification rosters.
Rev. 53	Date: <u>02/16/96</u>	Editorial revisions for First Quarter 1996.
Rev. 54	Date: <u>04/19/96</u>	Editorial revisions for Second Quarter 1996.
Rev. 55	Date: <u>07/19/96</u>	Editorial revisions for Third Quarter 1996.
Rev. 56	Date: <u>10/07/96</u>	Editorial revisions for Fourth Quarter 1996. Added EOF Accident Assessment Team.
Rev. 57	Date: <u>02/28/97</u>	Editorial revisions for First Quarter 1997. Added EOF State and Local Government Liaison Call List and Attachment 4, "EOF Accountability/Fitness-for-Duty (FFD) Log for FPC Personnel."
Rev. 58	Date: <u>05/29/97</u>	Editorial revisions for Second Quarter 1997.
Rev. 59	Date: <u>08/19/97</u>	Editorial revisions for Third Quarter 1997. Added statement that Safety Assessment was performed.
Rev. 60	Date: <u>11/03/97</u>	Editorial revisions for Fourth Quarter 1997.
Rev. 61	Date: <u>02/12/98</u>	First Quarter 1998 Update
Rev. 62	Date: <u>04/27/98</u>	Second Quarter 1998 Update
Rev. 63	Date: <u>07/28/98</u>	Third Quarter 1998 Update
Rev. 64	Date: <u>10/08/98</u>	Fourth Quarter 1998 Update
Rev. 65	Date: <u>01/26/99</u>	First Quarter 1999 Update
Rev. 66	Date: <u>04/27/99</u>	Second Quarter 1999 Update
Rev. 67	Date: <u>07/09/99</u>	Third Quarter 1999 Update
Rev. 68	Date: <u>09/15/99</u>	Fourth Quarter 1999 Update
Rev. 69	Date: <u>01/17/00</u>	First Quarter 2000 Update
Rev. 70	Date: <u>04/18/00</u>	Second Quarter 2000 Update
Rev. 71	Date: <u>07/18/00</u>	Third Quarter 2000 Update



RADIOLOGICAL EMERGENCY PLANNING DEPARTMENT PROCEDURE

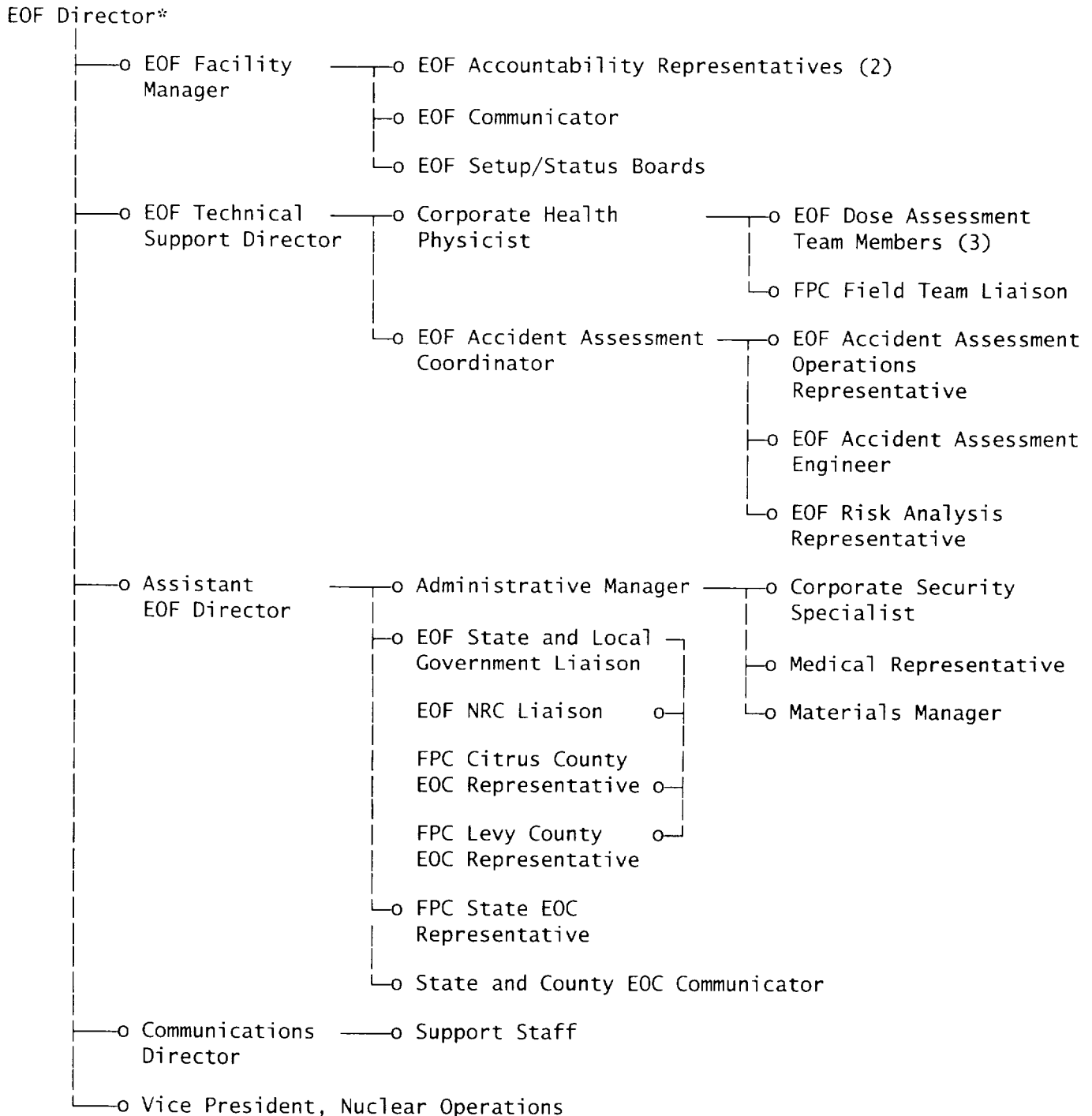
REP-02 Rev. 71

Date 07/18/00

Page 9 of 34

TITLE: ACTIVATION AND NOTIFICATION OF THE
EMERGENCY OPERATIONS FACILITY ORGANIZATION

- FIGURE 1 -
EOF NOTIFICATION NETWORK



* Nuclear Security must be called to activate the EOF group pagers.



RADIOLOGICAL EMERGENCY PLANNING DEPARTMENT PROCEDURE

REP-02 Rev. 71

Date 07/18/00

Page 10 of 34

TITLE:

ACTIVATION AND NOTIFICATION OF THE
EMERGENCY OPERATIONS FACILITY ORGANIZATION- ATTACHMENT 1 -
EOF PERSONNEL DIRECTORY AND NOTIFICATION NETWORK

(Page 1 of 9)

EOF DIRECTOR CALL LIST

	Name	Office Number	Home Number
Primary:	R. E. Grazio	352/563-4756 M/W 240-4756	352/527-8679 275-0389 (P)* 352/422-8418 (C)
Alternate:	T. H. Taylor	352/563-4338 M/W 240-3155	352/564-4200 888/803-5917 (P) 352/422-8456 (C)
Alternate:	S. L. Bernhoft	352/563-4566 M/W 240-3300	352/341-0003 274-0077 (P)* 352/422-8416 (C)
Alternate:	S. G. Johnson	352/563-4384 M/W 240-3200	352/489-0499 275-3627 (P)* 352/422-8445 (C)

P = Pager
C = Cellular Phone

Positions enclosed by a box are required to declare the EOF operational.
Contact only one individual per emergency position. Check appropriate box for individual contacted.

Priority	Emergency Title	Contacted	Name	Office Number	Home Number
1	EOF Facility Manager	<input type="checkbox"/> Primary	L. G. Snow	352/563-4670 M/W 240-6169	352/563-5094 274-1159 (P)*
		<input type="checkbox"/> Alternate	D. J. Wood	352/563-4672 M/W 240-6106	352/746-0706 274-1947 (P)*
		<input type="checkbox"/> Alternate	L. W. Hardin	352/563-4591 M/W 240-6114	352/527-3662 274-1156 (P)*
		<input type="checkbox"/> Alternate	J. G. Austin	352/795-0504 M/W 240-6317	352/382-5413 275-0166 (P)*
2	Assistant EOF Director	<input type="checkbox"/> Primary	K. F. Lancaster	352/422-8931 M/W 240-8931	352/344-0855 274-8484 (P)*
		<input type="checkbox"/> Alternate	R. C. Widell	352/795-6486 M/W 240-3708	352/746-0646 274-0385 (P)* 352/422-8856 (C)
		<input type="checkbox"/> Alternate	M. A. Trump	352/563-4974 M/W 240-6174	352/527-8840 274-0481 (P)* 352/422-8473 (C)
		<input type="checkbox"/> Alternate	R. L. Linton	352/563-4680 M/W 240-6258	352/795-5512

* Access pager by dialing *900 from FPC internally OR 1-800-241-4653, then follow instructions.



RADIOLOGICAL EMERGENCY PLANNING DEPARTMENT PROCEDURE

REP-02 Rev. 71

Date 07/18/00

Page 11 of 34

TITLE: ACTIVATION AND NOTIFICATION OF THE
EMERGENCY OPERATIONS FACILITY ORGANIZATION

- ATTACHMENT 1 -
EOF PERSONNEL DIRECTORY AND NOTIFICATION NETWORK

(Page 2 of 9)

EOF DIRECTOR CALL LIST
(Continued)

	<u>Name</u>	<u>Office Number</u>	<u>Home Number</u>
Primary:	R. E. Grazio	352/563-4756 M/W 240-4756	352/527-8679 275-0389 (P)* 352/422-8418 (C)
Alternate:	T. H. Taylor	352/563-4338 M/W 240-3155	352/564-4200 888/803-5917 (P) 352/422-8456 (C)
Alternate:	S. L. Bernhoft	352/563-4566 M/W 240-3300	352/341-0003 274-0077 (P)* 352/422-8416 (C)
Alternate:	S. G. Johnson	352/563-4384 M/W 240-3200	352/489-0499 275-3627 (P)* 352/422-8445 (C)

P = Pager
C = Cellular Phone

Positions enclosed by a box are required to declare the EOF operational.
Contact only one individual per emergency position. Check appropriate box for individual contacted.

<u>Priority</u>	<u>Emergency Title</u>	<u>Contacted</u>	<u>Name</u>	<u>Office Number</u>	<u>Home Number</u>
3	EOF Technical Support Director	<input type="checkbox"/> Primary	J. A. Ranalli	352/563-4984 M/W 240-3284	352/597-7610 275-3704 (P)* 352/422-8893 (C)
		<input type="checkbox"/> Alternate	A. Petrowsky	352/563-4576 M/W 240-3576	352/382-3482 274-3944 (P)* 352/422-8428 (C)
		<input type="checkbox"/> Alternate	T. E. Williams	352/563-4356 M/W 240-3886	352/795-9097 274-8814 (P)* 352/422-8513 (C)
		<input type="checkbox"/> Alternate	H. B. Oates	352/563-4789 M/W 240-3777	352/382-4652 275-3675 (P)* 352/422-8414 (C)
4	Communications Director	<input type="checkbox"/> Primary	M. S. Harris	352/563-4489 M/W 240-4489	352/527-9372 274-3388 (P)* 888/760-7104 (P) 352/422-8602 (C)
		<input type="checkbox"/> Alternate	M. N. Forbrick	727/820-5023 M/W 230-5023	727/823-9693 800/940-7076 (P) 727/403-5516 (C)
		<input type="checkbox"/> Alternate	R. A. Janka	407/475-2400 M/W 280-2400	407/659-3784 or 727-866-6641 888/939-3410 (P) 407/257-3724 (C)
5	Vice President, Nuclear Operations	<input type="checkbox"/>	J. P. Cowan	352/563-4594 M/W 240-3104	352/795-0964 352/422-8410 (C)

* Access pager by dialing *900 from FPC internally OR 1-800-241-4653, then follow instructions.



RADIOLOGICAL EMERGENCY PLANNING DEPARTMENT PROCEDURE

REP-02 Rev. 71

Date 07/18/00

Page 12 of 34

TITLE:

ACTIVATION AND NOTIFICATION OF THE
EMERGENCY OPERATIONS FACILITY ORGANIZATION- ATTACHMENT 1 -
EOF PERSONNEL DIRECTORY AND NOTIFICATION NETWORK

(Page 3 of 9)

EOF FACILITY MANAGER CALL LIST

	Name	Office Number	Home Number
Primary:	L. G. Snow	352/563-4670 M/W 240-6169	352/563-5094 274-1159 (P)*
Alternate:	D. J. Wood	352/563-4672 M/W 240-6106	352/746-0706 274-1947 (P)*
Alternate:	L. W. Hardin	352/563-4591 M/W 240-6114	352/527-3662 274-1156 (P)*
Alternate:	J. G. Austin	352/795-0504 M/W 240-6317	352/382-5413 275-0166 (P)*

P = Pager
C = Cellular Phone

Contact only one individual per emergency position. Check appropriate box for individual contacted.

Priority	Emergency Title	Contacted	Name	Office Number	Home Number
1	EOF Accountability Representative (Contact a minimum of two individuals.)	<input type="checkbox"/> Primary	F. A. Plummer	352/795-0504 M/W 240-6363	352/567-7067
		<input type="checkbox"/> Alternate	C. R. Dearing	352/795-0504 M/W 240-6111	352/746-0151
		<input type="checkbox"/> Alternate	C. L. Walters	352/795-0504 M/W 240-6109	352/489-1235
		<input type="checkbox"/> Alternate	B. R. Bagwell	352/795-0504 M/W 240-6222	352/563-2598
2	EOF Communicator	<input type="checkbox"/> Primary	J. P. Owen	352/795-0504 M/W 240-6190	352/795-2539 or 795-0344
		<input type="checkbox"/> Alternate	K. E. Hampton	352/795-0504 M/W 240-6282	352/382-5034
		<input type="checkbox"/> Alternate	H. D. Roberts	352/795-0504 M/W 240-6128	352/628-4042
3	EOF Setup/Status Boards** (Notify all positions for initial setup.)	<input type="checkbox"/> Primary	R. G. Cardinali	352/795-0504 M/W 240-6185	352/726-5267
		<input type="checkbox"/> Alternate	J. C. Elam	352/795-0504 M/W 240-6134	352/795-4784
		<input type="checkbox"/> Alternate	W. E. Gwaltney	352/795-0504 M/W 240-6118	352/746-0359
		<input type="checkbox"/> Alternate	D. W. Savage	352/795-0504 M/W 240-6289	352/489-5043
		<input type="checkbox"/> Alternate	R. L. Rogers	352/795-0504 M/W 240-6342	352/563-5563 275-3381 (P)*
		<input type="checkbox"/> Alternate	L. W. Hensley	352/795-0504 M/W 240-6186	352/726-2302
		<input type="checkbox"/> Alternate	M. A. Grider	352/795-0504 M/W 240-6119	352/795-1254
		<input type="checkbox"/> Alternate	G. J. Sweeney	352/795-0504 M/W 240-6267	352/527-2380
		<input type="checkbox"/> Alternate	R. W. Armstrong	352/795-0504 M/W 240-6118	352/726-9073 274-8448 (P)*

*Access pager by dialing *900 from FPC internally OR 1-800-241-4653, then follow instructions.

**First responsibility is the setup of the EOF. After setup is complete, the EOF Facility Manager will assign personnel for updating the status boards.



RADIOLOGICAL EMERGENCY PLANNING DEPARTMENT PROCEDURE

REP-02 Rev. 71

Date 07/18/00

Page 13 of 34

TITLE:

ACTIVATION AND NOTIFICATION OF THE
EMERGENCY OPERATIONS FACILITY ORGANIZATION- ATTACHMENT 1 -
EOF PERSONNEL DIRECTORY AND NOTIFICATION NETWORK

(Page 4 of 9)

ASSISTANT EOF DIRECTOR CALL LIST

	Name	Office Number	Home Number
Primary:	K. F. Lancaster	352/422-8931 M/W 240-8931	352/344-0855 274-8484 (P)*
Alternate:	R. C. Widell	352/795-6486 M/W 240-3708	352/746-0646 274-0385 (P)* 352/422-8856 (C)
Alternate:	M. A. Trump	352/563-4974 M/W 240-6174	352/527-8840 274-0481 (P)* 352/422-8473 (C)
Alternate:	R. L. Linton	352/563-4680 M/W 240-6258	352/795-5512

P = Pager
C = Cellular Phone

Contact only one individual per emergency position unless otherwise indicated. Check appropriate box for individual contacted.

Priority	Emergency Title	Contacted	Name	Office Number	Home Number
1	Administrative Manager	<input type="checkbox"/> Primary	J. M. Anna	352/563-4480 M/W 240-4480	352/795-0067
		<input type="checkbox"/> Alternate	N. J. Hooper	352/422-8431 M/W 240-8431	352/795-9568 274-1212 (P)*
		<input type="checkbox"/> Alternate	M. A. Riley	352/563-4848 M/W 240-4848	352/489-5875
2	EOF State and Local Government Liaison	<input type="checkbox"/> Primary	F. Frando	352/563-4795 M/W 240-3045	352/465-7343
		<input type="checkbox"/> Alternate	L. V. Cecilia	352/563-4546 M/W 240-3190	352/563-0046 275-3679 (P)*
		<input type="checkbox"/> Alternate	P. E. Infanger	352/563-4796 M/W 240-3166	352/873-4863 274-4935 (P)*
3	FPC State EOC Representative	<input type="checkbox"/> Primary	R. M. Bright	352/563-4771 M/W 240-3319	352/447-4708 274-8887 (P)*
		<input type="checkbox"/> Alternate	K. R. Wilson	352/795-6486 M/W 240-8933	352/332-8709 352/422-8933 (C)
4	State and County EOC Communicator	<input type="checkbox"/> Primary	R. G. Surber	352/795-0504 M/W 240-6326	352/795-8014
		<input type="checkbox"/> Alternate	B. P. Komara	352/563-4679 M/W 240-6140	352/795-3959 274-7541 (P)*
		<input type="checkbox"/> Alternate	M. J. Fuller	352/795-0504 M/W 240-6184	352/527-4510
5	INPO Duty Officer			800/321-0614	

* Access pager by dialing *900 from FPC internally OR 1-800-241-4653, then follow instructions.



RADIOLOGICAL EMERGENCY PLANNING DEPARTMENT PROCEDURE

REP-02 Rev. 71

Date 07/18/00

Page 14 of 34

TITLE: ACTIVATION AND NOTIFICATION OF THE
EMERGENCY OPERATIONS FACILITY ORGANIZATION

- ATTACHMENT 1 -
EOF PERSONNEL DIRECTORY AND NOTIFICATION NETWORK

(Page 5 of 9)

EOF TECHNICAL SUPPORT DIRECTOR CALL LIST

	<u>Name</u>	<u>Office Number</u>	<u>Home Number</u>
Primary:	J. A. Ranalli	352/563-4984 M/W 240-3284	352/597-7610 275-3704 (P)* 352/422-8893 (C)
Alternate:	A. Petrowsky	352/563-4576 M/W 240-3576	352/382-3482 274-3944 (P)* 352/422-8428 (C)
Alternate:	T. E. Williams	352/563-4356 M/W 240-3886	352/795-9097 274-8814 (P)* 352/422-8513 (C)
Alternate:	H. B. Oates	352/563-4789 M/W 240-3777	352/382-4652 275-3675 352/422-8414 (C)

P = Pager
C = Cellular Phone

Positions enclosed by a box are required to declare the EOF operational.
Contact only one individual per emergency position unless otherwise indicated. Check appropriate box for individual contacted.

<u>Priority</u>	<u>Emergency Title</u>	<u>Contacted</u>	<u>Name</u>	<u>Office Number</u>	<u>Home Number</u>
1	Corporate Health Physicist	<input type="checkbox"/> Primary	S. M. Garry	352/563-4777 M/W 240-3281	352/746-9625 274-7686 (P)* 352/422-8457 (C)
		<input type="checkbox"/> Alternate	A. Kazemfar	352/563-4874 M/W 240-3333	352/795-7988 274-3603 (P)* 352/422-8825 (C)
		<input type="checkbox"/> Alternate	D. A. McCollough	352/795-6486 M/W 240-4386	352/564-9288 274-3407 (P)*
2	EOF Accident Assessment Coordinator	<input type="checkbox"/> Primary	J. G. Smith	352/795-0504 M/W 240-6042	352/795-3827 274-6859 (P)*
		<input type="checkbox"/> Alternate	G. P. Hebb	352/795-6486 M/W 240-3884	352/382-3391 275-2952 (P)* 352/422-8604 (C)
		<input type="checkbox"/> Alternate	J. L. Springer	352/795-6486 M/W 240-3452	352/795-7508 274-3390 (P)*

* Access pager by dialing *900 from FPC internally OR 1-800-241-4653, then follow instructions.



RADIOLOGICAL EMERGENCY PLANNING DEPARTMENT PROCEDURE

REP-02 Rev. 71

Date 07/18/00

Page 15 of 34

TITLE:

ACTIVATION AND NOTIFICATION OF THE
EMERGENCY OPERATIONS FACILITY ORGANIZATION- ATTACHMENT 1 -
EOF PERSONNEL DIRECTORY AND NOTIFICATION NETWORK

(Page 6 of 9)

CORPORATE HEALTH PHYSICIST CALL LIST

	<u>Name</u>	<u>Office Number</u>	<u>Home Number</u>
Primary:	S. M. Garry	352/563-4777 M/W 240-3281	352/746-9625 274-7686 (P)* 352/422-8457 (C)
Alternate:	A. Kazemfar	352/563-4874 M/W 240-3333	352/795-7988 274-3603 (P)* 352/422-8825 (C)
Alternate:	D. A. McCollough	352/795-6486 M/W 240-4386	352/564-9288 274-3407 (P)*

P = Pager
C = Cellular Phone

Contact only one individual per emergency position unless otherwise indicated. Check appropriate box for individual contacted.

<u>Priority</u>	<u>Emergency Title</u>	<u>Contacted</u>	<u>Name</u>	<u>Office Number</u>	<u>Home Number</u>
1	EOF Dose Assessment Member (Contact a minimum of three individuals for this position.)	<input type="checkbox"/> Primary	P. F. Ezzell	352/563-4778 M/W 240-3624	352/795-6114 274-8413 (P)*
		<input type="checkbox"/> Alternate	J. H. Payne	352/563-4306 M/W 240-3126	352/465-4034 274-8303 (P)*
		<input type="checkbox"/> Alternate	G. H. Cadwell	352/422-8995 M/W 240-8995	352/795-4347 274-8479 (P)*
		<input type="checkbox"/> Alternate	J. D. Gilbert	352/563-2943 M/W 240-3173	352/382-4331 274-3260 (P)* 352/422-8469 (C)
		<input type="checkbox"/> Alternate	S. D. Brown	352/795-0504 M/W 240-6327	352/527-9374 274-1380 (P)*
2	FPC Field Team Liaison	<input type="checkbox"/> Primary	D. J. Bourscheid	352/795-0504 M/W 240-6135	352/795-3996
		<input type="checkbox"/> Alternate	S. D. Mansfield	352/795-0504 M/W 240-6172	352/795-0532 275-3380 (P)*
		<input type="checkbox"/> Alternate	Member of TSC Radiation Monitoring Team		

* Access pager by dialing *900 from FPC internally OR 1-800-241-4653, then follow instructions.



RADIOLOGICAL EMERGENCY PLANNING DEPARTMENT PROCEDURE

REP-02 Rev. 71

Date 07/18/00

Page 16 of 34

TITLE:

ACTIVATION AND NOTIFICATION OF THE
EMERGENCY OPERATIONS FACILITY ORGANIZATION- ATTACHMENT 1 -
EOF PERSONNEL DIRECTORY AND NOTIFICATION NETWORK

(Page 7 of 9)

EOF ACCIDENT ASSESSMENT COORDINATOR CALL LIST

	<u>Name</u>	<u>Office Number</u>	<u>Home Number</u>
Primary:	J. G. Smith	352/795-0504 M/W 240-6042	352/795-3827 274-6859 (P)*
Alternate:	G. P. Hebb	352/795-6486 M/W 240-3884	352/382-3391 275-2952 (P)* 352/422-8604 (C)
Alternate:	J. L. Springer	352/795-6486 M/W 240-3452	352/795-7508 274-3390 (P)*

P = Pager
C = Cellular Phone

Contact only one individual per emergency position. Check appropriate box for individual contacted.

<u>Priority</u>	<u>Emergency Title</u>	<u>Contacted</u>	<u>Name</u>	<u>Office Number</u>	<u>Home Number</u>
1	EOF Accident Assessment Operations Representative	<input type="checkbox"/> Primary	C. M. Crosten	352/795-0504 M/W 240-6191	352/795-8020 274-8462 (P)*
		<input type="checkbox"/> Alternate	A. T. Kennedy	352/795-0504 M/W 240-6129	352/563-1739 274-8462 (P)*
		<input type="checkbox"/> Alternate	M. Gallian	352/795-0504 M/W 240-6290	352/795-9044 274-8462 (P)*
		<input type="checkbox"/> Alternate	M. P. Holmes	352/795-0504 M/W 240-6254	352/795-1713
		<input type="checkbox"/> Alternate	D. E. Smith	352/795-0504 M/W 240-6253	352/795-8009
2	EOF Accident Assessment Engineer	<input type="checkbox"/> Primary	T. V. Austin	352/563-4515 M/W 240-3046	352/795-7265 275-3465 (P)*
		<input type="checkbox"/> Alternate	J. L. O'Brian	352/795-6486 M/W 240-3832	352/344-4003 352/422-8813 (C)
		<input type="checkbox"/> Alternate	S. J. Roe	352/795-6486 M/W 240-3516	352/628-0158 274-6749 (P)*
		<input type="checkbox"/> Alternate	S. K. Balliet	352/563-4508 M/W 240-3394	352/564-1795 274-3945 (P)*
		<input type="checkbox"/> Alternate	J. S. Endsley	352/563-4866 M/W 240-3070	352/795-5382 274-2912 (P)*
		<input type="checkbox"/> Alternate	R. Iwachow	352/795-6486 M/W 240-3562	352/746-4865 274-6756 (P)* 352/422-8471 (C)
3	EOF Risk Analysis Representative	<input type="checkbox"/> Primary	D. N. Miskiewicz	352/795-6486 M/W 240-3019	352/746-0685 274-0436 (P)*
		<input type="checkbox"/> Alternate	J. R. Weaver	352/795-6486 M/W 240-3315	352/795-8924
		<input type="checkbox"/> Alternate	L. W. Harris	352/795-6486 M/W 240-3705	352/489-3197 274-6739 (P)*

* Access pager by dialing *900 from FPC internally OR 1-800-241-4653, then follow instructions.



RADIOLOGICAL EMERGENCY PLANNING DEPARTMENT PROCEDURE

REP-02 Rev. 71

Date 07/18/00

Page 17 of 34

TITLE:

ACTIVATION AND NOTIFICATION OF THE
EMERGENCY OPERATIONS FACILITY ORGANIZATION- ATTACHMENT 1 -
EOF PERSONNEL DIRECTORY AND NOTIFICATION NETWORK

(Page 8 of 9)

ADMINISTRATIVE MANAGER CALL LIST

	Name	Office Number	Home Number
Primary:	J. M. Anna	352/563-4480 M/W 240-4480	352/795-0067
Alternate:	N. J. Hooper	352/422-8431 M/W 240-8431	352/795-9568 274-1212 (P)*
Alternate:	M. A. Riley	352/563-4848 M/W 240-4848	352/489-5875

P = Pager
C = Cellular Phone

Contact only one individual per emergency position. Check appropriate box for individual contacted.

Priority	Emergency Title	Contacted	Name	Office Number	Home Number
1	Corporate Security Specialist	<input type="checkbox"/> Primary	D. H. Harrelson	352/563-4376 M/W 240-4376	352/637-1061 276-1739 (P)** 352/422-3475 (C)
		<input type="checkbox"/> Alternate	D. D. Watson	352/563-4375 M/W 240-4375	352/726-0756 274-9169 (P)*
		<input type="checkbox"/> Alternate	On-Duty Captain	M/W 240-4307	
2	Medical Representative	<input type="checkbox"/> Primary	D. A. Brown	352/563-4353 M/W 240-4353	352/465-3989 275-0233 (P)*
		<input type="checkbox"/> Alternate	K. G. Linhart	352/563-4352 M/W 240-4352	352/489-3567 274-4088 (P)*
		<input type="checkbox"/> Alternate	D. Fugate	352/563-4355 M/W 240-4355	352/382-5583
3	Materials Manager	<input type="checkbox"/> Primary	R. J. Slottke	352/563-4715 M/W 240-4715	352/795-6346 274-4070 (P)* 352/422-8421 (C)
		<input type="checkbox"/> Alternate	G. A. Christie	352/563-4329 M/W 240-4329	352/795-2414 274-9002 (P)*
		<input type="checkbox"/> Alternate	M. I. Ruether	352/563-4342 M/W 240-4342	352/382-4341

* Access pager by dialing *900 from FPC internally OR 1-800-241-4653, then follow instructions.
** Access pager by dialing 1-800-280-6493.



RADIOLOGICAL EMERGENCY PLANNING DEPARTMENT PROCEDURE

REP-02 Rev. 71

Date 07/18/00

Page 18 of 34

TITLE:

ACTIVATION AND NOTIFICATION OF THE EMERGENCY OPERATIONS FACILITY ORGANIZATION

- ATTACHMENT 1 -
EOF PERSONNEL DIRECTORY AND NOTIFICATION NETWORK

(Page 9 of 9)

EOF STATE AND LOCAL GOVERNMENT LIAISON CALL LIST

	<u>Name</u>	<u>Office Number</u>	<u>Home Number</u>
Primary:	F. Frando	352/563-4795 M/W 240-3045	352/465-7343
Alternate:	L. V. Cecilia	352/563-4546 M/W 240-3190	352/563-0046 275-3679 (P)*
Alternate:	P. E. Infanger	352/563-4796 M/W 240-3166	352/873-4863 274-4935 (P)*

P = Pager
C = Cellular Phone

Contact only one individual per emergency position. Check appropriate box for individual contacted.

<u>Priority</u>	<u>Emergency Title</u>	<u>Contacted</u>	<u>Name</u>	<u>Office Number</u>	<u>Home Number</u>
1	EOF NRC Liaison	<input type="checkbox"/> Primary	W. J. Pike	352/563-4970 M/W 240-3642	352/527-8853 275-3685 (P)* 352/422-8409 (C)
		<input type="checkbox"/> Alternate	P. M. Peterson	352/795-6486 M/W 240-3602	352/382-0342 275-3683 (P)*
		<input type="checkbox"/> Alternate	R. L. McLaughlin	352/563-4836 M/W 240-3463	352/212-7620 (C) 275-0171 (P)*
2	FPC Citrus County EOC Representative	<input type="checkbox"/> Primary	M. R. Casada	352/795-6486 M/W 240-3354	352/726-2317
		<input type="checkbox"/> Alternate	G. W. Wilson	352/795-6486 M/W 240-3850	352/746-3174 274-0596 (P)*
3	FPC Levy County EOC Representative	<input type="checkbox"/> Primary	M. E. Collins	352/795-6486 M/W 240-3648	352/331-6559
		<input type="checkbox"/> Alternate	L. R. McDougal	352/563-4988 M/W 240-3988	352/375-7033 275-3682 (P)* 352/422-8598 (C)

* Access pager by dialing *900 from FPC internally OR 1-800-241-4653, then follow instructions.



RADIOLOGICAL EMERGENCY PLANNING DEPARTMENT PROCEDURE

REP-02 Rev. 71

Date 07/18/00

Page 19 of 34

TITLE:

**ACTIVATION AND NOTIFICATION OF THE
EMERGENCY OPERATIONS FACILITY ORGANIZATION**

- ATTACHMENT 2 -

FACILITY DIRECTORY

<u>Facility</u>	<u>Location</u>	<u>Telephone</u>
EOF and ENC	Nuclear Operations Training Facility Crystal River, FL	352/795-0504
	FPC Business Offices:	
	Dunnellon, FL	352/465-2334 M/W 220-6550
	Inverness, FL	352/726-4049
	Crystal River, FL	352/795-6382 M/W 240-6307
TSC/OSC	CR-3 Nuclear Plant Crystal River, FL	Refer to Emergency Facility Telephone Book.



RADIOLOGICAL EMERGENCY PLANNING DEPARTMENT PROCEDURE

REP-02 Rev. 71

Date 07/18/00

Page 20 of 34

TITLE: ACTIVATION AND NOTIFICATION OF THE
EMERGENCY OPERATIONS FACILITY ORGANIZATION

- ATTACHMENT 3 -
OFF-SITE ORGANIZATIONS COMMUNICATIONS CONTACTS

(Page 1 of 10)

SERVICE	NAME/CONTACT	TELEPHONE	FPC CONTACT(S)
AIRCRAFT SERVICE	FPC Flight Dept. (1) Jill A. Raley (2) Joe R. Skidmore	727/531-2308 (W) (1) 727/321-9633 (H) 727/529-6028 (P) (2) 941/747-9766 (H) 800/913-0828 (P)	
AMBULANCE SERVICE (Non-Radiological and Radiological)	Florida Regional Emergency Medical Services 110 N. Apopka Ave. Inverness, FL	9-1-1	
AMERICAN NUCLEAR INSURERS (ANI) (Property Damage and Fire Protection Impairments)		860/561-3433	
BABCOCK & WILCOX (B&W) (See FRAMATOME TECHNOLOGIES.)			
COUNTY EMERGENCY MANAGEMENT/DISASTER PREPAREDNESS			
CITRUS COUNTY	James T. Soukup FPC Representative at Citrus EOC	352/726-4488, X277 352/746-6555 (24 hrs.) 352/344-8779 (H) 352/898-5926 (P) 352/422-4392 (C) 352/527-2407	EOF State and Local Government Liaison
LEVY COUNTY	Paula E. Lane FPC Representative at Levy EOC	352/486-5213 352/490-5263 (H) 352/215-8364 (C) 800/241-4653 (P) (274-5552) 352/486-5428	EOF State and Local Government Liaison



RADIOLOGICAL EMERGENCY PLANNING DEPARTMENT PROCEDURE

REP-02 Rev. 71

Date 07/18/00

Page 21 of 34

TITLE: ACTIVATION AND NOTIFICATION OF THE
EMERGENCY OPERATIONS FACILITY ORGANIZATION

- ATTACHMENT 3 -
OFF-SITE ORGANIZATIONS COMMUNICATIONS CONTACTS

(Page 2 of 10)

SERVICE	NAME/CONTACT	TELEPHONE	FPC CONTACT(S)
DOE (U.S. DEPARTMENT OF ENERGY)			
REAC/TS, OAK RIDGE ASSOCIATED UNIVERSITIES (ORAU)	Dr. Robert C. Ricks	865/576-3131 (8 a.m. - 4:30 p.m.) 865/576-1005 (24 hr./emergency)	
OAK RIDGE NATIONAL LABORATORIES (ORNL)	Dr. Lee R. Riciputi	865/574-2449	
DOE RADIOLOGICAL ASSISTANCE PROGRAM (RAP)		865/576-1005 865/525-7885	
E			
ELECTRIC POWER RESEARCH INSTITUTE (EPRI) (California)	Theodore Marston	650/855-2000 650/855-2321 (EPRI Security)	
NUCLEAR SAFETY DEPT. OF NUCLEAR POWER DIVISION OF EPRI		650/855-2997	
U.S. ENVIRONMENTAL PROTECTION AGENCY, REGION IV (EPA)		404/562-8700 (24 hr. emergency response)	Assistant EOF Director
EMERGENCY EQUIPMENT REPAIR			
RADIOLOGICAL MONITORING EQUIPMENT	Don G. Price, Jr. Southeastern Atomic Labs (Gainesville, FL)	352/372-9716 (W)	
F			
FEDERAL EMERGENCY MANAGEMENT AGENCY, REGION IV (FEMA) (Atlanta, GA)		770/220-5200 (24 hr. service)	EOF Director



RADIOLOGICAL EMERGENCY PLANNING DEPARTMENT PROCEDURE

REP-02 Rev. 71

Date 07/18/00

Page 22 of 34

TITLE:

ACTIVATION AND NOTIFICATION OF THE
EMERGENCY OPERATIONS FACILITY ORGANIZATION

- ATTACHMENT 3 -
OFF-SITE ORGANIZATIONS COMMUNICATIONS CONTACTS

(Page 3 of 10)

SERVICE	NAME/CONTACT	TELEPHONE	EOF CONTACT(S)
FPC SUPPORT**			
CLAIMS	Richard L. Anderson	Office: 727/826-4392 M/W 230-4392 Pager: 800/280-6493 276-2491 Home: 727/391-8969	
	Tom E. Moorhouse	Office: 727/826-4300 M/W 230-4300 Pager: 800/280-6493 276-2492 Home: 727/443-5500	
COMPUTER SERVICES SUPPORT (Information Technology)	Hugh H. Murphy	Office: 352/563-4744 M/W 240-4744 Pager: 800/280-6493 276-1437 Home: 727/844-0222	
	Darryl L. Kendall	Office: 352/563-2943 M/W 240-4162 Pager: 800/280-6493 276-1456 Home: 352/563-5273	
EMPLOYEE INFORMATION (FPC) (Human Resources Systems Request)	Marilyn C. Marra	Office: 727/820-5795 M/W 230-5795 Home: 727/319-4161	
	Ray A. Edmonds, Jr.	Office: 352/795-0504 M/W 240-6376 Pager: 800/280-6493 276-2125 Home: 352/795-0380	

* Access pager by dialing *900 from FPC internally OR 1-800-241-4653, then follow instructions.

** The individuals in this category are contact points for support and do not necessarily respond to the EOF.



RADIOLOGICAL EMERGENCY PLANNING DEPARTMENT PROCEDURE

REP-02 Rev. 71

Date 07/18/00

Page 23 of 34

TITLE: ACTIVATION AND NOTIFICATION OF THE
EMERGENCY OPERATIONS FACILITY ORGANIZATION

- ATTACHMENT 3 -
OFF-SITE ORGANIZATIONS COMMUNICATIONS CONTACTS

(Page 4 of 10)

SERVICE	NAME/CONTACT	TELEPHONE	EOF CONTACT(S)
FPC SUPPORT** (Cont'd)			
FINANCE/ ACCOUNTING	Phil Yee	Office: 727/820-5331 M/W 230-5331 Home: 727/578-0862	
LABOR (Supplemental Labor Resources)	Susan I. McDonald	Office: 352/563-4702 M/W 240-5202 Home: 352/344-9126	
LEGAL	Rodney E. Gaddy	Office: 727/820-5098 M/W 230-5098 Home: 813/855-8438	
RISK MANAGEMENT	Beth J. Warren Newman L. (Hoop) Hoopingarner	Office: 727/820-5979 M/W 230-5979 Home: 727/538-2150 Office: 727/820-5986 M/W 230-5986 Home: 727/532-0792	

* Access pager by dialing *900 from FPC internally OR 1-800-241-4653, then follow instructions.

** The individuals in this category are contact points for support and do not necessarily respond to the EOF.



RADIOLOGICAL EMERGENCY PLANNING DEPARTMENT PROCEDURE

REP-02 Rev. 71

Date 07/18/00

Page 24 of 34

TITLE:

ACTIVATION AND NOTIFICATION OF THE
EMERGENCY OPERATIONS FACILITY ORGANIZATION

- ATTACHMENT 3 -
OFF-SITE ORGANIZATIONS COMMUNICATIONS CONTACTS

(Page 5 of 10)

SERVICE	NAME/CONTACT	TELEPHONE	EOF CONTACT(S)
FPC SUPPORT** (Cont'd)			
SIMULATOR SUPPORT	R. Dave deMontfort	Office: 352/563-4948 M/W 240-6248 Pager: 275-0287* Home: 352/795-9693	
	Don E. Smith	Office: 352/795-0504 M/W 240-6253 Home: 352/795-8009	
TELECOMMUNICATIONS (Information Technology Support)	F. Jon Cembruch	Office: 352/795-6844 M/W 240-6207 Pager: 276-2999*** Cell: 352/422-8406 Home: 904/454-1226	
	Donna L. Davis	Office: 352/563-4997 M/W 240-6879 Pager: 276-2376*** Home: 352/621-9737	
TRANSPORTATION	John E. Farabaugh	Office: 352/563-4996 M/W 240-5678 Pager: 276-2378*** Cell: 352/422-8717 Home: 352/795-5974	
	F. Jay Wooldridge	Office: 727/893-9721 M/W 220-3721 Pager: 276-1238*** Home: 727/544-4182	
	Gail F. Phifer (Mr.)	Office: 727/893-9382 M/W 220-3382 Pager: 276-1248*** Home: 727/381-4126	

* Access pager by dialing *900 from FPC internally OR 1-800-241-4653, then follow instructions.

** The individuals in this category are contact points for support and do not necessarily respond to the EOF.

*** Access pager by dialing 1-800-280-6493, then follow instructions.



RADIOLOGICAL EMERGENCY PLANNING DEPARTMENT PROCEDURE

REP-02 Rev. 71

Date 07/18/00

Page 25 of 34

TITLE: ACTIVATION AND NOTIFICATION OF THE
EMERGENCY OPERATIONS FACILITY ORGANIZATION

- ATTACHMENT 3 -
OFF-SITE ORGANIZATIONS COMMUNICATIONS CONTACTS

(Page 6 of 10)

SERVICE	NAME/CONTACT	TELEPHONE	EOF CONTACT(S)
FRAMATOME TECHNOLOGIES (formerly Babcock & Wilcox)			
FRAMATOME TECHNOLOGIES	Framatome Technologies	804/832-3000 or -3001 (switchboard - 24 hrs.)	EOF Accident Assessment Coordinator
FRAMATOME TECHNOLOGIES CUSTOMER SERVICE MANAGER	John M. Helmey	804/832-3359 (W) 804/525-0583 (H)	
GILBERT ASSOCIATES, INC. (See Parsons Power.)			
HOSPITALS NON-RADIOLOGICAL OR RADIOLOGICAL INJURIES:			
SEVEN RIVERS COMMUNITY HOSPITAL		352/795-6560 352/795-8335 (Emergency Room)	
CITRUS MEMORIAL HOSPITAL		352/726-1551 352/344-6569 (Emergency Room)	
I			
INSTITUTE OF NUCLEAR POWER OPERATIONS (INPO)	INPO Duty Officer Emergency Response Center	800/321-0614 770/644-8000 (switchboard) TELECOPY: (PRI) 770/644-8549 (ALT) 770/644-8567	EOF Director/ Communications Director

* Access pager by dialing *900 from FPC internally OR 1-800-241-4653, then follow instructions.



RADIOLOGICAL EMERGENCY PLANNING DEPARTMENT PROCEDURE

REP-02 Rev. 71

Date 07/18/00

Page 26 of 34

TITLE: ACTIVATION AND NOTIFICATION OF THE
EMERGENCY OPERATIONS FACILITY ORGANIZATION

- ATTACHMENT 3 -
OFF-SITE ORGANIZATIONS COMMUNICATIONS CONTACTS

(Page 7 of 10)

SERVICE	NAME/CONTACT	TELEPHONE	FPC CONTACT(S)
LAW ENFORCEMENT AGENCIES			
CITRUS COUNTY SHERIFF	Sheriff Jeffrey J. Dawsy	352/726-4488 9-1-1	EOF Security Representative
FLORIDA HIGHWAY PATROL	Brooksville, FL	352/754-6767 (800/500-1240)	
	Gainesville, FL	352/955-2150	
FLORIDA MARINE PATROL		352/447-1633 (8 a.m. - 5 p.m.) 800/342-5367 (Tampa/after hours)	
LEVY COUNTY SHERIFF	Sheriff Ted Glass	352/486-5111 800/538-9767	
NGRC (NUCLEAR GENERAL REVIEW COMMITTEE)			
NGRC	John J. Holden	352/563-4477 (W) 352/382-0280 (H)	
	R. E. (Bob) Grazio	352/563-4756 (W) 352/527-8679 (H)	
NRC (U.S. NUCLEAR REGULATORY COMMISSION)			
OFFICE OF NUCLEAR REACTOR REGULATION (NRR)	Project Manager Leonard A. Wiens	301/415-1495 (W)	EOF Director
REGION II OFFICE OF INSPECTION AND ENFORCEMENT	Luis A. Reyes	404/562-4410 (W)	EOF Director



RADIOLOGICAL EMERGENCY PLANNING DEPARTMENT PROCEDURE

REP-02 Rev. 71

Date 07/18/00

Page 27 of 34

TITLE: ACTIVATION AND NOTIFICATION OF THE
EMERGENCY OPERATIONS FACILITY ORGANIZATION

- ATTACHMENT 3 -
OFF-SITE ORGANIZATIONS COMMUNICATIONS CONTACTS

(Page 8 of 10)

SERVICE	NAME/CONTACT	TELEPHONE	FPC CONTACT(S)
NRC (U.S. NUCLEAR REGULATORY COMMISSION) (Cont'd)			
CR-3 RESIDENT INSPECTOR	J. "Scott" Stewart Steven P. Sanchez	352/795-7677 (W) 352/795-7678 (W) 352/527-9474 (H) 274-3420 (P)* 352/338-7571 (H) 274-9855 (P)*	EOF Director
OPERATIONS RESPONSE CENTER (Rockville, MD)		301/816-5100 301/951-0550	EOF Director
REACTOR PROJECTS (REGION II) (Atlanta, GA)	Loren R. Plisco	404/562-4501 800/636-2703 (P)	EOF Director
NRC REGION II HEADQUARTERS (Atlanta, GA)		404/562-4400	EOF Director
NRC REGION II FACSIMILE (Atlanta, GA)		404/562-4900 404/562-4901	
NRC OPERATIONS CENTER FACSIMILE (Rockville, MD)		301/816-5151	
PUBLIC INFORMATION OFFICE (Atlanta, GA)	Ken M. Clark Roger D. Hannah	404/562-4416 404/562-4980 (FAX) 404/562-4417	Corporate Communications Director
NRC OPERATIONS CENTER (Rockville, MD)	Emergency Notification System (ENS)	(1) 301/816-5100 (2) 301/951-0550 (3) 301/415-0553	EOF Director
NRC OPERATIONS CENTER (Rockville, MD)	Health Physics Network (HPN)	(1) 301/816-5100 (2) 301/951-0550	EOF Director
NRC OPERATIONS CENTER (Rockville, MD)	NRC Operator	301/415-7000	EOF Director

* Access pager by dialing *900 from FPC internally OR 1-800-241-4653, then follow instructions.



RADIOLOGICAL EMERGENCY PLANNING DEPARTMENT PROCEDURE

REP-02 Rev. 71

Date 07/18/00

Page 28 of 34

TITLE: ACTIVATION AND NOTIFICATION OF THE
EMERGENCY OPERATIONS FACILITY ORGANIZATION

- ATTACHMENT 3 -
OFF-SITE ORGANIZATIONS COMMUNICATIONS CONTACTS

(Page 9 of 10)

SERVICE	NAME/CONTACT	TELEPHONE	FPC CONTACT(S)
OFF-SITE MONITORING			
HYDROLOGIC: SOUTHWEST FLORIDA WATER MANAGEMENT DISTRICT (Brooksville, FL)		352/796-7211 352/796-1211 (after hours)	
METEOROLOGICAL: FAA FLIGHT SERVICE STATION (Gainesville, FL) (St. Petersburg, FL) TAMPA WEATHER SERVICE (Ruskin, FL)	Flight Service Station Flight Service Station Meteorologist Recorded Info. Emergency Only	800/992-7433 352/371-9702 727/536-6290 — Shift Supv. 727/536-6980 — 727/539-7491 (M-F only) 813/645-2323 813/645-2506 813/645-4111 (24 hrs.)	
SEISMIC: U.S. GEOLOGICAL SURVEY (Menlo Park, CA) (Golden, CO) UNIVERSITY OF FLORIDA DEPT. OF GEOLOGY	Dr. Douglas Smith	650/853-8300 303/273-8500 352/392-6766 (Office) 352/392-2231 (Dept.)	
PARSONS POWER (formerly Gilbert Associates, Inc.)			
PARSONS POWER	Robert E. Vaughn	610/855-2000, X2061 or 610/855-2061 (direct)	EOF Accident Assessment Coordinator



RADIOLOGICAL EMERGENCY PLANNING DEPARTMENT PROCEDURE

REP-02 Rev. 71

Date 07/18/00

Page 29 of 34

TITLE: ACTIVATION AND NOTIFICATION OF THE
EMERGENCY OPERATIONS FACILITY ORGANIZATION

- ATTACHMENT 3 -
OFF-SITE ORGANIZATIONS COMMUNICATIONS CONTACTS

(Page 10 of 10)

SERVICE	NAME/CONTACT	TELEPHONE	FPC CONTACT(S)
STATE AGENCIES			
DEPT. OF HEALTH (DOH), BUREAU OF RADIATION CONTROL (Orlando, FL)	Harlan W. Keaton	407/297-2095 (W) 941/439-2686 (H)	Assistant EOF Director
	Jearold C. Eakins	407/297-2095 (W) 407/880-2697 (H)	
	John A. Williamson	407/297-2095 (W) 407/389-0213 (H)	
DEPT. OF HEALTH (DOH), BUREAU OF RADIATION CONTROL (Cont'd) (Orlando, FL)	DOH Mobile Lab (MERL) at EOF	352/795-9509	EOF Director
	DOH Mobile Lab (MERL) at FPC Substation	352/795-1716	
STATE WARNING POINT (Tallahassee, FL)	State Duty Warning Officer	850/413-9911 800/320-0519 850/413-9910 850/488-7841 (FAX)	
UTILITIES			
FLORIDA POWER & LIGHT CO. (System Power Coordinator)	System Operator	305/442-5744 (24 hr. service) 305/442-5742 (interchange desk) 305/442-5743 (generation desk)	Assistant EOF Director
FLORIDA POWER CORPORATION (CR-3 Control Room)	Nuclear Shift Manager (NSM)	352/795-6958 877/563-4940 352/422-8898 (C)	
NUCLEAR ENERGY INSTITUTE (NEI)		202/739-8000 202/785-4019 (FAX)	Corporate Communications Director
UNITED TELEPHONE OF FLORIDA	Bonnie K. Stout	352/368-8706 For emergencies, after 5 p.m., weekends, and holidays, dial 611 (repair service).	Assistant EOF Director

Date: _____

- ATTACHMENT 4 -

(Page 1 of 5)

EOF ACCOUNTABILITY/FITNESS-FOR-DUTY (FFD) LOG FOR FPC PERSONNEL								
PRINTED NAME	EMERGENCY TITLE	BADGE NO.	TIME IN	TIME OUT	FFD*		SIGNATURE	AUTH.**
					YES	NO		
Anna, J. M.	Administrative Manager							
Armstrong, R. W.	EOF Setup/Status Boards							
Austin, J. G.	EOF Facility Manager							
Austin, T. V.	EOF Accident Assess. Engr.							
Bagwell, B. R.	EOF Accountability Rep.							
Balliet, S. K.	EOF Accident Assess. Engr.							
Bernhoft, S. L.	EOF Director							
Bourscheid, D. J.	FPC Field Team Liaison							
Bright, R. M.	FPC State EOC Rep.							
Brown, D. A.	Medical Representative							
Brown, S. D.	EOF Dose Assessment Member							
Cadwell, G. H.	EOF Dose Assessment Member							
Cardinali, R. G.	EOF Setup/Status Boards							
Casada, M. R.	FPC Citrus Co. EOC Rep.							
Cecilia, L. V.	EOF State & Local Govt. Liaison							
Christie, G. A.	Materials Manager							
Collins, M. E.	FPC Levy Co. EOC Rep.							

* An emergency responder is considered "fit-for-duty" if they have not consumed any alcohol during the pre-duty 5 hour abstinence period. If YES (fit-for-duty), access may be granted. If NO (not fit-for-duty), the EOF Accountability Representative should notify the EOF Director and instruct the individual to report to the area designated by the EOF Director and stand by for further instructions.

** The EOF Director may approve an individual who has not met the 5 hour abstinence period requirement to staff an emergency position provided a determination of fitness-for-duty is made. This may be accomplished by breath analysis. In addition, a responsible supervisor shall interview the employee to further ascertain fitness-for-duty. If the individual is fit-for-duty, no further authorization is required.

Date: _____

- ATTACHMENT 4 (Cont'd) -

(Page 2 of 5)

EOF ACCOUNTABILITY/FITNESS-FOR-DUTY (FFD) LOG FOR FPC PERSONNEL								
PRINTED NAME	EMERGENCY TITLE	BADGE NO.	TIME IN	TIME OUT	FFD*		SIGNATURE	AUTH.**
					YES	NO		
Cowan, J. P.	Vice President, Nucl. Ops.							
Crosten, C. M.	EOF Acc. Assess. Ops. Rep.							
Dearing, C. R.	EOF Accountability Rep.							
Elam, J. C.	EOF Setup/Status Boards							
Endsley, J. S.	EOF Accident Assess. Engr.							
Ezzell, P. F.	EOF Dose Assessment Member							
Forbrick, M. N.	Communications Director							
Frando, F.	EOF State & Local Govt. Liaison							
Fugate, D.	Medical Representative							
Fuller, M. J.	State and County EOC Communicator							
Gallian, M.	EOF Acc. Assess. Ops. Rep.							
Garry, S. M.	Corporate Health Physicist							
Gilbert, J. D.	EOF Dose Assessment Member							
Grazio, R. E.	EOF Director							
Grider, M. A.	EOF Setup/Status Boards							
Gwaltney, W. E.	EOF Setup/Status Boards							
Hampton, K. E.	EOF Communicator							
Hardin, L. W.	EOF Facility Manager							
Harrelson, D. H.	Corporate Security Spec.							

Date: _____

- ATTACHMENT 4 (Cont'd) -

(Page 3 of 5)

EOF ACCOUNTABILITY/FITNESS-FOR-DUTY (FFD) LOG FOR FPC PERSONNEL								
PRINTED NAME	EMERGENCY TITLE	BADGE NO.	TIME IN	TIME OUT	FFD*		SIGNATURE	AUTH.**
					YES	NO		
Harris, L. W.	EOF Risk Analysis Rep.							
Harris, M. S.	Communications Director							
Hebb, G. P.	EOF Accident Assess. Coord.							
Hensley, L. W.	EOF Setup/Status Boards							
Holmes, M. P.	EOF Acc. Assess. Ops. Rep.							
Hooper, N. J.	Administrative Manager							
Infanger, P. E.	EOF State & Local Govt. Liaison							
Iwachow, R.	EOF Accident Assess. Engr.							
Janka, R. A.	Communications Director							
Johnson, S. G.	EOF Director							
Kazemfar, A.	Corporate Health Physicist							
Kennedy, A. T.	EOF Acc. Assess. Ops. Rep.							
Komara, B. P.	State and County EOC Communicator							
Lancaster, K. F.	Asst. EOF Director							
Linhart, K. G.	Medical Representative							
Linton, R. L.	Asst. EOF Director							
Mansfield, S. D.	FPC Field Team Liaison							
McCollough, D. A.	Corporate Health Physicist							
McDougal, L. R.	FPC Levy Co. EOC Rep.							

Date: _____

- ATTACHMENT 4 (Cont'd) -

(Page 4 of 5)

EOF ACCOUNTABILITY/FITNESS-FOR-DUTY (FFD) LOG FOR FPC PERSONNEL								
PRINTED NAME	EMERGENCY TITLE	BADGE NO.	TIME IN	TIME OUT	FFD*		SIGNATURE	AUTH.**
					YES	NO		
McLauglin, R. L.	EOF NRC Liaison							
Miskiewicz, D. N.	EOF Risk Analysis Rep.							
Oates, H. B.	EOF Tech. Support Director							
O'Brian, J. L.	EOF Accident Assess. Engr.							
Owen, J. P.	EOF Communicator							
Payne, J. H.	EOF Dose Assessment Member							
Peterson, P. M.	EOF NRC Liaison							
Petrowsky, A.	EOF Tech. Support Director							
Pike, W. J.	EOF NRC Liaison							
Plummer, F. A.	EOF Accountability Rep.							
Ranalli, J. A.	EOF Tech. Support Director							
Riley, M. A.	Administrative Manager							
Roberts, H. D.	EOF Communicator							
Roe, S. J.	EOF Accident Assess. Engr.							
Rogers, R. L.	EOF Setup/Status Boards							
Ruether, M. I.	Materials Manager							
Savage, D. W.	EOF Setup/Status Boards							
Slottke, R. J.	Materials Manager							
Smith, D. E.	EOF Acc. Assess. Ops. Rep.							
Smith, J. G.	EOF Accident Assess. Coord.							

Date: _____

- ATTACHMENT 4 (Cont'd) -

(Page 5 of 5)

EOF ACCOUNTABILITY/FITNESS-FOR-DUTY (FFD) LOG FOR FPC PERSONNEL								
PRINTED NAME	EMERGENCY TITLE	BADGE NO.	TIME IN	TIME OUT	FFD*		SIGNATURE	AUTH.**
					YES	NO		
Snow, L. G.	EOF Facility Manager							
Springer, J. L.	EOF Accident Assess. Coord.							
Surber, R. G.	State and County EOC Communicator							
Sweeney, G. J.	EOF Setup/Status Boards							
Taylor, T. H.	EOF Directo							
Trump, M. A.	Asst. EOF Director							
Walters, C. L.	EOF Accountability Rep.							
Watson, D. D.	Corporate Security Spec.							
Weaver, J. R.	EOF Risk Analysis Rep.							
Widell, R. C.	Asst. EOF Director							
Wilson, G. W.	FPC Citrus Co. EOC Rep.							
Wilson, K. R.	FPC State EOC Rep.							
Williams, T. E.	EOF Tech. Support Director							
Wood, D. J.	EOF Facility Manager							