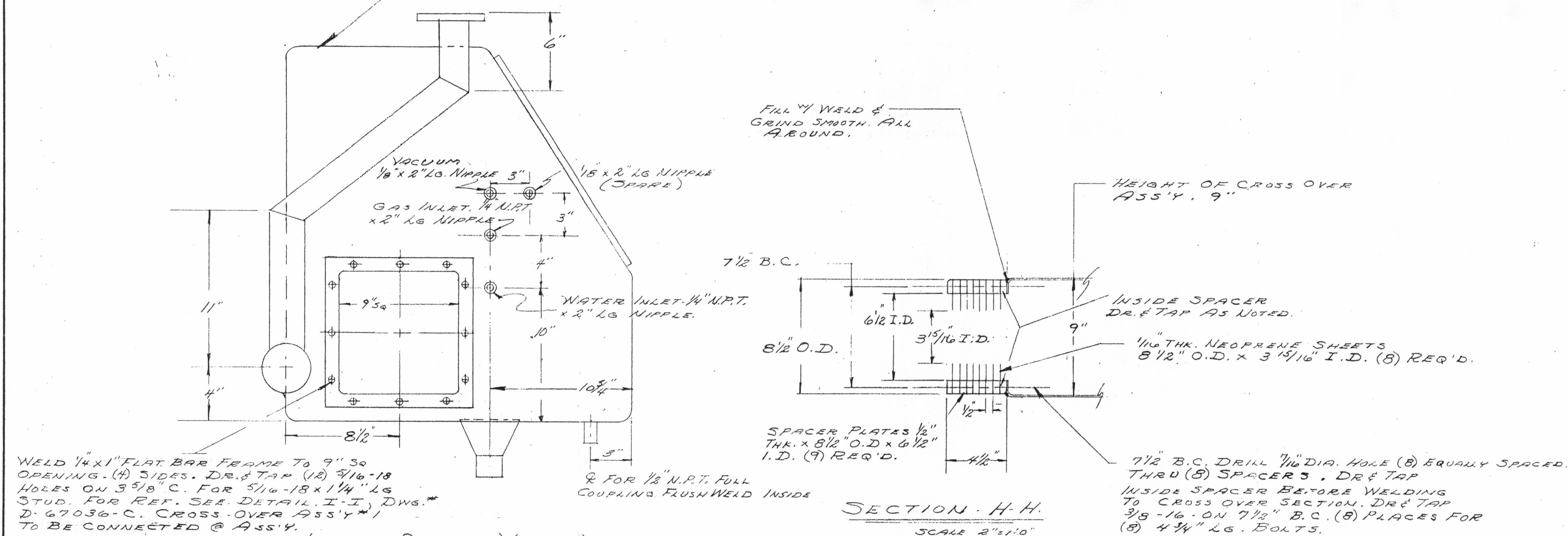


GENERAL NOTES:

FOR CONSTRUCTION DIM'S
SEE DWG. #D-67036-C FOR
STYLE IA GLOVE BOX.



STYLE IA GLOVE BOX.

2- REQ'D.

SCALE: 2" = 1'-0"

SPHINCTER VALVE

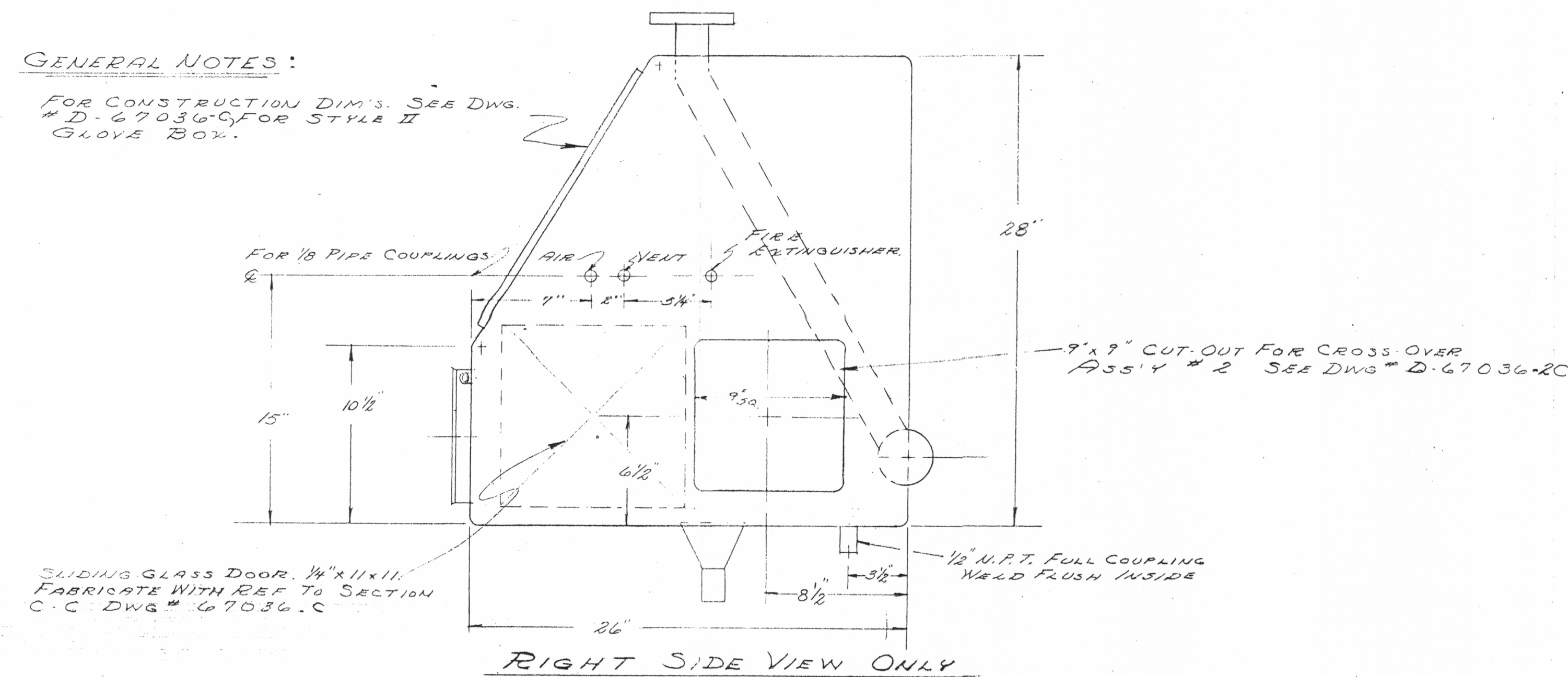
SEE DWG. #D-67036-2 FOR LOCATION.

NOTE:

(2) REQ'D. SUPPLIED BY W.R. GRACE
INSTALLED BY VENDOR.

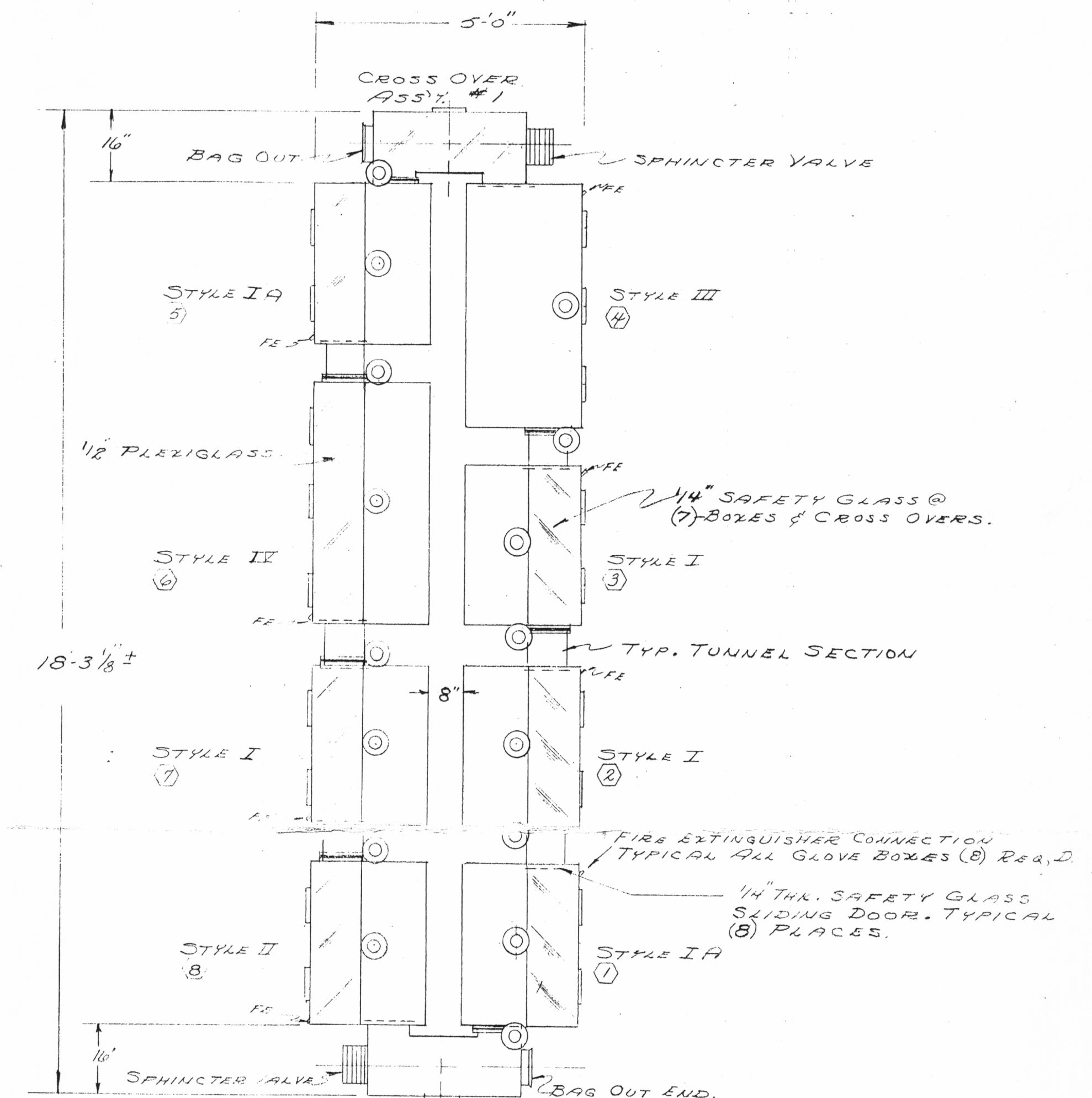
GENERAL NOTES:

FOR CONSTRUCTION DIM'S. SEE DWG.
#D-67036-C FOR STYLE II
GLOVE BOX.



STYLE II, GLOVE BOX

SCALE: 2" = 1'-0"



GENERAL NOTE

1. FINAL ASSEMBLY BY OTHERS.
2. FABRICATOR TO FURNISH ALL MAT'L. REQ'D FOR COMPLETE JOB INCLUDING GLASS, PLEXIGLASS, GASKETS NUTS, BOLTS, ETC.

<u>W.R.C.</u>		<u>BLDG 1A</u>	
<u>GLOVE BOXES</u>			
<u>DETAILS & ASSEMBLY</u>			
W. R. GRACE & CO.		OCT 5 1967	
RESEARCH DIVISION			
CLARKSVILLE, MD.			
MADE BY	SCALE AS NOTED	DATE	8/20/67
DRAWN BY CAYNAUGH			
CHECKED BY WRC 8-2-67			
APPROVED BY	DRAWING No. D-67036-4C		

DATE	MADE BY	DESCRIPTION OF REVISION	LETTER
7/14/67	W.C.	GEN. REV.	C.
8/7/67	W.C.	ADDED UTILITY CONNECTION	B
7/3/67	W.C.	GEN. REV.	A