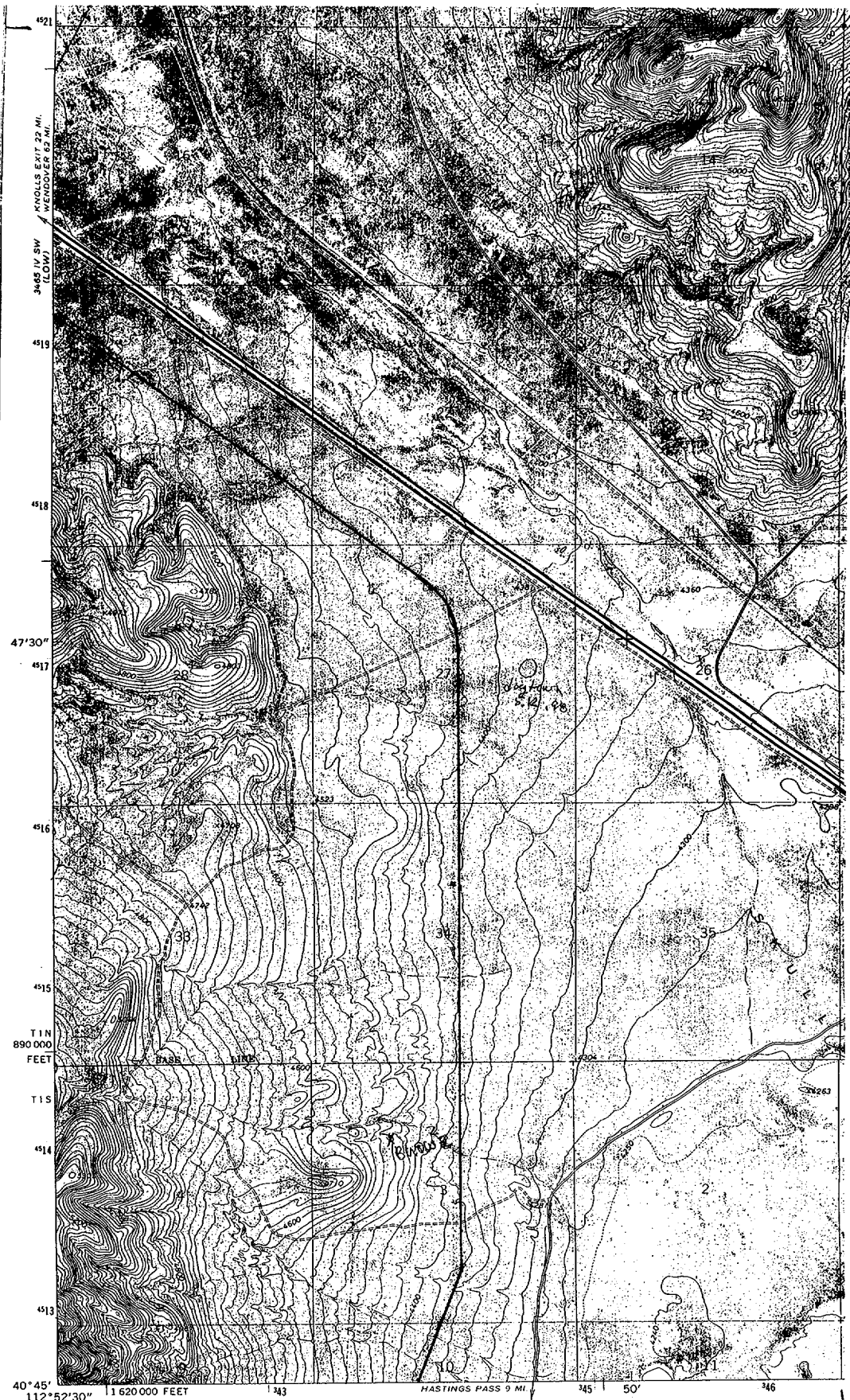
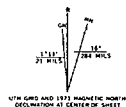


Exhibit 1



(Mapped, edited, and published by the Geological Survey
 Control by USGS and NOS/NOAA
 Topography by photogrammetric methods from aerial
 photographs taken 1972. Orthophotomosaic from aerial
 photographs taken 1972. Field checked 1973
 Projection and 10,000 foot grid ticks: Utah
 coordinate system, central zone (Lambert conformal conic)
 1000-meter Universal Transverse Mercator grid ticks,
 zone 12, shown in blue. 1927 North American datum



SCALE 1:24,000
 1000 0 1000 2000 3000 4000 5000 6000 7000 8000 9000 10000
 FEET
 0 1 2 3 4 5 6 7 8 9 10
 KILOMETERS
 CONTOUR INTERVAL 20 FEET
 DOTTED LINES REPRESENT 17,500 CONTOURS
 NATIONAL GEODETIC VERTICAL DATUM OF 1929
 THIS MAP COMPLIES WITH NATIONAL MAP ACCURACY STANDARDS
 FOR SALE BY U.S. GEOLOGICAL SURVEY, DENVER, COLORADO 80275, OR RESTON, VIRGINIA 22092
 A FOLDER DESCRIBING TOPOGRAPHIC MAPS AND SYMBOLS IS AVAILABLE ON REQUEST



ROAD CLASSIFICATION
 Primary highway, hard surface ——— Light-duty road, hard or improved surface ———
 Secondary highway, hard surface ——— Unimproved road ———
 Interstate Route ——— U. S. Route ——— State Route ———

DELLE, UTAH
 N4045-W11265/7.5
 1973
 AMS 3465 IV SE-SERIES 5887

