

APR 17 2000

Delivery Order #: 090
Purchase Order No.: DR-97-0398

Contractor: Haworth Inc.
c/o - Price Modern of Washington (Mark Mahan)
9700G Martin Luther King Jr. Highway
Lanham, Maryland 20706

In accordance with Delivery Order No. DR-97-0398 dated 06/4/97 and the contractor's proposal dated 04/06/00 (NRC4500.SIF), the contractor shall provide design, product and installation for the reconfiguration of the workstation at P1-17 of the Two White Flint North building. Delivery shall take place on June 8, 2000. The total cost for this order is as follows:

Product:	\$3,217.96
Design:	101.00
Installation:	405.00
Total:	\$3,723.96

Please contact RoseMary Mann, Contract Specialist on (301) 415-6595 If there are any questions regarding this order.

Date: _____

Robert Webber, Contracting Officer
Contract Management Branch 1
Division of Contracts and Property
Management
Office of Administration

DOCUMENT NAME: A1090

Acct R Mann J Lilley LFisher CMB1 r/f

To receive a copy of this document, indicate in the box: "C" = Copy

	ADM/DCPM/CMB1		ADM/DCPM/CMB1					
	R Mann <i>R Mann</i>		RWebber <i>RWebber</i>					
	04/13/00		04/13/00					

OFFICIAL RECORD COPY

Template = ADM001

ADM02

NRC4600.SIF
NRC, OWFN, P1-17, Roland Wood

LIST% CUSTOMER% CUSTOMERS

4-5-2000
16:38:14

#	Mfg	Qty	Part #	Description / Options	Unit	Extended
1	HGW	1	BFM-1-B	BASE FEED MODULE,HARDWIRE	145.00	145.00
					Customer	%71.72000
					41.01	41.01
			(B)	POWER BASE		
2	HGW	1	PRD-3-B	DUPLEX RECEPTACLES (BOX OF 6)	104.00	104.00
					Customer	%71.72000
					29.41	29.41
			(B)	POWER BASE		
			.TR-	SURFACE 1		
			00J	GRAPHITE		
3	HGW	4	FPFC-86-B	90 DEG FABRIC FINISH POST 56'	74.00	296.00
					Customer	%71.72000
					20.93	83.72
			(B)	POWER BASE		
			.OF-	BASKETWEAVE	GRADE B	
			07M	BIRCH		
			.TR-	SURFACE 2		
			00J	GRAPHITE		
			.TR-	SURFACE 3		
			00J	GRAPHITE		
4	HGW	2	EFN-266-B	STRAIGHT FABRIC PANEL NO-POWER 24" X 86"	595.00	1190.00
					Customer	%71.72000
					168.27	336.54
			(B)	POWER BASE		
			.OF-	BASKETWEAVE	GRADE B	
			07M	BIRCH		
			.OF-	BASKETWEAVE	GRADE B	
			07M	BIRCH		
			.TR-	SURFACE 3		
			00J	GRAPHITE		
			.TR-	SURFACE 4		
			00J	GRAPHITE		

NRC4600.SIF
NRC, OWFN, P1-17, Roland Wood

LIST\$ CUSTOMER% CUSTOMER\$

4-6-2000
15:38:14

#	Mfg	Qty	Part #	Description / Options	Unit	Extended
5	HGW	2	EFP-266-B	STRAIGHT FABRIC PANEL POWER 24" X 66"	723.00	1446.00
					Customer	%71.72000
					204.46	408.92
			(B)	POWER BASE		
			.0F-	BASKETWEAVE	GRADE B	
			07M	BIRCH		
			.0F-	BASKETWEAVE	GRADE B	
			07M	BIRCH		
			.TR-	SURFACE 3		
			00J	GRAPHITE		
			.TR-	SURFACE 4		
			00J	GRAPHITE		
6	HGW	1	EFP-3088-B	STRAIGHT FABRIC PANEL POWER 30" X 66"	797.00	797.00
					Customer	%71.72000
					225.39	225.39
			(B)	POWER BASE		
			.0F-	BASKETWEAVE	GRADE B	
			07M	BIRCH		
			.0F-	BASKETWEAVE	GRADE B	
			07M	BIRCH		
			.TR-	SURFACE 3		
			00J	GRAPHITE		
			.TR-	SURFACE 4		
			00J	GRAPHITE		
7	HGW	3	EFP-388-B	STRAIGHT FABRIC PANEL POWER 36" X 88"	866.00	2598.00
					Customer	%71.72000
					244.90	734.70
			(B)	POWER BASE		
			.0F-	BASKETWEAVE	GRADE B	
			07M	BIRCH		
			.0F-	BASKETWEAVE	GRADE B	
			07M	BIRCH		
			.TR-	SURFACE 3		
			00J	GRAPHITE		
			.TR-	SURFACE 4		
			00J	GRAPHITE		

NRC4500.SIF
NRC, OWFN, P1-17, Roland Wood

LIST\$ CUSTOMER% CUSTOMERS

4-5-2000
15:38:16

#	Mfg	Qty	Part #	Description / Options	Unit	Extended
8	HGW	1	EFP-4266-B	STRAIGHT FABRIC PANEL POWER 42" X 66"	923.00	923.00
					Customer	%71.72000
					261.02	261.02
			(B)	POWER BASE		
			.0F-	BASKETWEAVE	GRADE B	
			.07M	BIRCH		
			.0F-	BASKETWEAVE	GRADE B	
			.07M	BIRCH		
			.TR-	SURFACE 3		
			.00J	GRAPHITE		
			.TR-	SURFACE 4		
			.00J	GRAPHITE		
9	HGW	1	WRCS-324	90 DEG. CORNER WORK SURFACE W/O KEYBOARD PAD 36" X 24"	401.00	401.00
					Customer	%71.72000
					113.40	113.40
			(L)	STANDARD VERSION		
			.0H-	LAMINATE		
			.03E	SMOKE		
			.TR-	SURFACE 2		
			.00J	GRAPHITE		
			.TR-	SURFACE 3		
			.00J	GRAPHITE		
10	HGW	1	WS-3024	REGULAR WORK SURFACE 30" X 24"	257.00	257.00
					Customer	%71.72000
					72.68	72.68
			(L)	W/O GROMMET		
			.0H-	LAMINATE		
			.03E	SMOKE		
			.TR-	SURFACE 2		
			.00J	GRAPHITE		
			.TR-	SURFACE 3		
			.00J	GRAPHITE		
11	HGW	1	WS-524	REGULAR WORK SURFACE 60" X 24"	357.00	357.00
					Customer	%71.72000
					100.96	100.96
			(L)	W/O GROMMET		
			.0H-	LAMINATE		
			.03E	SMOKE		
			.TR-	SURFACE 2		
			.00J	GRAPHITE		
			.TR-	SURFACE 3		
			.00J	GRAPHITE		

NRC4500.SIF
NRC, OWEN, P1-17, Roland Wood

LIST\$ CUSTOMER% CUSTOMER\$

4-6-2000
15:36:15

#	Mfg	Qty	Part #	Description / Options	Unit	Extended
12	HGW	1	WS-4224	REGULAR WORK SURFACE 42" X 24"	291.00	291.00
					Customer	%71.72000
					82.29	82.29
			()	W/O GROMMET		
			.0H-	LAMINATE		
			.03E	SMOKE		
			.TR-	SURFACE 2		
			.00J	GRAPHITE		
			.TR-	SURFACE 3		
			.00J	GRAPHITE		
13	HGW	1	SR-30	REGULAR SHELF 30"	140.00	140.00
					Customer	%71.72000
					39.59	39.59
			.0V-	VIDENE		
			.03E	SMOKE		
			.TR-	SURFACE 2		
			.00E	SMOKE		
			.TR-	SURFACE 3		
			.00E	SMOKE		
14	HGW	1	SR-3	REGULAR SHELF 36"	144.00	144.00
					Customer	%71.72000
					40.72	40.72
			.0V-	VIDENE		
			.03E	SMOKE		
			.TR-	SURFACE 2		
			.00E	SMOKE		
			.TR-	SURFACE 3		
			.00E	SMOKE		
15	HGW	1	SRS-42	REGULAR SHELF 42"	148.00	148.00
					Customer	%71.72000
					41.85	41.85
			.0V-	VIDENE		
			.03E	SMOKE		
			.TR-	SURFACE 2		
			.00E	SMOKE		
			.TR-	SURFACE 3		
			.00E	SMOKE		

NRC4500.SIF
NRC, OWFN, P1-17, Roland Wood

LIST\$ CUSTOMER% CUSTOMER\$

4-5-2000
15:38:15

#	Mfg	Qty	Part #	Description / Options	Unit	Extended
16	HGW	1	FDRV-30	REG. FLIPPER DOOR - VIDENE 30"	259.00	259.00
					Customer	%71.72000
					73.25	73.25
			(L)	WITH LOCK		
			.HC-	HIGH PRESSURE LAMINATE		
			03E	SMOKE		
			.TR-	SURFACE 2		
			00J	GRAPHITE		
			.TR-	SURFACE 3		
			00J	GRAPHITE		
17	HGW	1	FDRV-3	REG. FLIPPER DOOR - VIDENE 36"	280.00	280.00
					Customer	%71.72000
					79.18	79.18
			(L)	WITH LOCK		
			.HC-	HIGH PRESSURE LAMINATE		
			03E	SMOKE		
			.TR-	SURFACE 2		
			00J	GRAPHITE		
			.TR-	SURFACE 3		
			00J	GRAPHITE		
18		1	FDRV-42		0.00	0.00
					Customer	%71.72000
					0.00	0.00
			(L)	WITH LOCK		
			.HC-	HIGH PRESSURE LAMINATE		
			03E	SMOKE		
			.TR-	SURFACE 2		
			00J	GRAPHITE		
			.TR-	SURFACE 3		
			00J	GRAPHITE		
19	HGW	1	HTL-0030-T	TASK LIGHT 30"	177.00	177.00
					Customer	%71.72000
					50.06	50.06
			(T)	T-8 OCTIC		
			.TR-	SURFACE 1		
			00E	SMOKE		
20	HGW	1	HTL-0036-T	TASK LIGHT 36"	187.00	187.00
					Customer	%71.72000
					52.88	52.88
			(T)	T-8 OCTIC		
			.TR-	SURFACE 1		
			00E	SMOKE		

NRC4500.SIF
NRC, OWFN, P1-17, Roland Wood

LIST\$ CUSTOMER% CUSTOMER\$

4-5-2000
15:38:15

#	Mfg	Qty	Part #	Description / Options	Unit	Extended
21	HGW	1	HTL-0042-T	TASK LIGHT 42"	190.00	190.00
					Customer	%71.72000
					53.73	53.73
			(T) .TR- 00E	T-8 OPTIC SURFACE 1 SMOKE		
22	HGW	1	HTB-3018	TACKBOARD 30" X 16"	140.00	140.00
					Customer	%71.72000
					39.59	39.59
			.OL- OLC	PINPOINT TEAL PATINA	GRADE A	
23	HGW	1	HTB-3818	TACKBOARD 36" X 16"	145.00	145.00
					Customer	%71.72000
					41.01	41.01
			.OL- OLC	PINPOINT TEAL PATINA	GRADE A	
24	HGW	1	HTB-4218	TACKBOARD 42" X 16"	154.00	154.00
					Customer	%71.72000
					43.55	43.55
			.OL- OLC	PINPOINT TEAL PATINA	GRADE A	
25	HGW	1	AKPT-3	AKP - TILTING KEYBOARD PAD W/O PALM REST	361.00	361.00
					Customer	%71.72000
					102.09	102.09
			.TR- 00K	SURFACE 1 CHARCOAL		
26	HGW	1	HMP-3	MOUSE PAD - ADJUSTABLE HEIGHT	190.00	190.00
					Customer	%71.72000
					53.73	53.73
27	HGW	1	PPD-18	PENCIL DRAWER	59.00	59.00
					Customer	%71.72000
					16.69	16.69

Totals
List 11379.00
Customer 3217.96
Customer% 71.72019

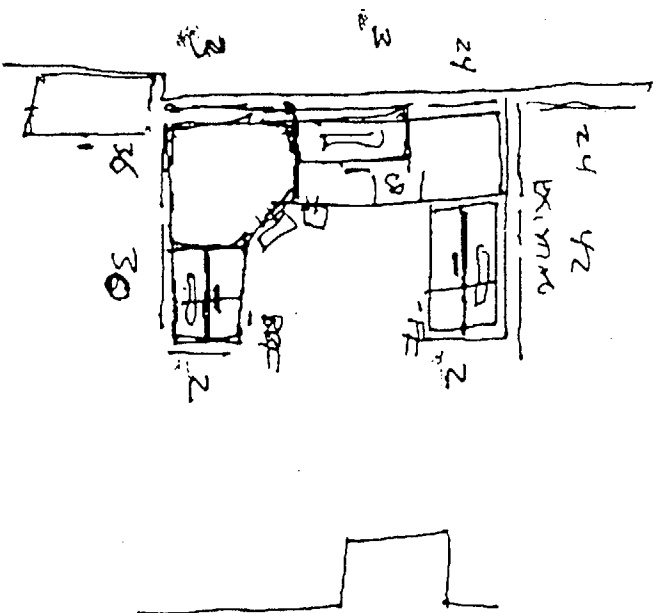
ectSpec (tm)

P 1-17

NAL
OWFN

Robert Wood
Rouard Wood

3-31-00



new:

- (1) RAO-3-B
 - (4) RFP-66-B
 - (2) EFN-46-B
 - (2) EFP-266-B
 - (1) EFP-3066-B
 - (3) EFP-366-B
 - (1) EFP-4266-B
 - (1) EFM-1-B
 - (1) WACS-324
 - (1) WS-3024
 - (1) WS-524
 - (1) WS-4224
 - (1) 36 W
 - (1) 36 W
 - (1) 42 W
- ONE
Buck
- COCONG
- (1) ANA-3
- (1) RMP-1
- FDNA-30
- HTL-0030
- HTS-3016
- FDNA-36
- HTL-0036
- HTS-3616
- FDNA-42
- HTL-0042
- HTS-4216