



ROY R. CELLAN
CORPORATE MANAGER
RECLAMATION

ENVIRONMENTAL, HEALTH, SAFETY
AND GOVERNMENT AFFAIRS

March 21, 2000

Mr. Ken Hooks, Project Manager
Uranium Recovery and Low Level Waste Branch
Division of Waste Management, MS 7E-47
Office of Nuclear Material Safety and Safeguards
11555 Rockville Pike
Rockville, MD 20852

Re: **Docket No. 40-8903**
License No. SUA-1471
Presentation Materials

Dear Mr. Hooks:

Pursuant to your request, please find a copy of the presentation materials used during the meeting at Homestake Mining Company's Grants site office on March 7th.

As agreed, I have also provided the same materials to Ms. Petra Sanchez of the EPA and to the Ms. Mary Heather Nobel from the NM ED.

If you have any additional questions regarding this information, please contact me at the Grants site, 505-287-4456. Thank you.

Sincerely,

Cc: Ms. Petra Sanchez, EPA
Ms. Mary Heather Nobel, NM ED



SCALE: 1"=1600'

HOMESTEAK-MILL-AND-ADJACENT-PROPERTIES GRANTS-NM-TOWNSHIP-11&12-N-RANGE-10-W

DATE: 03/14/2000

LIMITS OF ALLUVIAL AQUIFER AND WELL LOCATIONS

13\DOS\9906\

ACL\FLOW

page

01

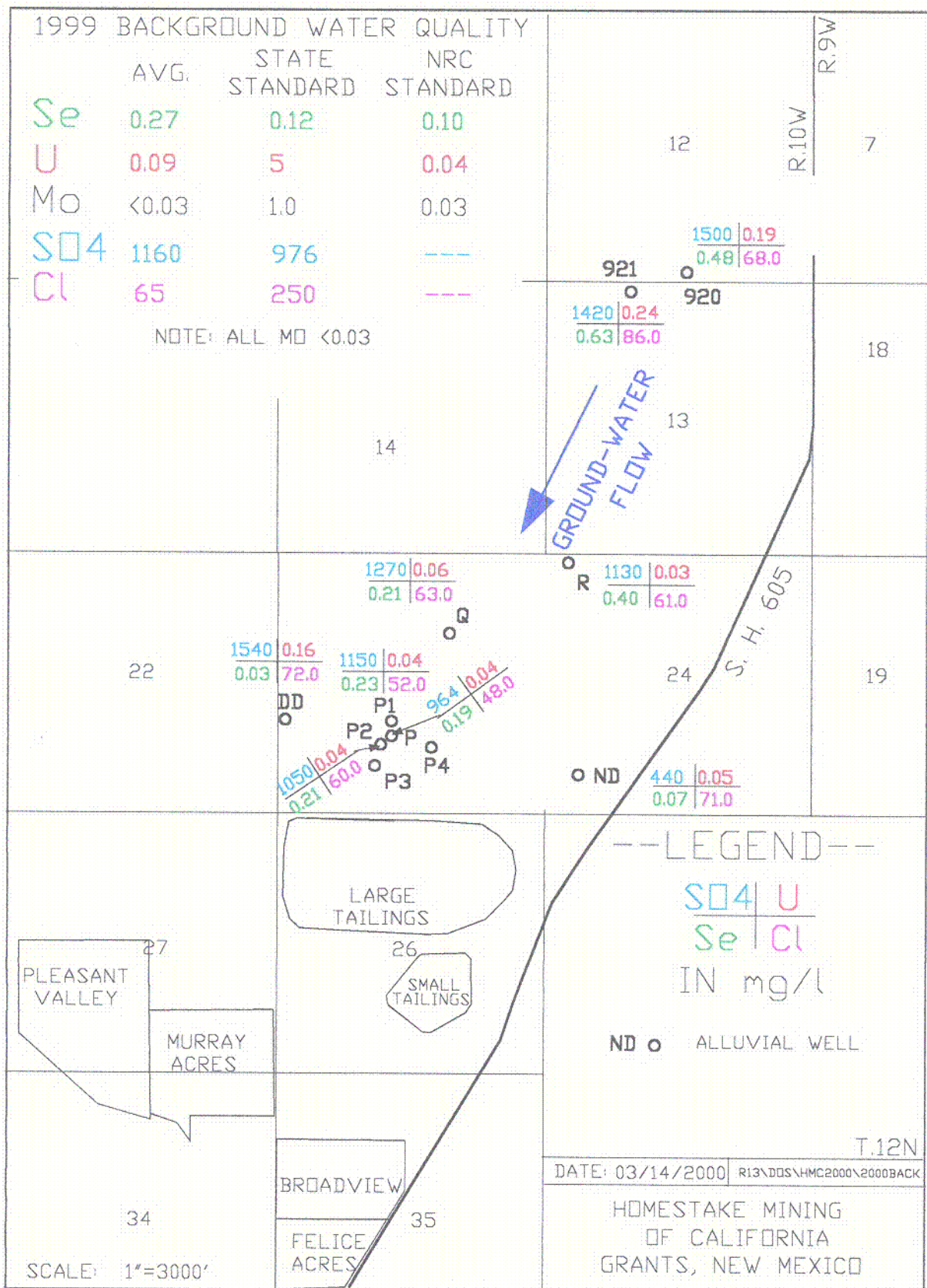


FIGURE 3.2-1. BACKGROUND GROUND-WATER QUALITY

GRANTS PROJECT WATER QUALITY STANDARDS

CONSTITUENTS HOMESTAKE STANDARDS

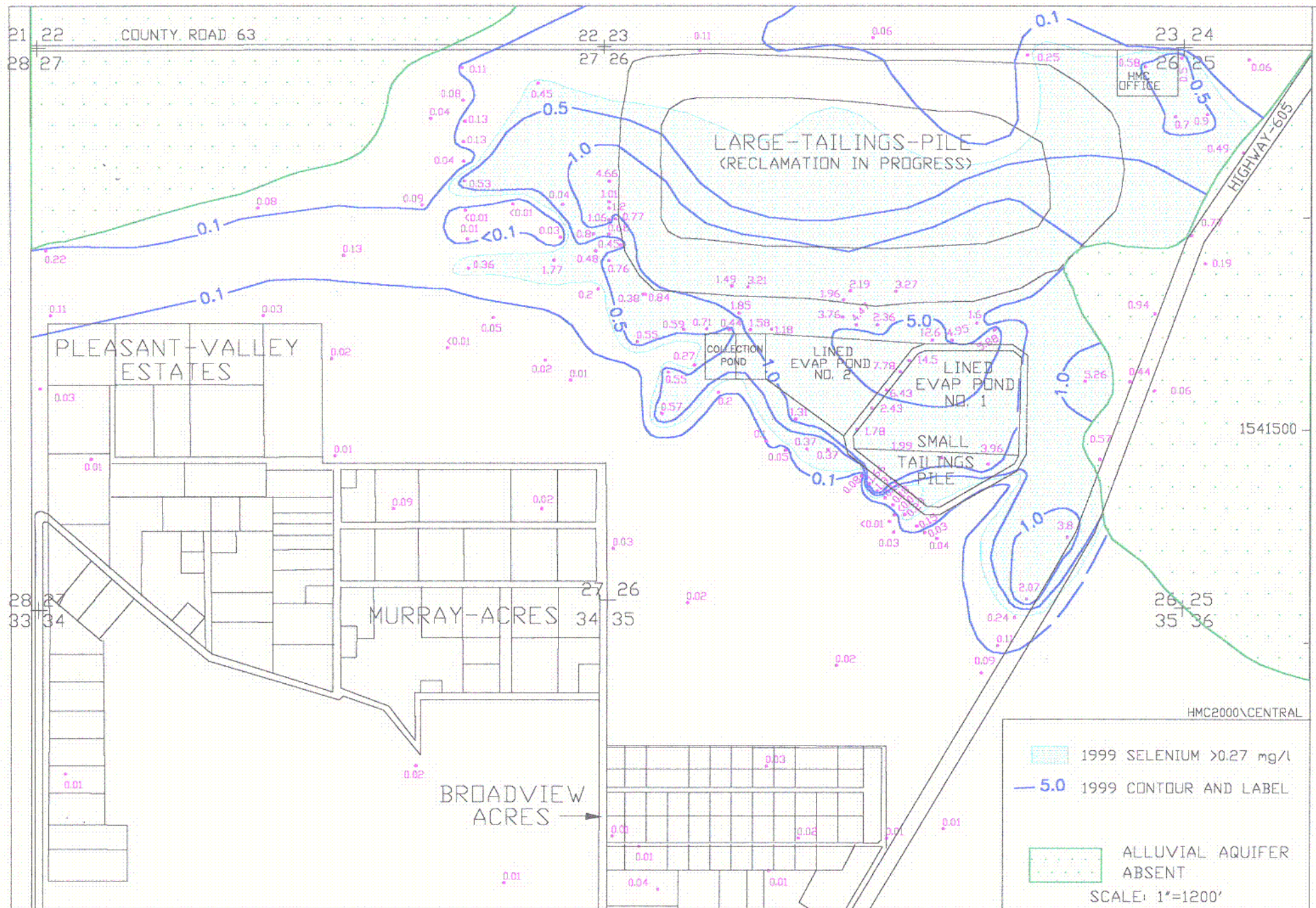
	<u>NRC</u>	<u>NEW MEXICO</u>
URANIUM	0.04	5
SELENIUM	0.1	0.12
MOLYBDENUM	0.03	1.0@
VANADIUM	0.02	-----
RA-226 + RA-228	5	30
THORIUM-230	0.3	-----
SULFATE	-----	976
CHLORIDE	-----	250
TDS	-----	1770
NITRATE	-----	12.4

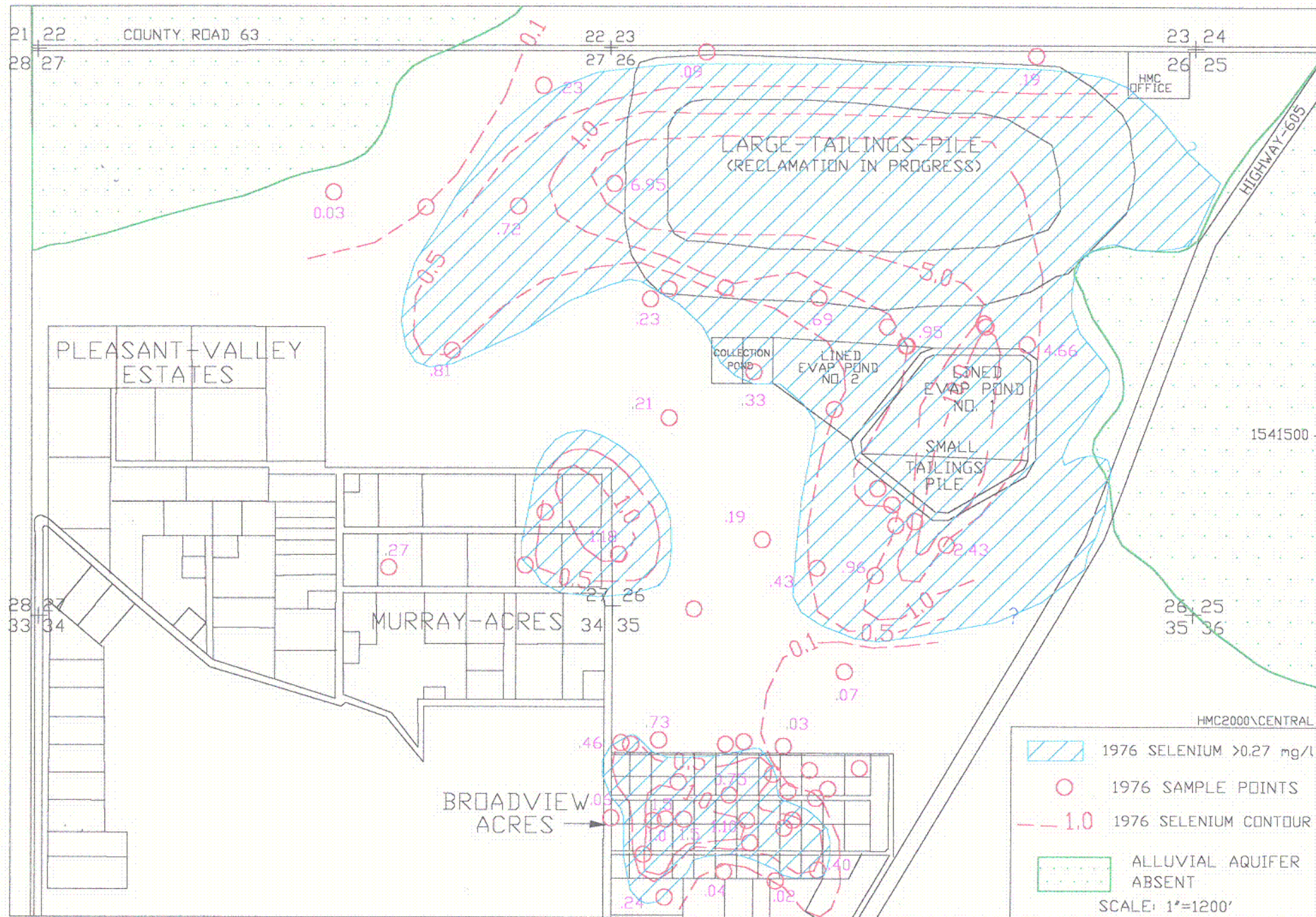
NOTE: All concentrations are in mg/l except: Ra-226 + Ra-228
and TH-230 are in pCi/l.
@ = Irrigation Standard

COMPARISON OF 1999 BACKGROUND WATER QUALITY AND SITE STANDARDS

CONSTITUENTS	1999 AVERAGE BACKGROUND ²	STATE STANDARD	NRC STANDARD ³
SELENIUM	0.27	0.12	0.1
URANIUM	0.09	5	0.04
MOLYBDENUM	<0.03	1.0@	0.03
SULFATE	1160	976	-----
CHLORIDE	65	250	-----
TDS	2050	1770	-----
VANADIUM	<0.01	-----	0.02
THORIUM-230	<0.2	-----	0.3
RA-226 + RA-228	<1.6	30	5
NITRATE	8.3	12.4	-----

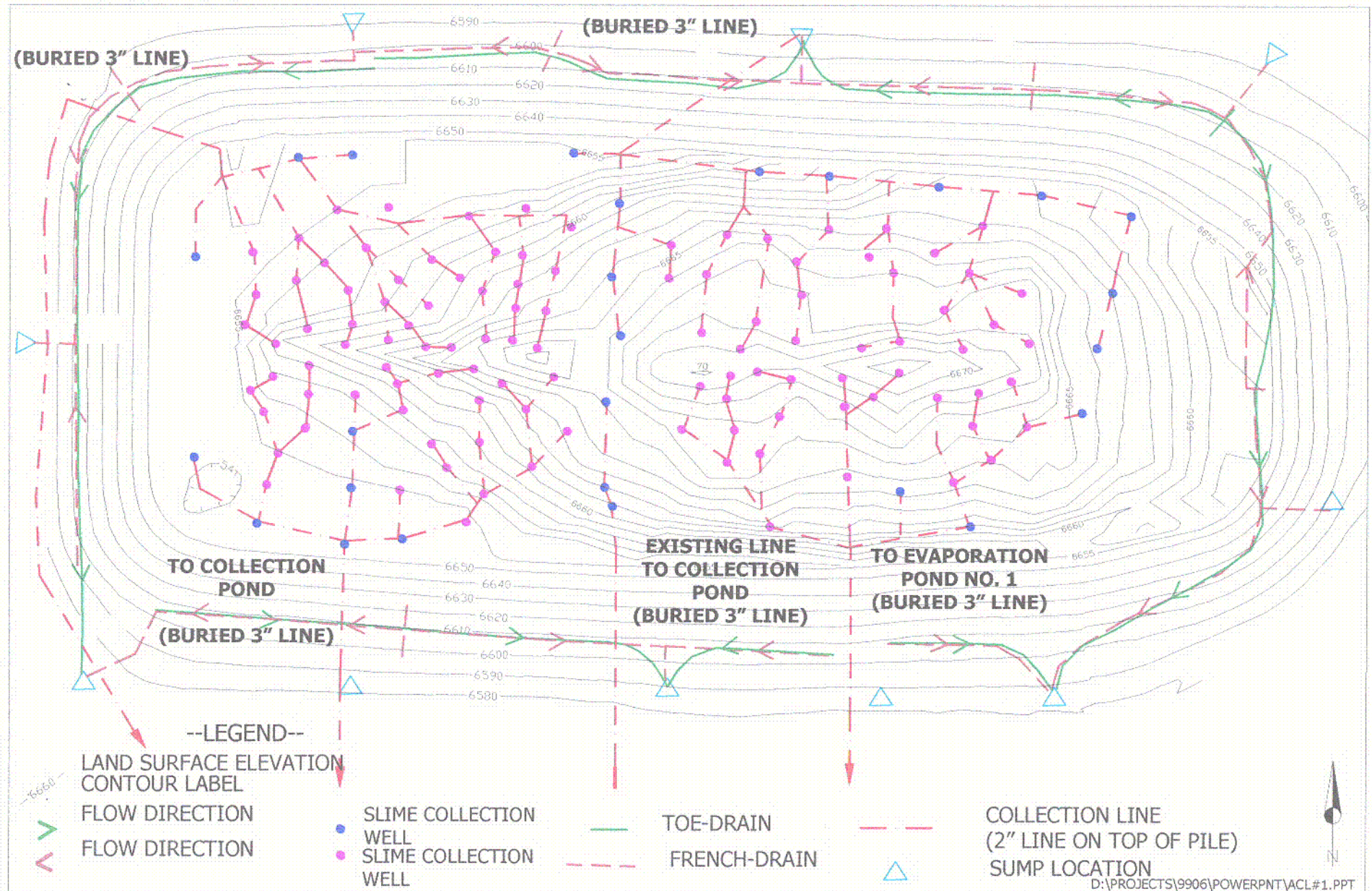
NOTE: ² Wells DD, ND, P, P1, P2, P3, P4, Q, R, 920 and 921
³ Average of 3 samples from well P in 1988 and 1989
 @ = Irrigation Standard



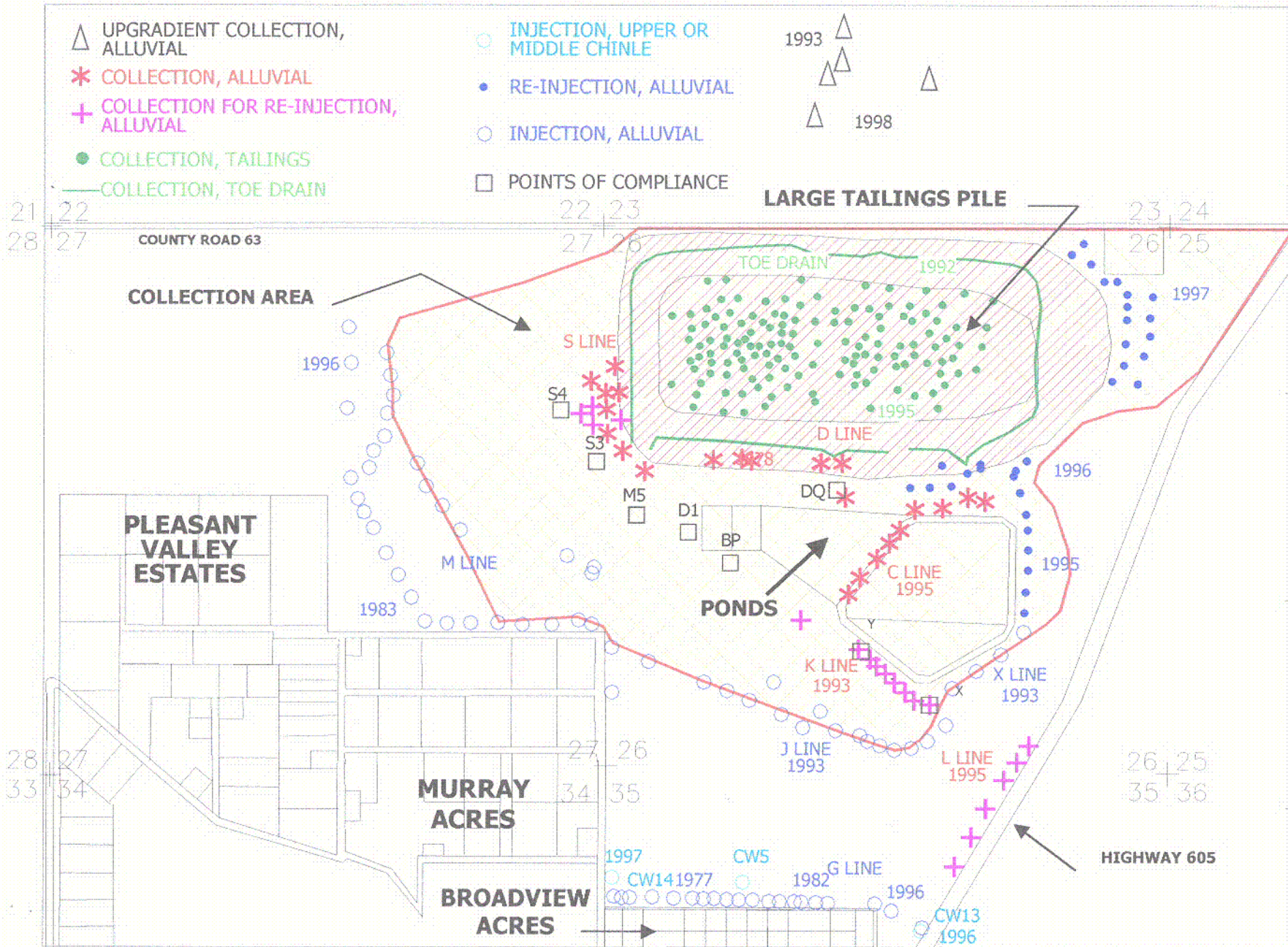


LOCATIONS OF TAILINGS DEWATERING WELLS, TOE DRAINS AND SUMPS

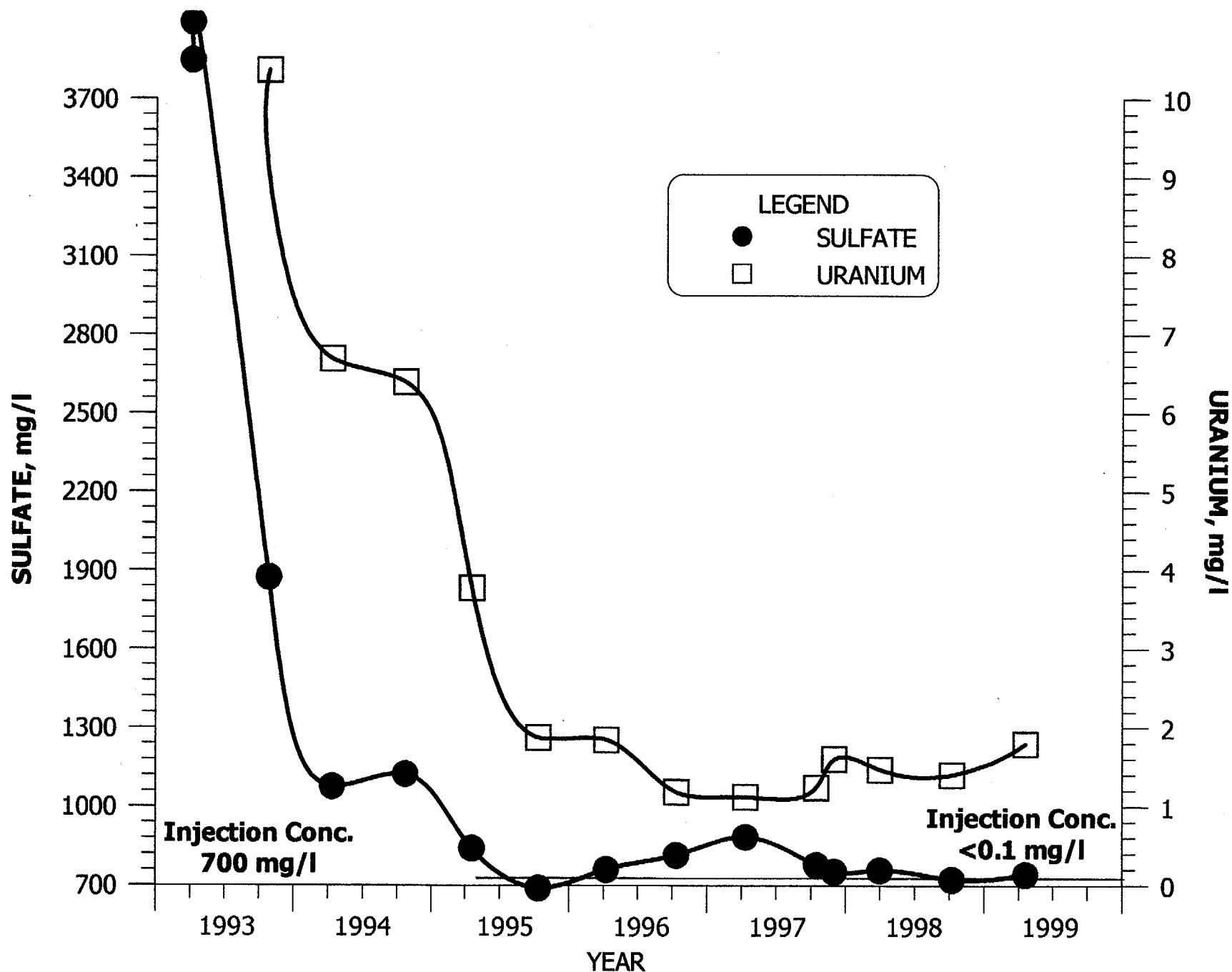
COUNTY ROAD 63



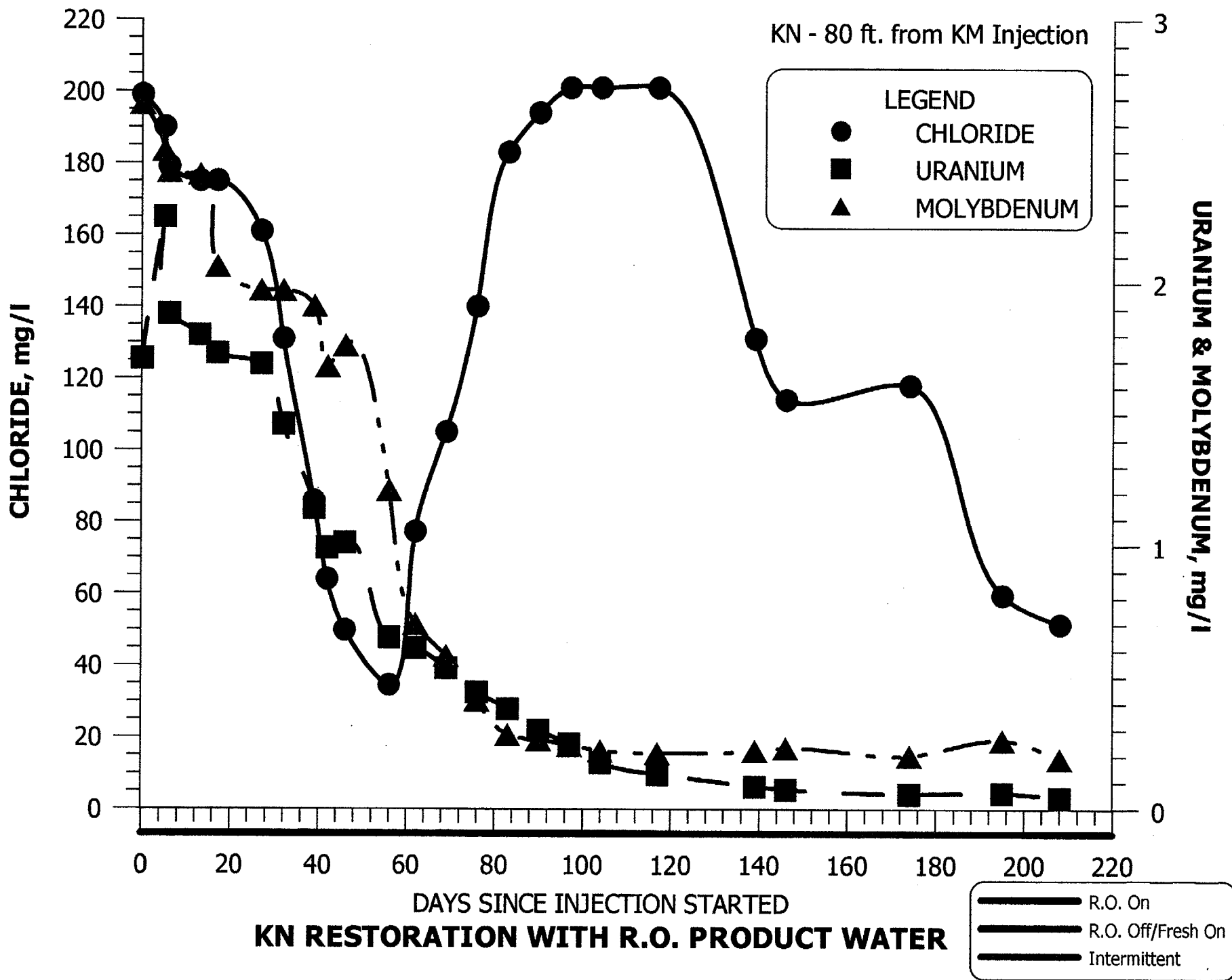
--LEGEND--



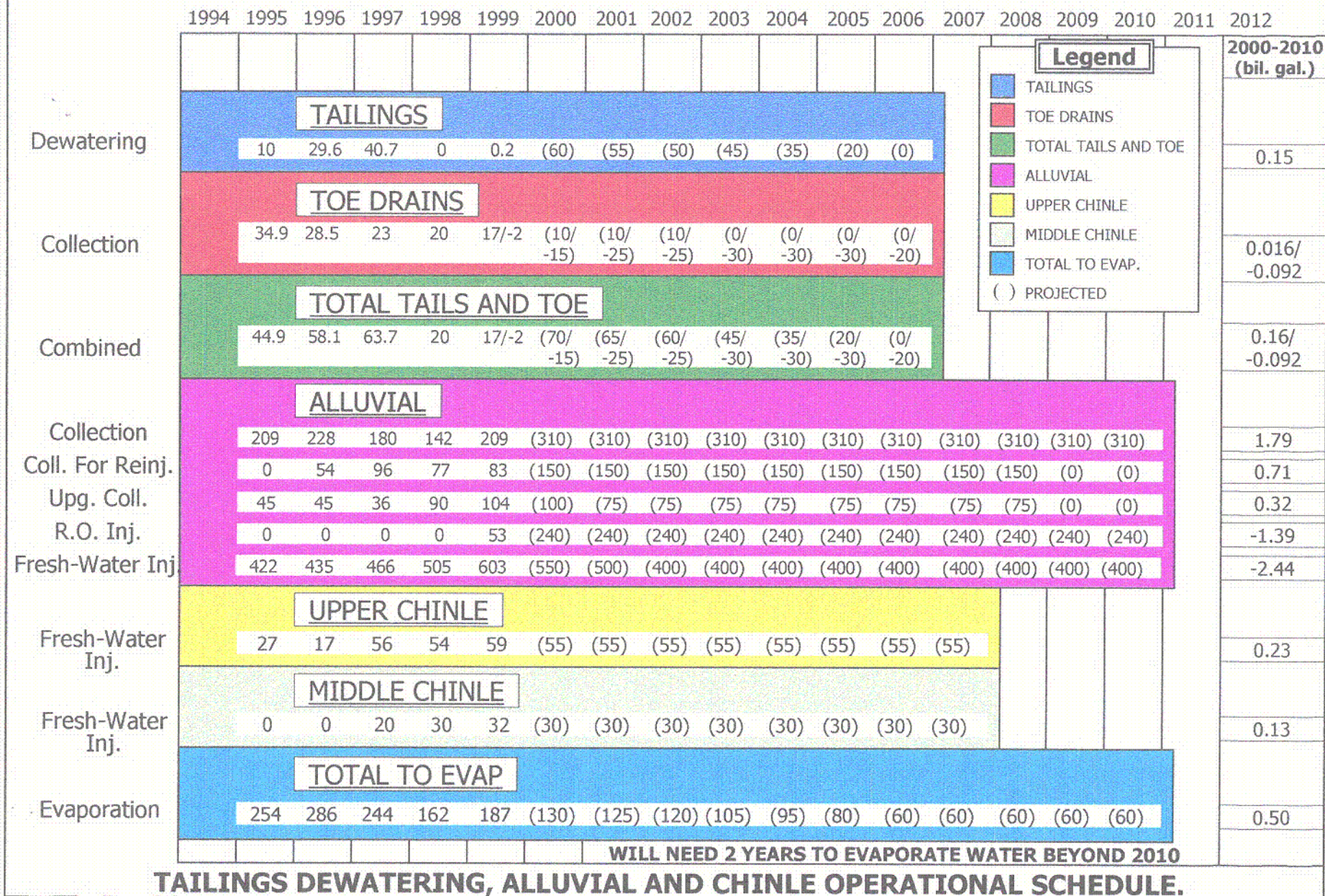
LOCATIONS OF PRESENT INJECTION AND COLLECTION SYSTEMS WITH START OF OPERATION DATES



KM RESTORATION WITH FRESH WATER.



HOMESTAKE RESTORATION RATES **Actual/(proj.) GPM** **Scenario #1**



Legend

TAILINGS

TOE DRAINS

TOTAL TAILS AND TOE

ALLUVIAL

UPPER CHINLE

MIDDLE CHINLE

TOTAL TO EVAP.

() PROJECTED

HOMESTAKE RESTORATION RATES **Actual/(proj.) GPM** **Scenario #2**

