

---

---

# Plant Performance Update Meeting

*May 2, 2000*



## McGuire Nuclear Station

# Agenda

---

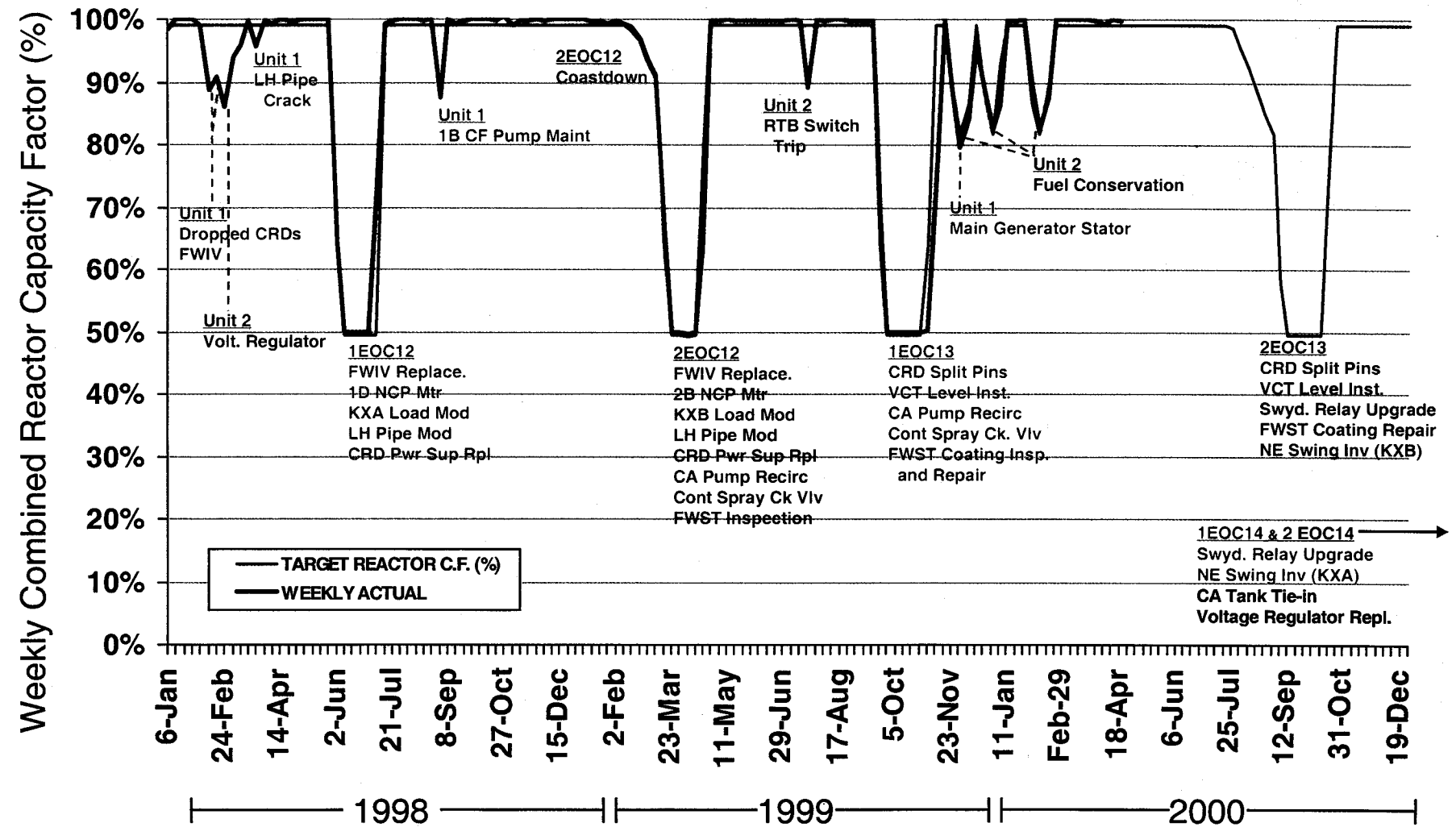
---

- **Overview - *Brew Barron***
  - 3 Year Power History
  - Performance Indicators
- **Station Performance - *Dhiaa Jamil***
  - Power History and Plans
  - Human Performance Activities
- **Engineering Issues - *Jack Peele***
  - Current Challenges
  - Planned Modifications
  - ISFSI
- **Corrective Actions - *Bryan Dolan***

# McGuire Nuclear Station

## GENERATION STATUS TRENDING

1998 - 2000 Actual vs. Target



# NRC Performance Indicators

#	NRC Performance Indicator	Unit 1		Unit 2	
Initiating Events:					
IE-1	Unplanned Scrams Per 7000 Critical Hours (automatic & manual during previous 4 quarters)	0 (Green)	↔	0.83 (Green)	↔
IE-2	Scrams with a Loss of Normal Heat Removal (over the previous 12 quarters)	1 (Green)	↔	1 (Green)	↔
IE-3	Unplanned Power Reductions (Transients) per 7000 Critical Hours (over previous 4 quarters)	0 (Green)	↔	0 (Green)	↔
Mitigating Systems:					
MS-1	Safety System Unavailability (SSU) - Emergency Power (average of previous 12 Quarters)	0.70% (Green)	↔	1.50% (Green)	↔
MS-2	Safety System Unavailability (SSU) - High Pressure Safety Injection (average of previous 12 Quarters)	0.77% (Green)	↔	0.76% (Green)	↔
MS-3	Safety System Unavailability (SSU) - Auxiliary Feedwater (average of previous 12 Quarters)	0.67% (Green)	↔	0.67% (Green)	↔
MS-4	Safety System Unavailability (SSU) - Residual Heat Removal (average of previous 12 Quarters)	0.95% (Green)	↔	1.04% (Green)	↔
MS-5	Safety System Functional Failures (over previous 4 Quarters)	0 (Green)	↔	0 (Green)	↔
Barrier Integrity:					
BI-1	Reactor Coolant System (RCS) Specific Activity (maximum monthly values, % of Tech. Spec. Limit, during previous 4 Qtrs.)	0.03% (Green)	↔	0.05% (Green)	↔
BI-2	RCS Identified Leak Rate (maximum monthly values, % of Tech. Spec. Limit, during previous 4 Qtrs.)	1.88% (Green)	↔	2.23% (Green)	↔

# NRC Performance Indicators

<b>Emergency Preparedness:</b>					
EP-1	Drill/Exercise Performance (over previous 8 Qtrs.)	95.40% (Green)	↔	95.40% (Green)	↔
EP-2	ERO Drill Participation (% of Key ERO personnel that participated in a drill or exercise in the previous 8 quarters)	97.10% (Green)	↔	97.10% (Green)	↔
EP-3	Alert & Notification System Reliability (% reliability during previous 4 quarters)	95.70% (Green)	↔	95.70% (Green)	↔
<b>Occupational Radiation Safety:</b>					
OR-1	Occupational Exposure Control Effectiveness (occurrences during previous 12 Qtrs.)	2 (Green)	↔	2 (Green)	↔
<b>Public Radiation Safety:</b>					
PR-1	RETS/ODCM Radiological Effluent Occurrence (occurrences during previous 4 Qtrs.)	0 (Green)	↔	0 (Green)	↔
<b>Physical Protection:</b>					
PP-1	Protected Area Security Equipment Performance Index (over a 4 quarter period)	0.018 (Green)	↔	0.018 (Green)	↔
PP-2	Personnel Screening Program Performance (reportable events during previous 4 Qtrs.)	0 (Green)	↔	0 (Green)	↔
PP-3	Fitness-For-Duty (FFD)/Personnel Reliability Program Performance (reportable events during previous 4 Qtrs.)	0 (Green)	↔	0 (Green)	↔
Acceptable Performance		Increased Regulatory Response		Required Regulatory Response	

Improving



Degrading



Unchanged



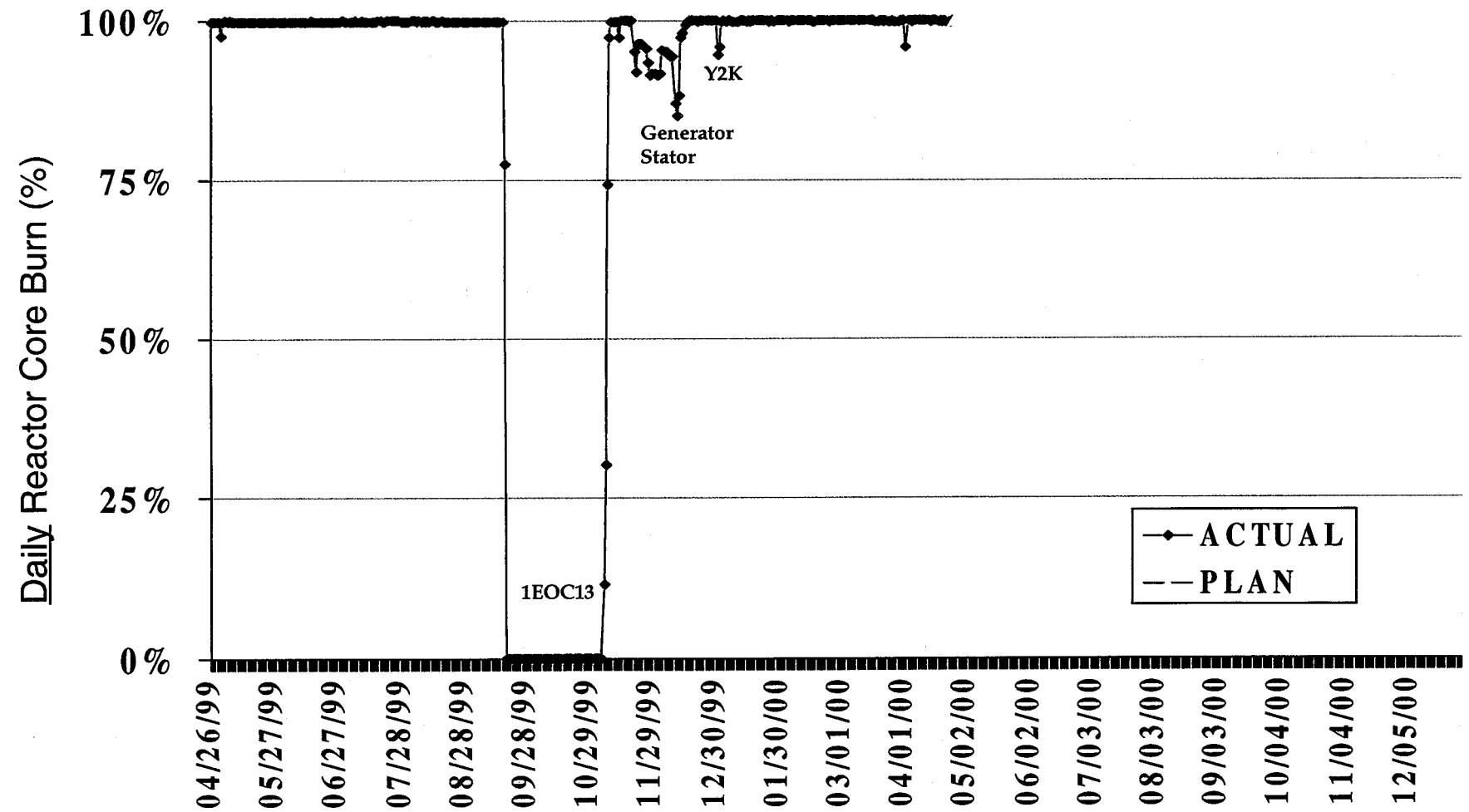
---

---

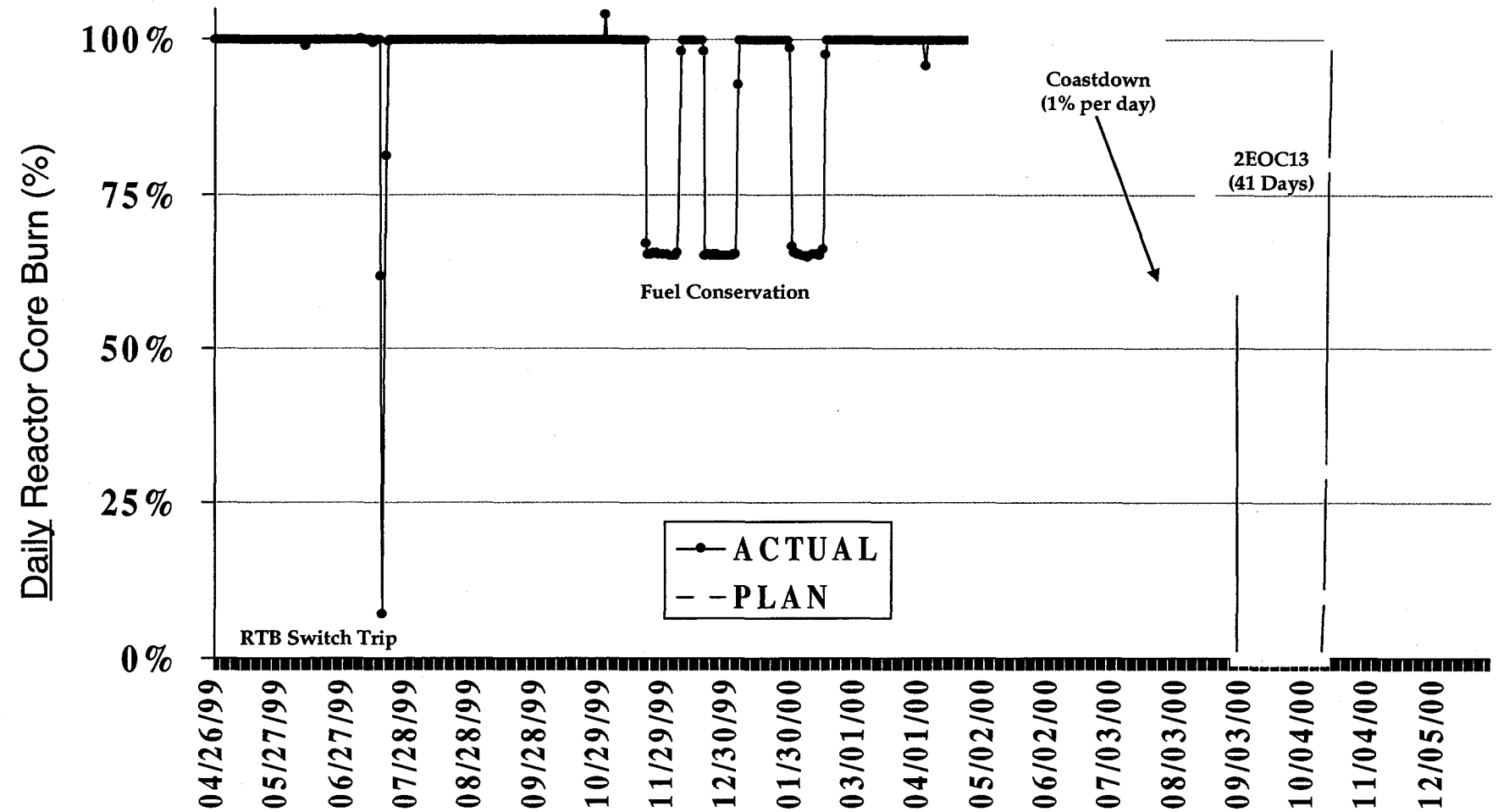
# Station Performance

**Power History and Plans**  
**Human Performance Activities**

McGuire Nuclear Station  
**REACTOR CORE BURN - UNIT 1**  
Actual 12 Months Ending April 25, 2000

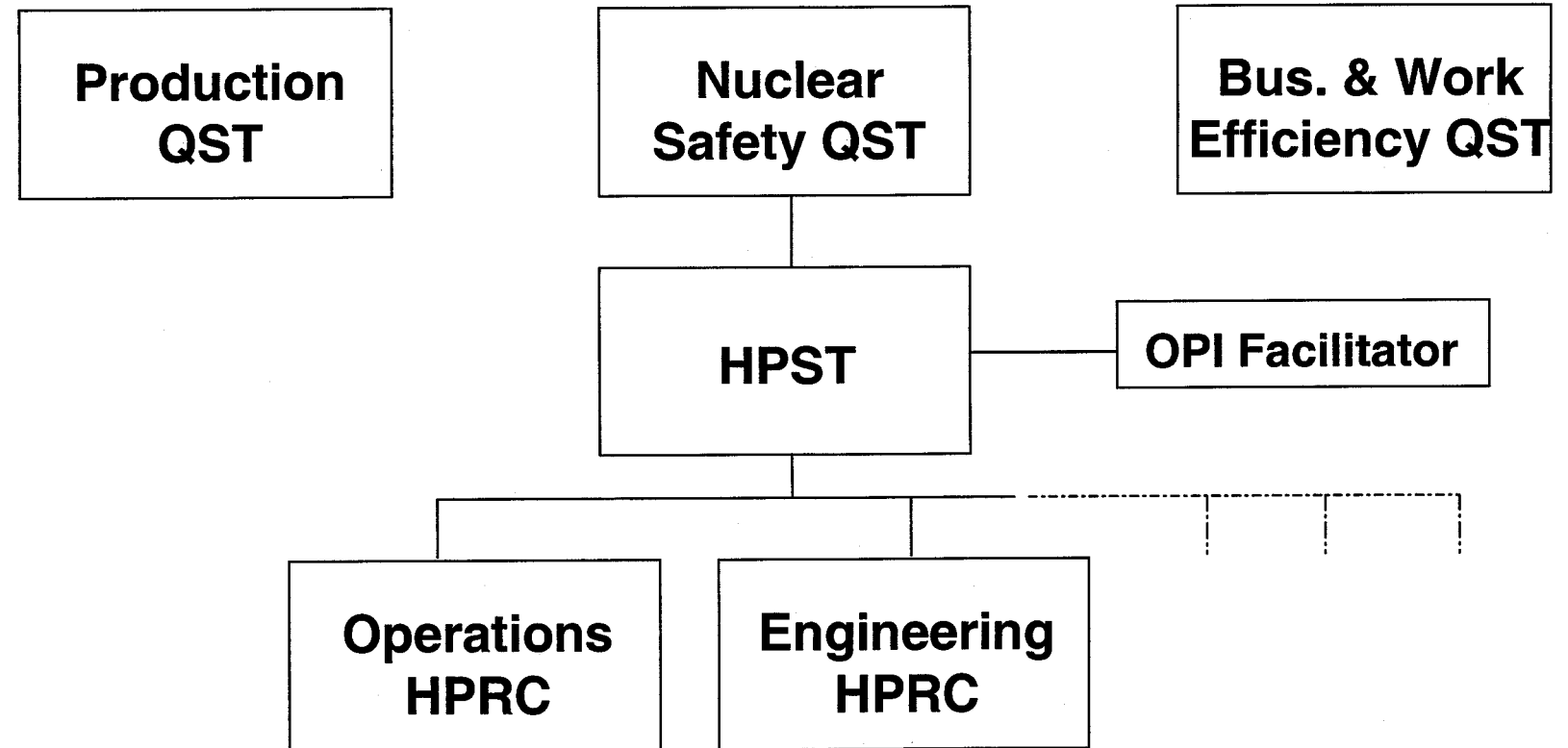


McGuire Nuclear Station  
**REACTOR CORE BURN - UNIT 2**  
Actual 12 Months Ending April 25, 2000





# McGuire Human Performance Oversight Structure



**QST** - Quality Steering Team  
**HPST** - Human Performance Steering Team  
**HPRC** - Human Performance Review Committee  
**OPI** - Organizational Performance Improvement

rs &

=====