



ROY R. CELLAN
CORPORATE MANAGER
RECLAMATION

ENVIRONMENTAL, HEALTH, SAFETY
AND GOVERNMENT AFFAIRS

February 25, 2000

Mr. Ken Hooks
Program Manager
High Level Waste and Uranium
Recovery Projects Branch MST-7-J-9
Division of Waste Management
11555 Rockville Pike
Rockville, MD 20852

Re: Docket No. 40-8903
License No. SAU-1471
Up-date of Table 2 - Groundwater Monitoring Program (8-97)
Revised Figures 7, 15, 16, 17, 22, 23, 24, and 31

Dear Mr. Hooks:

Enclosed are two copies of revised trend analysis figures to replace the above referenced figures that were submitted with the September 29, 1999 proposal to up-date Table 2. The previously submitted figures were graphs created from excel files that had not been ordered chronologically. The dates corresponded to the correct concentration data but were not sorted chronologically along the X axis. The revised figures have been corrected to show concentration data chronologically along the X axis. The trends in the revised figures still show the same general decline of concentrations over time. The most recent concentrations illustrated by these figures are below NRC and State site standards. Therefore the monitoring wells associated with these figures are proposed to be eliminated from the Table 2 monitoring requirements.

If you have any further questions about the September 1999 proposal or these figures, don't hesitate to give me a call.

Sincerely,

Ronald A. Waterhouse
for

Roy R. Cellan

Enclosures

Cc: Mary Heather Noble, NMED w/figures

HOMESTAKE MINING COMPANY

P.O. BOX 98
GRANTS, NEW MEXICO 87020
(505) 287-4456

February 25, 2000

Ms. Mary Heather Noble
State Of New Mexico
Environmental Department
Ground Water Section
1190 St. Francis Drive
Santa Fe, New Mexico 87503

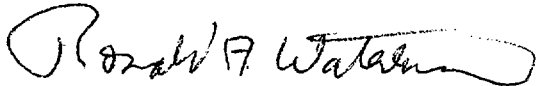
Re: DP-200
Up-date of Table 2 - Groundwater Monitoring Program (8-97)
Revised Figures 7, 15, 16, 17, 22, 23, 24, and 31

Dear Ms. Noble:

It has come to our attention that some of the figures that were submitted with the September 23, 1999 supplement to our proposal to up-date Table 2 had data that was not ordered chronologically along the X axis. Enclosed are copies of revised trend analysis figures to replace the above referenced figures. The previously submitted figures were graphs created from excel files that had not been ordered chronologically. The dates corresponded to the correct concentration data but were not sorted chronologically along the X axis. The revised figures have been corrected to show concentration data chronologically along the X axis. The trends in the revised figures still show the same general decline of concentrations over time. The most recent concentrations illustrated by these figures are below NRC and State site standards. Therefore the monitoring wells associated with these figures are proposed to be eliminated from the Table 2 monitoring requirements.

If you have any further questions about the September 1999 proposal or these figures, don't hesitate to give me a call.

Sincerely,



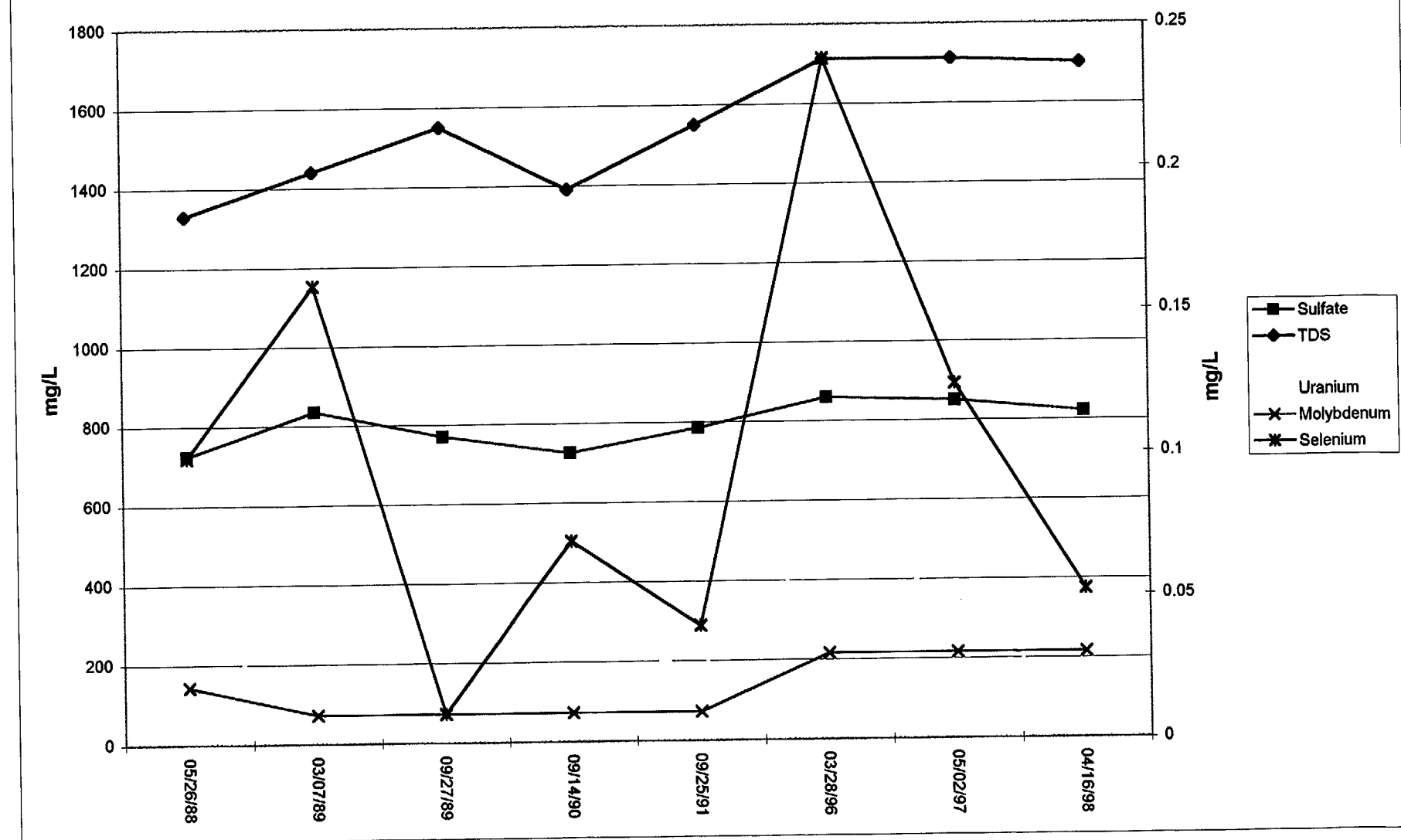
Ronald A. Waterland
Environmental Project Supervisor

Enclosures

Cc: Mr. Ken Hooks, , NRC w/figures

An Equal Opportunity Employer

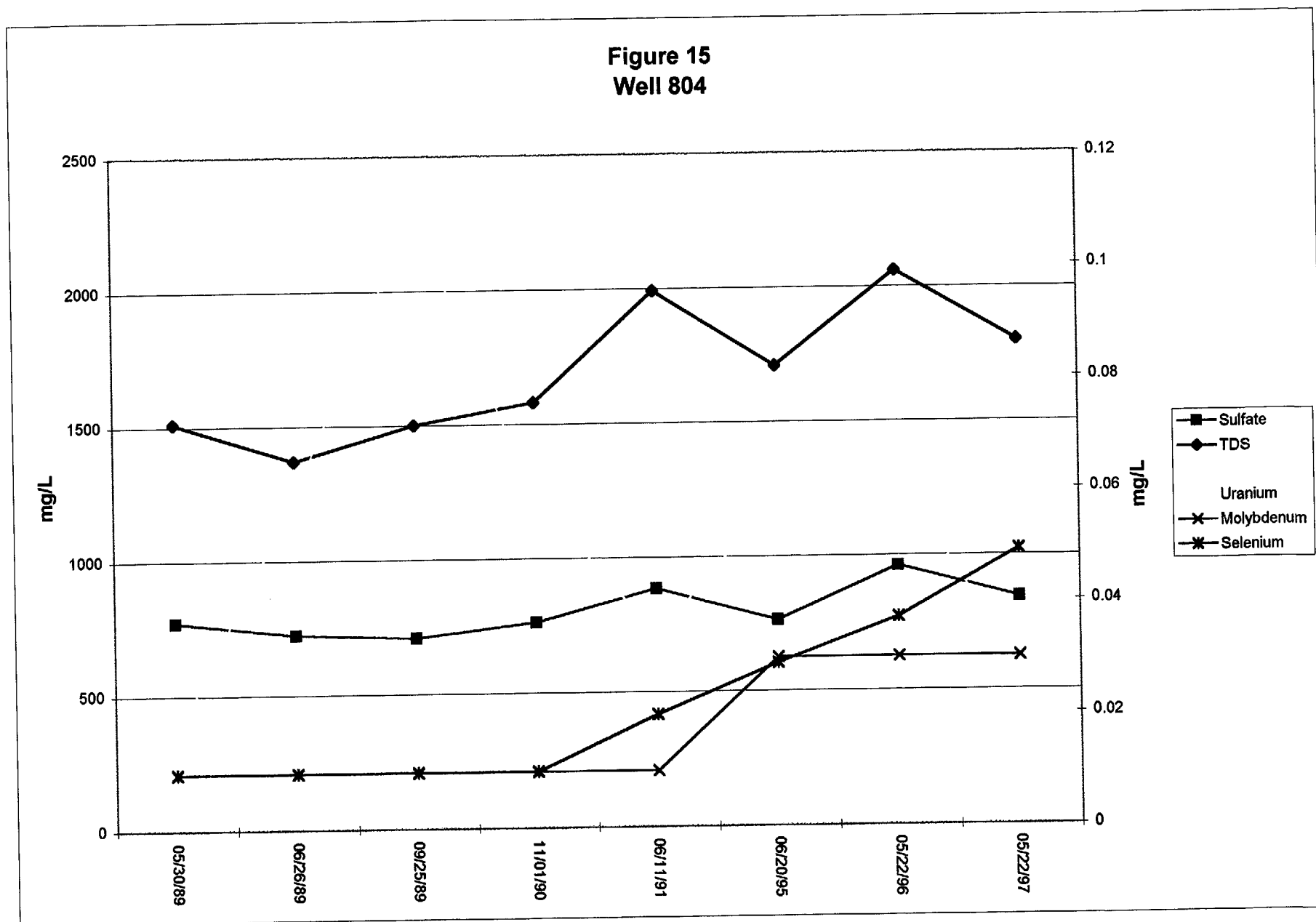
Figure 7
Well 0434



NRC Site Standards: Se: 0.10 , U: 0.04, Mo: 0.03
 NM Standards: Se: 0.12, U: 5.0, SO₄: 976, TDS: 1770, Mo: 1.0

SO₄ TDS - left axis
 U, Mo, Se - right axis

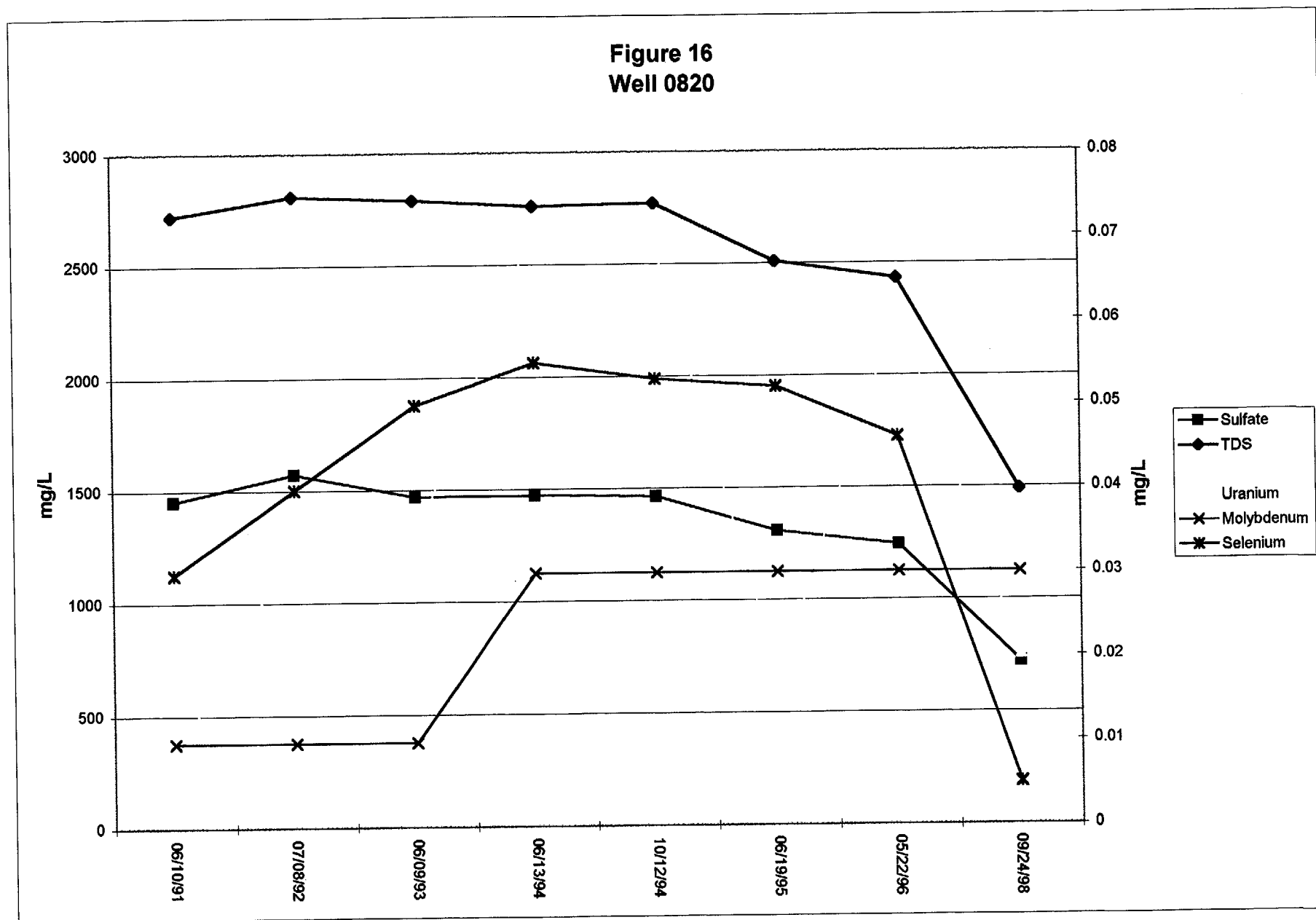
Figure 15
Well 804



NRC Site Standards: Se: 0.10, U: 0.04, Mo: 0.03
 NM Standards: Se: 0.12, U: 5.0, SO₄: 976, TDS: 1770, Mo: 1.0

SO₄, TDS - left axis
 U, Mo, Se - right axis

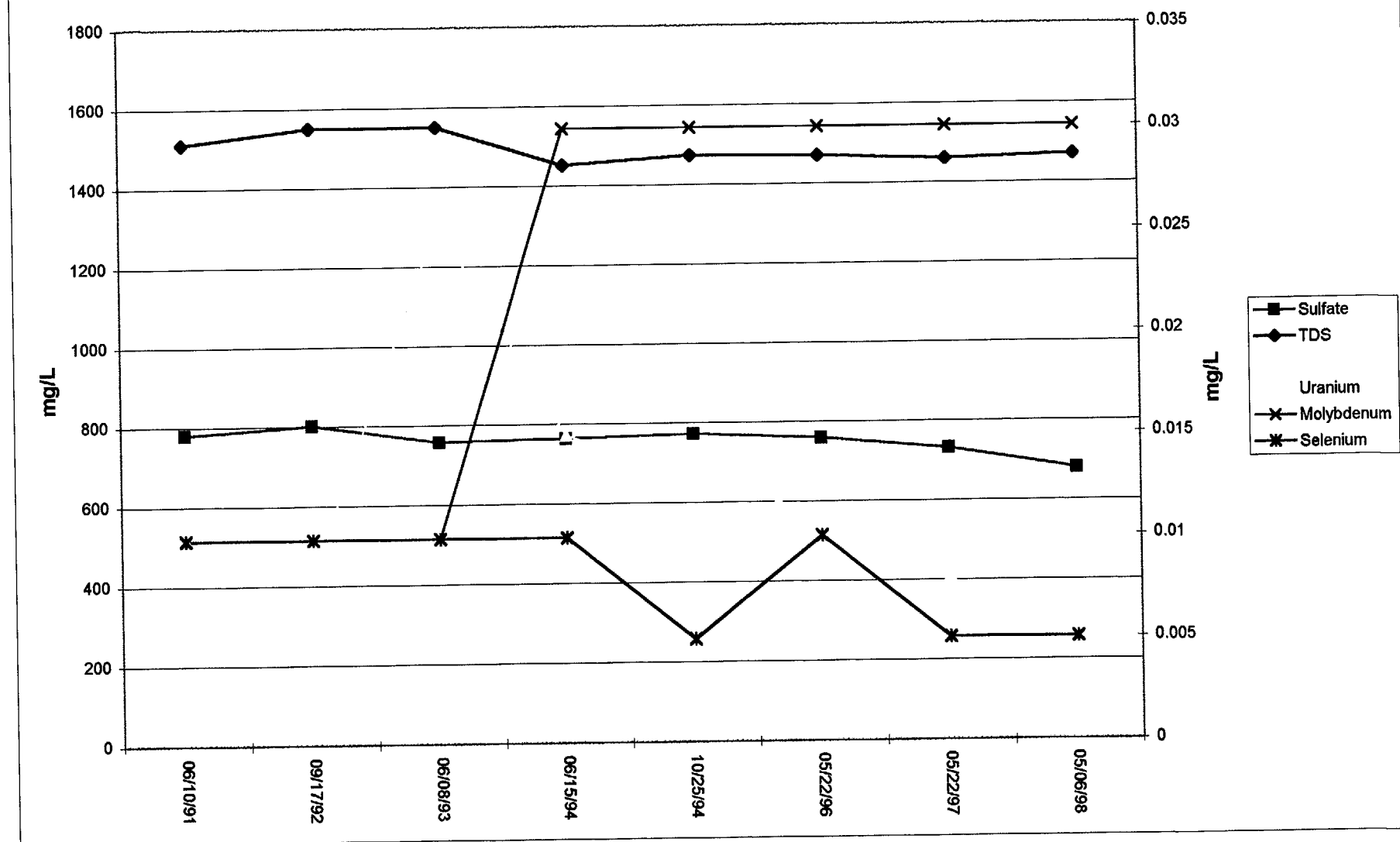
Figure 16
Well 0820



NRC Site Standards: Se: 0.10, U: 0.04, Mo: 0.03
 NM Standards: Se: 0.12, U: 5.0, SO₄: 976, TDS: 1770, Mo: 1.0

SO₄, TDS - left axis
 U, Mo, Se - right axis

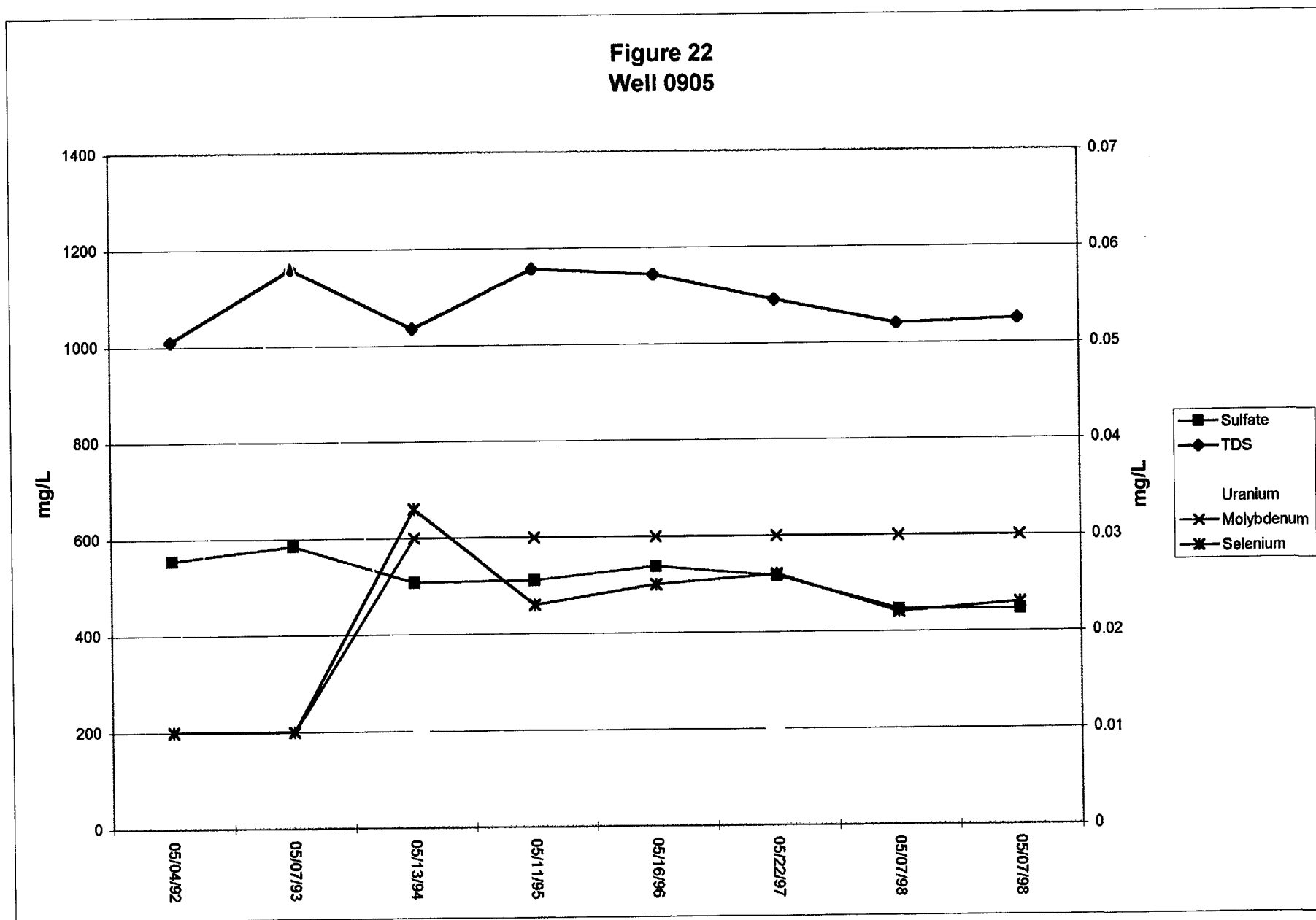
Figure 17
Well WCW



NRC Site Standards: Se: 0.10, U: 0.04, Mo: 0.03
 NM Standards: Se: 0.12, U: 5.0, SO₄: 976, TDS: 1770, Mo: 1.0

SO₄, TDS - left axis
 U, Mo, Se - right axis

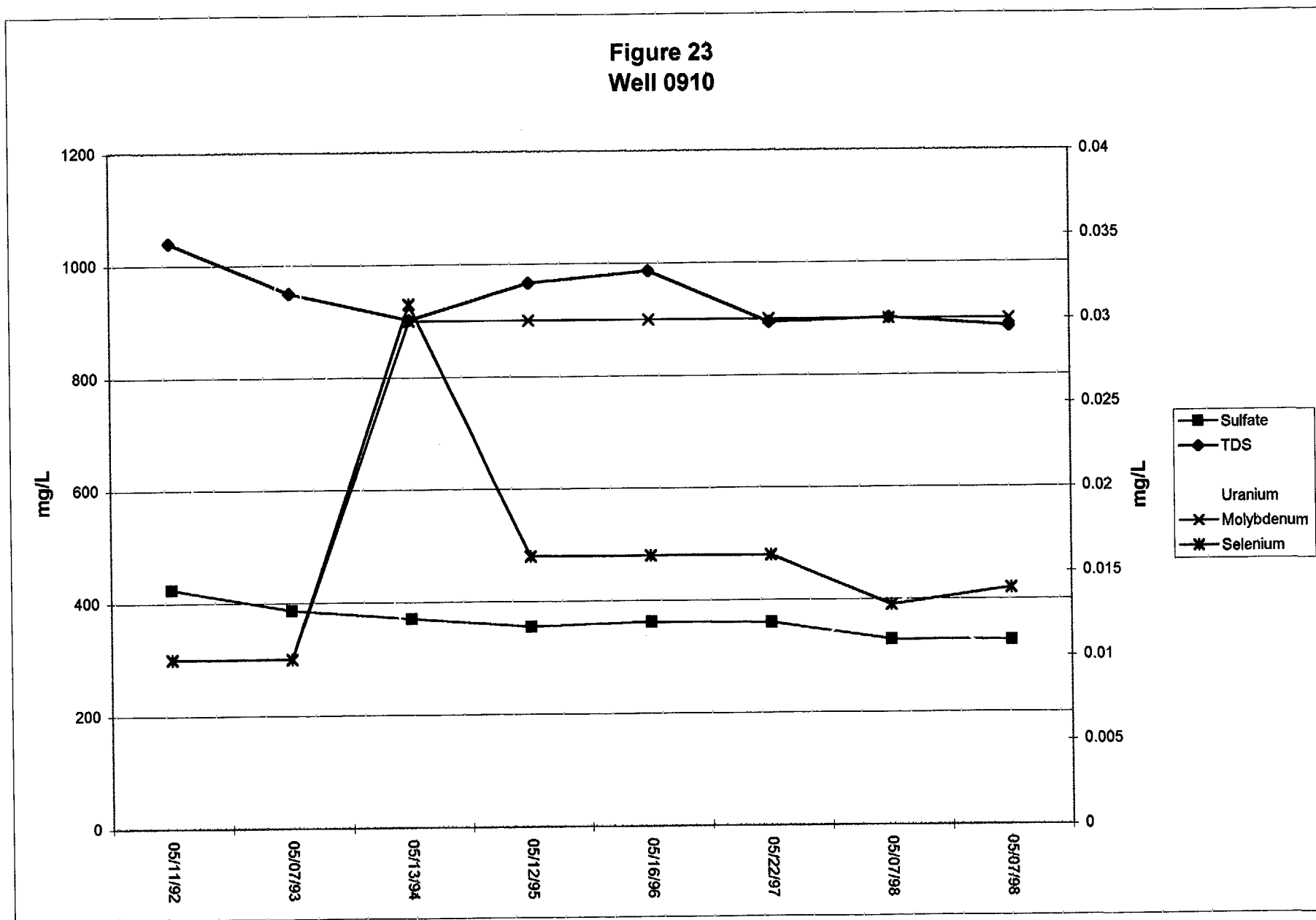
Figure 22
Well 0905



NRC Site Standards: Se: 0.10, U: 0.04, Mo: 0.03
 NM Standards: Se: 0.12, U: 5.0, SO₄: 976, TDS: 1770, Mo: 1.0

SO₄ TDS - left axis
 U, Mo, Se - right axis

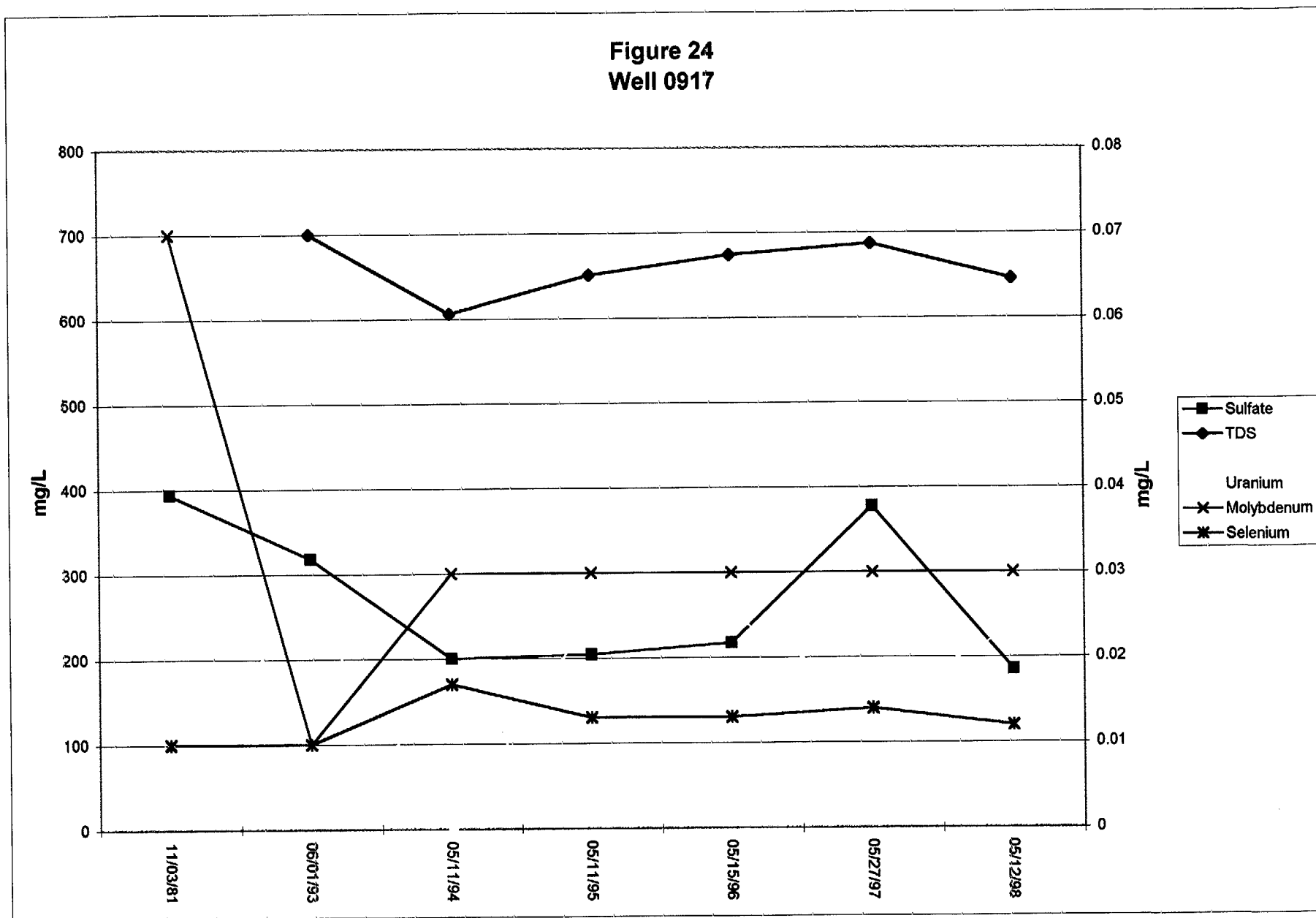
Figure 23
Well 0910



NRC Site Standards: Se: 0.10, U: 0.04, Mo: 0.03
 NM Standards: Se: 0.12, U: 5.0, SO₄: 976, TDS: 1770, Mo: 1.0

SO₄ TDS - left axis
 U, Mo, Se - right axis

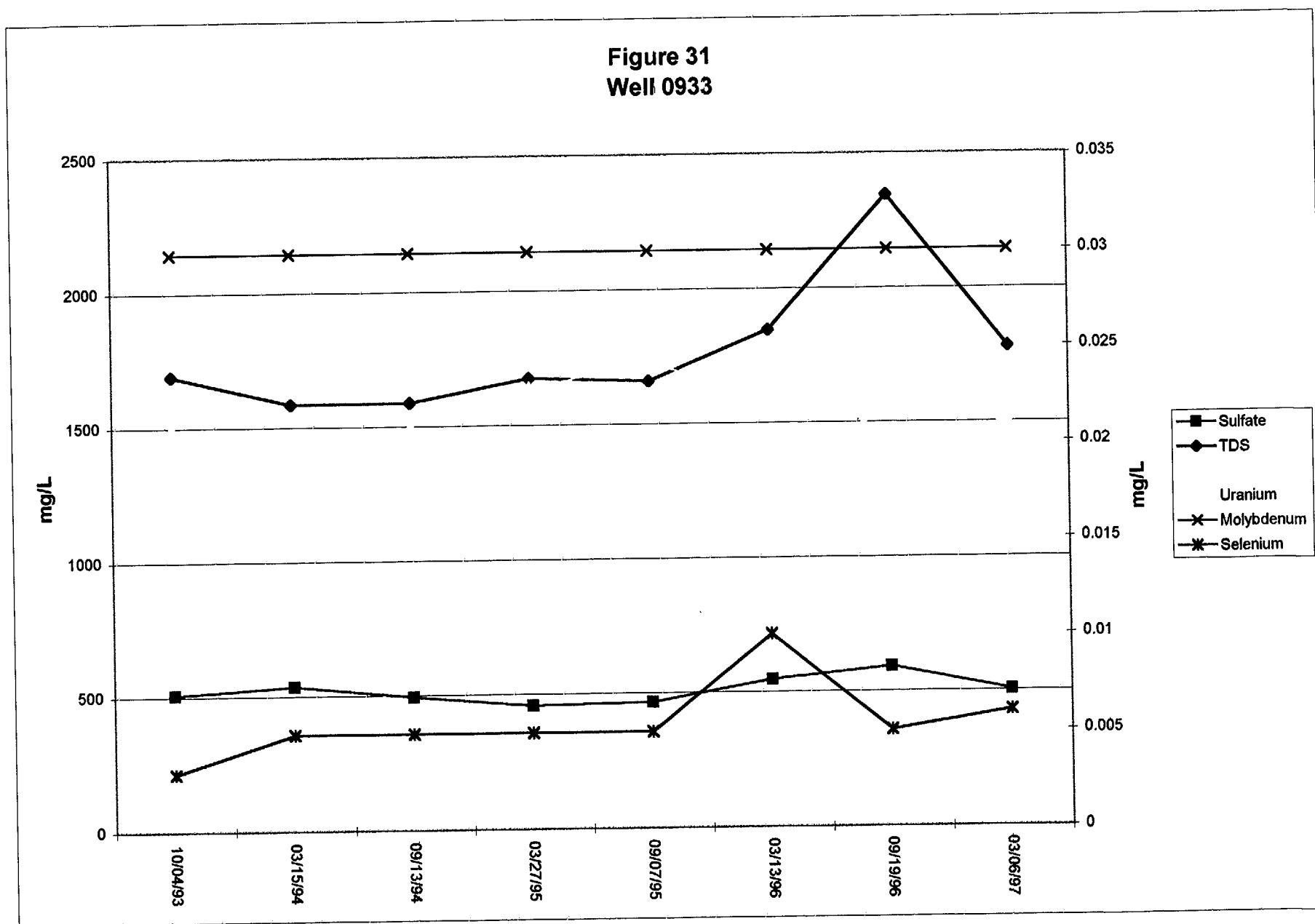
Figure 24
Well 0917



NRC Site Standards: Se: 0.10, U: 0.04, Mo: 0.03
 NM Standards: Se: 0.12, U: 5.0, SO₄: 976, TDS: 1770, Mo: 1.0

SO₄ TDS - left axis
 U, Mo, Se - right axis

Figure 31
Well 0933



NRC Site Standards: Se: 0.10, U: 0.04, Mo: 0.03
 NM Standards: Se: 0.12, U: 5.0, SO₄: 976, TDS: 1770, Mo: 1.0

SO₄ TDS - left axis
 U, Mo, Se - right axis